

# Do it yourself: Installing and Troubleshooting Your Own SAS® 9.2 System

---

Heidi Johnson – SAS Technical Support Analyst



THE  
POWER  
TO KNOW.

# Topics for Discussion

- **What's New in SAS<sup>®</sup> 9.2**
- Some basics about installation
- Keys to a successful installation
- Troubleshooting my installation
- Introduction to SAS<sup>®</sup> Enterprise Miner<sup>™</sup>
- Introduction to SAS<sup>®</sup> Management Console
- Working with SAS<sup>®</sup> Technical Support

# What's New in SAS 9.2?

- SAS<sup>®</sup> Home Directory 9.1.3:
  - » C:\Program Files\SAS\SAS 9.1
- SAS<sup>®</sup> Home Directory 9.2:
  - » C:\Program Files\SAS\SASFoundation\9.2
- SAS<sup>®</sup> Deployment Wizard combines SAS<sup>®</sup> Software Navigator and SAS<sup>®</sup> Configuration Wizard
- SAS<sup>®</sup> Deployment Manager gives you the ability to manage your configuration

# Topics for Discussion

- What's New in SAS<sup>®</sup> 9.2
- **Some basics about installation**
- Keys to a successful installation
- Troubleshooting my installation
- Introduction to SAS<sup>®</sup> Enterprise Miner<sup>™</sup>
- Introduction to SAS<sup>®</sup> Management Console
- Working with SAS<sup>®</sup> Technical Support

# Software Delivery Methods

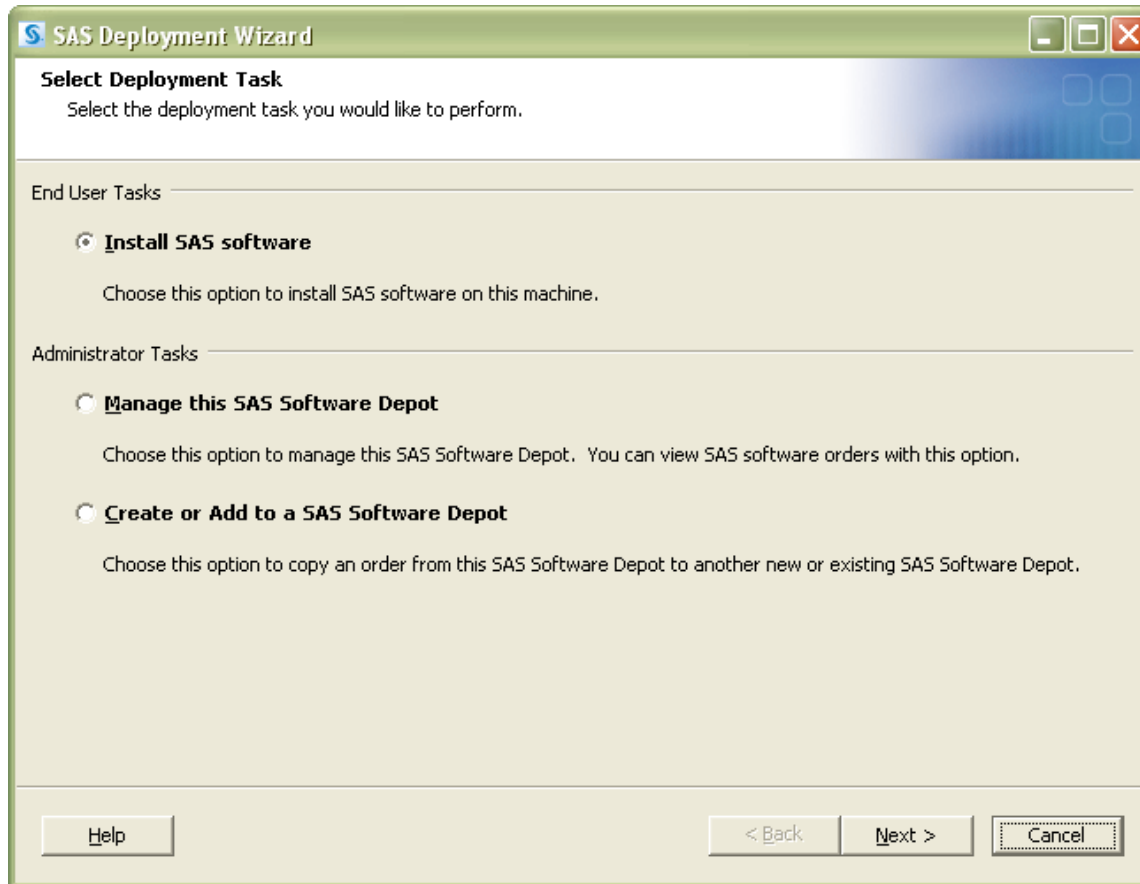
- DVD
- Electronic Software Download (ESD)

# “These DVD’s showed up—now what?”

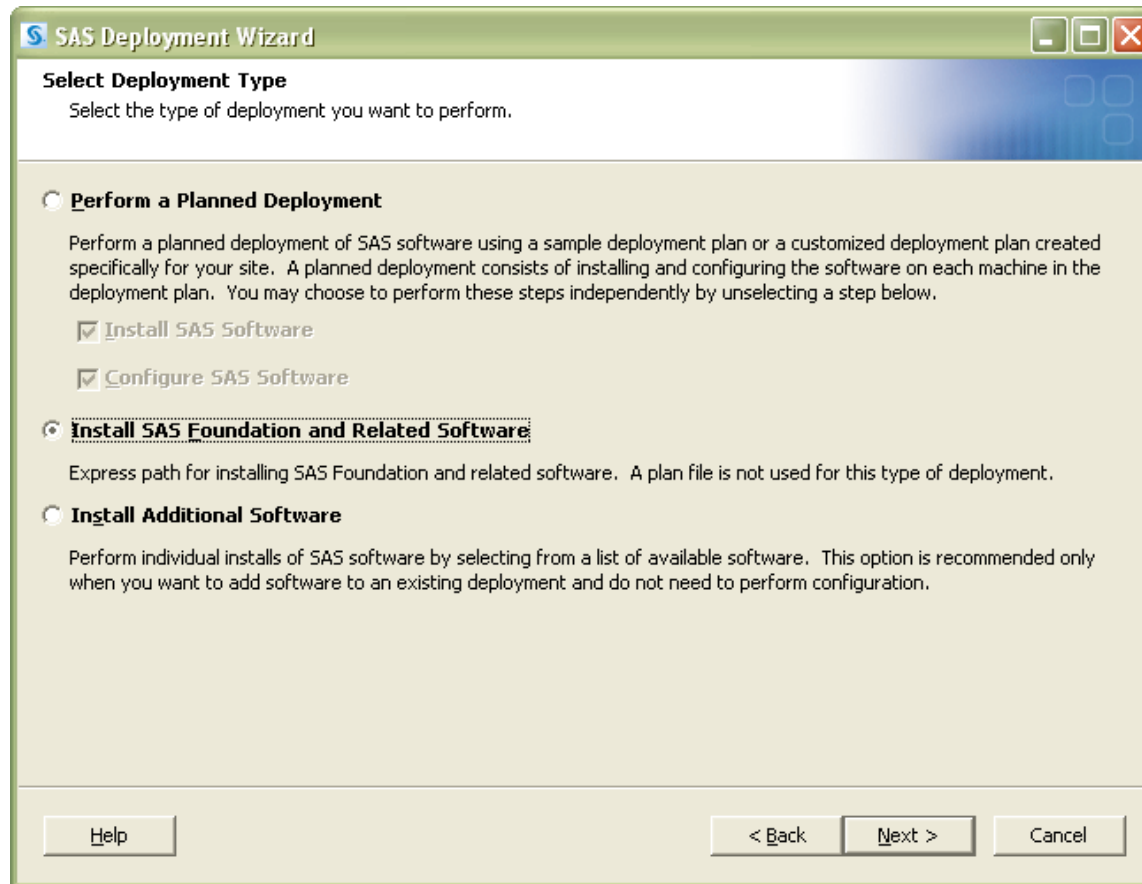
- Can I install using the DVD’s?
  - Yes:
    - » If I am just installing Base SAS®
  - No:
    - » If I am installing a SAS® Solution

# I just want to install SAS<sup>®</sup> Foundation (Base SAS<sup>®</sup>)

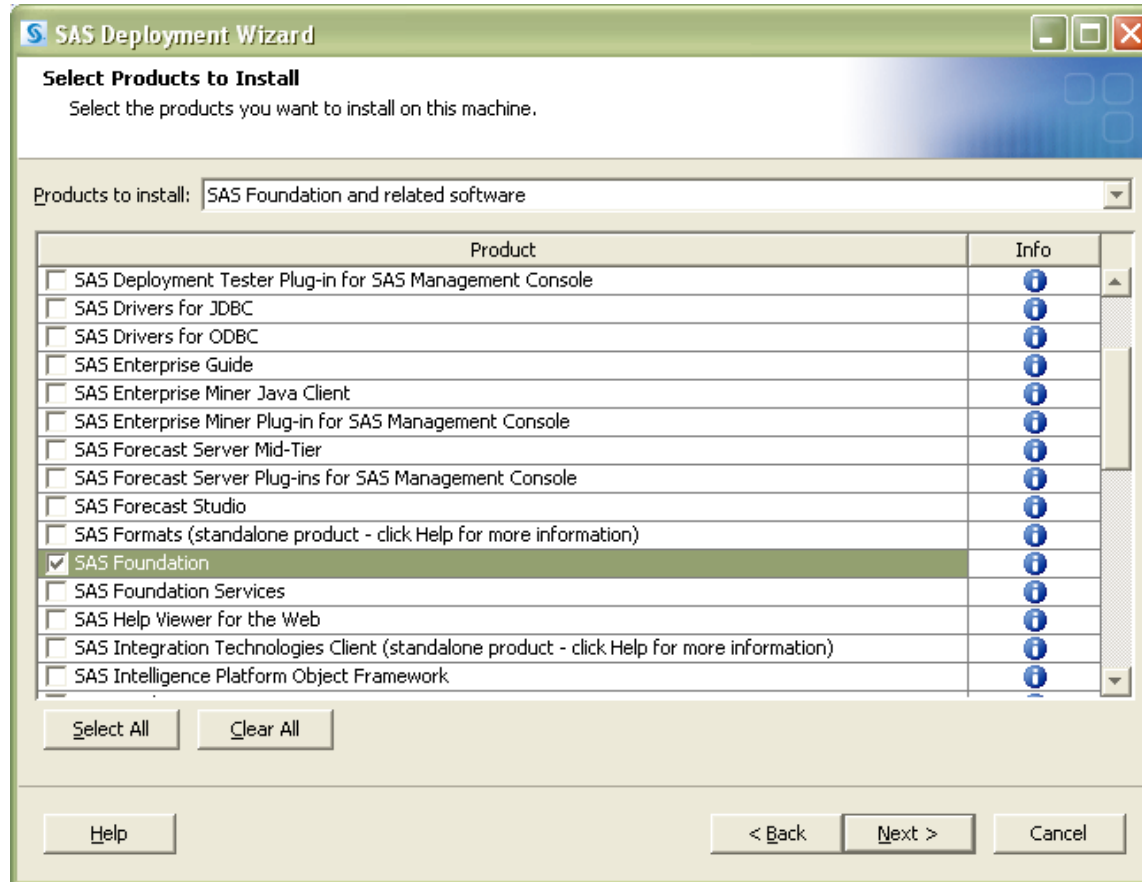
Choose Install SAS Software and click Next



# SAS® Foundation Installation Basics



# SAS® Foundation Installation Basics

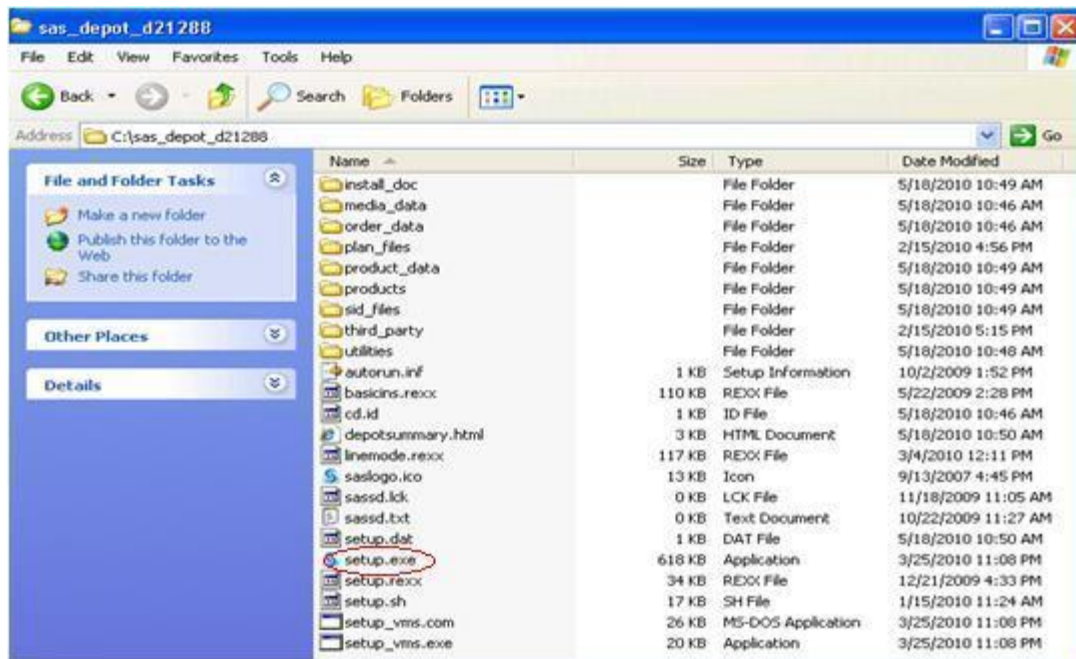


# I want to install a SAS® Solution

- What is a Depot?
- Why do I have to create a Depot?
- What is a SID file?
- What is a planned deployment?

# SAS® Software Depot

A SAS® Software Depot “... is an organized library of SAS® software orders. It can be created electronically or from media, and it is required to deploy most SAS® software.”



# SID File

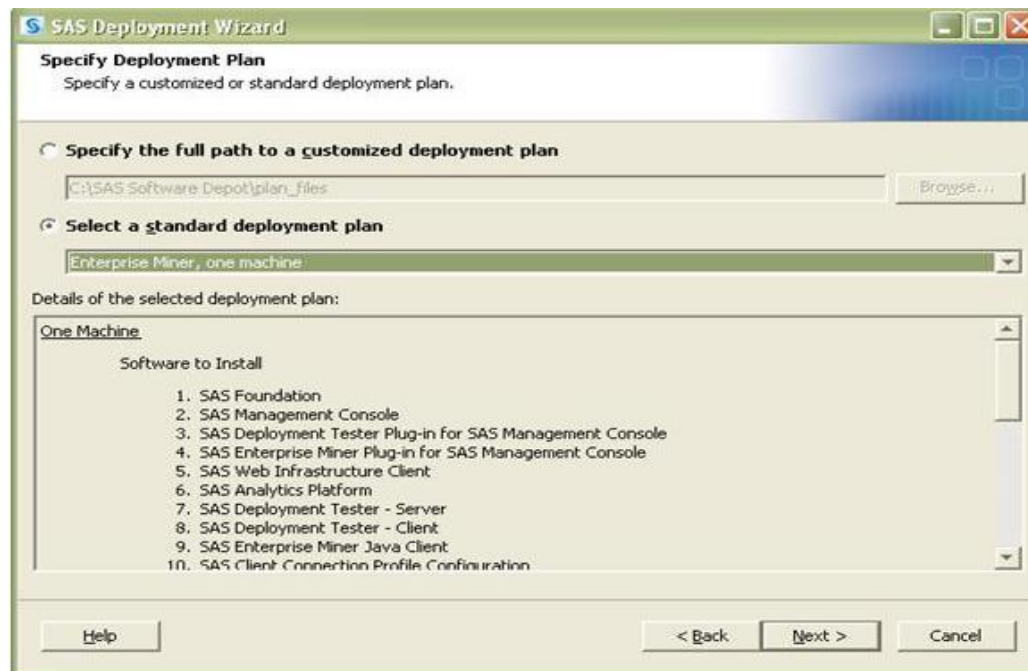
- Contains products licensed
- Included with order
- Required for installation

# SID File

```
sid.txt - Notepad
File Edit Format View Help
$_Stream=----- BEGIN -----
Microsoft windows workstation & server 32-bit
Base SAS 30DEC2010
SAS Enterprise Guide 30DEC2010
SAS/ACCESS Interface to PC Files 30DEC2010
SAS/GRAPH 30DEC2010
SAS/OR 30DEC2010
SAS/STAT 30DEC2010
```

# What is a Planned Deployment?

- A collection of required products
- Not required for SAS<sup>®</sup> Foundation installation
- SAS<sup>®</sup> provides standard deployment plans



# Topics for Discussion

- What's New in SAS<sup>®</sup> 9.2
- Some basics about installation
- **Keys to a successful installation**
- Troubleshooting my installation
- Introduction to SAS<sup>®</sup> Enterprise Miner<sup>™</sup>
- Introduction to SAS<sup>®</sup> Management Console
- Working with SAS<sup>®</sup> Technical Support

# Keys to Success

- Be an administrator
- Install from a SAS<sup>®</sup> Software Depot
- Know what I have licensed
  - » Choose the correct plan file

# Keys to Success

- Verify space on hard drive
- Verify RAM
- Don't use "Home" Operating System
- System Requirements >> <http://support.sas.com>



# Installing SAS® Enterprise Miner™ — Choosing the Correct Plan

- Look at the bottom of the SID file for clues

----- BEGIN -----

- Microsoft Windows Workstation & Server 32-bit
- Base SAS 15JUN2010
- Credit Scoring for SAS Enterprise Miner 15JUN2010
- SAS Enterprise Guide 15JUN2010
- SAS Enterprise Miner Personal Client 15JUN2010

# Installing SAS® Enterprise Miner™ — Choosing the Correct Plan

- Enterprise Miner, one machine
- Enterprise Miner and Text Miner, one machine
- Enterprise Miner **for Desktop**, one machine
- Enterprise Miner **for Desktop** and Text Miner, one machine
- Data Mining for the Classroom, one machine

# Which plan do I use? (Software Licensed = Plan Name)

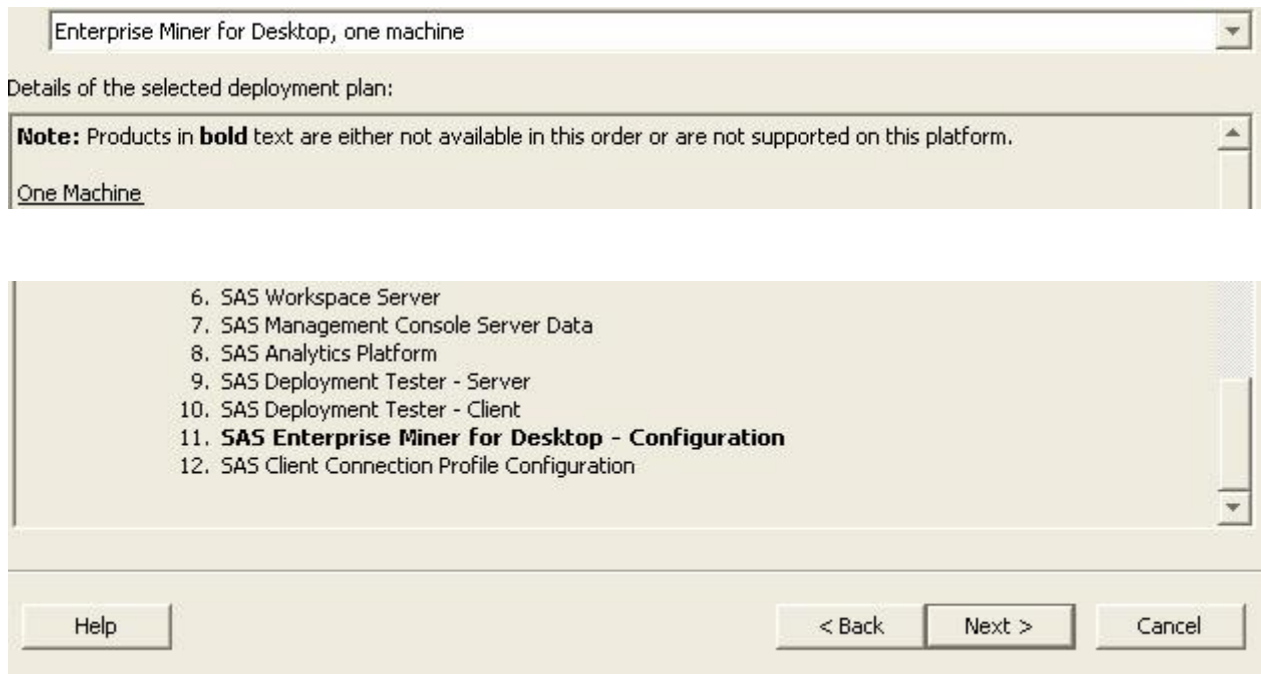
- SAS Enterprise Miner Personal Client = Enterprise Miner, one machine
- SAS Enterprise Miner Personal Client and SAS Text Miner = Enterprise Miner and Text Miner, one machine
- SAS Enterprise Miner for **Desktop** = Enterprise Miner for **Desktop**, one machine

# Which plan do I use? (Software Licensed = Plan Name)

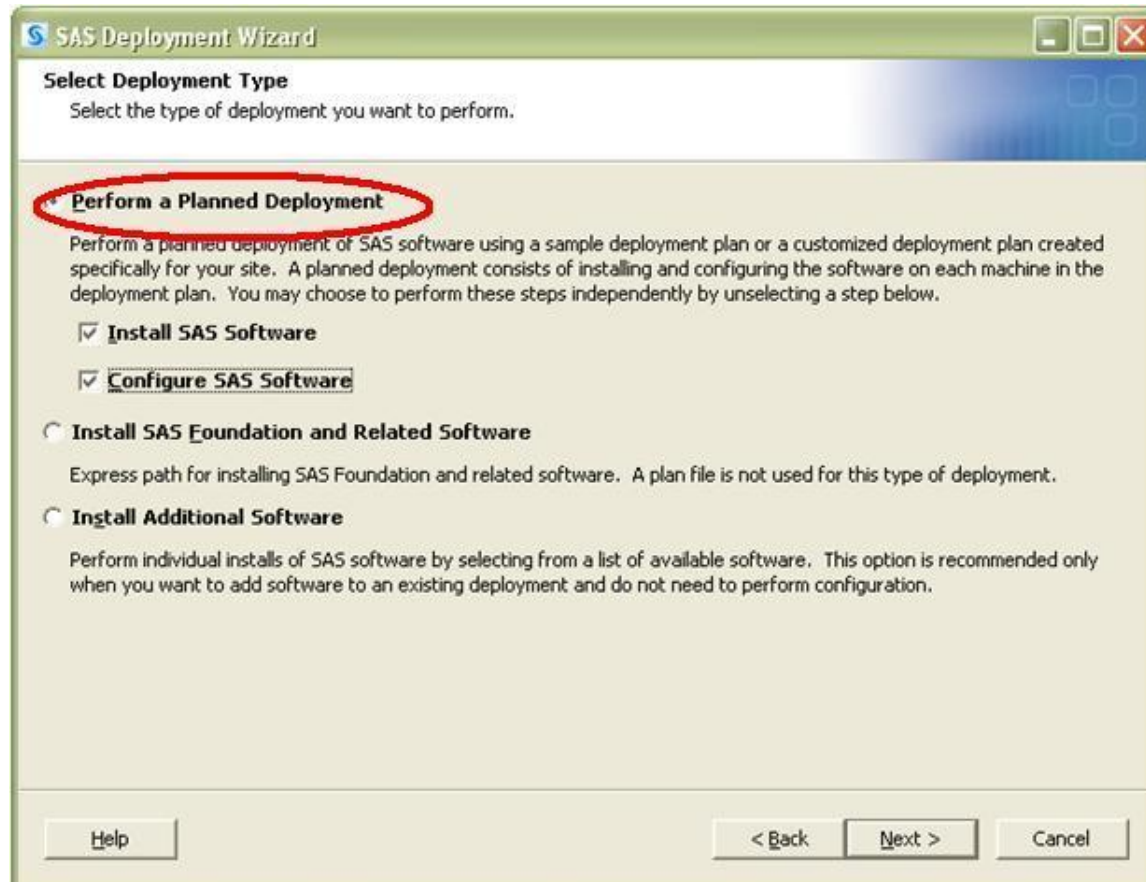
- SAS Enterprise Miner **for Desktop** and SAS Text Miner = Enterprise Miner **for Desktop** and Text Miner, one machine
- Data Mining for the Classroom = Data Mining for the Classroom, one machine

# How can I verify I chose the correct plan?

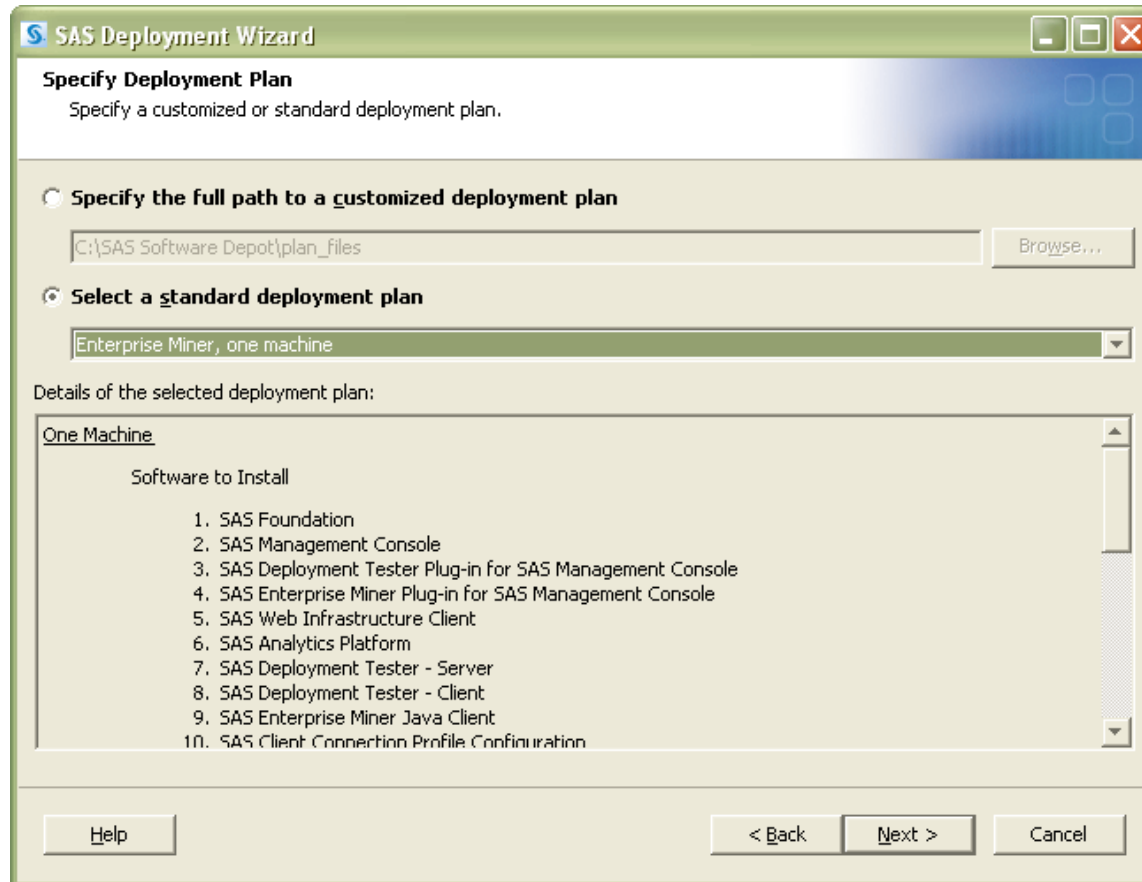
- If the wrong deployment plan is selected I should see:
  - Note: Products in **Bold** text are either not available in this order or are not supported on the platform



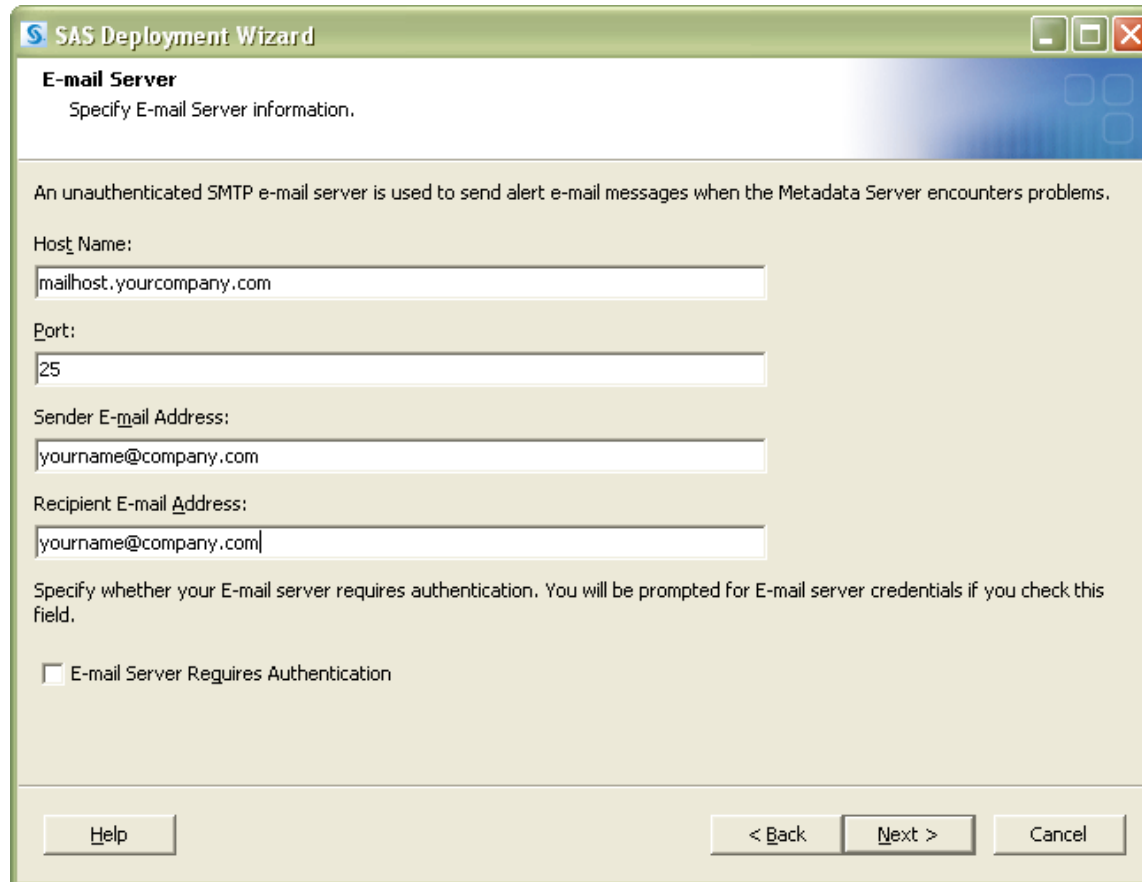
# Navigating the SAS® Deployment Wizard



# Navigating the SAS® Deployment Wizard



# Navigating the SAS® Deployment Wizard



**SAS Deployment Wizard**

**E-mail Server**  
Specify E-mail Server information.

An unauthenticated SMTP e-mail server is used to send alert e-mail messages when the Metadata Server encounters problems.

Host Name:

Port:

Sender E-mail Address:

Recipient E-mail Address:

Specify whether your E-mail server requires authentication. You will be prompted for E-mail server credentials if you check this field.

E-mail Server Requires Authentication

# Topics for Discussion

- What's Different in SAS<sup>®</sup> 9.2
- Some basics about installation
- Keys to a successful installation
- **Troubleshooting my installation**
- Introduction to SAS<sup>®</sup> Enterprise Miner<sup>™</sup>
- Introduction to SAS<sup>®</sup> Management Console
- Working with SAS<sup>®</sup> Technical Support

# Installation Troubleshooting Tips



- If I receive an error
- SDW.log and Bootstrap.log log locations
  - » Windows XP **%USERPROFILE%\Local Settings\Application Data\SAS\SASDeploymentWizard\9.2**
  - » Windows Vista/Windows 7/Windows 2008 Server **%USERPROFILE%\AppData\Local\SAS\SASDeploymentWizard\9.2**

# Installation Troubleshooting Tips—SDW.log

## INFO: Deployment Summary

Image Directory: C:\SAS Software Depot  
Order Number: 123456  
Plan File: C:\...\sampleplans\EMinerTMiner1\en\plan.xml  
Machine Name: One Machine  
Configuration Directory: C:\SAS\Config\Lev1

# Installation Troubleshooting Tips— Bootstrap.log

- Contains errors and installation information

SEVERE: Unable to read session events.

java.rmi.ConnectIOException: Exception creating connection to: 11.12.13.1415; nested exception is:

java.net.BindException: Address already in use: connect

Caused by: java.net.BindException: **Address already in use**

# My installation fails during configuration

- Space
- Anti-Virus
- Firewall

Name	Type	Total Size	Free Space
<b>Hard Disk Drives</b>			
Local Disk (C:)	Local Disk	232 GB	90.6 GB



# My installation fails during configuration

- Check C:\Program Files\Java for multiple Java versions



» <http://support.sas.com> > Knowledge Base > Third Party Software Reference

# “My password changed and now I can't log on to SAS<sup>®</sup> Enterprise Miner<sup>™</sup>”

- See SN-38182



# Topics for Discussion

- What's New in SAS<sup>®</sup> 9.2
- Some basics about installation
- Keys to a successful installation
- Troubleshooting my installation
- **Introduction to SAS<sup>®</sup> Enterprise Miner<sup>™</sup>**
- Introduction to SAS<sup>®</sup> Management Console
- Working with SAS<sup>®</sup> Technical Support

# What is Enterprise Miner™?

“A collection of sophisticated analysis tools that have a common user-friendly interface that you can use to create and compare multiple data mining models....”

Statistical tools include:

- Clustering
- Kohonen self-organizing maps (SOM)
- Variable selection
- Trees
- Linear and logistic regression
- Neural networking

# What's New in SAS<sup>®</sup> Enterprise Miner<sup>™</sup>?

- SAS<sup>®</sup> Enterprise Miner<sup>™</sup> 6.1
  - » Supported on 64 bit architecture
  - » Support of non-SAS<sup>®</sup> Input Data Sources
- SAS<sup>®</sup> Enterprise Miner<sup>™</sup> 6.2
  - » Releases later this year
  - » Windows<sup>®</sup> 7 support
  - » SAS<sup>®</sup> Rapid Predictive Modeler

# SAS® Enterprise Miner™ 6.1 Client

The screenshot displays the SAS Enterprise Miner 6.1 Client interface. The main workspace shows a workflow diagram titled "Gradient Boosting". The diagram starts with a "Home Equity" data source, which feeds into three parallel models: "Decision Tree", "Gradient Boosting", and "Gradient Boosting (2)". The outputs of these three models are then compared in a "Model Comparison" step. The interface includes a menu bar (File, Edit, View, Actions, Options, Window, Help), a toolbar, and a left-hand navigation pane. Below the navigation pane is a property table for the selected "Gradient Boosting" model.

Property	Value
ID	EMWS1
Name	Gradient Boosting
Status	Open
Notes	
History	

Diagram Gradient Boosting opened

# Topics for Discussion

- What's Different in SAS<sup>®</sup> 9.2
- Some basics about installation
- Keys to a successful installation
- Troubleshooting my installation
- Introduction to SAS<sup>®</sup> Enterprise Miner<sup>™</sup>
- **Introduction to SAS<sup>®</sup> Management Console**
- Working with SAS<sup>®</sup> Technical Support

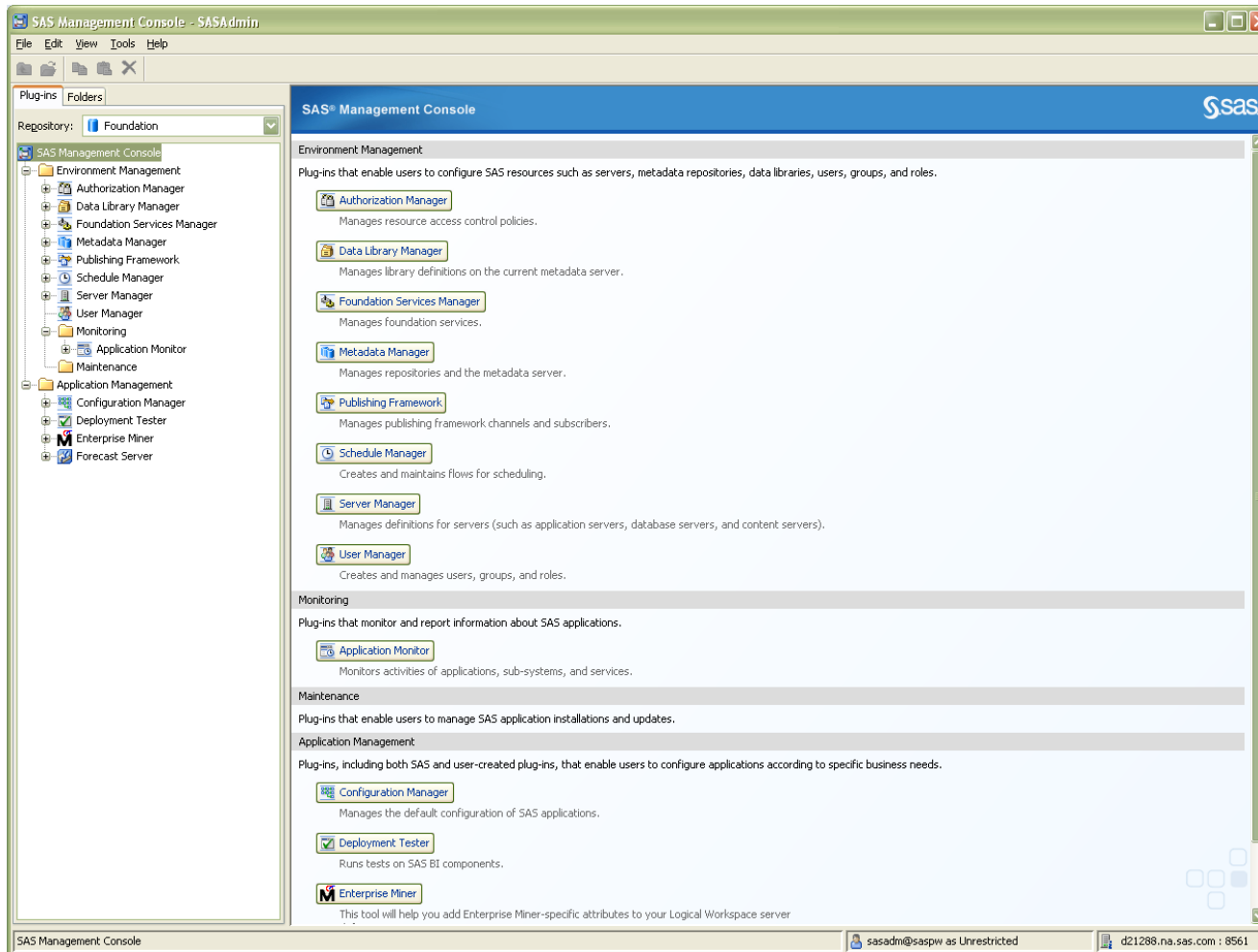
# SAS® Management Console 9.2

- Stores metadata objects
- Standardized management tool
  - » libraries, permissions, projects
  - » Stores objects not physical files
- Uses an *internal* administrator account
  - » sasadm@saspw Stores metadata objects

# SAS® Management Console 9.2

- sasadm@saspw password never expires
  - » Uses domain userid and password
- SN-36100
  - » instructions for resetting sasadm@saspw password

# SAS® Management Console 9.2



# Topics for Discussion

- What's New in SAS<sup>®</sup> 9.2
- Some basics about installation
- Keys to a successful installation
- Troubleshooting my installation
- Installation Guidelines for Enterprise Miner<sup>™</sup>
- Introduction to SAS<sup>®</sup> Enterprise Miner<sup>™</sup>
- Introduction to SAS<sup>®</sup> Management Console
- **Working with SAS<sup>®</sup> Technical Support**

# Working with SAS® Technical Support

- Email: [support@sas.com](mailto:support@sas.com)
- Phone: 919-677-8008
- Web: <http://support.sas.com/ctx/supportform/createForm>
- Include your site number – found in SAS log  
“Licensed to [your organization], Site 123456789.”
- Include logs, screen shots and details if opening via email or web

# Documentation & References

## SAS Software Depot

- » SAS® Software Depot FAQ -  
<http://support.sas.com/kb/39/379.html>
- » Creating a depot -  
<http://support.sas.com/documentation/cdl/en/biig/60946/HTML/default/viewer.htm#/documentation/cdl/en/biig/60946/HTML/default/a003070262.htm>
- » Turning on planned deployment in depot -  
<http://support.sas.com/kb/37/211.html>
- » The Lowdown on the Download: What's Really in My SAS® Software Depot and How Did It Get There?  
<http://support.sas.com/resources/papers/proceedings10/318-2010.pdf>

# Documentation & References

## Installation

- » Validating Installation - <http://support.sas.com/kb/35/787.html>
- » Verifying password validity – <http://support.sas.com/kb/39/977.html>
- » SAS® Enterprise Miner™ 6.1 Single-User Installation Guide - <http://support.sas.com/documentation/cdl/en/bisuug/61234/PDF/default/bisuug.pdf>

# Documentation & References

## Troubleshooting

- » Logs - <http://support.sas.com/kb/35/426.html>
- » Local Administrative Rights -  
<http://support.sas.com/kb/31/281.html> &  
<http://support.sas.com/kb/5/055.html>
- » Object Spawner doesn't start -  
<http://support.sas.com/kb/37/013.html>
- » My password changed and can't log on to Enterprise Miner <sup>TM</sup>  
- <http://support.sas.com/kb/38/182.html>
- » I have IPV6 - <http://support.sas.com/kb/37/509.html>
- » Forgot sasadm password -  
<http://support.sas.com/kb/36/100.html>

# Documentation & References

Support Site – <http://support.sas.com>

- » Knowledge Base -  
<http://support.sas.com/resources/index.html>
- » System Requirements -  
<http://support.sas.com/resources/sysreq/>
- » Recommended Java Versions -  
<http://support.sas.com/resources/thirdpartysupport/v92m3/jres.html>

# Documentation & References

## What's New

- » What's New in Enterprise Miner 6.1 – <http://support.sas.com/documentation/onlinedoc/miner/index.html>
- » What's New in SAS® Add-In 4.2 for Microsoft Office - <http://support.sas.com/resources/papers/proceedings09/051-2009.pdf>

