

SAS® ODS Destination for Microsoft Excel: Use the STYLE Option to Spruce Up an Excel Output Workbook

William E Benjamin Jr, Owl Computer Consultancy LLC, Phoenix Arizona

ABSTRACT

The SAS® environment maintains many different output styles to use to enhance the visual display of your output data. The ODS destination for Excel can take advantage of these styles maintained by SAS to apply formatting and color schemes to your Excel output workbooks. I show you how to use the STYLE option in the ODS destination for Excel to enhance your output workbooks.

INTRODUCTION

This paper is one of a series of short papers each describing one suboption element of the ODS Excel Destination. Here I will list the available "Actions", "Options", and "Suboptions" and describe one feature of the ODS Excel Destination. Unlike the ODS tagset called EXCELXP, the ODS Excel Destination cannot be modified by you the SAS user. This paper is being presented as a 10 minute paper and therefore can only cover a small focused topic. The ODS Excel Destination has over 65 "Actions", "Options", and "Suboptions" available.

PROBLEM

The ability to output SAS data and graphs to Microsoft Excel workbooks has long been something that both SAS and Excel users have wanted. SAS users want better ways to output more detailed and complex data because their boss wants the data in an Excel workbook. Excel users want the data in Excel because they can easily process "What - If ..." questions. Therefore, both SAS and Excel users really want better ways to produce Excel workbooks.

ODS EXCEL DESTINATION FEATURE DESCRIPTION

ODS Excel Destination "Actions", "Options", and "Suboptions" work with different parts of the Excel Workbook. This paper will describe one "Action" associated with the ODS Excel Destination software called the Style option. The length of this paper only allows a short introduction to using the style features of the ODS Excel Destination, but if you do not know where to start nothing else can be accomplished.

ODS EXCEL DESTINATION "ACTIONS", "OPTIONS", AND "SUBOPTIONS"

The following tables list the full list of "Actions", "Options", and "Suboption" available for the ODS Excel Destination as presented in SAS V9.4 (TS1M3).

List of ODS Excel Actions

Actions Include	
NONE	Sends Excel output to the SAS Default output directory. Depending on your version of SAS, the default directory is shown in the bottom left or right side of the display manager window.
CLOSE	Closes an ODS EXCEL statement with or without an ID= option.

EXCLUDE	An ODS EXCLUDE statement prevents an ODS object from being output.
SELECT	An ODS SELECT statement includes an ODS object in the output.
SHOW	An ODS SHOW statement writes the current selection or exclusion list to the log

List of ODS Excel Options

Optional Arguments		
ANCHOR=	AUTHOR=	BOX_SIZING=
CATEGORY=	COMMENTS=	CSSSTYLE=
DOM=	DPI=	FILE=
GFOOTNOTE	NOGFOOTNOTE	GTITLE
NOGTITLE	IMAGE_DPI=	KEYWORDS=
ID=	OPTIONS	SASDATE
STATUS=	STYLE=	TEXT=
TITLE=	WORK=	

Suboptions of the OPTIONS option of the ODS EXCEL statement

Suboptions of the OPTIONS Argument	
ABSOLUTE_COLUMN_WIDTH=	ABSOLUTE_ROW_HEIGHT=
AUTOFILTER=	BLACKANDWHITE=
BLANK_SHEET=	CENTER_HORIZONTAL=
CENTER_VERTICAL=	COLUMN_REPEAT=
CONTENTS=	DPI=
DRAFTQUALITY=	EMBEDDED_FOONOTES=
ENBED_FOOTNOTES_ONCE=	EMBEDDED_TITLES=
EMBED_TITLES_ONCE=	FITTOPAGE=
FORMULAS=	FROZEN_HEADERS=
FROZEN_ROWHEADERS=	GRIDLINES=
HIDDEN_COLUMNS=	HIDDEN_ROWS=
INDEX=	MSG_LEVEL=
ORIENTATION=	PAGE_ORDER_ACROSS=
PAGES_FITHEIGHT=	PAGES_FITWIDTH=
PRINT_AREA=	PRINT_FOOTER=
PRINT_FOOTER_MARGIN=	PRINT_HEADER=

PRINT_HEADER_MARGIN=	ROWBREAKS_COUNT=
ROWBREAKS_INTERVAL=	ROWCOLHEADINGS=
ROW_HEIGHTS=	ROW_REPEAT=
SCALE=	SHEET_INTERVAL=
SHEET_LABEL=	SHEET_NAME=
START_AT=	SUPPRESS_BYLINES=
TAB_COLOR=	TITLE_FOOTNOTE_NOBREAK=
TITLE_FOOTNOTE_WIDTH=	ZOOM=

THE ODS EXCEL DESTINATION SYNTAX

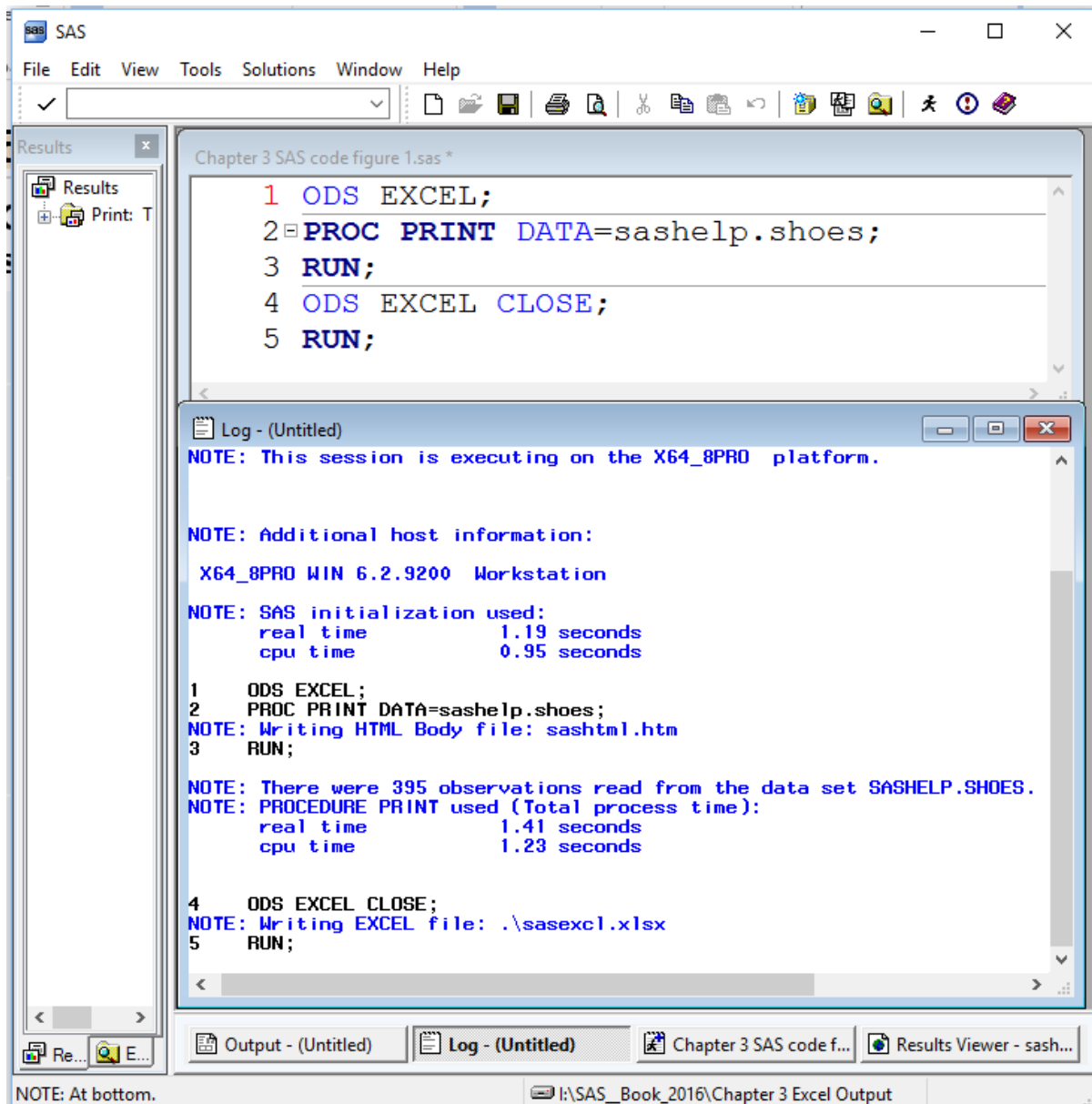
Simple ODS Syntax for the ODS EXCEL destination.

```
ODS EXCEL <(<ID=> identifier)> <action> ;
ODS EXCEL <(<ID=> identifier)> <option(s)> ;
```

The SAS ODS Excel destination syntax shown above is just the tip of the iceberg. As shown, everything except "ODS EXCEL;" is optional. One thing to point out is that there is an "Argument" called "OPTIONS" that has many "SUB-OPTIONS", they are described in the SAS HELP under the Base SAS 9.4 (TS1M3) topic "ODS EXCEL Statement. In its simplest form the following SAS code will produce an Excel workbook. As shown here.

```
ODS EXCEL;
PROC PRINT DATA=sashelp.shoes;
RUN;
ODS EXCEL CLOSE;
```

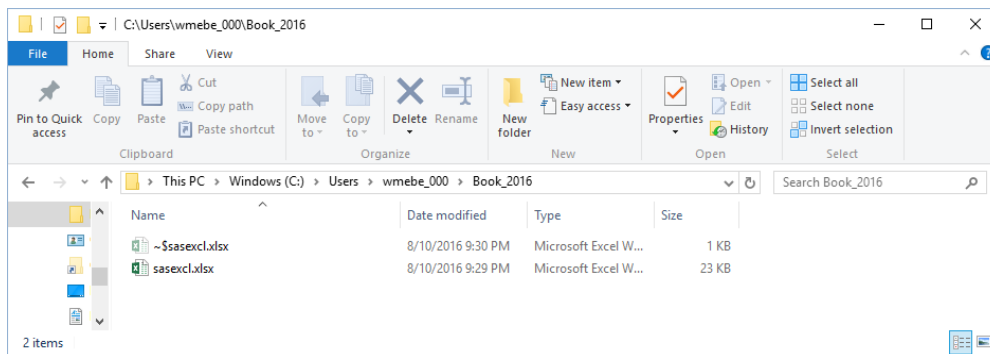
The SAS output looks like this, note that without a FILE= statement the output Excel Workbook goes to the current default directory with the default file name sasexcl.xlsx. The sheet name is also a default name composed of the procedure name and the SAS Dataset name.



The Excel output workbook looks like the following. On the bottom of the PC SAS display manager window the default output directory name is listed. The actual location on the screen varies depending on the version of SAS that you are using. This form of execution selects the filename at execution time, while the FILE= option enables you to select an output filename. In this example, the name defaults to sasexcl.xlsx, but on other operating systems the default name might be different. Depending on the operating system that the SAS code was running on, and the TOOLS> Options> Preferences "Results" tab selections, the output EXCEL workbook can be forced open using EXCEL.

Obs	Region	Product	Subsidiary	Stores	Sales	Inventory	Returns
1	Africa	Boot	Addis Ababa	12	\$29,761	\$191,821	\$769
2	Africa	Men's Casual	Addis Ababa	4	\$67,242	\$118,036	\$2,284
3	Africa	Men's Dress	Addis Ababa	7	\$76,793	\$136,273	\$2,433
4	Africa	Sandal	Addis Ababa	10	\$62,819	\$204,284	\$1,861
5	Africa	Slipper	Addis Ababa	14	\$68,641	\$279,795	\$1,771
6	Africa	Sport Shoe	Addis Ababa	4	\$1,690	\$16,634	\$79
7	Africa	Women's Casual	Addis Ababa	2	\$51,541	\$98,641	\$940
8	Africa	Women's Dress	Addis Ababa	12	\$108,942	\$311,017	\$3,233
9	Africa	Boot	Algiers	21	\$21,297	\$73,737	\$710
10	Africa	Men's Casual	Algiers	4	\$63,206	\$100,982	\$2,221
11	Africa	Men's Dress	Algiers	13	\$123,743	\$428,575	\$3,621
12	Africa	Sandal	Algiers	25	\$29,198	\$84,447	\$1,530
13	Africa	Slipper	Algiers	17	\$64,891	\$248,198	\$1,823
14	Africa	Sport Shoe	Algiers	9	\$2,617	\$9,372	\$168
15	Africa	Women's Dress	Algiers	12	\$90,648	\$266,805	\$2,690
16	Africa	Boot	Cairo	20	\$4,846	\$18,965	\$229
17	Africa	Men's Casual	Cairo	25	\$360,209	\$1,063,251	\$9,424
18	Africa	Men's Dress	Cairo	5	\$4,051	\$45,962	\$97
19	Africa	Sandal	Cairo	9	\$10,532	\$50,430	\$598
20	Africa	Slipper	Cairo	9	\$13,732	\$54,117	\$1,216
21	Africa	Sport Shoe	Cairo	3	\$2,259	\$20,815	\$44
22	Africa	Women's Casual	Cairo	14	\$328,474	\$940,851	\$10,124
23	Africa	Women's Dress	Cairo	3	\$14,095	\$51,145	\$745
24	Africa	Boot	Johannesburg	14	\$8,365	\$33,011	\$483

The windows output directory is shown below; the directory was empty before the SAS code was executed. Afterward, the directory shows the output Excel workbook. Since the workbook was opened the temporary file generated by Excel is also visible.



THE STYLE OPTION

The Style option permits you to change the look of the output sent to Excel. Hidden beneath each ODS output we use is a default style. When the ODS EXCEL statement is used to write an Excel workbook there is always a style used. The default STYLE is EXCEL. The ODS EXCEL STYLE= option enables you to modify that default.

Action Parameter	Options	Description
STYLE	Style-override(s)	Use a predefined style element, a collection of style changes, or a single (or group of) style name-value pair of changes.

SAS SUPPORTED STYLE OPTIONS

There is a way to determine what styles are available in your current version. The SAS Code below generates a list of the available styles. They are displayed by PROC TEMPLATE. They reside in the SASHELP.TMPLMST item store. The Table of Supported SAS Styles below contains the names of the styles supported in SAS version 9.4 1M3. The SAS code prints a list and I copied the list into the table shown here.

Generate a List of SAS Supported Styles

```
ods _all_ close;
ods listing;
proc template;
list styles;
run;
quit;
```

Table of Supported SAS Styles for SAS version 9.4 1M3

List of SAS Styles Supported (SAS 9.4 1M3)			
Analysis	BarrettsBlue	BlockPrint	DTree
Daisy	Default	Dove	EGDefault
Excel	FancyPrinter	Festival	FestivalPrinter
Gantt	GrayscalePrinter	HTMLBlue	Harvest
HighContrast	HighContrastLarge	Journal	Journal1a
Journal2	Journal2a	Journal3	Journal3a
Listing	Meadow	MeadowPrinter	Minimal
MonochromePrinter	Monospace	Moonflower	Netdraw
NoFontDefault	Normal	NormalPrinter	Ocean
Pearl	PearlJ	Plateau	PowerPointDark
PowerPointLight	Printer	Raven	Rtf
Sapphire	SasDocPrinter	SasWeb	Seaside
SeasidePrinter	StatDoc	Statistical	Word
vaDark	vaHighContrast	vaLight	

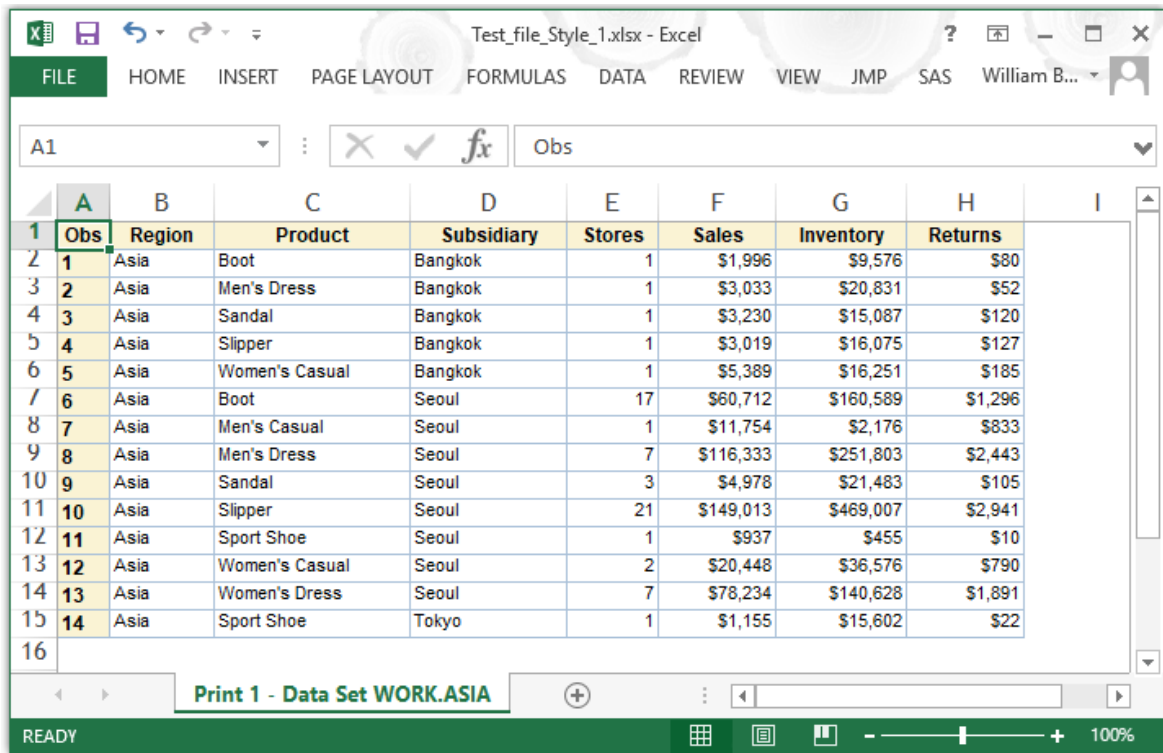
The following code writes an Excel workbook sheet using the SAS supported style called "SEASIDE". I created the sas data set called "ASIA_ONLY" by using the SASHELP.SHOES data set and selecting only the records where REGION="ASIA". This allows my to show the whole worksheet on one small screen shot.

Generate an Excel Workbook with STYLE=SEASIDE

```
ods excel file = "&path.\Test_file_Style_1.xlsx"  
              STYLE=SEASIDE;  
Proc Print data=Asia_Only;  
run;  
ods excel close;
```

The default STYLE is EXCEL which produces light blue Column and Row headers. Each of the styles listed in the Table of Supported SAS Styles produces a different layout in the EXCEL workbook. I have not executed code using all of the styles, but I do know that some of the styles only have minor differences from other styles.

Figure 6-10 Excel Workbook Using the SEASIDE STYLE



Obs	Region	Product	Subsidiary	Stores	Sales	Inventory	Returns
1	Asia	Boot	Bangkok	1	\$1,996	\$9,576	\$80
2	Asia	Men's Dress	Bangkok	1	\$3,033	\$20,831	\$52
3	Asia	Sandal	Bangkok	1	\$3,230	\$15,087	\$120
4	Asia	Slipper	Bangkok	1	\$3,019	\$16,075	\$127
5	Asia	Women's Casual	Bangkok	1	\$5,389	\$16,251	\$185
6	Asia	Boot	Seoul	17	\$60,712	\$160,589	\$1,296
7	Asia	Men's Casual	Seoul	1	\$11,754	\$2,176	\$833
8	Asia	Men's Dress	Seoul	7	\$116,333	\$251,803	\$2,443
9	Asia	Sandal	Seoul	3	\$4,978	\$21,483	\$105
10	Asia	Slipper	Seoul	21	\$149,013	\$469,007	\$2,941
11	Asia	Sport Shoe	Seoul	1	\$937	\$455	\$10
12	Asia	Women's Casual	Seoul	2	\$20,448	\$36,576	\$790
13	Asia	Women's Dress	Seoul	7	\$78,234	\$140,628	\$1,891
14	Asia	Sport Shoe	Tokyo	1	\$1,155	\$15,602	\$22

Notice the yellow Column and Row headers.

THE ODS EXCEL STYLE= OVERRIDES

There are other ways to "Stylize" your output within Excel worksheets, and some of them even have "STYLE=" as part of the name. However, styles are applied within the procedures, not the ODS statement. As a result I will list some of the different types of style overrides, but not show detailed examples. I found these examples on page 311 of SAS Institute Inc. 2016. SAS® 9.4 Output Delivery System: User's Guide, Fifth Edition. Cary, NC: SAS Institute Inc.

There are two methods of providing style overrides. First, as a style element, which is a collection of attributes that affect some output of a SAS program. Second, as a style attribute, which is a name-value pair that describes an output behavior or visual result that you want to apply to output data. A style attribute change is the most specific way to directly change how your data looks.

General Syntax of the Style Overrides

```
/* These code segments are out of context
* The Style-override element name syntax:
style-element-name | [style-attribute-name-1=style-attribute-value-1
<style-attribute-name-2=style-attribute-value-2 ...>]
* The Style-override attribute syntax;

style={tagattr='format:$#,##0_');[Red]\($#,##0\}
formula:RC[-1]-RC[-2]'};
*/
```

These syntax descriptions in SAS Code 6-17 are out of context. These are style overridden but will not execute as coded. In order to get information about the proper way to use these SAS code structures. See SAS Institute Inc. 2016. SAS® 9.4 Output Delivery System: Procedures Guide, Third Edition. Cary, NC: SAS Institute Inc. for these and other attribute name-value pairs.

CONCLUSION

The ODS Excel Destination is very flexible and the STYLE option allows you to spruce up your output to the production level at the time the workbook is created. While it may take a little extra time to produce the first fancy workbook, any others will only require minor adjustments and save manual effort to upgrade the outputs.

REFERENCES

SAS Institute Inc. 2016. SAS® 9.4 Output Delivery System: User's Guide, Fifth Edition. Cary, NC: SAS Institute Inc.

Benjamin, William E., Jr. 2017. *Exchanging Data From SAS to Excel: The ODS Excel Destination*. Cary, NC: SAS Institute Inc.

CONTACT INFORMATION

Your comments and questions are valued and encouraged. Contact the author at:

William E Benjamin Jr

Owl Computer Consultancy, LLC

Phone – 623-337-0269

Email - Wmebenjaminjr3@juno.com

SAS and all other SAS Institute Inc. product or service names are registered trademarks or trademarks of SAS Institute Inc. in the USA and other countries. ® indicates USA registration.

Other brand and product names are trademarks of their respective companies.