

Who Needs To Know Program Syntax When You Have Enterprise Guide?

Prepared by



International SAS® Training and Consulting
A SAS Institute Quality Partner™

100 Great Meadow Rd, Suite 601
Wethersfield, CT 06109-2379
Phone: (860) 721-1684 1-800-7TRAINING
Fax: (860) 721-9784

Web: www.destinycorp.com Email: info@destinycorp.com


Introduction

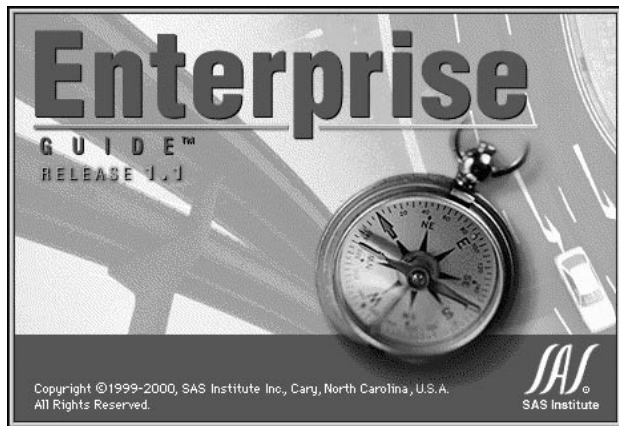
Why use Enterprise Guide?

Programming in SAS has always been the biggest obstacle for Analysts. This course will demonstrate an incredible new tool that will allow you to create reports, statistics, graphs and assemble data in seconds flat. This software will also build the program for you with perfect syntax. You don't have to code anything. This is the best tool SAS Institute has developed for day to day SAS user needs. You're programming and programs will never be the same again. Folks, this is better than sliced bread.

Starting Enterprise Guide



Locate the  icon or selection on your Start Menu. Click it to bring up the splash screen.

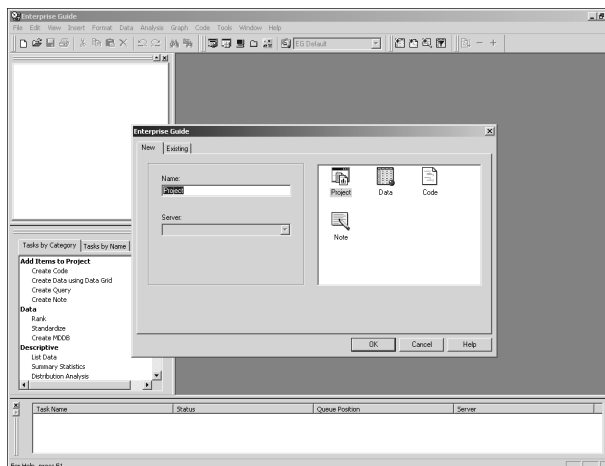


The application will load.

Projects

Everything you do in Enterprise Guide is done in a project. These are similar to folders that can contain many types of analysis. It is possible to have several project folders.

Many people don't just work on one project at a time. This software is designed to allow you to manage multiple analytical projects on your machine. You can switch between projects as required.

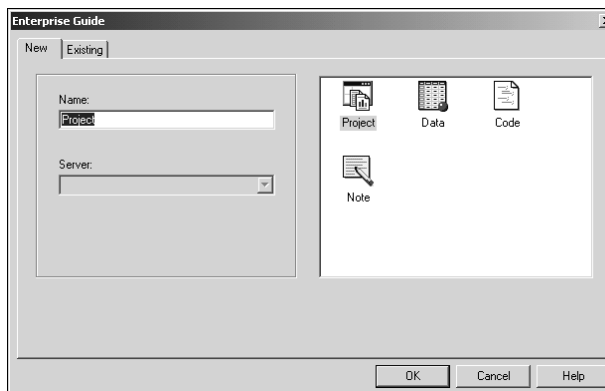


Notice Merlin. He is your personal assistant who can guide you through your use of Enterprise Guide.

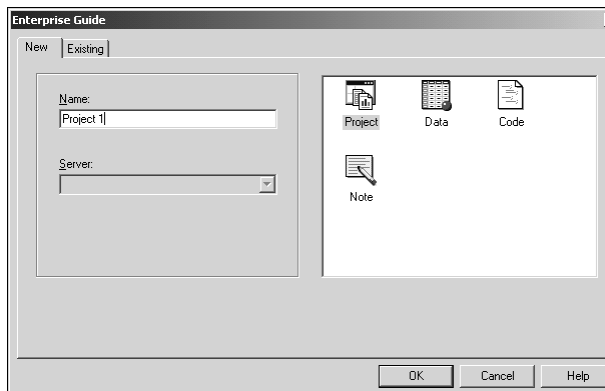
Note: It is best to have the appropriate multimedia computer system to make use of this feature.



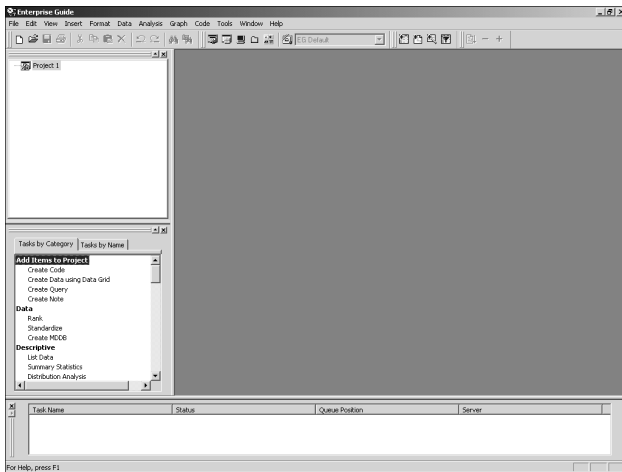
You will be prompted to enter a name for your Project.



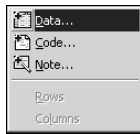
We will use Project 1 for this demonstration.



Click  to enter the Enterprise Guide Desktop.

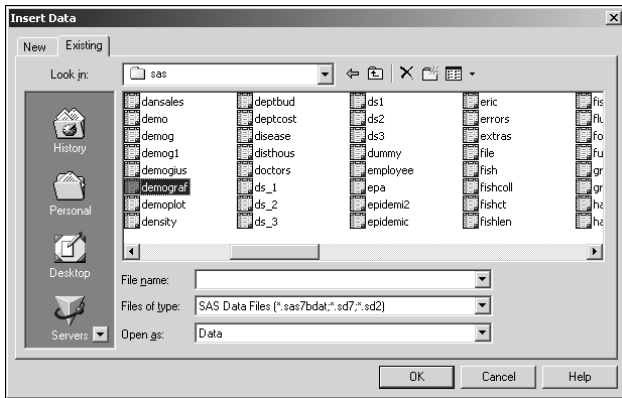


Now that we have a project, we must insert some data into the project so we can analyze it.



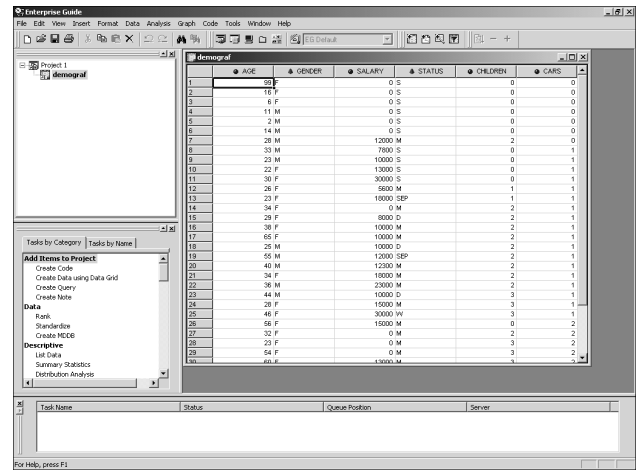
Select the Insert pull down menu and

The following prompt window will appear, asking you to select data. Data can come from almost anywhere, including tables from relational databases stored on other operating systems.



Select the DEMOGRAF data set from the course library (see your instructor for specific locations) and click **OK**.

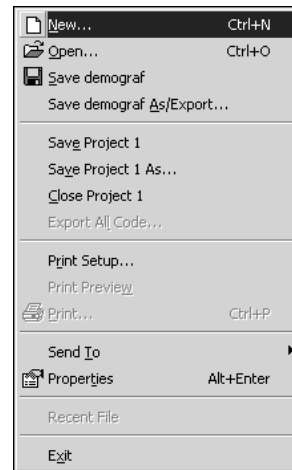
Enterprise Guide will now analyze the data, determining variables available and their types. When finished, the data will be loaded onto the desktop.



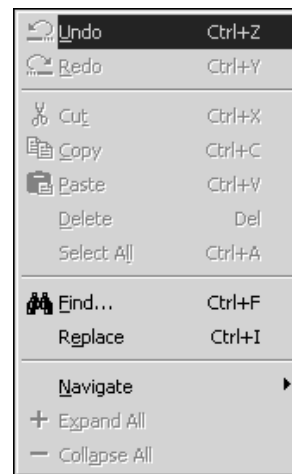
Notice the data set 'demograf' listed in the upper left corner of the desktop as part of Project 1.

There are many pull down menus available to do all of your work in Enterprise Guide. No coding is necessary. An overview of all of the items will give you a better feel as to what the software will be able to do.

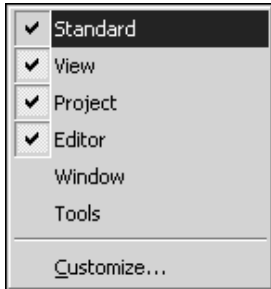
File Menu



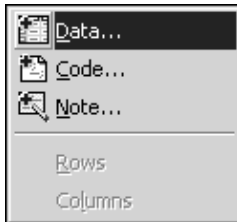
Edit Menu



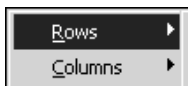
View Menu



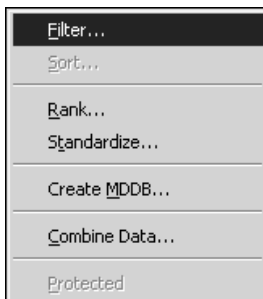
Insert Menu



Format Menu



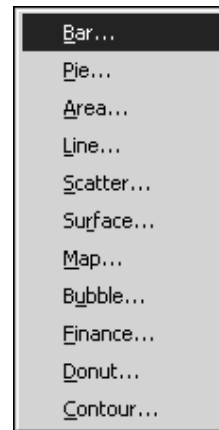
Data Menu



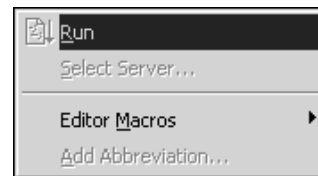
Analysis Menu



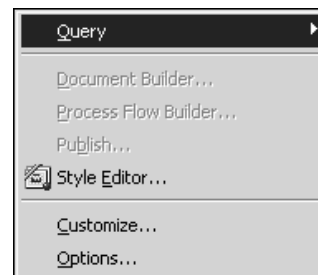
Graph Menu



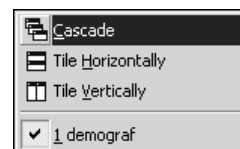
Code Menu



Tools Menu



Window Menu



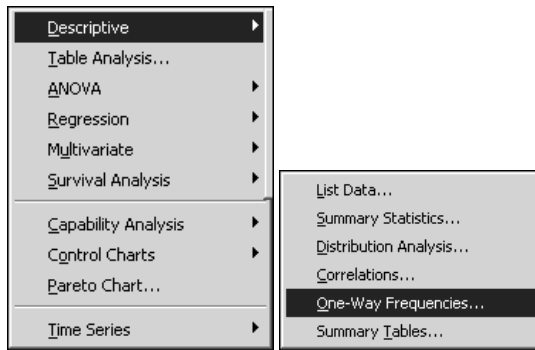
Help Menu

**Basic Analysis On Your Data**

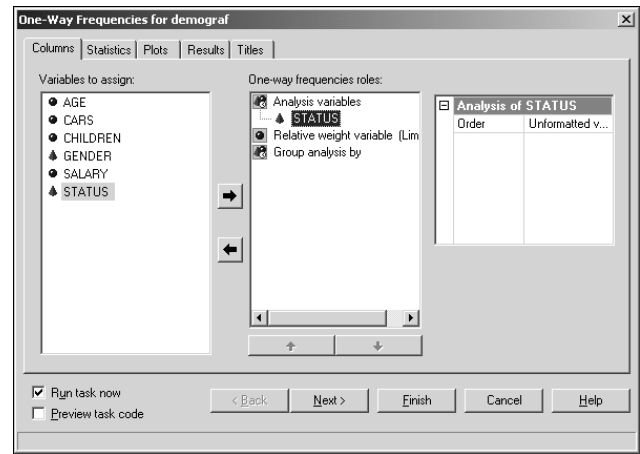
Let's perform a simple analysis on the data to demonstrate the power of this software.

Given the data we have loaded, we will create a simple Frequency Analysis on the variable Status.

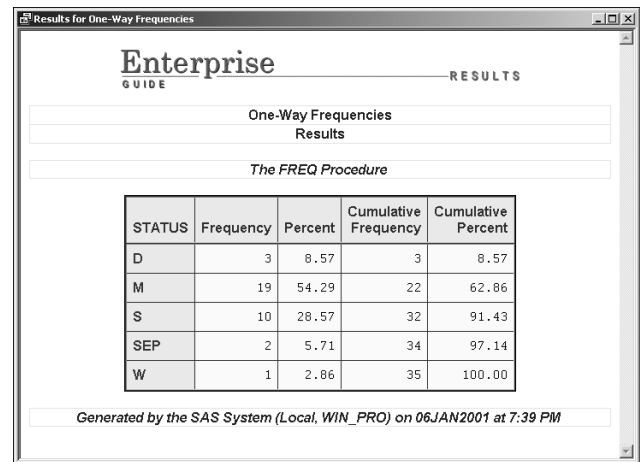
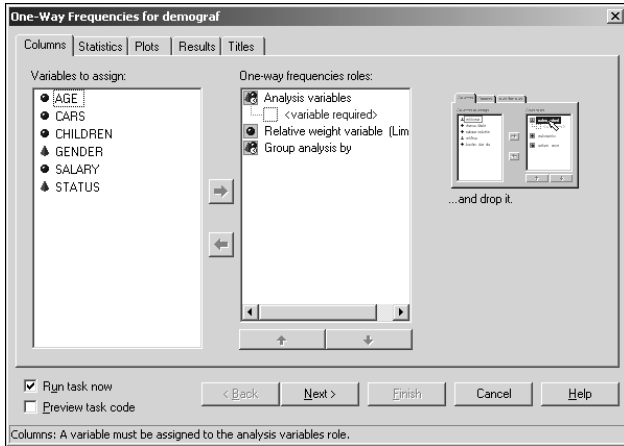
Select the Analysis pull down menu



The following window will appear.



Click **Finish** when done and the following report will appear.

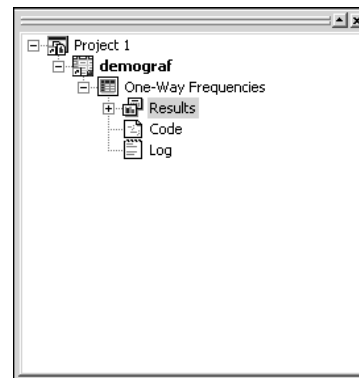
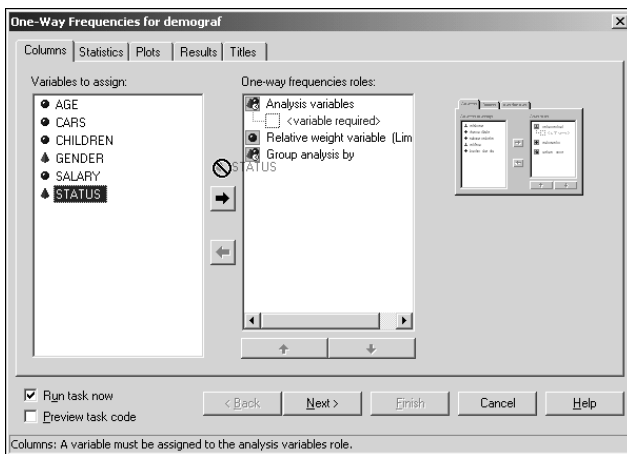


The variables available are listed on the left and are color and symbol coded based on numeric or character attributes.

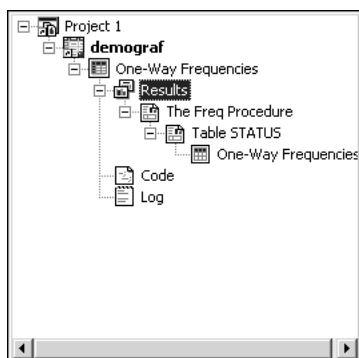
The Frequency attributes are listed in the middle and some simple instructions are listed on the right.

Drag the variable STATUS onto the Analysis variables attribute

You can see the results in the upper left hand window. Click on the Results item to expand it.

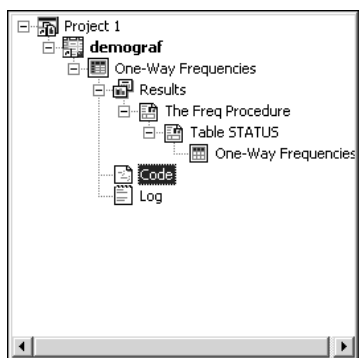


to achieve the following.



You will see the listing of the HTML report, a One-Way Frequency analysis.

Let's examine the code that was created.



Double click on the Code item to view it in the Enhanced Editor.

```
Code for One-Way Frequencies
/*
Code generated by SAS Enterprise Guide
DATE: 06Jan2001   TIME: 07:39:19 PM
TASK: Table Analysis
SERVER: Local
DATA: C:\sas\demograf
-----*/

FOOTNOTE "Generated by the SAS System (Local, 6SYSSCPL) on %SYSFUNC(DATE()), EURDPDE9.)";

/*-----*/
Call PROC FREQ to do the analysis.
*/

TITLE1 "One-Way Frequencies";
TITLE2 "Results";

PROC FREQ DATA=ECLIB000.demograf;
  TABLES STATUS /
  ALPHA=0.0500 SCORES=TABLE ;
RUN;TITLE;FOOTNOTE;RUN;
```

Double click on the Log item to view it.

```
Log for One-Way Frequencies
1 The SAS System 19:36 Saturday, January 6, 2001

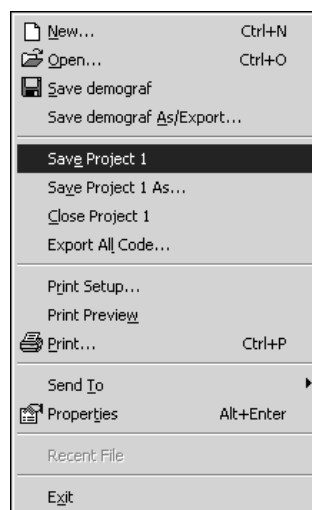
NOTE: Libname ECLIB000 refers to the same physical library as ECL00003.
NOTE: Libref ECLIB000 was successfully assigned as follows:
      Engine:          VB
      Physical Name:   C:\sas
1  LIBNAME ECLIB000 "C:\sas";
WARNING: VALIDVARNAME=ANY is an experimental option. The DATA Step and the SQL procedure have been
tested for use with this option. Other use of this option may cause undetected errors.
2  OPTIONS VALIDVARNAME=ANY;
3  OPTIONS DEV=ACTIVE;
4  ODS LISTING CLOSE;
5  ODS HTML GPATH=csaswork\location FILE=OBJECTSERVER DEV=ACTIVE;
NOTE: Writing HTML Body file: OBJECTSERVER
6  attributes(“OBJECTSERVER”=http://www.sas.com/misc/plugins/sasgraph.exe”)
7  NOGTITLE NOGFOOTNOTE STYLE=STYLES.EGSTYLE STYLESET=(URL="C:\Program Files\SAS
Institute\Enterprise Guide\Styles\egstyle.css")
8  ;
9  /*-----*/
Code generated by SAS Enterprise Guide
11 DATE: 06Jan2001   TIME: 07:39:19 PM
12 TASK: Table Analysis
13 SERVER: Local
14 DATA: C:\sas\demograf
-----*/
16
```

```
17 FOOTNOTE "Generated by the SAS System (Local, 6SYSSCPL) on %SYSFUNC(DATE()), EURDPDE9.) at
18 ! %SYSFUNC(TIME()), TIMEAMPMS.)";
19
20 -----*/
21 Call PROC FREQ to do the analysis.
22 */
23
24 TITLE1 "One-Way Frequencies";
25 TITLE2 "Results";
26
27 PROC FREQ DATA=ECLIB000.demograf;
28 TABLES STATUS /
29 ALPHA=0.0500 SCORES=TABLE ;
30 RUN;
NOTE: There were 35 observations read from the data set ECLIB000.DEMOGRAF.
NOTE: PROCEDURE FREQ used:
      real time    0.13 seconds
      cpu time     0.02 seconds
31
32 ! TITLE;FOOTNOTE;RUN;
33 QUIT;
34 ODS HTML CLOSE;
35 ODS LISTING;
36
1 The SAS System 19:36 Saturday, January 6, 2001
```

Saving Projects

To save the analysis created and stored in this project, it needs to be saved into a Project folder.

To do this, select the File pull down menu,



and specify the location for this project. You will need to know this location when you return to Enterprise Guide and want to use the analysis in this project.



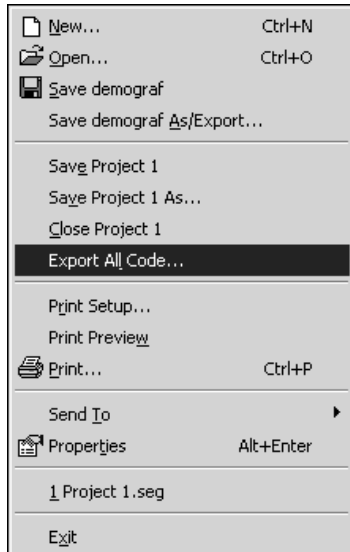
Type the name of the Project and click **Save** when complete.

Exporting Code

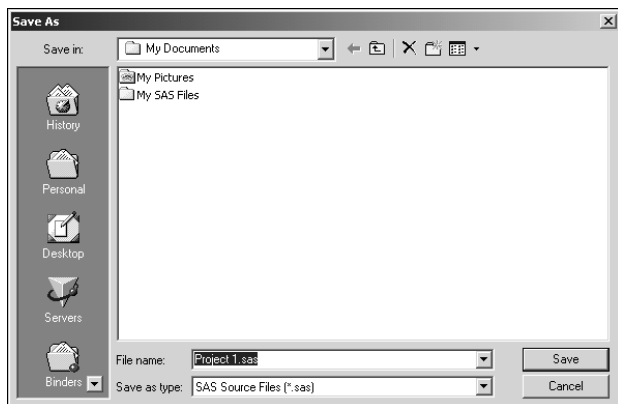
Many analysts and programmers use Enterprise Guide for quick creation of SAS programs that can be used in a standard SAS

environment. The code created to perform the analysis in each project can be exported for use outside Enterprise Guide.

To do this, from the File pull down menu, select



Choose a destination location.



Give the program a name and click when finished.

In SAS, when the file is opened, it looks like the following.

```

/*
-----
Code generated by SAS Enterprise Guide
DATE: 06Jan2001    TIME: 07:51:56 PM
TASK: Table Analysis
SERVER: Local
DATA: C:\ans\demograf
-----*/

FOOTNOTE "Generated by the SAS System (Local, 6SYSSCPL) on %SYSFUNC(DATE()), EURDFD9.) at %SYS
-----"

/*
Call PROC FREQ to do the analysis.
*/

TITLE1 "One-Way Frequencies";
TITLE2 "Results";

PROC FREQ DATA=ECLIB000.demograf;
  TABLES STATUS /
    ALPHA=0.0500 SCORES=TABLE ;
RUN; TITLE; FOOTNOTE; RUN;

```

It is important to note that librefs need to be adjusted. This process is only designed for saving the code and not the libref pointers used inside the Enterprise Guide session.

This paper consists of excerpts from Destiny Corporation's course materials. Copyright © 2001. This material may not be duplicated in any way. Please contact Destiny Corporation for more information.