

The Future Interface to the SAS[®] System for PCs – A First Glance

Carol Rigsbee, SAS Institute Inc., Cary, NC

ABSTRACT

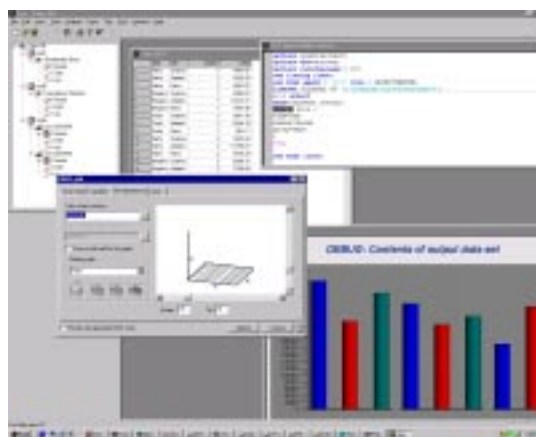
This paper describes a new user interface, code named “Jazz”, to the SAS System. Jazz is a state-of-the-art Microsoft Windows user interface that provides a highly integrated interface with the Windows operating system, other Windows applications and the Web. Jazz provides thin-client access to all V7 SAS System platforms, including Windows, Unix and mainframes. Jazz dramatically improves the SAS System's ease of use. Transparent access to data and full access to the Output Delivery System, ODS, are also provided.

INTRODUCTION

“Jazz” is the code name for the new Windows front end to the Version 7 SAS System. This thin-client Windows application provides transparent, simultaneous access to all Version 7 SAS System platforms, including Windows, Unix and mainframe systems. Jazz is a separate Windows application that communicates with the SAS System to access data, execute code and generate results. Behind the scenes, the SAS System does all the work so you get a native Windows user interface with the power, stability and scalability of the SAS System. When you use Jazz, it can simultaneously use both the SAS System for Windows on your local PC and versions of the SAS System for Windows, Unix or the mainframe that are installed on other machines. Jazz is a true thin client application – there is no need for SAS to be installed on the same machine where Jazz is installed.

USER INTERFACE

Jazz provides a set of dialogs, wizards and property sheets to accomplish tasks and generate reports through a point and click user interface. Jazz uses a project-centric user interface like many other Windows products. Data, tasks, and results display in a project tree. Tasks are data-centric, where the data can be any kind of data accessed from anywhere. Tasks generate SAS code and results. The Version 7 ODS system generates the results information. You can save the results as HTML that can be used later in any browser. The Jazz graphics results are live – you can click on a graph and modify the graph's presentation. Projects may also contain log information as well as “yellow sticky” note information. If you want to write SAS code or view the SAS code that Jazz has generated for you, Jazz provides a color-coded, syntax-checking SAS language editor. You can save your project and reopen it at a later time. All of your data, tasks and results are saved in your project.



DATA ACCESS

Jazz provides transparent access to both SAS and non-SAS data. For example, you could add to your project a data set from your MVS system and a Microsoft Excel spreadsheet from your PC. You can display the contents of both files in the Jazz data grid. You can use the variables from both files in all of the Jazz tasks. You can drag the Excel file and drop it on one of the systems where you have your SAS System installed, like MVS, to move the contents of the Excel file from your PC to the MVS system. From the Jazz Open dialog, you can navigate the native file systems of all machines where you have the SAS System installed.

SCHEDULER

One of the strengths of the SAS System is the ability to repeat tasks. Once you have created a project in Jazz, you can schedule either the entire project or a portion of that project to run in batch at a later time. You can specify that the generated results be published as an HTML file.

CONCLUSIONS

At the time this paper was written all the details concerning Jazz (including the official name of this application) were still being finalized. For more details, please refer to the SAS Institute web site, <http://www.sas.com>.

REFERENCES

SAS is a registered trademark or trademark of SAS Institute Inc. in the USA and other countries. ® indicates USA registration.

Other brand or product names are registered trademarks or trademarks of their respective companies.

Author Information:

Carol Rigsbee
SAS Institute Inc.
SAS Campus Drive
Cary, NC 27513
(919) 677-8000
e-mail: sasczw@sas.com