

# CATALOGER; View, Document, Compare SAS® Catalog Entries and SAS® Data Files

**Easily View the contents of multiple SAS catalogs side-by-side.**

OBJNAME	OBJTYPE	MODDATE	OBJDESC
ASCII	CLASS	06/14/96	ASCII View
CATALYST	CLASS	06/30/96	CATALOG
CFRAME	CLASS	06/30/96	CATALOG
CFRAMEB	CLASS	06/14/96	Magnifying
CFRAMEC	CLASS	06/14/96	Compare F
CFRAMED	CLASS	06/14/96	Compare D
CSCROLL	CLASS	06/30/96	CATALOG
FMTBROW	CLASS	06/14/96	Format Vie
FONT <td>CLASS</td> <td>06/14/96</td> <td>Font</td>	CLASS	06/14/96	Font
FRAMESMY	CLASS	06/14/96	FRAME wi
GETFKEYS	CLASS	06/14/96	Get Functi
IMAGEF	CLASS	06/14/96	Image Vie
IMAGEF2	CLASS	06/14/96	Select Libr

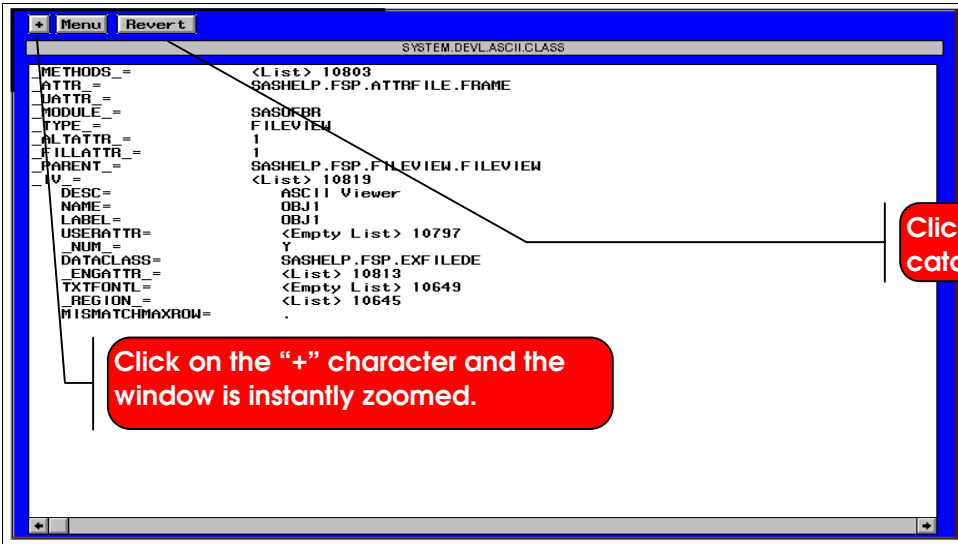
**Click on ASCII.CLASS and the list displays.**

OBJNAME	OBJTYPE	MODDATE	OBJDESC
AAUTOREG	CBT	09/21/95	ASSIST HELP: Th
ABOUT	CBT	09/21/95	ASSIST HELP: A
ACALC	CBT	09/21/95	ASSIST: CBT for
ACALDATA	CBT	09/21/95	ASSIST HELP: Cr
ACALENDA	CBT	09/21/95	ASSIST HELP: Pr
ACANC	CBT	09/21/95	ASSIST HELP: Ca
ACATALOG	CBT	09/21/95	DATA: Help for b
ACIMPORT	CBT	09/21/95	BASE: Help for C
ACOMMAN	CBT	09/21/95	ASSIST HELP: Co
ACORR	CBT	09/21/95	ASSIST HELP: SA
ACORR	CBT	09/21/95	ASSIST HELP: Co
ACORR	CBT	09/21/95	BASE: Help for C
ACREATE	CBT	09/21/95	ASSIST HELP: Cr
ACSTMTRN	CBT	09/21/95	ASSIST: ? help f

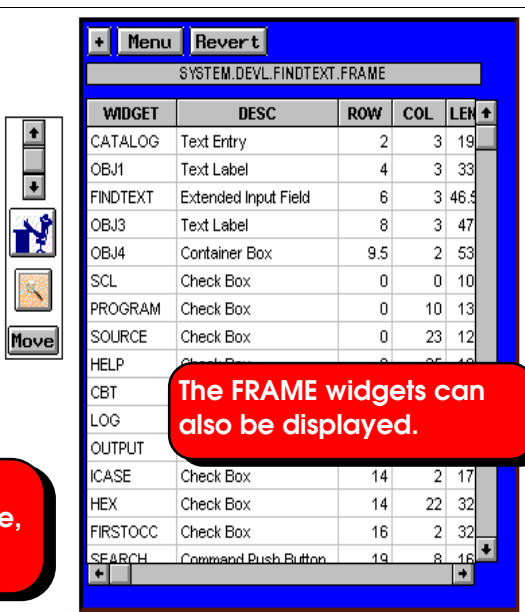
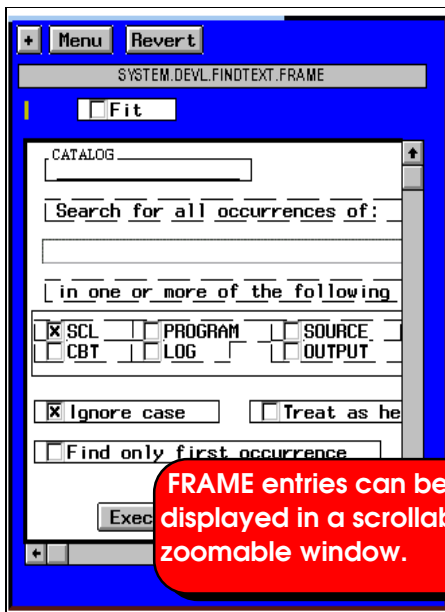
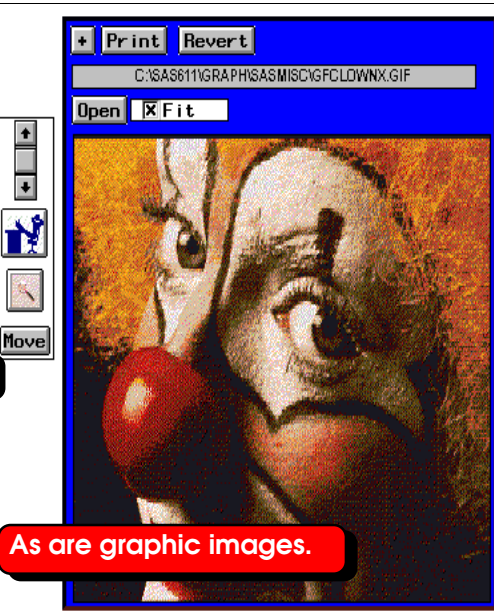
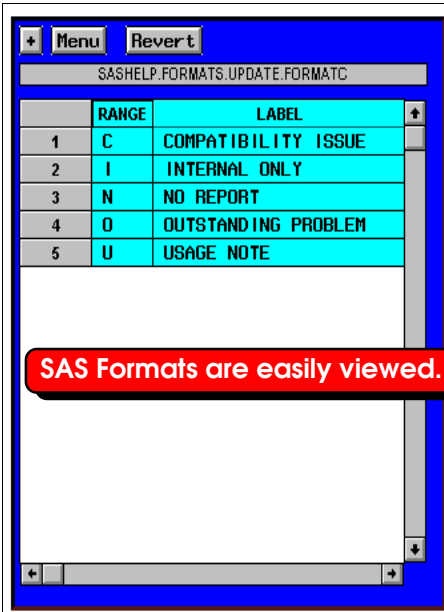
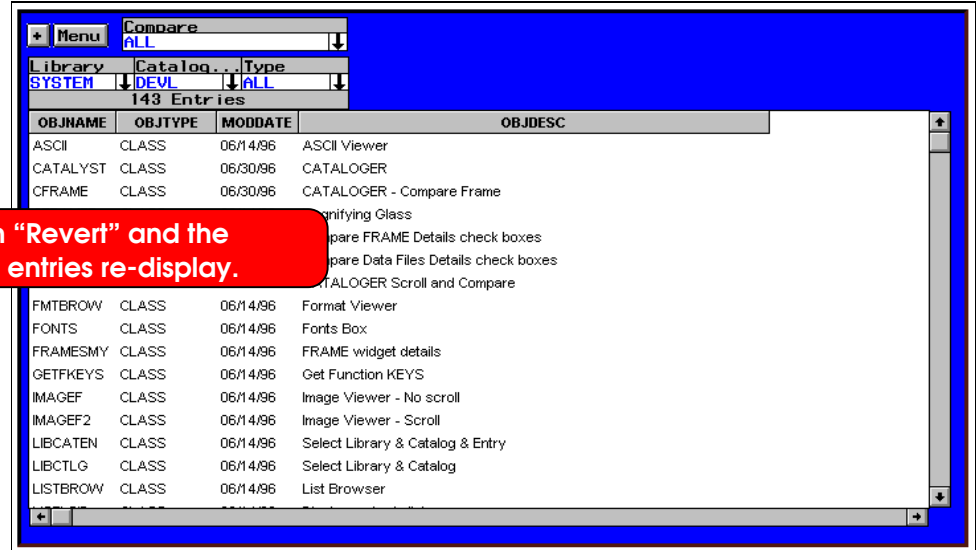
**Expand a sublist by simply clicking on it. Clicking again collapses it.**

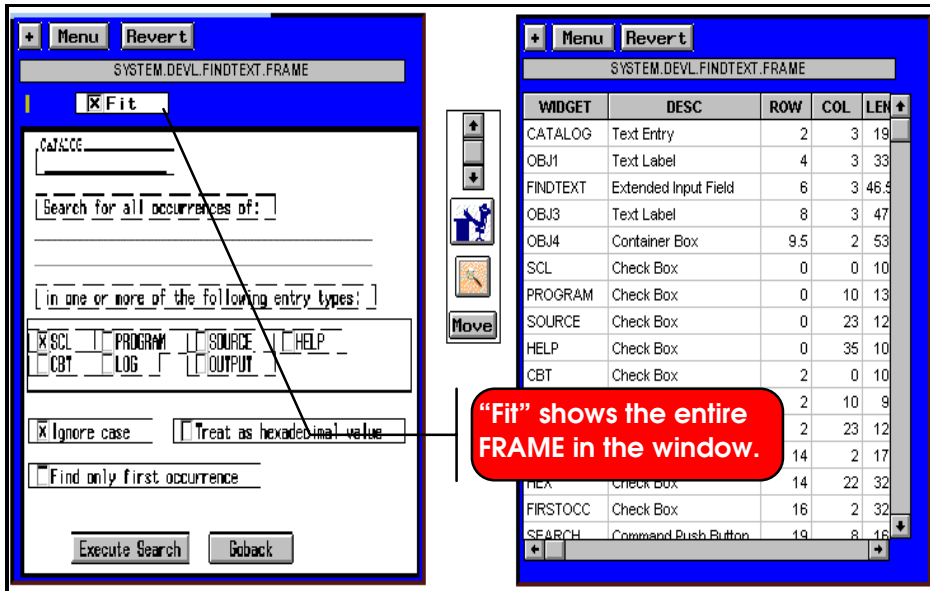
OBJNAME	OBJTYPE	MODDATE	OBJDESC
A	FRAME	06/30/96	A.FRAME
ATTRIBUTE	FRAME	06/14/96	Custom At
CDATA	FRAME	06/14/96	Compare D
CFRAME	FRAME	06/14/96	Compare F
COMPOPT	FRAME	06/14/96	Text comp
DCOMPARE	FRAME	06/14/96	Compare 2
DCOMPQ	FRAME	06/14/96	Message 3
DCOMPSHW	FRAME	06/14/96	Output of
DEMO	FRAME	06/23/96	DEMO.FR
FINDTEXT	FRAME	06/14/96	Search for
GETENTRY	FRAME	06/14/96	Choose an
GETKEYS	FRAME	06/14/96	Get Functi

OBJNAME	OBJTYPE	MODDATE	OBJDESC
AAUTOREG	CBT	09/21/95	ASSIST HELP: Th
ABOUT	CBT	09/21/95	ASSIST HELP: A
ACALC	CBT	09/21/95	ASSIST: CBT for
ACALDATA	CBT	09/21/95	ASSIST HELP: Cr
ACALENDA	CBT	09/21/95	ASSIST HELP: Pr
ACANC	CBT	09/21/95	ASSIST HELP: Ca
ACATALOG	CBT	09/21/95	DATA: Help for b
ACIMPORT	CBT	09/21/95	BASE: Help for C
ACOMMAN	CBT	09/21/95	ASSIST HELP: Co
ACORR	CBT	09/21/95	ASSIST HELP: SA
ACORR	CBT	09/21/95	ASSIST HELP: Co
ACORR	CBT	09/21/95	BASE: Help for C
ACREATE	CBT	09/21/95	ASSIST HELP: Cr
ACSTMTRN	CBT	09/21/95	ASSIST: ? help f



Click on "Revert" and the catalog entries re-display.





CATALOGER displays SAS catalog entries in a simple point & click fashion including:

- All list-based entries including SLIST, LIST, CLASS, EIS, RESOURCE, FOLDER.
- FRAME entries including the FRAME image, widgets, & associated SCL entry.
- PROGRAM, SCL, SOURCE, HELP, CBT, LOG, OUTPUT.
- FORMATS
- GRSEG & IMAGE.
- Entries that are not otherwise conveniently viewed in a scrollable window: KEYDEF, FORM, DEV, FONT.
- PMENU & TOOLBAR.
- Special types including ASCII files and Video (\*.AVI files).

## PRINTING

You can print anything you see in a CATALOGER window.

You can print:

- Directly to the printer.
- To a file.
- Directly to a Microsoft Word® document. CATALOGER can insert all printed output directly into a Microsoft Word document.

## BATCH PRINTING

You can print all catalog entries of one type at once. For example, you can print all FRAME entries in a catalog - the FRAME images, widgets, and associated source code by the push of a button!

This gives you instant publication-quality SAS catalog documentation.

**Compare catalog entries.**  
 Display entries in one catalog that are not in the other.  
 Display entries in one catalog that are older/newer than the same-named entries in the other.

**Easily view detailed differences in FRAME entries.**  
 Select one or more checkboxes to view specific differences.

OBJNAME	OBJTYPE	DIFANY	DIFWIDG	DIFSC	DIFCOMP	DIFRES	DIFDATES
ATTRIBUTE	FRAME	0	0	0	0	0	0
DCOMPARE	FRAME	0	0	0	0	0	0
DCOMPQ	FRAME	0	0	0	0	0	0
DCOMPSHW	FRAME	0	0	0	0	0	0
DEMO	FRAME	1	1	1	1	1	1
FINDTEXT	FRAME	0	0	0	0	0	0
GETENTRY	FRAME	1	0	0	0	0	0
GETKEYS	FRAME	0	0	0	0	0	0

**Perform side-by-side comparison of all text-based entries - SCL, SOURCE, SLIST, CLASS, etc.**

**"Stop at Mismatch" displays popup when lines mismatch.**  
 Mismatched lines are highlighted.

Compare Two Files

Number of mismatches: 4 Click on a row to view first char. mismatch

ROW1	SYSTEM.DEVL.IMAGEF.SCL	ROW2	SYSTEM.PROD.IMAGEF.SCL
206	call send(w,'_IS_SWAPPED	206	call send(w,'_IS_SWAPPED
208	if not swapped then	208	if not hidden then
230	call send(w,'_IS_SWAPPED	230	call send(w,'_IS_SWAPPED
232	if swapped then call sen	232	if hidden then call send

Summary of mismatches is displayed.

OK Print

Compare two text-based entries

```

SYSTEM.DEVL.IMAGEF.SCL
00201 do i=1 to listlen(lsidtemp);
00202   do i=1 to listlen(lsidtemp);
00203     w=getitem1(lsidtemp,i);
00204     call send(w,'_IS_SWAPPED
00205   if not swapped then
00206   do;
00207     call send(w,'_SWAP_OUT
00208     lsidswap=insert1(lsid
00209   end;
00210 end;
00211
SYSTEM.PROD.IMAGEF.SCL
00201 do i=1 to listlen(lsidtemp);
00202   do i=1 to listlen(lsidtemp);
00203     w=getitem1(lsidtemp,i);
00204     call send(w,'_IS_SWAPPED
00205   if not hidden then
00206   do;
00207     call send(w,'_SWAP_OUT
00208     lsidswap=insert1(lsid
00209   end;
00210 end;
00211
  
```

All mismatched lines are highlighted.

LINE NUMBERS TO CHECK Top Bottom Hex HexOn

Compare Stop at Mismatch Reset Mismatches Options

Compare two SAS Data Files

SYSTEM.CLASS1					SYSTEM.CLASS2				
	NAME	SEX	AGE	HEIGHT		NAME	SEX	AGE	HEIGHT
1	Alfred	M	14	69.00	1	Alfred	M	14	69
2	Alice	F	13	56.50	2	Becka	F	13	65.3
3	Becka	F	13	65.30	3	Duke	M	14	63.5
4	Duke	M	14	63.50	4	Gail	F	14	64.3
5	Guido	F	15	67.00	5	Guido	M	15	67
6	James	M	12	57.30	6	James	M	12	57.3
7	Jeffrey	M	13	62.50	7	Jeffrey	M	13	62.5
8	John	M	12	59.00	8	John	M	12	59
9	Karen	F	12	56.30	9	Karen	M	12	56.3
10	Kathy	F	12	59.6	10	Kathy	M	12	59.6
11	Mary	F	12	66.5	11	Mary	M	12	66.5
12	Philip	M	16	72.00	12	Philip	M	16	72

Compare two SAS data sets side-by-side.

COMPARISON VARS SUBSET Top Bottom

COMPARISON VARS SUBSET Top Bottom

Compare Stop at Mismatch Reset Mismatches Options

Compare SAS Data File Details

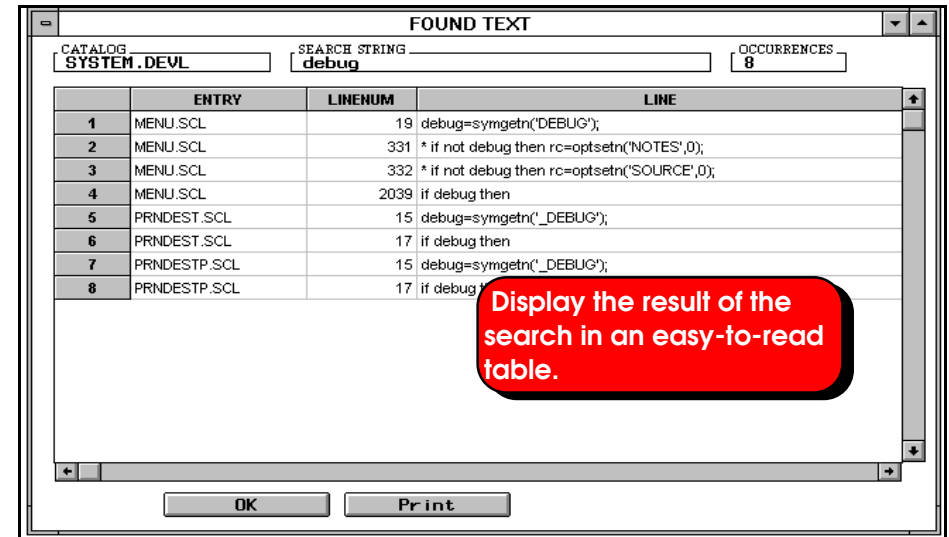
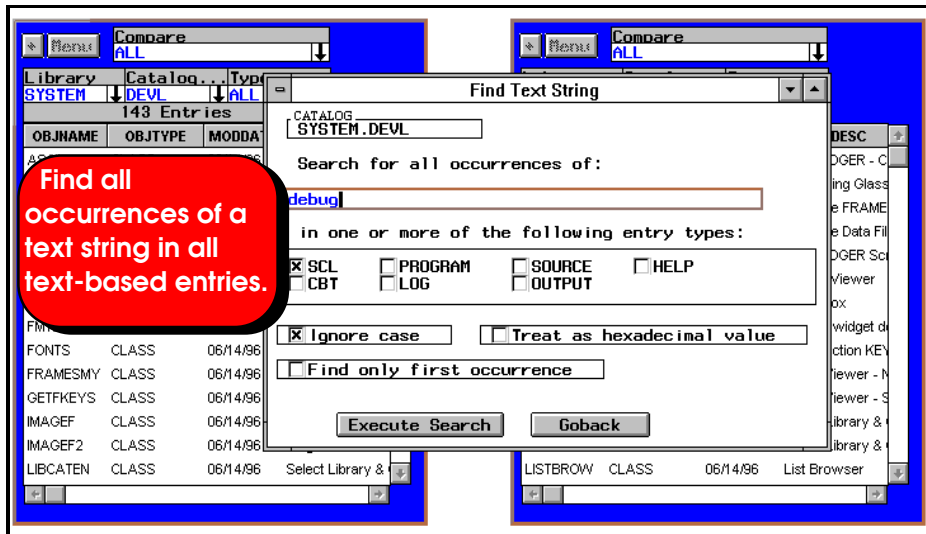
Any Difference

- Dif. # of obs.
- Dif. # of variables
- Dif. # of deleted obs
- Dif. BUFSIZE values
- Dif. index types
- Dif. Protect values
- Dif. COMPRESS values
- Dif. REUSE values
- Dif. modif. date/time

2 Entries									
MEMNAME	MEMTYPE	DIFANY	DIFOBS	DIFVAR	DIFDELOB	DIFINDX	DIFPROT	DIFCOMP	DIFRE
FITNESS	DATA	1	0	0	0	0	0	0	0
HIGHWAY	DATA	1	0	0	0	0	0	0	0

Easily view detailed differences between SAS data sets.

Select one or more checkboxes to view specific differences.



## OTHER FEATURES:

- Any number of CATALOGER windows can be created. This means any number of catalogs or SAS data libraries can be concurrently viewed and compared.
- Display SAS data sets in one library that are not in another library.
- Display SAS data sets in one library that are older/newer than the same-named ones in another library.
- New CATALOGER windows can be created at run-time.
- CATALOGER windows can be resized and moved at run-time.
- Ability to synchronously scroll the contents of multiple CATALOGER windows.
- SCL and SOURCE entries are printed with line numbers.
- Ability to export images, including FRAME images, to different image types (e.g. BMP, TIFF, GIF, etc.).

## For more information, contact:

Michael Gilman  
 Qualex Consulting Services, Inc.  
 263 Congressional Lane  
 Suite 707  
 Rockville, MD 20852  
 301.221.7011

SAS® is a registered Trademark or Trademarks of SAS Institute, Inc. in the USA and other countries. ® indicates USA registration.

Word® and Windows are trademarks of Microsoft