

Customizing Toolbars

Deb Cassidy, Cardinal Health, Inc.

Abstract

Version 6.11 TS Level 0040 of SAS® software has a new toolbar for FSP products. While the new icons are an enhancement for many applications, they weren't for one of the applications I support. This paper will give a brief overview of how to customize toolbars for an application.

Introduction

Version 6.11 TS Level 0040 has a new toolbar for FSP products. Before, all windows had the standard toolbar. Now under FSEdit and FSBrowse you get icons for OPEN a dataset, NEXT observation, PREVIOUS observation, ADD a new blank observation, DUPLICATE an observation, DELETE an observation, FSEdit MENU and FSEdit HELP. (FSView has a slightly different set of icons.) Essential to an application I support was the ability to print the screen at any point during data entry. The application was built with the application workspace menu turned off so users had to use the icons which no longer included one for printing. Needless to say, I received a phone call within hours of upgrading the users to Version 6.11.

Version Differences

Some of you may be wondering why I didn't notice the change in the icons and give them the print icon before I gave users the upgraded application. Simple, I still saw the old icons when I ran the application. This was really strange when you consider the application resides on a network drive and we were definitely looking at the same files. In fact, no matter what I tried, I could not figure out where the other users were getting these icons. The enhancements manual for Version 6.11 didn't mention anything about changes. A call to SAS Tech Support didn't provide the answer but gave me some things to check. I have another login ID and created a totally new SAS icon and new directories for SASWORK and SASUSER under that ID. I finally saw the icons my users were

seeing. When I called Tech Support again, they confirmed the FSP toolbar was new in TS Level 0040 but was not found TS Level 0020. While applications reside on a network drive, SASWORK and SASUSER reside on the hard drive of each user. I had started testing Version 6.11 with the older TS Level which my users never saw. My profile was based on the older level so SAS didn't use the enhanced toolbar. I had several options.

Forcing FSP to Use the Standard Toolbar

Forcing FSP products to use the standard toolbar instead of the FSP toolbars is quite easy. Select OPTIONS→PREFERENCES from the pull-down menu. Make sure the SWITCHING option under the Tools section is NOT checked.

Modifying a Toolbar

However, a better choice for the application was to add the printer icon to the new FSP toolbar.

To edit a tool bar, simply select OPTIONS → EDIT TOOLS from the menu. This will give you the tool bar for the current screen. If you don't know a command, start at a screen which has the icon you want to use. In this case, I first looked at the standard tool bar and scrolled down to find the printer icon (Figure 1). The command for printing is DLGPRT VERIFY NODISPLAY. (Please note the commands may vary by operating system.) You can find out more information about the options by looking up DLGPRT in HELP. The help tip is "Print contents of the active window" and the Tip Text is "Print".

After I made a note of the command and tips, I went to the FSEdit window and opened the toolbox there (Figure 2). You'll notice the icons are different. Also this toolbox is called SASUSER.PROFILE.FSEMAIN while the normal toolbox is SASUSER.PROFILE.TOOLBOX.

Scroll down to where you want to add the new icon. Highlight the icon following the location

of your new icon. Click the ADD button which will create a blank icon (Figure3).

Fill in the Command, Help Text and Tip Text boxes with the appropriate information. Click the BROWSE button to select a bitmap image for your icon. You can also remove icons, add separators or change the order of the icons. Once you have made all your changes, click SAVE or SAVE AS. See the discussion below for which choice is best.

Directing the Application to the New Toolbar

There are several ways to direct the application to use the new toolbar. You can modify your config file or autoexec to always use the new toolbar on all windows. In your autoexec, include the following command:

```
dm 'toolload bar general.date_rng.custtool';
```

In this case, I stored the toolbar in a different location from SASUSER and also gave it a different name so it is obvious that this is a customized tool bar. *General* is the libref, *date_rng* is the catalog and *custtool* is the entry giving the name of the toolbox. Don't forget to turn SWITCHING off if you want the toolbar to be in effect for all windows.

Depending upon how you start the FSP product, you can specify the toolbar only be used there. Since I opted for an easier method, I didn't test the code so I won't discuss it here.

This is the easy way to apply the new toolbar to just FSEDIT and not all screens. The modified toolbar is saved to a new profile location. The catalog is still *PROFILE* and the entry is still *FSEMAIN*. This profile is then copied to each user's hard drive to a location unique for that application. All users will have the same directory name. I used C:\CSTMPRFL for "custom profile" and created a sub-directory for

each application. The config file includes the following option that redirects SASUSER to that location:

```
-sasuser c:\cstmprfl\divsales
```

If you are on a shared system, you must be careful where you are saving your edited toolbars because you could be affecting what other users see or they could edit your customized toolbars.

Summary

SAS System enhancements may not always be appropriate for an existing application. This paper briefly covers how to change the toolbar to have the most appropriate toolbar for your application. Version 6.11 TS Level 0040 also has new toolbars for SCL and frame entries in addition to the FSP products.

You also are not limited to SAS commands in your toolbar. In the *GENERAL.DATE_RNG.CUSTTOOL* example above, the icon actually opens up a dataset using FSBROWSE. This particular dataset identifies the data ranges of data for a variety of datasets they may access.

SAS is a registered trademark of SAS Institute Inc. in the USA and other countries. ® indicates USA registration.

CONTACT

Deb Cassidy
Senior SAS Programmer/Analyst
Cardinal Health, Inc.
5555 Glendon Court
Dublin, OH 43016

(614) 717-7136 (voice)
(614) 717-8136 (fax)
Dcassidy@cardhealth.com (e-mail)

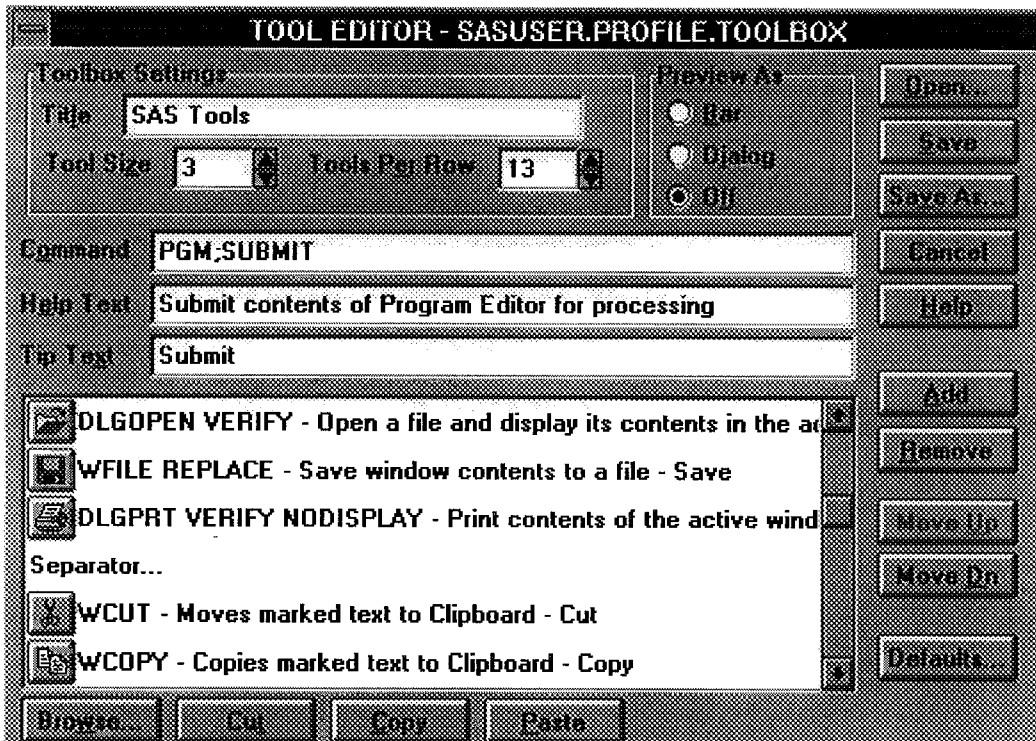


Figure 1 - Standard Toolbar

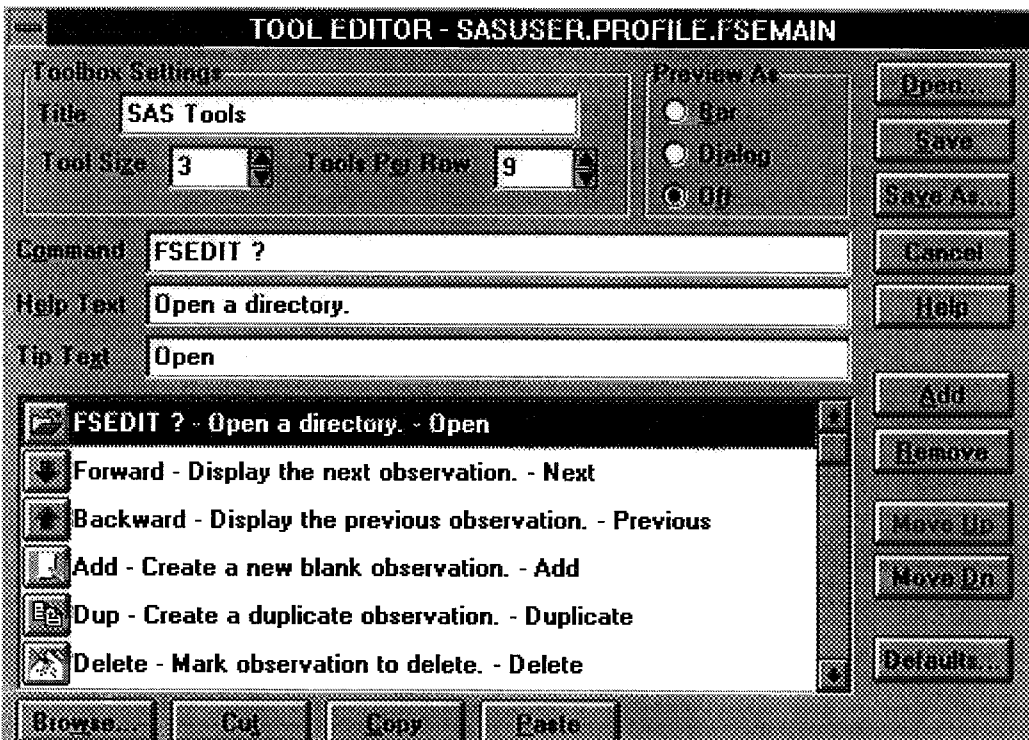


Figure 2 - FSEDIT Toolbar

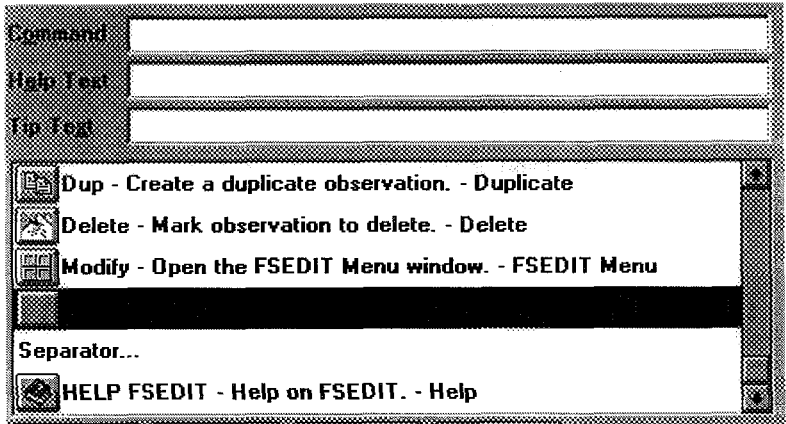


Figure 3 - Adding a new icon