

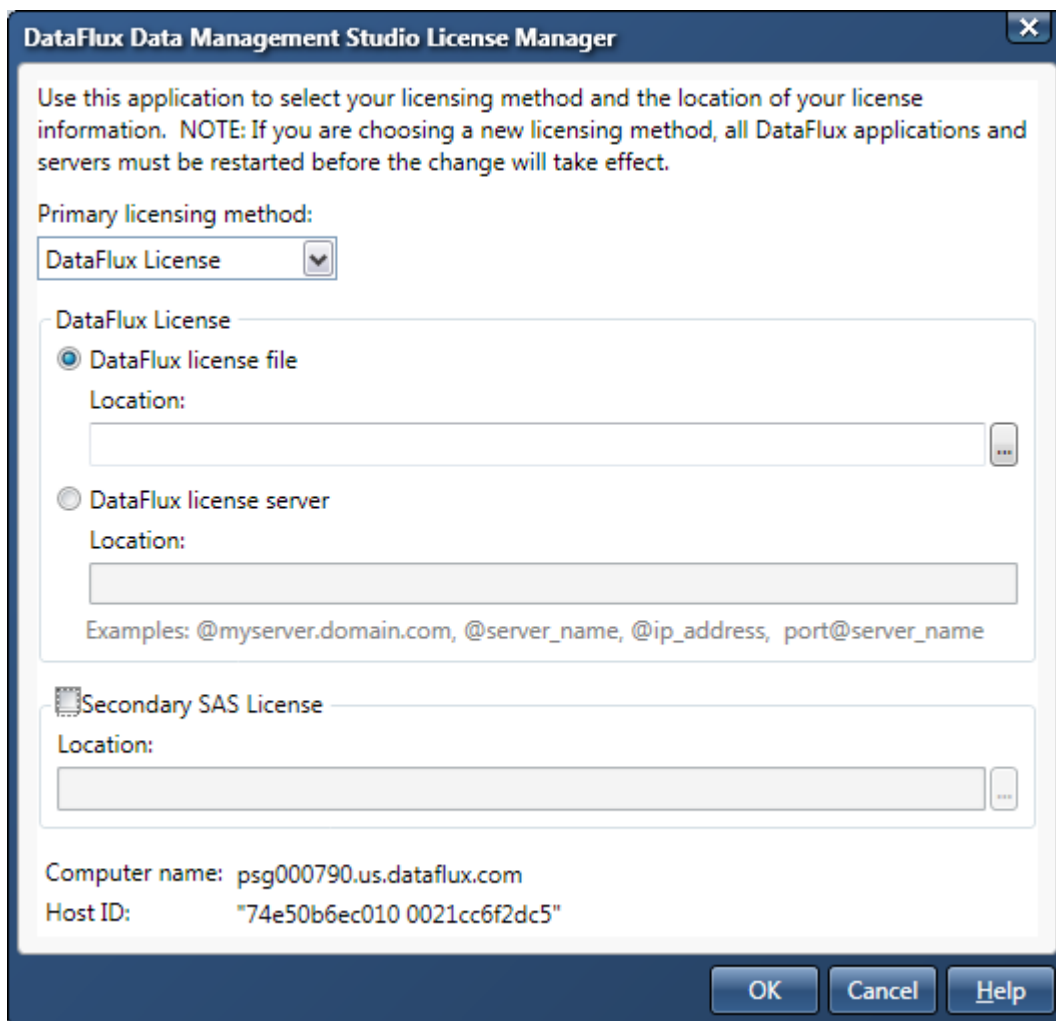
How to Apply SAS SETINITS to DataFlux Products

Table of Contents

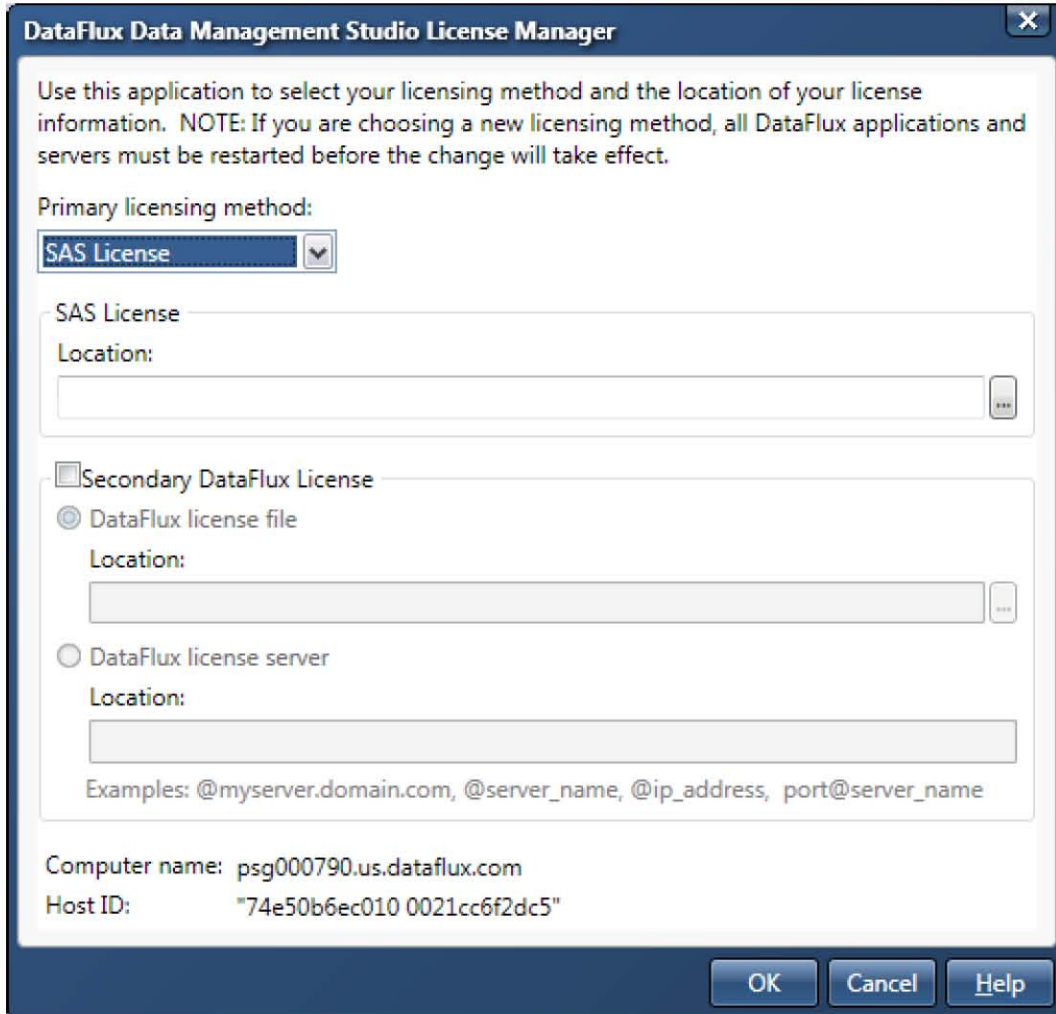
How to request and configure a SAS SETINIT for the DataFlux Data Management Studio	3
How to request and configure a SAS SETINIT for the DataFlux Data Management Server	6
How to request and configure a SAS SETINIT for the DataFlux Federation Server	7
How to request and configure a SAS SETINIT for the DataFlux Authentication Server	8
How to request and configure a SAS SETINIT for DataFlux dfPower Studio	9
How to request and configure a SAS SETINIT for DataFlux Integration on Windows	10
How to request and configure a SAS SETINIT for DataFlux Integration on Unix	11
How to request and configure a SAS SETINIT for the DataFlux dfIntelliServer	12

How to request and configure a SAS SETINIT for the DataFlux Data Management Studio

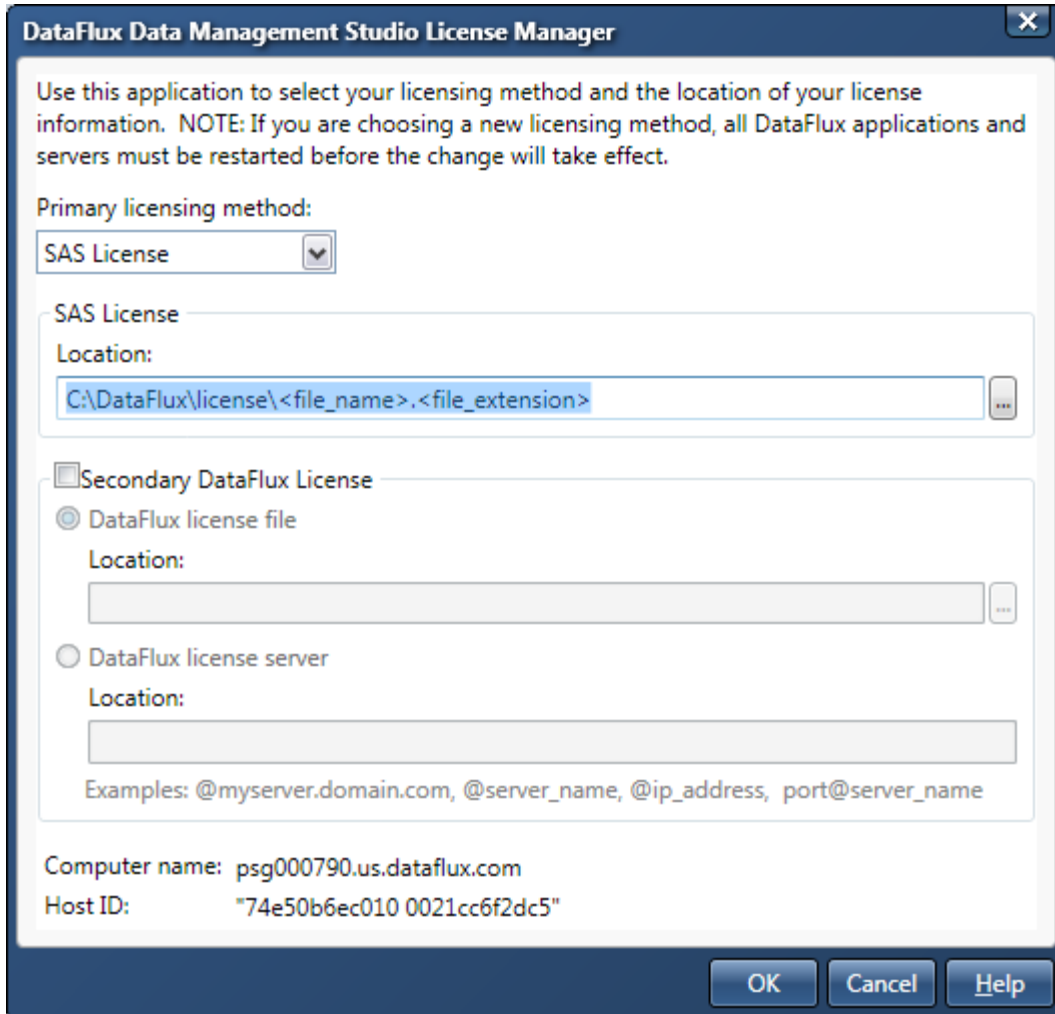
1. Obtain a SAS SETINIT from [here](#). You will receive an email with the SAS SETINIT.
2. Save the SAS SETINIT to a location that is accessible to Data Management Studio.
3. On the computer where Data Management Studio is installed, select **Start > Programs > DataFlux > License Manager 2.2**. The License Manager dialog is displayed.



4. In the License Manager dialog, select **SAS License** as the primary licensing method.



5. In the **SAS License file** section of the dialog, specify the location of the SAS SETINIT.
NOTE: SAS license names may be different from version to version.



6. When finished, click **OK**.

How to request and configure a SAS SETINIT for the DataFlux Data Management Server

1. Obtain a SAS SETINIT from [here](#). You will receive an email with the SAS SETINIT.
2. Save the SAS SETINIT to a location that is accessible to the Data Management Server.
3. On the computer where Data Management Server is installed modify the app.cfg file. This file is located in the etc directory of the installation. Within this file are 2 settings that need to be modified.
 - A. Make sure the setting for the license is set to SAS. Eg.
 - a. base/primary_license = SAS
 - B. Make sure the location of the license is set. Eg.
 - a. UNIX
 - i. base/primary_license_loc = /opt/dataflux/file_name.file_extension
 - b. Windows:
 - i. base/primary_license_loc = C:\Program Files\DataFlux\DMServer\2.2\etc\license\file_name.file_extension
 - C. Restart the Data Management Server

How to request and configure a SAS SETINIT for the DataFlux Federation Server

1. Obtain a SAS SETINIT from [here](#). You will receive an email with the SAS SETINIT.
2. Save the SAS SETINIT to a location that is accessible to the DataFlux Federation Server.
3. On the computer where the DataFlux Federation Server is installed modify the dfs_serv.xml file. Within this file you will need to modify the provider and the location. Below is an example.

Windows

Syntax

```
<OptionSet name="License">
  <OptionSet name="Primary">
    <Option name="Provider">SAS</Option>
    <Option name="Location"> C:\Program
      Files\DataFlux\FederationServer\2.1\etc\license\file_name.file_extension</Option>
  </OptionSet>
</OptionSet>
```

Unix

Syntax

```
<OptionSet name="License">
  <OptionSet name="Primary">
    <Option name="Provider">SAS</Option>
    <Option name="Location"> /opt/dataflux/file_name.file_extension</Option>
  </OptionSet>
</OptionSet>
```

4. Restart the Federation Server

How to request and configure a SAS SETINIT for the DataFlux Authentication Server

1. Obtain a SAS SETINIT from [here](#). You will receive an email with the SAS SETINIT.
2. Save the SAS SETINIT to a location that is accessible to the DataFlux Authentication Server.
3. On the computer where the DataFlux Authentication Server is installed modify the `as_serv_aspsql.xml` file. Within this file you may need to modify the provider and the location. Set the provider to SAS and set the location. Below is an example.

Windows

Syntax

```
<OptionSet name="Primary">  
  <Option name="Provider">SAS</Option>  
  <Option name="Location">C:\Program  
    Files\DataFlux\AuthenticationServer\2.1\etc\license</Option>  
</OptionSet>
```

Unix

Syntax

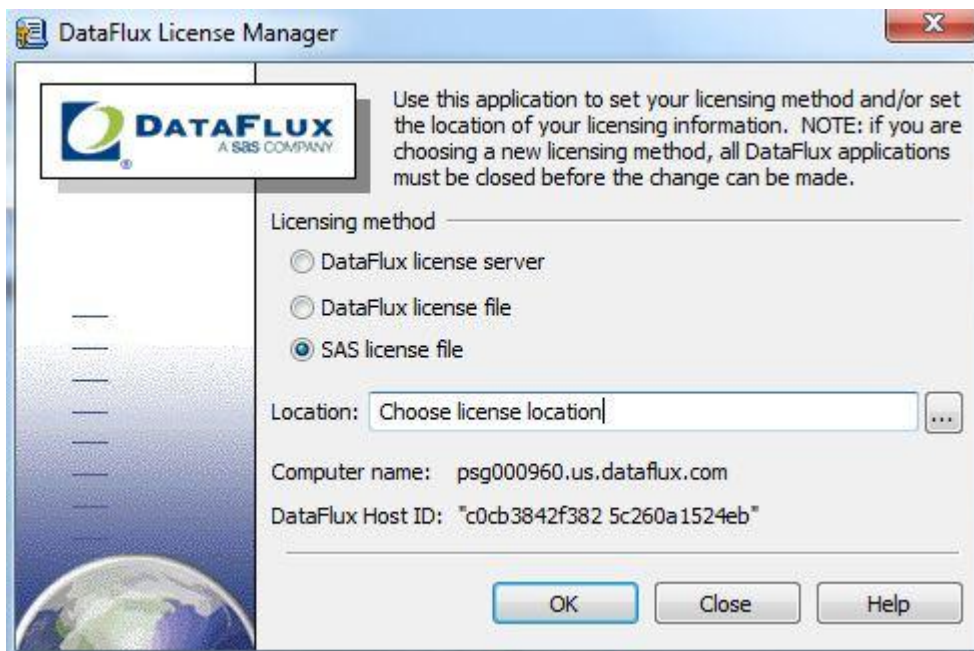
```
<OptionSet name="Primary">  
  <Option name="Provider">SAS</Option>  
  <Option name="Location">/opt/dataflux/AuthenticationServer/2.1/etc/license</Option>  
</OptionSet>
```


How to request and configure a SAS SETINIT for DataFlux dfPower Studio

1. Obtain a SAS SETINIT from [here](#). You will receive an email with the SAS SETINIT.
2. Save the SAS SETINIT to a location that is accessible to DataFlux dfPower Studio.
3. To specify licensing location using the License Manager, click **Start > Programs > DataFlux dfPower Studio 8.X > License Manager**. In the License Manager dialog, select the **Licensing Method** and enter the **Location** of your license server or file.

In the **SAS License file** section of the dialog, specify the location of the SAS SETINIT.

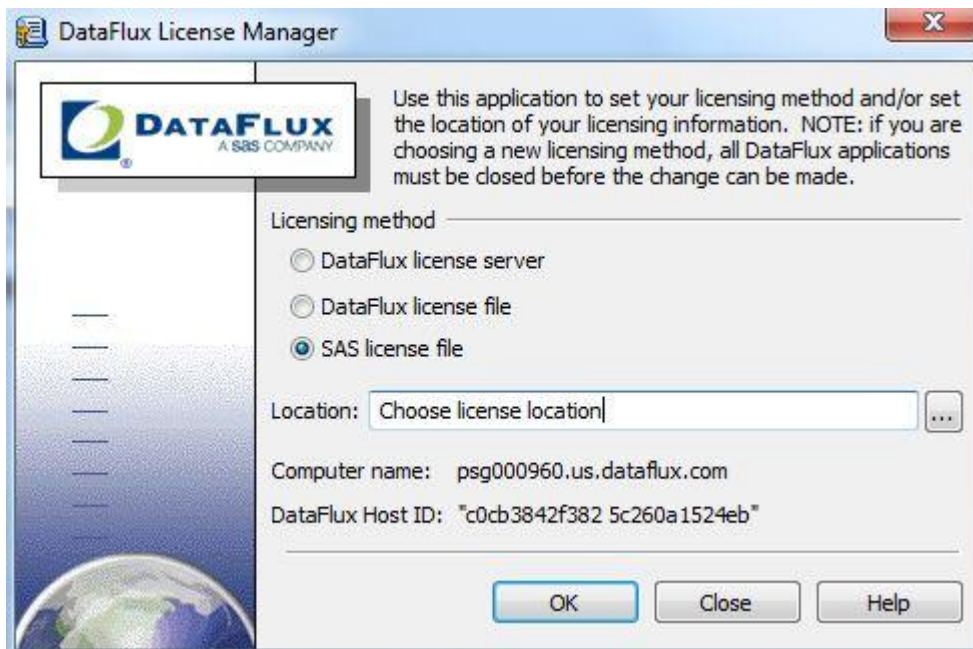
NOTE: SAS license names may be different from version to version.



How to request and configure a SAS SETINIT for DataFlux Integration on Windows

1. Obtain a SAS SETINIT from [here](#). You will receive an email with the SAS SETINIT.
2. Save the SAS SETINIT to a location that is accessible to DataFlux Integration Server.
3. To specify licensing location using the License Manager, click **Start > Programs > DataFlux dfPower Studio 8.X > License Manager**. In the License Manager dialog, select the **Licensing Method** and enter the **Location** of your license server or file.

In the **SAS License file** section of the dialog, specify the location of the SAS SETINIT.
NOTE: SAS license names may be different from version to version.



4. Restart the Integration Server

How to request and configure a SAS SETINIT for DataFlux Integration on Unix

1. Obtain a SAS SETINIT from [here](#). You will receive an email with the SAS SETINIT.
2. Save the SAS SETINIT to a location that is accessible to DataFlux Integration Server.
3. Specify the SAS license mode. From the bin directory of the Integration Server installation run "dfm". This tells you the mode of the license. To change the mode to SAS run "dfm -m". Example below.

```
-bash-3.00$ ./dfm
DataFlux License Manager
Current licensing mode: DataFlux (FLEXnet)
Current licensing version: 1.1
Generating machine code...
lmhostid - Copyright (c) 1989-2008 Acrecco Software Inc. All Rights Reserved.
The FLEXnet host ID of this machine is ""00145e16b45e 00145e16b460""
Only use ONE from the list of hostids.
Run './dfm -m' if you need to change the licensing mode.
-bash-3.00$ ./dfm -m
DataFlux License Manager
Current licensing mode: DataFlux (FLEXnet)
Current licensing version: 1.1
Available licensing modes:
    1: DataFlux (FLEXnet)
    2: DataFlux (Legacy)
    3: SAS
Enter the mode number to activate or 'x' to exit: █
```

4. In the dfexec.cfg file confirm that the license location is set.
license location = /opt/dataflux/file_name.file_extension

5. Restart the Integration Server

How to request and configure a SAS SETINIT for the DataFlux dfIntelliServer

1. Obtain a SAS SETINIT from [here](#). You will receive an email with the SAS SETINIT.
2. Save the SAS SETINIT to a location that is accessible to the DataFlux dfIntelliServer.

For UNIX, refer to steps 3-5.
For Windows, refer to steps 6-13.

UNIX Instructions:

3. On the computer where DataFlux dfIntelliServer is installed, modify the dfserv.cfg file. This file is located in the etc directory of the installation. Specify the "license location" value to the location of the SAS SETINIT.

Eg: `license_location = /opt/dataflux/file_name.file_extension`

4. In the bin directory of the installation, execute `./dfim -m` to run the License Manager. Select option 3 to change the license mode to SAS.

```
Prompt> ./dfim -m

DataFlux License Manager

Current licensing mode: DataFlux (FLEXnet)
Current licensing version: 1.1

Available licensing modes:

  1: DataFlux (FLEXnet)
  2: DataFlux (Legacy)
  3: SAS

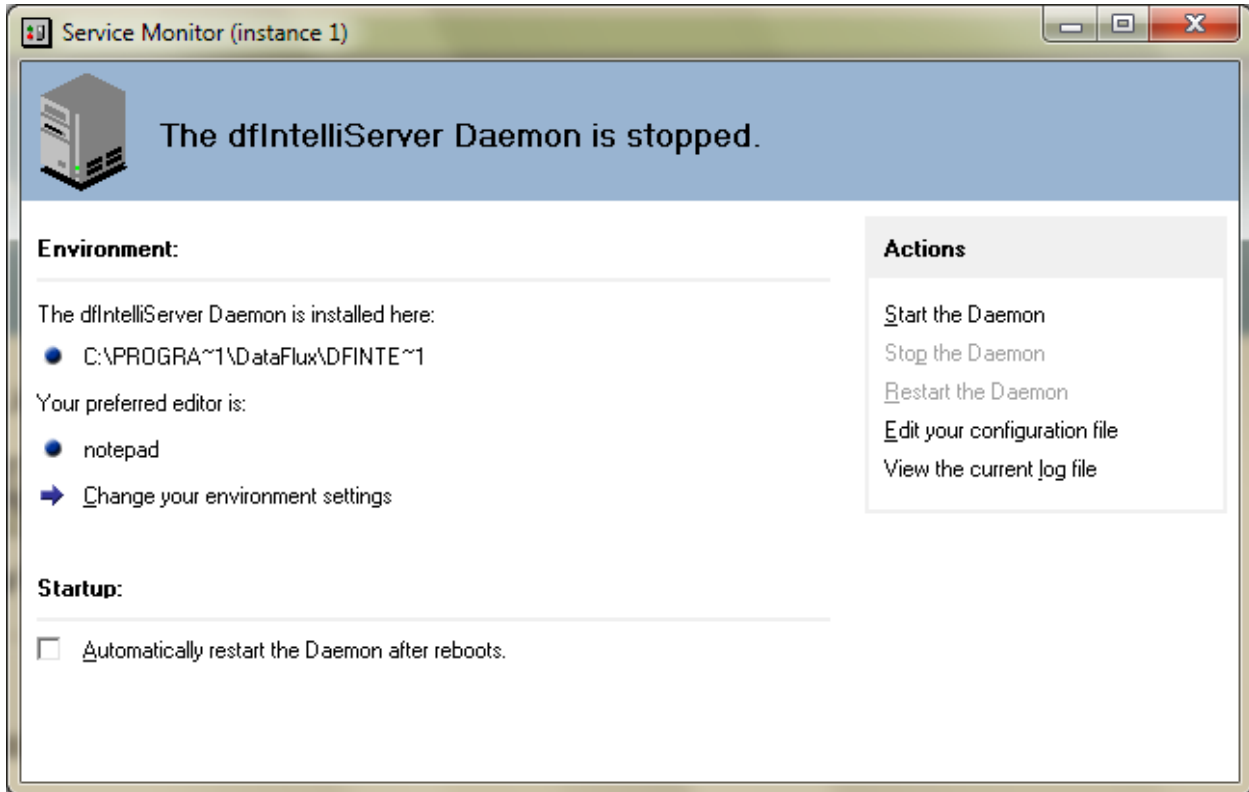
Enter the mode number to activate or 'x' to exit: 3

Changed licensing mode to SAS.
```

5. Restart the DataFlux dfIntelliServer

WINDOWS Instructions:

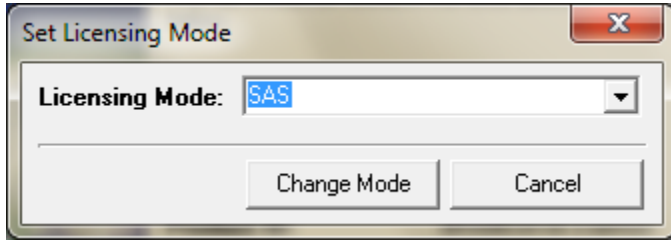
6. On the computer where DataFlux dfIntelliServer is installed, select **Start > Programs > DataFlux dfIntelliServer > Service Monitor**. Click **Stop the Daemon** to stop DataFlux dfIntelliServer.



7. Select **Start > Programs > DataFlux dfIntelliServer > Licensing**. The Licensing dialog is displayed.

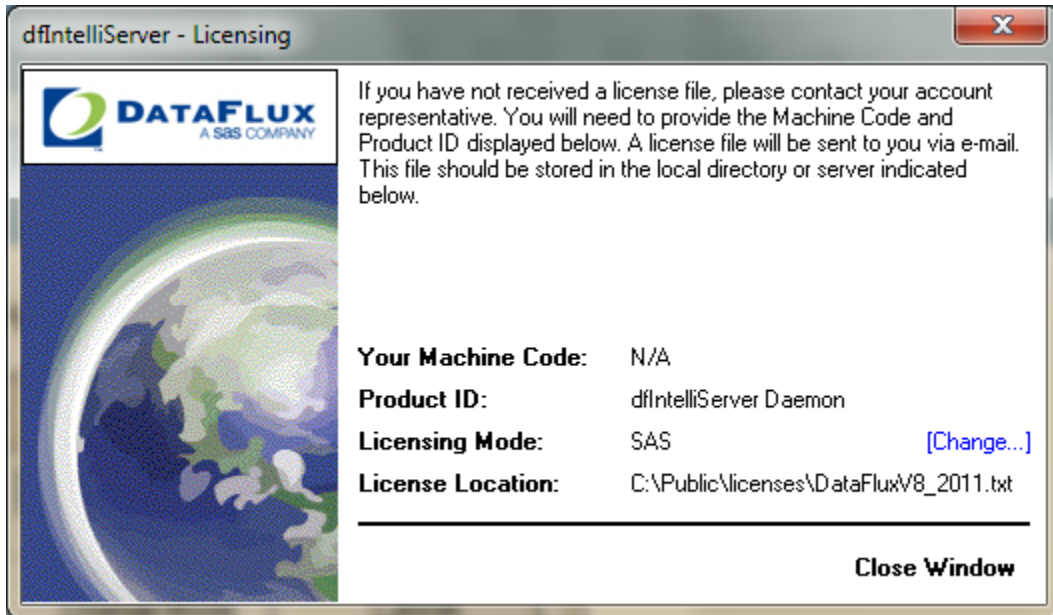


8. In the Licensing dialog, click the **Change** link and select **SAS**.

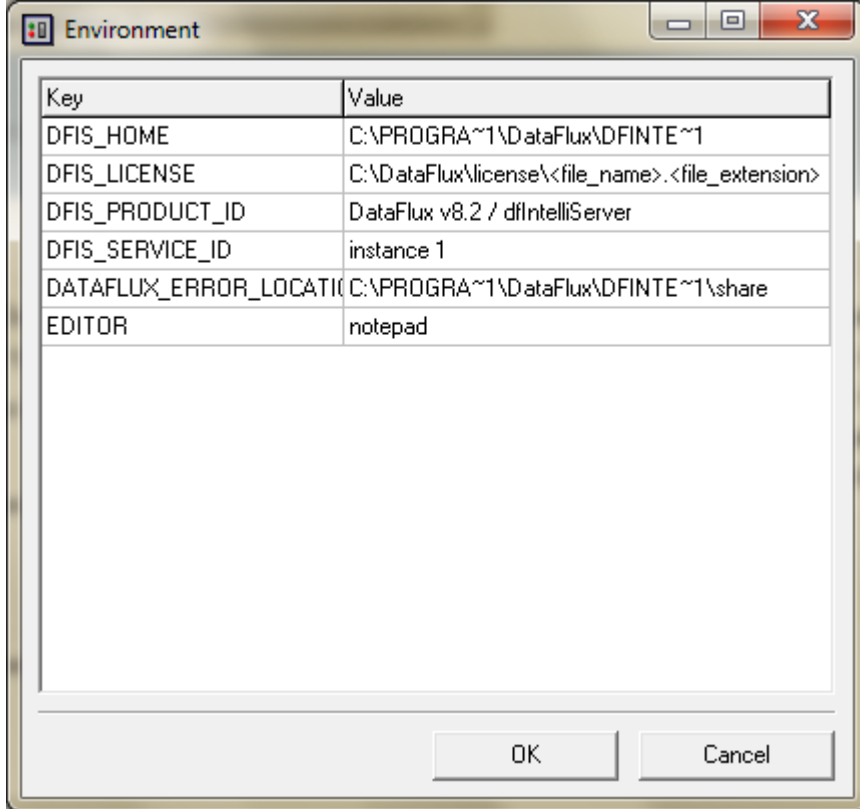


9. Select **Change Mode**.

10. Select **Close Window** to exit the Licensing dialog.



11. In the **Service Monitor** dialog, click the **Change your environment settings link**. Specify the location of the SAS SETINIT for DFIS_LICENSE.
NOTE: SAS license names may be different from version to version.



12. Click **OK**.
13. Restart the DataFlux dfIntelliServer.