

# User Installation Guide for SAS<sup>®</sup> 9.1.3 Foundation for Microsoft<sup>®</sup> Windows<sup>®</sup> for 64-Bit Itanium-based Systems



## Copyright Notice

The correct bibliographic citation for this manual is as follows: SAS Institute Inc., *User Installation Guide for SAS® 9.1.3 Foundation on Microsoft® Windows® for 64-Bit Itanium-based Systems*, Cary, NC: SAS Institute Inc., 2007.

### **User Installation Guide for SAS® 9.1.3 Foundation on Microsoft® Windows® for 64-Bit Itanium-based Systems**

Copyright © 2007 SAS Institute Inc., Cary, NC, USA.

All rights reserved. Printed in the United States of America. No part of this publication may be reproduced, stored in a retrieval system, or transmitted, by any form or by any means, electronic, mechanical, photocopying, or otherwise, without the prior written permission of the publisher, SAS Institute, Inc. Limited permission is granted to store the copyrighted material in your system and display it on terminals, print only the number of copies required for use by those persons responsible for installing and supporting the SAS programming and licensed programs for which this material has been provided, and to modify the material to meet specific installation requirements. The SAS Institute copyright notice must appear on all printed versions of this material or extracts thereof and on the display medium when the material is displayed. Permission is not granted to reproduce or distribute the material except as stated above.

U.S. Government Restricted Rights Notice. Use, duplication, or disclosure of the software by the government is subject to restrictions as set forth in FAR 52.227-19 Commercial Computer Software-Restricted Rights (June 1987).

SAS Institute Inc., SAS Campus Drive, Cary, North Carolina 27513.

SAS and all other SAS Institute Inc. product or service names are registered trademarks or trademarks of SAS Institute Inc. in the USA and other countries.

® indicates USA registration.

Other brand and product names are trademarks of their respective companies.

## Table of Contents

<b>About This Guide .....</b>	<b>ii</b>
<b>Where to Begin.....</b>	<b>1</b>
<b>Installing SAS 9.1.3 Foundation for Microsoft Windows .....</b>	<b>1</b>
Close all Programs Prior to Installation .....	1
Antivirus and/or Firewall Software .....	1
Using the SAS Log.....	1
<b>Two Starting Points for Installing SAS .....</b>	<b>1</b>
AutoPlay on the SAS Setup Disk .....	1
AutoPlay and the SAS Setup Wizard .....	2
The SAS Software Navigator .....	2
<b>Client and Personal Installations.....</b>	<b>3</b>
Client Installation .....	3
Personal Installation .....	3
<b>Documentation for Installing SAS 9.1.3.....</b>	<b>3</b>
<b>Updating Your SAS Installation .....</b>	<b>4</b>
<b>The SAS Setup Wizard for End Users .....</b>	<b>5</b>
<b>Starting the SAS Setup Wizard .....</b>	<b>5</b>
<b>SAS Setup Wizard Dialogs .....</b>	<b>5</b>
Sequence of Setup Windows .....	5
SAS Setup Wizard Dialogs & Directions.....	6
Welcome to the SAS Setup Wizard .....	6
Retrieve SAS Installation Data.....	6
SAS Installation Data .....	6
SAS Installation Data Not Found .....	6
Language Selections .....	7
Default Language.....	7
SAS Shared Files.....	7
Choose Destination Folder.....	7
Specify Data Files Folder .....	8
Specify Temporary Files Folder .....	8
Select Components.....	9
Start Copying Files.....	9
SAS Setup Complete .....	10
Dialogs Used More than Once in Setup .....	10
Setup Status .....	10
Exit Setup.....	10
Choose Folder .....	10
<b>Installing the SAS System Viewer .....</b>	<b>11</b>
<b>Starting the SAS System Viewer .....</b>	<b>11</b>
<b>Repair or Remove SAS Software.....</b>	<b>12</b>
<b>User Installation Glossary.....</b>	<b>13</b>

## **About This Guide**

Most people who install SAS 9.1.3 Foundation can be considered either administrators or end users. This User Installation Guide is intended for end users. The instructions on the following pages will help you install SAS 9.1.3 Foundation.

If you need to perform a setup or other system administration tasks, please refer to the *Administrator Guide for SAS 9.1.3 Foundation on Microsoft Windows for 64-Bit Itanium-based Systems*.

To find configuration information and instructions for customizing the installation of specific SAS components and products, please refer to *Post-Installation Guide for SAS 9.1.3 Foundation on Microsoft Windows for 64-Bit Itanium-based Systems*.

# Where to Begin

## *Installing SAS 9.1.3 Foundation for Microsoft Windows*

### **Close all Programs Prior to Installation**

Before you proceed with this installation, close all SAS programs including SAS services and processes that are running in the Task Manager (for example, `spawner.exe`, `objspawn.exe`, SAS Lev1 CS, SAS Lev1 MS, SAS Lev1 OB, etc). It is also recommended that you close your anti-virus software and your firewall software.

Remember that you must have Administrative rights to complete a SAS installation.

### **Antivirus and/or Firewall Software**

Some anti-virus and/or firewall configurations can prevent an application from installing successfully. If you are unable to close the anti-virus or firewall software, make sure that your configuration allows you to install software and to update the registry.

If your SAS installation fails and you have mandatory anti-virus or firewall software running, please check with your system administrator.

### **Using the SAS Log**

If you view the SAS log (as a part of the installation log or separate from the installation), please note that SAS 9.1.3 and SAS 9.1.3 Foundation are displayed in the log as SAS 9.1 TS1M2.

## *Two Starting Points for Installing SAS*

To install SAS 9.1.3 Foundation in its simplest form, you can run the installation from the **SAS Setup Disk**. This AutoPlay method is introduced below and described in more detail in “The SAS Setup Wizard for End Users” on page 5.

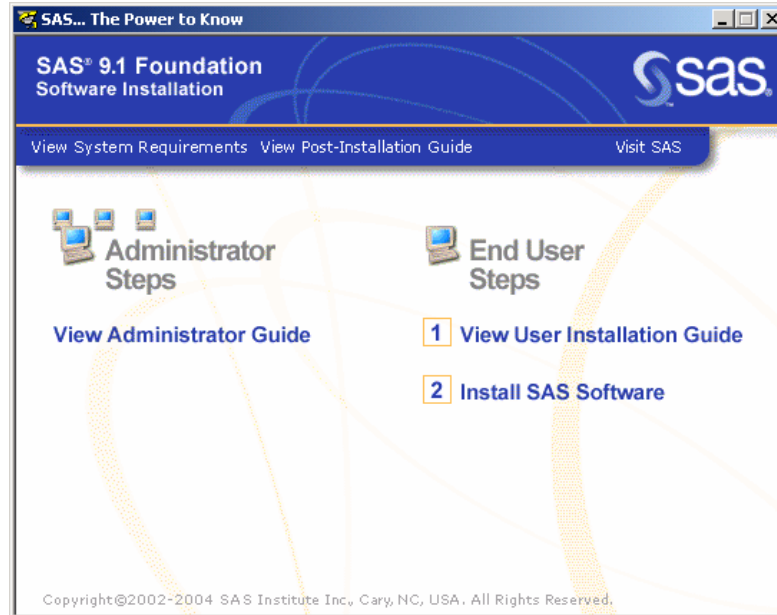
If your SAS 9.1.3 software installation is intended for multiple platforms, or if your software mix requires post-installation configuration, the SAS Software Navigator (SSN) would be your best choice. The SSN is designed for this type of deployment across a multiplatform and/or multi-machine environment. For more information, please see “The SAS Software Navigator” on page 2.

In a software update, SAS Setup ensures that newer files will be placed in the same locations as their predecessors. For the user, the result is a streamlined wizard sequence in which certain windows are skipped. In addition, when new software is installed, SAS Setup checks to see if updates are required. The Setup tool then applies any needed software as part of the installation.

### **AutoPlay on the SAS Setup Disk**

The SAS AutoPlay, which is launched when you insert the **SAS Setup Disk**, is the simplest method for installing SAS 9.1.3 Foundation.

The AutoPlay menu displays two links that you need to begin your installation. They are located under the heading End User Steps: **View User Installation Guide** and **Install SAS Software**.



## AutoPlay and the SAS Setup Wizard

To begin your installation of SAS 9.1.3 Foundation, click on **Install SAS Software** under End User Steps.

SAS Setup will ask for your SAS Installation Data (SID) file, which is sent to your site's SAS Installation Representative by e-mail. The SAS Installation Key and Order number can be found in the SAS Installation Kit, on the SAS Order Information sheet.

After determining where your SAS Installation Data file can be found, you can perform your installation of SAS 9.1.3 Foundation:

1. From the **SAS Setup Disk** AutoPlay menu, under End User Steps, click on **Install SAS Software**.
2. SAS Setup begins with a Welcome window. Click **Next**.
3. Retrieve your SAS Installation Data file from a file location.

Follow the steps in the SAS Setup dialogs to complete your installation of SAS 9.1.3 Foundation. For more information, please see "The SAS Setup Wizard for End Users" on page 5.

## The SAS Software Navigator

The SAS Software Navigator is designed for enterprise deployment across a multiplatform and/or multi-machine environment. The SAS Software Navigator provides access to online installation and configuration documentation, installation qualification tests, the Install Center, and SAS Technical Support.

**Note:** *If you use the SAS Software Navigator to install any of your software on a Microsoft Windows for 64-Bit Itanium-based Systems machine, you **must** deploy that software from a SAS Software Depot. Refer to the User's Guide for SAS Software Navigator, specifically Chapter 2, "Creating a SAS Software Depot," for more information.*

The SAS Software Navigator was written in Java, to take advantage of the platform independence offered by that programming language. More information is available on the **SAS Software Navigator** Disk, in the media container(s) inside your installation kit.

## Client and Personal Installations

SAS 9.1.3 Foundation can be installed in two different scenarios, Client Installation and Personal Installation.

### Client Installation

A Client installation uses the SAS Installation Wizard, SAS Setup, to install the software you need to run SAS in association with shared files on a network server.

Before a client installation can be performed, a System Administrator creates a server for clients, as described in the *Administrator Guide for SAS 9.1.3 Foundation on Microsoft Windows for 64-Bit Itanium-based Systems*. This method allows a majority of the files used by SAS to be stored in a central location and shared by multiple clients.

### Personal Installation

A Personal Installation uses the SAS Installation Wizard, SAS Setup, to install all the software you need to run SAS on your PC. In general, users who complete a Personal Installation of the SAS System are planning to run SAS without a server installation of SAS software in the network.

If you are installing from CDs, you are performing a Personal Installation. A Personal Installation can also be performed by using the SAS Setup Wizard from a network location created by your System Administrator.

## Documentation for Installing SAS 9.1.3

In SAS 9.1.3 Foundation, installation documentation can be viewed by using a Web browser. Documents are in PDF format and can be accessed from either of the following locations:

- the **Documentation for Installing and Configuring SAS** CD, found inside the lid of your installation kit. (To begin, insert the media into your CD-ROM drive and open `\documentation\eng\index.html`.)
- the Install Center section of our Web site, <http://support.sas.com/documentation/installcenter/913/kit/index.html>

You can always find the most recent version of the installation documentation on the Install Center site.

### Accessing the Documentation

The materials are divided into three documents:

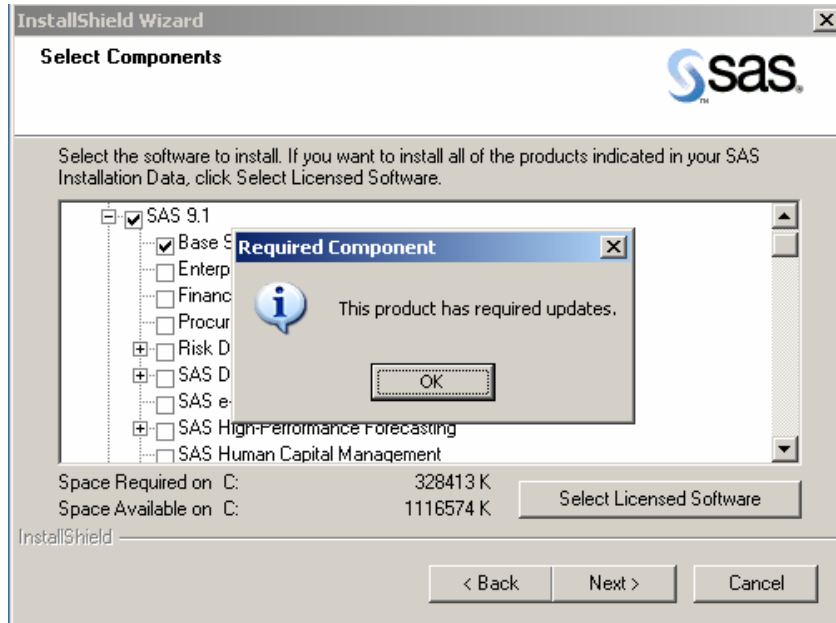
- The *User Installation Guide* is accessible from the SAS Software Navigator by selecting the View User Installation Guide option.
- The *System Requirements* document can be reviewed before or after you run the System Requirements Wizard. The document can be accessed from the SAS Software Navigator by selecting the View System Requirements option.
- The *Post-Installation Guide* is intended for anyone who needs to tune the behavior of specific SAS products or solutions after installation. This document is accessible from the SAS Software Navigator by selecting the View Post-Installation Guide option.

To see the installation kit materials and other sources of installation-related information, visit the Install Center Web site.

## Updating Your SAS Installation

If you have installed SAS 9.1 or SAS 9.1.2, there are some options to consider as you plan for your installation of SAS 9.1.3.

In the case of a Personal installation, there can be only one SAS 9.1 release (SAS 9.1, SAS 9.1.2, or SAS 9.1.3) installed per PC. It is not possible to maintain your current SAS software on the same computer with your new SAS software.



When new software is installed, SAS Setup recognizes if required updates are needed. The Select Components window in SAS Setup displays a list of all the products that are licensed for your installation. If any of these products require an update, their respective names cannot be deselected.

In addition, certain windows in SAS Setup are skipped during an update, since Setup expects that an update will use the established locations for data and temporary files.



## The SAS Setup Wizard for End Users

This section describes the steps required to install and run SAS. Users respond to the dialogs as each window is presented.

Most of the dialogs described below offer directions printed in bold italicized text. The lines that begin this way represent the quickest setup method. Dialogs that are shown indented below may not be a part of your installation.

All Setup dialogs are listed below according to the order in which SAS Setup presents them, with the exception of the dialogs that can appear more than once. These are grouped on page 10.

### Starting the SAS Setup Wizard

To start SAS Setup, complete the following three steps:

1. Insert the CD-ROM labeled **SAS Setup Disk** into the source drive. SAS Setup should appear. If this does not happen, or if you are running from a network location provided by your administrator, select the **Run** menu option from the Windows Start menu and type:

```
<source_drive>:\SETUP
```

In this context, *<source\_drive>* is the drive containing the SAS System installation media.

2. Select **SAS 9.1 Foundation** from the list of options.
3. Select **Install SAS 9.1 Foundation**.

### SAS Setup Wizard Dialogs

#### Sequence of Setup Windows

Welcome to the SAS Setup Wizard  
Retrieve SAS Installation Data  
    SAS Installation Data  
    SAS Installation Data Not Found  
    Language Selections  
    Default Language  
    SAS Shared Files  
Choose Destination Folder  
Specify Data Files Folder  
Specify Temporary Files Folder  
Select Components  
Start Copying Files  
SAS Setup Complete

## SAS Setup Wizard Dialogs & Directions

### Welcome to the SAS Setup Wizard



**Click Next.**

Or, click **Cancel** to exit the SAS Setup Wizard.

### Retrieve SAS Installation Data

**Select Existing**, unless you plan to specify a different file, or expect to provide the SAS Installation Data later.

Most users can use the network location provided by an administrator. However, if your SAS Installation Data is in a different location, select **File** to enter that location on the SAS Installation Data File dialog. More information on that window can be found below.

**Click Next.**

Or, click **Back** to view the previous screen, or click **Cancel** to exit Setup.

### SAS Installation Data

If Setup displays this window, type the full path for your SAS Installation Data file, or click **Browse** to locate the directory.

If the SAS Installation Data file cannot be found, you will receive an error message.

**Click Next.**

Or, click **Back** to view the Retrieve SAS Installation Data window, or click **Cancel** to exit Setup.

### SAS Installation Data Not Found

If Setup displays this window, **read** the SAS Installation Data Not Found dialog.

**Click Okay.**

## Language Selections

If Setup displays this window, **click Select All** to choose all the languages that are available to you, or select **Clear All** to deselect the chosen listings.

**Click Next.**

Or, click **Back** to view the previous window, or click **Cancel** to exit Setup.

## Default Language

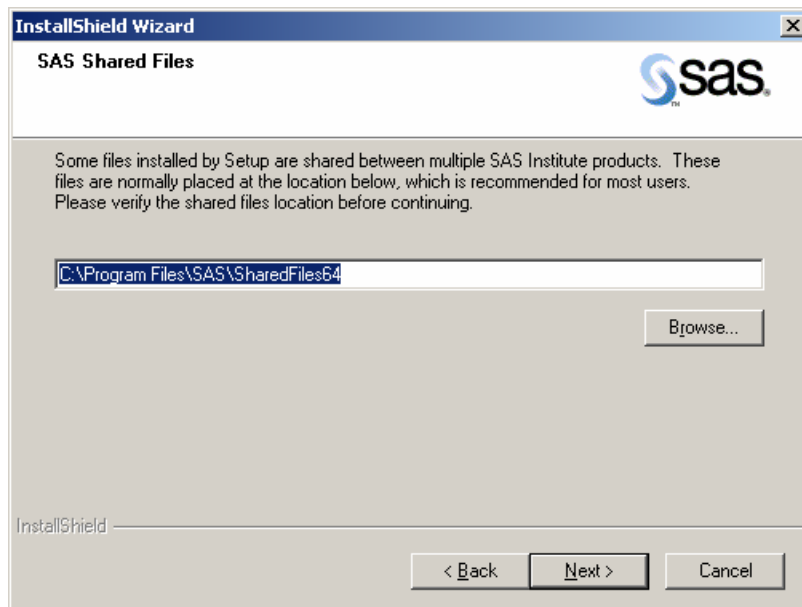
If Setup displayed the Language Selections window, you will also see this window, which displays all the languages chosen on the Language Selections window.

**Click** the box next to the name of the language that you want to select for your default language.

**Click Next.**

Or, click **Back** to view the Language Selections window, or click **Cancel** to exit Setup.

## SAS Shared Files



If Setup displays this window, your Share Files area needs to be chosen. Some files that are installed by Setup are shared between multiple SAS products and/or multiple SAS releases. Most users can use the location listed on the screen.

If you want your shared files in another folder, **click Browse.**

If you have not installed SAS before, or if you have uninstalled SAS and cleaned your Windows registry, you will be prompted for the location of these files.

**Click Next.**

Or, click **Back** to view the previous window, or click **Cancel** to exit Setup.

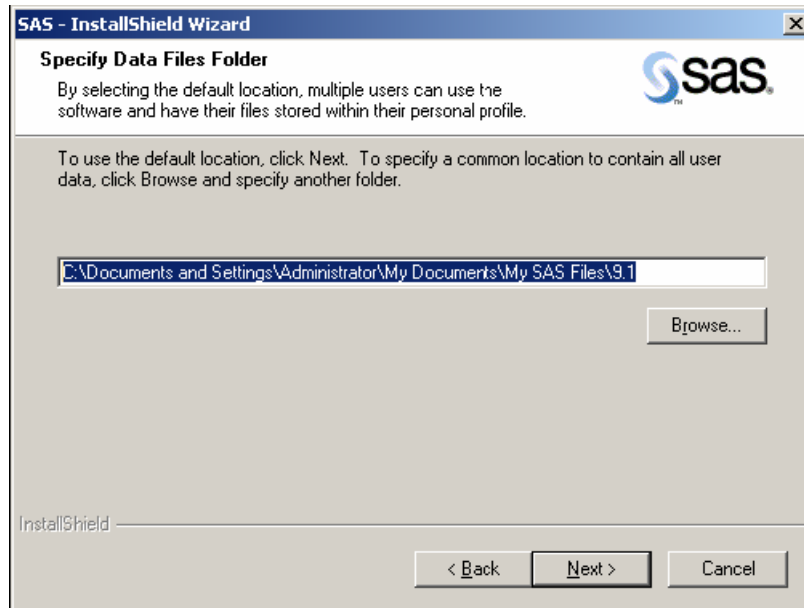
## Choose Destination Folder

**Click Next** to install SAS in the destination folder listed on the screen.

Or, click **Browse** to choose a different folder.

Click **Back** to view the previous screen, or click **Cancel** to exit Setup.

## Specify Data Files Folder

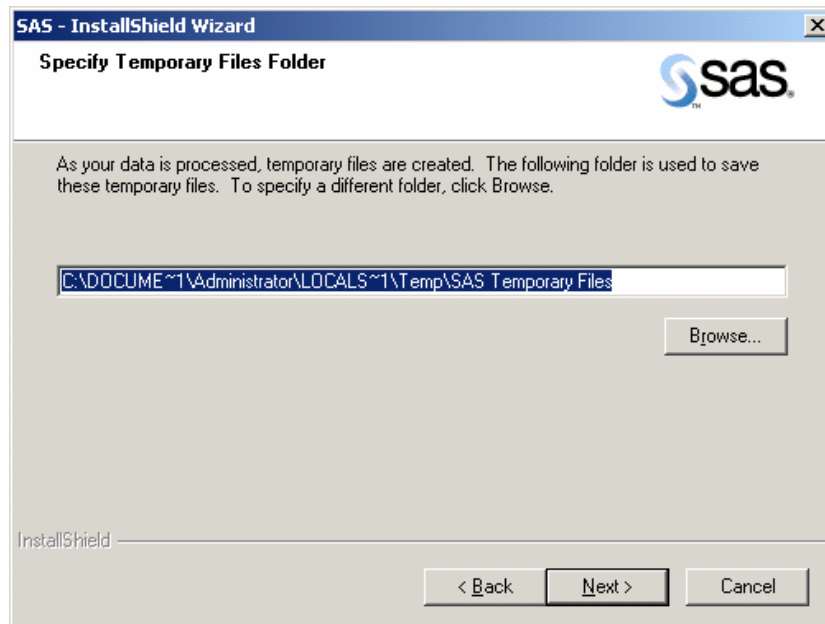


By default, the Windows user profile directory is created in the location shown in this window. If you select this default choice for the Windows directory, multiple users can use SAS on the same computer.

Personal data folders are created automatically.

**Click Next** to accept the default directory, or click **Browse** to specify a different directory. Click **Back** to view the Choose Destination Location window, or click **Cancel** to exit Setup.

## Specify Temporary Files Folder



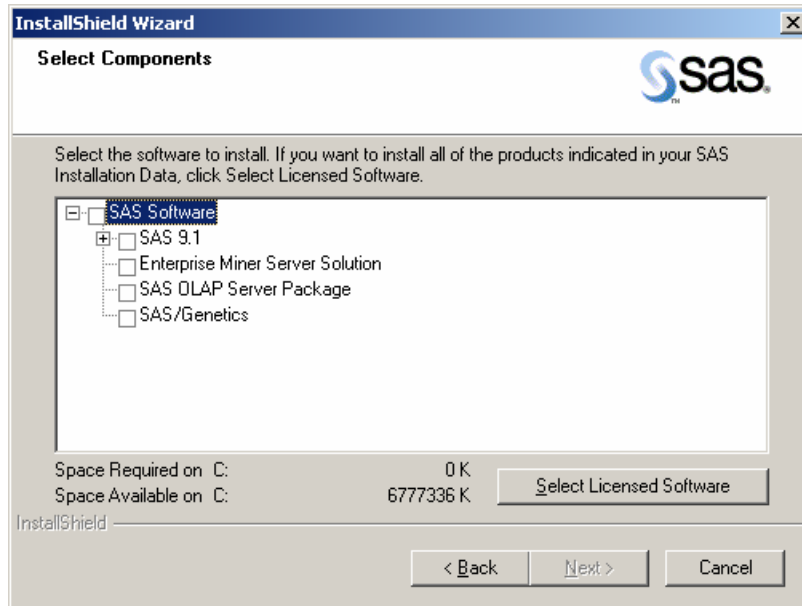
As SAS processes your data, temporary files are created.

**Click Next** to select the folder listed in the window as the location for these temporary files.

Or, click **Browse** to specify a different folder.

Click **Back** to view the Specify Data Files Folder window, or click **Cancel** to exit Setup.

## Select Components



This window displays the components that have been selected for your installation. To make changes to this list, select the components that you want to install, and deselect the components that you do not want to install.

Click **Select Licensed Software** as a quick way to select only the components that are listed in your software license.

**Click Next.**

Or, click **Back** to view the Specify Temporary Files Folder window, or click **Cancel** to exit Setup.

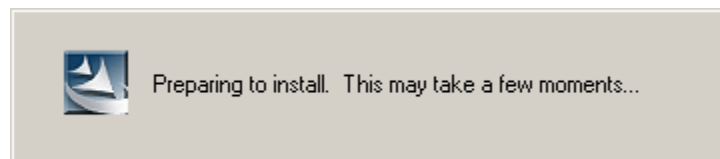
## Start Copying Files

At this point in the installation, Setup has enough information to start copying the program files.

**Click Next** if you are satisfied with the settings.

Or, if you want to review or change any settings, click **Back** to return to the Select Components window.

Click **Cancel** to exit Setup.



## **SAS Setup Complete**

There are two alternatives for the final dialog in the sequence:

Your SAS software has been installed. If you want to launch the SAS System now, click that checkbox. If you want to view the Post-Installation Guide now, click that checkbox.

**Click Finish.**

Setup has copied all the required files to your computer. However, some files could not be updated because they are in use. These will be updated automatically when you reboot your computer.

**Click** on one of the two radio buttons:

- Yes, I want to restart my computer now.
- No, I will restart my computer later.

If you choose to reboot, close all open applications and remove any floppy disks from the disk drives. Verify that all virus-scanning software has been disabled after the computer restarts.

**Click Finish.**

## **Dialogs Used More than Once in Setup**

The following three dialogs appear as needed during SAS Setup Wizard procedures:

### **Setup Status**

This dialog is displayed while Setup performs the requested operations. No action is required. If you click **Cancel**, you will exit Setup, and the program will not be installed.

### **Exit Setup**

Setup can be completed later, but if you quit Setup now, the program will not be installed. Click **No** to resume Setup, or click **Yes** to quit.

### **Choose Folder**

This dialog is used to browse for an available folder. Navigate through the nested folders until you find the correct one for your installation.

**Click OK** to select the folder.

Or, click **Cancel** to return to the previous window.

## Installing the SAS System Viewer

There are two ways to install SAS System Viewer 9.1. As described below, the SAS System Viewer is available to users during a CD installation from the **Client-Side Components Volume 1** CD, and after an Administrator lays down the image on the server.

- To install the SAS System Viewer from the **Client-Side Components Volume 1** CD, place the CD in the CD-ROM drive so the SAS Software Navigator can autoplay. From the SSN menu, select **SAS System Viewer**, and then click **install**.
- To install the SAS System Viewer from a network image provided by your Administrator, browse to the directory `client1cd\systemviewer` and run `SASView91.exe`.

## Starting the SAS System Viewer

There are two ways to open the SAS System Viewer after it is installed:

- Click on **Start > All Programs > SAS > SAS System Viewer 9.1**
- From Windows Explorer, navigate to the directory `C:\Program Files (x86)\SAS\SAS System Viewer\9.1` and run `sv.exe`.

## **Repair or Remove SAS Software**

For an end user, the process of removing or updating SAS software works just as it does for any other Windows software. Click on **My Computer > Control Panel > Add/Remove Programs**.

Select **SAS 9.1.3** from the list to perform the following tasks:

- Remove SAS from your computer
- Repair your SAS installation
- Add products to your SAS System installation
- Remove products from your SAS System installation



## User Installation Glossary

This glossary defines terms that are used in the installation documentation and terms that you may encounter during installation of SAS 9.1.3 Foundation.

Client Installation	A Client Installation uses the SAS Installation Wizard, SAS Setup, to install the software you need to run SAS in association with shared files on a network server. SAS System components are not installed on a local disk; only a few essential files are installed locally.
Personal Installation	A Personal Installation uses the SAS Installation Wizard, SAS Setup, to install all the software you need to run SAS on your PC. In general, users who complete a Personal Installation of the SAS System are planning to run SAS without a server installation of SAS software in the network.
SAS 9.1.3 Foundation	SAS 9.1.3 Foundation is the combination of Base SAS and the server-side products that you have ordered which are installed at the same time as Base SAS 9.1.3.
SAS Installation Data	SAS Installation Data is required to install SAS Software. It includes your company's SETINIT and installation process customization parameters.
SAS Installation Representative	The SAS Installation Representative is a person appointed at your site who serves as the liaison between the site and SAS Institute. This person is the contact for all SAS software matters.
SAS Setup	SAS Setup (or "Setup") is a program that guides you in the installation of your SAS software and the configuration of your SAS operating environment.
SETINIT	The SETINIT is a file of information about the software in your license. The SAS System is authorized on an annual basis. In order to run each software product, you must obtain a product authorization code from SAS Institute. This authorization information resides in the SETINIT.SSS file. When you install the SAS System, the SETINIT information is used to initialize the software for the current authorization period.



### **[support.sas.com](https://support.sas.com)**

SAS is the world leader in providing software and services that enable customers to transform data from all areas of their business into intelligence. SAS solutions help organizations make better, more informed decisions and maximize customer, supplier, and organizational relationships. For more than 30 years, SAS has been giving customers around the world The Power to Know®. Visit us at [www.sas.com](https://www.sas.com).