

SAS® OnDemand for Academics: Enterprise Miner™

Uploading Course Data

Overview

If you have already registered for SAS® OnDemand for Academics and are teaching a course using SAS® Enterprise Miner™, then you can upload data to a common directory within SAS® Studio. Anyone registered for your course can then access this data with the correct LIBNAME statement.

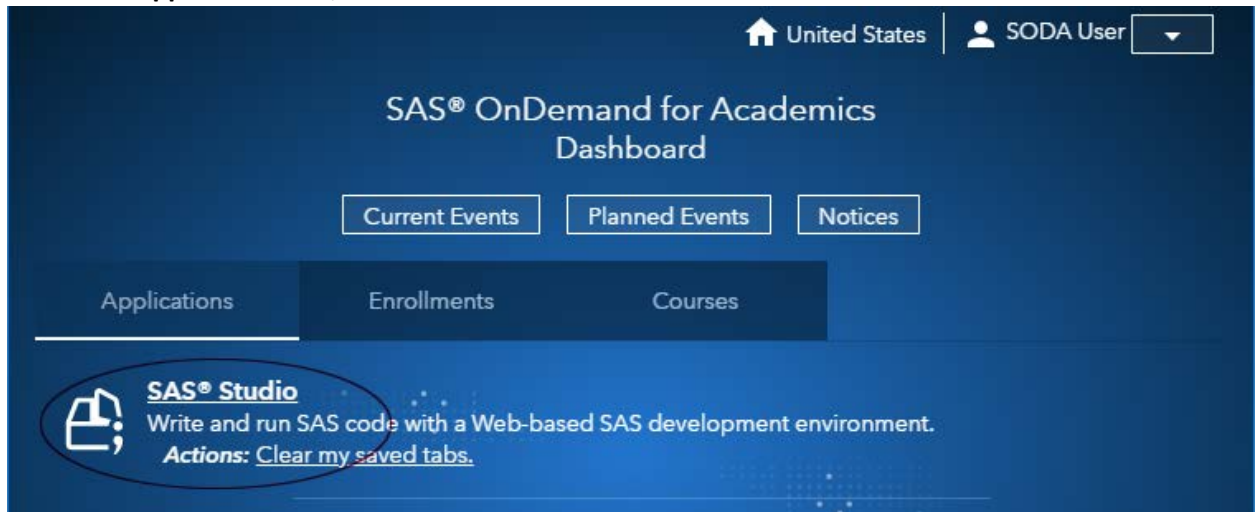
The following steps explain how to upload course data. If you have not already registered as a user or registered a course, review the other [Step-by-Step Reference Guides](#).


Uploading Course Data

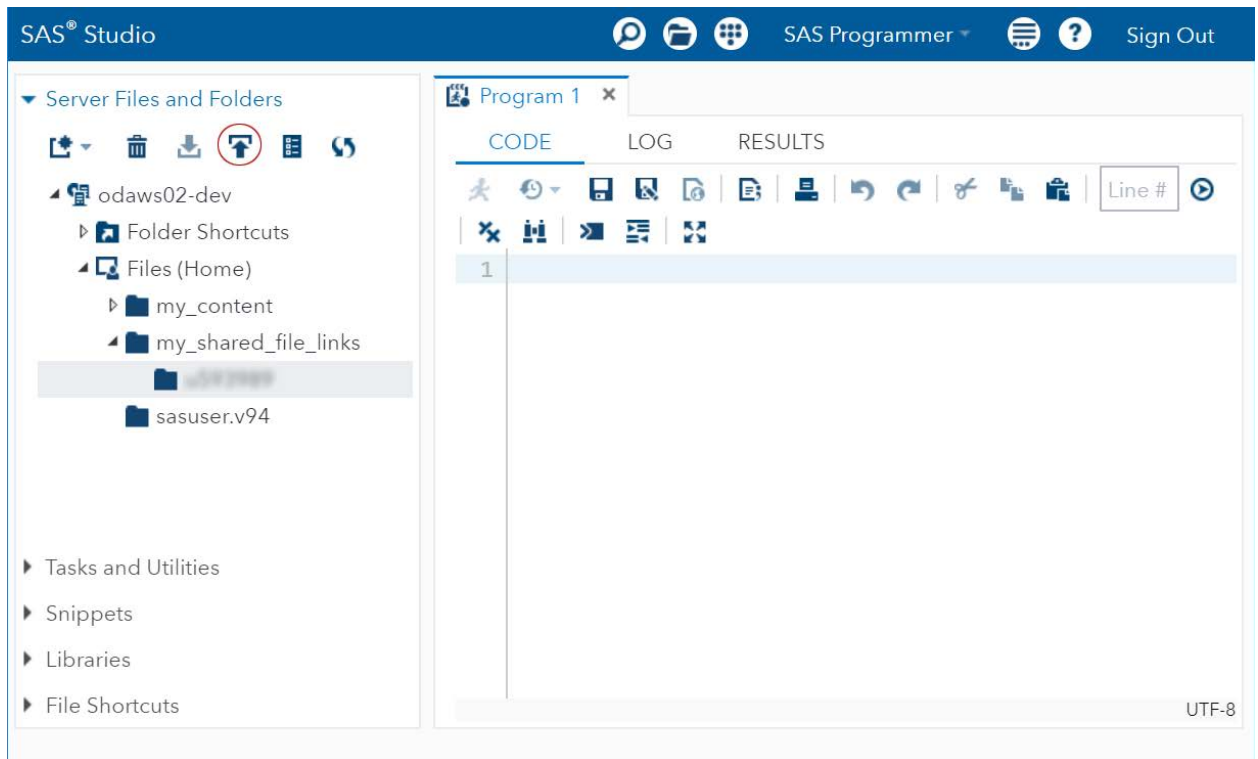
1. [Log on to SAS OnDemand for Academics](#).

Your SAS OnDemand for Academics Dashboard is displayed.

2. Under the **Applications** tab, click **SAS® Studio**.

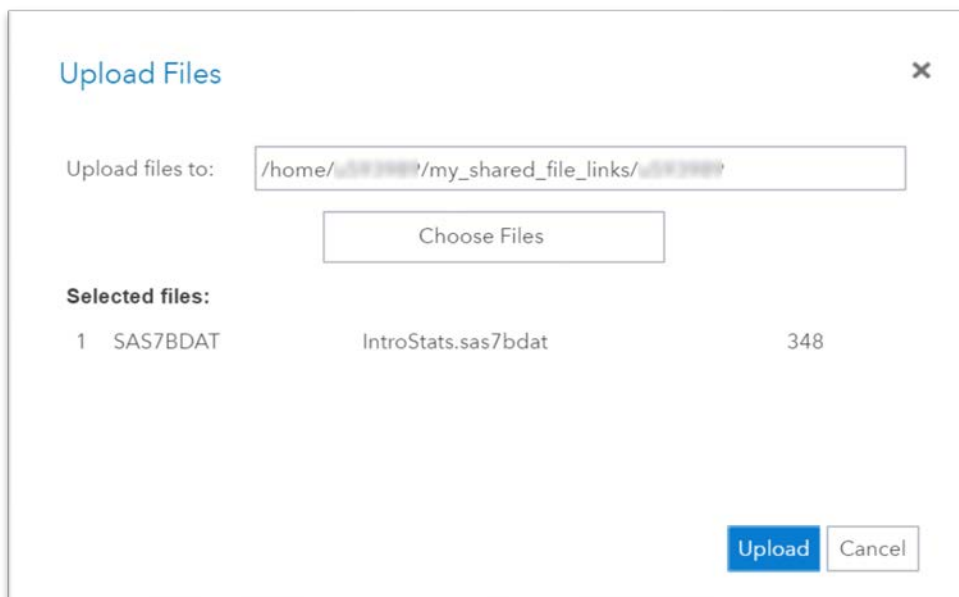


3. In SAS Studio, upload SAS data sets to your **my_shared_file_links** folder. Expand **Files (Home)**. Expand your **my_shared_file_links** folder. Select the folder for your user ID. Click .

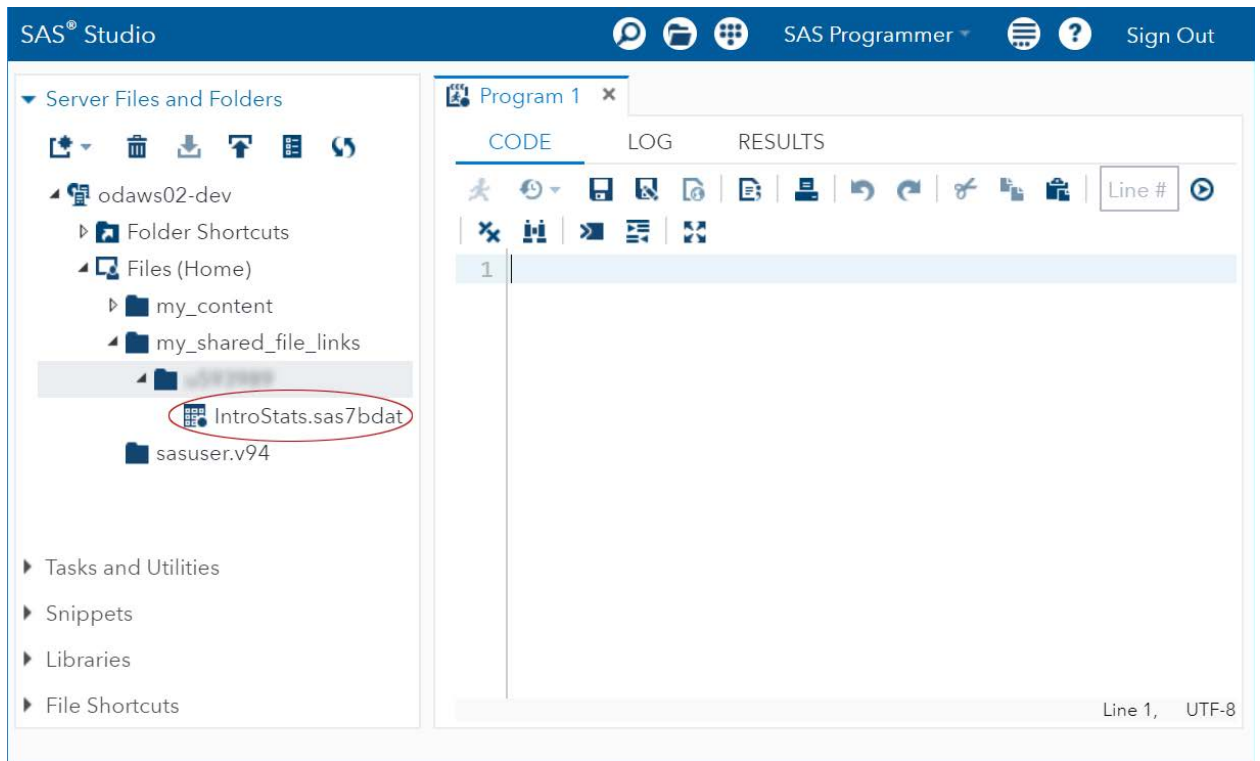


The Upload Files dialog box is displayed.

4. Select the file to upload in the Upload Files dialog box. Click **Upload**.



After uploading, you see your course data set within your **my_shared_file_links** folder.



- Return to SAS OnDemand for Academics. Select the **Courses** tab. Locate the **Course Data Directory** path that you will use to create your LIBNAME statement. Students use this LIBNAME statement within SAS Enterprise Miner to view your course's data sets.

The screenshot shows the SAS OnDemand for Academics Dashboard. At the top, it says "United States" and "SODA User". The main heading is "SAS® OnDemand for Academics Dashboard". Below this are three buttons: "Current Events", "Planned Events", and "Notices". There are three tabs: "Applications", "Enrollments", and "Courses" (which is selected). Below the tabs is a table with columns: "Name", "Description", "Institution", and "+ create a new course". The table contains one row for "Introduction to Statistics" at "SAS Institute". Below the table is a section titled "Course Data Directory" with a paragraph explaining its use and a circled path: `~/my_shared_file_links/`. At the bottom, there are links for "Contact Us", "Status", "License", "Terms of Use & Legal Information", "Privacy Statement", and "www.sas.com", along with a copyright notice for 2020 SAS Institute Inc.

For example, a **Course data directory** value of `/my_shared_file_links/UUUUUUUU` equates to the following LIBNAME statement:

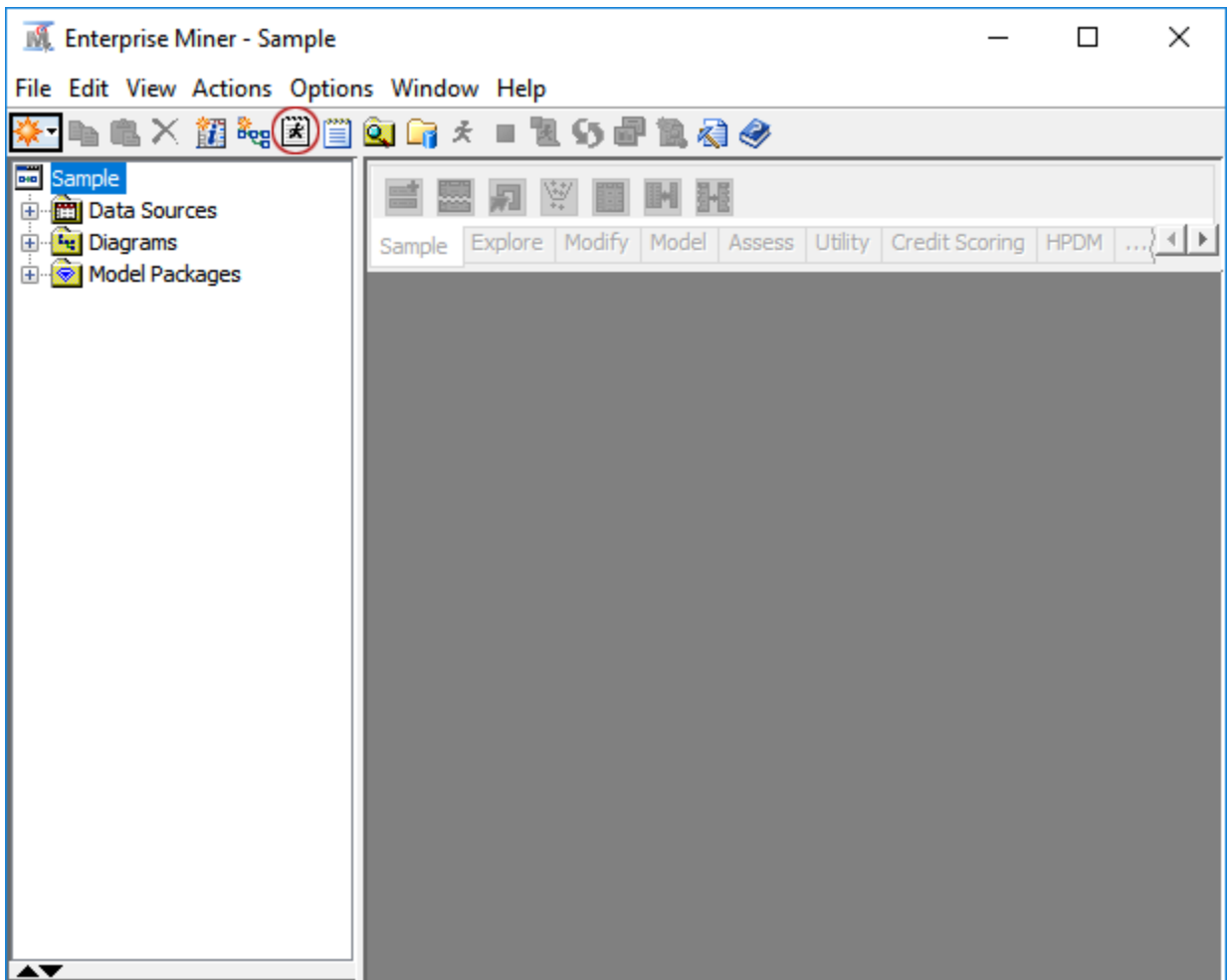
```
libname mydata "/my_shared_file_links/UUUUUUUU"
access=readonly;


run;
```

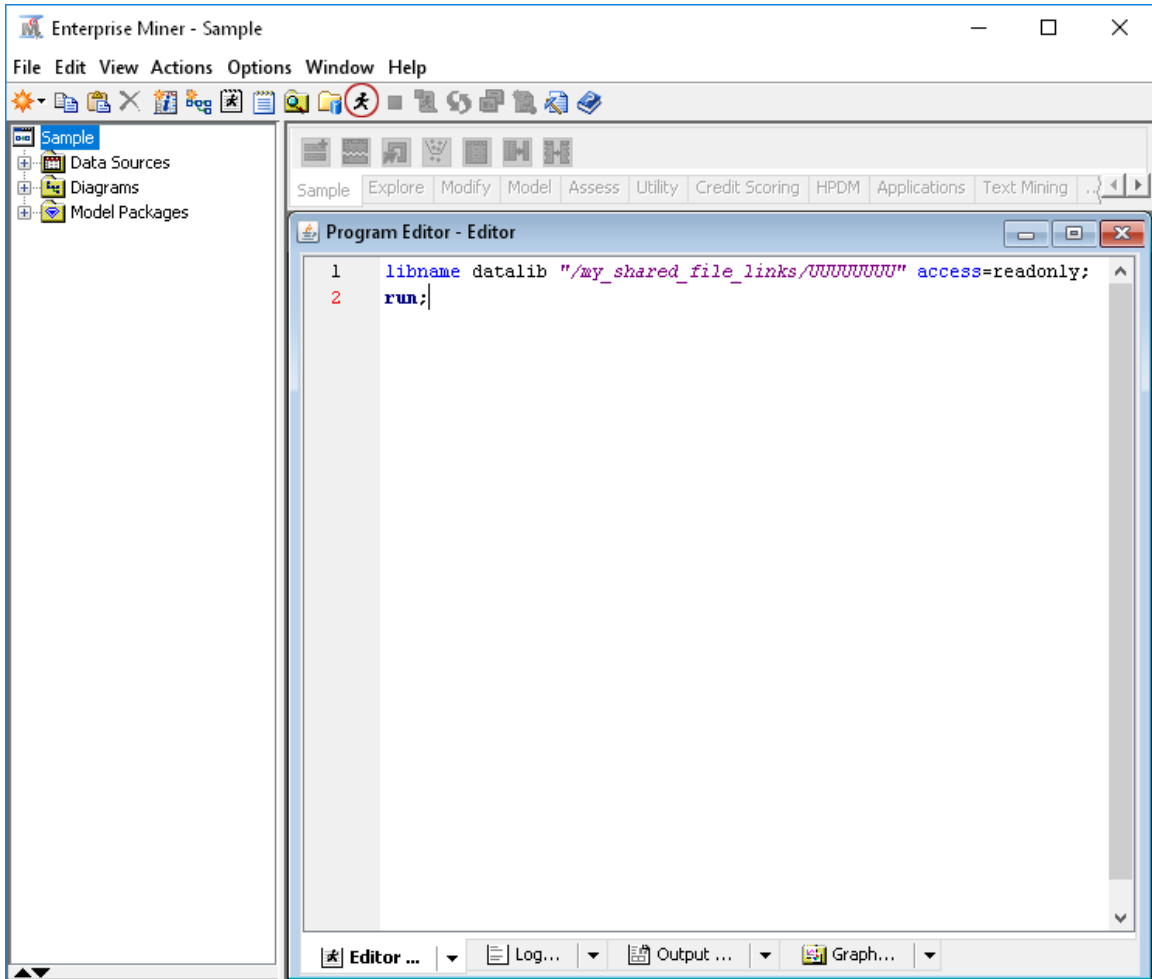
Note: The “access=readonly” option restricts students from altering your **my_shared_file_link** folder.


- Launch SAS Enterprise Miner and start a new project. Test to see whether the LIBNAME statement works.

7. At the top of the application click  to bring up your editor window.

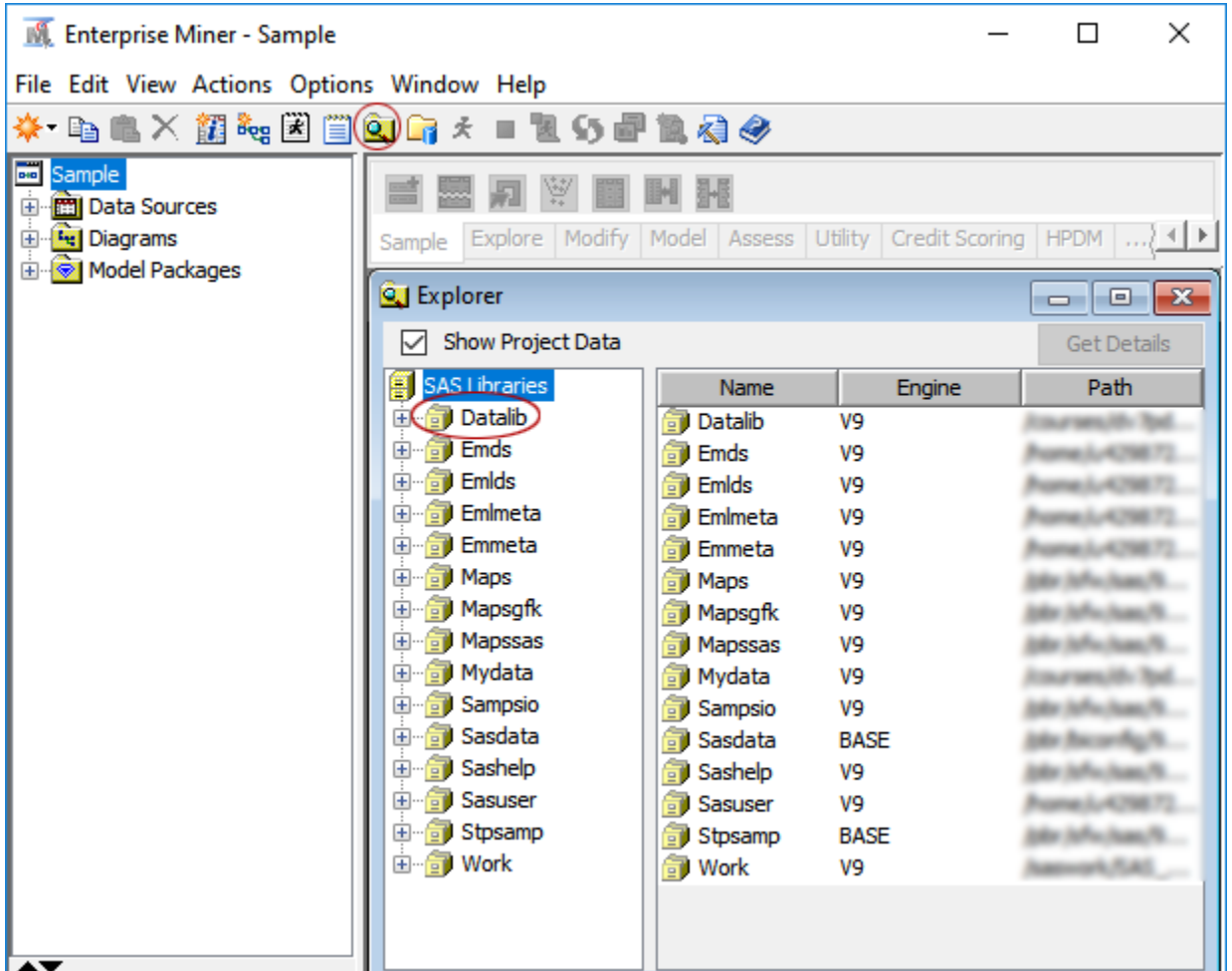


- In the editor window, enter the LIBNAME statement for your course. Click  to run your program.



9. The library that contains all of the data sets for the course should be created. Click  to bring up your list of libraries.

You see that a library named **Datalib** has been created and contains the sample data set that you uploaded.



Share this document with your students so that they access any course data sets that you plan to use.