

SAS® OnDemand for Academics: Enterprise Miner™ Uploading Course Data

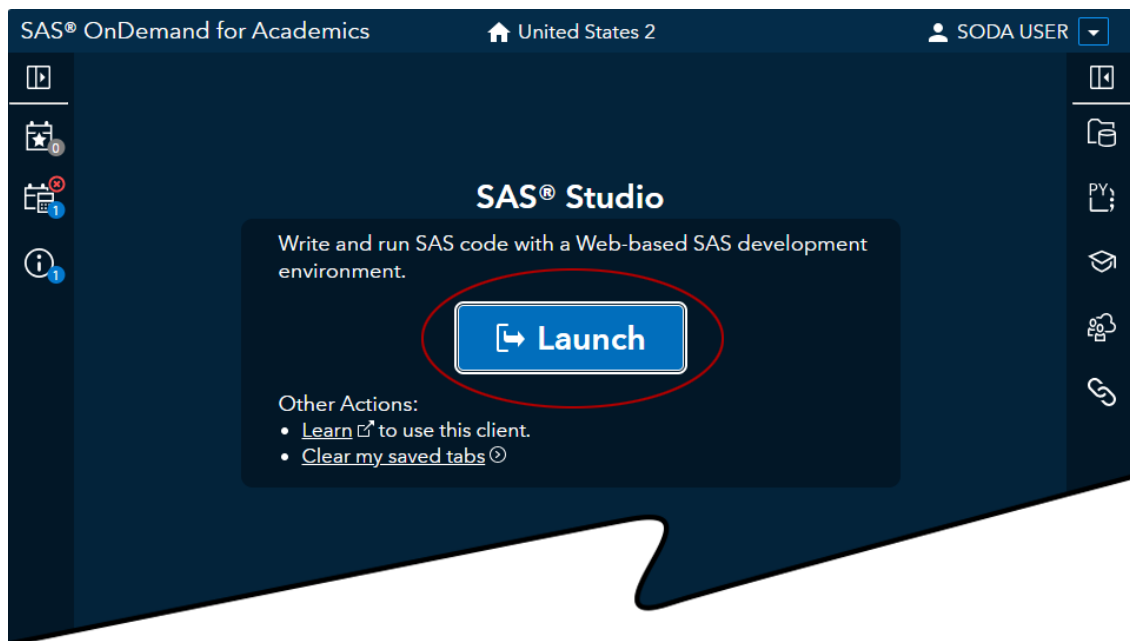
Overview


If you have already registered for SAS® OnDemand for Academics and are teaching a course using SAS® Enterprise Miner™, then you can upload data to a common directory within SAS® Studio. Anyone registered for your course can then access this data with the correct LIBNAME statement.

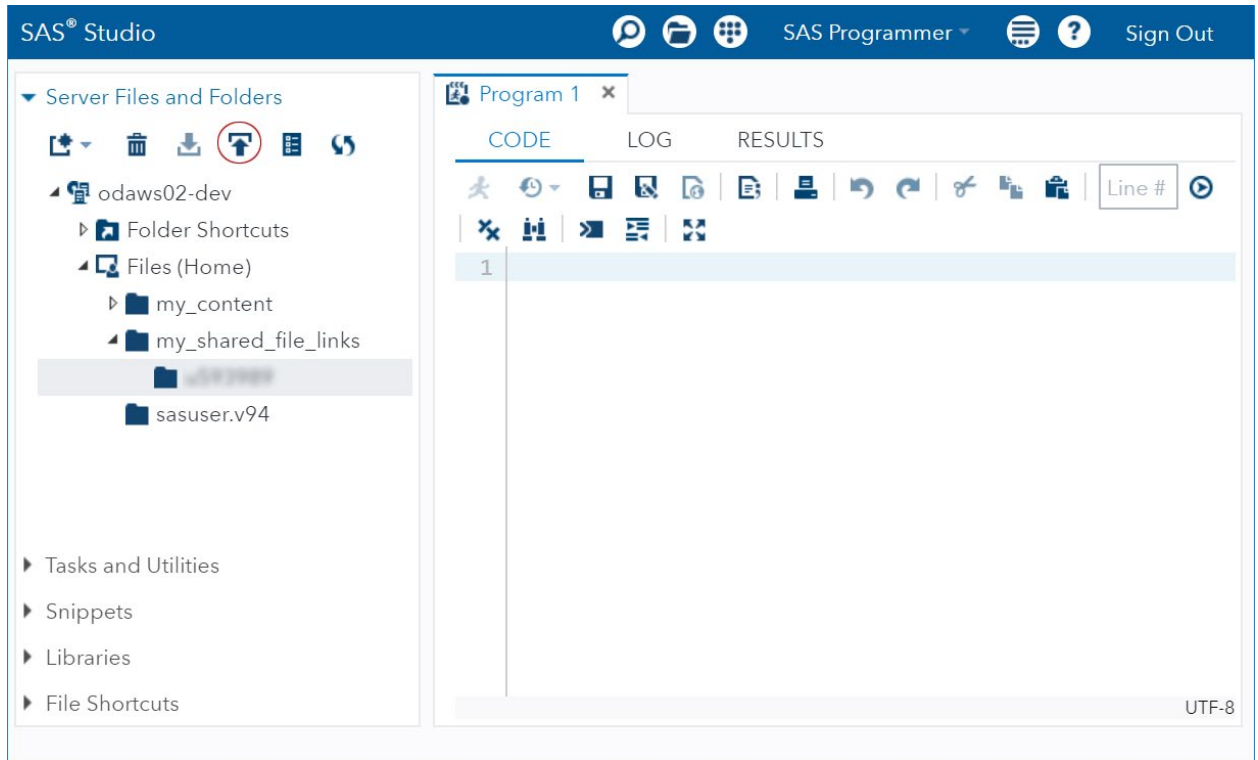
The following steps explain how to upload course data. If you have not already registered as a user or registered a course, review the other [Step-by-Step Reference Guides](#).

Uploading Course Data

1. [Log on to SAS OnDemand for Academics](#).
2. Click **Launch** to start SAS® Studio.

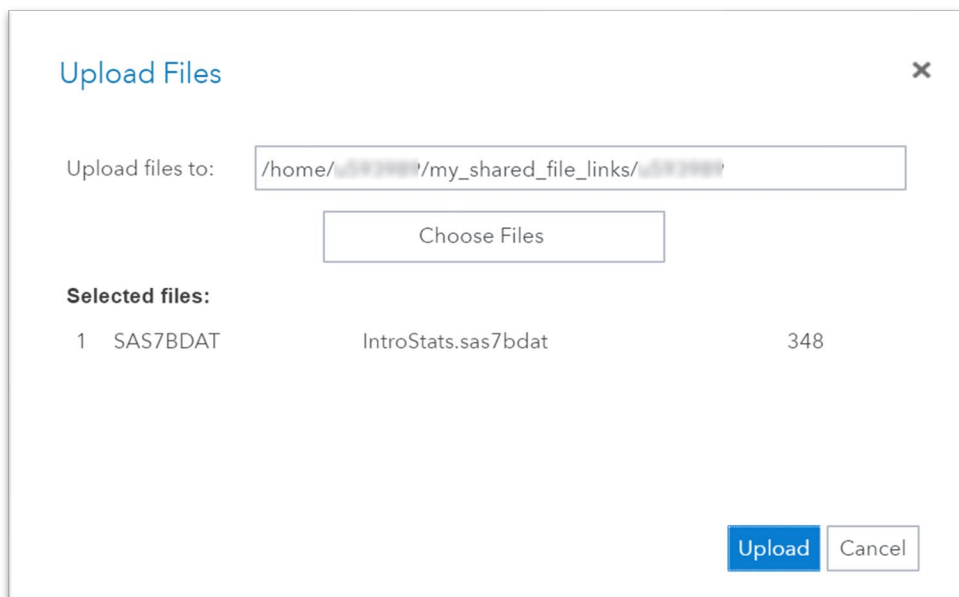


3. In SAS Studio, upload SAS data sets to your `my_shared_file_links` folder. Expand **Files (Home)**. Expand your `my_shared_file_links` folder. Select the folder for your user ID. Click .

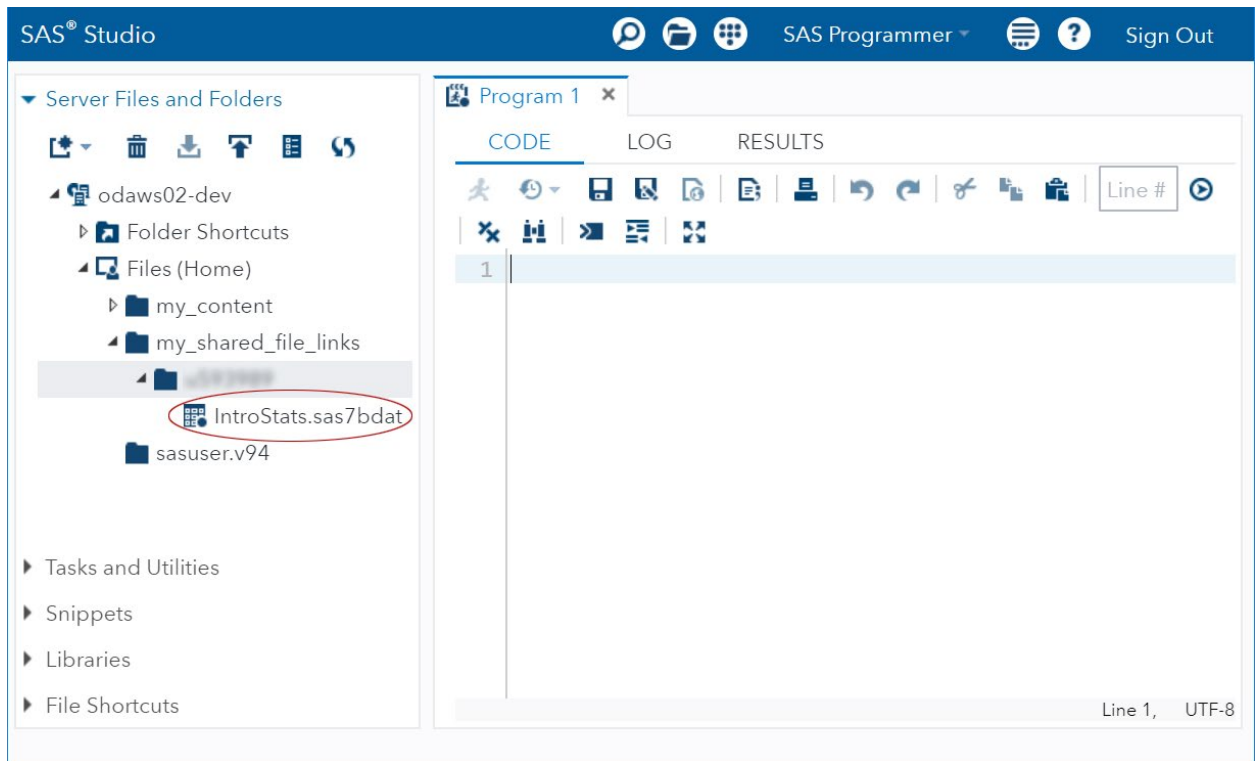


The Upload Files window is displayed.

4. Select the file to upload in the Upload Files window. Click **Upload**.



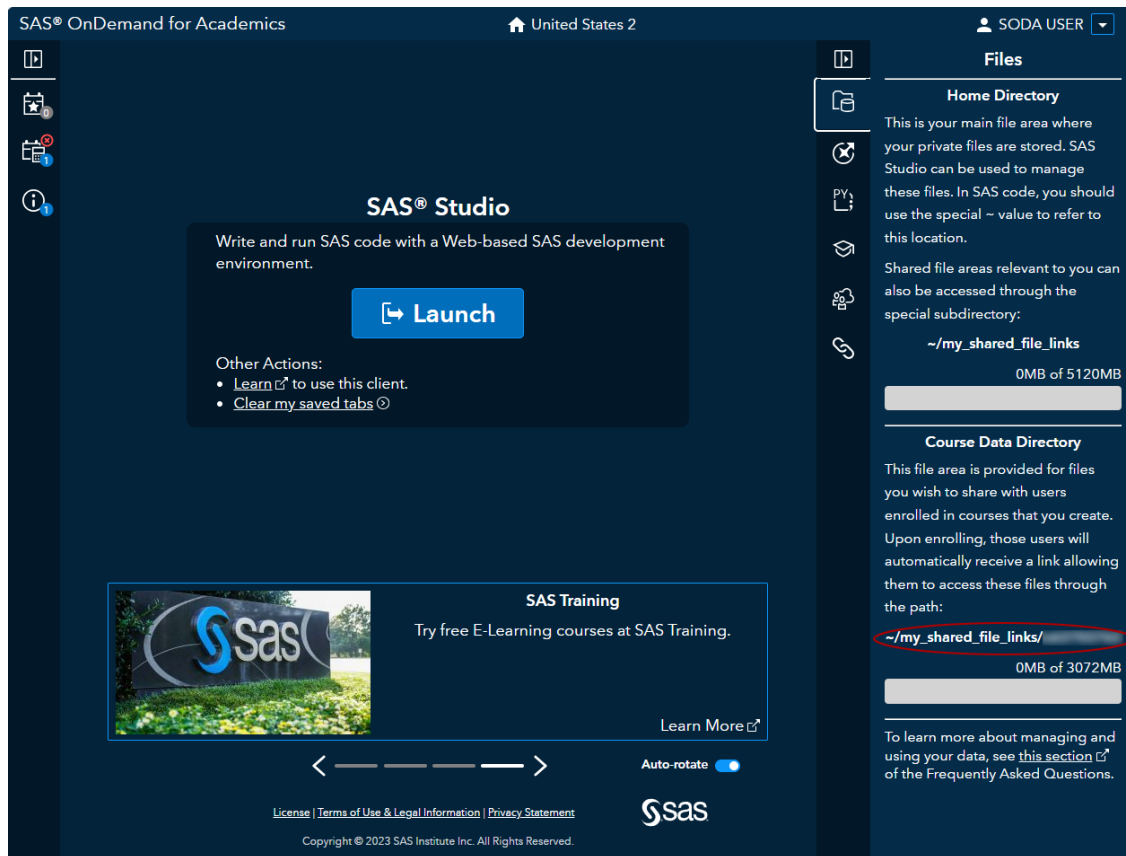
After uploading, you see your course data set within your **my_shared_file_links** folder.



5. Return to SAS OnDemand for Academics. Select the **Files** tab. Click



6. Locate the **Course Data Directory** path that you will use to create your LIBNAME statement. Students use this LIBNAME statement within SAS Enterprise Miner to view your course's data sets.



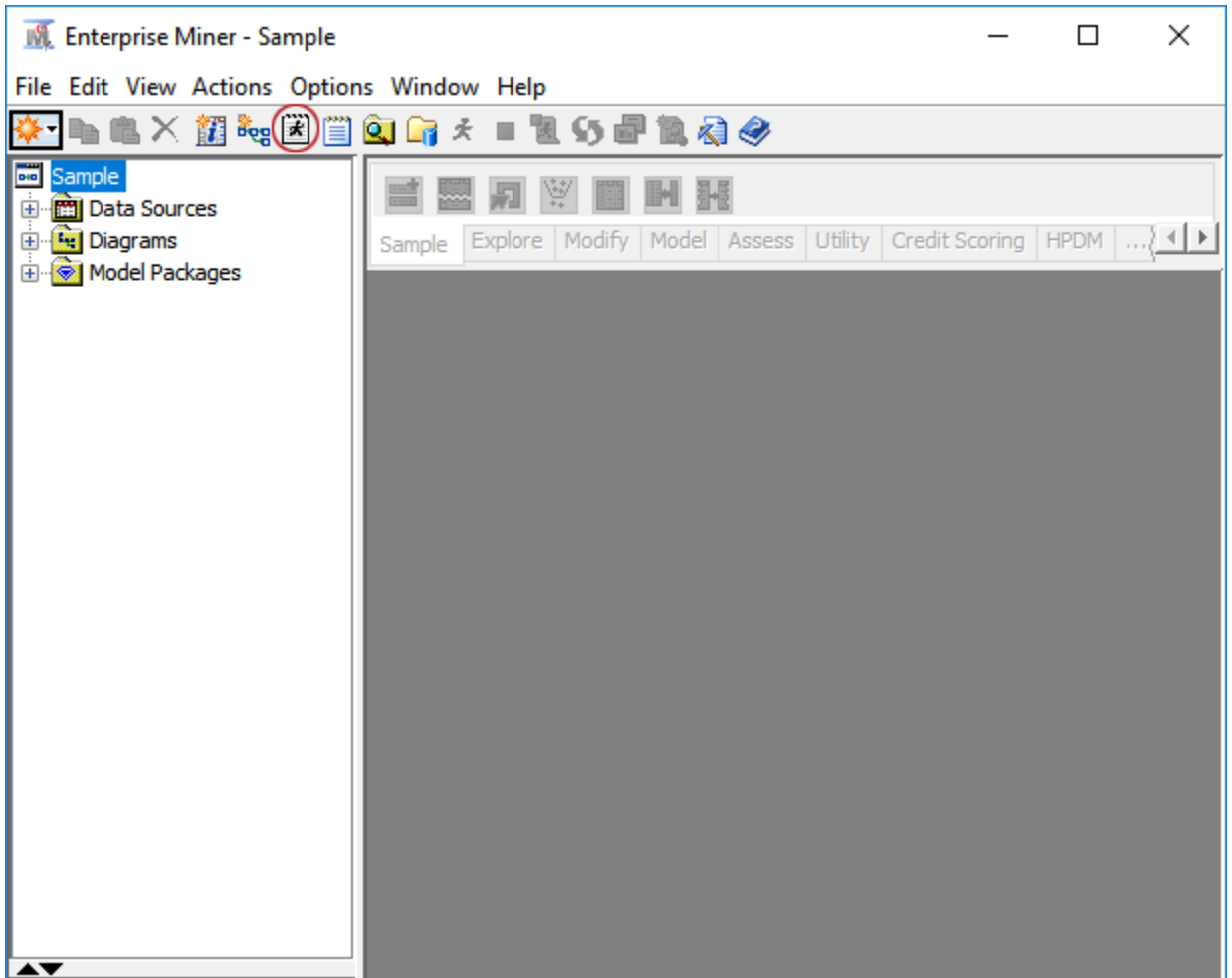
For example, a **Course data directory** value of `/my_shared_file_links/UUUUUUUU` equates to the following LIBNAME statement:


```
libname mydata "/my_shared_file_links/UUUUUUUU"  
access=readonly;  
  
run;
```

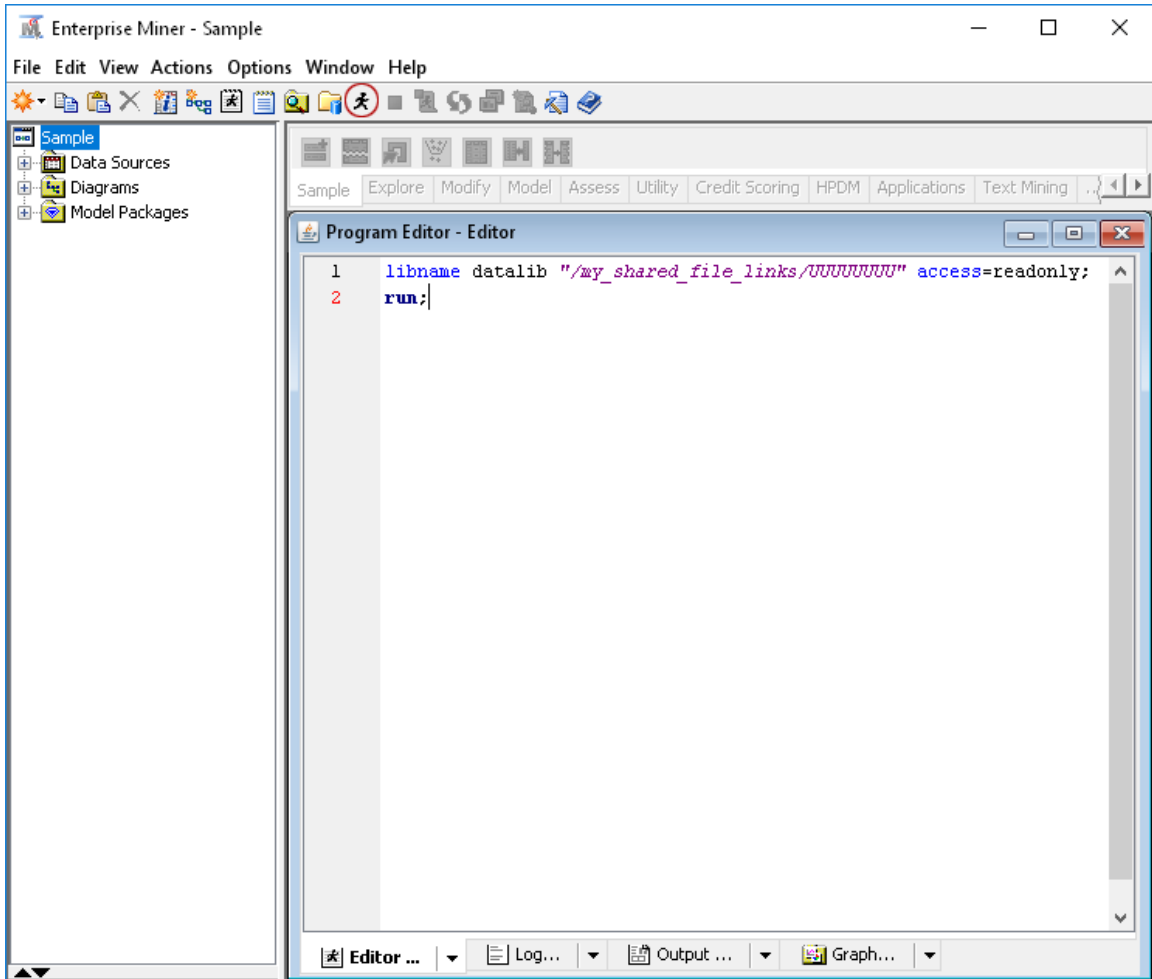
Note: The “`access=readonly`” option restricts students from altering your `my_shared_file_link` folder.


7. Launch SAS Enterprise Miner and start a new project. Test to see whether the LIBNAME statement works.

8. At the top of the application click  to bring up your editor window.

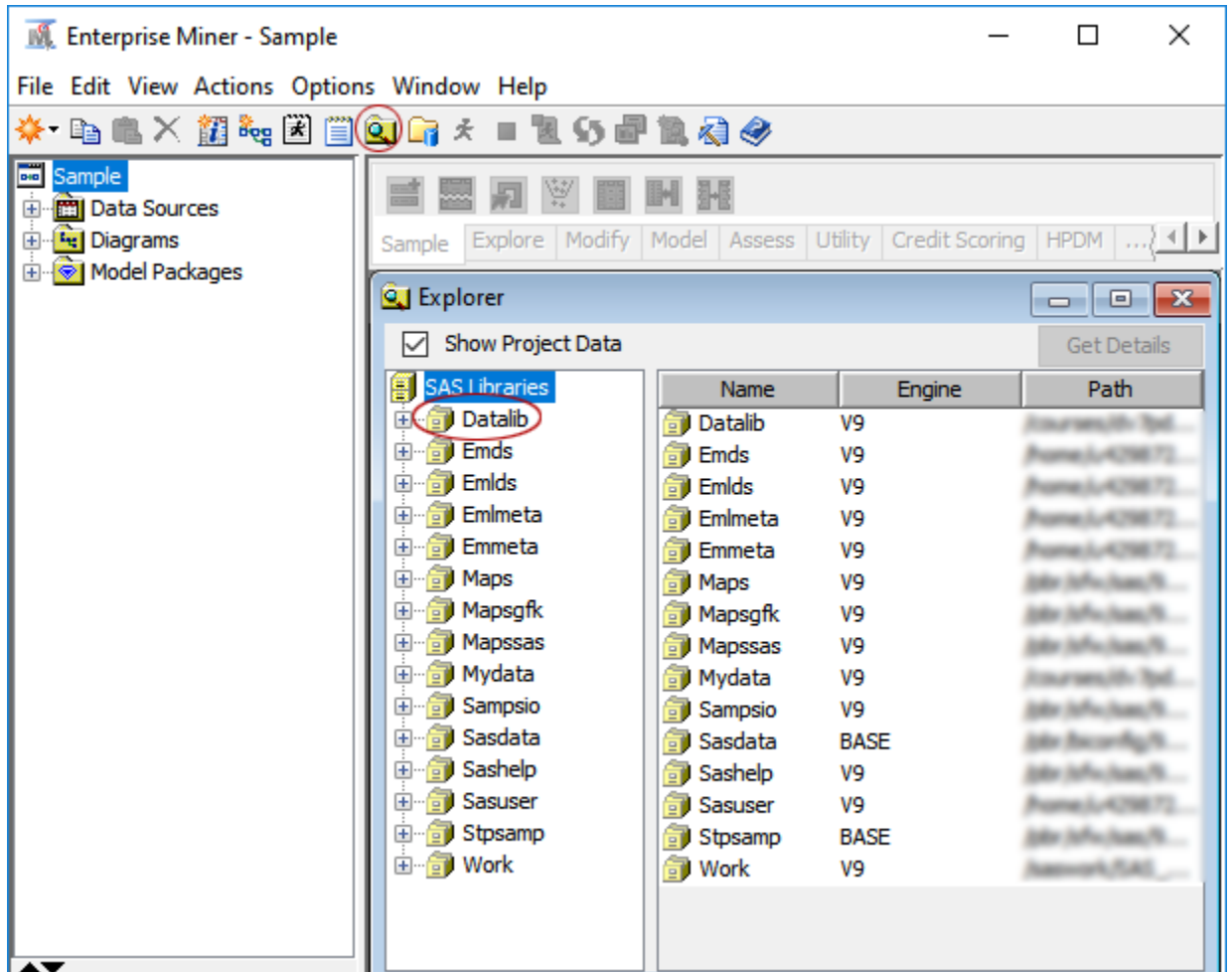


9. In the editor window, enter the LIBNAME statement for your course. Click  to run your program.



10. The library that contains all of the data sets for the course should be created. Click  to bring up your list of libraries.

You see that a library named **Datalib** has been created and contains the sample data set that you uploaded.



Share this document with your students so that they access any course data sets that you plan to use.