

2010

SAS® Education

Providing knowledge through global training and certification



January – June 2010

Course Schedule

US CONTACT INFORMATION

- ▶▶ support.sas.com/training
- ▶▶ 800-333-7660
- ▶▶ training@sas.com



THE
POWER
TO KNOW.

Table of Contents

PROGRAMMER/ANALYST

- 4 Data Cleaning Techniques
- 4 Health Care Data and the SAS® System
- 4 Processing Database and Spreadsheet Data with SAS/ACCESS® Software
- 4 SAS® Certification Review: Base Programming for SAS®9
- 4 SAS® Enterprise Guide® 1: Querying and Reporting
- 5 SAS® Enterprise Guide® 2: Advanced Tasks and Querying
- 5 SAS® Enterprise Guide® for Experienced SAS® Programmers
- 5 SAS® Functions by Example
- 5 SAS® Macro Language 1: Essentials
- 6 SAS® Macro Language 2: Developing Macro Applications
- 6 SAS® Programming 1: Essentials
- 6 SAS® Programming 2: Data Manipulation Techniques
- 8 SAS® Programming 3: Advanced Techniques and Efficiencies
- 8 SAS® Programming Essentials for Experienced SAS® Enterprise Guide® Users
- 8 SAS® Programming Introduction: Basic Concepts
- 9 SAS® SQL 1: Essentials

REPORT WRITER

- 9 Advanced Output Delivery System Topics
- 9 Base SAS® to Microsoft Excel: Counting the Ways
- 10 Graph Template Language: Beyond the Basics
- 10 SAS/GRAPH® 1: Essentials
- 10 SAS® Report Writing 1: Using Procedures and ODS
- 10 What's New in the Output Delivery System in SAS® 9.2

BUSINESS USER

- 10 Accessing Information Using the SAS® Information Delivery Portal
- 10 Accessing SAS® from Microsoft Office Applications
- 10 Introduction to SAS® Business Intelligence Applications for Reporting and Analysis
- 11 Personalizing the SAS® Information Delivery Portal
- 11 SAS® Business Intelligence Reporting 1: Essentials
- 11 SAS® Business Intelligence Reporting 2: Additional Topics
- 11 Using SAS® Web Report Studio
- 11 Using SAS® Web Report Studio for Thin-Client Reporting

BI CONTENT DEVELOPER

- 11 Advanced OLAP Techniques Using SAS®
- 11 Creating Business Intelligence for Your Organization: Fast Track
- 11 Creating and Exploiting OLAP Using the SAS® System
- 11 Creating Business Intelligence for Your Organization 1: Essentials
- 11 Creating Business Intelligence for Your Organization 2: Additional Topics
- 11 Creating, Distributing, and Using SAS® Stored Processes
- 11 Customizing and Administering SAS® Web Report Studio
- 11 Customizing and Administering the SAS® Information Delivery Portal
- 11 Designing, Tuning, and Maintaining SAS® OLAP Cubes
- 12 Overview of SAS® Business Intelligence and Data Integration Applications
- 12 SAS®9 Business Intelligence Fast Track
- 12 SAS® BI Dashboard: Developing and Using Dashboards

- 12 SAS® Visual BI: Dynamic Data Visualization
- 12 Using SAS® Information Map Studio to Create Information Maps
- 12 What's New in SAS®9.2 Business Intelligence

BI APPLICATIONS DEVELOPER

- 12 Building Java-based Web Applications with SAS® 1
- 12 Building Java-based Web Applications with SAS® 2
- 12 Creating Web Applications Using SAS® Stored Processes
- 12 Customizing SAS® Web Applications
- 12 Developing Java Web Applications Using SAS® AppDev Studio™ Plug-ins
- 12 SAS/AF® Software: Application Development I
- 12 SAS/AF® Software: Application Development II
- 12 Using SAS® AppDev Studio™ to Build Custom Portlets for the SAS® Information Delivery Portal

PROJECT MANAGER

- 13 Maximizing Technology and Resource Investment with a BI Competency Center

DATA INTEGRATION DEVELOPER

- 13 SAS® Data Integration Studio: Fast Track
- 13 SAS®9 Data Integration Fast Track
- 13 Introduction to SAS® Data Integration Studio
- 13 SAS® Data Integration Studio 1: Essentials
- 13 SAS® Data Integration Studio 2: Additional Topics
- 13 SAS® Programming for Data Integration Developers
- 13 Using SAS® Data Integration Studio to Build Data Marts from Enterprise Data Sources
- 13 Using SAS® Data Integration Studio to Create Efficient ETL Processes
- 13 Using the SAS® Data Quality Solution to Cleanse Your Data
- 13 What's New in SAS®9.2 Data Integration

STATISTICAL ANALYST

- 13 Advanced Analytics Using the MIXED Procedure
- 13 Advanced Statistical Modeling Using the NLMIXED Procedure
- 14 Categorical Data Analysis Using Logistic Regression
- 14 Design and Analysis of Probability Surveys
- 14 Determining Power and Sample Size Using SAS/STAT® Software
- 14 Fitting Poisson Regression Models Using the GENMOD Procedure
- 14 Fitting Tobit and Other Limited Dependent Variable Models
- 14 Getting Started with SAS® Analytics Pro Using SAS® Enterprise Guide®
- 14 Imputation Techniques
- 14 Introduction to Programming with SAS/IML® Software
- 14 Introduction to Statistical Concepts: Means, Standard Deviations, Confidence Intervals and Hypotheses Testing
- 14 Introduction to Structural Equation Modeling
- 14 Longitudinal Data Analysis with Discrete and Continuous Responses
- 14 Mixed Models Analyses Using SAS®
- 14 Modern Multiple Comparisons and Multiple Tests Using SAS®
- 14 Multilevel Modeling of Hierarchical and Longitudinal Data Using SAS®
- 14 Multiple Comparisons in SAS®: Classical to Modern Methods
- 14 Multivariate Statistical Methods: Practical Research Applications
- 14 Robust Regression Techniques

- 15 SAS® Enterprise Guide®: ANOVA, Regression, and Logistic Regression
- 15 Statistical Analysis with the GLIMMIX Procedure
- 15 Statistical Graphics with ODS
- 15 Statistics 1: Introduction to ANOVA, Regression, and Logistic Regression
- 15 Statistics 2: ANOVA and Regression
- 15 Survival Analysis Using the Proportional Hazards Model

MARKET RESEARCHER

- 15 Applied Clustering Techniques
- 15 Conjoint Analysis: Evaluating Consumer Preferences Using SAS® Software
- 15 Design of Experiments for Direct Marketing
- 15 Discrete Choice Modeling Using SAS® Software
- 15 Getting the Most Out of Testing in Direct/Internet Marketing
- 15 Graphical Techniques for Marketing Research
- 15 Web Analytics and Web Intelligence Using SAS®

JMP ANALYST

- 16 JMP® Software: ANOVA and Regression
- 16 JMP® Software: Classic Design of Experiments
- 16 JMP® Software: Custom Design of Experiments
- 16 JMP® Software: Data Exploration
- 16 JMP® Software: Introduction to the JMP® Scripting Language
- 16 JMP® Software: Stability Analysis

DATA MINER

- 16 Advanced Analytics for Customer Intelligence Using SAS®
- 16 Applied Analytics Using SAS® Enterprise Miner™
- 16 Applying Survival Analysis to Business Time-to-Event Problems
- 16 Credit Scorecard Development and Implementation
- 17 Customer Segmentation Using SAS® Enterprise Miner™
- 17 Data Mining Techniques: Theory and Practice
- 17 Decision Tree Modeling
- 17 Exploratory Analysis for Large and Complex Problems
- 17 Exploratory Data Mining with Application to Life and Social Sciences
- 17 Neural Network Modeling
- 17 Predictive Modeling Using Logistic Regression
- 17 Survival Data Mining: Predictive Hazard Modeling for Customer History Data

FORECASTER

- 17 Forecasting Using SAS® Forecast Server Software
- 17 Forecasting Using SAS® Software: A Programming Approach
- 17 Introduction to Applied Econometrics
- 17 Modeling Trend, Cycles, and Seasonality in Time Series Data Using PROC UCM
- 17 Stationarity Testing and Other Time Series Topics
- 17 Using SAS® High-Performance Forecasting Software

SAS® PLATFORM ADMINISTRATOR

- 18 SAS® Platform Administration: Fast Track
- 18 SAS® Platform Administrator Fast Track
- 18 Accessing Data via the SAS® Intelligence Platform
- 18 Authentication in the SAS®9 Intelligence Platform
- 18 Authorization in the SAS®9 Intelligence Platform
- 18 SAS® OLAP Environment: Administration

- 18 SAS® Platform Administration: Getting Started
- 18 Technical Overview of the SAS® Intelligence Platform Architecture
- 18 Using SAS® Management Console to Administer SAS®9
- 18 What's New in SAS®9.2 Platform Administration

CUSTOMER INTELLIGENCE

- 18 Designing and Executing Marketing Campaigns Using SAS® Customer Intelligence Studio
- 18 Managing Broadcasts Using SAS® Digital Marketing
- 18 Managing the SAS® Marketing Automation Data Environment

RISK MANAGEMENT

- 18 Credit Risk Modeling Using SAS®

FINANCIAL MANAGEMENT

- 19 SAS® Financial Management: Data Administration
- 19 SAS® Financial Management: Foundations Training

IT MANAGEMENT

- 19 SAS® IT Resource Management: Administration and Reporting

ACTIVITY-BASED MANAGEMENT

- 19 ABC Modeling Using SAS® Activity-Based Management 6.4
- 19 Advanced Modeling Techniques Using SAS® Activity-Based Management 6.x
- 19 Data Integration for SAS® Activity-Based Management 6.x
- 19 SAS® Activity-Based Management 6.x Advanced Reporting and Analysis

STRATEGY MANAGEMENT

- 19 Creating and Administering Scorecard Projects
- 19 Loading Scorecard Metric Values through SAS® Data Integration Studio

SUSTAINABILITY MANAGEMENT

- 19 Greenhouse Gas Modeling with SAS® for Sustainability Management

PROFITABILITY MANAGEMENT

- 19 Measuring Profit Performance Using SAS® Profitability Management

Course Schedule

All available courses are not automatically scheduled in training centers, but are available on demand. If you do not see a course you need in this schedule, please visit support.sas.com/training, contact us at 800-333-7660 or e-mail training@sas.com.

In this supplement, you will find the January–June 2010 course schedule. The courses are listed alphabetically by job role and include the location and dates it is offered.

SAS[®] Global Certification Program

Make yourself indispensable in today's challenging economy.

- **Increase** your career opportunities.
- Earn **global recognition** for your SAS expertise.
- **Distinguish** yourself in today's competitive job market.

▶ support.sas.com/certify



Know Your Role

SAS®9 offers solutions for a wide variety of users, ranging from business users to programmers and statistical analysts. To find the training path best suited to your needs, simply match your job role to one or more of the examples below. Please refer to pages 8-9 of the 2010 catalog for detailed information on each job role.

SAS® Foundation

- Programmer/Analyst
- Report Writer

SAS® Enterprise Intelligence Business Intelligence

- Business User
- BI Content Developer
- BI Applications Developer
- Project Manager
- Data Integration Developer
- Data Integration Architect
- Data Quality Steward

SAS® Analytics

- Statistical Analyst
- Market Researcher
- Operations Researcher
- JMP® Analyst
- Data Miner
- Forecaster
- Six Sigma Professional
- Performance Excellence Manager

SAS® Solutions

- Customer Intelligence
- Risk Management
- Merchandise Intelligence
- Financial Management
- IT Management
- Human Capital Management
- Activity-Based Management
- Strategy Management
- Sustainability Management
- Profitability Management
- Warranty Analysis

Training Locations



support.sas.com/locations

SAS Global Forum
April 11-14, 2010
Seattle, WA

Role/Course/Location	Jan	Feb	Mar	Apr	May	Jun
PROGRAMMER/ANALYST						
■ Data Cleaning Techniques (2 days)						
Chicago			8			
San Francisco	14					
Washington, DC					13	
■ Health Care Data and the SAS® System (2 days)						
Boston		9				
New York					26	
San Francisco	26					
■ Processing Database and Spreadsheet Data with SAS/ACCESS® Software (1 day)						
Rockville					7	
San Francisco			10			
■ SAS® Certification Review: Base Programming for SAS®9 (2 days)						
Atlanta				8		
Cary					20	
New York	28					
■ SAS® Enterprise Guide® 1: Querying and Reporting (2 days)						
Atlanta			1			7
Austin		17				
Bedminster			25			
Boston		4			3	
Burbank		8				
Cary				15		
Charlotte				29		
Chicago	25			19		
Dallas					6	
Denver						8
Des Moines						15
Detroit					17	
Hartford						3
Houston	21					
Irvine			29			
Live Web	11	1	1	12	3	7
Minneapolis	28			26		
New York	11			26		
Orlando		10		6		
Overland Park			30			
Philadelphia		25				
Phoenix						17
Rockville	11			22		
Sacramento			22			
San Francisco		1				
Seattle						24
Washington, DC		17				

Role/Course/Location	Jan	Feb	Mar	Apr	May	Jun
■ SAS® Enterprise Guide® 2: Advanced Tasks and Querying (2 days)						
Boston					24	
Chicago						1
Dallas			15			
Detroit						14
Live Web		23			24	
Minneapolis					17	
Overland Park				22		
Philadelphia			18			
Rockville		11			11	
SAS Global Forum - Seattle				8		
■ SAS® Enterprise Guide® for Experienced SAS® Programmers (2 days)						
Atlanta		11				
Chicago					13	
Des Moines	26					
Live Web					10	
Minneapolis				8		
New York			15			
Rockville	21					
■ SAS® Functions by Example (2 days)						
Chicago				26		
Overland Park						17
Washington, DC		10				
■ SAS® Macro Language 1: Essentials (2 days)						
Atlanta			29			
Austin				8		
Bedminster		25				
Boston			18			24
Burbank	13					
Cary	28		29			
Charlotte					6	
Chicago	14		18		24	
Dallas		25				
Dayton			2			
Denver		9				
Des Moines			10			
Detroit				20		
Hartford				15		
Houston					13	
Irvine			1			
Live Web		16		27		15
Minneapolis		18				23
New York	21		11		6	
Orlando		3				

Role/Course/Location	Jan	Feb	Mar	Apr	May	Jun
■ SAS® Macro Language 1: Essentials (2 days) (continued)						
Overland Park			18			
Philadelphia			22			7
Phoenix		8				
Rockville	25	18	24	15	13	14
Sacramento						10
San Antonio	21					
San Francisco		11			20	
Seattle			22			
Washington, DC		3				3
■ SAS® Macro Language 2: Developing Macro Applications (2 days)						
Atlanta					13	
Bedminster					18	
Boston				19		
Burbank			29			
Cary		22				
Charlotte						3
Chicago						17
Dallas						28
Denver					11	
Detroit	21					
Hartford					24	
Irvine				26		
Minneapolis				15		
New York		8				
Philadelphia				7		
Phoenix					6	
Rockville		1		8		7
San Francisco			11			
Seattle				15		
■ SAS® Programming 1: Essentials (3 days)						
Atlanta	13	8	17	14		9
Austin	13				19	
Bedminster	27		15			16
Boston	20	17	24	21		2
Burbank			2		12	
Cary	13	8	10	7	5	9
Charlotte		17			17	
Chicago	11	10	15	7	5	9
Dallas	27			21		9
Dayton	27			28		
Denver	26			27		
Des Moines				13		
Detroit	27			28		
Hartford	20		15		12	

Role/Course/Location	Jan	Feb	Mar	Apr	May	Jun
Houston		3				
Irvine	20			7		15
Live Web	12	4	4	6	5	1
Minneapolis			1	21		7
New York	13	3	3	7	3	2
Orlando	20			21		
Overland Park		24				2
Philadelphia	13	8	15	12	5	9
Phoenix	12		23			22
Rockville	13	3	29		5	2
Sacramento		23			18	
San Antonio				14		
San Francisco		22		19		9
Seattle		22			24	
Washington, DC	20			14		
■ SAS® Programming 2: Data Manipulation Techniques (3 days)						
Atlanta		17		19		28
Austin		22				
Bedminster		3		7		2
Boston	27		29		19	
Burbank			23			23
Cary		17	15	14	12	14
Charlotte			30			9
Chicago	20		2	14	17	14
Dallas			17			22
Dayton		24			24	
Denver			2			22
Des Moines					4	
Detroit		1				
Hartford		22				9
Houston				21		
Irvine		3			18	
Live Web	22		12		14	18
Minneapolis			10			14
New York	20	17	15	14	12	7
Orlando			10			2
Overland Park						28
Philadelphia	27		24		12	
Phoenix	26			28		
Rockville	20	17	15	7	19	14
Sacramento			9			
San Antonio					24	
San Francisco		8		14		14
Seattle			15			
Washington, DC	27			21		

Role/Course/Location	Jan	Feb	Mar	Apr	May	Jun
■ SAS® Programming 3: Advanced Techniques and Efficiencies (3 days)						
Atlanta		3				
Austin						8
Bedminster					12	
Boston			3			
Burbank	20					
Cary		24			17	
Charlotte				21		
Chicago				26		
Dallas				14		
Dayton						22
Denver					18	
Hartford				7		
Irvine			15			
Live Web	27			22		
Minneapolis					12	
New York			10			14
Orlando					4	
Overland Park			2			
Philadelphia		17				2
Phoenix		2				
Rockville	27			7		
Sacramento		9				
San Francisco				26		
Seattle						8
Washington, DC					5	
■ SAS® Programming Essentials for Experienced SAS® Enterprise Guide® Users (2 days)						
Atlanta					6	
Bedminster				28		
Charlotte				15		
Chicago			31			
Dallas		11				
Live Web		8			17	
Minneapolis						17
New York		1				
Overland Park	13					
Rockville			22			
San Antonio			18			
San Francisco	21					
■ SAS® Programming Introduction: Basic Concepts (2 days)						
Atlanta			31			
Cary	11				3	
Charlotte					13	
Chicago		1				
Dallas			1			

Role/Course/Location	Jan	Feb	Mar	Apr	May	Jun
Live Web				6		
Minneapolis						3
New York			22			
Orlando						15
Philadelphia				19		
Rockville		8		15		10
Washington, DC					20	
■ SAS® SQL 1: Essentials (2 days)						
Atlanta					24	
Austin			25			
Bedminster		11				
Boston				8		
Burbank				12		
Cary	21			26		
Charlotte			16			
Chicago		25				3
Dallas		4				
Dayton				15		
Denver		17				
Des Moines		10				
Detroit			31			
Hartford						17
Houston						23
Irvine		18				
Live Web		22			18	
Minneapolis			25			
New York	14			19		
Orlando			3			
Overland Park					20	
Philadelphia			1			14
Phoenix		22				
Rockville	11		11		5	
SAS Global Forum - Seattle				8		
Sacramento				22		
San Antonio						2
San Francisco			8			
Seattle	21					
Washington, DC			18			9
REPORT WRITER						
■ Advanced Output Delivery System Topics (4 sessions)						
Live Web			22			
■ Base SAS® to Microsoft Excel: Counting the Ways (1 session)						
Live Web			26			

Role/Course/Location	Jan	Feb	Mar	Apr	May	Jun
■ Graph Template Language: Beyond the Basics (1 day)						
SAS Global Forum - Seattle				8		
■ SAS/GRAPH® 1: Essentials (3 days) <i>SAS® 9.2 Course</i>						
Cary		17				
Dallas					18	
New York			29			
Rockville			10			
San Francisco						23
■ SAS® Report Writing 1: Using Procedures and ODS (3 days)						
Atlanta			3			
Bedminster	13					
Boston		1				
Cary	25					
Charlotte	20					
Chicago				28		
Dallas					12	
Denver				13		
Hartford			10			
Irvine						22
Live Web		24				24
Minneapolis					5	
New York			24			
Orlando					17	
Overland Park		17				
Philadelphia				21		
Phoenix			29			
Rockville		22				9
Sacramento					5	
San Antonio		9				
San Francisco	12					
Seattle		8				
Washington, DC			10			
■ What's New in the Output Delivery System in SAS® 9.2 (1 day)						
SAS Global Forum - Seattle				9		
BUSINESS USER						
■ Accessing Information Using the SAS® Information Delivery Portal (2 sessions)						
Live Web			25			
New York				30		
■ Accessing SAS® from Microsoft Office Applications (1 day)						
Cary <i>SAS® 9.2 Course</i>			3			
Live Web <i>SAS® 9.1.3 Course</i>			15			
New York <i>SAS® 9.1.3 Course</i>				28		
Rockville <i>SAS® 9.2 Course</i>						2
■ Introduction to SAS® Business Intelligence Applications for Reporting and Analysis (3 sessions)						
Live Web		23			25	

Role/Course/Location	Jan	Feb	Mar	Apr	May	Jun
■ Personalizing the SAS® Information Delivery Portal (1 day) SAS® 9.2 Course						
Cary			5			
Rockville						4
■ SAS® Business Intelligence Reporting 1: Essentials (2 days) SAS® 9.2 Course						
Chicago				29		
New York			30			
■ SAS® Business Intelligence Reporting 2: Additional Topics (2 days) SAS® 9.2 Course						
Chicago						7
New York				19		
■ Using SAS® Web Report Studio (1 day) SAS® 9.2 Course						
Cary			4			
Rockville						3
■ Using SAS® Web Report Studio for Thin-Client Reporting (3 sessions)						
Live Web			22			
New York				29		
BI CONTENT DEVELOPER						
■ Advanced OLAP Techniques Using SAS® (2 days)						
Chicago					20	
Rockville			1			
■ Creating Business Intelligence for Your Organization: Fast Track (5 days) SAS® 9.2 Course						
Cary					3	
Chicago	25					
Rockville						14
San Francisco			15			
■ Creating and Exploiting OLAP Using the SAS® System (2 days)						
Chicago			29			
Rockville	28					
■ Creating Business Intelligence for Your Organization 1: Essentials (3 days) SAS® 9.2 Course						
Rockville	13					
San Francisco				21		
■ Creating Business Intelligence for Your Organization 2: Additional Topics (3 days) SAS® 9.2 Course						
Rockville		17				
San Francisco					24	
■ Creating, Distributing, and Using SAS® Stored Processes (2 days)						
Minneapolis	20					
Rockville			8			
■ Customizing and Administering SAS® Web Report Studio (2 sessions)						
Live Web					13	
■ Customizing and Administering the SAS® Information Delivery Portal (2 sessions)						
Live Web		25				
■ Designing, Tuning, and Maintaining SAS® OLAP Cubes (3 days) SAS® 9.2 Course						
Atlanta						22
Cary				20		
New York		1				

Role/Course/Location	Jan	Feb	Mar	Apr	May	Jun
■ Overview of SAS® Business Intelligence and Data Integration Applications (2 days)						
New York					17	
Rockville			18			
San Francisco	28					
■ SAS®9 Business Intelligence Fast Track (5 days)						
Atlanta					17	
Dallas			22			
New York		22				
■ SAS® BI Dashboard: Developing and Using Dashboards (1 day)						
New York				23		
Rockville		5				
■ SAS® Visual BI: Dynamic Data Visualization (2 days) <i>SAS® 9.2 Course</i>						
New York				21		
Philadelphia					20	
Rockville		3				
■ Using SAS® Information Map Studio to Create Information Maps (1 day)						
Minneapolis	22					
Rockville			10			
■ What's New in SAS®9.2 Business Intelligence (2 days)						
Austin	25					
Cary					17	
Chicago						14
New York		8				
Rockville				26		
SAS Global Forum - Seattle				8		
San Francisco			1			
BI APPLICATIONS DEVELOPER						
■ Building Java-based Web Applications with SAS® 1 (2 days) <i>SAS® 9.2 Course</i>						
Cary					11	
■ Building Java-based Web Applications with SAS® 2 (3 days) <i>SAS® 9.2 Course</i>						
Cary						21
■ Creating Web Applications Using SAS® Stored Processes (2 days) <i>SAS® 9.2 Course</i>						
Cary					24	
■ Customizing SAS® Web Applications (2 days) <i>SAS® 9.2 Course</i>						
Cary	14					24
■ Developing Java Web Applications Using SAS® AppDev Studio™ Plug-ins (3 days)						
Rockville	20					
■ SAS/AF® Software: Application Development I (3 days)						
Rockville				26		
■ SAS/AF® Software: Application Development II (3 days)						
Rockville					17	
■ Using SAS® AppDev Studio™ to Build Custom Portlets for the SAS® Information Delivery Portal (2 sessions)						
Live Web			1			

Role/Course/Location	Jan	Feb	Mar	Apr	May	Jun
PROJECT MANAGER						
■ Maximizing Technology and Resource Investment with a BI Competency Center (1 day)						
Chicago				6		
New York						18
San Francisco	25					
DATA INTEGRATION DEVELOPER						
■ SAS® Data Integration Studio: Fast Track (5 days)						
Cary	11					
Rockville			22			
San Francisco					17	
■ SAS® 9 Data Integration Fast Track (5 days) <i>SAS® 9.2 Course</i>						
Chicago		8				
■ Introduction to SAS® Data Integration Studio (2 sessions)						
Live Web		17		8		
■ SAS® Data Integration Studio 1: Essentials (3 days) <i>SAS® 9.2 Course</i>						
Cary		1				
Chicago				21		
■ SAS® Data Integration Studio 2: Additional Topics (3 days) <i>SAS® 9.2 Course</i>						
Cary			8			
Chicago					5	
■ SAS® Programming for Data Integration Developers (3 sessions)						
Live Web			8			14
■ Using SAS® Data Integration Studio to Build Data Marts from Enterprise Data Sources (3 days)						
Charlotte						14
New York				21		
San Francisco		17				
■ Using SAS® Data Integration Studio to Create Efficient ETL Processes (2 days)						
Atlanta		25				
■ Using the SAS® Data Quality Solution to Cleanse Your Data (2 days)						
Rockville		8				
■ What's New in SAS®9.2 Data Integration (1 day)						
Austin	27					
Cary					19	
Chicago						16
New York		10				
Rockville				28		
SAS Global Forum - Seattle				7		
San Francisco			3			
STATISTICAL ANALYST						
■ Advanced Analytics Using the MIXED Procedure (2 days)						
Boston						14
Live Web	21			13		
■ Advanced Statistical Modeling Using the NLMIXED Procedure (2 sessions) <i>SAS® 9.2 Course</i>						
Live Web					20	

Role/Course/Location	Jan	Feb	Mar	Apr	May	Jun
■ Categorical Data Analysis Using Logistic Regression (6 sessions) <i>SAS® 9.2 Course</i>						
Live Web			2			22
Rockville				21		
■ Design and Analysis of Probability Surveys (6 sessions) <i>SAS® 9.2 Course</i>						
Live Web	13					
Rockville				21		
■ Determining Power and Sample Size Using SAS/STAT® Software (2 sessions) <i>SAS® 9.2 Course</i>						
Live Web			16		26	
■ Fitting Poisson Regression Models Using the GENMOD Procedure (1 session) <i>SAS® 9.2 Course</i>						
Live Web			8		10	
■ Fitting Tobit and Other Limited Dependent Variable Models (1 session)						
Live Web						1
■ Getting Started with SAS® Analytics Pro Using SAS® Enterprise Guide® (3 sessions)						
Live Web		10	29		3	29
■ Imputation Techniques (1 session)						
Live Web	29				3	
■ Introduction to Programming with SAS/IML® Software (3 sessions)						
Live Web			3			9
■ Introduction to Statistical Concepts: Means, Standard Deviations, Confidence Intervals and Hypotheses Testing (1 session)						
Live Web			3			
■ Introduction to Structural Equation Modeling (1 session)						
Live Web			19			17
■ Longitudinal Data Analysis with Discrete and Continuous Responses (6 sessions) <i>SAS® 9.2 Course</i>						
Live Web		2				8
Rockville					17	
SAS Global Forum - Seattle				7		
■ Mixed Models Analyses Using SAS® (3 days) <i>SAS® 9.2 Course</i>						
Chicago					17	
Live Web	12			20		
■ Modern Multiple Comparisons and Multiple Tests Using SAS® (1 session)						
Live Web		26		23		
■ Multilevel Modeling of Hierarchical and Longitudinal Data Using SAS® (6 sessions)						
Live Web			15		3	
New York				14		
San Francisco		10				
■ Multiple Comparisons in SAS®: Classical to Modern Methods (3 days)						
Boston			8			
San Francisco					17	
■ Multivariate Statistical Methods: Practical Research Applications (3 days) <i>SAS® 9.2 Course</i>						
Dallas				28		
Live Web	26				25	
■ Robust Regression Techniques in SAS/STAT® (1 session)						
Live Web			15			

Role/Course/Location	Jan	Feb	Mar	Apr	May	Jun
■ SAS® Enterprise Guide®: ANOVA, Regression, and Logistic Regression (6 sessions)						
Live Web				7		2
■ Statistical Analysis with the GLIMMIX Procedure (4 sessions)						
Live Web			9			14
SAS Global Forum - Seattle				8		
■ Statistical Graphics with ODS (3 sessions)						
Live Web		12			19	
SAS Global Forum - Seattle				7		
■ Statistics 1: Introduction to ANOVA, Regression, and Logistic Regression (3 days) SAS® 9.2 Course						
Atlanta			10			
Boston				26		
Cary		24				
Chicago					12	
Live Web		3	17	14		16
New York				7		23
Rockville	25				24	
SAS Global Forum - Seattle				7		
San Francisco			24			2
■ Statistics 2: ANOVA and Regression (6 sessions) SAS® 9.2 Course						
Live Web		17			12	
New York				28		
Rockville			3			
SAS Global Forum - Seattle				7		
San Francisco						9
■ Survival Analysis Using the Proportional Hazards Model (4 sessions) SAS® 9.2 Course						
Live Web					4	
Rockville			25			
MARKET RESEARCHER						
■ Applied Clustering Techniques (4 sessions) SAS® 9.2 Course						
Live Web						21
Rockville			30			
■ Conjoint Analysis: Evaluating Consumer Preferences Using SAS® Software (1 session)						
Live Web			18			
■ Design of Experiments for Direct Marketing (4 sessions) SAS® 9.2 Course						
Live Web						7
New York			18			
■ Discrete Choice Modeling Using SAS® Software (2 sessions)						
Live Web						2
■ Getting the Most Out of Testing in Direct/Internet Marketing (2 sessions)						
Live Web				22		
■ Graphical Techniques for Marketing Research (1 session)						
Live Web				30		
■ Web Analytics and Web Intelligence Using SAS® (2 days)						
New York						10
San Francisco				1		

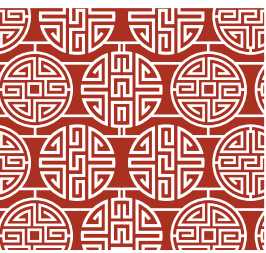
SAS reserves the right to cancel or schedule any course at its discretion. Please check the Web or contact SAS Education for the most current training schedule.

Role/Course/Location	Jan	Feb	Mar	Apr	May	Jun
JMP ANALYST						
■ JMP® Software: ANOVA and Regression (2 days)						
Boston						17
Cary	21					
Live Web		9		26		28
San Francisco				8		
■ JMP® Software: Classic Design of Experiments (4 sessions)						
Live Web	19				24	
Rockville					20	
San Francisco	28					
■ JMP® Software: Custom Design of Experiments (2 days)						
Cary					13	
Irvine		11				
Live Web	26			13		
■ JMP® Software: Data Exploration (1 day)						
Boston						16
Cary	20					
Live Web	14	18	11	15	6	10
San Francisco				7		
■ JMP® Software: Introduction to the JMP® Scripting Language (2 days)						
Austin		25				
Chicago						10
Live Web			24		11	
■ JMP® Software: Stability Analysis (1 day)						
Boston			11			
Live Web			31			3
Minneapolis						25
DATA MINER						
■ Advanced Analytics for Customer Intelligence Using SAS® (3 days)						
New York						7
San Francisco			29			
■ Applied Analytics Using SAS® Enterprise Miner™ (3 days)						
Chicago				7		
Live Web		16			11	
New York						23
San Francisco		3				
■ Applying Survival Analysis to Business Time-to-Event Problems (2 days)						
Boston		11				
Dallas					24	
New York			18			
Rockville				29		
San Francisco						17
■ Credit Scorecard Development and Implementation (2 days)						
San Francisco			8			

Role/Course/Location	Jan	Feb	Mar	Apr	May	Jun
■ Customer Segmentation Using SAS® Enterprise Miner™ (2 days)						
Boston				29		
San Francisco				15		
■ Data Mining Techniques: Theory and Practice (3 days)						
Boston						9
Dallas			3			
New York					19	
Rockville				19		
San Francisco		17				
■ Decision Tree Modeling (2 days)						
New York						3
■ Exploratory Analysis for Large and Complex Problems (2 days)						
Chicago			18			
■ Exploratory Data Mining with Application to Life and Social Sciences (3 days)						
Chicago					24	
Rockville		24				
■ Neural Network Modeling (2 days)						
Irvine					13	
Rockville	28					
■ Predictive Modeling Using Logistic Regression (4 sessions) <i>SAS® 9.2 Course</i>						
Live Web	25			19		
New York					24	
San Francisco			4			
■ Survival Data Mining: Predictive Hazard Modeling for Customer History Data (3 days)						
Dallas			29			
New York					12	
San Francisco	20					
FORECASTER						
■ Forecasting Using SAS® Forecast Server Software (2 days)						
Cary			15			
■ Forecasting Using SAS® Software: A Programming Approach (6 sessions)						
Live Web	11		23			
New York						28
Rockville		10				
■ Introduction to Applied Econometrics (3 days)						
Chicago				21		
Rockville					24	
San Francisco		22				
■ Modeling Trend, Cycles, and Seasonality in Time Series Data Using PROC UCM (1 session)						
Live Web						4
■ Stationarity Testing and Other Time Series Topics (1 session)						
Live Web		5		1		
■ Using SAS® High-Performance Forecasting Software (3 days)						
Cary			17			

Role/Course/Location	Jan	Feb	Mar	Apr	May	Jun
SAS® PLATFORM ADMINISTRATOR						
■ SAS® Platform Administration: Fast Track (5 days) SAS® 9.2 Course						
Cary	1			26		
Rockville		22				
San Francisco					3	
■ SAS® Platform Administrator Fast Track (5 days)						
Chicago			22			
Rockville						7
■ Accessing Data via the SAS® Intelligence Platform (3 sessions)						
Live Web				26		
■ Authentication in the SAS®9 Intelligence Platform (2 sessions)						
Live Web				29		
■ Authorization in the SAS®9 Intelligence Platform (2 sessions)						
Live Web					4	
■ SAS® OLAP Environment: Administration (1 day) SAS® 9.2 Course						
Atlanta						25
Cary				23		
New York		4				
■ SAS® Platform Administration: Getting Started (1 day) SAS® 9.2 Course						
Cary				19		
Rockville		2				
San Francisco				20		
■ Technical Overview of the SAS® Intelligence Platform Architecture (2 sessions)						
Live Web				19		
■ Using SAS® Management Console to Administer SAS®9 (3 sessions)						
Live Web				21		
■ What's New in SAS®9.2 Platform Administration (2 days)						
Austin	28					
Cary					20	
Chicago						17
New York		11				
Rockville				29		
SAS Global Forum - Seattle				8		
San Francisco			4			
CUSTOMER INTELLIGENCE						
■ Designing and Executing Marketing Campaigns Using SAS® Customer Intelligence Studio (2 days)						
Cary		10				
■ Managing Broadcasts Using SAS® Digital Marketing (1 day)						
Cary				20		
■ Managing the SAS® Marketing Automation Data Environment (1 day) SAS® 9.2 Course						
Cary		12				
RISK MANAGEMENT						
■ Credit Risk Modeling Using SAS® (4 days)						
New York						14
San Francisco			23			

Role/Course/Location	Jan	Feb	Mar	Apr	May	Jun
FINANCIAL MANAGEMENT						
■ SAS® Financial Management: Data Administration (2 days)						
Cary	25					
■ SAS® Financial Management: Foundations Training (3 days) <i>SAS® 9.2 Course</i>						
Cary	27					
IT MANAGEMENT						
■ SAS® IT Resource Management: Administration and Reporting (4 days)						
Cary		2				
New York					4	
ACTIVITY-BASED MANAGEMENT						
■ ABC Modeling Using SAS® Activity-Based Management 6.4 (4 days)						
Atlanta	26					
Boston		23				
Cary						1
Irvine				20		
■ Advanced Modeling Techniques Using SAS® Activity-Based Management 6.x (2 days)						
Cary			31			
Rockville						24
■ Data Integration for SAS® Activity-Based Management 6.x (2 days)						
Cary	28					
Chicago		18				
Irvine					4	
Live Web			16			21
■ SAS® Activity-Based Management 6.x Advanced Reporting and Analysis (2 days)						
Cary			29			
Rockville						22
STRATEGY MANAGEMENT						
■ Creating and Administering Scorecard Projects (2 days)						
Cary						7
■ Loading Scorecard Metric Values through SAS® Data Integration Studio (1 day)						
Cary						9
SUSTAINABILITY MANAGEMENT						
■ Greenhouse Gas Modeling with SAS® for Sustainability Management (2 days)						
Cary	25					
Chicago			10			
Live Web			29			28
San Francisco					12	
PROFITABILITY MANAGEMENT						
■ Measuring Profit Performance Using SAS® Profitability Management (2 days)						
Chicago		23				
Irvine					6	



20 10

APRIL 11-14
SEATTLE
WASHINGTON

We can't promise sunny weather. But we can offer you a clear advantage.

SAS® professionals from all over the world will be gathering together in April to take their skills and understanding of SAS to the next level. During this premier event, you'll hear from respected thought leaders and industry experts about how to meet challenges with success; roll up your sleeves in hands-on workshops about latest SAS technologies; and learn innovative approaches for improving your organization's return on investment. Don't miss the unmatched educational and networking opportunities that will prove more important than ever in today's competitive economy.

Take advantage of the training and certification opportunities available at SAS Global Forum. Attendees are eligible to receive 20 percent off standard public course and exam fees. Simply enter "EDU20" when completing your online event registration.

www.sasglobalforum.org/2010 • 919-531-5001 • 1-877-899-9933





support.sas.com/training/discounts

SAS® EDUCATION

BEST VALUES

Save up to 50%

when you bundle training and certification together.

Save up to 31%

with our pre-paid, volume discount, Enterprise Professional Training Offer (EPTO). Perfect for group training!

Choose any three classes for **one low price**
With our Take 3, Any 3. It's like getting one class for free.
Plus, get a FREE GIFT!

SAS and all other SAS Institute Inc. product or service names are registered trademarks or trademarks of SAS Institute Inc. in the USA and other countries. ® indicates USA registration. Other brand and product names are trademarks of their respective companies. Copyright © 2009 SAS Institute Inc. Cary, NC, USA. All rights reserved. 533212_0909



Mixed Sources

Product from well-managed
forests and controlled sources and
recycled wood fiber

www.fsc.org Cert no.
© 1996 Forest Stewardship Council

No travel budget? You can still get SAS training.

Experience SAS' Live Web Classroom and get all the benefits of a traditional classroom setting without the hassle and expense of travel. Interact with instructors and classmates in real-time, right at your desk.



SAS® Live Web Classes.

All the benefits of the classroom without the hassle and expense of travel.

support.sas.com/lw



**THE
POWER
TO KNOW.**