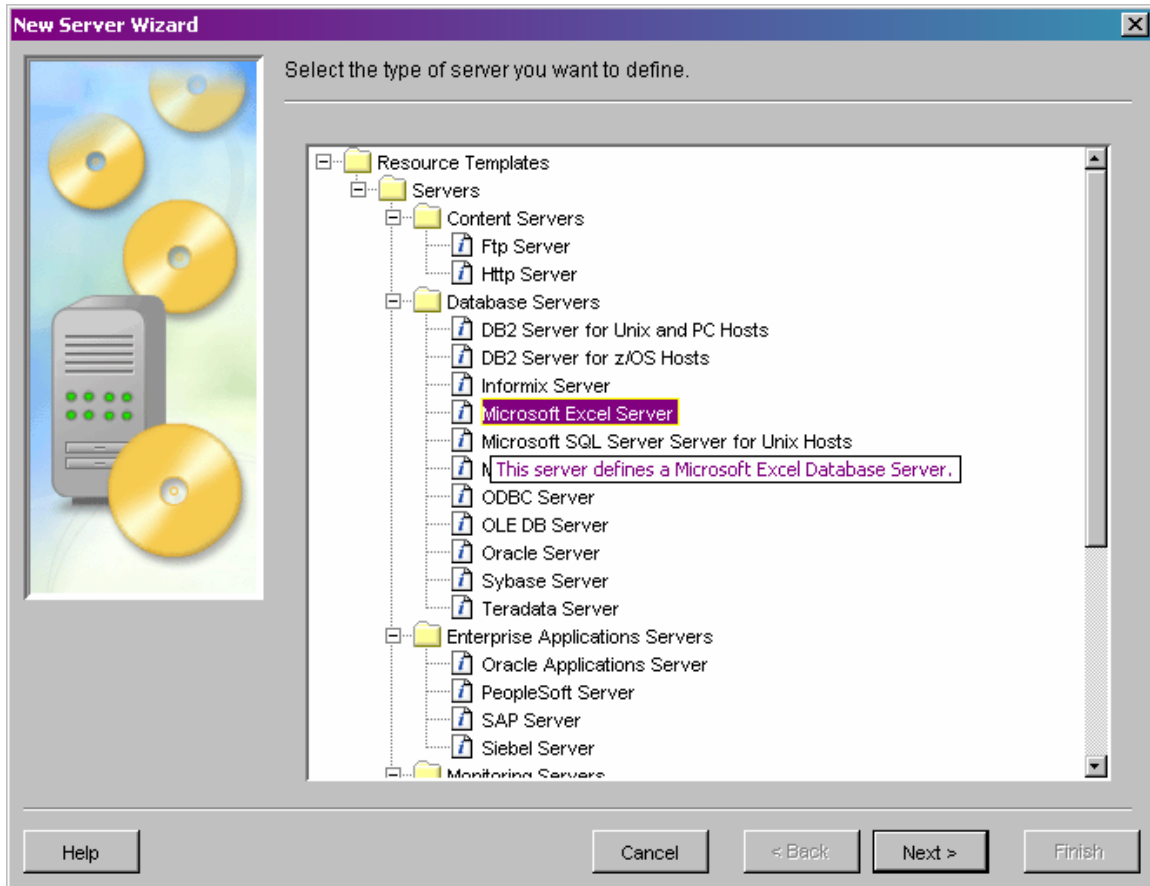


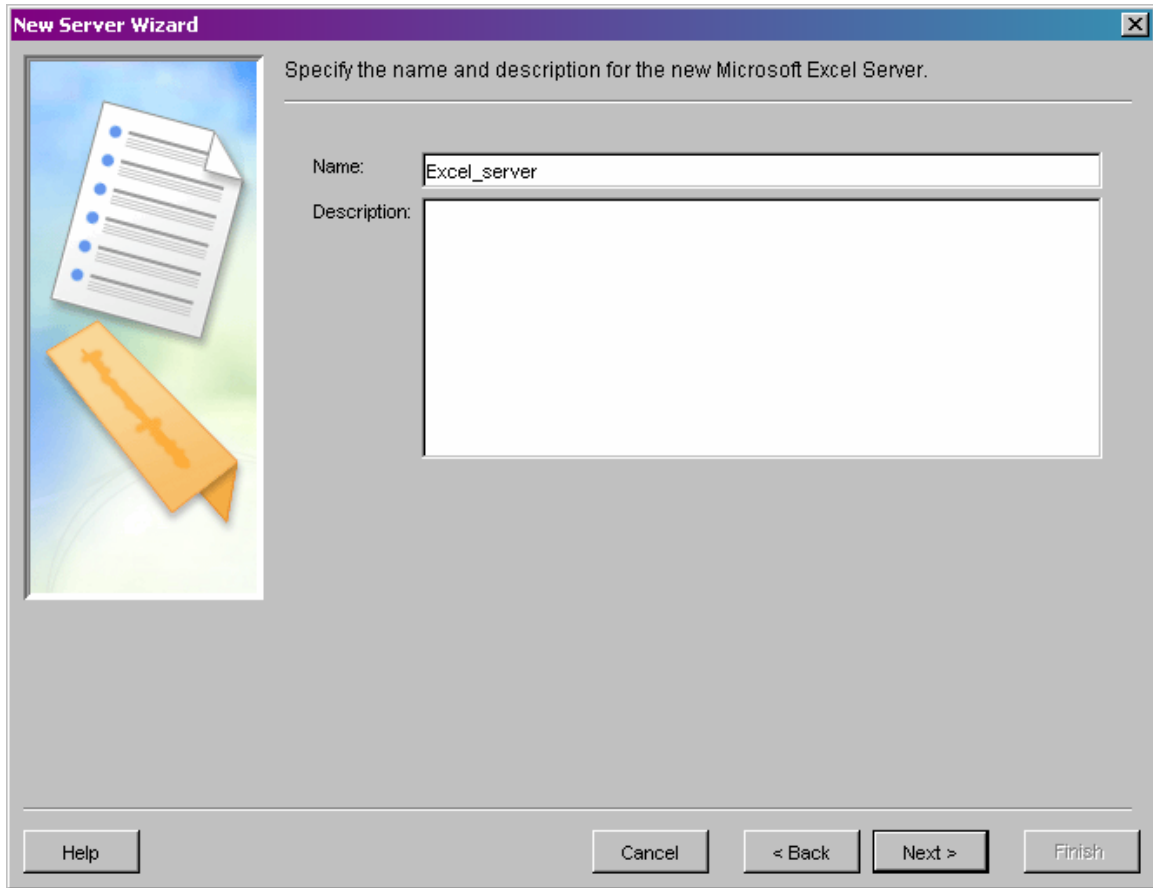
To add an Excel library to SAS Management Console

Log into SAS Management Console, as SASADM

1) In Server Manager, create a new server. Choose 'Microsoft Excel Server' and select 'Next':



Specify a name for the new Excel server and select 'Next':



Make sure the server properties are correct and select 'Next':

New Server Wizard [X]

Enter the following server properties.

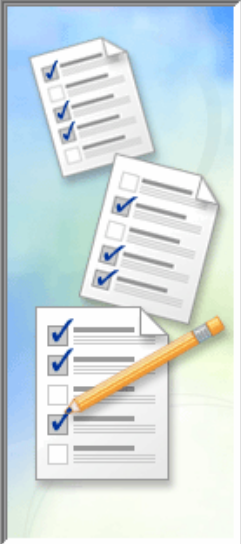
Major Version Number:

Minor Version Number:

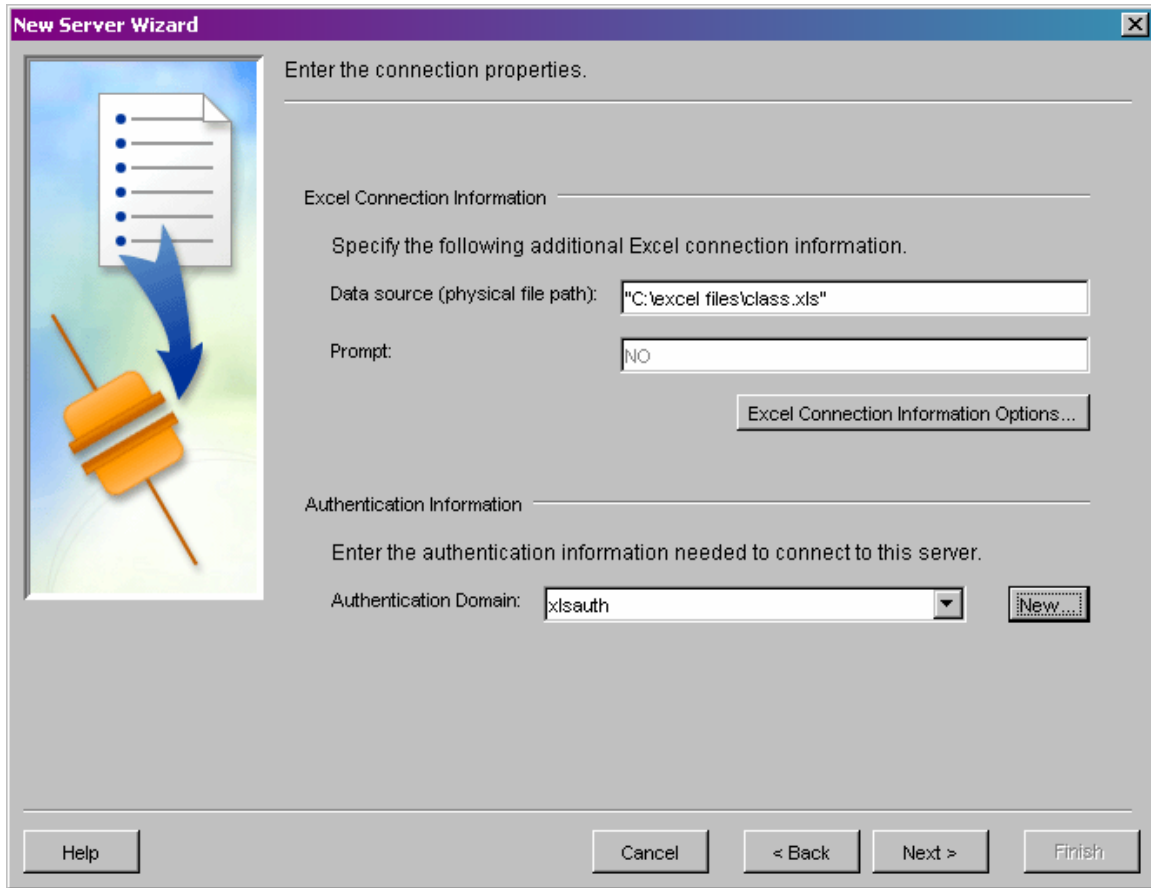
Software Version:

Vendor:

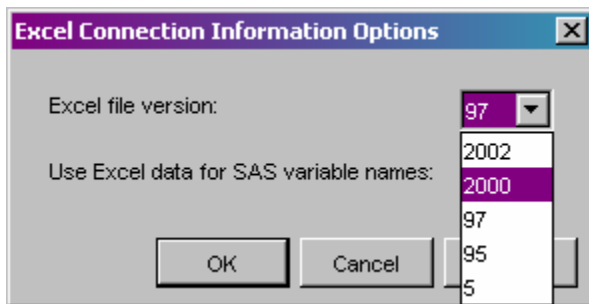
Associated Machine:



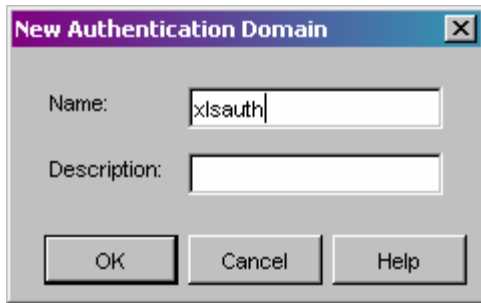
In the connection properties window, enter the full path to the Excel file within quotes:



Click on Excel Connection Information Options and choose the correct version of Excel, and whether or not to get the variable names from the first row in the Excel file:



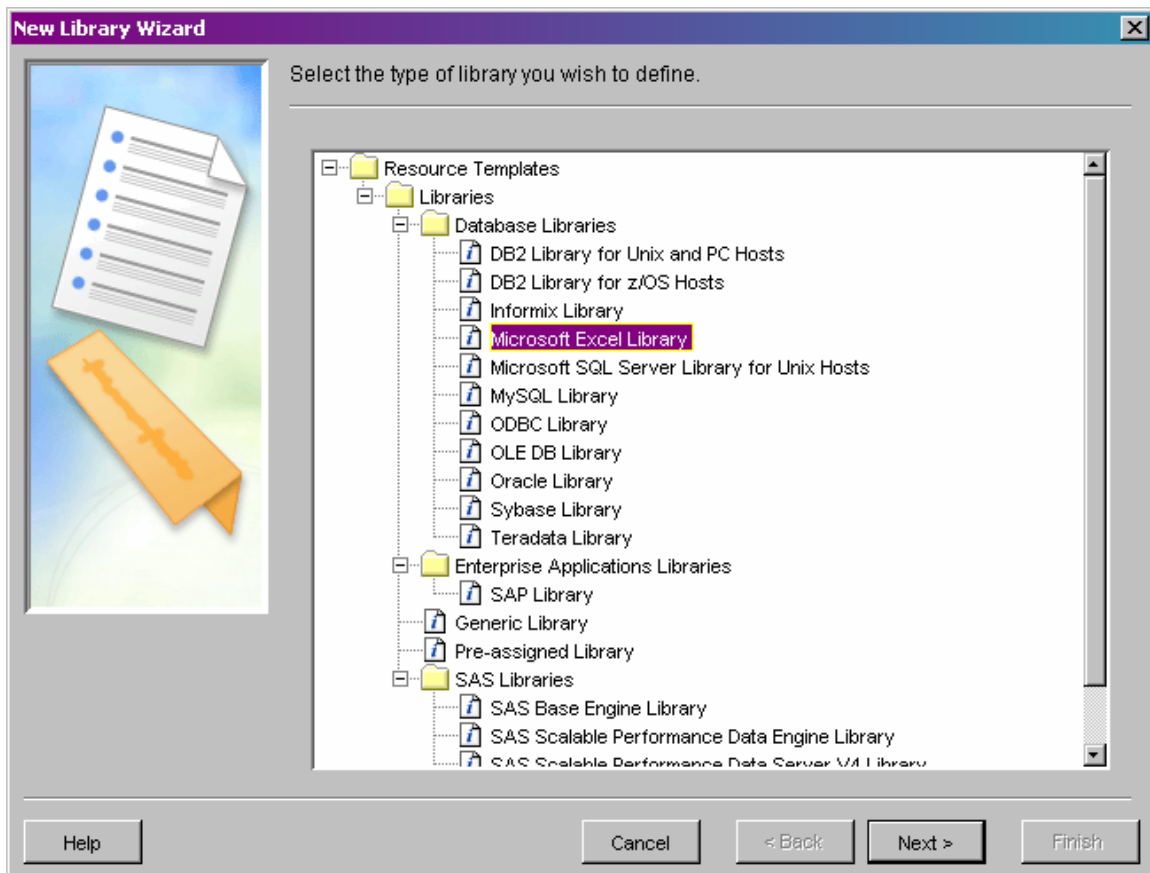
Under the authentication domain, select New and create a new domain for the Excel server:



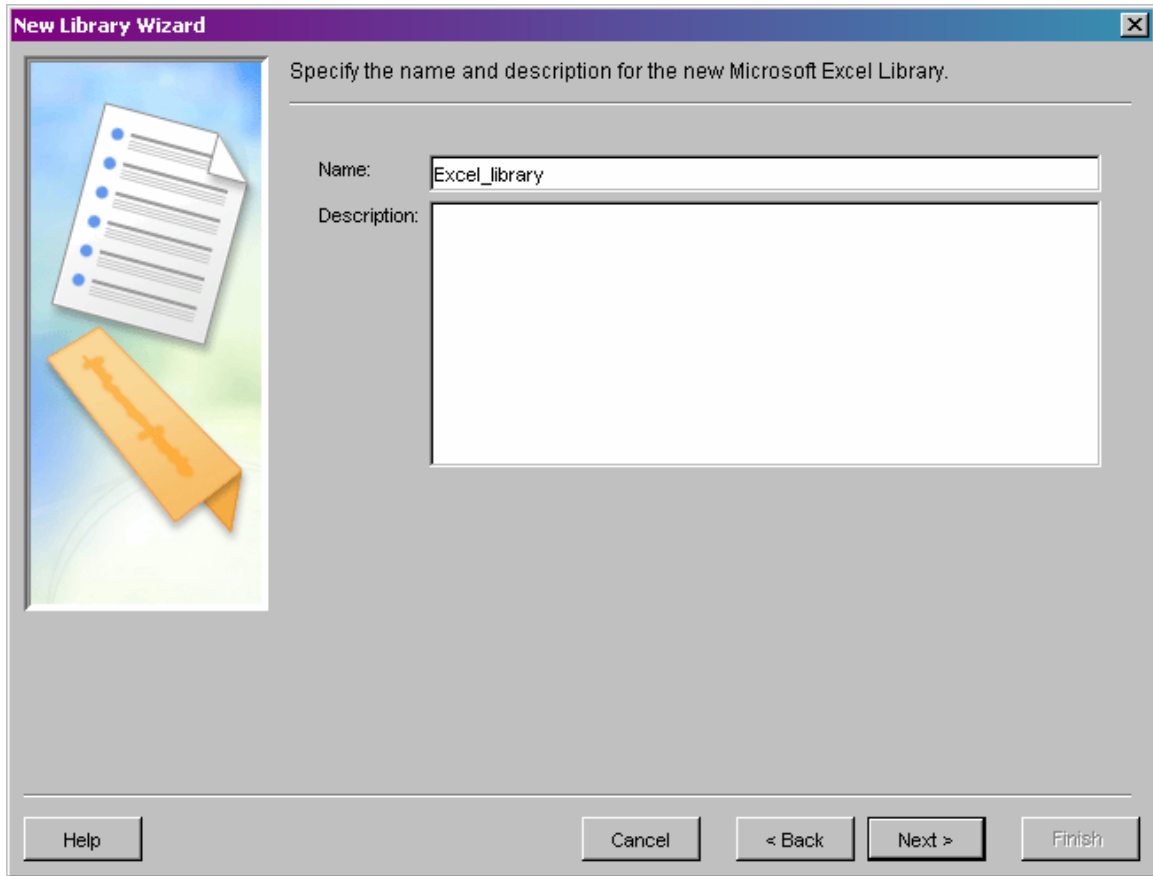
Make sure the new Authentication Domain is chosen and select 'Next'. Make sure the server has been defined correctly and select 'Finish'. The Excel server should now show up in the list of available servers.

2) Create a new Library:

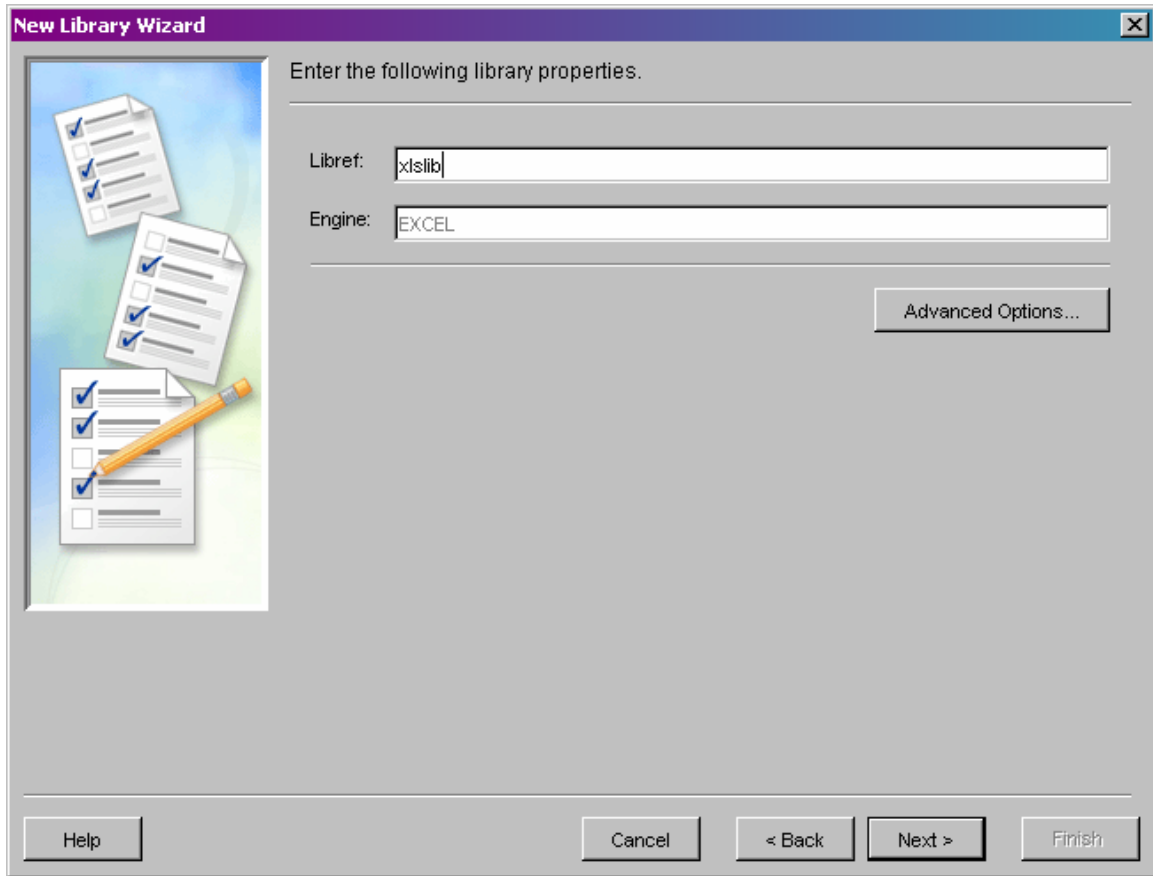
Under Data Library Manager, right-click on SAS Libraries and select 'New Library'. Choose 'Microsoft Excel Library' and select 'Next':



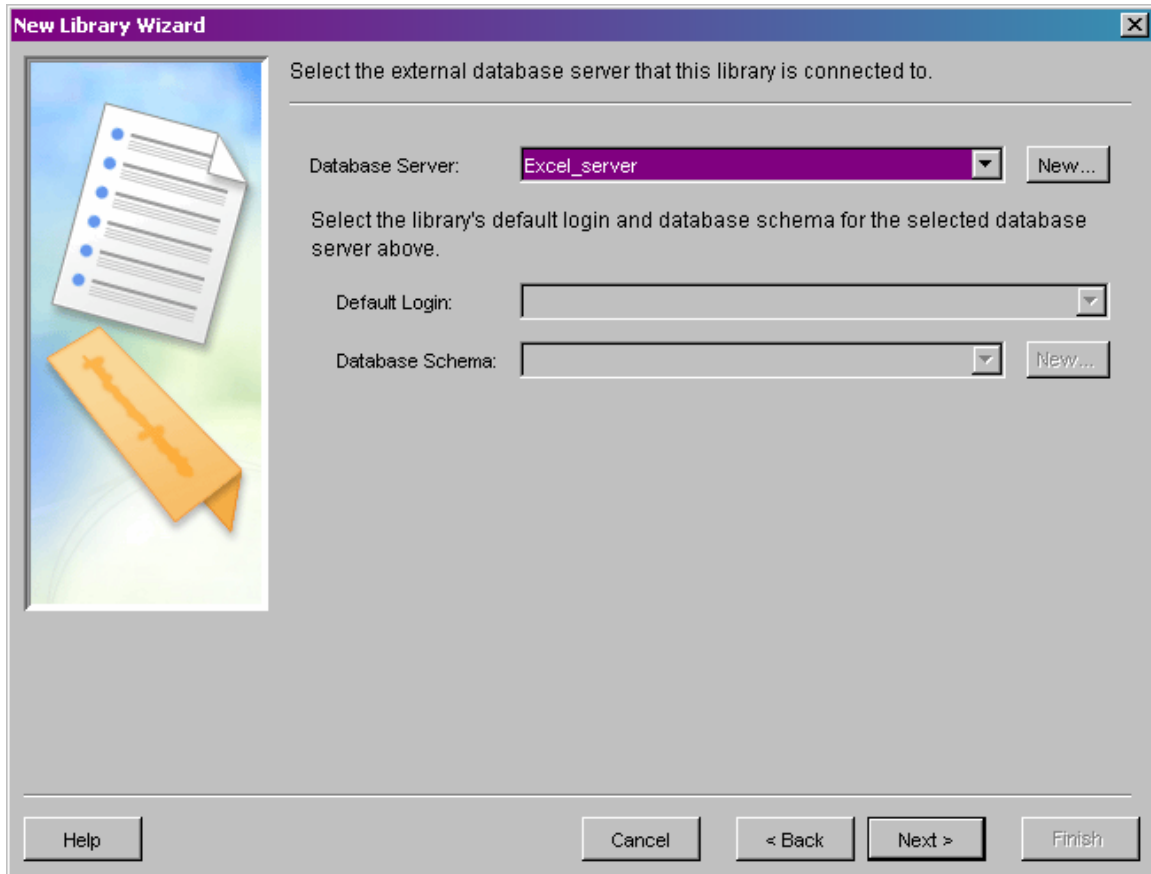
Enter a name for the Excel library and select 'Next':



Enter a libref for the Excel library and make sure the engine selected is Excel. Select 'Next':



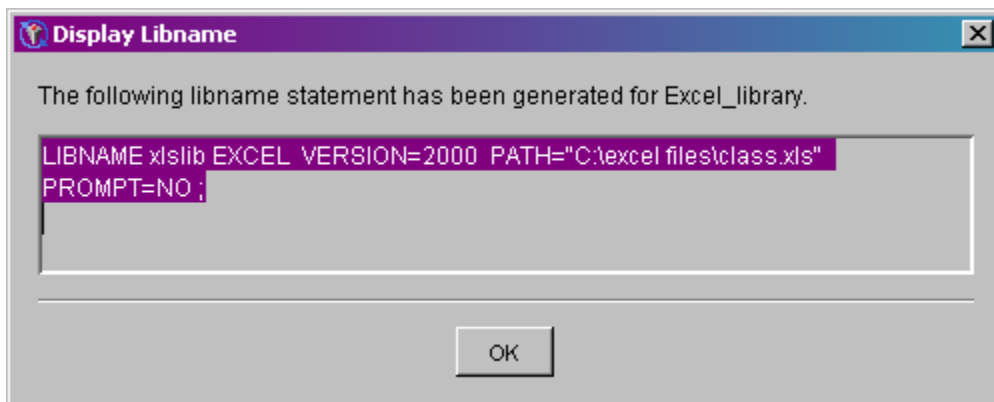
Make sure the server that you defined in the previous step is selected and select 'Next':



Choose SASMain as the server that the Library will be associated with and select 'Finish'. The new Excel library should be added to the list of available libraries.

3) Test the Libname statement:

Right-click on the new Excel library and choose 'Display Libname'. It should look similar to the following with NO userid or password:



Copy the LIBNAME statement and paste it into a Base SAS editor window, and submit the statement. The library should be successfully assigned:

```
113 LIBNAME xlslib EXCEL VERSION=2000 PATH="C:\excel
files\class.xls" PROMPT=NO ;
NOTE: Libref XLSLIB was successfully assigned as follows:
      Engine:          EXCEL
      Physical Name:  C:\excel files\class.xls
```

4) Import tables into the Management Console:

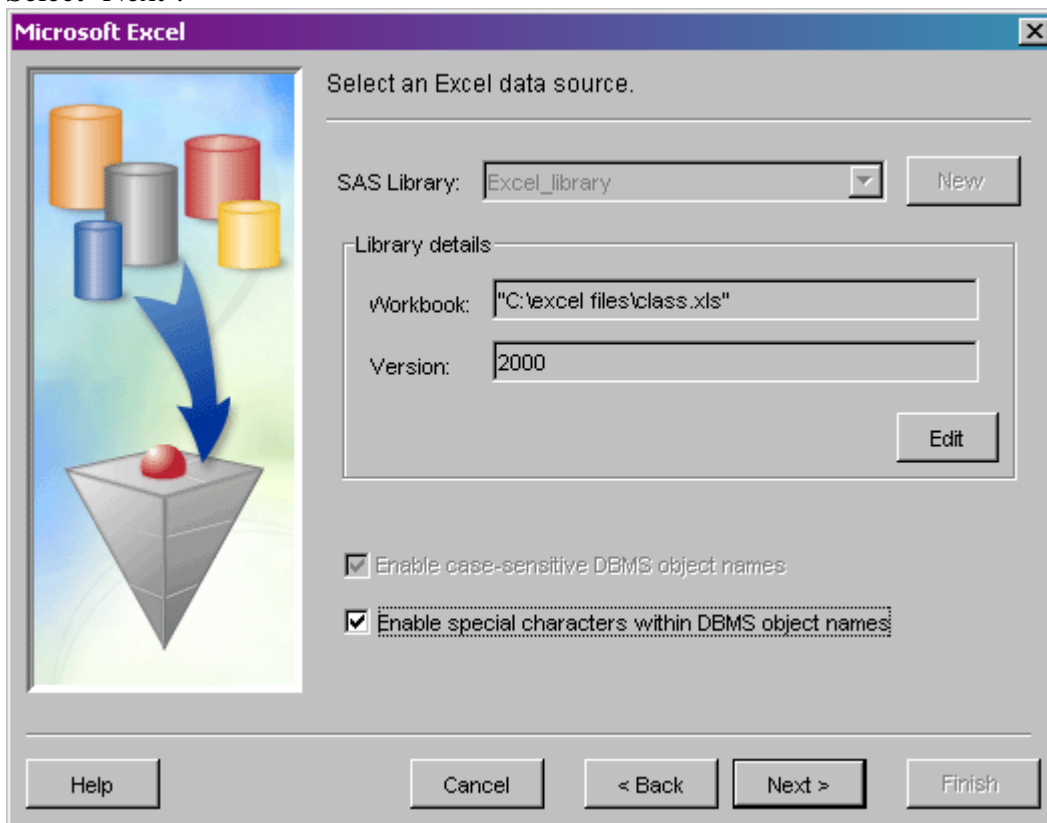
Log out of the Management Console as SASADM and log back in as SASDEMO:

Right-click on the new Excel library and choose 'Import Tables'. Choose SASMain as the server that contains the Excel file and select 'Next'.

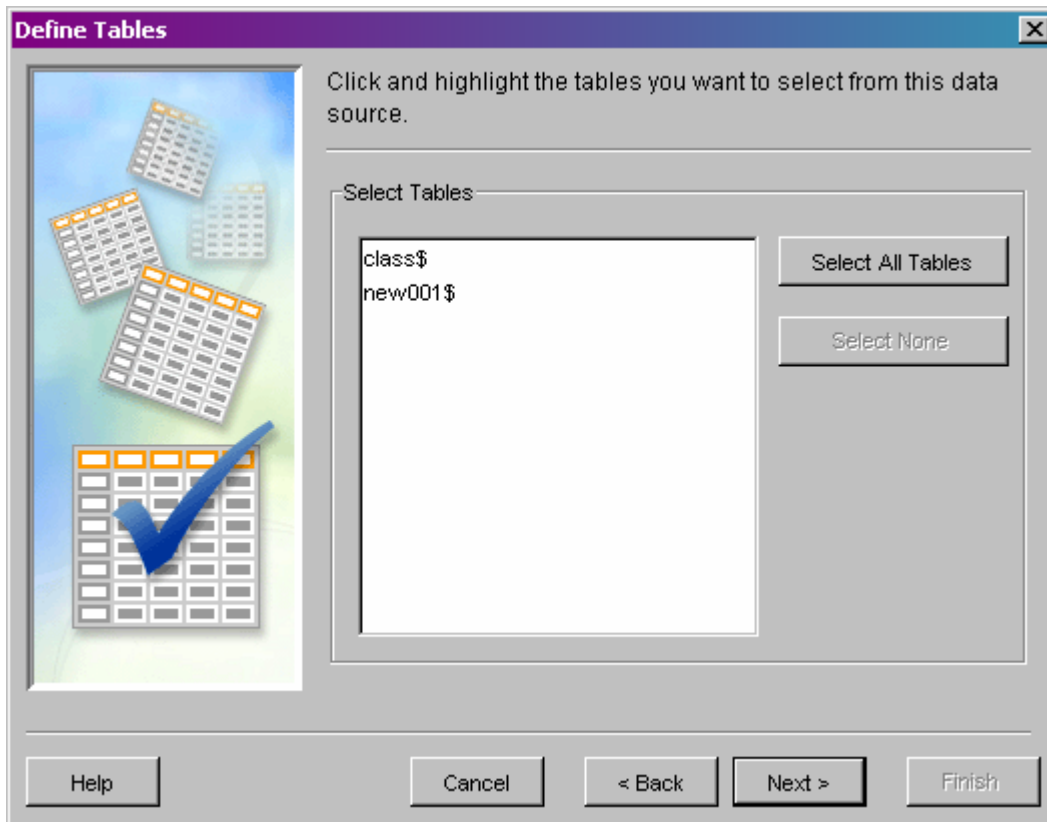
Make sure the correct Excel file is entered, and check the two boxes labeled:

- a) Enable case-sensitive DBMS object names.
- b) Enable special characters within DBMS object names.

Select 'Next':



Select the tables you want to import, select 'Next', and then 'Finish':



You should see the tables in the Management Console:

SAS Management Console - EntETLServer

File Edit View Actions Tools Roadmaps Help

Repository: Foundation

Name	Description
class\$	
new001\$	

SAS Management Console

- Environment Management
- Authorization Manager
- Data Library Manager
 - SAS Libraries
 - excel_oledb_library
 - MSAccess_Oledb_l
 - sqlserver_oledb_rta
 - Excel_library
 - Database Schemas
- Metadata Manager
- Schedule Manager
- Server Manager
 - SASMain
 - SASMain - Spawner
 - SASMain - Connect Spa
 - SASMain - SAS/SHARE
 - Job Scheduler
 - msaccess_oledb_serve
 - Excel_oledb_server
 - sqlserver_oledb_rtauth
 - Excel_server
- User Manager
- XMLMap Manager
- Monitoring
- Maintenance
 - License Manager
- Application Management

D11740\sasdemo as SAS Demo User

D11740.na.sas.com : 8561