

## Quick Install Guide for SAS 9.1 on Windows

By Sandy Gibbs

2/5/2004

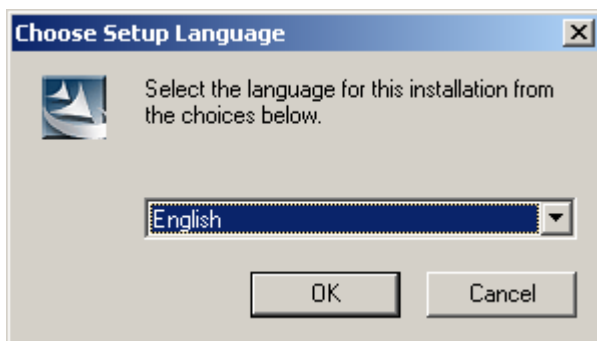
For our SAS Version 8 customers, SAS 9.1 Foundation used to be called The SAS System for Windows. We still have the SAS Setup CD but now we also have the SAS Software Navigator (SSN) CD. The reason we created the SSN is to take advantage of the platform independence that Java has to offer, which is what the SSN was written in.

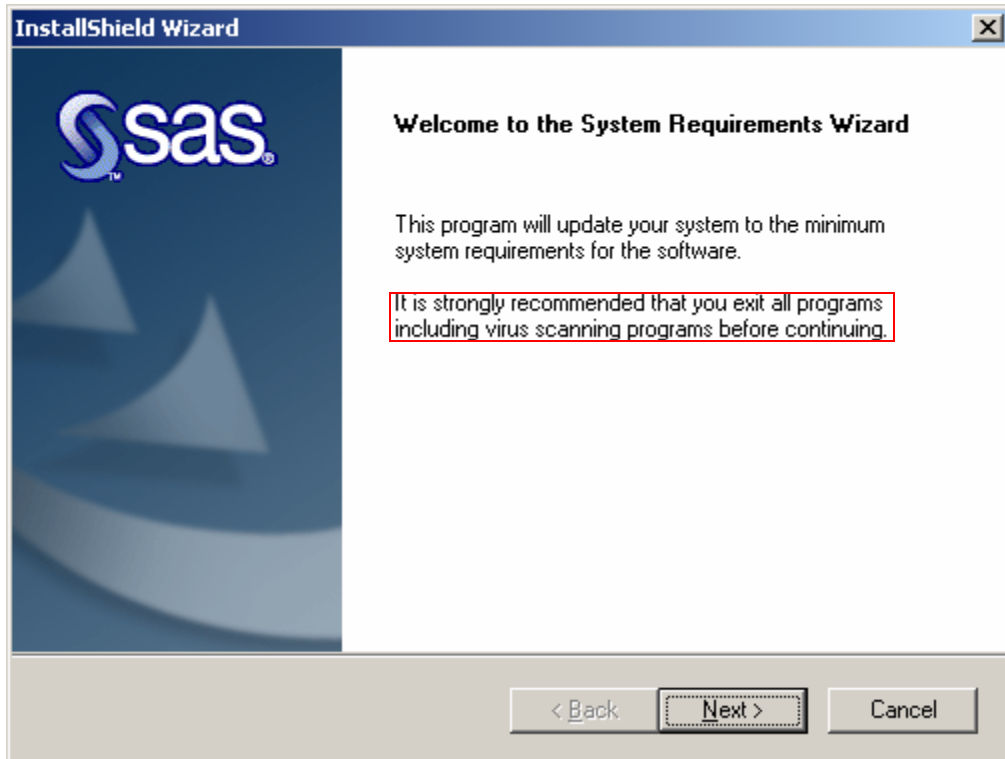
To install SAS 9.1 Foundation in its simplest form, you can bypass the SSN CD by just inserting the SAS Setup CD, and perform the following:

First run the System Requirements Wizard (SRW):

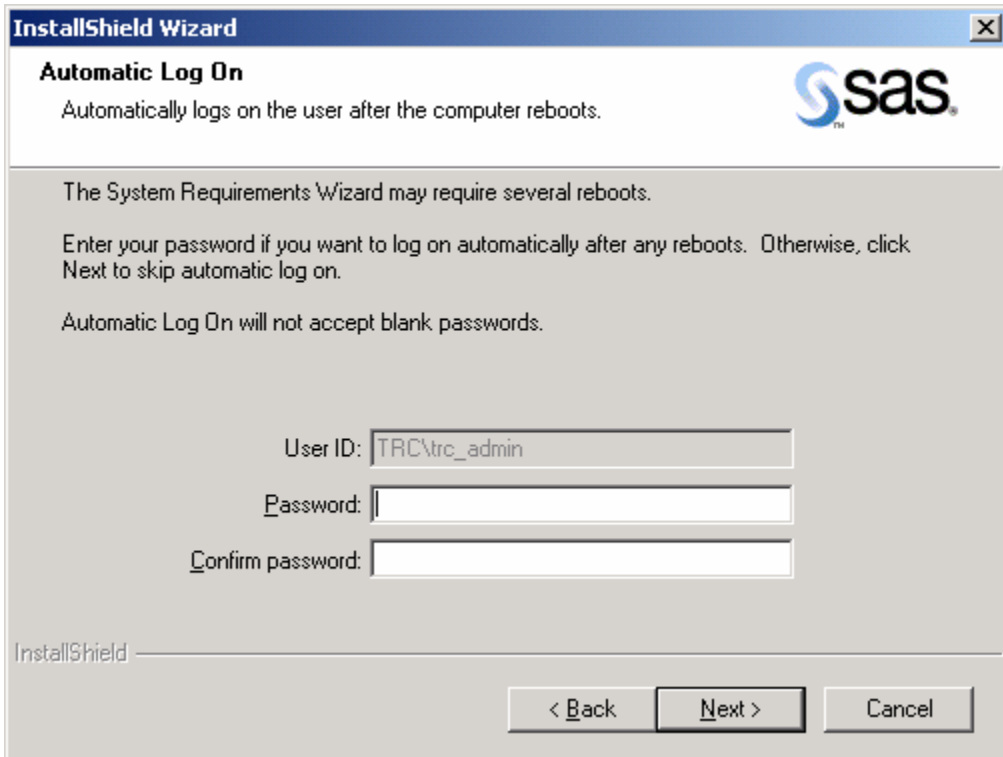
1. Find your SAS Setup CD located in the Media Storage Division (8) under Section 802 Server Media, in your SAS Installation Kit and load the CD.
2. When the SAS Software Navigator autorun comes up, close it by clicking on the X in the upper right-hand corner.
3. Click on Start>Run and browse to your CD-ROM drive.
4. Go to the */srw* folder and double click on *setup.exe*. \*\*\*It is very important that you click on setup in the */srw* folder or the SSN install will be launched.
5. This launches the System Requirement Wizard, please note the SRW install might require a reboot.
6. Select the *language* for the installation.
7. Click *Next* on the Welcome screen.
8. The SRW informs you which products it will be installing or lets you know if no updates are required.
9. Click *Next* or *Finish*.

Here are the typical screen shots of the System Requirements Wizard:

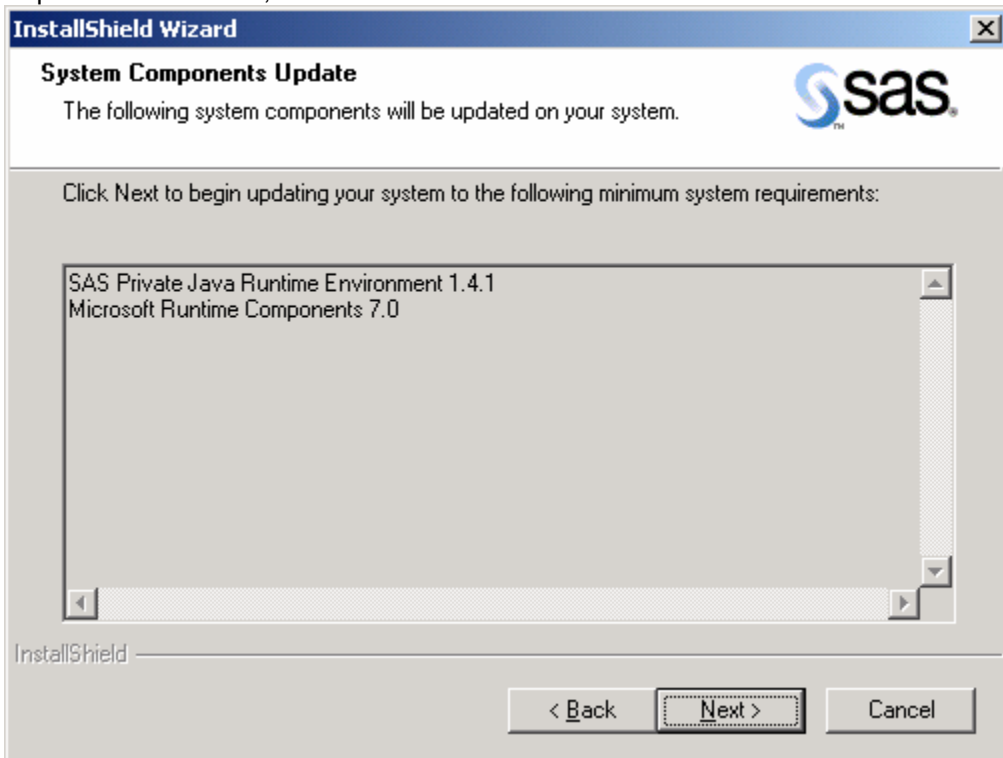




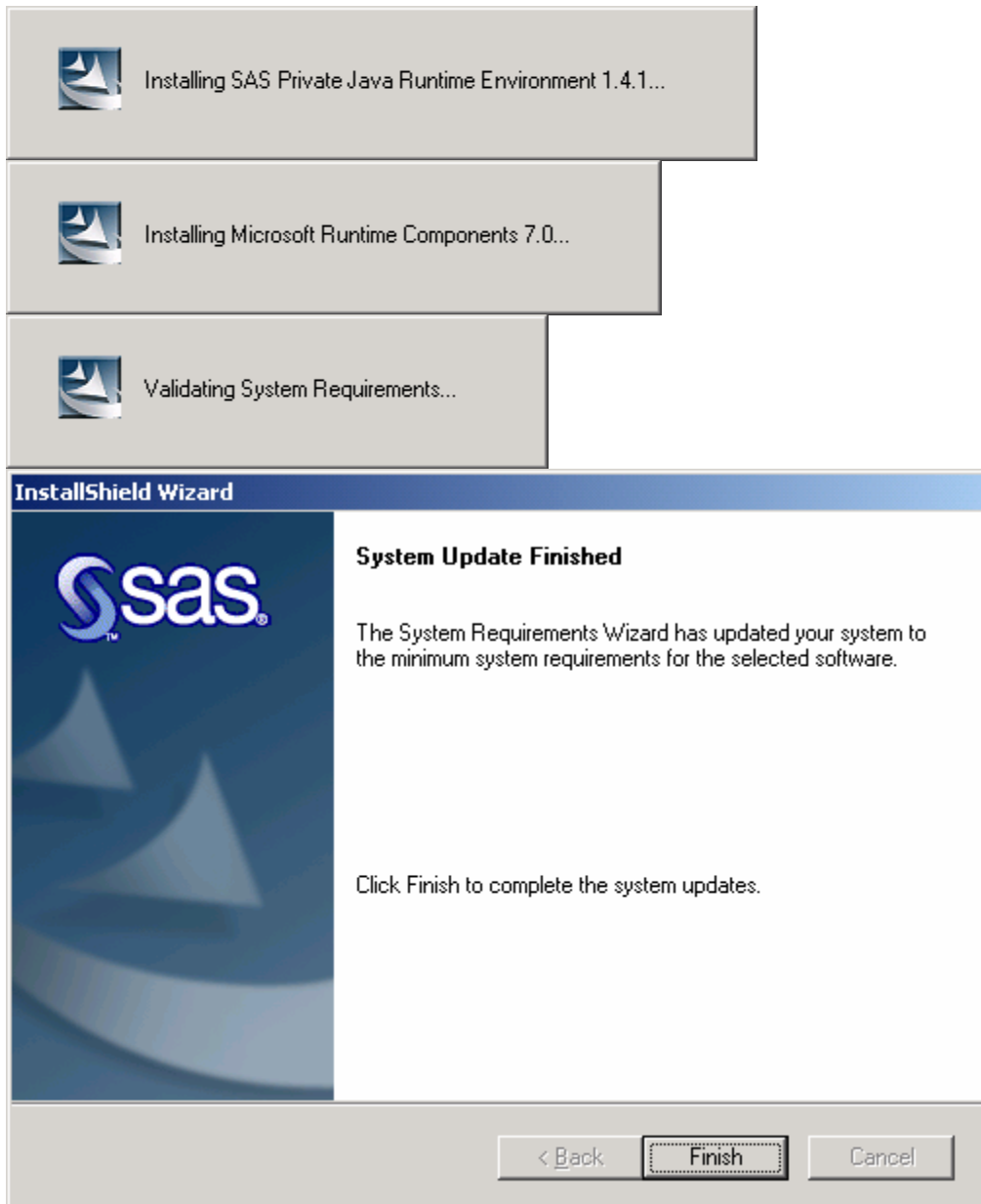
**\*\*Please note that it is very important during this installation that you are logged in as the Administrator and all programs are closed including Anti-Virus software. This includes software running in the background. To see if you have software running you can look for icons in the lower right-hand corner of your screen. Usually, you can highlight the icon, right click and it will display what the icon is for. Norton has a little mouse icon, if you highlight the icon, right click the available choices are listed, for instance File System Real-time Protection or Disconnect. If you are unable to make changes to your software (for instance the selections are grayed out), try stopping the Anti-Virus software under Services. Services is located under the Control Panel. On WinXP and Win2000 this is under Control Panel>Administrative Tools> Services. On WinNT this is located under Control Panel> Services.**



This screen allows you to automatically log on if the installation asks for a reboot. This is not required. To continue, click *Next*.



This screen displays the system components that need to be updated on your system in order for SAS to run properly. Click *Next*.



If a reboot message is not received, then it is not required at this point. Click *Finish*.



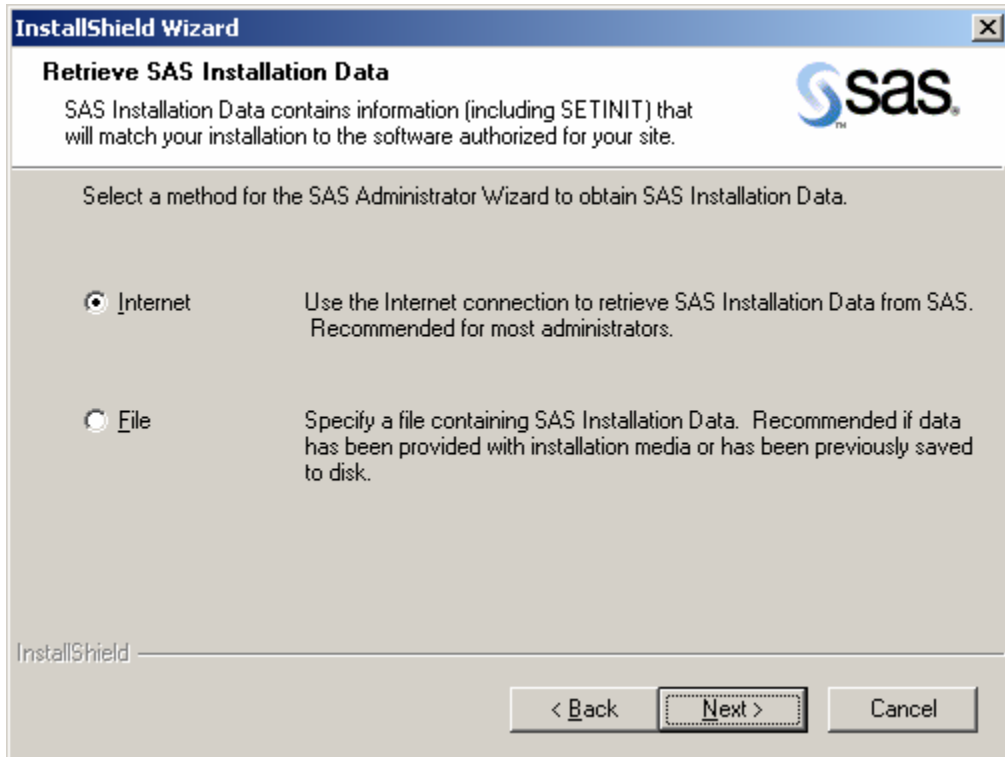
This screen is displayed when you run the System Requirements Wizard and the updates have already been applied. Click *Finish*.

After the SRW had been run then you can perform your SAS 9.1 Installation.

1. Using the same SAS Setup CD click on Start>Run> and browse to your CD-ROM drive.
2. Go to the /sas folder and double click on *setup.exe*. \*\*\*It is very important that you click on setup in the /sas folder or the SSN will be launched.
3. Click *Next* on the Welcome screen.
4. Retrieve your SAS Installation Data file from the Internet or from a File.

The SAS Installation Data (SID) is sent to your SAS Installation Representative in the SAS Installation Kit; under the SAS Order Information tab on the SAS Order Information page. There is also an email that contains the SAS Order Information with an attached text file.

The email title is SAS Software Order xxxxxx and contains an attachment file called sas91\_ xxxxxx.txt. The email includes not only the text file but also the SAS Installation Key and the Order Number. You can use the .txt file to update the SAS Installation Data by selecting File from the installation screen. Or you can select Internet and enter the SAS Installation Key and the Order number. This method retrieves the latest SID from the Internet and applies it to your SAS install.



If you select *Internet*, click *Next*.

A Security Warning Box pops up – click *Yes* to continue. If you select *No* on the Security Warning Box the following screen is displayed. Click *OK*. Make sure you select *Yes* the next time.



Type in your SAS Installation Key and the Order number. Then make sure you check *Save a copy of SAS Installation Data to Disk*. Note the location or click *Browse* and select another location to store your SID and click *Next*. This is how the screen appears for the Internet selection:

**InstallShield Wizard**

**Retrieve SAS Installation Data from the Internet**

To download SAS Installation Data, enter the SAS Installation Key and Order Number as presented in either the Transmittal Letter or the SAS Software Order e-mail.

SAS Installation Key:  -  -

Order Number:

Save a copy of SAS Installation Data to disk

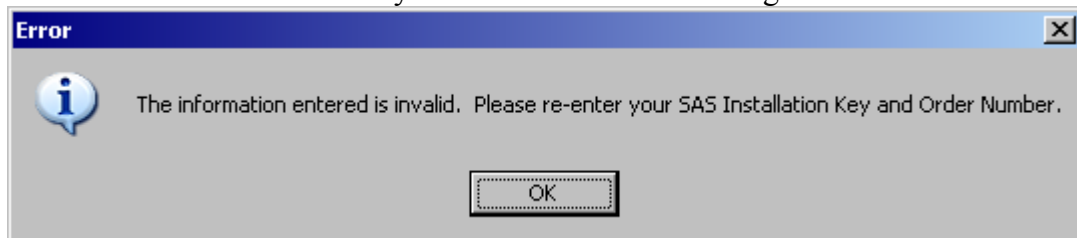
Select folder to save SAS Installation Data

C:\Documents and Settings\saszs\My Documents\SAS Installation

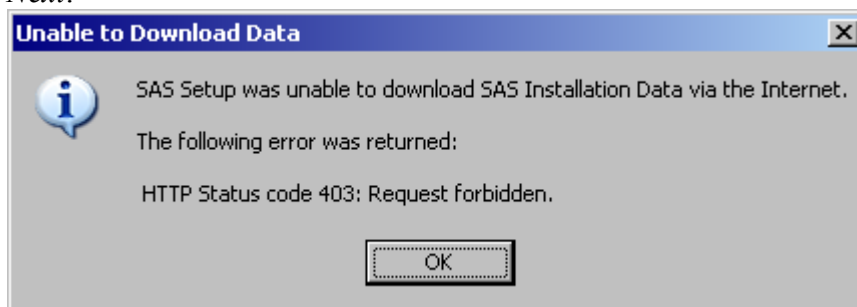
Exit after saving

InstallShield

If the information is incorrect you will receive the following error:



Click *OK* and re-enter the SAS Installation Key and the Order Number and press *Next*.



If you are unable to download the SID this screen is received. Contact your SAS Installation Representative to obtain the SAS Installation Data file. Run the installation again and select File instead of Internet.

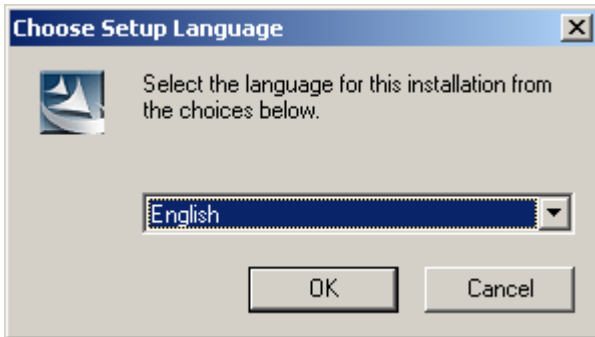
Once this has completed correctly, continue with your installation.

If you are still having trouble with the SID information, go to one of the following links to request the SAS Installation Data be resent via email:

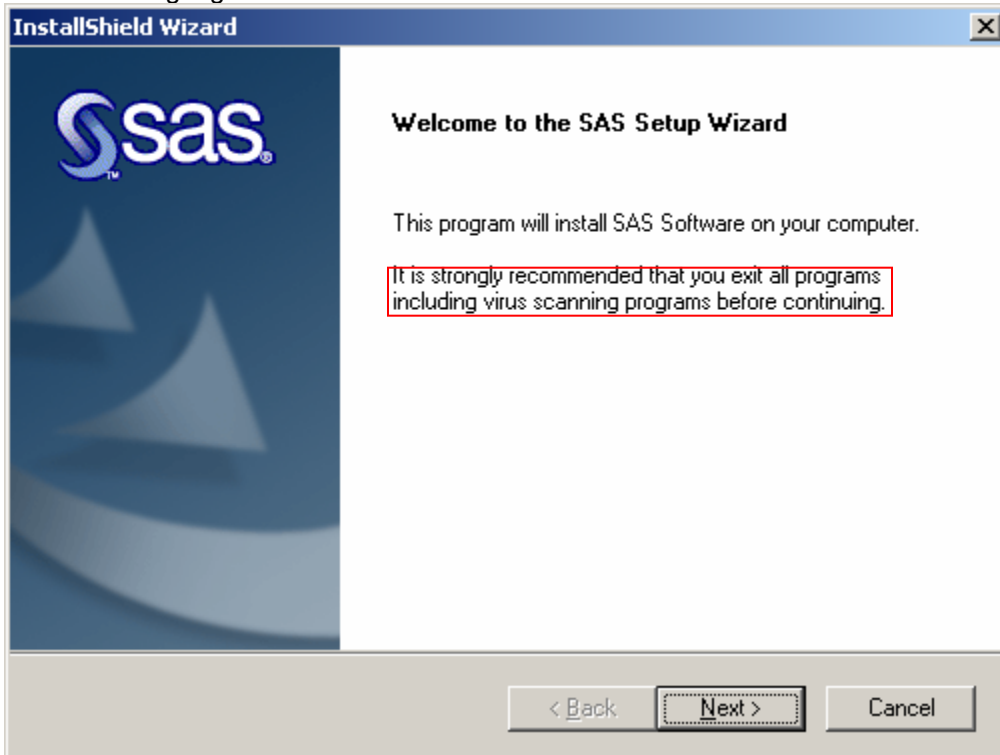
[https://www3.sas.com/apps/cpi/admincenter\\_checkoptions.jsp?\\_admin\\_option=RsndSID](https://www3.sas.com/apps/cpi/admincenter_checkoptions.jsp?_admin_option=RsndSID)

<http://support.sas.com/documentation/installcenter/>

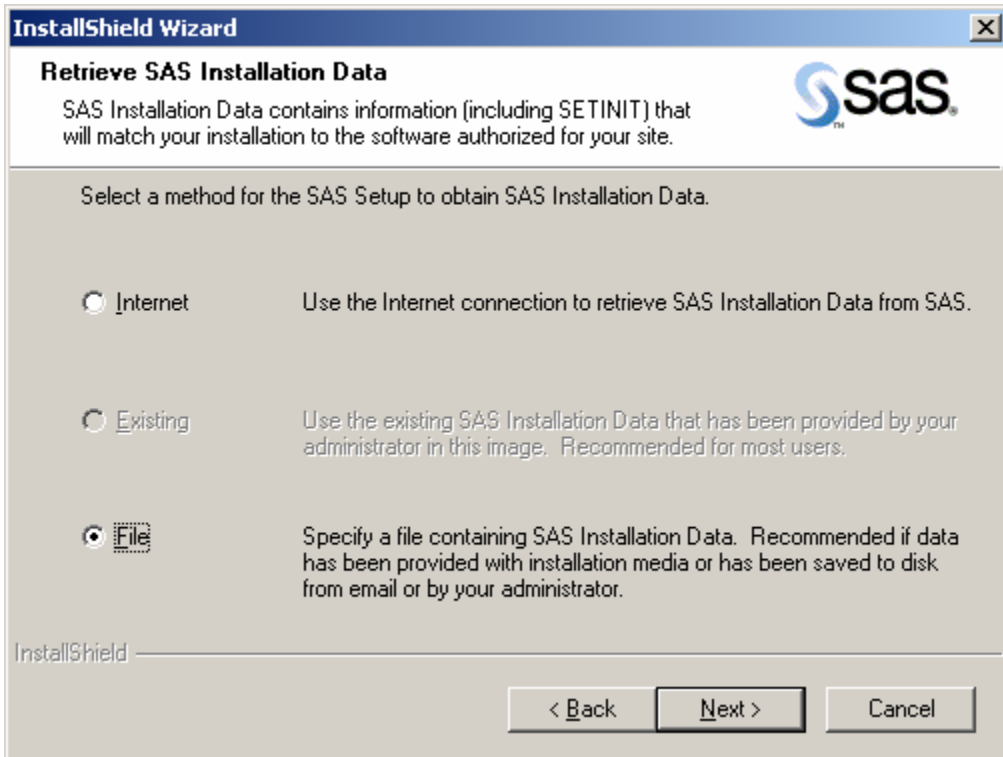
Here are the screen shots of a SAS 9.1 Personal Installation using the SAS System Setup and selecting the *File* method to retrieve the SAS Installation Data file:



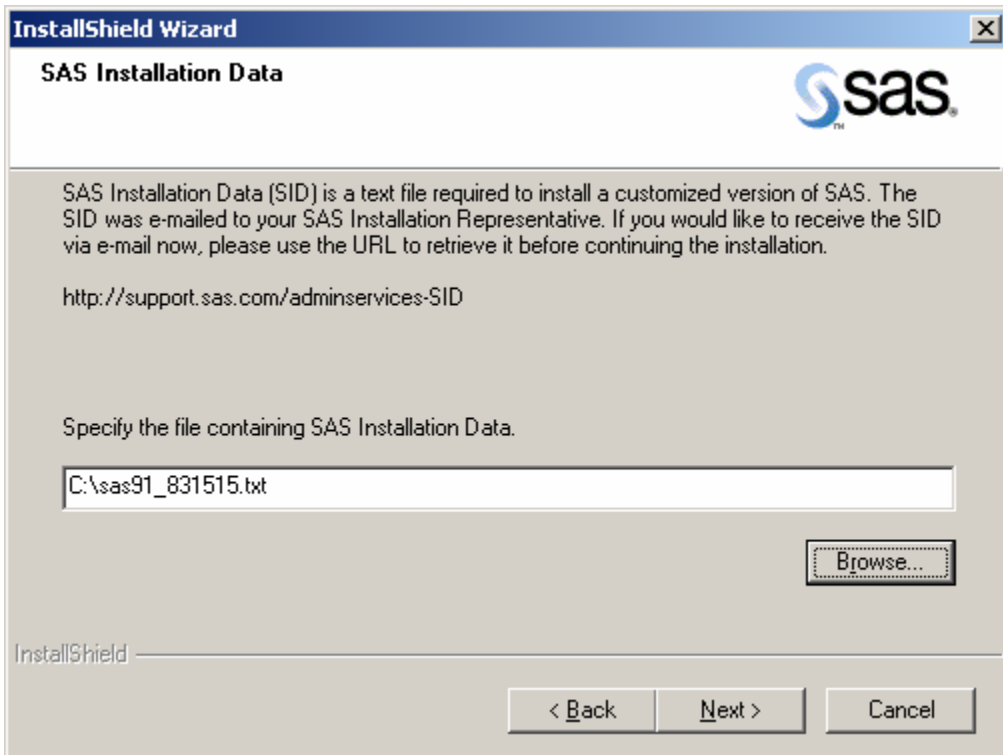
Select the language for the installation and click *OK*.



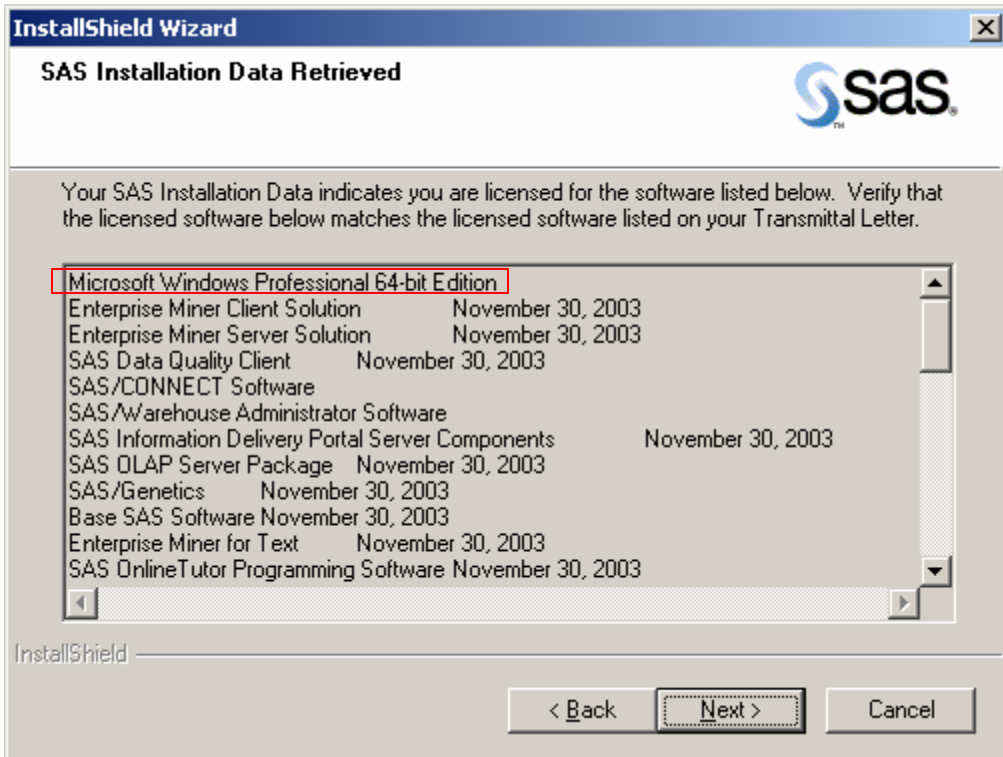
Click *Next*.



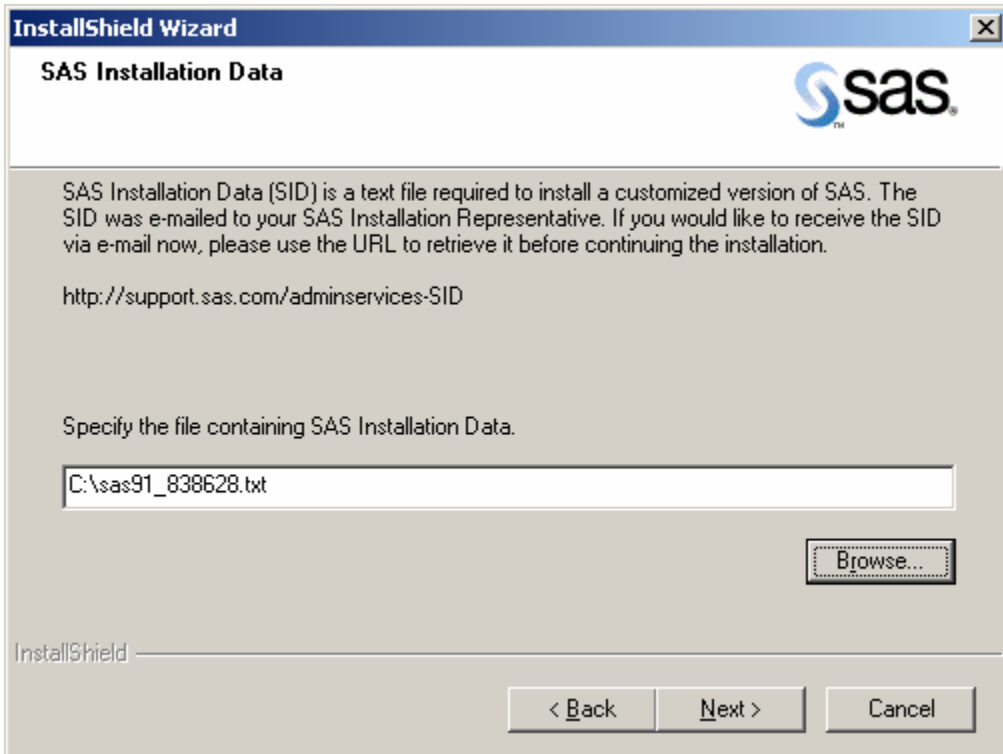
Internet is the default so select *File* and click *Next*.



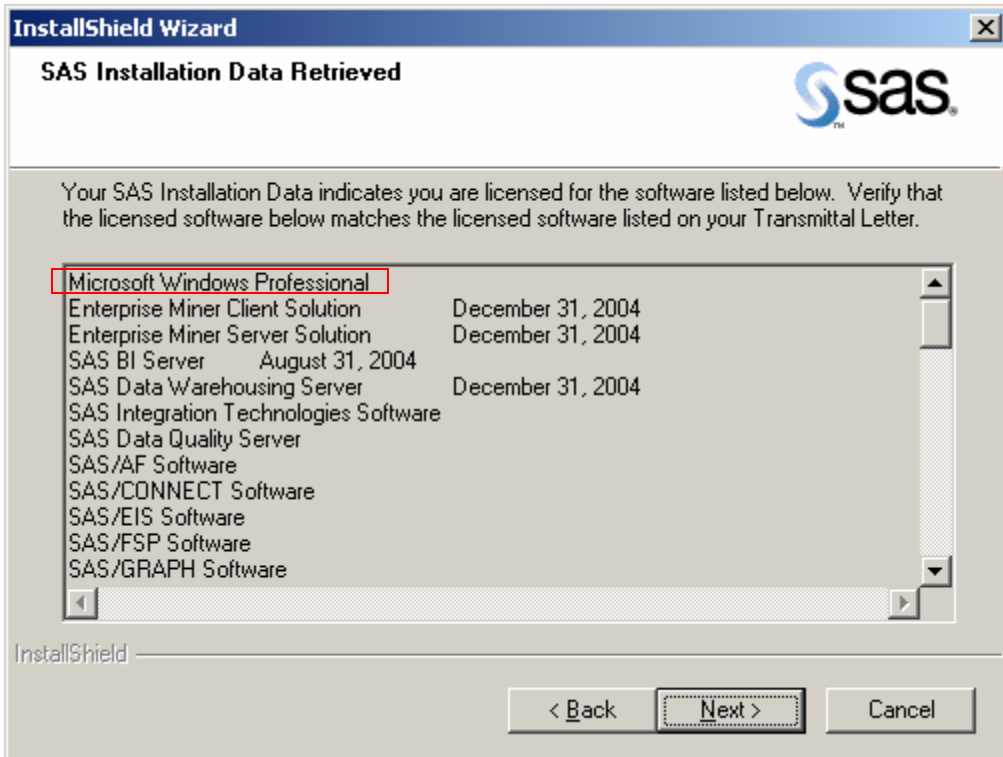
Click *Browse*; specify the file containing the SAS Installation Data and click *Next*.



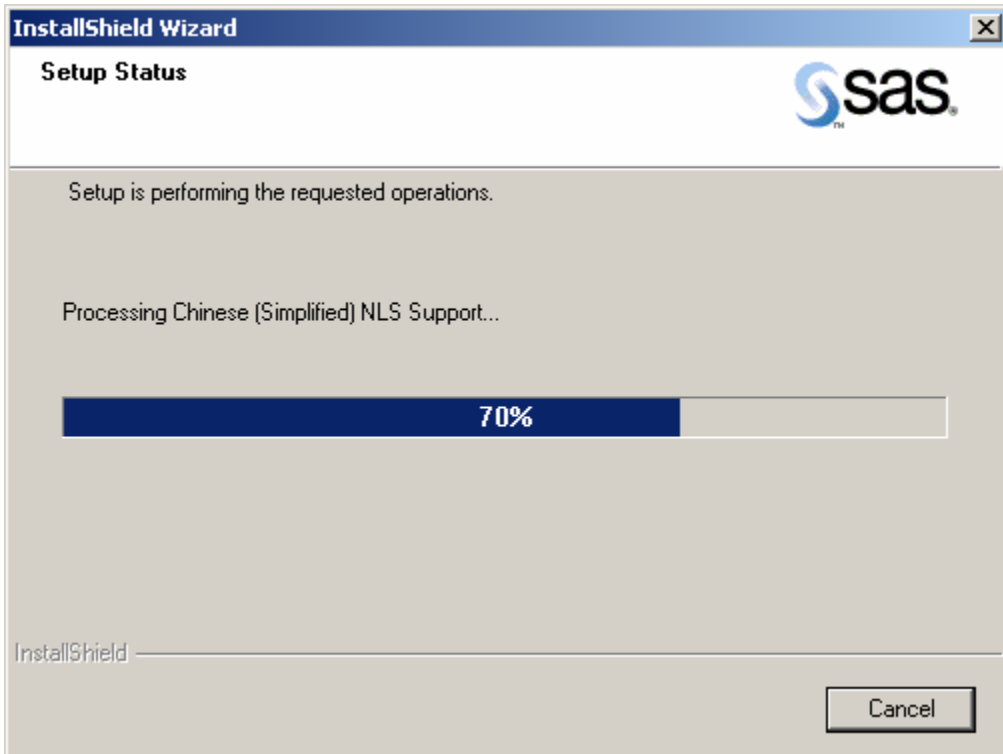
In this example, the operating system (stated at the top of the window) is Microsoft Windows Professional 64-bit Edition. This SID will not work on a 32-bit Windows Workstation. Click *Back* to select the correct SID and click *Next*.



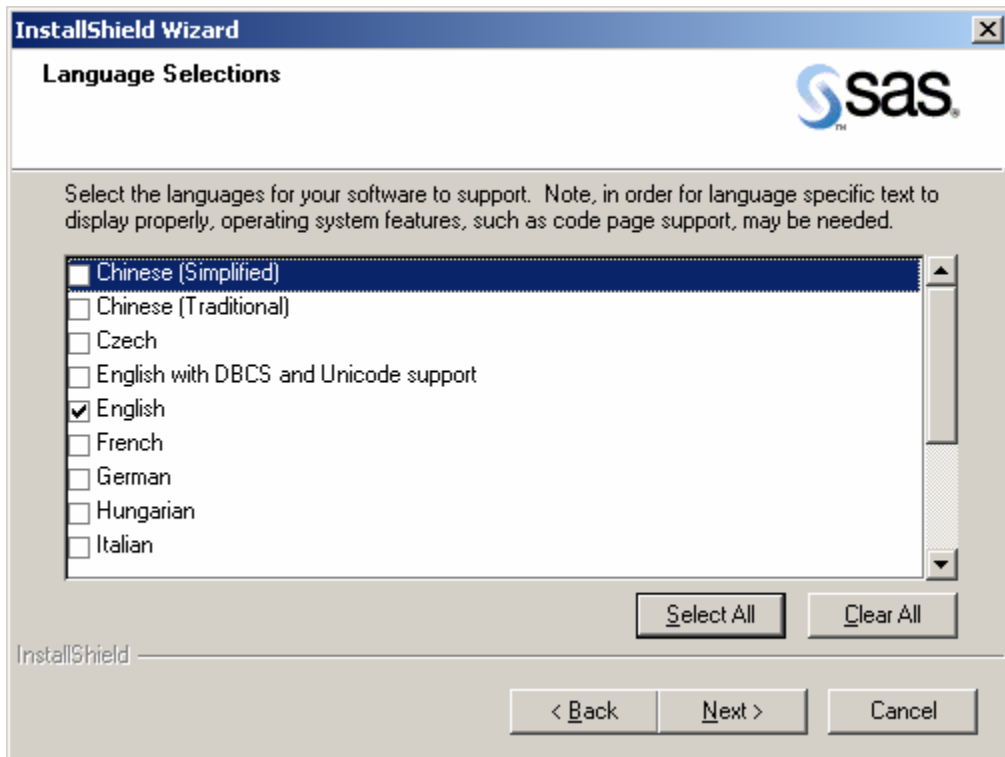
Click *Browse* then specify the file containing the SAS Installation Data and click *Next*.



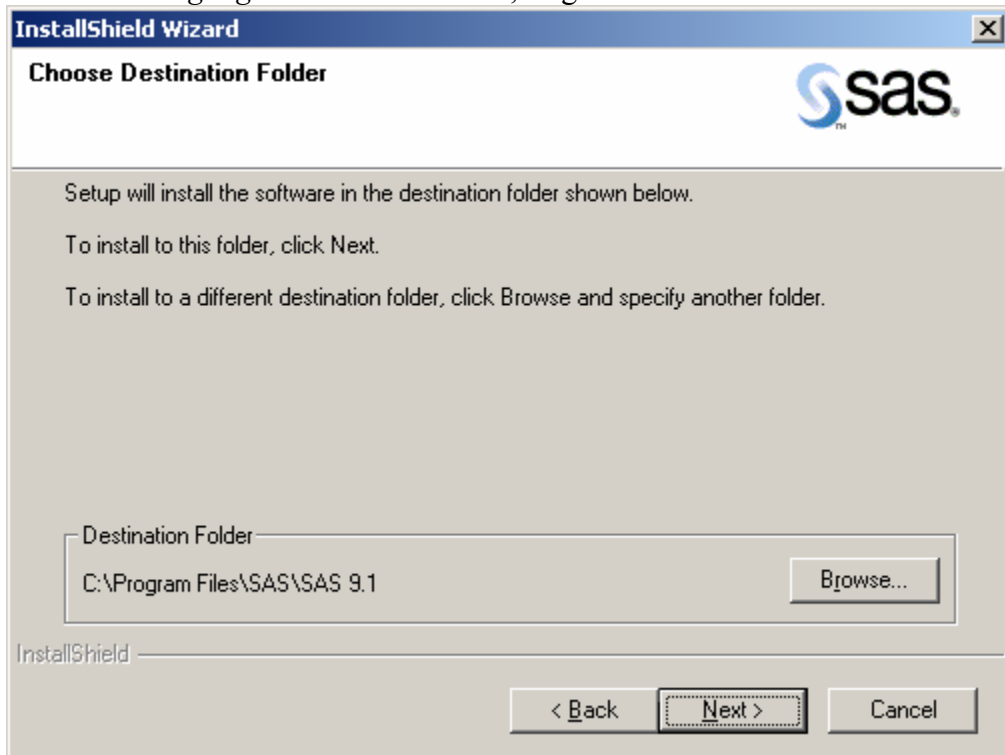
Click *Next* once you've verified the information. In this example you can see that this is for a 32-bit operating system by looking at the top line in the window, Microsoft Windows Professional. Click *Next* to continue.



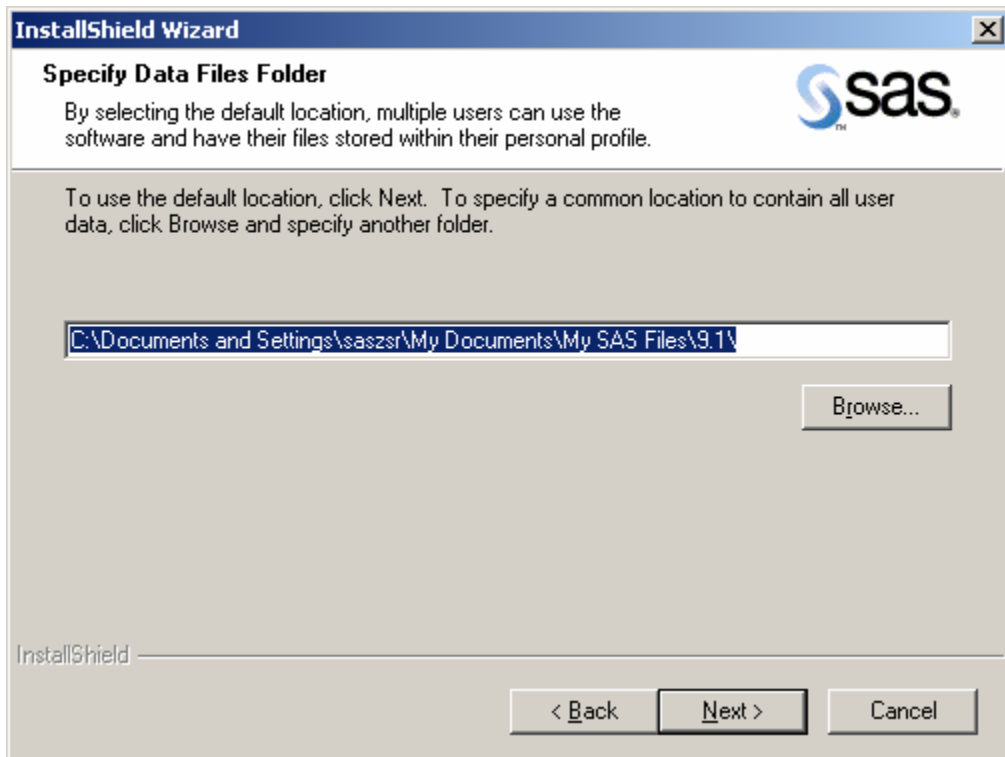
In this screen the setup is processing the provided information.



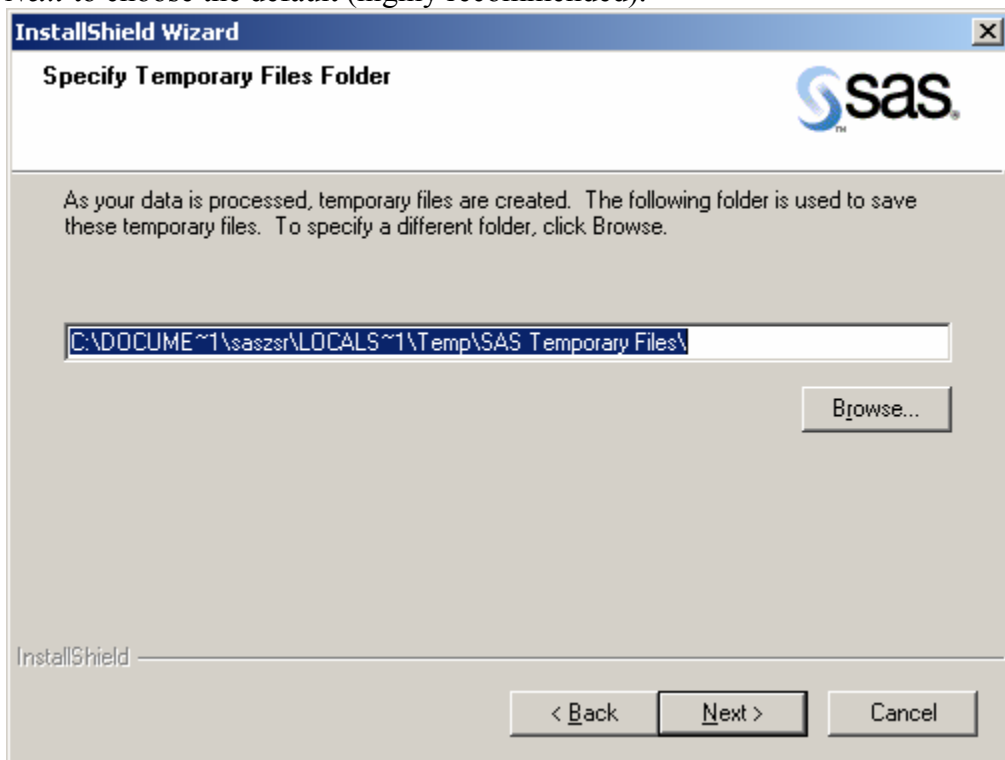
Select the *Language* for the installation, English is the default. Click *Next*.



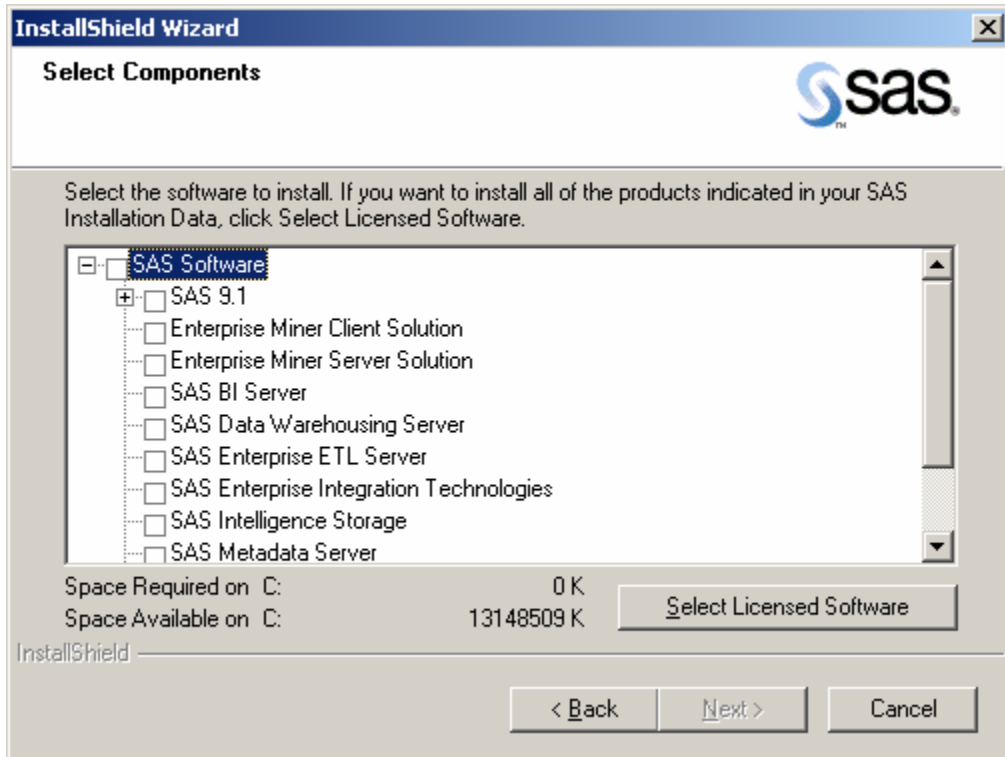
This screen allows you to specify where SAS 9.1 will be installed. Click *Next* to choose the default (highly recommended).



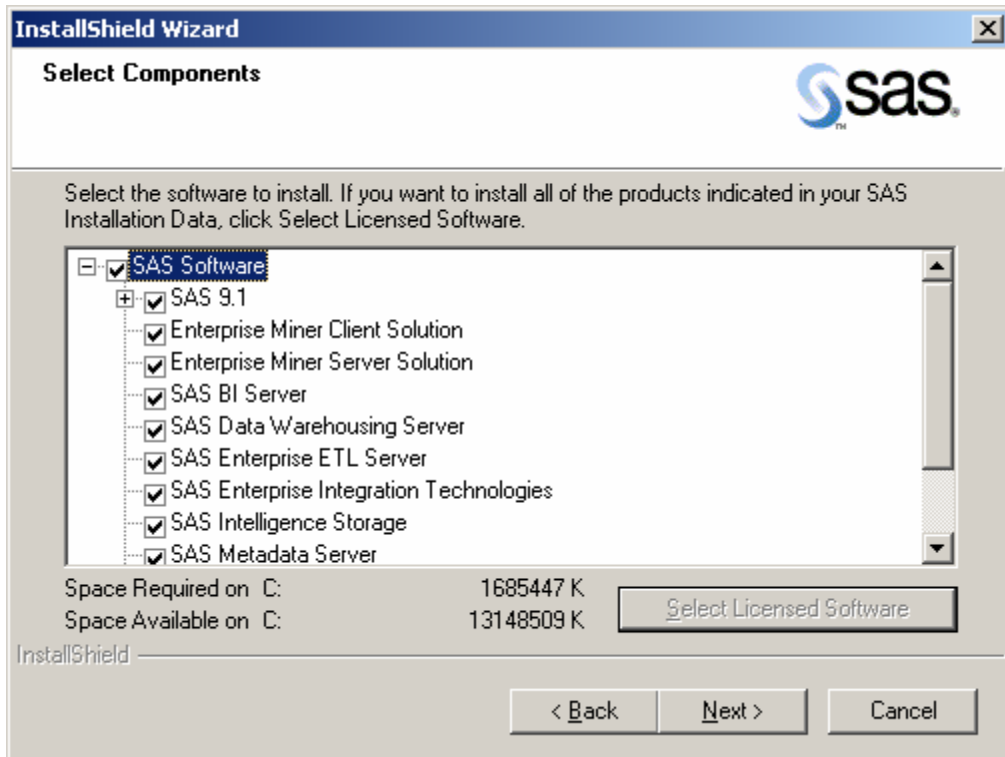
This screen allows you to specify where the Data Files folder will be installed. Click *Next* to choose the default (highly recommended).



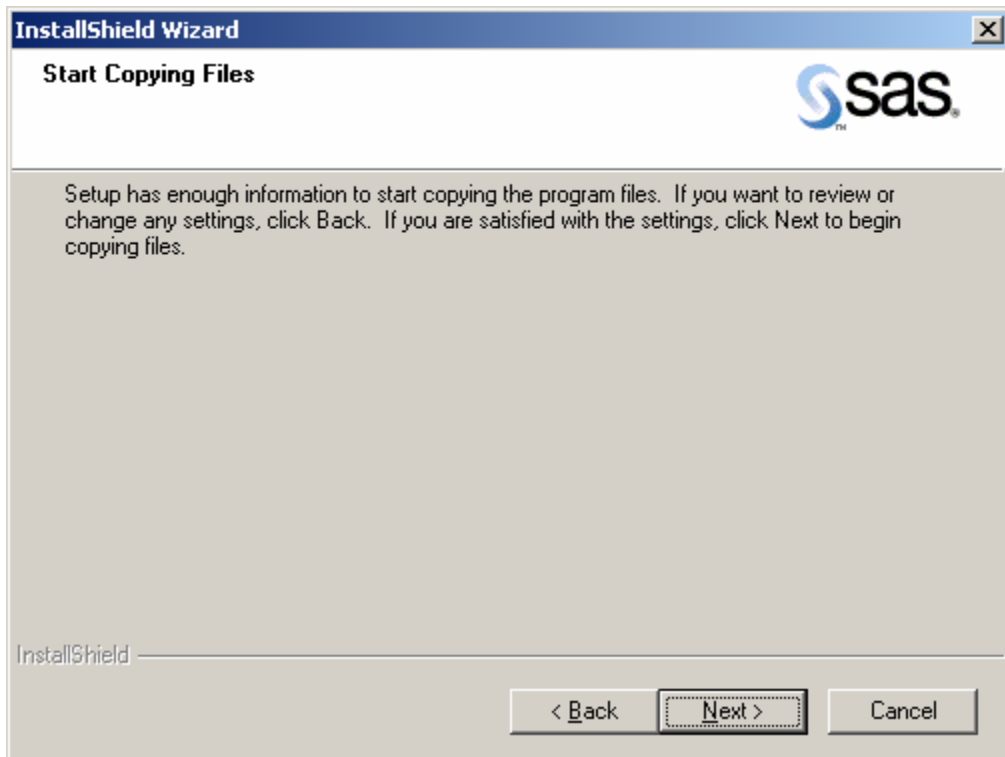
This screen allows you to specify where SAS 9.1 will install the Temporary Files folder. Click *Next* to use the default (highly recommended).



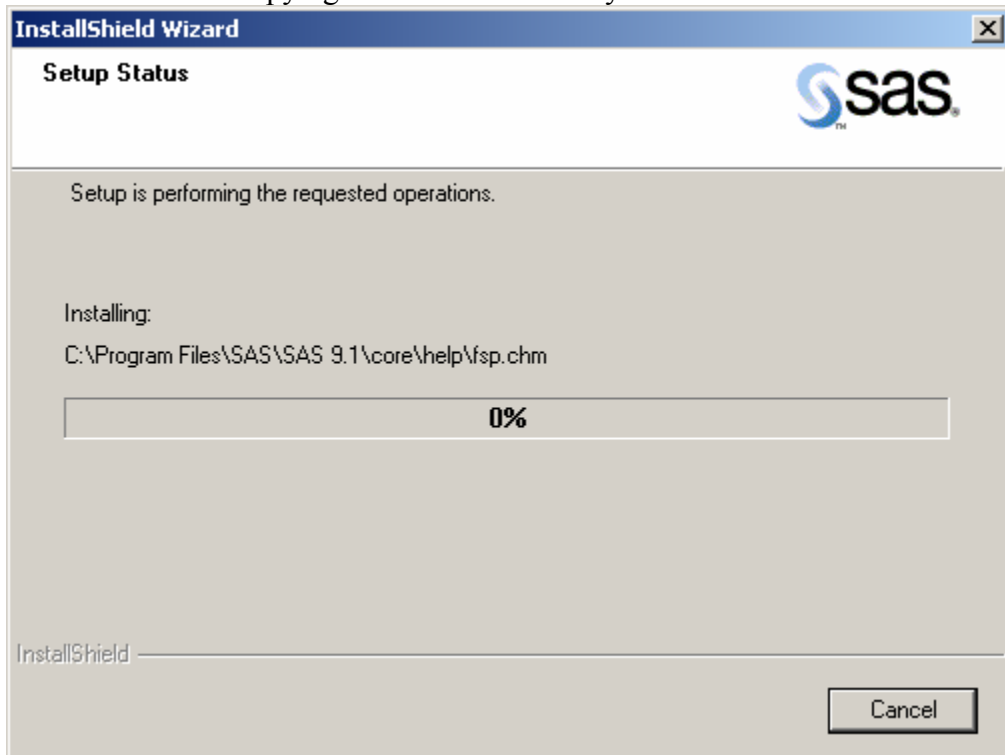
This screen allows you to specify what SAS products you want installed. Click *Select Licensed Software* if you are not sure what products need to be installed; this only installs the software products you have licensed. Or you can manually check the products you want installed. Click *Next*.



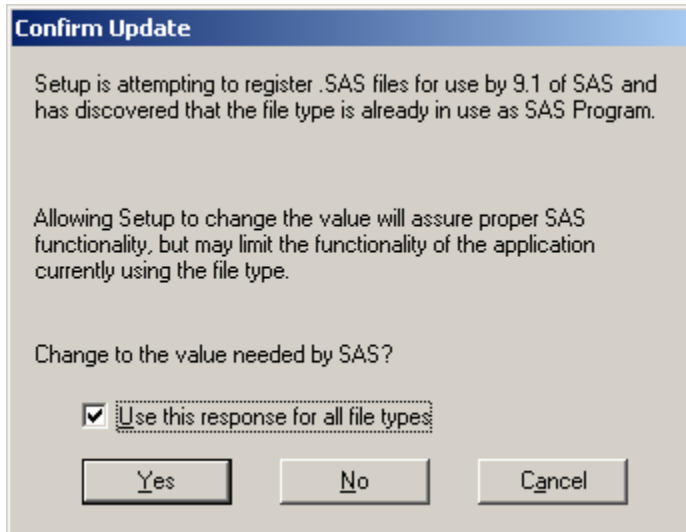
In this screen the *Select Licensed Software* was selected.



This screen starts copying the SAS 9.1 files to your hard drive. Click *Next*.



The screen provides you with the Setup Status. You can end the install at any time by clicking on *Cancel*.



This screen registers the file types to SAS 9.1. To avoid being prompted for each file type, check *Use this response for all file types*. Click *Yes* to continue.



Click *Finish* to complete the installation. You can also choose to check *View Post-Installation Documentation* and/or *Run SAS now*.