

## How to Add On a Product to an Existing Installation of SAS

This paper will show an example of how to perform a product add-on to an existing installation of SAS 8.2 on Windows.

When an existing SAS customer licenses a new product, we ship them a new media packet with all of the products they are licensed for. The example below will illustrate an example of a typical situation where a customer has added a new product to their licensing agreement and now desires to add that product to their existing install.

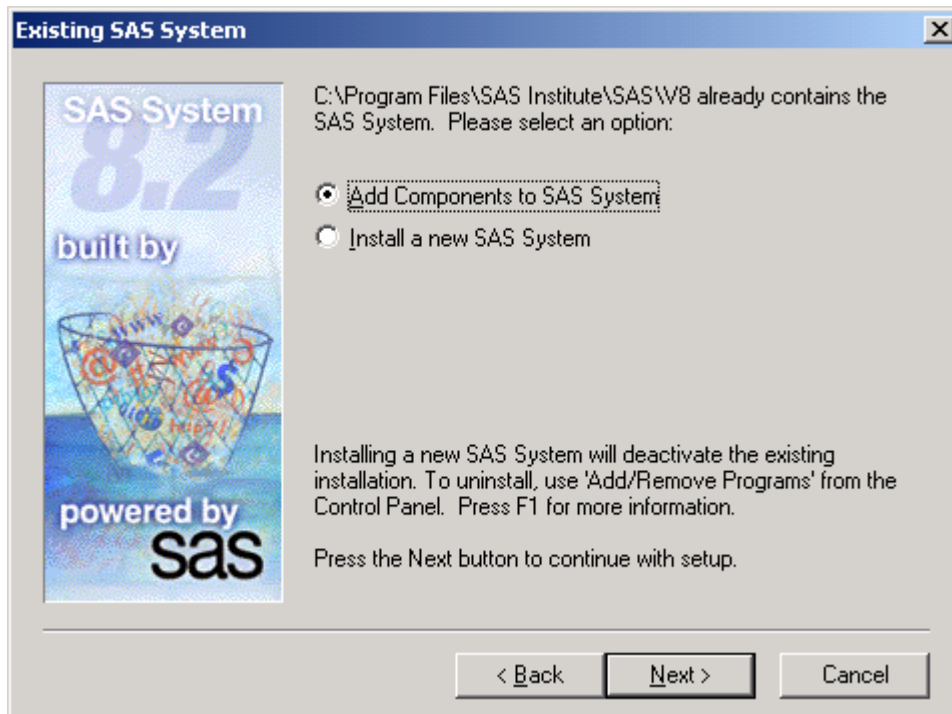
Let's assume your company currently has Base SAS, Stat and Graph licensed and installed. You have recently learned of a product called Access to PC File Formats which allows the importation and exportation of files like MS-Excel, MS-Access dB, etc. Your company has lots of MS-Excel files and desires the ability to import these files directly into SAS and create SAS data sets. You can also export your SAS data sets directly to MS-Excel files with this product.

Your company's site rep has contacted the Contracts department at SAS and has done all of the paperwork that needs to take place to have this product added to their license. The license file in SAS 8.2 is known as the setinit.sss file. Now that there is a new setinit, we ship an entirely new 8.2 media packet to the customer.

You have now received the new media packet. Now what? Using the new media, you will start an install just like you did when you installed SAS previously. This time however you will choose to do a Custom install. This will allow you to add-on the Access to PC File Formats product. The new setup disk contains the file for this add-on product, pfile.ini, which was not present on the initial setup disk.

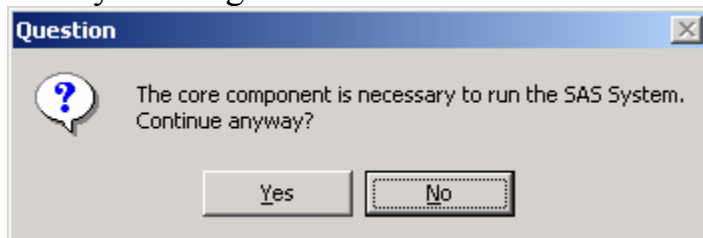
Here are instructions and a few screenshots below showing you how to do the product add-on.

- 1) Put in the setup cd and then you get the initial install screen
- 2) Click on SAS System Setup
- 3) At the Welcome screen, click Next
- 4) At the Select Setup Type screen, choose Custom, then click Next
- 5) At the Existing SAS System screen, choose to Add Components to SAS System, click Next



- 6) Continue on with the install now through several screens and you can usually just take the defaults by clicking on Next
- 7) At the Solutions screen, if there are any solutions listed, de-select those or click on Clear All (Note: In some cases, it is necessary to leave Academic or Enterprise Computing Offer checked if either is listed)
- 8) Then click on the Customize button in the lower left corner
- 9) At the Custom Installation screen, click Unselect All
- 10) Then scroll down the list and select SAS/Access Interface to PC File Formats and click Next

Then you will get a screen like this:

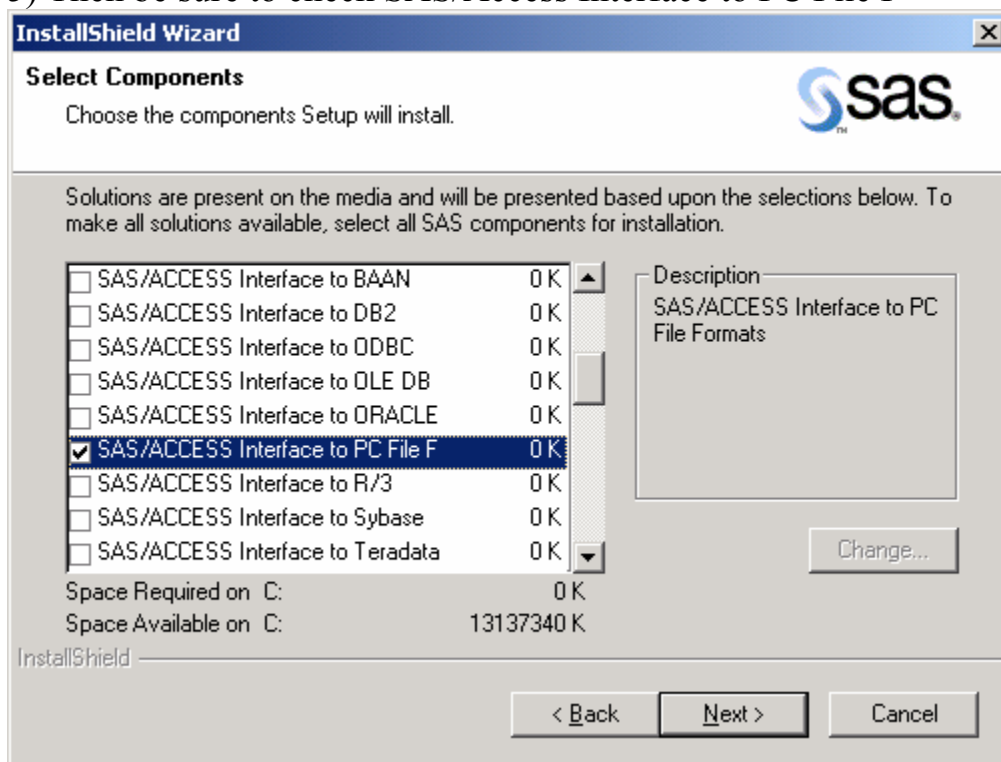


- 11) Click Yes to continue (the core component is already installed)
  - 12) Then click Next again and follow through with the install and supply whatever disks the install asks for...remember to let the cd spin up for a moment before clicking OK
  - 13) The install will complete at the SAS System Setup Complete screen
  - 14) Click Finish
- That completes the product add-on.

The above example illustrated how to add a product to an existing installation of SAS 8.2 on Windows. If you are an administrator and have an image of SAS on your server and desire to add the new product to the existing image, use the following example.

Its done in the same manner as in the example in this paper except you will be using the SAS Administrator Wizard.

- 1) Put in the setup disk and start the SAS Administrator Wizard
- 2) Click Next on the Welcome screen
- 3) Then select the location of your current SAS image and click Next
- 4) At the Select Components screen, unselect everything
- 5) Then be sure to check SAS/Access Interface to PC File F



- 6) Click Next and proceed
- 7) Click Next again on Start Copying Files
- 8) Supply the installer with the disks that it asks for through the rest of the install (Remember to give the cd a moment to spin up before clicking ok)
- 9) At the SAS Administrator Wizard Complete screen, click Finish
- 10) Now you have the new product added to your SAS image

Having the new product added to the image does not mean that the SAS installations on your workstations have this new product. In order to get the new product added to the existing installs, it would be necessary now to update the installs at each workstation. You would use the instructions at the beginning of this paper keeping in mind that this would be varied somewhat since you would be doing the install from the server image. In other words, you are now running setup.exe from your server image and you would still be doing a custom install to add a component.

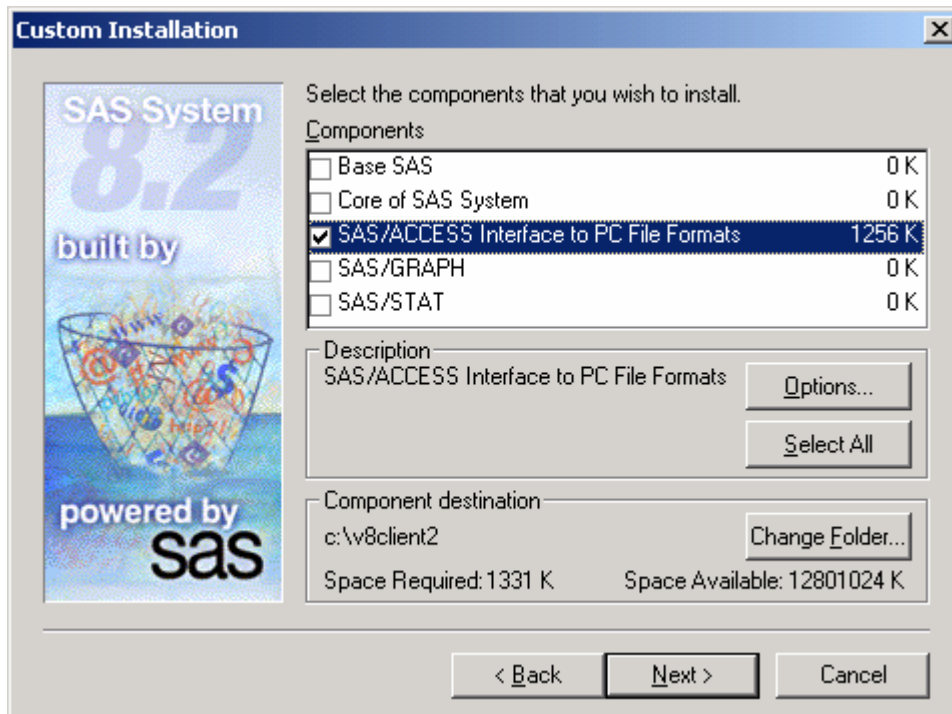
Note: This is true if the initial install was a personal install. That is, if it was a complete or custom install. Important: If it was a client install however, you would simply repeat another client install at this point to get the new product added to the workstation install.

Depending on what type of install you had performed in the beginning...complete, custom or client, you can now proceed. If it is not known what type of install was performed at the workstation, examine the `-set sasext0` and `-set sasroot` statements in the `sasv8.cfg` file with Notepad. If these statements reflect a local hard drive path then that is a personal install. If these statements reflect a network drive location then that is a client install.

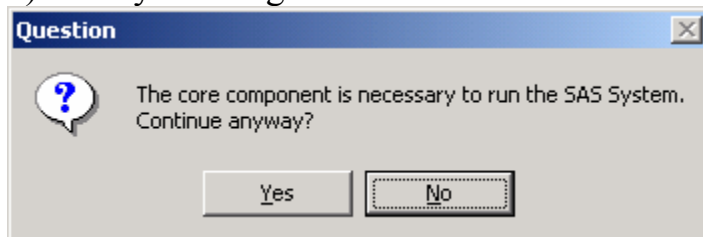
### **If the initial install was a personal install**

If the initial install was a personal install, then refer to the steps at the beginning of this paper and rather than putting in the `setup cd` as in step one, you would navigate to and run `setup.exe` from the SAS image on your server drive. Then the instructions are the same until you get to step 7. There is a difference in the screen name as noted here picking up with step 7.

- 7) At the Custom Installation screen, de-select everything, click Unselect All
- 8) Then check SAS/Access Interface to PC File Formats and click Next



9) Then you will get a screen like this:



10) Click Yes to continue (the core component is already installed)

11) Then click Next again and follow through with the install

12) Click Finish at SAS System Setup Complete

### **If the initial install was a client install**

If the initial install was a client install, it is necessary to repeat the client install and that will automatically add the new product from the server image.