



Discovering the Road Less Traveled to SAS Information: A Guide for your Journey

Renee Harper and Lainie Hoverstad
SAS Institute, Cary, NC





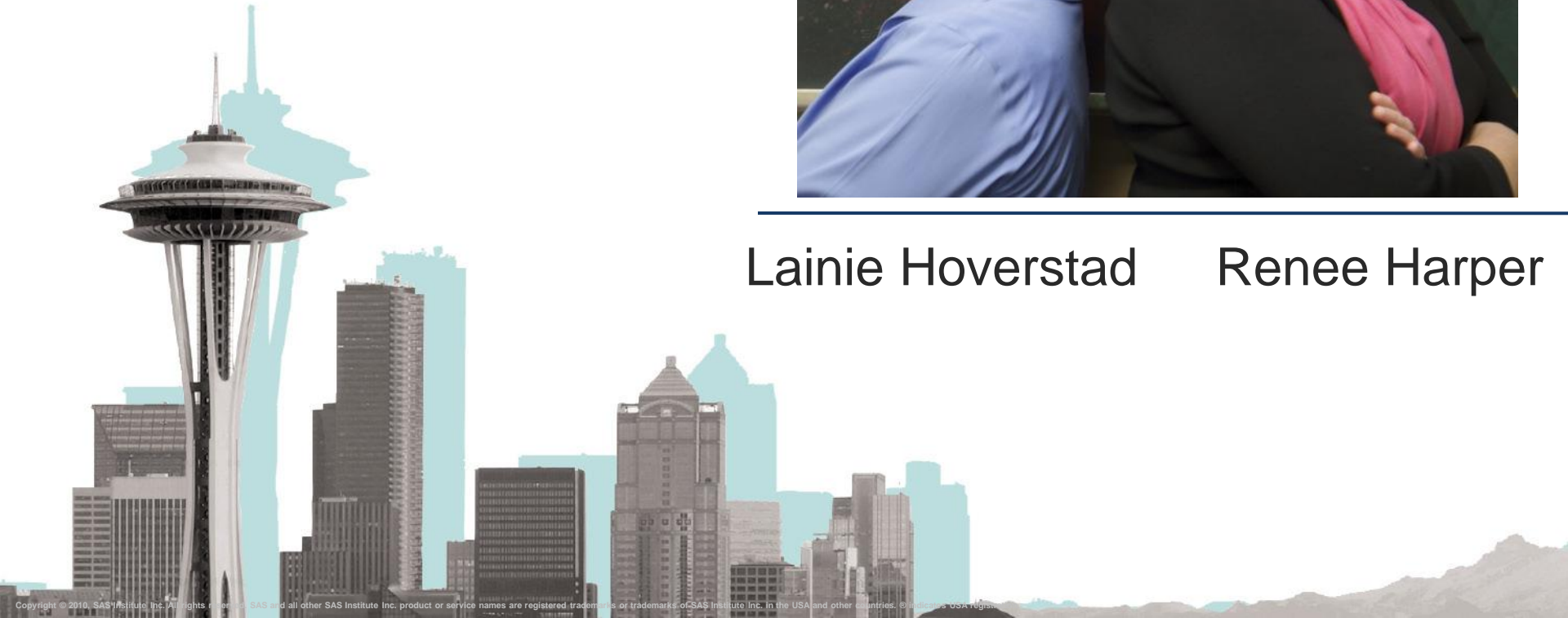
20
10

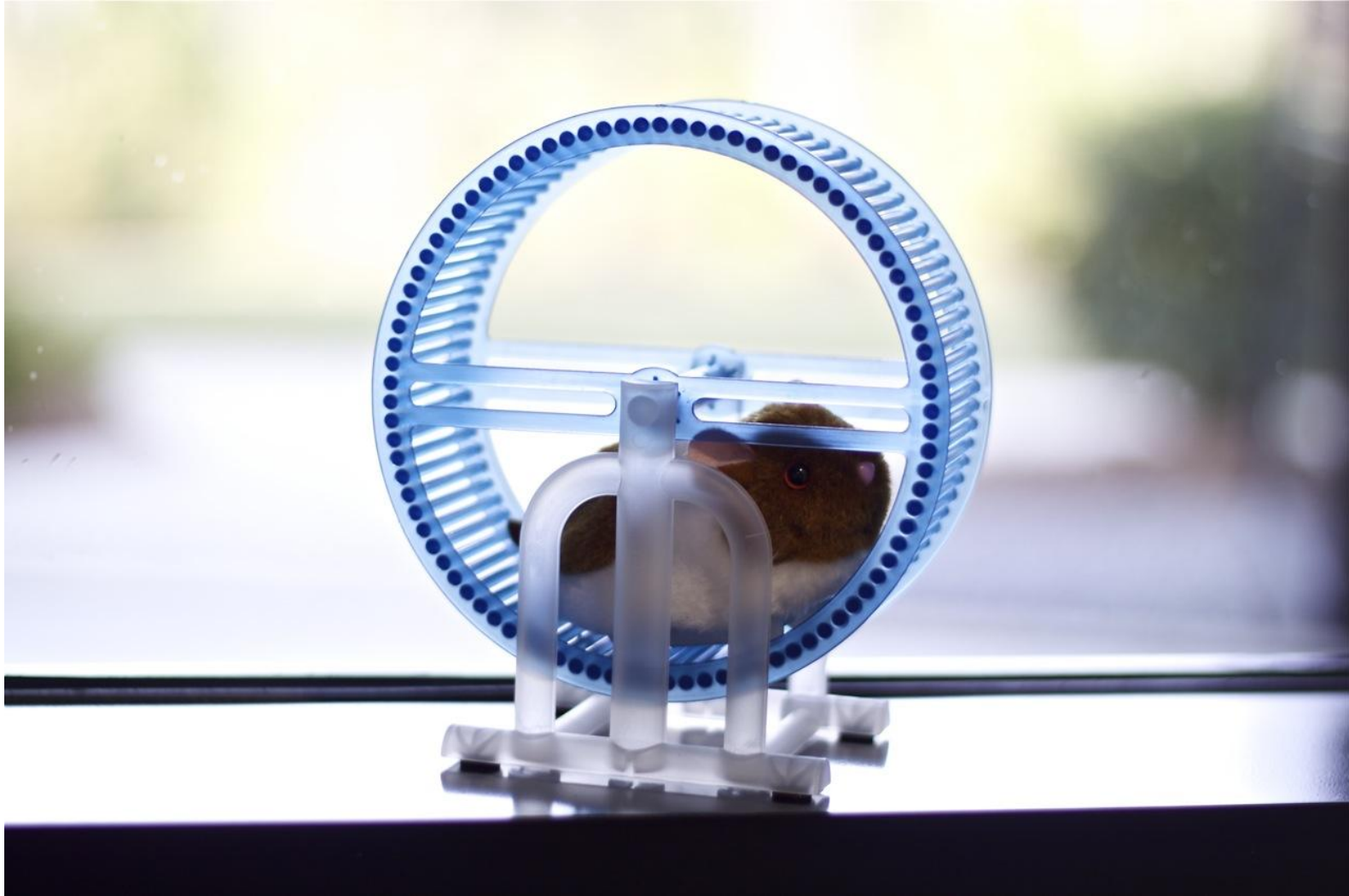
APRIL 11-14
SEATTLE
WASHINGTON



Lainie Hoverstad

Renee Harper





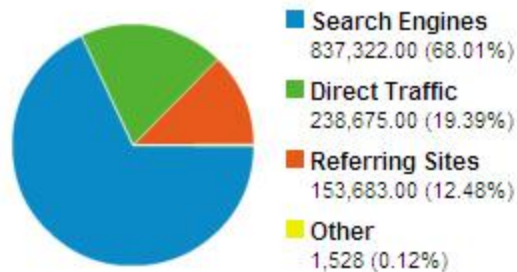
Talking Points

- Searching
- Watching
- Building a Portal
- Participating
- Resource Review
- Q&A

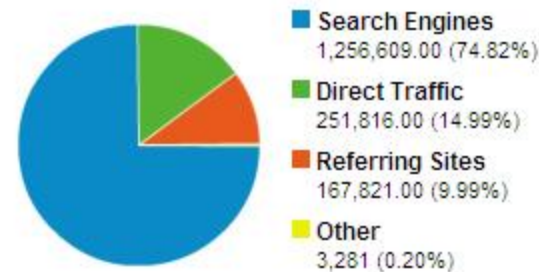


Searching

- 75% traffic came from a search engine



1st Quarter
2009



1st Quarter
2010

- 12% of all visits include a site search
- #1 site feedback: Search

Six Global Search Tips

- Use quotation marks for phrases
- Use plus signs (+) in front of important words
- Add minus sign (-) in front of words to exclude
- Select best site for searching
- Refine your search
- Leverage search help & advance search features

Search Tips: support.sas.com

Select a section to search

Find information containing...

all these words

this exact wording or phrase

one or more of these words or or

Don't show information containing...

any of these words

Results per page 10 25 50 100

```
+"access method" -"Version -8" +filename +statement +http
```

Search Tips: support.sas.com

Select a section to search Samples & SAS Notes

Find information containing...

all these words

this exact wording or phrase

one or more of these words or or

Don't show information containing...

any of these words

Results per page 10 25 50 100

[Search](#) [Reset](#)

Samples & SAS Notes [Search](#)

Filter Results By: Type Priority Fixed Release Product Release Operating System SAS Release

Applied Filters: [\(Reset All Filters\)](#)

Type: Sample [\(Reset Filter\)](#)

List: - 10 of 263 >>| Results per page:



Search Tip: sasCommunity.org

page discussion edit history delete move unprotect

Main Page

Welcome to sasCommunity.org

A collaborative online community for SAS® users worldwide.

sasCommunity.org is an ongoing global community effort—created by SAS users who collaborate on ideas and connect with others in the worldwide SAS community.

Web Images Groups News

excel

Search

Appliance

Advanced Search

Search Tips

While PROC EXPORT can not create a CSV file with headers directly, you can use PROC EXPORT combined with a DATA step, just a DATA step, ODS and the

Advanced Search

Find results

with **all** of the words 10 results

with the **exact phrase**

with **at least one** of the words




without the words

Watching

■ Value of Watching

- The content is delivered to you.
- Set up once; receive continual delivery.

■ Tools for Watching

- RSS Feeds 
- Watches  [Watch](#)
- Alerts  [Alerts](#)

Watching – RSS

■ RSS (Really Simple Syndication) Feeds

- Simple, one-click subscription
- Configurable deliverable
- Choice of readers
- Easy to scan content

■ Demo

-  **Problem Notes for SAS@9 -**
-  **sas - Twitter Search**
-  **SAS Discussion Forums : Popular Thre...**
-  SAS Global Forum - Twitter Search
-  SAS Notes for SAS@9 -
-  **SAS Samples**
-  sasmemories
-  **SEOmоз Daily SEO Blog**
-  Support Center News Blog
-  **Support Forums: Message List - root**
-  **support.sas.com Recent Highlights**
-  The sascom magazine blog
-  **Updates in SAS Online Support**

Watching – Watches & Alerts

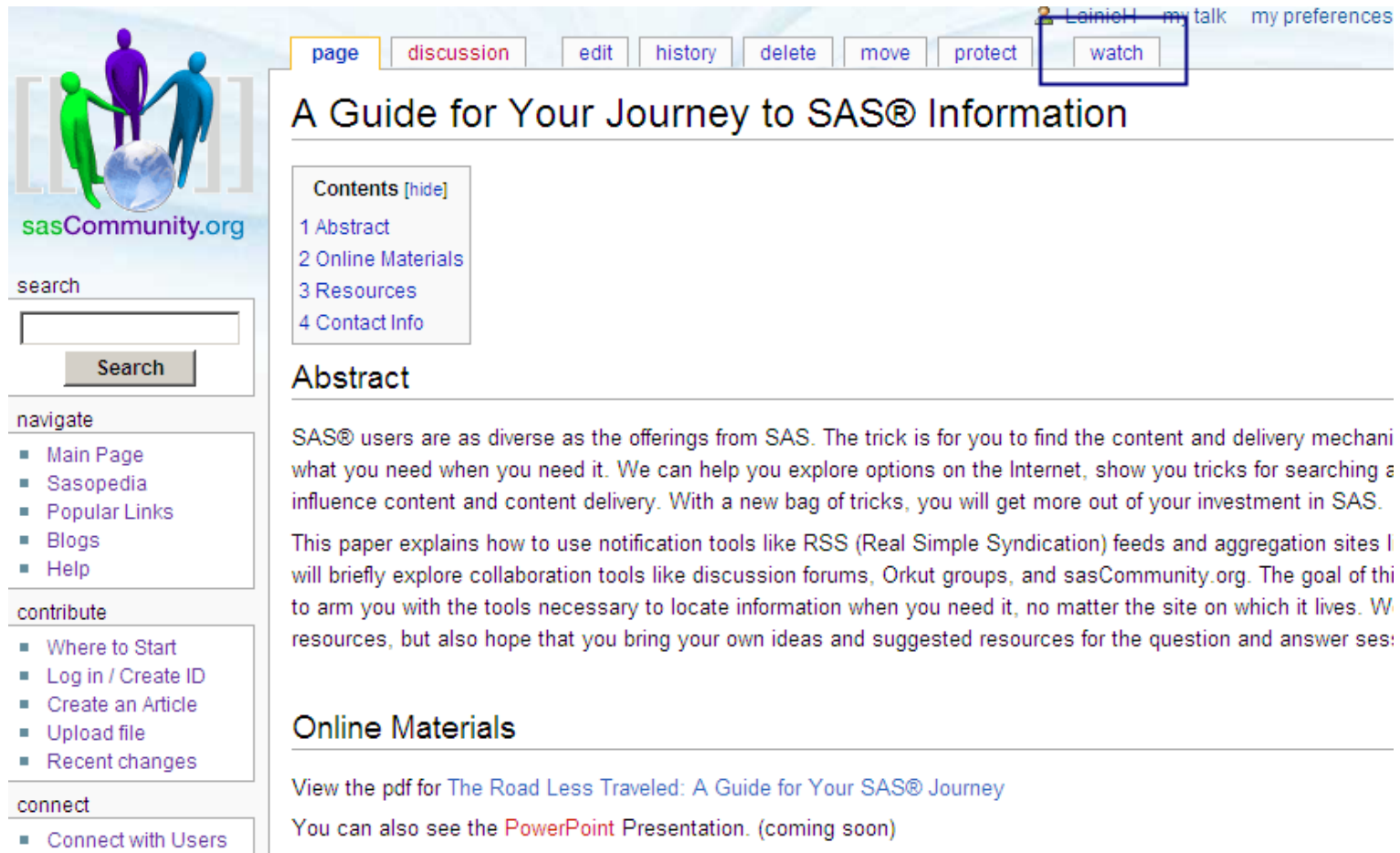
■ Watches

- Enable you to keep track of recent changes and content updates for a single location (such as a forum or wiki page).

■ Alerts

- Enable you to monitor the *entire internet* for a specific topic.

Watch Example



The screenshot shows a Wikipedia page titled "A Guide for Your Journey to SAS® Information". At the top right, a user profile for "Lainiel" is visible with links for "my talk" and "my preferences". Below the profile is a row of action buttons: "page", "discussion", "edit", "history", "delete", "move", "protect", and "watch". The "watch" button is highlighted with a blue box. On the left side of the page, there is a sidebar for "sasCommunity.org" with a search box and navigation links. The main content area includes a "Contents" table of contents, an "Abstract" section, and an "Online Materials" section.

Navigation and User Interface:

- User: Lainiel | my talk | my preferences
- Action buttons: page, discussion, edit, history, delete, move, protect, watch
- Search: search [input] Search
- Navigation:
 - Main Page
 - Sasopedia
 - Popular Links
 - Blogs
 - Help
- Contribute:
 - Where to Start
 - Log in / Create ID
 - Create an Article
 - Upload file
 - Recent changes
- Connect:
 - Connect with Users

Page Content:

A Guide for Your Journey to SAS® Information

Contents [hide]

- 1 Abstract
- 2 Online Materials
- 3 Resources
- 4 Contact Info

Abstract

SAS® users are as diverse as the offerings from SAS. The trick is for you to find the content and delivery mechanism what you need when you need it. We can help you explore options on the Internet, show you tricks for searching and influence content and content delivery. With a new bag of tricks, you will get more out of your investment in SAS.


This paper explains how to use notification tools like RSS (Real Simple Syndication) feeds and aggregation sites I will briefly explore collaboration tools like discussion forums, Orkut groups, and sasCommunity.org. The goal of this is to arm you with the tools necessary to locate information when you need it, no matter the site on which it lives. We have resources, but also hope that you bring your own ideas and suggested resources for the question and answer sessions.

Online Materials

View the pdf for [The Road Less Traveled: A Guide for Your SAS® Journey](#)

You can also see the [PowerPoint Presentation](#). (coming soon)

Watch Example



[LainieH](#)
[my talk](#)
[my preferences](#)

my watchlist

[my contributions](#)
[log out](#)

special page

My watchlist

(for LainieH)
[View relevant changes](#) | [View and edit watchlist](#) | [Edit raw watchlist](#)

Watchlist options

27 pages on your watchlist, not counting talk pages.

- E-mail notification is enabled.
- Pages which have been changed since you last visited them are shown in **bold**

Mark all pages visited

Below is **1** change in the last 3 days, as of 13:47, 9 April 2010.

Show last [1](#) | [2](#) | [6](#) | [12 hours](#) | [1](#) | [3](#) | [7 days](#) | [all](#)

[Hide minor edits](#) | [Hide bots](#) | [Hide anonymous users](#) | [Hide logged-in users](#) | [Hide my edits](#) | [Hide patrolled edits](#)

Namespace: Invert selection

9 April 2010

- [\(diff\)](#) [\(hist\)](#) . . **A Guide for Your Journey to SAS® Information; 13:47 . . (+12) . . LainieH** ([Talk](#) | [contribs](#) | [block](#))
(added area for paper resources)

search

navigate

- Main Page
- Sasopedia
- Popular Links
- Blogs
- Help

contribute

- Where to Start
- Log in / Create ID
- Create an Article
- Upload file
- Recent changes

connect

- Connect with Users

Building a Portal

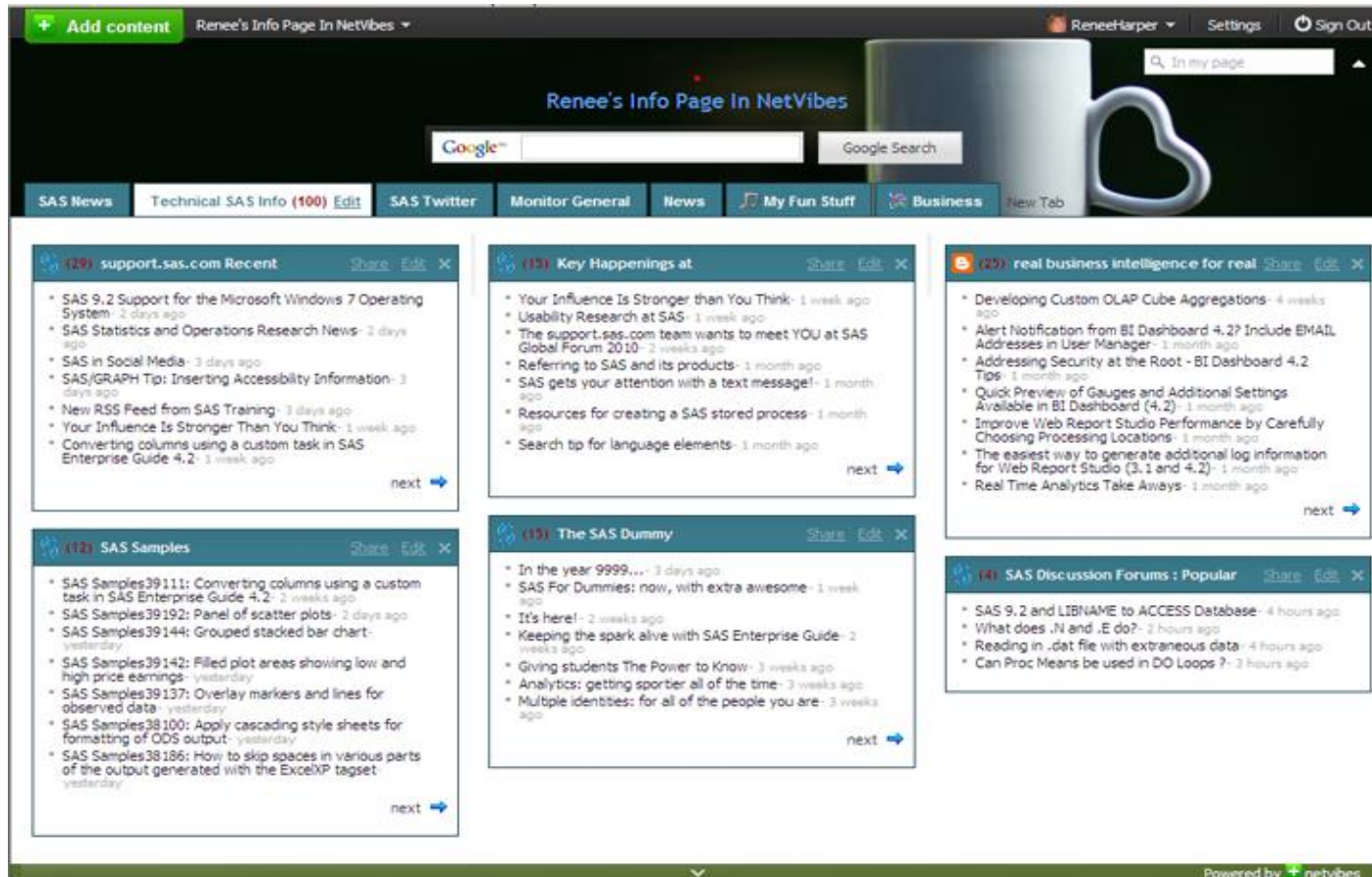
■ Value

- Collects information from different sources
- Configurable layout enables you to keep multiple information types one location
- Can be shared or private

■ Tools

- SharePoint, iGoogle, My Yahoo, NetVibes,
- Even your company intranet or team Web site

Portal - Example



Technical SAS Info (100)

(29) support.sas.com Recent

- SAS 9.2 Support for the Microsoft Windows 7 Operating System - 2 days ago
- SAS Statistics and Operations Research News - 2 days ago
- SAS in Social Media - 3 days ago
- SAS/GRAPH Tip: Inserting Accessibility Information - 3 days ago
- New RSS Feed from SAS Training - 3 days ago
- Your Influence Is Stronger Than You Think - 1 week ago
- Converting columns using a custom task in SAS Enterprise Guide 4.2 - 1 week ago

(15) Key Happenings at

- Your Influence Is Stronger than You Think - 1 week ago
- Usability Research at SAS - 1 week ago
- The support.sas.com team wants to meet YOU at SAS Global Forum 2010 - 3 weeks ago
- Referring to SAS and its products - 1 month ago
- SAS gets your attention with a text message! - 1 month ago
- Resources for creating a SAS stored process - 1 month ago
- Search tip for language elements - 1 month ago

(20) real business intelligence for real

- Developing Custom OLAP Cube Aggregations - 4 weeks ago
- Alert Notification from BI Dashboard 4.2? Include EMAIL Addresses in User Manager - 1 month ago
- Addressing Security at the Root - BI Dashboard 4.2 Tip - 1 month ago
- Quick Preview of Gauges and Additional Settings Available in BI Dashboard (4.2) - 1 month ago
- Improve Web Report Studio Performance by Carefully Choosing Processing Locations - 1 month ago
- The easiest way to generate additional log information for Web Report Studio (3.1 and 4.2) - 1 month ago
- Real Time Analytics Take Aways - 1 month ago

(12) SAS Samples


- SAS Samples39111: Converting columns using a custom task in SAS Enterprise Guide 4.2 - 2 weeks ago
- SAS Samples39192: Panel of scatter plots - 2 days ago
- SAS Samples39144: Grouped stacked bar chart - yesterday
- SAS Samples39142: Filled plot areas showing low and high price earnings - yesterday
- SAS Samples39137: Overlay markers and lines for observed data - yesterday
- SAS Samples38100: Apply cascading style sheets for formatting of ODS output - yesterday
- SAS Samples38186: How to skip spaces in various parts of the output generated with the ExcelXP tagset - yesterday

(15) The SAS Dummy

- In the year 9999... - 3 days ago
- SAS For Dummies: now, with extra awesome - 1 week ago
- It's here! - 2 weeks ago
- Keeping the spark alive with SAS Enterprise Guide - 2 weeks ago
- Giving students The Power to Know - 3 weeks ago
- Analytics: getting sporter all of the time - 3 weeks ago
- Multiple identities: for all of the people you are - 3 weeks ago

(14) SAS Discussion Forums : Popular

- SAS 9.2 and LIBNAME to ACCESS Database - 4 hours ago
- What does .N and .E do? - 2 hours ago
- Reading in .dat file with extraneous data - 4 hours ago
- Can Proc Means be used in DO Loops? - 2 hours ago

Powered by  netvibes

■ This page is public!

Participating

■ Value

- You can influence the content that other people provide.
- You can create content that

■ Tools

- Blogs
- [Support.sas.com](http://support.sas.com) Forums
- sasCommunity.org
- More...

Resources at the Conference

- At Your Service: Your Roadmap to Support from SAS® (3:30 Monday)
- Once You “Know” SAS® ... How to Keep Learning It (3:00 Monday)
- Meetup *Samples and Forums and Tips, Oh My! Tell Us What SAS Web Content is Most Relevant to You* (6:00 Tuesday)

Resources

- [Paper Resources on sasCommunity.org](#)
 - Provides a list of resources to include in portals
 - Provides a list of participation sites
- Get this paper and presentation from support.sas.com/saspresents
- Follow updates on Key Happenings on support.sas.com at blogs.sas.com/supportnews



Questions & Answers

- Didn't get your questions answered?
Find us on the demo floor while at the conference
or e-mail us at wwwsupport@sas.com



20
10

APRIL 11-14
SEATTLE
WASHINGTON



Thank you for spending this time with us!

