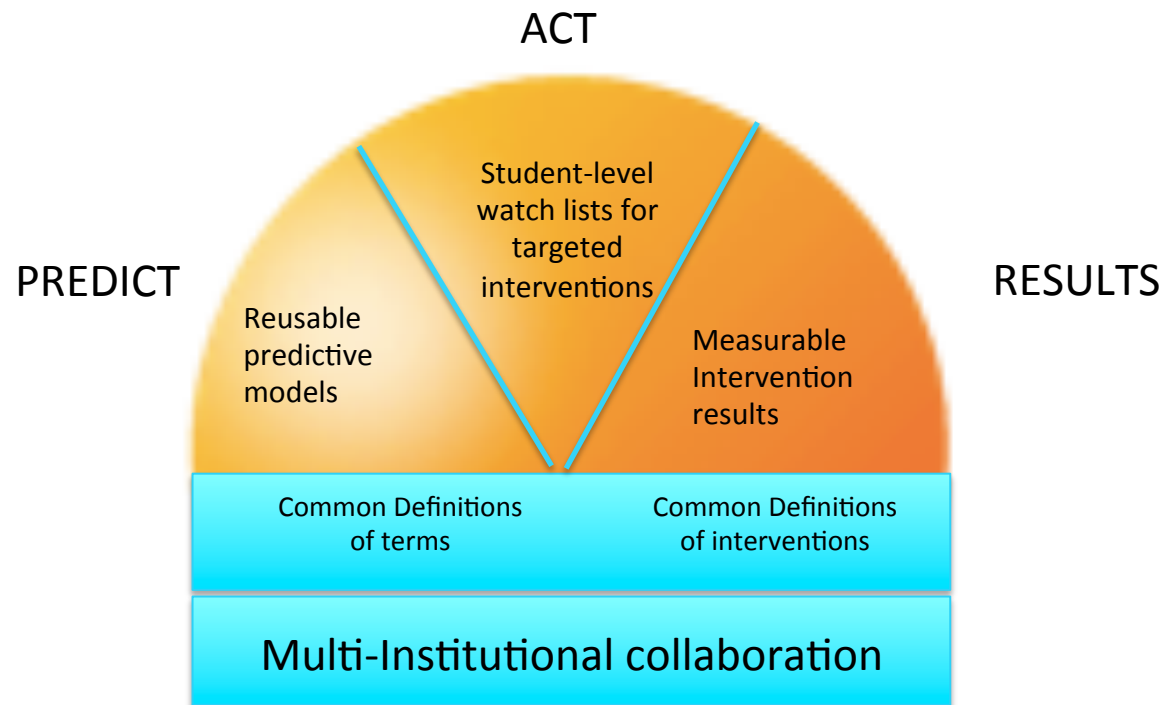




Predictive Analytics Reporting Framework

Heidi Hiemstra
Director, Research

Initial funding
and support
from:



Delivered
through:



39 forward-thinking US Colleges and Universities
Data-driven insights
National, non-profit



STUDENT SUCCESS MATRIX (SSM^x)

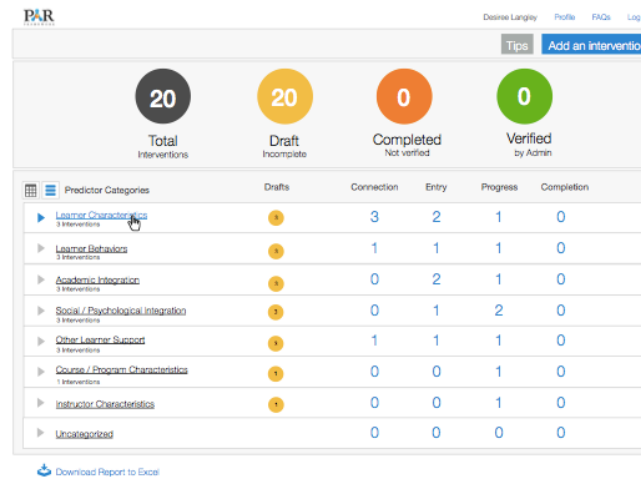
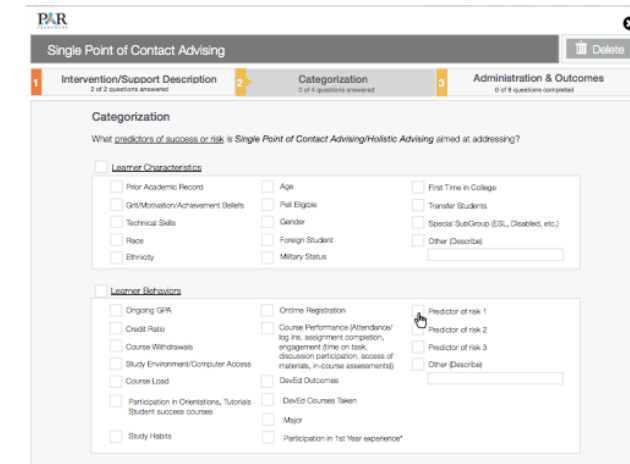
*Literature-based tool to inventory and benchmark student services and **interventions***

- Includes 600+ total interventions at PAR member institutions
- Ability to compare among all PAR institutions

| PREDICTOR CATEGORY <small>italics = research literature regular = partner experience bold = PAR Framework findings —limited list of predictors below each category—</small> | CONNECTION <small>application to enrollment (advising to enrollment)</small> | ENTRY <small>completion of gatekeeper courses (beginning of class)</small> | PROGRESS <small>entry into program to 75% of classes complete (middle of class)</small> | COMPLETION <small>of course of study & credential w/ market value (end of class)</small> |
|--------------------------------------------------------------------------------------------------------------------------------------------------------------------------------------------|-------------------------------------------------------------------------------------|---------------------------------------------------------------------------------------|----------------------------------------------------------------------------------------------------|---------------------------------------------------------------------------------------------------------|
| LEARNER CHARACTERISTICS <small>prior GPA; achievement beliefs; content knowledge & skills; ... 1st time in college</small> | | | | |
| LEARNER BEHAVIORS <small>attendance/log ins; participation in orientation programs; withdrawals; ... engagement</small> | | | | |
| ACADEMIC INTEGRATION <small>participation in student learning communities; peer mentoring; ... specialized program coordinators</small> | | | | |
| SOCIAL/PSYCHOLOGICAL INTEGRATION <small>perceived social presence; participation in freshmen interest groups; ... specialized program coordinators</small> | | | | |
| OTHER LEARNER SUPPORT <small>ongoing student support services...</small> | | | | |
| COURSE/PROGRAM CHARACTERISTICS <small>perceived interactivity; ... perceived utility</small> | | | | |
| INSTRUCTOR BEHAVIORS/CHARACTERISTICS <small>faculty responsiveness; ... perceived social presence</small> | | | | |

Targeted Focus¹ • General Focus²

CC BY-NC-ND 3.0 Except where otherwise noted, this work is licensed under <http://creativecommons.org/licenses/by-nc-nd/3.0/>

Single Point of Contact Advising

1 Intervention/Support Description 2 Categorization 3 Administration & Outcomes

What predictors of success or risk is Single Point of Contact Advising/Holistic Advising aimed at addressing?

Learner Characteristics

- ☐ Peer Academic Record
- ☐ Age
- ☐ First Time in College
- ☐ Giftedness/Achievement Beliefs
- ☐ Fall Eligible
- ☐ Transfer Students
- ☐ Technical Skills
- ☐ Gender
- ☐ Special SubGroup (ESL, Disabled, etc.)
- ☐ Race
- ☐ Foreign Student
- ☐ Other (Describe)
- ☐ Ethnicity
- ☐ Military Status

Learner Behaviors

- ☐ Ongoing GPA
- ☐ Online Registration
- ☐ Credit Ratio
- ☐ Course Performance (Attendance/ log ins, assignment completion, engagement time on task, discussion participation, access of materials, in-course assessment)
- ☐ Course Withdrawals
- ☐ Study Environment/Computer Access
- ☐ DevEd Outcomes
- ☐ Course Load
- ☐ Participation in Orientations, Tutorials
- ☐ DevEd Courses Taken
- ☐ Student success courses
- ☐ Major
- ☐ Participation in 1st Year experience
- ☐ Study Habits

Predictor of risk 1
Predictor of risk 2
Predictor of risk 3
Other (Describe)

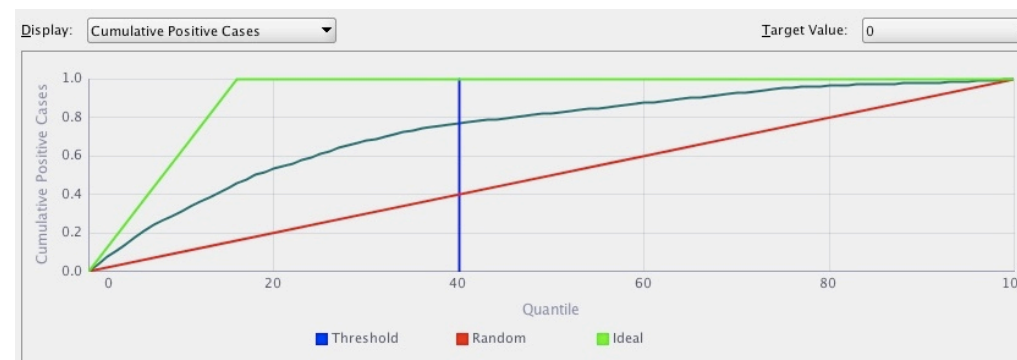
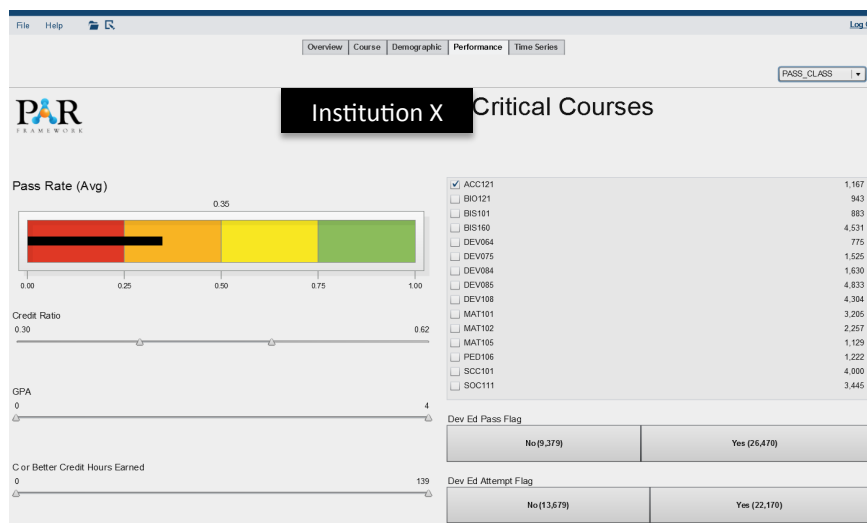


INSTITUTION-SPECIFIC PREDICTIVE MODELS

*Customized models to predict student **risk** and
give insight on student **attributes***

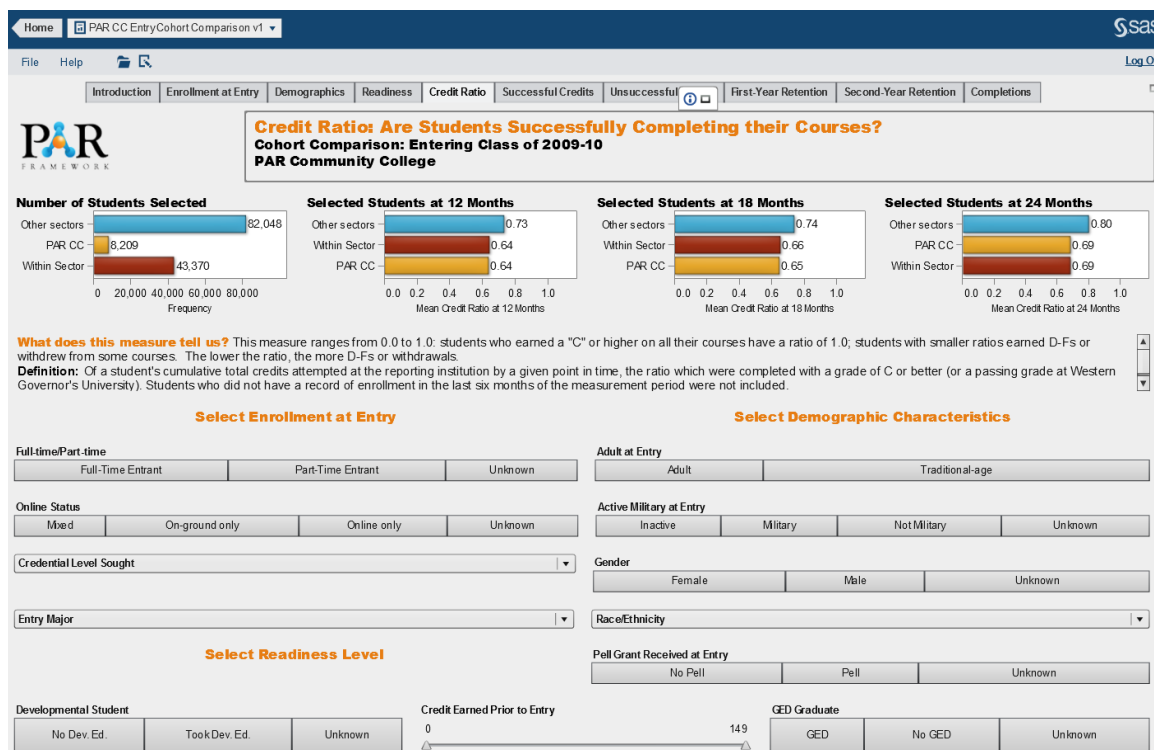
Outcomes modeled include:

- Retention
- Course completion
- Satisfactory academic progress
- Completion





COMPARATIVE BENCHMARKING



Student-level data
+
common data definitions
=
deeply **drillable**
comparative reports



Higher Education
Collaborative for Institutional Effectiveness and Student Success

Accepting new members now

Parframework.org