



THE
POWER
TO KNOW.

Technical Paper

Downloading and Installing SAS[®] Foundation 9.2
Phase 1 in the z/OS Operating Environment via
the Electronic Software Download or a DVD

Table of Contents

Introduction	1
Step 1: Download and Install the SAS® Download Manager	1
Step 2: Download SAS® Foundation Software.....	6
Step 3: Install and Deploy SAS® Foundation Software	12
Troubleshooting.....	24
Resources	24
Appendix	25
Glossary	33

Introduction

There are three separate stages in the process of installing SAS® Foundation 9.2 Phase 1 via the *electronic software download* or a DVD:

1. **Download and install the SAS® Download Manager.** This is a one-time process.
2. **Download SAS Foundation software.** You invoke the SAS Download Manager and enter the information from a specific *Software Order E-mail (SOE)*. You then create a *SAS Software Depot* by downloading the software that is associated with that order.
3. **Install and deploy SAS Foundation software.** This step uses the *SAS® Deployment Wizard*. While Steps 1 and 2 are similar on all operating systems, the SAS Deployment Wizard is specific to the host on which the software is being installed.

It is helpful to distinguish which stage you are in, particularly the first time you go through the process. The following sections describe in detail the series of steps you need to follow in order to install SAS Foundation 9.2 via the electronic software download or a DVD.

Step 1: Download and Install the SAS® Download Manager

Note: If you stop the following download and installation process and resume at a later time, you will be prompted to download a newer version of the SAS Download Manager, if it is subsequently available, before you can begin downloading SAS Foundation 9.2.

If you have already downloaded and installed the SAS Download Manager for another software order, go to the section "[Step 2: Download Your SAS Foundation Software](#)".

Follow these steps to download and install the SAS Download Manager:

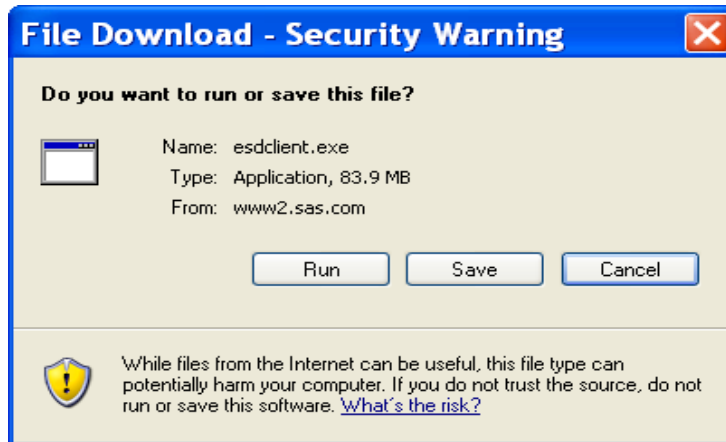
1. Go to www.sas.com/downloadmgr.
2. Click **Request Download** for the platform on which you are installing SAS Foundation 9.2.

Note: If you intend to install your SAS software order in a z/OS operating environment, then you must download and install the SAS Download Manager on a Windows machine. In the latest version of the SAS Download Manager table, click **Request Download** for the relevant Microsoft Windows platform.

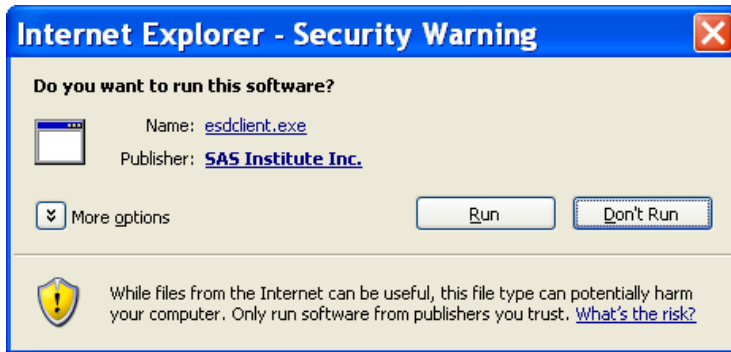
Before you can proceed to download your request, it is necessary to register with SAS and establish a SAS profile. If you already have a profile, you can log in with your e-mail address and password.

To get the instructions for executing this application on your operating system, retrieve a copy of the README file from the latest version of the SAS Download Manager table.

3. Click **Run** to begin downloading the SAS Download Manager.



4. Click **Run** again.



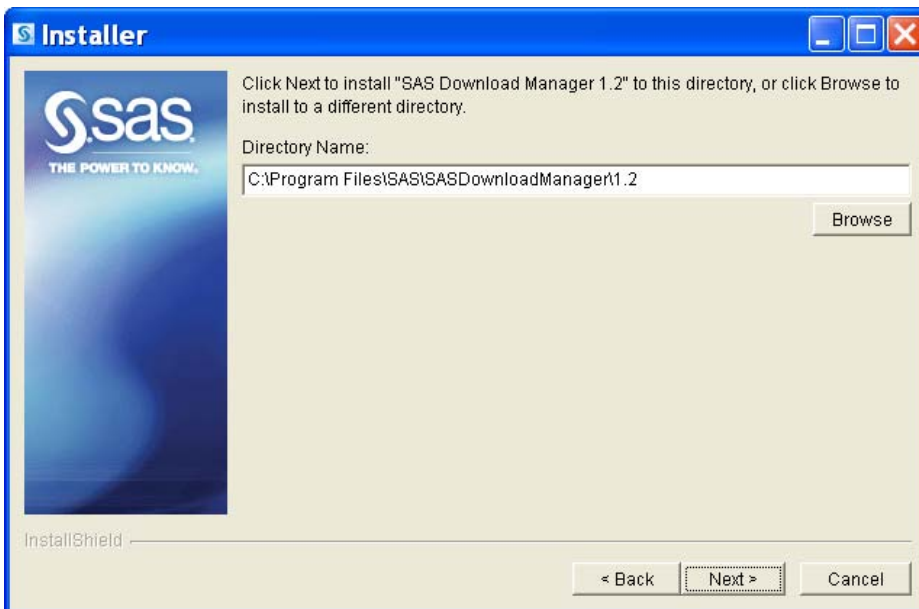
5. The SAS Download Manager InstallShield Wizard extracts the selected files. After the files are extracted, click **Next**.



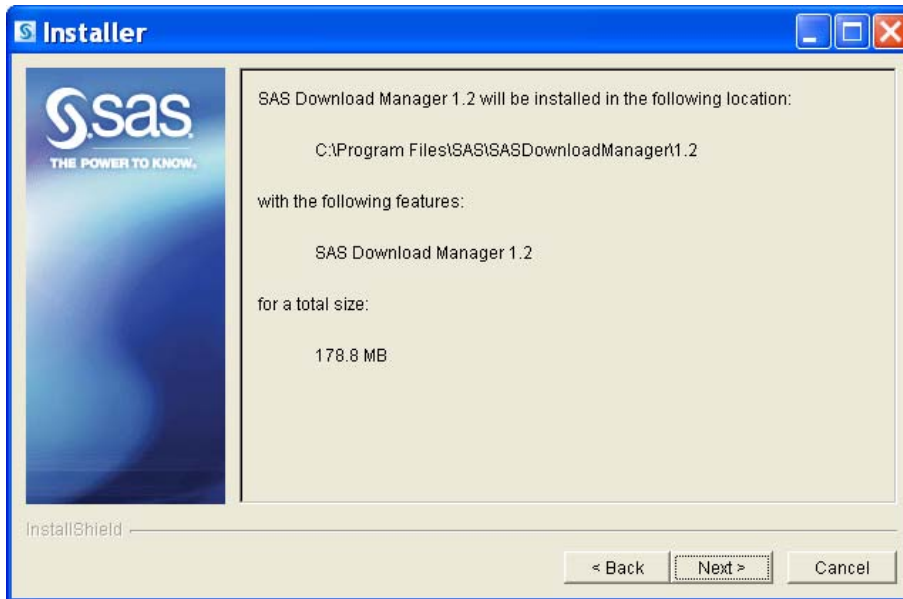
6. On the Installer Welcome page, click **Next** to continue.



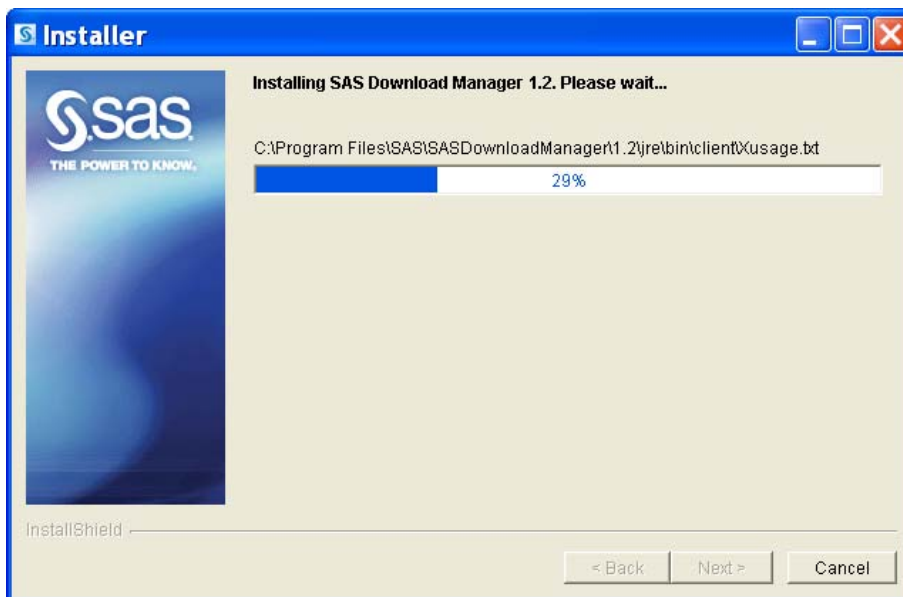
7. Click **Browse** to choose a location in which to install the SAS Download Manager, and then click **Next**.



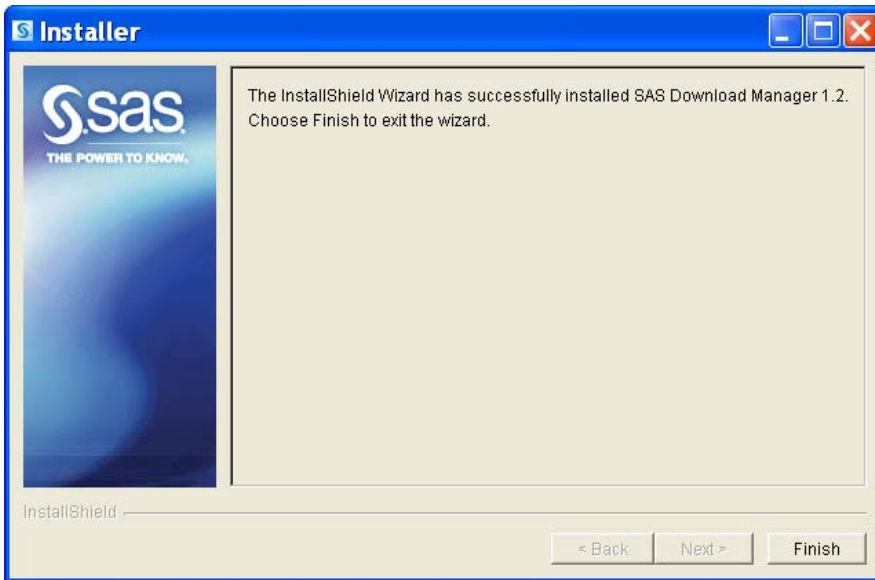
8. On the Installer summary page click **Next**.



The next Installer page tracks the progress of the SAS Download Manager installation.

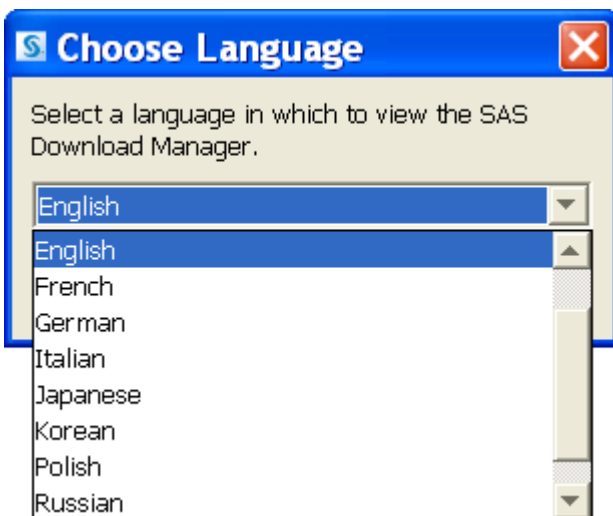


- When the InstallShield Wizard indicates that the SAS Download Manager has installed successfully, click **Finish**.



Note: If you intend to download a software order now, then select a language in the next step. Otherwise, click **Cancel** to close the Choose Language page. You can start the installation process later as shown in the section "[Step 2: Download SAS Foundation Software](#)".

- When the Choose Language page appears, select a language in which to view the SAS Download Manager and click **OK**.



- Download SAS Foundation software (see the next section "[Step 2: Download SAS® Foundation Software](#)").

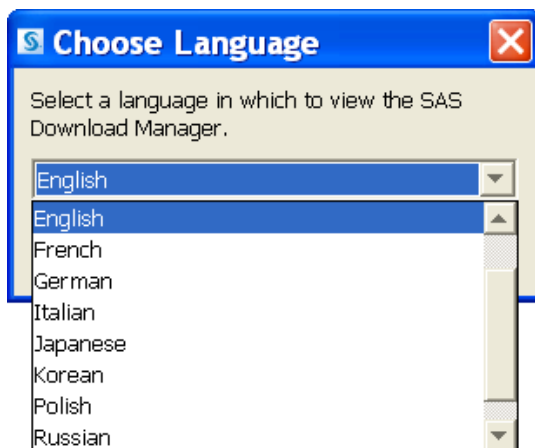
Step 2: Download SAS® Foundation Software

1. Start the SAS Download Manager if it is not already running. From the Start menu, click **Programs ► SAS ► SAS Download Manager**.

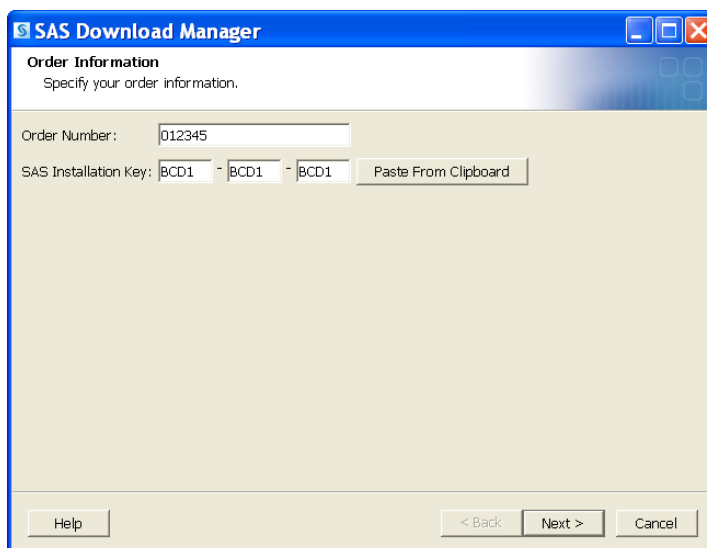
Alternatively, you can double-click the esdclient.exe file at
C:\Program Files\SAS\SASDownloadManager.

Note: If a newer version of the SAS Download Manager is available, you will be prompted to download that version before you can begin downloading SAS Foundation 9.2. Go to the section "[Step 1: Download and Install the SAS® Download Manager](#)".

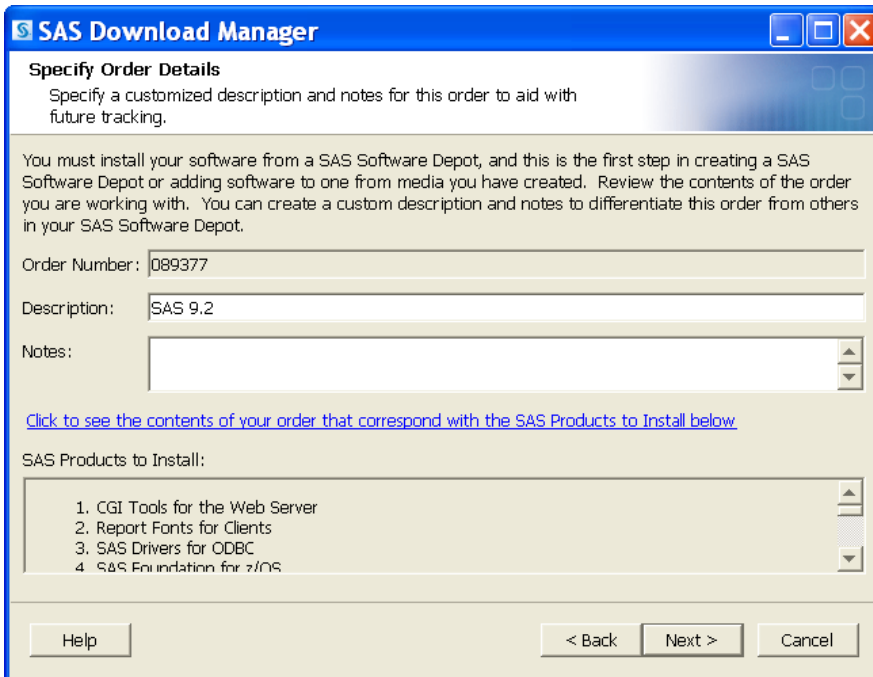
2. Select a Language in which to view the SAS Download Manager and click **OK**.



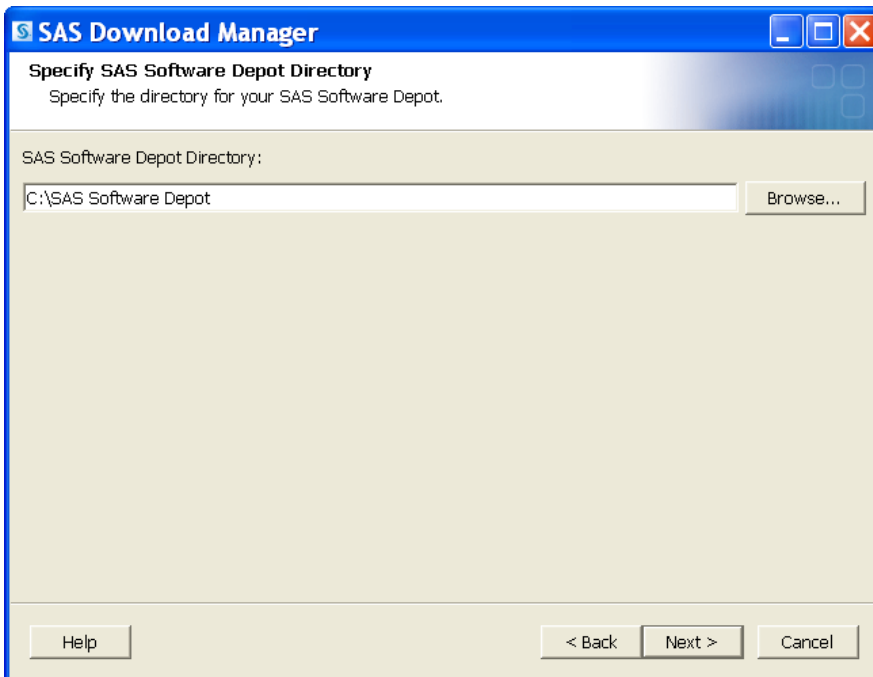
3. Ensure that you have your Software Order Number and SAS Installation Key, which is included in your Software Order E-mail. Type this information on the SAS Download Manager Order Information page and click **Next**.



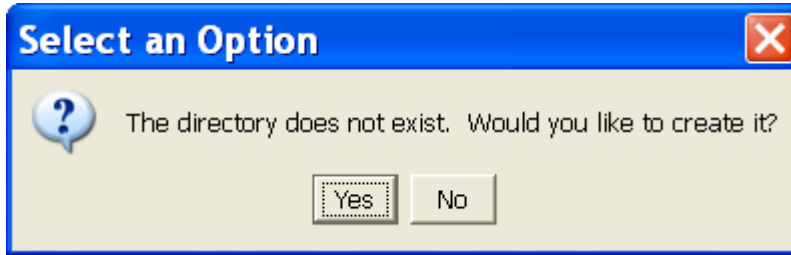
4. On the Specify Order Details page, type the Order Details information and click **Next**.



5. On the next page, click **Browse** to select the preferred directory for the SAS Software Depot, and then click **Next**.



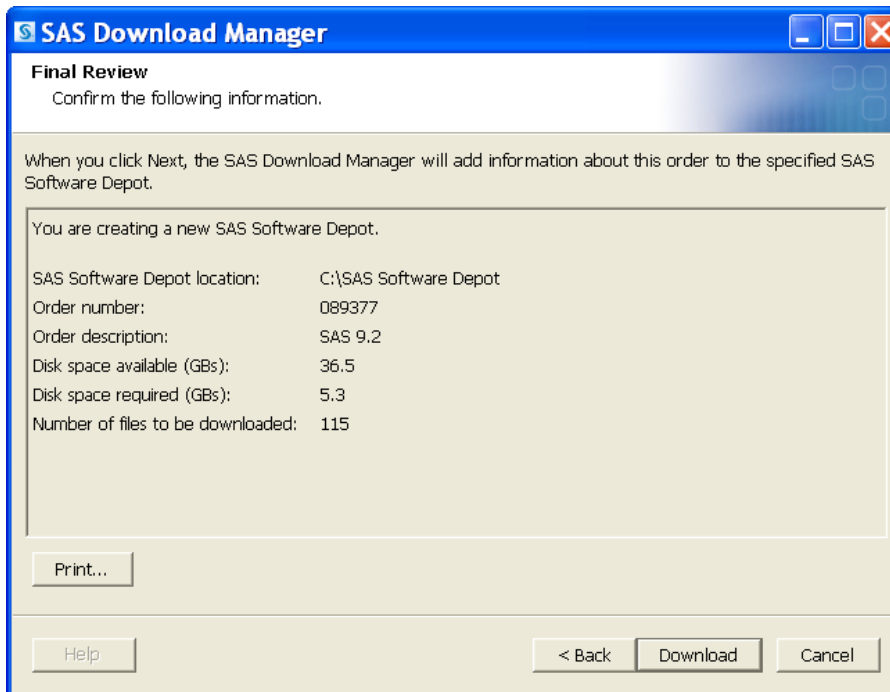
- If the directory that you specified does not exist, then you will be asked whether you want to create the directory. Click **Yes** to create the directory. (**Note:** If you click **No**, you cannot proceed any further with this process.)



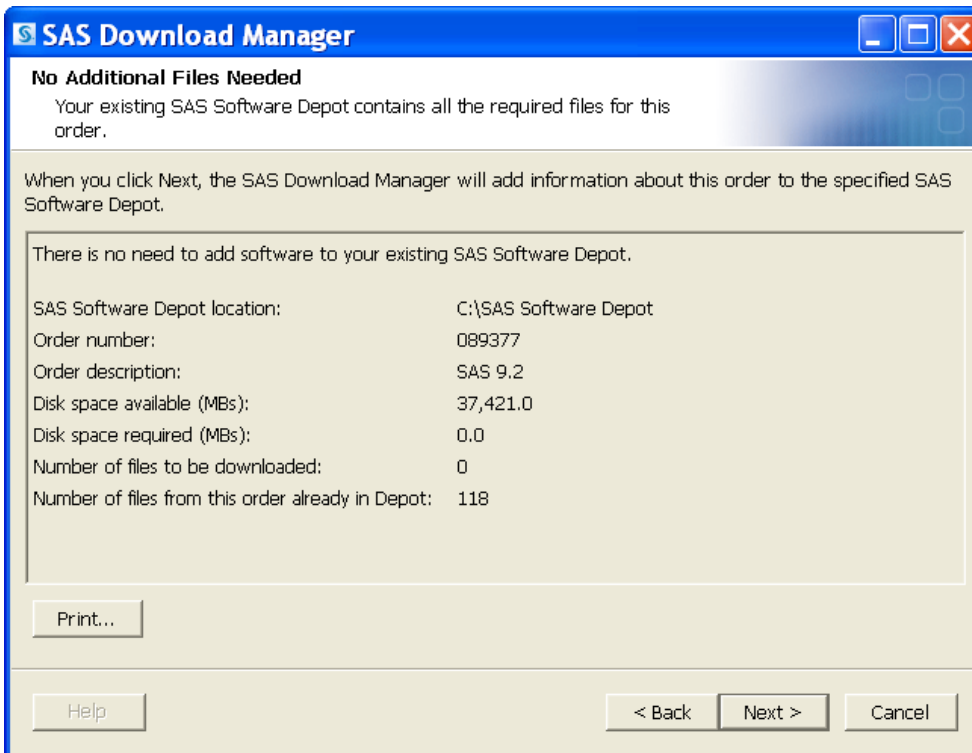
- If the directory that you specified contains an existing SAS Software Depot, then click **Yes** or **No** to indicate whether you want to add this SAS software order to the directory. (**Note:** If you click **No**, you cannot proceed any further with this process.)



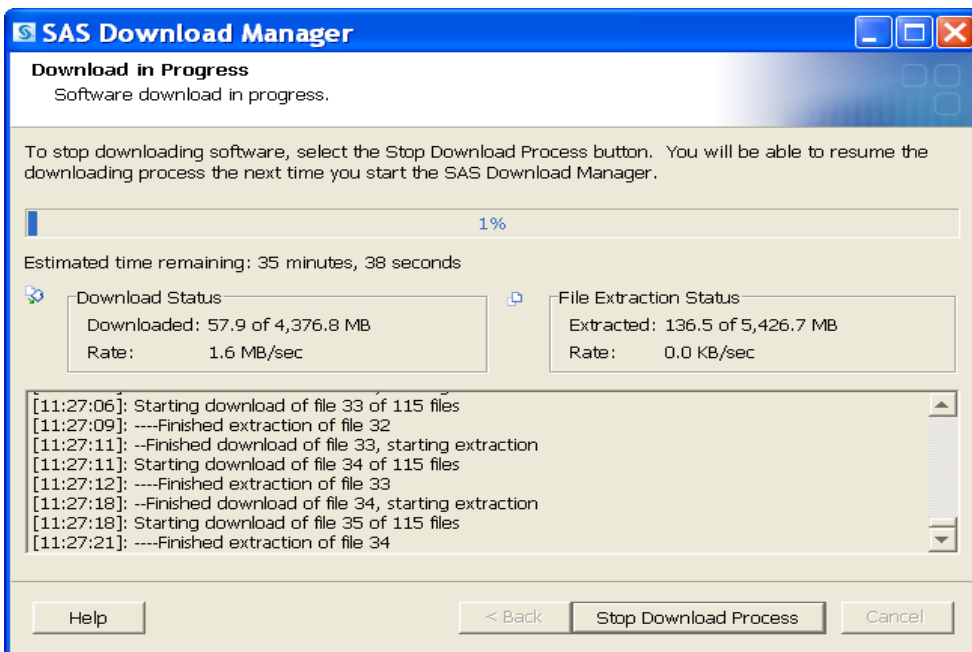
- On the next page, confirm the information and click **Download** to add information about this software order to the specified SAS Software Depot.



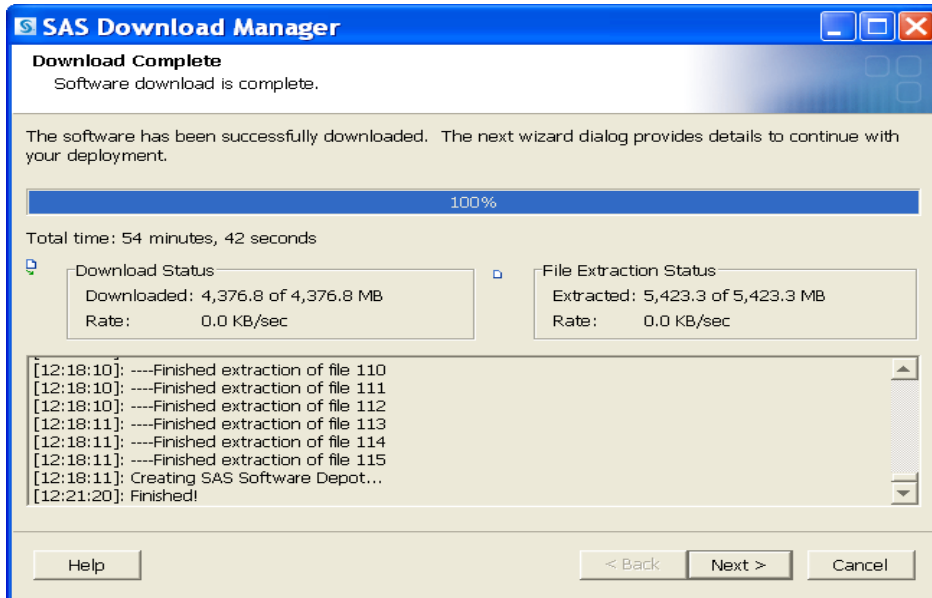
- The following screen displays to indicate that the SAS Software Depot contains all the required files for this software order. Click **Next** to add this information to the SAS Download Manager.



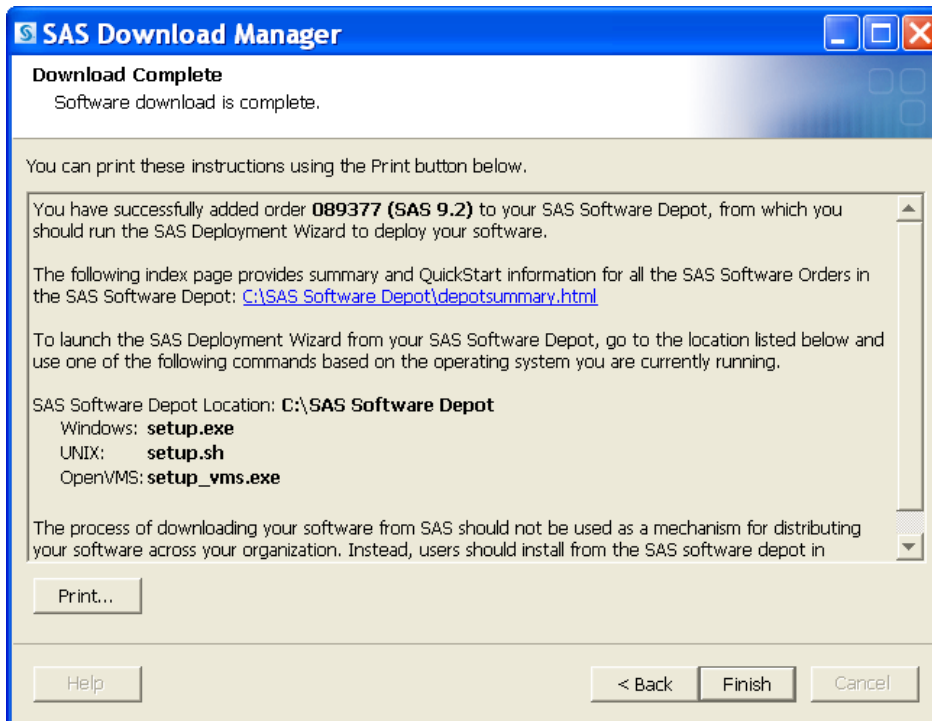
The following screen displays to indicate that the download is in progress. During this process, the SAS Download Manager retrieves and extracts compressed files (which can take some time).



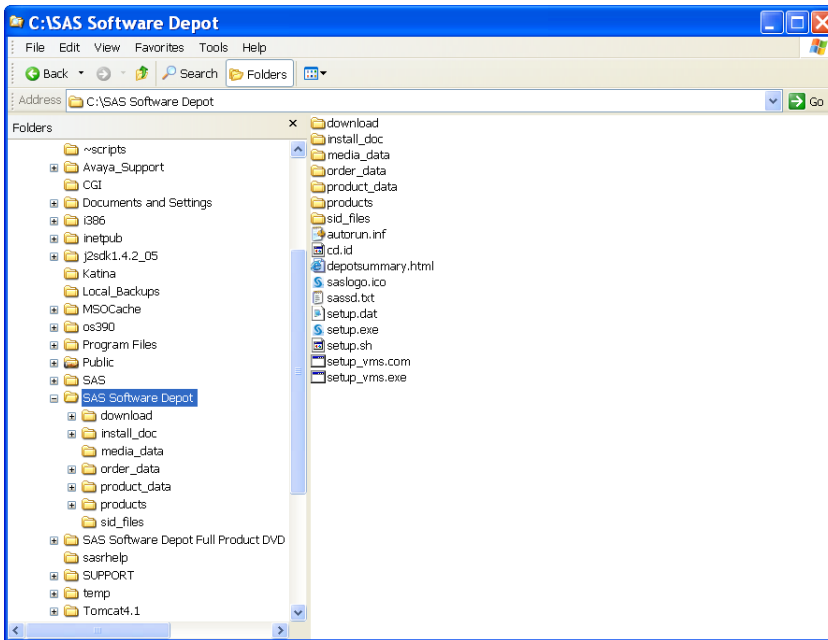
- When the SAS Download Manager Download Complete screen displays, click **Next**.



- On the next page of the Installation Wizard, click **Finish** to close the application.



After the SAS Download Manager completes, it creates a SAS Software Depot in the location that you indicated in the SAS Download Manager dialog boxes.



12. Next, install and deploy SAS Foundation software (see the section "[Step 3: Install and Deploy SAS® Foundation Software](#)").

Step 3: Install and Deploy SAS® Foundation Software

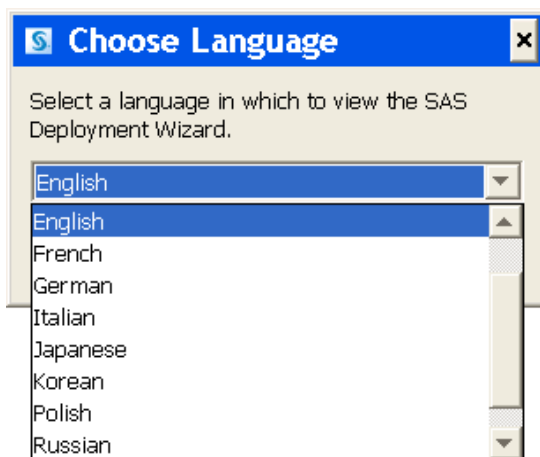
Note: If you are installing the software using one DVD media, start here; otherwise begin in Step 4 of the previous section at the Specify Order Details page.

In order to begin your SAS Foundation software installation, perform the following steps according to the operating system on which you are installing. For more information about installing in a z/OS environment, see the *SAS Deployment Wizard User's Guide* (SAS Institute Inc. 2008).

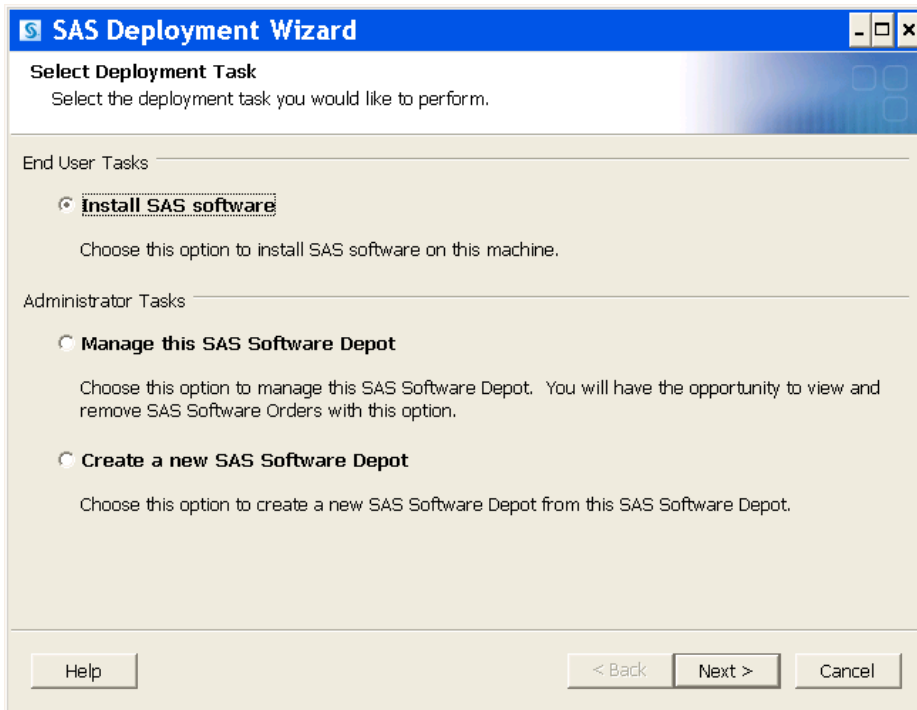
1. Start the SAS Deployment Wizard. Run the execute setup.exe file from SAS Software Depot location that you created in the previous section.



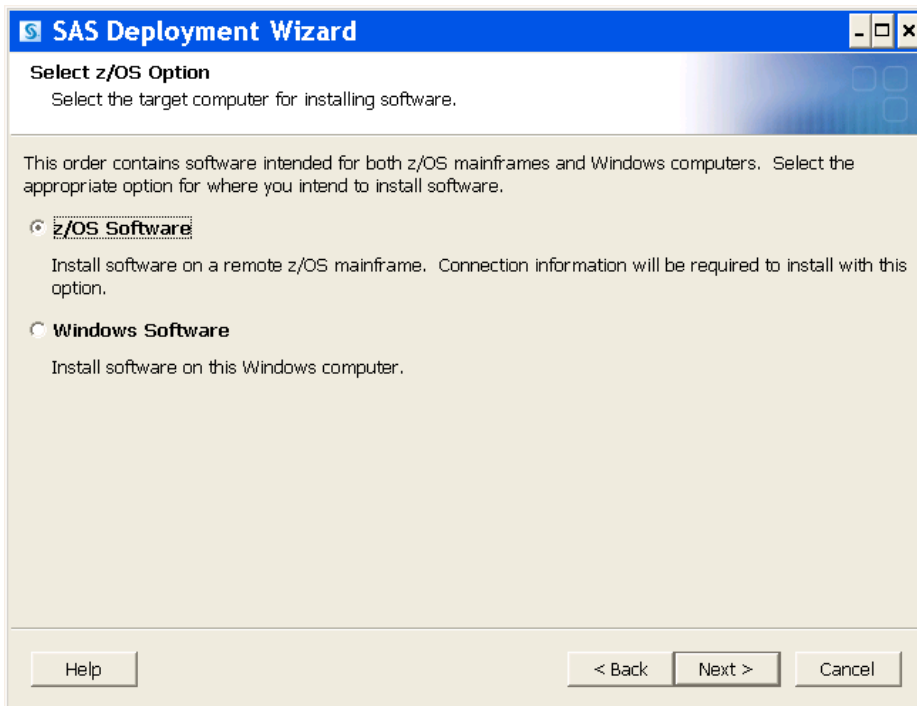
2. Select a language in which to view the SAS Deployment Wizard and click **OK**.



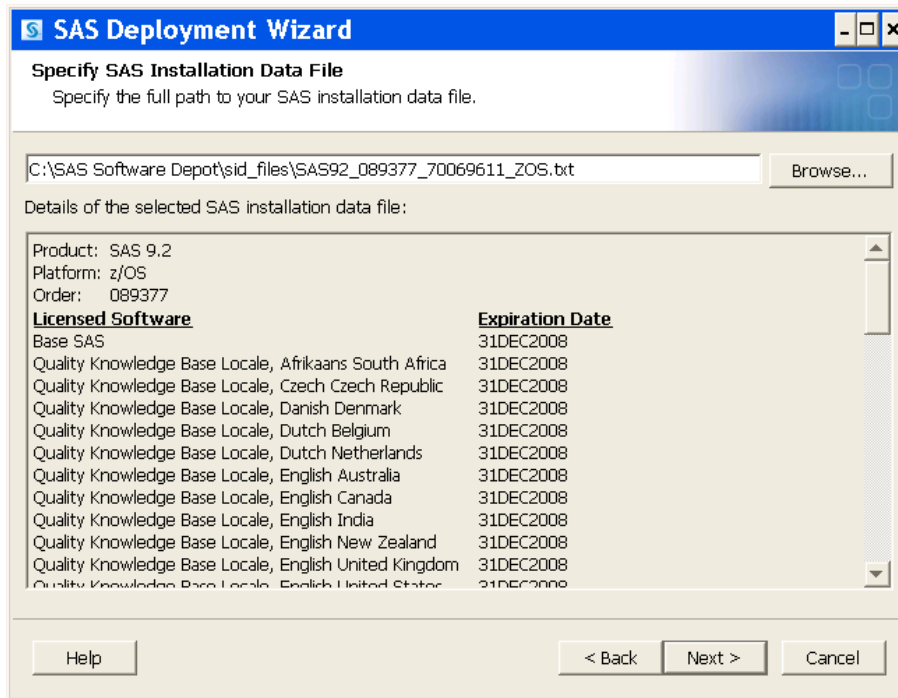
- On the Select Deployment Task page, click **Install SAS software**, and then click **Next**.



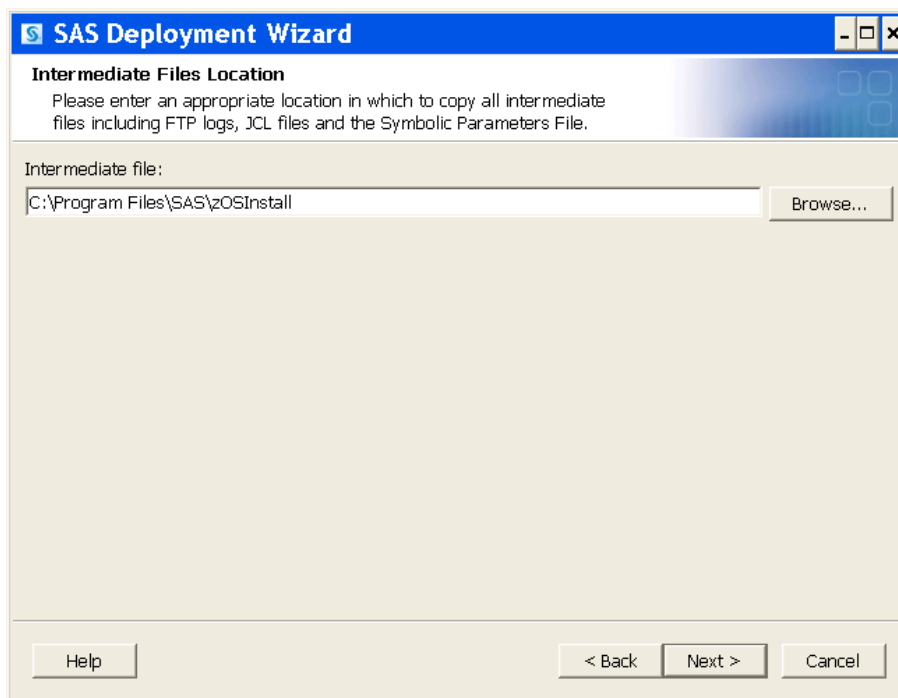
- On the Select z/OS Option page, click **z/OS software**, and then click **Next**.



- Click **Browse** to select the full path to your SAS Installation Data (SID) file. The dialog box provides the details of the SID file products that will be installed on the mainframe. Make sure that these products match those listed on your SAS Order E-mail or the SAS Order Information Letter. Click **Next**.



- On the Intermediate Files Location page, type the location in which to copy all intermediate files, including FTP logs, JCL files, and the symbolic parameters file. Click **Next**.



- On the FTP Batch Generation page, type the fully qualified host name, user ID, and password to access your mainframe, and then click **Next**.

SAS Deployment Wizard

FTP Batch Generation
Specify the fully-qualified host Name or I.P. address, User identification and associated password to access your mainframe OS.

Host Name:
machine name or ip address

User Id:
userid

Password:

Confirm Password:

Help < Back Next > Cancel

- On the next page, type the Jobcard information using Jobcard 1 through Jobcard 5 to create JOB statements for the generated jobs. Then click **Next**.

SAS Deployment Wizard

Specify Jobcard Information
Specify the JOB statement values, enclosing the statements in "" ". DO NOT CHANGE the ""/%SYSNAME."" symbol in the existing Jobcard 1 value.

Jobcard 1:
""/%SYSNAME. JOB ACCOUNT, 'PROGRAMMER-NAME', ""

Jobcard 2:
""// MSGCLASS=H,MSGLEVEL=(1,1), ""

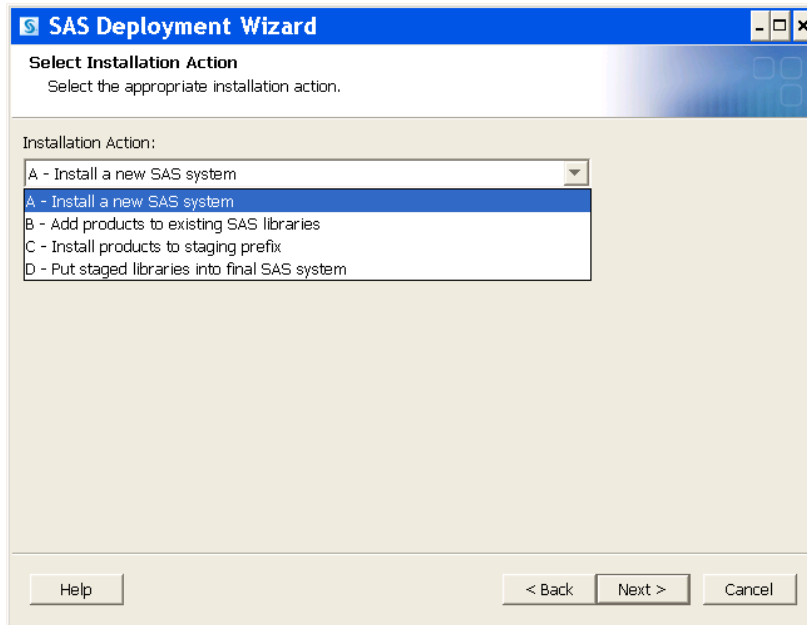
Jobcard 3:
""// TIME=(20,00),REGION=64M ""

Jobcard 4:
""/*""

Jobcard 5:
""/*""

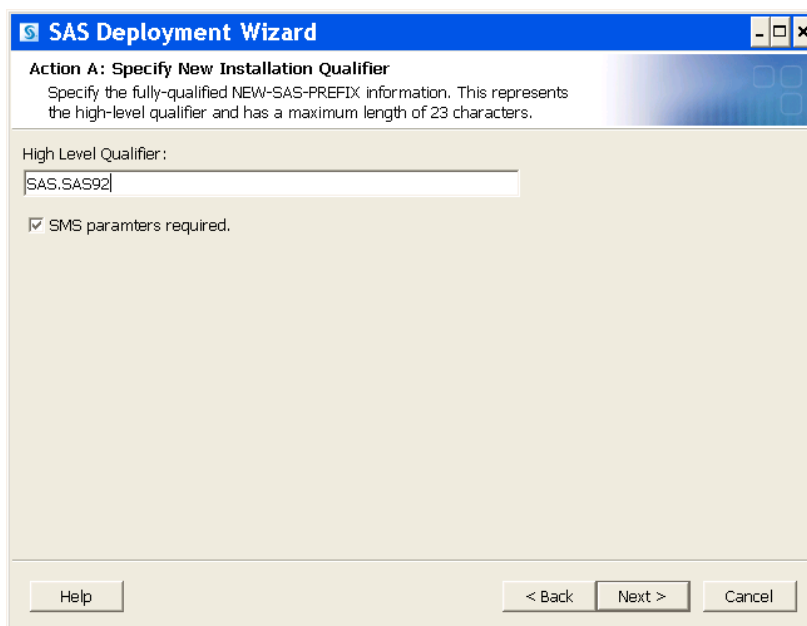
Help < Back Next > Cancel

9. On the Select Installation Action page, select the default option **A: Install a new SAS system** from the list and click **Next**.



10. On the Action A: Specify New Installation Qualifier page, type the value for the High Level Qualifier that you want to use for the SAS product libraries.
11. On the same page, select or clear System Managed Storage (SMS) parameters to specify values for the relevant IBM SMS parameters, and then click **Next**.

If you selected **SMS parameters required**, go to the section "[Selected SMS Parameters Required](#)".
 If you cleared **SMS parameters required**, go to the section "[Cleared SMS Parameters Required](#)".



Selected SMS Parameters Required

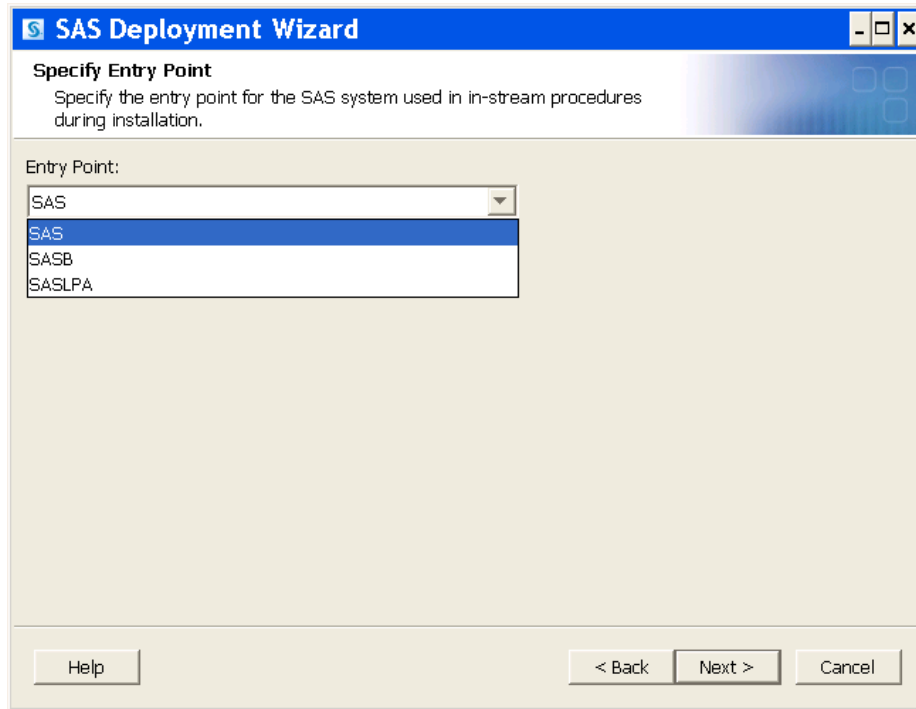
- a. The default SMS values for your site are implemented for the Storage, Management, and Data Class parameters shown on the next page. Specify alternative parameter for these values if you do not want to use the default values. Click **Next**.

The screenshot shows a dialog box titled "SAS Deployment Wizard" with the subtitle "Specify IBM's SMS Parameters". The main text reads: "Specify the Storage Class, Management Class and Data Class values if NOT using your site's default for any of these parameters." There are three text input fields labeled "Storage Class:", "Management Class:", and "Data Class:". At the bottom, there are three buttons: "Help", "< Back", and "Next >", and a "Cancel" button.

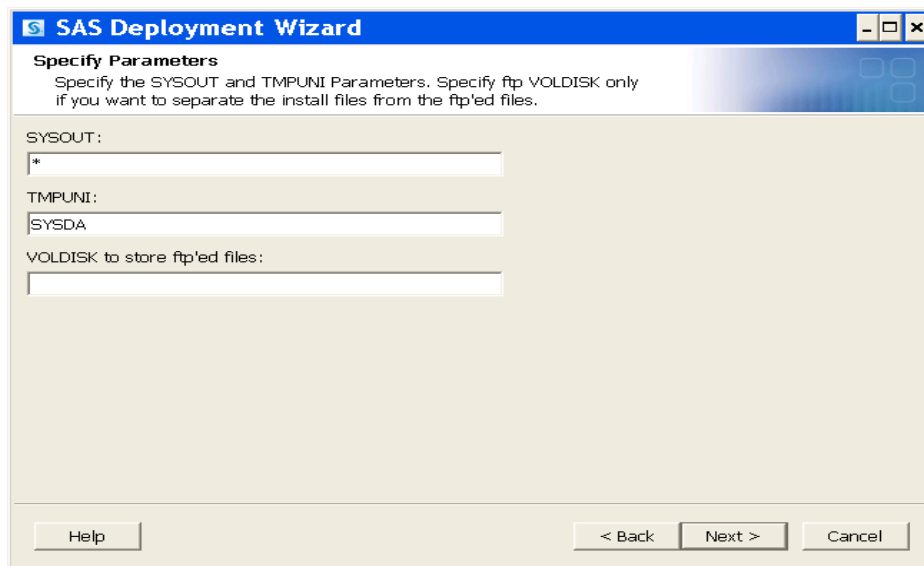
- b. Optionally, update the values for the DISKUNIT, WORKSPC, and INTRDR parameters and click **Next**.

The screenshot shows a dialog box titled "SAS Deployment Wizard" with the subtitle "Specify Parameters". The main text reads: "Specify the DISKUNIT, WORKSPC and INTRDR Parameters." There are three text input fields labeled "DISKUNIT:", "WORKSPC:", and "INTRDR:". The "DISKUNIT" field contains the text "DISK", the "WORKSPC" field contains "1000,500", and the "INTRDR" field contains the code snippet "'DD SYSOUT=(A,INTRDR)'" with double quotes. At the bottom, there are three buttons: "Help", "< Back", and "Next >", and a "Cancel" button.

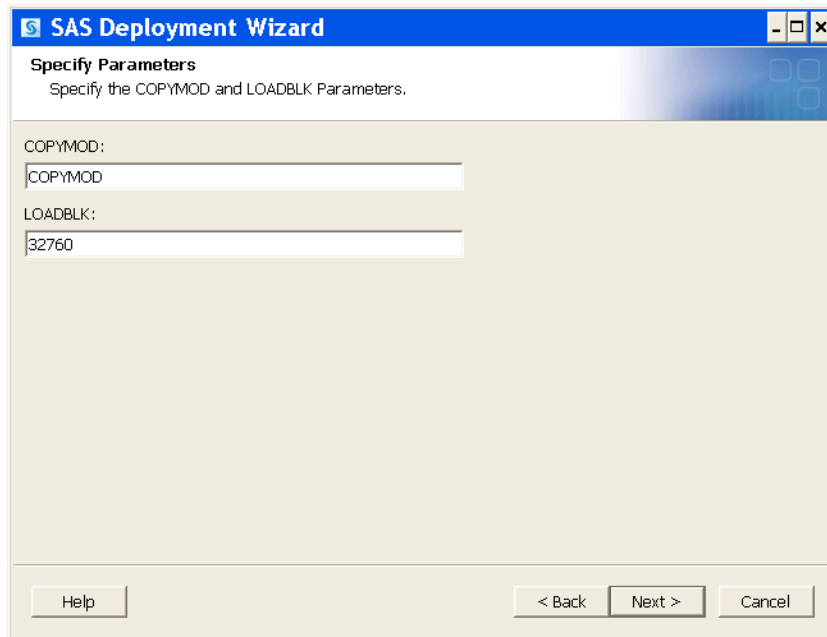
- c. On the Specify Entry Point page, you specify the entry point for the SAS system that is used for in-stream procedures during installation, in the cataloged procedures, and in the CLISTs. On the page menu, there are three mutually exclusive options for the Entry Point. Accept the default entry point, which is SAS. This entry point runs the unbundled version of SAS software. Click **Next**.



- d. On the next page, type the preferred values for the SYSOUT and TMPUNI parameters, and then click **Next**.



- e. On the next page, type the preferred values for the COPYMOD and LOADBLK parameters. The default is COPYMOD. If you use COPY, the load library block size is 6144. Click **Next**.

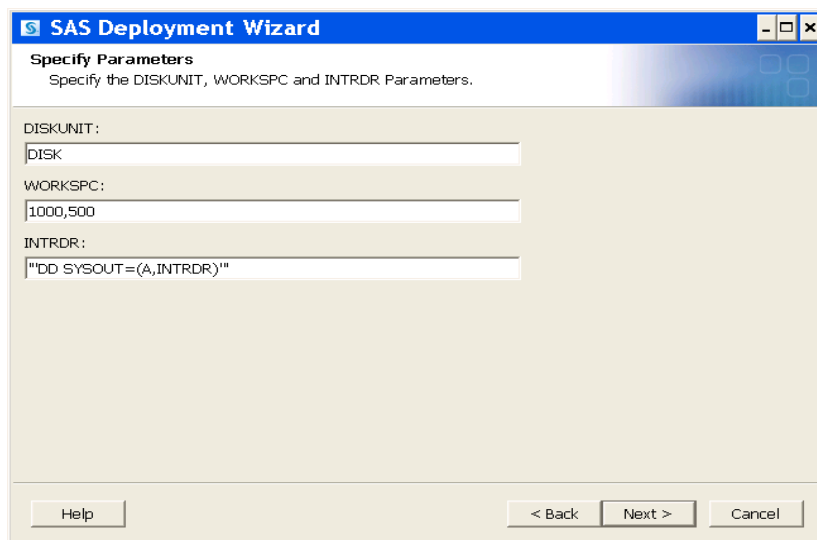


- f. Go to Step 12.

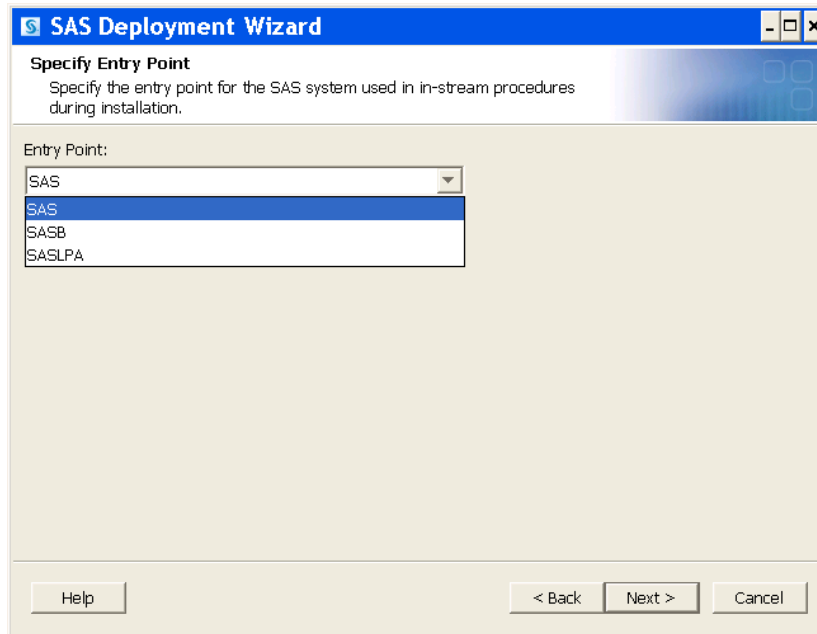
Cleared SMS Parameters Required

Note: If you choose not to invoke System Managed Storage (SMS), verify that you have adequate space to allocate the FTP data sets. One FTP data set that requires 2000 cylinders is &prefix.FTP.Vjuliandate (Ex. SAS.SAS92.FTP.V92D8113).

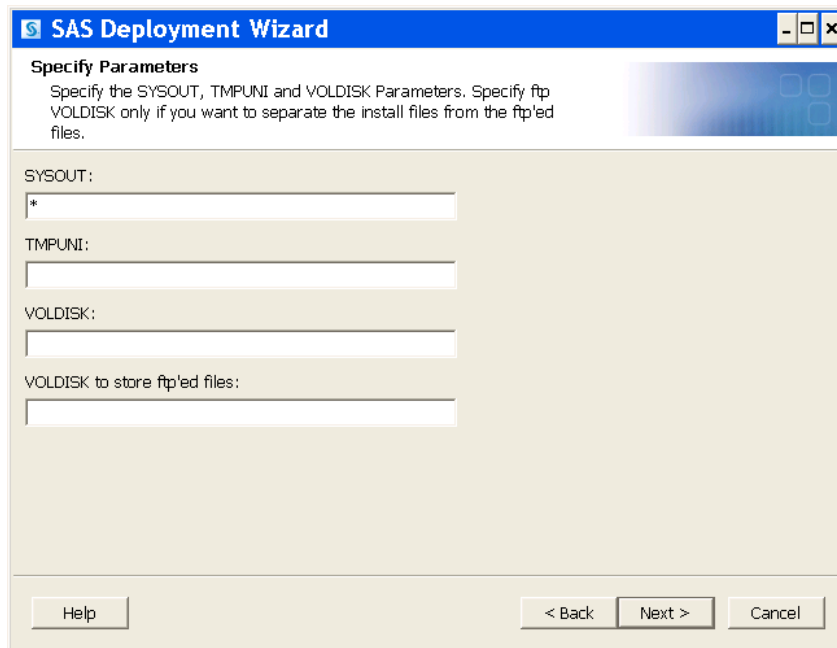
- a. Optionally, update values for the DISKUNIT, WORKSPC, and INTRDR parameters and click **Next**.



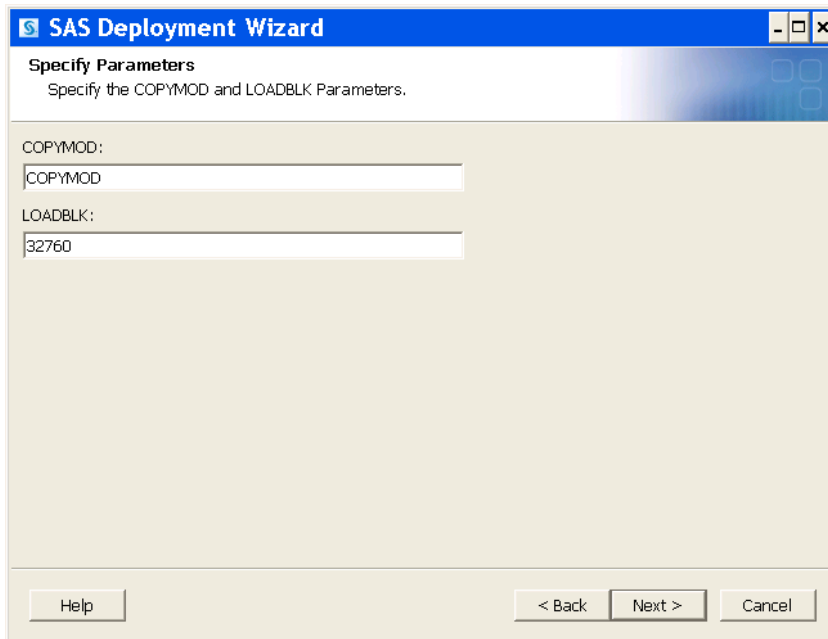
- b. On the Specify Entry Point page, specify the entry point for the SAS system that is used for in-stream procedures during installation, in the cataloged procedures, and in the CLISTs. On the page menu, there are three mutually exclusive options for the Entry Point. Accept the default entry point, which is SAS. This entry point runs the unbundled version of SAS software. Click **Next**.



- c. On the next page, type the preferred values for the SYSOUT, TMPUNI, and VOLDISK parameters and click **Next**.

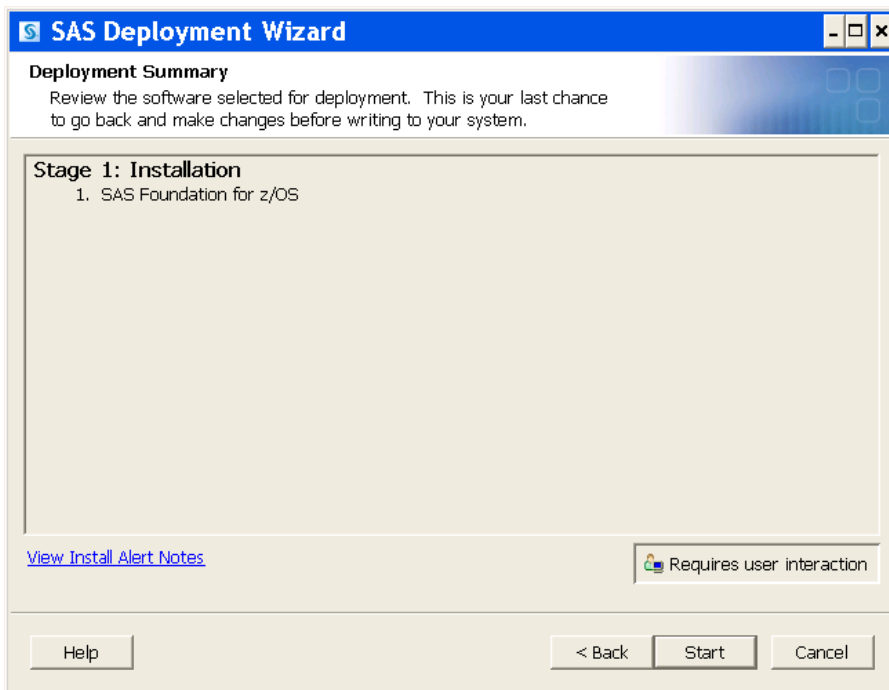


- d. On the next page, type the preferred values for the COPYMOD and LOADBLK parameters. The default is COPYMOD. If you use COPY, the load library block size is 6144. Click **Next**.

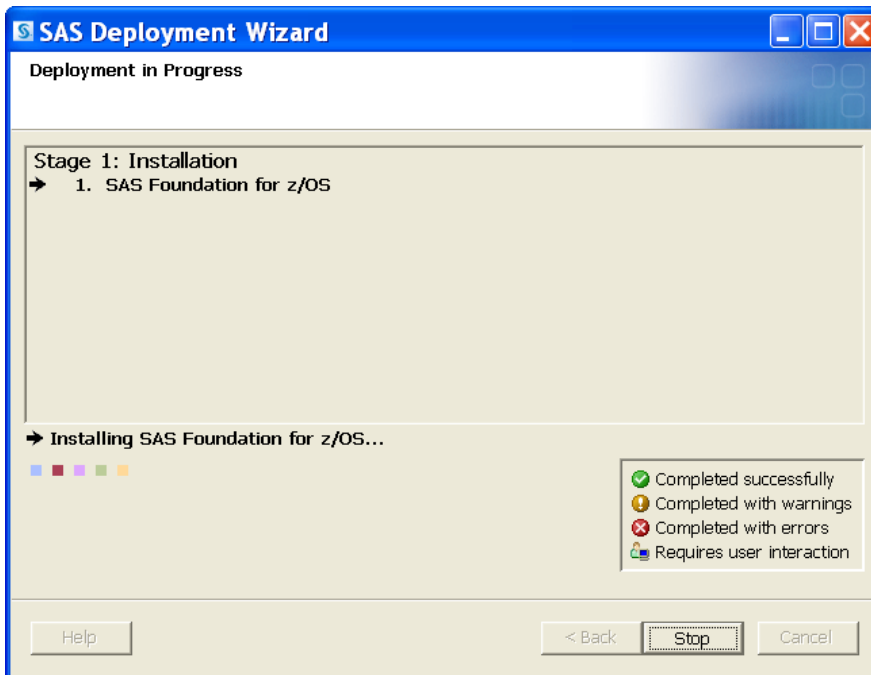


- e. Go to step 12.

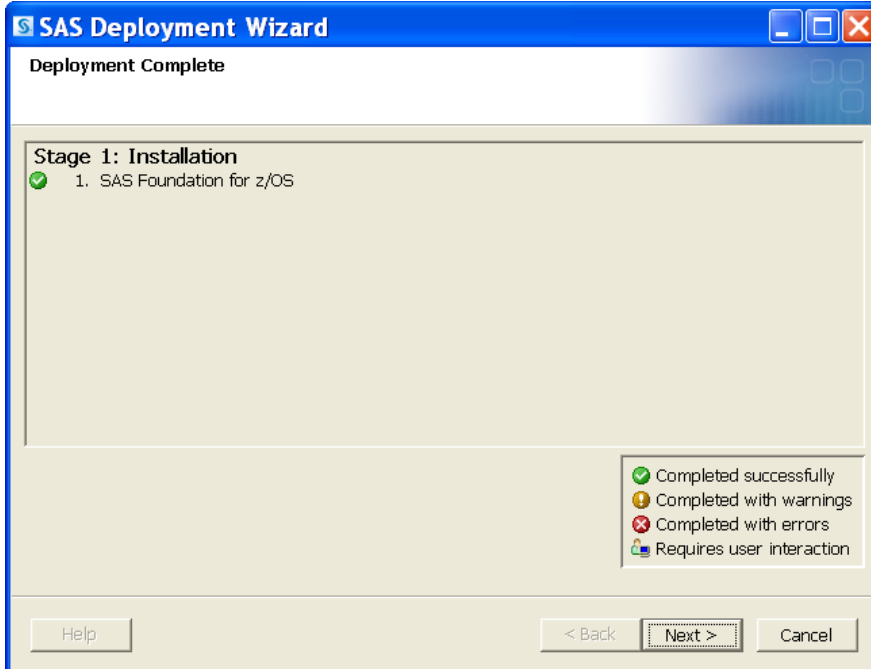
12. Review the information on the Deployment Summary page. Click **Back** to make any changes. Click **Start** to begin writing to your system.



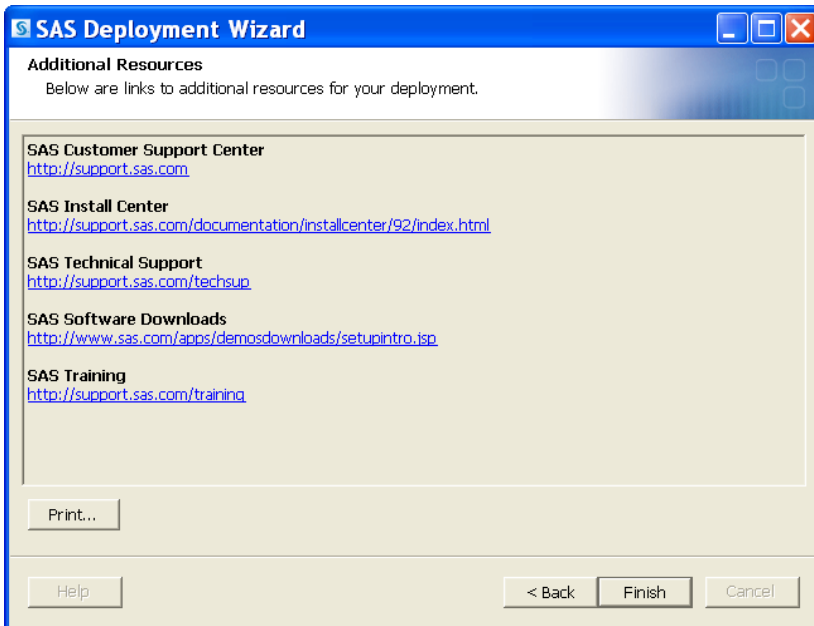
The Deployment in Progress page tracks the deployment process.



13. When the deployment is complete, click **Next**.



14. After reviewing the additional resources for your deployment, click **Finish** to exit the wizard.



When the SAS Deployment Wizard has completed successfully, the symbolic parameters file, the SID file data, and the IEBUPDTE JCL are automatically sent to the mainframe by FTP.

The installation process then launches the IEFBR14 allocation job. If it is successful, the symbolic parameters file and the IEBUPDTE JCL are sent to the mainframe by FTP and the IEBUPDTE job is executed.

The installation process for SAS 9.2 generates the first three jobs with names in the form *user ID1* (for example, SASABC1 with the number 1 appended to the end of the user ID). MKSASINS and \$\$\$NSTR0 are the next two jobs that are submitted to the internal reader. These jobs create a member, JOBINDXA, which resides in the control (CNTL) data set that contains a list of the installation jobs that you now should see running on the mainframe. Upon successful completion of the last job in the list, you are ready to verify the installation by submitting the VALID job located in the CNTL data set.

Troubleshooting

The SAS Deployment Wizard keeps a log of its activities, including both successful operations and notes about any failures that have occurred. While the information contained in those logs is sometimes too complex for you to interpret, the logs are invaluable tools should you need to contact SAS Technical Support.

The log files for all Windows operating systems reside, by default, in the following locations:

1. `%USERPROFILE%\Local Settings\Application Data\SAS\SAS Deployment Wizard\SDW.log`
2. The intermediary file location is `C:\Program Files\SAS\zOSInstall`.

Note: You can generate additional debugging information to the SDW.log file by canceling out of the SAS Download Manager and then taking the following steps:

1. Select **Start ► Programs ► SAS ► SAS Download Manager**.
2. In the Choose Language window, press and release the **2** key on your keyboard, and then click **OK**.
3. Continue installing the SAS Download Manager or creating your SAS Software Depot.

Following this procedure ensures that the SDW.log file contains additional information that might be helpful in debugging the problem. Contact SAS Technical Support for assistance and be prepared to send the Order Number, SAS Installation Key, and sdw.log file.

Resources

SAS Institute Inc. 2008. *Configuration Guide for SAS 9.2 Foundation z/OS*. Available at support.sas.com/documentation/installcenter/sasinstall/9.2/mvs/config.pdf.

SAS Institute Inc. 2008. *SAS Deployment Wizard User's Guide*. Available at support.sas.com/documentation/installcenter/deploywiz/9.2/user.pdf.

SAS Institute Inc. 2008. SAS Note 30950. "General Information and Troubleshooting for Electronic Software Delivery (ESD)". Available at support.sas.com/kb/30/950.html.

SAS Institute Inc. 2008. SAS Note 31850. "Using the LENGTH statement may produce warning and rc=4". Available at support.sas.com/kb/31/850.html.

Appendix

Data Sets Created in SAS® 9.2 (All products available in SAS® Foundation 9.2 Phase 1 for the z/OS Environment)

Total data sets = 210 Tracks = 112,026 (7,468.4 cyls)

	Data Set Prefix	Tracks	% Used	XT
1.	SAS.SAS92.BAMISC	23	100	1
2.	SAS.SAS92.BATANG.TTC	360	98	1
3.	SAS.SAS92.CLIST	3	100	2
4.	SAS.SAS92.CNTL.RENEW	1	100	1
5.	SAS.SAS92.CTMISC	2	100	1
6.	SAS.SAS92.DBCS.LIBRARY	1485	99	1
7.	SAS.SAS92.DBRM	1	100	1
8.	SAS.SAS92.DQ.CASECAP	15	26	1
9.	SAS.SAS92.DQ.CASELWR	15	26	1
10.	SAS.SAS92.DQ.CHOPINFO	120	95	1
11.	SAS.SAS92.DQ.CONFIG	1	100	1
12.	SAS.SAS92.DQ.GRAMMAR	45	75	1
13.	SAS.SAS92.DQ.LOCALE	60	96	1
14.	SAS.SAS92.DQ.PHONETX	15	66	1
15.	SAS.SAS92.DQ.REGEXLIB	15	86	1
16.	SAS.SAS92.DQ.SCHEME	315	96	1
17.	SAS.SAS92.DQ.VOCAB	2205	99	1
18.	SAS.SAS92.ENW0.SASHELP	5550	93	2
19.	SAS.SAS92.ENW0.SASMSG	270	71	1
20.	SAS.SAS92.ESW0.SASHELP	690	98	1
21.	SAS.SAS92.ESW0.SASMSG	75	84	1
22.	SAS.SAS92.ESW0.XREG.TXT	15	40	1
23.	SAS.SAS92.FRW0.SASHELP	780	99	1

	Data Set Prefix	Tracks	% Used	XT
24.	SAS.SAS92.FRW0.SASMSG	75	81	1
25.	SAS.SAS92.FRW0.XREG.TXT	15	40	1
26.	SAS.SAS92.FTP.V92D8113	30000	99	1
27.	SAS.SAS92.FTP.V92D8113.CNTL	75	81	5
28.	SAS.SAS92.FTP.V92D8113.FCCBATH	510	98	2
29.	SAS.SAS92.FTP.V92D8113.FCCO1TH	150	90	1
30.	SAS.SAS92.FTP.V92D8113.NECBASP	45	86	1
31.	SAS.SAS92.FTP.V92D8113.NECGIGM	570	98	2
32.	SAS.SAS92.FTP.V92D8113.NECGRSP	45	71	1
33.	SAS.SAS92.FTP.V92D8113.NECGR8B	210	94	2
34.	SAS.SAS92.FTP.V92D8113.NECGR8C	60	83	1
35.	SAS.SAS92.FTP.V92D8113.NECGR81	210	93	2
36.	SAS.SAS92.FTP.V92D8113.NECGR83	165	91	2
37.	SAS.SAS92.FTP.V92D8113.NECGR84	210	95	2
38.	SAS.SAS92.FTP.V92D8113.NECGR87	195	94	2
39.	SAS.SAS92.FTP.V92D8113.NECGR89	195	97	2
40.	SAS.SAS92.FTP.V92D8113.NECORSP	30	70	1
41.	SAS.SAS92.FTP.V92D8113.NECQCSP	45	100	1
42.	SAS.SAS92.FTP.V92D8113.NECS2SP	30	63	1
43.	SAS.SAS92.FTP.V92D8113.NECTF0A	15	6	1
44.	SAS.SAS92.FTP.V92D8113.NECTF0B	15	6	1
45.	SAS.SAS92.FTP.V92D8113.NECTF0C	15	6	1
46.	SAS.SAS92.FTP.V92D8113.NECTF0D	15	6	1
47.	SAS.SAS92.FTP.V92D8113.NECTF0E	15	6	1
48.	SAS.SAS92.FTP.V92D8113.NECTF9A	15	13	1
49.	SAS.SAS92.FTP.V92D8113.NECTF9B	15	6	1
50.	SAS.SAS92.FTP.V92D8113.NECTF9C	15	20	1
51.	SAS.SAS92.FTP.V92D8113.NECTF9D	615	98	7
52.	SAS.SAS92.FTP.V92D8113.NECTF9E	795	100	9
53.	SAS.SAS92.FTP.V92D8113.NECTF9F	630	99	7

	Data Set Prefix	Tracks	% Used	XT
54.	SAS.SAS92.FTP.V92D8113.NECTF9G	780	99	9
55.	SAS.SAS92.FTP.V92D8113.NECTF9H	780	98	9
56.	SAS.SAS92.FTP.V92D8113.NECTF9I	915	99	11
57.	SAS.SAS92.FTP.V92D8113.NECTF9J	660	99	8
58.	SAS.SAS92.FTP.V92D8113.NECTF9K	795	99	9
59.	SAS.SAS92.FTP.V92D8113.NECTF9L	15	53	1
60.	SAS.SAS92.FTP.V92D8113.NECTF9M	15	6	1
61.	SAS.SAS92.FTP.V92D8113.NECTF9N	15	33	1
62.	SAS.SAS92.FTP.V92D8113.NECTF9O	15	33	1
63.	SAS.SAS92.FTP.V92D8113.NECTF9P	15	53	1
64.	SAS.SAS92.FTP.V92D8113.NECTF9Q	15	40	1
65.	SAS.SAS92.FTP.V92D8113.NECTF9R	15	26	1
66.	SAS.SAS92.FTP.V92D8113.NECTF9S	15	26	1
67.	SAS.SAS92.FTP.V92D8113.NECTF9T	15	40	1
68.	SAS.SAS92.FTP.V92D8113.NECTF9U	15	53	1
69.	SAS.SAS92.FTP.V92D8113.NECTF9V	15	33	1
70.	SAS.SAS92.FTP.V92D8113.NECTF9W	15	40	1
71.	SAS.SAS92.FTP.V92D8113.NECTF9X	15	60	1
72.	SAS.SAS92.FTP.V92D8113.NECTF9Y	225	96	3
73.	SAS.SAS92.FTP.V92D8113.NECTF9Z	465	98	6
74.	SAS.SAS92.FTP.V92D8113.NECTF91	240	95	3
75.	SAS.SAS92.FTP.V92D8113.NECTF92	360	98	4
76.	SAS.SAS92.FTP.V92D8113.NECTF93	300	98	4
77.	SAS.SAS92.FTP.V92D8113.NECTF94	240	95	3
78.	SAS.SAS92.FTP.V92D8113.NECTF95	210	93	3
79.	SAS.SAS92.FTP.V92D8113.NECTF96	210	94	3
80.	SAS.SAS92.FTP.V92D8113.NECTF97	15	6	1
81.	SAS.SAS92.FTP.V92D8113.NECTF98	15	6	1
82.	SAS.SAS92.FTP.V92D8113.NECTF99	15	6	1
83.	SAS.SAS92.FTP.V92D8113.NECWBSP	30	76	1

	Data Set Prefix	Tracks	% Used	XT
84.	SAS.SAS92.FTP.V92D8113.S0CBATH	405	99	2
85.	SAS.SAS92.FTP.V92D8113.S0CGRTH	15	33	1
86.	SAS.SAS92.FTP.V92D8113.S0CO1TH	150	90	1
87.	SAS.SAS92.FTP.V92D8113.W0CASSH	360	96	2
88.	SAS.SAS92.FTP.V92D8113.W0CBASC	15	20	1
89.	SAS.SAS92.FTP.V92D8113.W0CBASH	2205	99	4
90.	SAS.SAS92.FTP.V92D8113.W0CBAXH	90	98	1
91.	SAS.SAS92.FTP.V92D8113.W0CCTSH	15	26	1
92.	SAS.SAS92.FTP.V92D8113.W0CETSH	225	99	2
93.	SAS.SAS92.FTP.V92D8113.W0CGISH	675	97	2
94.	SAS.SAS92.FTP.V92D8113.W0CGNSH	15	20	1
95.	SAS.SAS92.FTP.V92D8113.W0CGRMA	240	95	2
96.	SAS.SAS92.FTP.V92D8113.W0CGRMB	30	96	1
97.	SAS.SAS92.FTP.V92D8113.W0CGRMC	30	93	1
98.	SAS.SAS92.FTP.V92D8113.W0CGRMD	30	96	1
99.	SAS.SAS92.FTP.V92D8113.W0CGRM1	135	95	1
100.	SAS.SAS92.FTP.V92D8113.W0CGRM2	720	99	2
101.	SAS.SAS92.FTP.V92D8113.W0CGRM3	480	99	2
102.	SAS.SAS92.FTP.V92D8113.W0CGRM4	135	89	1
103.	SAS.SAS92.FTP.V92D8113.W0CGRM5	135	93	1
104.	SAS.SAS92.FTP.V92D8113.W0CGRM6	45	82	1
105.	SAS.SAS92.FTP.V92D8113.W0CGRM8	765	99	2
106.	SAS.SAS92.FTP.V92D8113.W0CGRM9	165	92	2
107.	SAS.SAS92.FTP.V92D8113.W0CGRSH	1320	99	3
108.	SAS.SAS92.FTP.V92D8113.W0CLBSH	90	96	1
109.	SAS.SAS92.FTP.V92D8113.W0CMLSH	15	53	1
110.	SAS.SAS92.FTP.V92D8113.W0CMXSH	15	73	1
111.	SAS.SAS92.FTP.V92D8113.W0CORSC	15	73	1
112.	SAS.SAS92.FTP.V92D8113.W0CORSH	15	100	1
113.	SAS.SAS92.FTP.V92D8113.W0CO1SH	135	100	1

	Data Set Prefix	Tracks	% Used	XT
114.	SAS.SAS92.FTP.V92D8113.W0CQCSH	45	91	1
115.	SAS.SAS92.FTP.V92D8113.W0CSTSH	135	92	1
116.	SAS.SAS92.FTP.V92D8113.W0CWBSH	15	100	1
117.	SAS.SAS92.GRMISC	16	100	1
118.	SAS.SAS92.GULIM.TTC	300	98	1
119.	SAS.SAS92.HEIT.TTF	465	98	1
120.	SAS.SAS92.JOBS.OUTPUT	795	84	1
121.	SAS.SAS92.LDBE	1020	0	1
122.	SAS.SAS92.LIBE	645	45	1
123.	SAS.SAS92.LIBRARY	8445	99	1
124.	SAS.SAS92.MINGLIU.TTC	240	95	1
125.	SAS.SAS92.MSGOTHIC.TTC	210	93	1
126.	SAS.SAS92.MSMINCHO.TTC	210	94	1
127.	SAS.SAS92.NEWS	1	100	1
128.	SAS.SAS92.PROCLIB	1	100	1
129.	SAS.SAS92.SAMPSIO	180	92	1
130.	SAS.SAS92.SASGASB.TTF	15	6	1
131.	SAS.SAS92.SASGASBI.TTF	15	6	1
132.	SAS.SAS92.SASGASI.TTF	15	6	1
133.	SAS.SAS92.SASGASR.TTF	15	6	1
134.	SAS.SAS92.SASGSORT.TTF	15	13	1
135.	SAS.SAS92.SASGSYMB.TTF	15	20	1
136.	SAS.SAS92.SASGTSB.TTF	15	6	1
137.	SAS.SAS92.SASGTSBI.TTF	15	6	1
138.	SAS.SAS92.SASGTSI.TTF	15	6	1
139.	SAS.SAS92.SASGTSR.TTF	15	6	1
140.	SAS.SAS92.SASJSANS.TTF	615	98	1
141.	SAS.SAS92.SASJSERF.TTF	795	100	1
142.	SAS.SAS92.SASKSANS.TTF	630	99	1
143.	SAS.SAS92.SASKSERF.TTF	780	99	1

	Data Set Prefix	Tracks	% Used	XT
144.	SAS.SAS92.SASMONO.TTF	15	6	1
145.	SAS.SAS92.SASMONOB.TTF	15	6	1
146.	SAS.SAS92.SASRX	4	100	3
147.	SAS.SAS92.SASRXCFG	2	50	1
148.	SAS.SAS92.SASSAML	15	6	1
149.	SAS.SAS92.SASSSANS.TTF	780	98	1
150.	SAS.SAS92.SASSSERF.TTF	915	99	1
151.	SAS.SAS92.SASTSANS.TTF	660	99	1
152.	SAS.SAS92.SASTSERF.TTF	795	99	1
153.	SAS.SAS92.SASWALB.TTF	15	53	1
154.	SAS.SAS92.SASWALBI.TTF	15	33	1
155.	SAS.SAS92.SASWALI.TTF	15	33	1
156.	SAS.SAS92.SASWALR.TTF	15	53	1
157.	SAS.SAS92.SASWCUB.TTF	15	40	1
158.	SAS.SAS92.SASWCUBI.TTF	15	26	1
159.	SAS.SAS92.SASWCUI.TTF	15	26	1
160.	SAS.SAS92.SASWCUR.TTF	15	40	1
161.	SAS.SAS92.SASWTHB.TTF	15	53	1
162.	SAS.SAS92.SASWTHBI.TTF	15	33	1
163.	SAS.SAS92.SASWTHI.TTF	15	40	1
164.	SAS.SAS92.SASWTHR.TTF	15	60	1
165.	SAS.SAS92.SEMISC	1	100	1
166.	SAS.SAS92.SIMHEI.TTF	225	96	1
167.	SAS.SAS92.SIMSUN.TTC	240	95	1
168.	SAS.SAS92.TKMVSENV	3	100	1
169.	SAS.SAS92.TLKT.ASM.CNTL	1	100	1
170.	SAS.SAS92.TLKT.ASM.LOAD	12	100	2
171.	SAS.SAS92.TLKT.ASM.MACLIB	3	100	1
172.	SAS.SAS92.TLKT.ASM.OBJ	3	100	1
173.	SAS.SAS92.TLKT.ASM.SRC	14	100	1

	Data Set Prefix	Tracks	% Used	XT
174.	SAS.SAS92.TLKT.C.CNTL	2	100	1
175.	SAS.SAS92.TLKT.C.LOAD	58	100	1
176.	SAS.SAS92.TLKT.C.MACLIB	6	100	1
177.	SAS.SAS92.TLKT.C.OBJ	8	100	1
178.	SAS.SAS92.TLKT.C.SRC	17	100	1
179.	SAS.SAS92.TLKT.GLOBAL.BRG	1	100	1
180.	SAS.SAS92.TLKT.GLOBAL.GRM	2	100	1
181.	SAS.SAS92.TLKT.GLOBAL.OBJ	2	100	1
182.	SAS.SAS92.TLKT.GLOBAL.TESTS	3	100	1
183.	SAS.SAS92.TMP.DC.PAX	10005	86	1
184.	SAS.SAS92.TMP.TF.PAX	1500	99	1
185.	SAS.SAS92.TMP.TJ.PAX	12420	33	1
186.	SAS.SAS92.TMP.TNW0.PAX	360	1	1
187.	SAS.SAS92.USAGE.HFAUD	15	6	1
188.	SAS.SAS92.USAGE.LIBRARY	15	6	1
189.	SAS.SAS92.V92D8113.CNTL	257	69	5
190.	SAS.SAS92.V92D8113.CNTL.UTILIB	45	57	1
191.	SAS.SAS92.WEB.TAR	240	98	1
192.	SAS.SAS92.W0.AUTOLIB	135	98	1
193.	SAS.SAS92.W0.MAPS	3375	99	1
194.	SAS.SAS92.W0.SAMPLE	300	95	1
195.	SAS.SAS92.W0.SRVCFG	15	20	1
196.	SAS.SAS92.W0.SRVCLIST	15	20	1
197.	SAS.SAS92.W0.SRVCNTL	15	20	1
198.	SAS.SAS92.W0.SRVENV	15	20	1
199.	SAS.SAS92.W0.SRVPARM	15	20	1
200.	SAS.SAS92.W0.SRVPROC	15	20	1
201.	SAS.SAS92.W0.SRVREXX	15	20	1
202.	SAS.SAS92.W0.TESTS	23	100	1
203.	SAS.SAS92.W0.XREG.TXT	120	96	1

	Data Set Prefix	Tracks	% Used	XT
204.	SAS.SAS92.ZT.FSONG.GFONT	210	93	1
205.	SAS.SAS92.ZT.HEI.GFONT	165	91	1
206.	SAS.SAS92.ZT.KAI.GFONT	210	95	1
207.	SAS.SAS92.ZT.LI.GFONT	195	94	1
208.	SAS.SAS92.ZT.MING.GFONT	195	97	1
209.	SAS.SAS92.ZT.SHING.GFONT	210	94	1
210.	SAS.SAS92.ZT.YUAN.GFONT	60	83	1

Glossary

Electronic Software Download

Electronic Software Download (ESD) provides a method in which to download SAS software.

SAS Deployment Wizard

The SAS Deployment Wizard is the common interface used to install and deploy SAS 9.2 software. Using the SAS Deployment Wizard, you can create and interact with the SAS Software Depot, the repository of files, and data necessary to install your SAS 9.2 software. When the SAS Deployment Wizard is exercised to its full capability, it provides a broad range of deployment opportunities. This includes installing software on a single machine as well as installing on many machines across several tiers, either silently or interactively.

SAS Download Manager

The SAS Download Manager is a Java technology-based client that, once installed, can access the SAS software repository in order to download selected SAS orders.

SAS Software Depot

The SAS Software Depot is a centralized disk copy of your installation media. The SAS Deployment Wizard can invoke a process that will automatically create a SAS Software Depot from any SAS 9.2 installation media you might have.

Software Order E-mail

The Software Order E-mail contains important information about your SAS Software Package and instructions for preparing to install your software. The Software Order E-mail is sent to the SAS Installation Representative at your site.

