

Chapter 1

Introduction to SAS Information Map Studio

What Is SAS Information Map Studio?	1
Overview	1
What Is a SAS Information Map?	1
The SAS Information Map Studio User Interface	2
How Does SAS Information Map Studio Work?	3
Accessibility Features of SAS Information Map Studio 4.2	4

What Is SAS Information Map Studio?

Overview

SAS Information Map Studio provides a graphical user interface that enables you to perform the following tasks:

- create and manage SAS Information Maps
- define how the items in an information map are presented so that they are most relevant to your business user
- run test queries and preview query results
- set various properties and permissions on an information map to control query generation, query execution, and data access

What Is a SAS Information Map?

Overview

A SAS Information Map is a business metadata layer that is applied on top of the data sources in your data warehouse. (Metadata is information about the structure and content of data. An information map does not contain any physical data.) Information maps provide business users with a user-friendly way to query data and get results for themselves.

An information map contains data items and filters, which are used to build queries. A data item can refer to a data field or a calculation. Filters contain criteria for subsetting the data that is returned for a query. Folders can be used to organize the data items and filters so that business users can easily locate information within the information map.

Benefits of SAS Information Maps

An information map provides business users with easy access to enterprise-wide data.

- Information maps shield users from the complexities of data.
- Information maps make data storage transparent to users. It does not matter whether the data is relational or multidimensional, or whether the data is in a SAS data set or in a third-party database system.
- Information maps predefine business formulas and calculations, which makes them usable on a consistent basis.
- Information maps enable users to easily query data for answers to business questions without knowing query languages or being aware of the data model.

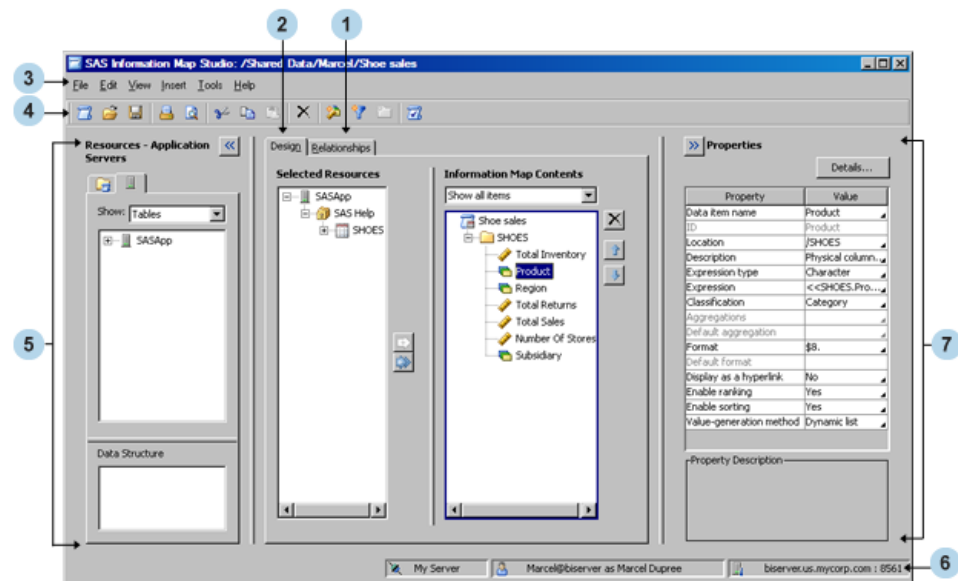
What Software Products Use SAS Information Maps?

An information map can be used by these SAS software products:

- Base SAS software
- SAS AppDev Studio (custom applications developed with)
- SAS Add-In for Microsoft Office
- SAS Enterprise Guide
- SAS Information Delivery Portal
- SAS Marketing Automation
- SAS Web OLAP Viewer for Java
- SAS Web Report Studio
- SAS BI Dashboard





The SAS Information Map Studio User Interface

The SAS Information Map Studio main window consists of these parts:



- 1 The **Relationships** tab displays relational data sources (tables), their columns, and the relationships between data sources. You can create and modify the relationships

between data sources. You can also add or remove data sources. This tab is displayed only for relational information maps.

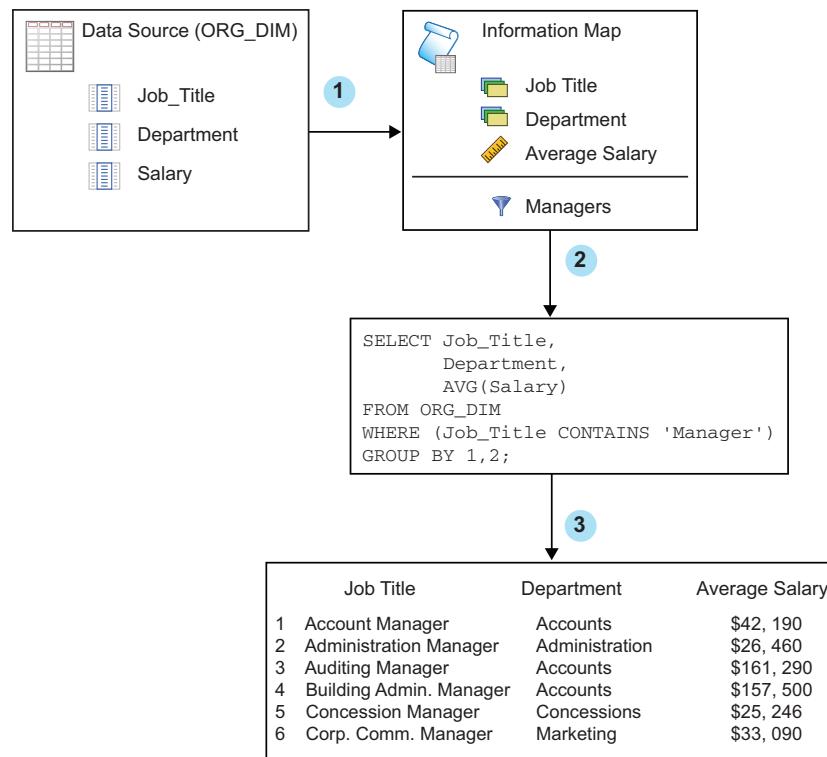
- 2 The **Design** tab displays the currently open information map and its resources. You can modify the information map and change its resource selections.
- 3 The menu bar contains the menus for performing tasks in SAS Information Map Studio.
- 4 The toolbar contains buttons that enable you to quickly access many of the options that are available on the menu bar.
- 5 The **Resources** pane provides access to existing information maps and to resources that you need for creating new information maps. Click  to hide this pane and  to show this pane.
- 6 The status bar displays the name of the connection profile that you used to log on to the metadata server, your identity, and the machine name and port number for the metadata server.
- 7 The **Properties** pane displays the properties of items that you select in the **Resources** pane, on the **Design** tab, or on the **Relationships** tab. You can use the **Properties** pane to modify certain properties. If you select multiple data items, then you can modify all of them at the same time. Click  to hide this pane and  to show this pane.

How Does SAS Information Map Studio Work?

Before you create an information map, make sure that you analyze the information needs of your organization. Those needs become the requirements for your information map.

The first step in creating an information map is adding the data sources, which are references to one or more tables or a single cube (you cannot use both tables and cubes in the same information map). Using the data sources, you can create data items and filters for the information map.

After the information map is created, you can test it in SAS Information Map Studio to ensure that it generates the queries that you expect. The information map can then be saved and used in select SAS software products (see [“What Software Products Use SAS Information Maps?” on page 2](#)). These products use the information map to query the data that is stored in the referenced tables or cube. The resulting set of data can be displayed to your end user in different ways (for example, as a report, a graph, or a data table).

Figure 1.1 The Life Cycle of a Relational SAS Information Map

- 1 The information map in this diagram is created from the columns that the information map's data source references.
- 2 An SQL query is generated from the information map.
- 3 The SQL query is executed to produce a result set.

Accessibility Features of SAS Information Map Studio 4.2

SAS Information Map Studio 4.2 includes accessibility and compatibility features that improve usability of the product for users with disabilities, with exceptions noted in the online Help for the product. These features are related to accessibility standards for electronic information technology that were adopted by the U.S. Government under Section 508 of the U.S. Rehabilitation Act of 1973, as amended.

If you have questions or concerns about the accessibility of SAS products, send e-mail to accessibility@sas.com.

Note:

- For Windows-based assistive technologies to interoperate with SAS Information Map Studio, the Java Access Bridge (JAB) from Sun Microsystems must be installed and configured in the SAS Information Map Studio installation directory. For information about downloading and installing this software, see the *SAS Intelligence Platform: Desktop Application Administration Guide*.

- If you run SAS Information Map Studio on a Citrix server, contact your assistive technology vendor if you have questions about operating assistive technology via a remote server.

