



THE
POWER
TO KNOW.

SAS[®] Sentiment Analysis Studio 12.2 Installation Guide



The correct bibliographic citation for this manual is as follows: SAS Institute Inc. 2012. *SAS® Sentiment Analysis Studio 12.2: Installation Guide*. Cary, NC: SAS Institute Inc.

SAS® Sentiment Analysis Studio 12.2: Installation Guide

Copyright © 2012, SAS Institute Inc., Cary, NC, USA

All rights reserved. Produced in the United States of America.

For a hard-copy book: No part of this publication may be reproduced, stored in a retrieval system, or transmitted, in any form or by any means, electronic, mechanical, photocopying, or otherwise, without the prior written permission of the publisher, SAS Institute Inc.

For a web download or e-book: Your use of this publication shall be governed by the terms established by the vendor at the time you acquire this publication.

The scanning, uploading, and distribution of this book via the Internet or any other means without the permission of the publisher is illegal and punishable by law. Please purchase only authorized electronic editions and do not participate in or encourage electronic piracy of copyrighted materials. Your support of others' rights is appreciated.

U.S. Government Restricted Rights Notice: Use, duplication, or disclosure of this software and related documentation by the U.S. government is subject to the Agreement with SAS Institute and the restrictions set forth in FAR 52.227-19, Commercial Computer Software-Restricted Rights (June 1987).

SAS Institute Inc., SAS Campus Drive, Cary, North Carolina 27513.

1st electronic book, November 2012

SAS provides a complete selection of books and electronic products to help customers use SAS® software to its fullest potential. For more information about our e-books, e-learning products, CDs, and hard-copy books, visit support.sas.com/bookstore or call 1-800-727-3228.

SAS® and all other SAS Institute Inc. product or service names are registered trademarks or trademarks of SAS Institute Inc. in the USA and other countries. ® indicates USA registration.

Other brand and product names are registered trademarks or trademarks of their respective companies.

Contents

1 Installing SAS Sentiment Analysis Studio	1
1.1 Audience	1
1.2 Conventions	1
1.3 What Is SAS Sentiment Analysis Studio?	2
1.4 Overview of Installation	2
1.5 Prerequisite System Requirements	3
1.6 Installing SAS Sentiment Analysis Studio	4
1.6.1 Installing on a Machine Running UNIX	4
1.6.2 Install on a Machine Running Windows	4
1.6.3 Specify the Path to the SAS License	8
1.7 Uninstall on Windows	9
1.8 Using the Same Installation Folder	10
A Recommended Reading	11
Index	13

Installing SAS Sentiment Analysis Studio

- *Audience*
- *Conventions*
- *What Is SAS Sentiment Analysis Studio?*
- *Overview of Installation*
- *Prerequisite System Requirements*
- *Installing SAS Sentiment Analysis Studio*
- *Uninstall on Windows*
- *Using the Same Installation Folder*

1.1 Audience

SAS Sentiment Analysis Studio: Installation Guide is designed for users who install this software.

1.2 Conventions

This manual uses the following typographical conventions:

Convention	Description
TGM_ROOT	The root directory where SAS Sentiment Analysis Studio is installed, typically the following: Windows: C:/Program Files/Teragram/SAM UNIX: /opt/SAS Sentiment Analysis Studio

Convention	Description
Next button	The labels for user interface controls are shown in a bold, sans-serif font.
www.sas.com	The hypertext links are shown in a light blue, fixed-width font, and are underlined.

1.3 What Is SAS Sentiment Analysis Studio?

SAS Sentiment Analysis Studio is a comprehensive solution to the multi-faceted challenges of analyzing sentiment in input documents. SAS Sentiment Analysis Studio automatically evaluates sentiment, when a feeling is expressed about anything. This sentiment can apply to any object, person, event, or experience. However, sentiment can also apply to features and attributes. For the purposes of this document, these objects, persons, events, or experiences are referred to as products and their attributes are referred to as features.

SAS Sentiment Analysis Studio evaluates input documents to analyze whether the expressed sentiment is positive, negative, or neutral. SAS Sentiment Analysis Studio also extracts the critical comments that alert you to product and feature trends early in the life cycle of a product.

1.4 Overview of Installation

Installation is a two-part process. The first part involves checking your hardware against the hardware requirements. During the second part of the process, you access the installation wizard and use these pages to install SAS Sentiment Analysis Studio.

You can install SAS Sentiment Analysis Studio for each language that you purchased. However, each project is built using only one language. The default installer contains support for the English language.

1.5 Prerequisite System Requirements

Configure the local machine where you install SAS Sentiment Analysis Studio according to the recommended system configuration:

CPU

x86 with 1 GHz or higher required. 2+ CPUs of 2 GHz or higher, each, are recommended.

RAM

1 GB or higher is recommended, but this base number depends on the size of the project that you load

Table 1-1: Supported Operating Systems

Operating System	Platform
Linux, (Red Hat 7.x, 8, 9, Fedora 1-3, RHEL 2.1 and higher), SUSE	x86, x86-64
IBM AIX	PPC
FreeBSD	x86
HP-UX 32	PA-RISC
Sun Solaris (32-bit)	x86
Sun Solaris (32-bit)	SPARC
Sun Solaris (64-bit)	UltraSPARC
Tru64 UNIX	HP Alpha
Windows (32-bit)	x86
Windows (64-bit)	x86-64

1.6 Installing SAS Sentiment Analysis Studio

1.6.1 Installing on a Machine Running UNIX

SAS Sentiment Analysis Studio is distributed on UNIX systems as a `tar` archive. To install the software, use the following UNIX commands:

```
gzip -d installKit.tar.gz
tar -xvpf installKit.tar
```

The `-d` switch in the `gzip` command line decompresses the distribution file (this file has been compressed to save space) in preparation for the expansion of the archive `tar` file. The switches on the `tar` command are used to extract the contents from the specified `tar` file and to preserve the file and directory permissions of the contents.

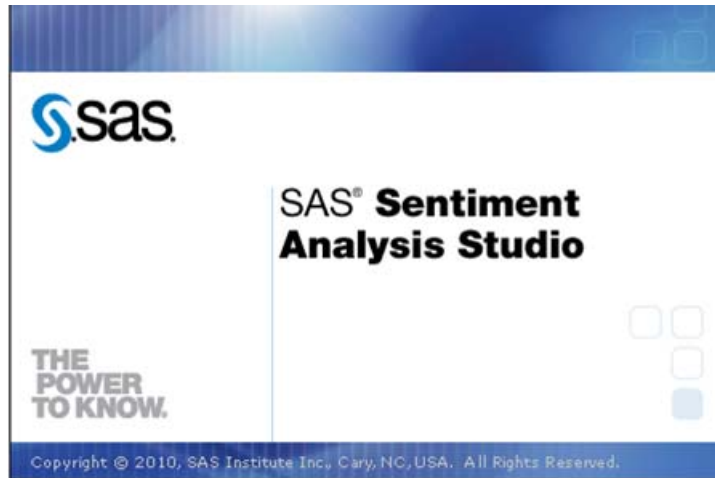
Note: The actual name of your `tar` file might vary from that shown in the example.

Additional information about using the `gzip` and `tar` commands is available in the UNIX `man` pages.

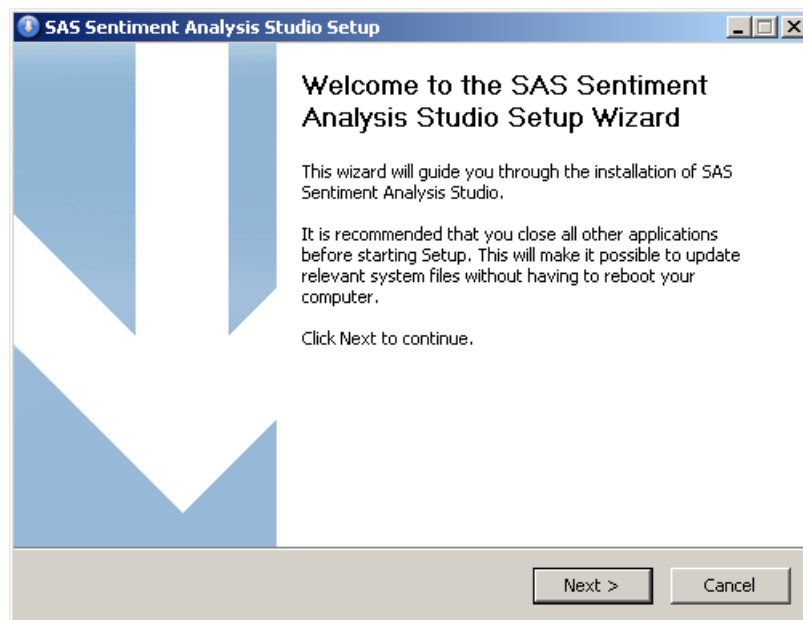
1.6.2 Install on a Machine Running Windows

To install SAS Sentiment Analysis Studio on a machine running Windows, complete these steps:

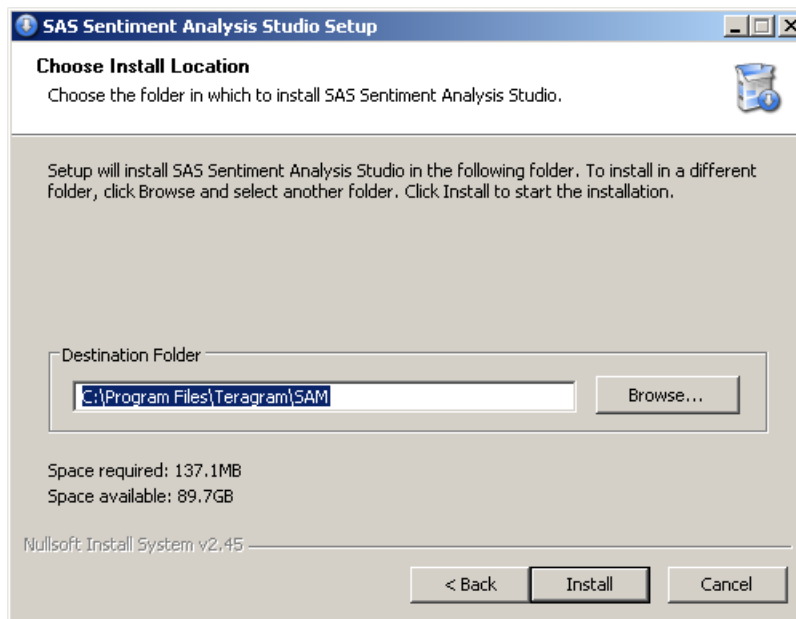
1. Double-click `SAS_SentAnalysis_Studio_Setup.exe` and the installation wizard appears.



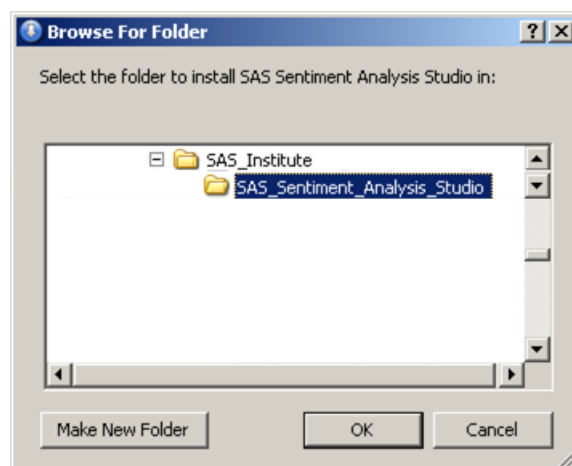
The Welcome to SAS Sentiment Analysis Studio Wizard page appears.



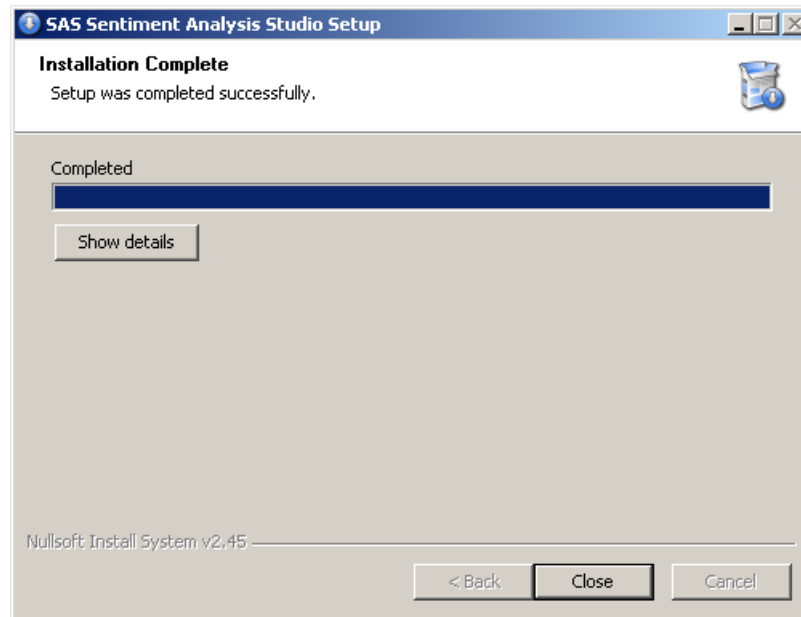
2. Click **Next** and the Choose Install Location page appears.



3. (Optional) Click **Browse** and the Browse For Folder dialog box appears. Use this window to set the path to an installation location.

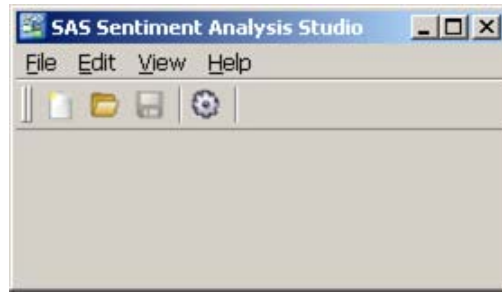


-
- a. (Optional) Select a different installation folder.
 - b. (Optional) Click **Make New Folder**.
 - c. Click **OK** to exit this dialog box.
4. Compare **Space required** with **Space available** in the Choose Install Location page to ensure that there is enough room on your hard drive for the application.
 5. Click **Install** and the Installation Complete page appears.



6. (Optional) To see a list of the extracted files, click **Show details**.

-
7. Click **Close** and the SAS Sentiment Analysis Studio user interface appears.

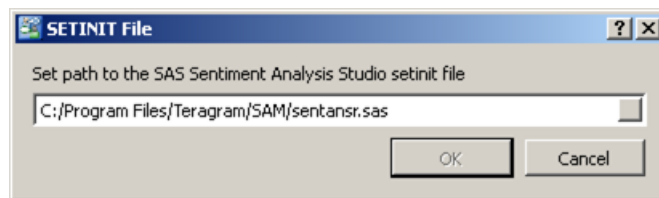


1.6.3 Specify the Path to the SAS License


Specify the path to the SAS license using this section. This license is the SAS installation data file (SID file) that is included in the Software Order E-mail (SOE) that you received. Save this setinit file, `setansr.sas`, to a directory on your hard drive that is easily accessible to SAS Sentiment Analysis Studio.

To set the path to the SAS licensing file, complete these steps after you install SAS Sentiment Analysis Studio:

1. Select **Programs --> SAS Sentiment Analysis Studio**. The SETINIT File dialog box appears.



2. Locate the `sentansr.sas` license file that you saved. Type the path to the file into the **Set path to the SAS Sentiment Analysis Studio setinit file** field.

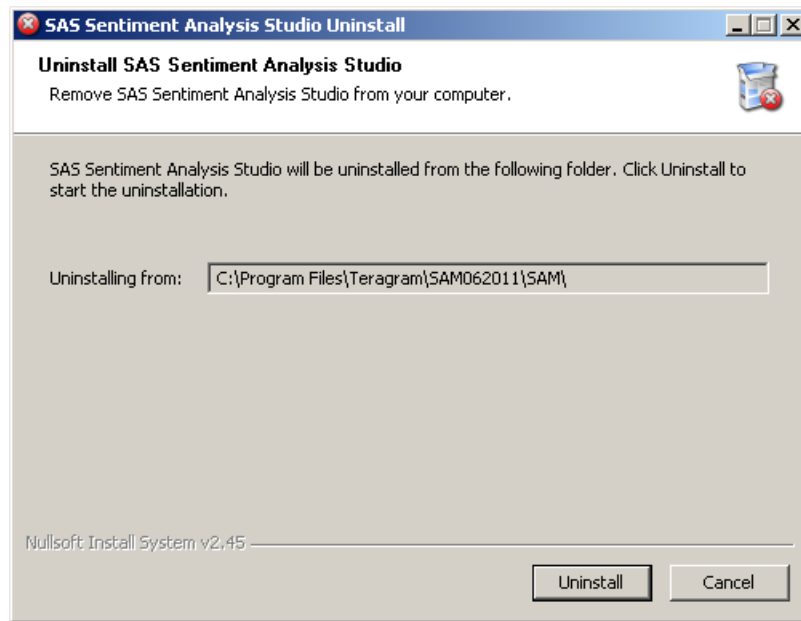
(Optional) Click  and the Select a file dialog box appears. Select the license file and click **Open**.

-
3. Click **OK**. The untitled SAS Sentiment Analysis Studio user interface appears. See Step 7. on page 8.

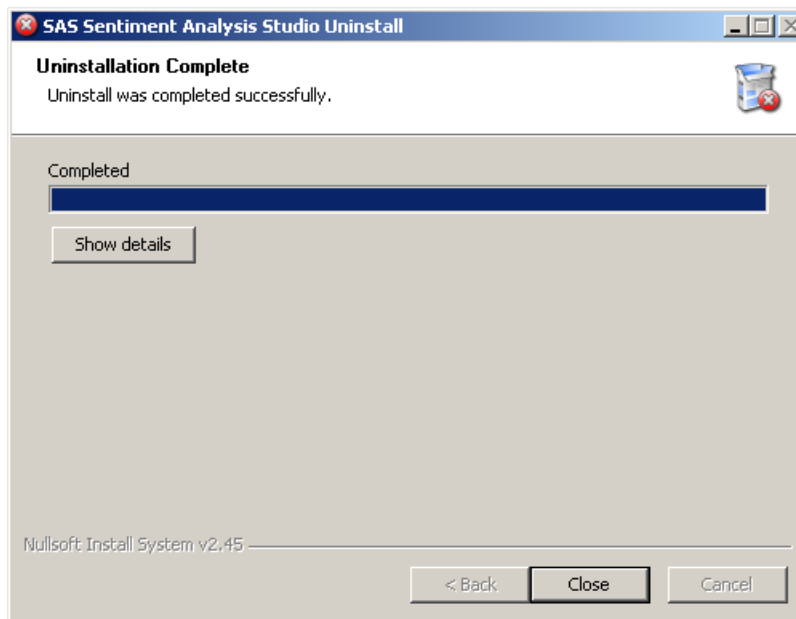
1.7 Uninstall on Windows

To uninstall the SAS Sentiment Analysis Studio software on a Microsoft Windows system, complete these steps:

1. Select **Start --> Programs --> SAS Sentiment Analysis Studio --> Uninstall SAS Sentiment Analysis Studio**. The SAS Sentiment Analysis Studio Uninstall wizard appears.



-
2. Click **Uninstall**. The Uninstallation Complete page appears.



3. (Optional) Click **Show details** to see a list of the uninstalled files.
4. Click **Close** after the uninstall process is completed.

1.8 Using the Same Installation Folder

If you want to access the projects that you created with an earlier installation, use the folder that you used with the former installation for the new installation.

Appendix: A

Recommended Reading

The following book is recommended as a companion guide:

SAS Sentiment Analysis Studio: User's Guide: Use SAS Sentiment Analysis Studio to locate sentiment in input documents.

SAS offers instructor-led training and self-paced e-learning courses to help you get started with the SAS add-in, learn how the SAS add-in works with the other products in the SAS Enterprise Intelligence Platform, and learn how to run stored processes in the SAS add-in.

For more information about the courses available, see support.sas.com/training.

For a complete list of SAS publications, see the current SAS Publishing Catalog. To order the most current publications or to receive a free copy of the catalog, contact a SAS representative at

SAS Publishing Sales

SAS Campus Drive

Cary, NC 27513

Telephone: (800) 727-3228*

Fax: (919) 677-8166

E-mail: sasbook@sas.com

Web address: support.sas.com/pubs

* For other SAS Institute business, call (919) 677-8000.

Customers outside the United States should contact their local SAS office.

Index

E

extracted files, seeing7

I

installation

choosing the install folder6

for multiple languages2

on UNIX using `gzip` command4

on Windows4-8

processes overview2

seeing extracted files7

selecting a location6

using the old install folder10

S

SAS license, locating, saving, and setting the path to8

SAS Sentiment Analysis Studio, gaining an overview2

show details, seeing extracted file list7

space required, comparing with space available7

system requirements, understanding3

T

typographical conventions, for this manual1

U

uninstalled files, see10

W

Windows, uninstalling	9-10
-----------------------------	------