



THE
POWER
TO KNOW®

SAS® Quality Knowledge Base for Contact Information 24

Installation and Configuration Guide

The correct bibliographic citation for this manual is as follows: SAS Institute Inc. 2014. *SAS® Quality Knowledge Base for Contact Information 24: Installation and Configuration Guide*. Cary, NC: SAS Institute Inc.

SAS® Quality Knowledge Base for Contact Information 24: Installation and Configuration Guide

Copyright © 2014, SAS Institute Inc., Cary, NC, USA

All rights reserved. Produced in the United States of America.

For a hard-copy book: No part of this publication may be reproduced, stored in a retrieval system, or transmitted, in any form or by any means, electronic, mechanical, photocopying, or otherwise, without the prior written permission of the publisher, SAS Institute Inc.

For a web download or e-book: Your use of this publication shall be governed by the terms established by the vendor at the time you acquire this publication.

The scanning, uploading, and distribution of this book via the Internet or any other means without the permission of the publisher is illegal and punishable by law. Please purchase only authorized electronic editions and do not participate in or encourage electronic piracy of copyrighted materials. Your support of others' rights is appreciated.

U.S. Government License Rights; Restricted Rights: The Software and its documentation is commercial computer software developed at private expense and is provided with RESTRICTED RIGHTS to the United States Government. Use, duplication or disclosure of the Software by the United States Government is subject to the license terms of this Agreement pursuant to, as applicable, FAR 12.212, DFAR 227.7202-1(a), DFAR 227.7202-3(a) and DFAR 227.7202-4 and, to the extent required under U.S. federal law, the minimum restricted rights as set out in FAR 52.227-19 (DEC 2007). If FAR 52.227-19 is applicable, this provision serves as notice under clause (c) thereof and no other notice is required to be affixed to the Software or documentation. The Government's rights in Software and documentation shall be only those set forth in this Agreement.

SAS Institute Inc., SAS Campus Drive, Cary, North Carolina 27513-2414.

November 2014

SAS provides a complete selection of books and electronic products to help customers use SAS® software to its fullest potential. For more information about our offerings, visit support.sas.com/bookstore or call 1-800-727-3228.

SAS® and all other SAS Institute Inc. product or service names are registered trademarks or trademarks of SAS Institute Inc. in the USA and other countries. ® indicates USA registration.

Other brand and product names are trademarks of their respective companies.

Table of Contents

- Choosing Your Download and Installation Options.....2**
 - Downloading and Installing with SAS Deployment Wizard2
 - Downloading and Installing Using Downloads Site..... 15
- Merging with an Existing QKB29**
- Configuring Data Jobs30**

Choosing Your Download and Installation Options

SAS Quality Knowledge Base (QKB) for Contact Information (CI) 24 introduces the SAS Deployment Wizard. The SAS Deployment Wizard might be used when installing the QKB as a part of a larger purchase, like with DataFlux Data Management Studio.

- [Downloading and Installing with SAS Deployment Wizard](#)

You can also continue to download and install the SAS QKB CI using the Windows or UNIX instructions provided in this document.

- [Downloading and Installing Using Downloads Site](#)

Downloading and Installing with SAS Deployment Wizard

You can install the SAS Quality Knowledge Base (QKB) for Contact Information (CI) 24 as a part of a larger SAS software order, such as when you install DataFlux Data Management Studio. The steps for installing SAS QKB CI are described in this section.

Using the Software Order Email

When you receive your licensed SAS software, you receive a Software Order Email (SOE) that describes how to install your order and provides links to tools that can assist you during the installation process.

Download the SAS Download Manager. The SAS Download Manager is the application that you use to download your software. Follow the link in your SOE to download and install your SAS Download Manager.

The SAS Download Manager prompts you through a series of windows and dialog boxes that ask you to launch the SAS Download Manager, insert the order number listed in your SOE, and log in to the SAS Installer account. You then review the software for your order. The SAS Download Manager downloads your software to the SAS Software Depot, which is a repository for your SAS software media. If you do not have a SAS Software Depot, SAS Download Manager creates one for you.

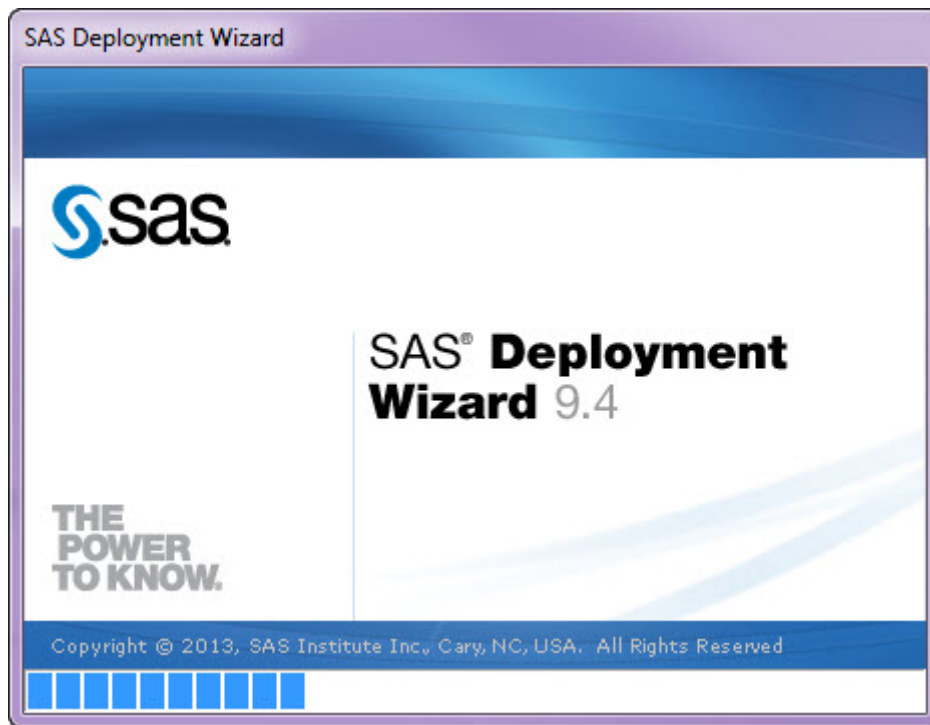
After the SAS Download Manager downloads the SAS software, return to the SOE for further instructions. Follow the steps in the SOE to begin your SAS installation. The instructions vary depending on your operating system.

Using the SAS Deployment Wizard

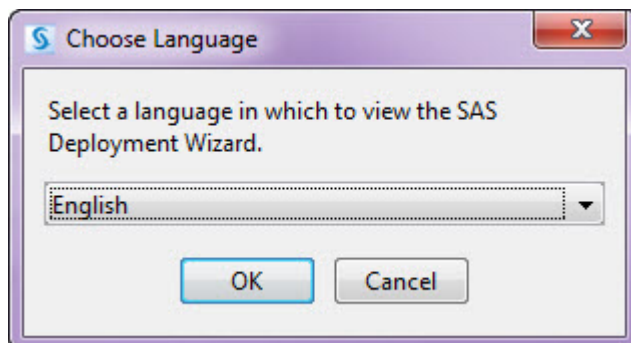
The SAS Deployment Wizard is the application that guides you through the installation of your SAS software. The following installation example is for SAS QKB CI 24.

To install and configure your SAS QKB CI 24 interactively, follow these steps:

1. Log on to your machine with a user ID using the SAS Installer account that you created when you installed and ran the SAS Download Manager. Or, use an account where you are a member of the Windows Administrators group.
2. Temporarily disable anti-virus, anti-malware, anti-spyware, and firewall software. These types of programs can interfere with the installation process and block files as they are being copied and extracted.
3. Start Windows Explorer.
4. Navigate to the highest-level directory in your SAS Software Depot.
5. Right-click setup.exe.
6. Select **Run as Administrator**. The SAS Deployment Wizard opens and begins.



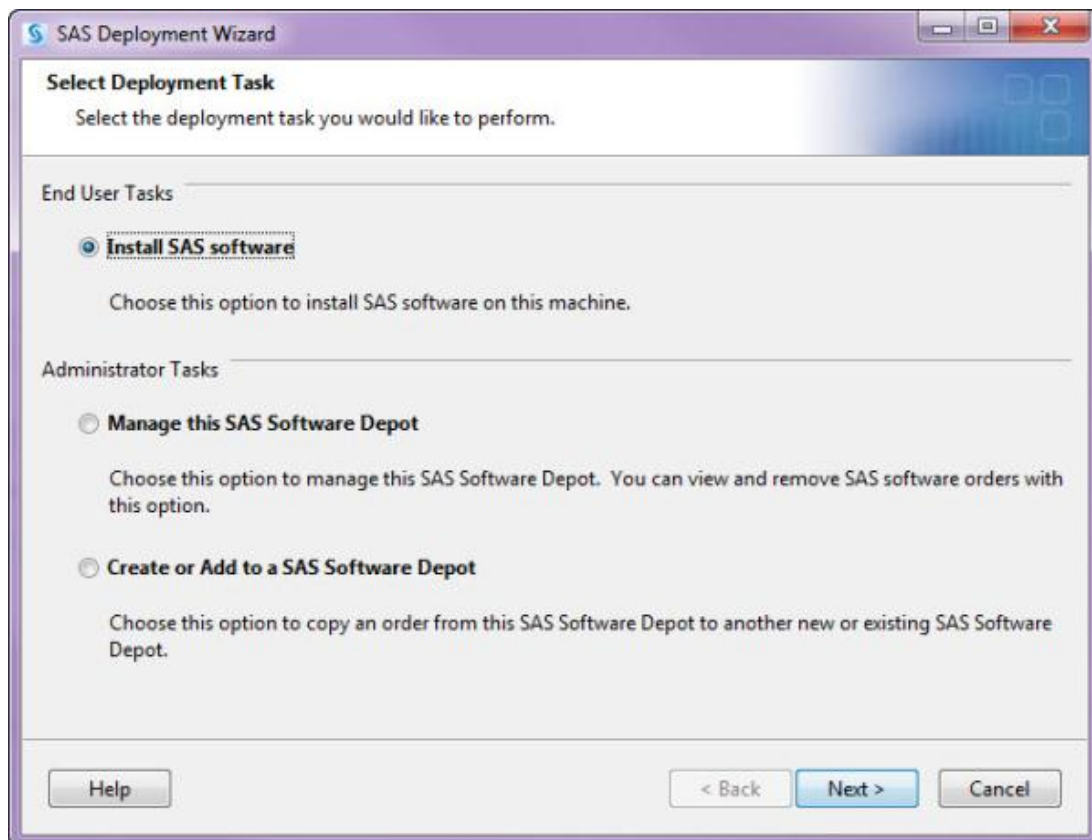
7. On the **Choose Language** page, select the language that you want the SAS Deployment Wizard to use when it displays text.



8. Click **OK**.

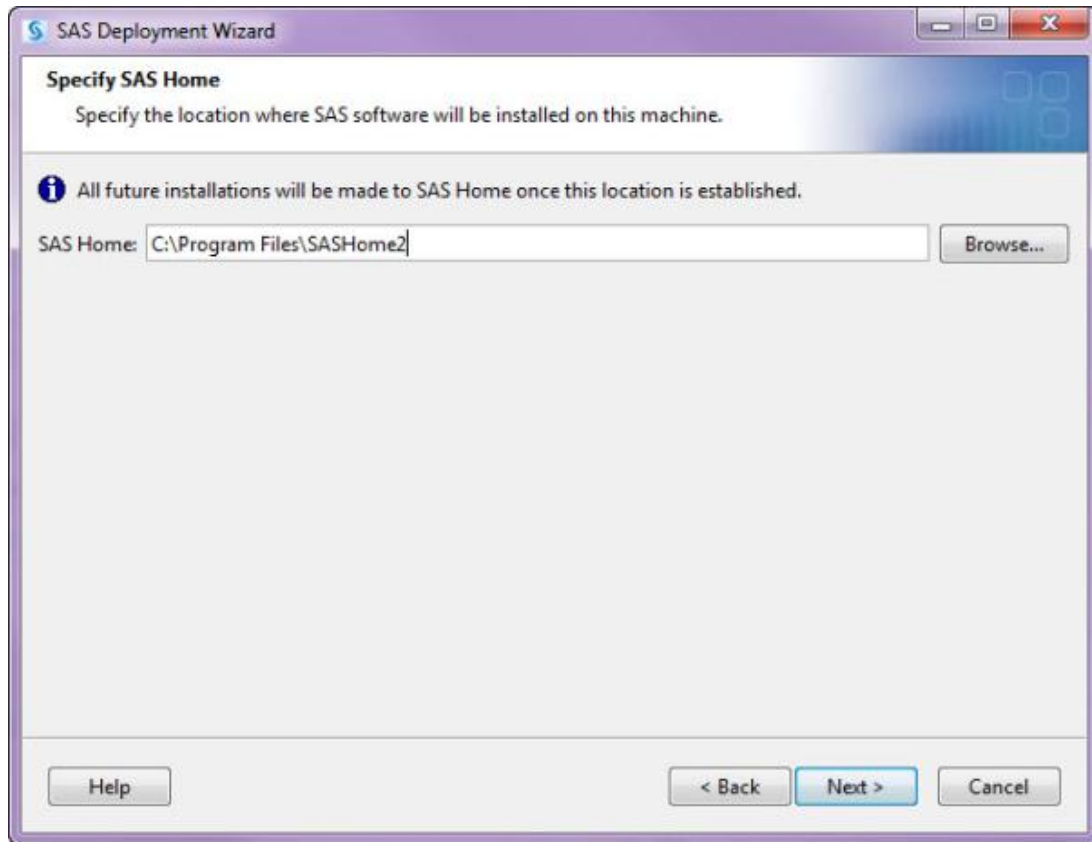


9. On the **Select Deployment Task** page, under **End User Tasks**, select **Install SAS software**.

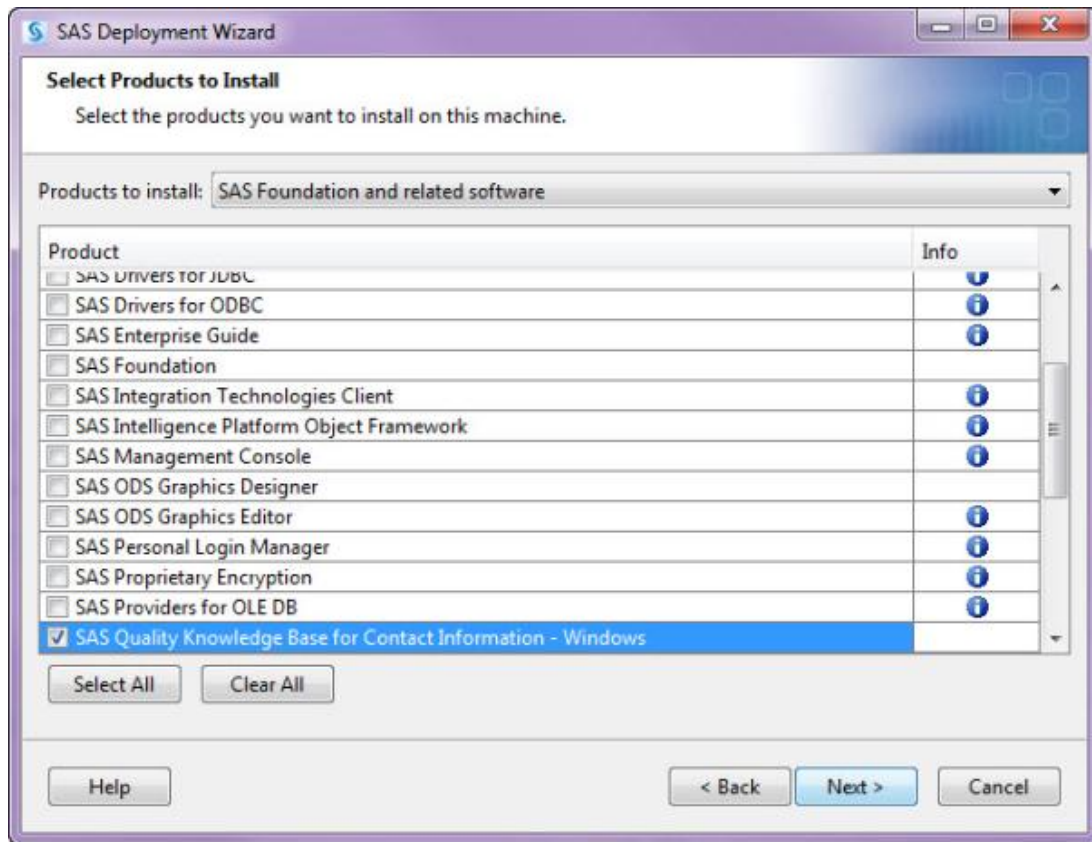


10. Click **Next**.

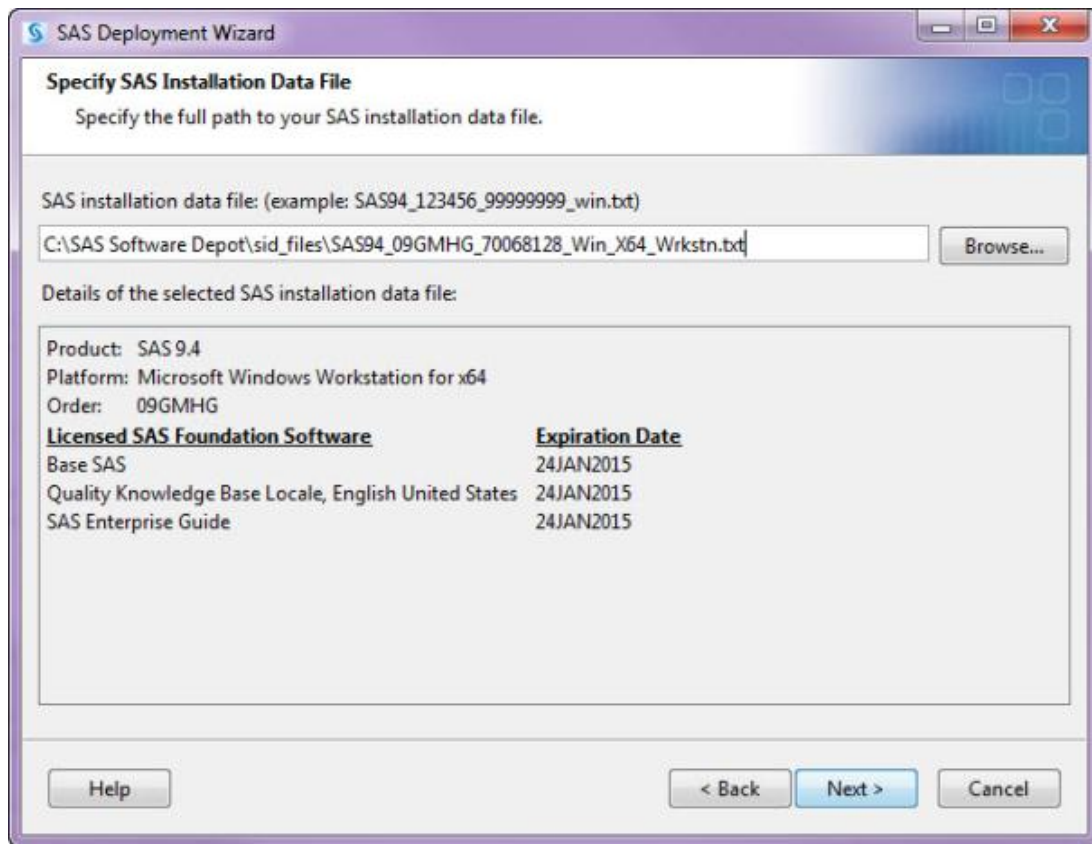
11. On the **Specify SAS Home** page, specify the location where your SAS software will be installed. Click **Browse**, if you want to navigate to a location.



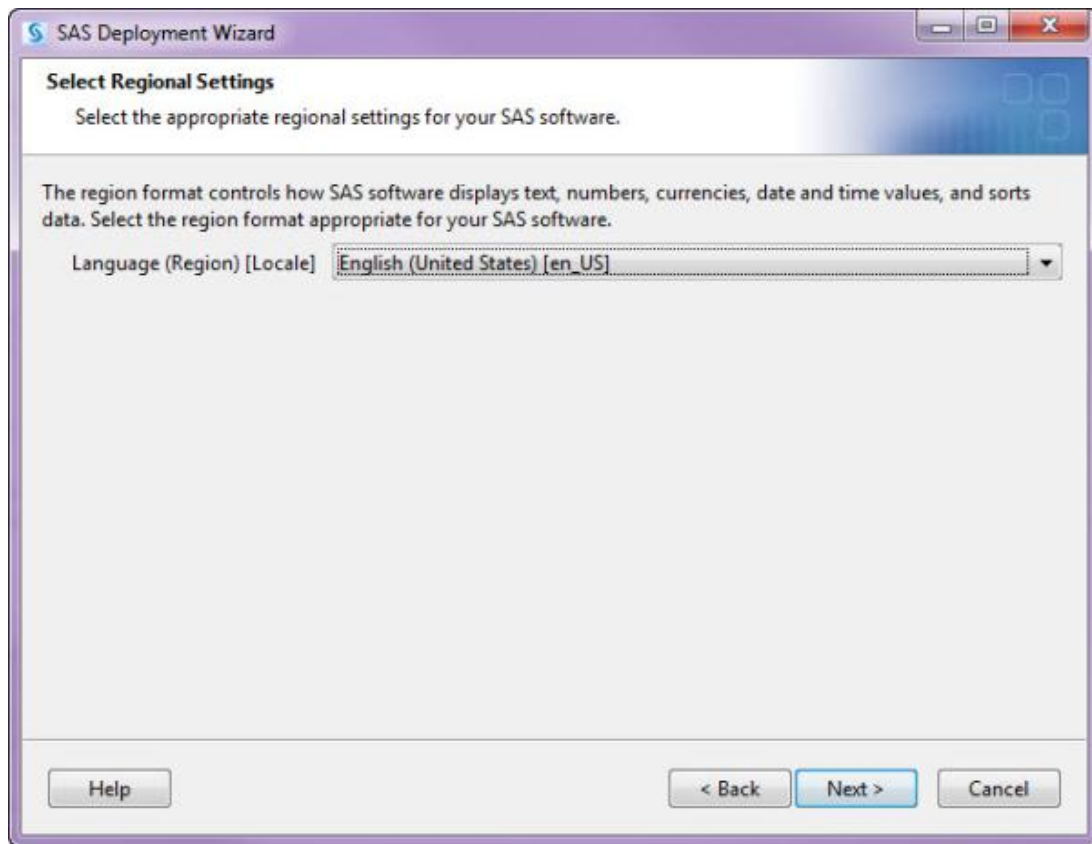
12. Click **Next**.
13. On the **Select Product to Install** page, use the scroll bar on the right to locate the SAS software products you want to install. This is where you should select the box for **SAS Quality Knowledge Base for Contact Information**.



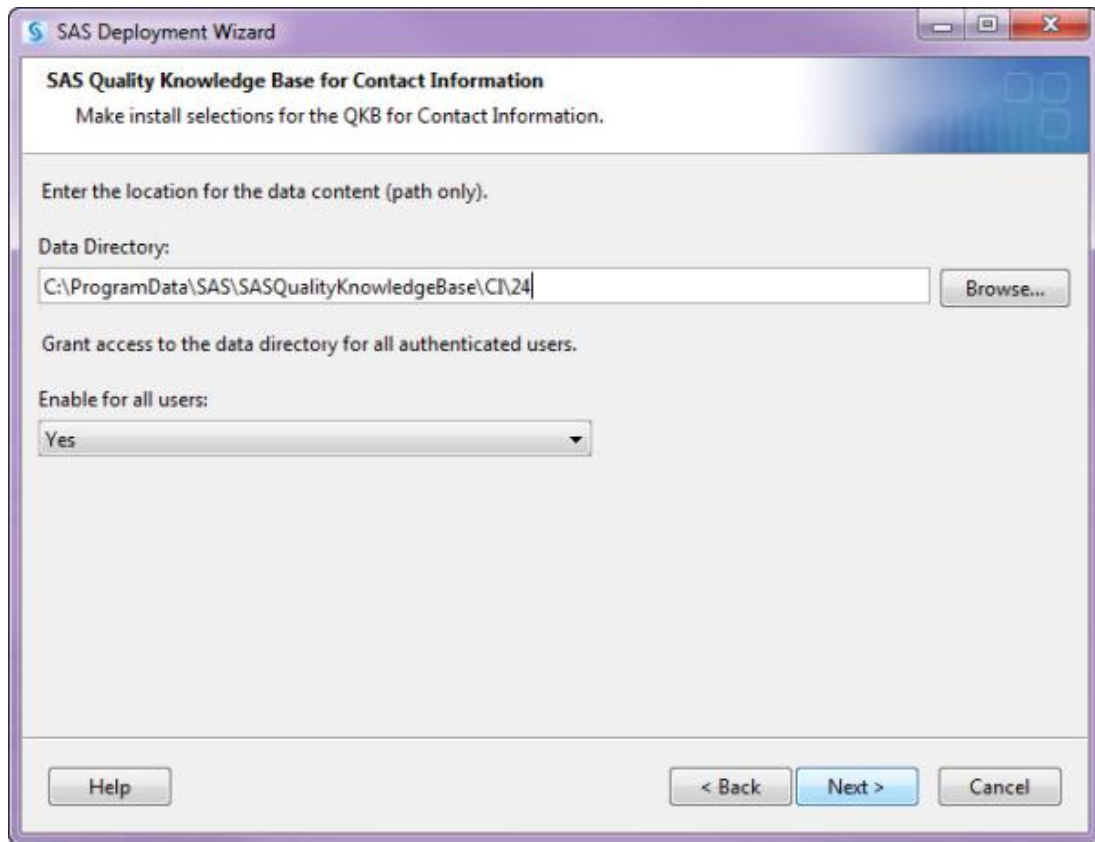
14. Click **Next**.
15. On the **Specify SAS Installation Data File** page, specify the full path of the location where your SAS installation data file will be installed. Click **Browse**.



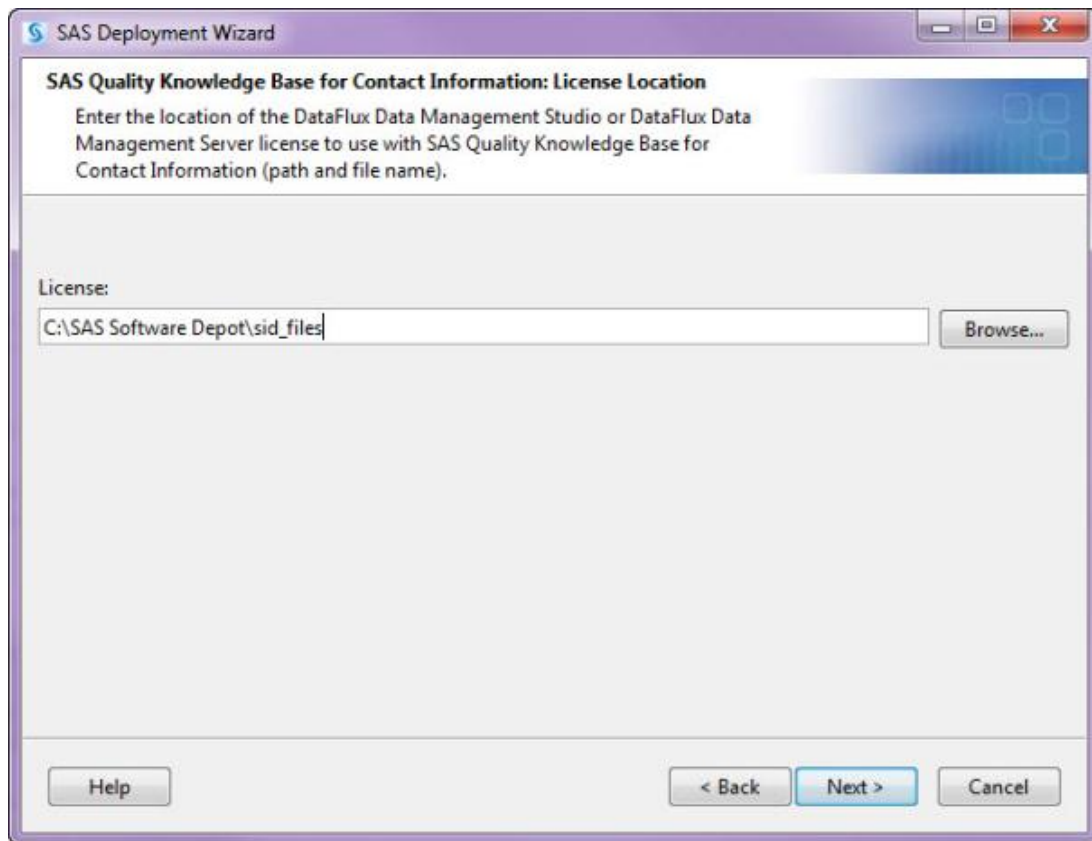
16. Click **Next**.
17. On the **Select Regional Settings** page, specify a regional setting for the language.



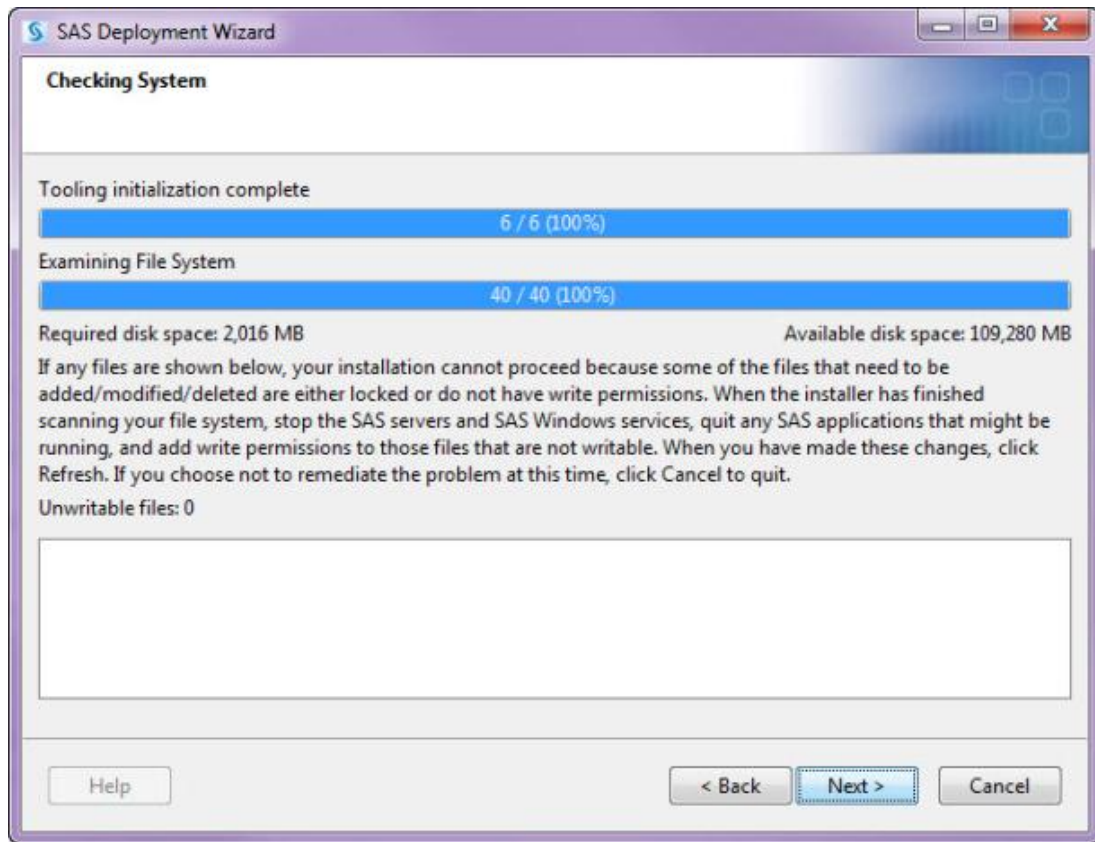
18. Click **Next**.
19. On the **SAS Quality Knowledge Base for Contact Information** page, specify the installation location for your data content.



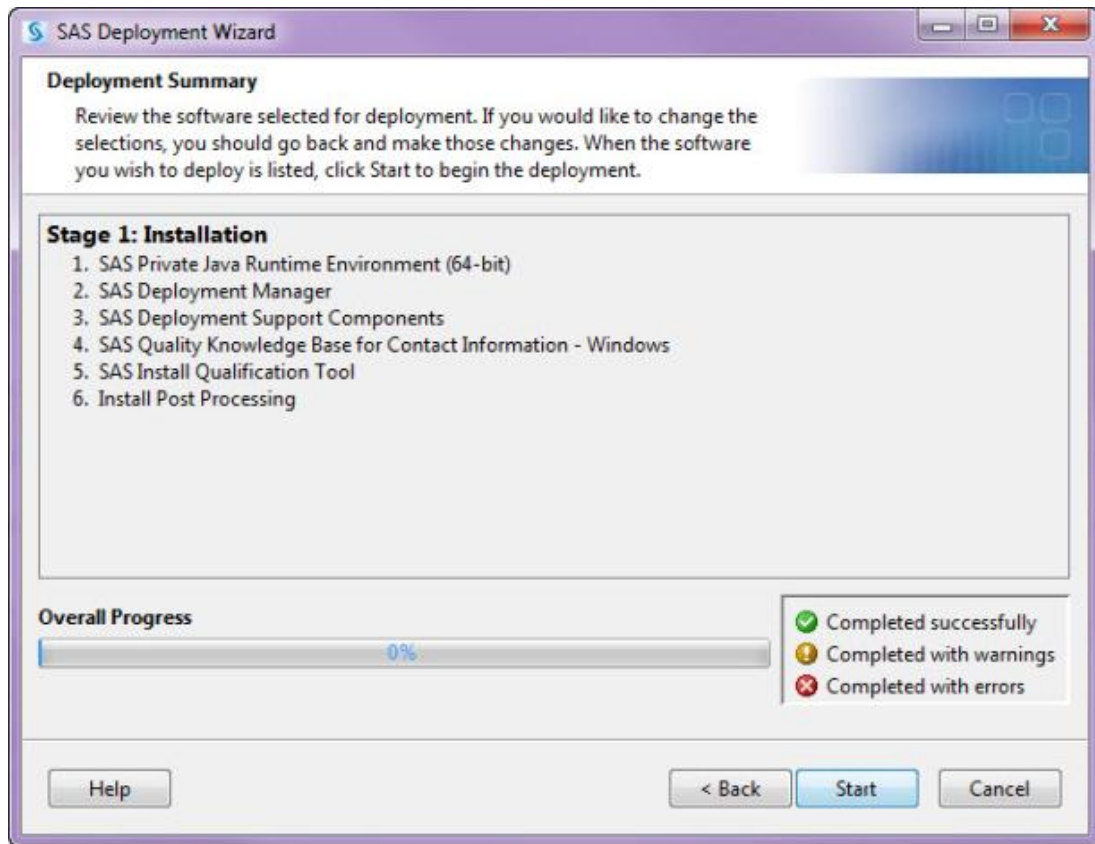
20. Click **Next**.
21. On the **SAS Quality Knowledge Base for Contact Information: License Location** page, specify the location where your DataFlux Data Management Studio or SAS Institute Inc. license is located. Click **Browse** if you want to navigate to a location.



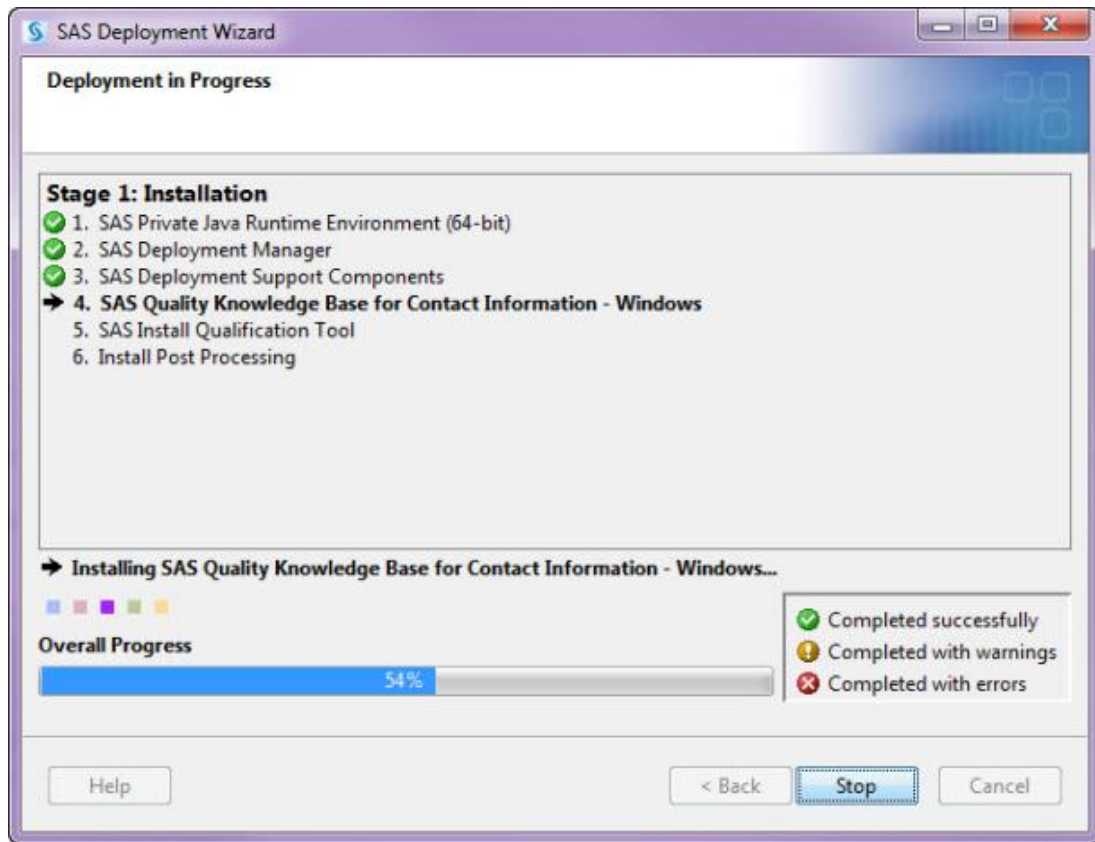
22. Click **Next**.
23. On the **Checking System** page, a tool reviews the software for files that might need to be added, modified, or deleted.



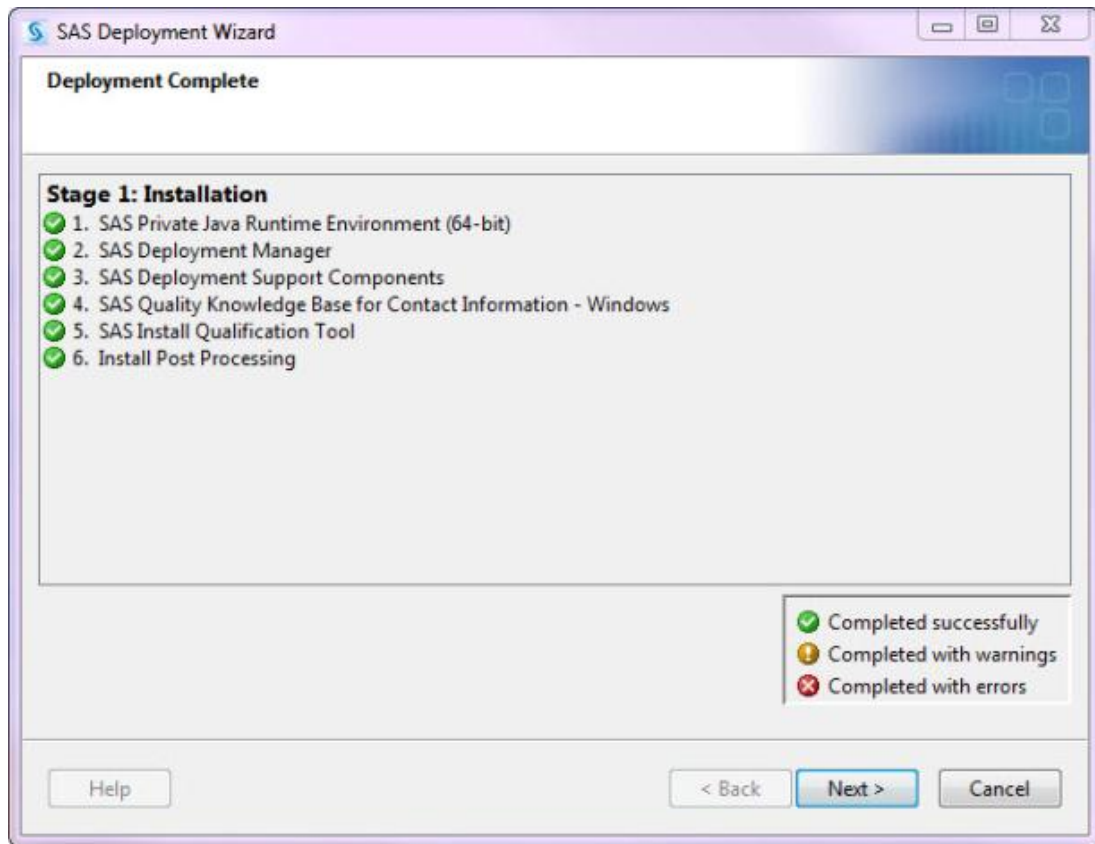
24. Click **Next**.
25. On the **Deployment Summary** page, the software that is included in your SAS software installation is listed.



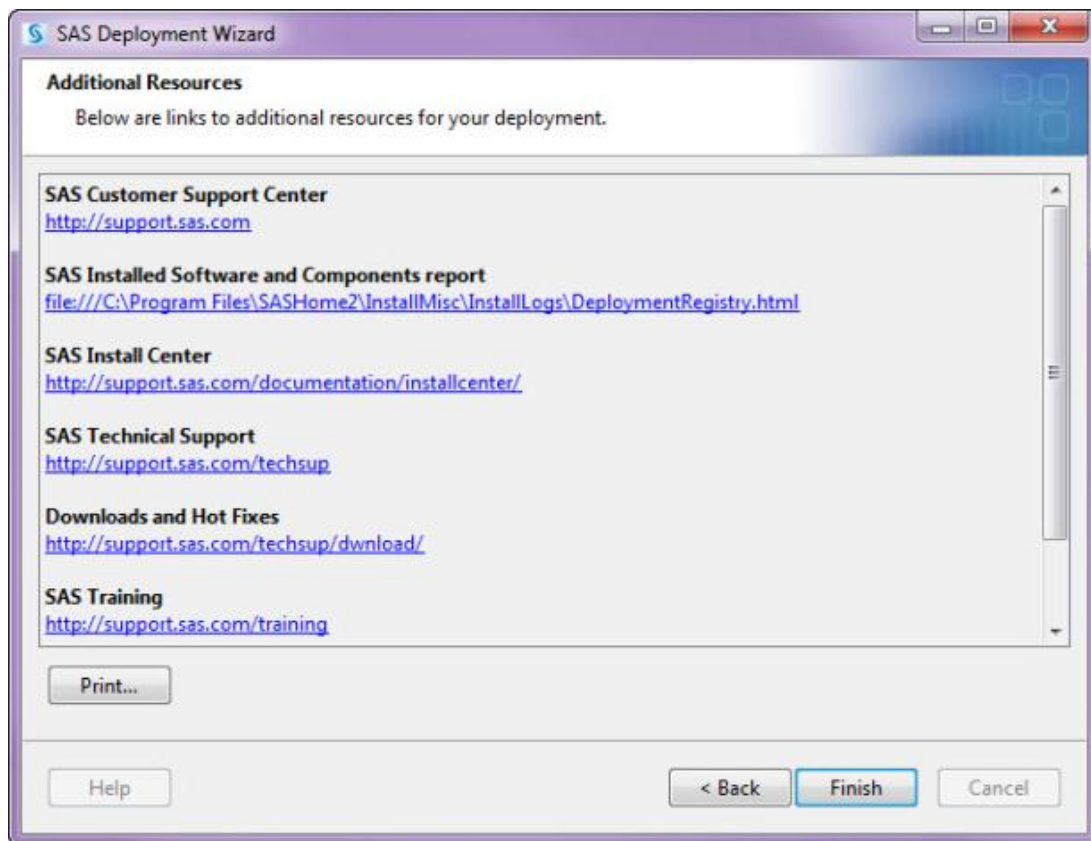
26. Click **Start**.
27. On the **Deployment in Progress** page, the overall progress of your SAS software installation is displayed.



28. On the **Deployment Complete** page, the green check mark next to each item on the installation list indicates that the software was installed successfully.



29. Click **Next**.
30. On the **Additional Resources** page, a variety of locations that you can go to for additional information about your SAS software installation is provided.



31. Click **Finish**.

Downloading and Installing Using Downloads Site

Just like past downloads and installations, you can also continue to download and install the SAS QKB CI using the Windows or UNIX instructions provided in this document. Refer to these sections for detailed instructions.

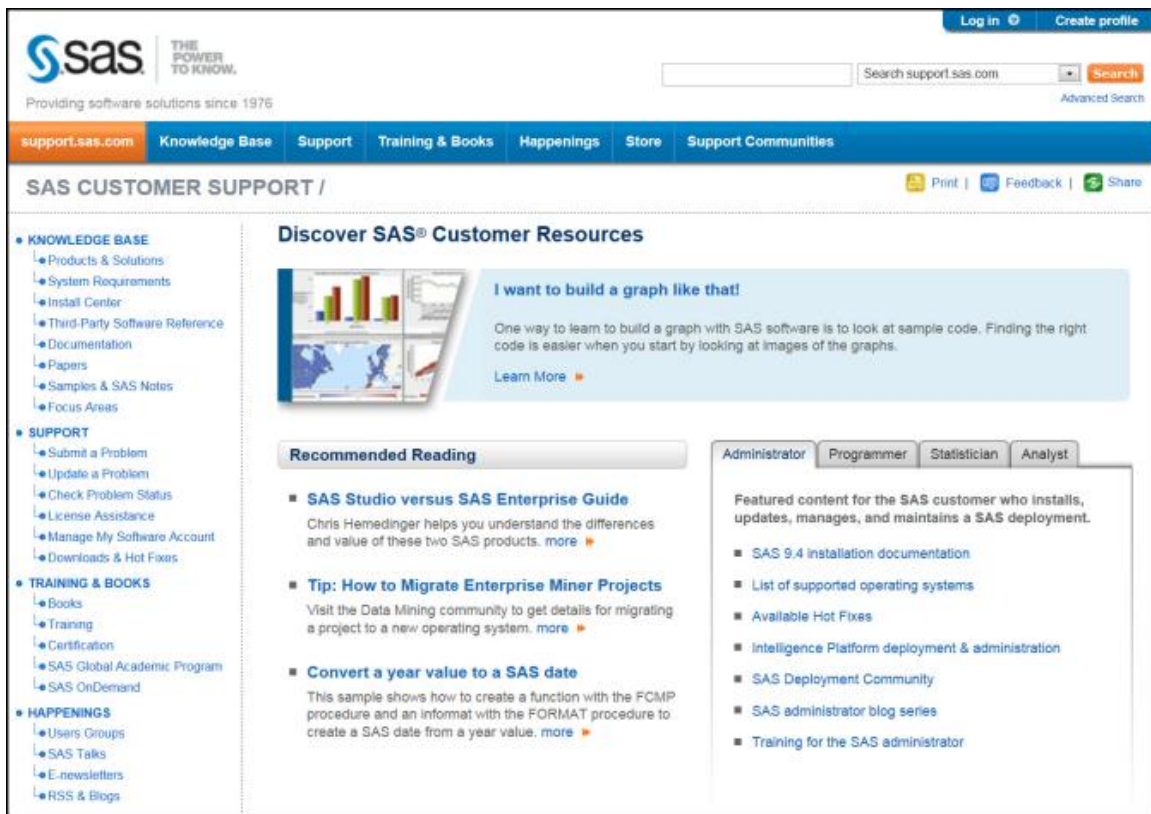
- [Downloading a Quality Knowledge Base](#)
- [Installing a Quality Knowledge Base](#)

Downloading a Quality Knowledge Base

- [Downloading a QKB for Windows](#)
- [Downloading a QKB for UNIX](#)

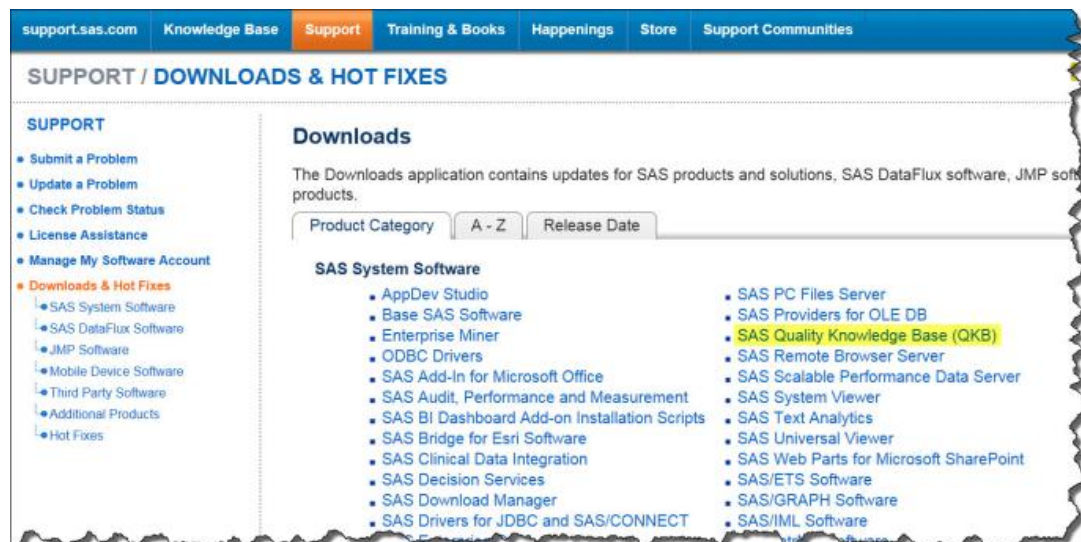
Downloading a QKB for Windows

To download the SAS Quality Knowledge Base (QKB) for Contact Information (CI) 24, go to the SAS Customer Support website located at <http://support.sas.com>.



SAS Customer Support Web Site

1. In the menu bar, click **Support**.
2. In the left pane, click **Downloads & Hot Fixes**.

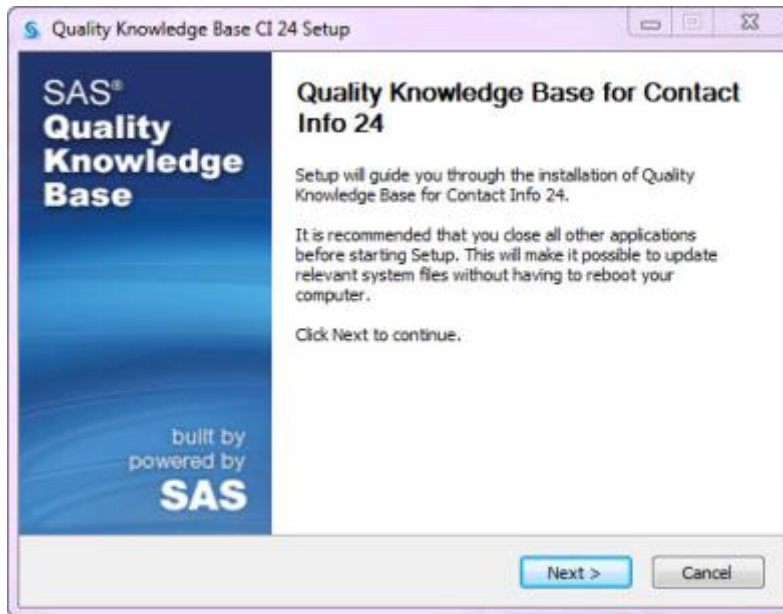


3. From the **SAS System Software** section, select **SAS Quality Knowledge Base (QKB)**.

4. Select **SAS Quality Knowledge Base for Contact Information 24**.

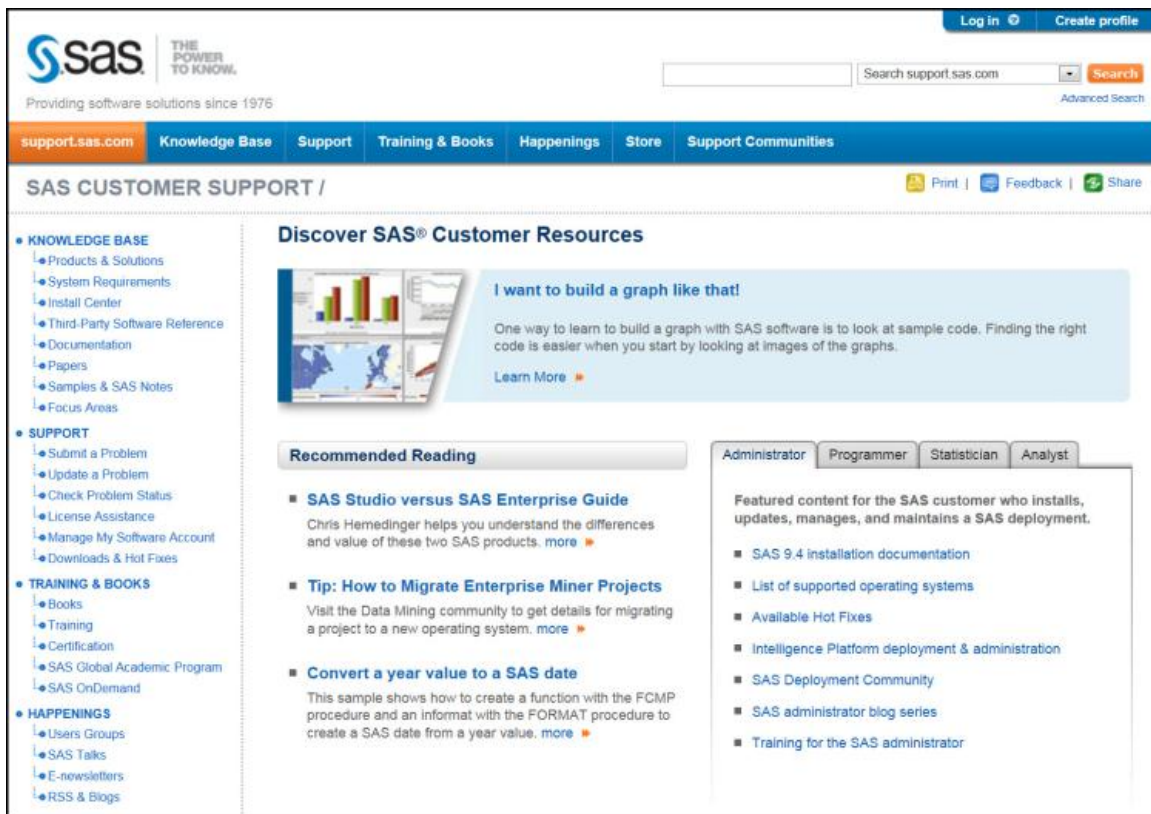


5. A list of platform options is available on the SAS Quality Knowledge Base for Contact Information 24 Downloads page. Select **Windows 32-bit** or **Windows 64-bit**.
6. A login prompt opens. Enter your e-mail address and password to log in.
7. Read the SAS License Agreement. Click **Accept** or **Do Not Accept**.
8. A message appears, asking **Do you want to run or save qkb-ci-v24-win64.exe (or -win32.exe) from support.sas.com?** Click **Run** or **Save**.
9. Follow the steps in the SAS Quality Knowledge Base for Contact Information 24 wizard.

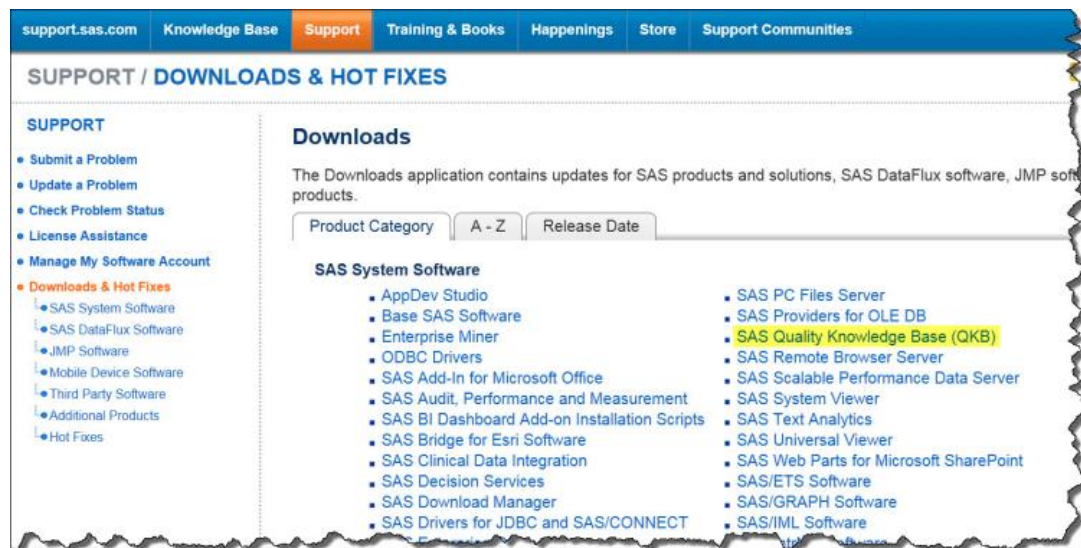


Downloading a QKB for UNIX

To download the SAS QKB CI 24, go to the SAS Customer Support website located at <http://support.sas.com>.



1. In the menu bar, click **Support**.
2. In the left pane, click **Downloads & Hot Fixes**.



3. From the **SAS System Software** section, select **SAS Quality Knowledge Base (QKB)**.
4. Select **SAS Quality Knowledge Base for Contact Information 24**.



5. A list of platform options is available on the SAS Quality Knowledge Base for Contact Information 24 Downloads page. Select the appropriate download file for your UNIX platform.
6. A login prompt opens. Enter your e-mail address and password to log in.
7. Read the SAS License Agreement. Click **Accept** or **Do Not Accept**.
8. Select the TAR file using the following command:

```
gzip -c -d <path_to>/qkb-ci-v24-<platform>.tar.gz | tar xvf -
```

Replace *<path_to>* with the directory where the TAR file will be located and *<platform>* with the platform name (linux, sol64, and so on).

9. For additional information, refer to [Installing on UNIX](#).

Installing the Quality Knowledge Base

- [Installing on Windows](#)
- [Installing on UNIX](#)

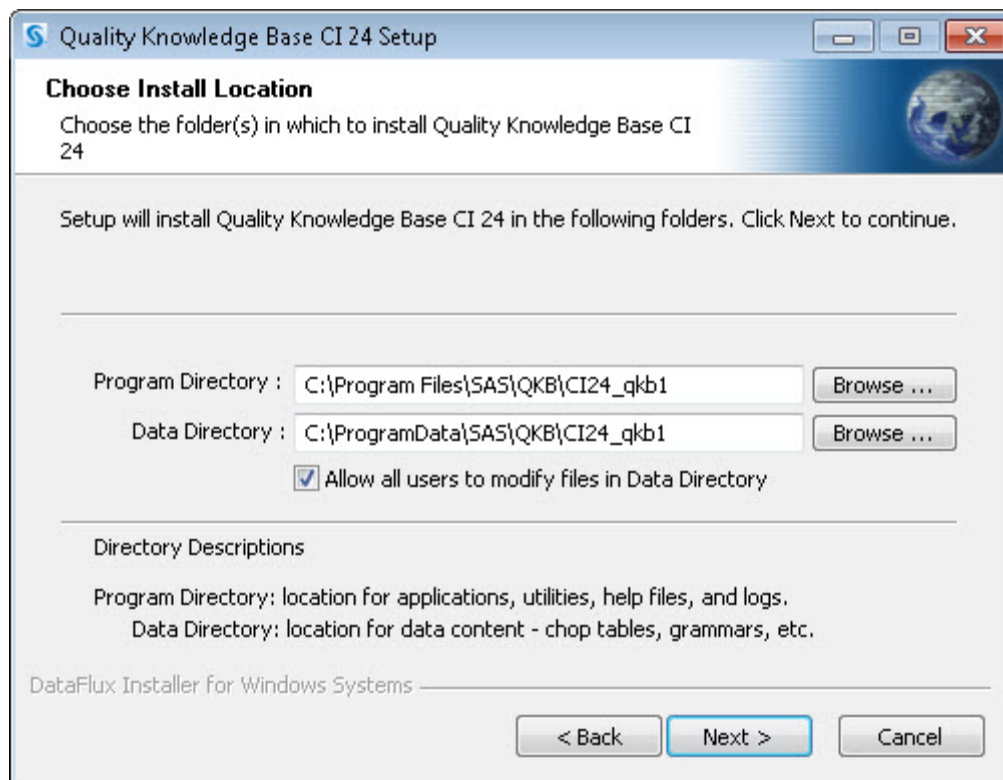
Installing on Windows

This section takes you through the typical installation process for SAS Quality Knowledge Base (QKB) for Contact Information (CI) 24 for Microsoft Windows operating systems.

- [Installation Instructions](#)
- [Locales](#)
- [Registration](#)
- [Command Line Installation Options](#)
- [Windows Directory Layout](#)

Installation Instructions

To launch the SAS QKB CI setup program on Windows, double-click on the setup application file. During the installation, you are prompted for information. Follow the instructions in the installation dialog box, or see [below](#) for more information:



Choose Install Location

Program Directory

This directory is typically located under your SASHome directory, which is normally in the Program Files directory. The Program Directory contains program files, applications, utilities, help files, and logs. With the exception of the logs, content installed in this directory typically remains unchanged after installation.

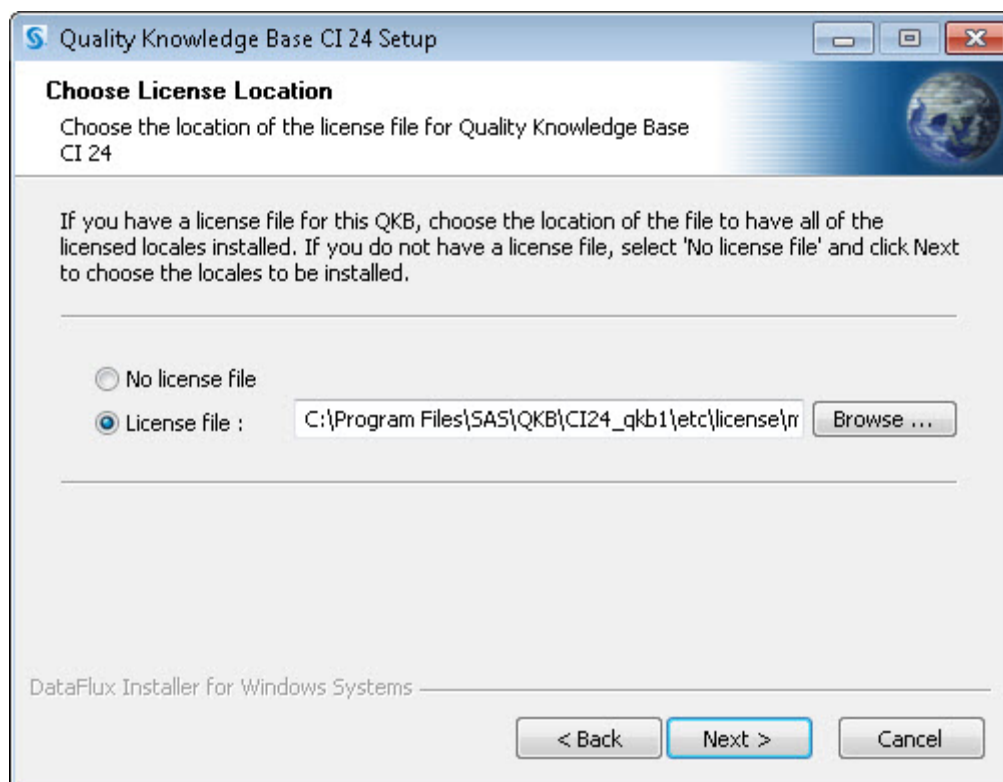
Data Directory

This directory is typically located under the ProgramData directory. Contents in this directory can be modified by customizing your SAS QKB CI. If you are reinstalling the SAS QKB CI, you must select a directory that is different from the directory containing your original SAS QKB CI data.

Allow all users to modify files in Data Directory

Some Windows environments restrict who can access directories. If you select this option, it enables all authenticated users full access rights to the Data Directory. If you do not select this option, there are no changes to the security settings of the Data Directory. An administrator will need to provide users or groups explicit access by using Windows security.

The options in the Choose License Location dialog box include **No license file** and **License file** path.



Choose License Location

No license file

Select the **No license file** option to choose from a complete list of available QKB locales that you can install.



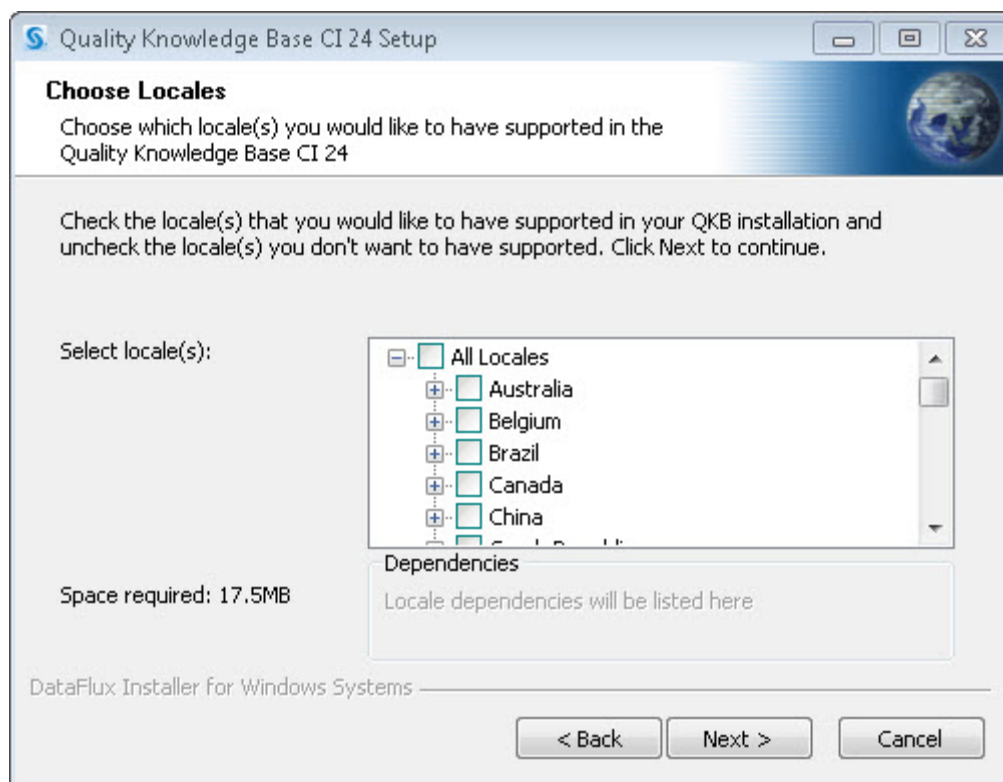
Note: You must have a license to use any of the available QKB locales.

License file

Select the **License file** option if you have your license file and you want to install all licensed locales. Click **Browse** to locate the path and file name of your license file. This file is used to determine which QKB locales are installed.

Choose Locales

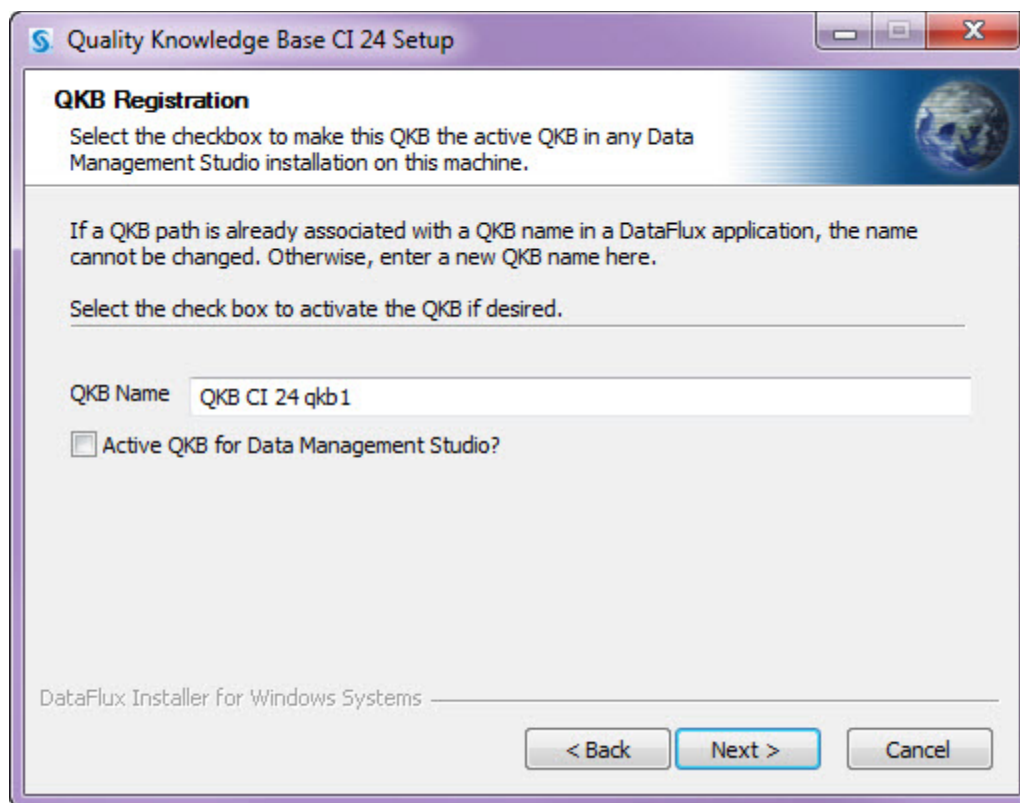
If you selected the **No license file** option, the following dialog box appears with a complete list of available QKB locales. Select one or more locales from the **Select locale(s)** list.



Choose Locales

QKB Registration

The QKB Registration dialog box appears after you have selected your QKB locales or specified the license file.



QKB Registration

The **QKB Name** is used to identify the QKB in data management applications. The QKB name must be unique in the system. This means that you cannot use the same name that was used in an earlier QKB installation.

Active QKB for Data Management Studio?

If you want to set the QKB as the active QKB for DataFlux Data Management Studio, select this option.



Note: When you select this option, your previous QKB becomes inactive. Consider this option carefully, and leave the check box unchecked if you want to continue to use a previously active QKB. You can activate the new QKB later within DataFlux Data Management Studio.

Command Line Installation Option

To install the SAS QKB CI on Windows without user intervention, invoke the setup application from the Windows command line using the following parameters:

Parameter	Description
/ACTIVE	If present and set to TRUE, the installed SAS QKB CI is set to active for DataFlux Data Management Studio.
/DATADIR	The path for the Data Directory that contains SAS QKB CI data and logic files.

Parameter	Description	
/INSTDIR	The path for the Program Directory that contains installation files and documentation.	
/LOCALES	Comma-separated list of ISO code names for the locales to be installed. Locale ISO code names are listed below:	
	Locale Name	ISO Code Name
	Afrikaans, South Africa	AFZAF
	Arabic, Egypt	AREGY
	Chinese, China	ZHCHN
	Czech, Czech Republic	CSCZE
	Danish, Denmark	DADNK
	Dutch, Belgium	NLBEL
	Dutch, Netherlands	NLNLD
	English, Australia	EN AUS
	English, Canada	EN CAN
	English, Hong Kong	EN HKG
	English, India	EN IND
	English, New Zealand	EN NZL
	English, South Africa	EN ZAF
	English, United Kingdom	EN GBR
	English, United States	EN USA
	Finnish, Finland	FIFIN
	French, Belgium	FRBEL
	French, Canada	FR CAN
	French, France	FR FRA
	German, Germany	DE DEU
	Greek, Greece	ELGRC
	Hebrew, Israel	HEISR
	Hungarian, Hungary	HUHUN
	Italian, Italy	ITITA
	Japanese, Japan	JA JPN
	Korean, South Korea	KOKOR
	Malay, Malaysia	MSMYS
	Norwegian, Norway	NONOR
	Polish, Poland	PLPOL
	Portuguese, Brazil	PTBRA
	Portuguese, Portugal	PTPRT
	Russian, Russia	RURUS
	Slovak, Slovakia	SKSVK
	Spanish, Mexico	ESMEX
	Spanish, Spain	ESESP
	Swedish, Sweden	SVSWE
	Thai, Thailand	THTHA

Parameter	Description
	Turkish, Turkey TRTUR
/QKB_NAME	The name assigned to the SAS QKB CI.
/S	Case-sensitive capital "S" tells the installer to perform a silent install.

Below is an example of the command line with parameters for installing the English, United States and French, France locales:

```
qkb-ci-v24-win64.exe /S /QKB_NAME="SAS QKB CI 24"
/INSTDIR="C:\Program Files\SAS\QKB\CI\24"
/DATADIR="C:\ProgramData\SAS\QKB\CI\24"
/ACTIVE="true" /LOCALES="ENUSA,FRFRA"
```



Note: For 32-bit Windows installations, the name of the setup application is **qkb-ci-v24-win32.exe**. For 64-bit Windows installations, the name of the setup application is **qkb-ci-v24-win64.exe**.

Windows Directory Layout

- [Program Directory](#)
- [Data Directory](#)

Program Directory

After your installation is complete, you will have the following subdirectories in your program directory:

Directory	Description
bin	Executable files for this platform
data	Data specific to this installation
doc	Detailed SAS QKB CI documentation in HTML format
lib	Library files for this platform
share	Shared (not platform-specific) data

Data Directory

You will have the following subdirectories in your data directory:

Directory	Description
chopinfo	Chop table files used in SAS QKB CI definitions
grammar	Grammar files used in SAS QKB CI definitions
locale	Metadata about SAS QKB CI data types and definitions
phonetx	Phonetics libraries used in SAS QKB CI definitions
regexlib	Regular Expression libraries used in SAS QKB CI definitions
scheme	Scheme files used in SAS QKB CI definitions or applied directly to data in a data job
vocab	Vocabulary files used in SAS QKB CI definitions

Installing on UNIX

This section takes you through the typical installation process for SAS QKB CI 24 for UNIX operating systems.

- [Installation Instructions](#)
- [License Instructions](#)
- [Reinstall or Upgrade Your QKB](#)
- [UNIX Directory Layout](#)

Installation Instructions

Enter the following command at your UNIX command prompt:

```
cd /opt/sas
```

If you want to install your SAS software in a directory other than /opt/sas, enter that location instead of /opt/sas. Note that all files are installed in a subdirectory called qkb. Enter the following command:

```
gzip -c -d <path_to>/qkb-ci-v24-<platform>.tar.gz | tar xvf -
```

Replace <path_to> with the directory where you have copied the TAR file. Replace <platform> with the platform name (linux, sol64, and so on). Enter the following command:

```
perl qkb/install.pl
```

The install script takes control of the installation process. You are prompted for information about where to install the QKB data files and which locales will be installed.

License Instructions

During the installation, you are prompted about the QKB license file. You should have a license file for the QKB.

If you have a license file for this QKB, only the locales that you have licensed are installed. If you do not have a license file, you must choose the locales to be installed individually.

Do you have a license file? (y/n) [n]:

If you answer yes, you are prompted for the location (path and file name) of the license file. This license file is used to determine which QKB locales will be installed.

If you answer no, you are shown a list of QKB locales from which to choose to be installed.



Note: You must have a license to use any of the available QKB locales.

Reinstall or Upgrade Your QKB

During a reinstall or upgrade, you might encounter the following prompts. Answer each prompt as appropriate for your site.

You have chosen a location that already contains an instance of Quality Knowledge Base CI - 24.

Reinstall the software in this location? (y/n) [n]:

This prompt explains that this QKB has already been installed in the installation location that you selected. If you answer yes, a confirmation prompt follows.

If you answer no, the installation stops. You will need to rerun the install script and select a different installation location.

You have chosen a location that already has another SAS product installed.
Product: Quality Knowledge Base - CI - 23.

Please choose another location for this installation.

This prompt explains that an earlier version of the QKB has already been installed in the installation location that you selected. The installation stops. You will need to rerun the install script and select a different installation location.

Do you want to replace the data in the existing Data Directory? The existing data will be copied to a backup directory. If you choose not to replace the existing data, you can choose a new location for the data.

Replace existing data? (y/n) [y]:

This prompt asks you to confirm that you want to back up and replace the existing data in either a reinstallation or upgrade. If you answer yes, the Data Directory will be backed up. If you answer no, the installation stops. You will need to rerun the install script and select a different installation location.

UNIX Directory Layout

After your installation is complete, you will have the following subdirectories in your installation directory:

Directory	Description
qkb/bin	Executable files for this platform. The QKB Merge Tool and script are installed here.
qkb/data	Data specific to this installation.
qkb/doc	Detailed SAS QKB CI documentation in HTML format.

Directory	Description
qkb/lib	Library files for this platform.
qkb/share	Shared (not platform-specific) data.
qkb/install.pl	The installer (see the installation instructions).
qkb/ReleaseNotes	Release notes for this platform.
qkb/README	A text file containing brief information about getting started.

Merging with an Existing QKB

If you made customizations in a previously installed QKB, you might want to merge your newly installed QKB with the previously installed QKB so that you can save your customizations. See the SAS QKB CI 24 online Help for information about how to merge your existing QKB with the latest QKB.

Configuring Data Jobs

The following definitions are released with non-default values for the Parse Resource Limit or Solution Tree Depth optimization parameter. SAS recommends that you do not override these parameters when using these definitions in your data jobs.

Afrikaans, South Africa

Definition	Type	Parse Resource Limit	Solution Tree Depth
E-mail	Match	MEDIUM	
E-mail	Parse	MEDIUM	
E-mail	Standardization	MEDIUM	
E-mail (v23)	Match	MEDIUM	
Name (Multiple Name)	Parse	HIGH	5

Arabic, Egypt

Definition	Type	Parse Resource Limit	Solution Tree Depth
E-mail	Match	MEDIUM	
E-mail	Parse	MEDIUM	
E-mail	Standardization	MEDIUM	
E-mail (v23)	Match	MEDIUM	

Chinese, China

Definition	Type	Parse Resource Limit	Solution Tree Depth
E-mail	Match	MEDIUM	
E-mail	Parse	MEDIUM	
E-mail	Standardization	MEDIUM	
E-mail (v23)	Match	MEDIUM	

Czech, Czech Republic

Definition	Type	Parse Resource Limit	Solution Tree Depth
Address	Match	HIGH	
Address	Parse	HIGH	
Address	Standardization	HIGH	
Address (Global)	Parse	HIGH	
Address (Global) (v23)	Parse	HIGH	
Address (PO Box Only)	Match	HIGH	
Address (Street Only)	Match	HIGH	

Definition	Type	Parse Resource Limit	Solution Tree Depth
E-mail	Match	MEDIUM	
E-mail	Parse	MEDIUM	
E-mail	Standardization	MEDIUM	
E-mail (v23)	Match	MEDIUM	
Phone	Match	HIGH	5
Phone	Parse	HIGH	5
Phone	Standardization	HIGH	5
Phone (Electronic)	Standardization	HIGH	5
Phone (with Country Code)	Standardization	HIGH	5

Danish, Denmark

Definition	Type	Parse Resource Limit	Solution Tree Depth
E-mail	Match	MEDIUM	
E-mail	Parse	MEDIUM	
E-mail	Standardization	MEDIUM	
E-mail (v23)	Match	MEDIUM	

Dutch, Belgium

Definition	Type	Parse Resource Limit	Solution Tree Depth
E-mail	Match	MEDIUM	
E-mail	Parse	MEDIUM	
E-mail	Standardization	MEDIUM	
E-mail (v23)	Match	MEDIUM	
Name (Multiple Name)	Parse	INTENSIVE	

Dutch, Netherlands

Definition	Type	Parse Resource Limit	Solution Tree Depth
Address	Match	HIGH	
Address	Parse	HIGH	
Address	Standardization	HIGH	
Address (Full)	Parse	HIGH	
Address (Global)	Parse	HIGH	
Address (Global) (v23)	Parse	HIGH	
Address (PO Box Only)	Match	HIGH	
Address (Short Street Name)	Standardization	HIGH	

Definition	Type	Parse Resource Limit	Solution Tree Depth
Address (Street Only)	Match	HIGH	
City	Match	VERY HIGH	
City	Standardization	VERY HIGH	
City - State/Province - Postal Code	Match	VERY HIGH	
City - State/Province - Postal Code	Parse	VERY HIGH	
City - State/Province - Postal Code	Standardization	VERY HIGH	
City - State/Province - Postal Code (Global)	Parse	VERY HIGH	
City - State/Province - Postal Code (International)	Standardization	VERY HIGH	
E-mail	Match	MEDIUM	
E-mail	Parse	MEDIUM	
E-mail	Standardization	MEDIUM	
E-mail (v23)	Match	MEDIUM	
Name (Multiple Name)	Parse	INTENSIVE	

English, Australia

Definition	Type	Parse Resource Limit	Solution Tree Depth
E-mail	Match	MEDIUM	
E-mail	Parse	MEDIUM	
E-mail	Standardization	MEDIUM	
E-mail (v23)	Match	MEDIUM	
Name (Multiple Name)	Parse	HIGH	5
Phone	Match	HIGH	5
Phone	Parse	HIGH	5
Phone	Standardization	HIGH	5
Phone (Electronic)	Standardization	HIGH	5
Phone (with Country Code)	Standardization	HIGH	5

English, Canada

Definition	Type	Parse Resource Limit	Solution Tree Depth
E-mail	Match	MEDIUM	
E-mail	Parse	MEDIUM	
E-mail	Standardization	MEDIUM	
E-mail (v23)	Match	MEDIUM	

Definition	Type	Parse Resource Limit	Solution Tree Depth
Name (Multiple Name)	Parse	HIGH	5

English, Hong Kong

Definition	Type	Parse Resource Limit	Solution Tree Depth
E-mail	Match	MEDIUM	
E-mail	Parse	MEDIUM	
E-mail	Standardization	MEDIUM	
E-mail (v23)	Match	MEDIUM	
Name (Multiple Name)	Parse	HIGH	5

English, India

Definition	Type	Parse Resource Limit	Solution Tree Depth
Address	Match	INTENSIVE	
Address	Parse	INTENSIVE	
Address	Standardization	INTENSIVE	
Address (Full)	Parse	INTENSIVE	5
Address (Global)	Parse	INTENSIVE	
Address (Global) (v23)	Parse	INTENSIVE	
E-mail	Match	MEDIUM	
E-mail	Parse	MEDIUM	
E-mail	Standardization	MEDIUM	
E-mail (v23)	Match	MEDIUM	
Name (Multiple Name)	Parse	HIGH	5

English, New Zealand

Definition	Type	Parse Resource Limit	Solution Tree Depth
E-mail	Match	MEDIUM	
E-mail	Parse	MEDIUM	
E-mail	Standardization	MEDIUM	
E-mail (v23)	Match	MEDIUM	
Name (Multiple Name)	Parse	HIGH	5

English, South Africa

Definition	Type	Parse Resource Limit	Solution Tree Depth
Address (Full)	Parse	HIGH	5
E-mail	Match	MEDIUM	
E-mail	Parse	MEDIUM	
E-mail	Standardization	MEDIUM	
E-mail (v23)	Match	MEDIUM	
Name (Multiple Name)	Parse	HIGH	5

English, United Kingdom

Definition	Type	Parse Resource Limit	Solution Tree Depth
Address	Match	MEDIUM	
Address	Parse	MEDIUM	
Address	Standardization	MEDIUM	
Address (Full)	Match	VERY HIGH	
Address (Full)	Parse	HIGH	
Address (Full) (with Combinations)	Match	VERY HIGH	
Address (Global)	Parse	MEDIUM	
Address (Global) (v23)	Parse	MEDIUM	
E-mail	Match	MEDIUM	
E-mail	Parse	MEDIUM	
E-mail	Standardization	MEDIUM	
E-mail (v23)	Match	MEDIUM	
Name (Multiple Name)	Parse	HIGH	5
Phone	Match	HIGH	
Phone	Parse	HIGH	
Phone	Standardization	HIGH	
Phone (Electronic)	Standardization	HIGH	
Phone (with Country Code)	Standardization	HIGH	

English, United States

Definition	Type	Parse Resource Limit	Solution Tree Depth
E-mail	Match	MEDIUM	
E-mail	Parse	MEDIUM	
E-mail	Standardization	MEDIUM	
E-mail (v23)	Match	MEDIUM	

Definition	Type	Parse Resource Limit	Solution Tree Depth
Name (Multiple Name)	Parse	HIGH	5
Phone	Match	HIGH	
Phone	Parse	HIGH	
Phone	Standardization	HIGH	
Phone (Electronic)	Standardization	HIGH	
Phone (with Country Code)	Standardization	HIGH	

Finnish, Finland

Definition	Type	Parse Resource Limit	Solution Tree Depth
E-mail	Match	MEDIUM	
E-mail	Parse	MEDIUM	
E-mail	Standardization	MEDIUM	
E-mail (v23)	Match	MEDIUM	
Name (Multiple Name)	Parse	HIGH	5

French, Belgium

Definition	Type	Parse Resource Limit	Solution Tree Depth
E-mail	Match	MEDIUM	
E-mail	Parse	MEDIUM	
E-mail	Standardization	MEDIUM	
E-mail (v23)	Match	MEDIUM	
Name (Multiple Name)	Parse	INTENSIVE	

French, Canada

Definition	Type	Parse Resource Limit	Solution Tree Depth
E-mail	Match	MEDIUM	
E-mail	Parse	MEDIUM	
E-mail	Standardization	MEDIUM	
E-mail (v23)	Match	MEDIUM	
Name (Multiple Name)	Parse	HIGH	5

French, France

Definition	Type	Parse Resource Limit	Solution Tree Depth
Address	Match	VERY HIGH	
Address	Parse	VERY HIGH	
Address	Standardization	VERY HIGH	
Address (Detailed)	Parse	VERY HIGH	
Address (Full)	Parse	VERY HIGH	
Address (Full) (AFNOR)	Parse	VERY HIGH	
Address (Global)	Parse	VERY HIGH	
Address (Global) (v23)	Parse	VERY HIGH	
Address (PO Box Only)	Match	VERY HIGH	
Address (Street Only)	Match	VERY HIGH	
E-mail	Match	MEDIUM	
E-mail	Parse	MEDIUM	
E-mail	Standardization	MEDIUM	
E-mail (v23)	Match	MEDIUM	
Name (Multiple Name)	Parse	MEDIUM	
Name/Organization	Parse	MEDIUM	
Organization	Match	VERY HIGH	
Organization	Parse	VERY HIGH	
Organization	Standardization	VERY HIGH	
Organization (Global)	Parse	VERY HIGH	
Organization (Upper)	Standardization	VERY HIGH	

German, Germany

Definition	Type	Parse Resource Limit	Solution Tree Depth
E-mail	Match	MEDIUM	
E-mail	Parse	MEDIUM	
E-mail	Standardization	MEDIUM	
E-mail (v23)	Match	MEDIUM	
Phone	Match	MEDIUM	
Phone	Parse	MEDIUM	
Phone	Standardization	MEDIUM	
Phone (Electronic)	Standardization	MEDIUM	
Phone (Global)	Parse	MEDIUM	
Phone (with Country Code)	Standardization	MEDIUM	

Greek, Greece

Definition	Type	Parse Resource Limit	Solution Tree Depth
E-mail	Match	MEDIUM	
E-mail	Parse	MEDIUM	
E-mail	Standardization	MEDIUM	
E-mail (v23)	Match	MEDIUM	

Hebrew, Israel

Definition	Type	Parse Resource Limit	Solution Tree Depth
E-mail	Match	MEDIUM	
E-mail	Parse	MEDIUM	
E-mail	Standardization	MEDIUM	
E-mail (v23)	Match	MEDIUM	

Hungarian, Hungary

Definition	Type	Parse Resource Limit	Solution Tree Depth
E-mail	Match	MEDIUM	
E-mail	Parse	MEDIUM	
E-mail	Standardization	MEDIUM	
E-mail (v23)	Match	MEDIUM	

Italian, Italy

Definition	Type	Parse Resource Limit	Solution Tree Depth
Address	Match	HIGH	
Address	Parse	HIGH	
Address	Standardization	HIGH	
Address (Full)	Parse	VERY HIGH	
Address (Global)	Parse	HIGH	
Address (Global) (v23)	Parse	HIGH	
Address (PO Box Only)	Match	HIGH	
Address (Postal Standard)	Standardization	HIGH	
Address (Street Only)	Match	HIGH	
City	Match	HIGH	
City	Standardization	HIGH	
City - State/Province - Postal Code	Match	HIGH	
City - State/Province - Postal Code	Parse	HIGH	
City - State/Province - Postal	Standardization	HIGH	

Definition	Type	Parse Resource Limit	Solution Tree Depth
Code			
City - State/Province - Postal Code (Global)	Parse	HIGH	
City - State/Province - Postal Code (International)	Standardization	HIGH	
City (Postal Standard)	Standardization	HIGH	
E-mail	Match	MEDIUM	
E-mail	Parse	MEDIUM	
E-mail	Standardization	MEDIUM	
E-mail (v23)	Match	MEDIUM	
Name (Multiple Name)	Parse	MEDIUM	
Organization	Match	HIGH	
Organization	Parse	HIGH	
Organization	Standardization	HIGH	
Organization (Global)	Parse	HIGH	

Japanese, Japan

Definition	Type	Parse Resource Limit	Solution Tree Depth
Address	Match	VERY HIGH	5
Address	Parse	VERY HIGH	5
Address	Standardization	VERY HIGH	5
Address (Full)	Match	VERY HIGH	
Address (Full)	Parse	VERY HIGH	
Address (Full)	Standardization	VERY HIGH	
Address (PO Box Only)	Match	VERY HIGH	5
Address (Street Only)	Match	VERY HIGH	5
E-mail	Match	MEDIUM	
E-mail	Parse	MEDIUM	
E-mail	Standardization	MEDIUM	
E-mail (v23)	Match	MEDIUM	
Name	Gender	HIGH	
Name	Match	HIGH	
Name	Parse	HIGH	
Name	Standardization	HIGH	
Name (Global)	Parse	HIGH	
Phone	Match	HIGH	5
Phone	Parse	HIGH	5
Phone	Standardization	HIGH	5
Phone (Electronic)	Standardization	HIGH	5

Definition	Type	Parse Resource Limit	Solution Tree Depth
Phone (with Country Code)	Standardization	HIGH	5

Korean, South Korea

Definition	Type	Parse Resource Limit	Solution Tree Depth
E-mail	Match	MEDIUM	
E-mail	Parse	MEDIUM	
E-mail	Standardization	MEDIUM	
E-mail (v23)	Match	MEDIUM	

Malay, Malaysia

Definition	Type	Parse Resource Limit	Solution Tree Depth
E-mail	Match	MEDIUM	
E-mail	Parse	MEDIUM	
E-mail	Standardization	MEDIUM	
E-mail (v23)	Match	MEDIUM	

Norwegian, Norway

Definition	Type	Parse Resource Limit	Solution Tree Depth
E-mail	Match	MEDIUM	
E-mail	Parse	MEDIUM	
E-mail	Standardization	MEDIUM	
E-mail (v23)	Match	MEDIUM	

Polish, Poland

Definition	Type	Parse Resource Limit	Solution Tree Depth
E-mail	Match	MEDIUM	
E-mail	Parse	MEDIUM	
E-mail	Standardization	MEDIUM	
E-mail (v23)	Match	MEDIUM	

Portuguese, Brazil

Definition	Type	Parse Resource Limit	Solution Tree Depth
Address	Match	MEDIUM	
Address	Parse	MEDIUM	
Address	Standardization	MEDIUM	

Definition	Type	Parse Resource Limit	Solution Tree Depth
Address (Abbreviated Street Type and Title)	Standardization	MEDIUM	
Address (Detailed)	Parse	MEDIUM	
Address (Full)	Match	HIGH	
Address (Full)	Parse	HIGH	
Address (Full) (Detailed)	Parse	HIGH	
Address (Global)	Parse	MEDIUM	
Address (Global) (v23)	Parse	MEDIUM	
Address (PO Box Only)	Match	MEDIUM	
Address (Street Only)	Match	MEDIUM	
Address (v23)	Match	MEDIUM	
Address (v23)	Parse	MEDIUM	
E-mail	Match	MEDIUM	
E-mail	Parse	MEDIUM	
E-mail	Standardization	MEDIUM	
E-mail (v23)	Match	MEDIUM	

Portuguese, Portugal

Definition	Type	Parse Resource Limit	Solution Tree Depth
E-mail	Match	MEDIUM	
E-mail	Parse	MEDIUM	
E-mail	Standardization	MEDIUM	
E-mail (v23)	Match	MEDIUM	

Russian, Russia

Definition	Type	Parse Resource Limit	Solution Tree Depth
E-mail	Match	MEDIUM	
E-mail	Parse	MEDIUM	
E-mail	Standardization	MEDIUM	
E-mail (v23)	Match	MEDIUM	

Slovak, Slovakia

Definition	Type	Parse Resource Limit	Solution Tree Depth
Address	Match	MEDIUM	
Address	Parse	MEDIUM	
Address	Standardization	MEDIUM	
Address (Full)	Parse	MEDIUM	
Address (Global)	Parse	MEDIUM	

Definition	Type	Parse Resource Limit	Solution Tree Depth
Address (Global) (v23)	Parse	MEDIUM	
Address (PO Box Only)	Match	MEDIUM	
Address (Street Only)	Match	MEDIUM	
E-mail	Match	MEDIUM	
E-mail	Parse	MEDIUM	
E-mail	Standardization	MEDIUM	
E-mail (v23)	Match	MEDIUM	
Phone	Match	HIGH	5
Phone	Parse	HIGH	5
Phone	Standardization	HIGH	5
Phone (Electronic)	Standardization	HIGH	5
Phone (with Country Code)	Standardization	HIGH	5

Spanish, Mexico

Definition	Type	Parse Resource Limit	Solution Tree Depth
E-mail	Match	MEDIUM	
E-mail	Parse	MEDIUM	
E-mail	Standardization	MEDIUM	
E-mail (v23)	Match	MEDIUM	
Organization (Global)	Parse	HIGH	
Organization (v24)	Parse	HIGH	

Spanish, Spain

Definition	Type	Parse Resource Limit	Solution Tree Depth
Address	Match	MEDIUM	
Address	Parse	MEDIUM	
Address	Standardization	MEDIUM	
Address (Full)	Parse	VERY HIGH	
Address (Global)	Parse	HIGH	
Address (Global) (v23)	Parse	HIGH	
Address (PO Box Only)	Match	MEDIUM	
Address (Street Only)	Match	MEDIUM	
E-mail	Match	MEDIUM	
E-mail	Parse	MEDIUM	
E-mail	Standardization	MEDIUM	
E-mail (v23)	Match	MEDIUM	

Definition	Type	Parse Resource Limit	Solution Tree Depth
Name (Multiple Name)	Parse	VERY HIGH	5
Organization	Match	HIGH	
Organization	Parse	HIGH	
Organization	Standardization	HIGH	
Organization (Global)	Parse	HIGH	
Phone	Match	HIGH	5
Phone	Parse	HIGH	5
Phone	Standardization	HIGH	5
Phone (Electronic)	Standardization	HIGH	5
Phone (with Country Code)	Standardization	HIGH	5

Swedish, Sweden

Definition	Type	Parse Resource Limit	Solution Tree Depth
E-mail	Match	MEDIUM	
E-mail	Parse	MEDIUM	
E-mail	Standardization	MEDIUM	
E-mail (v23)	Match	MEDIUM	

Thai, Thailand

Definition	Type	Parse Resource Limit	Solution Tree Depth
E-mail	Match	MEDIUM	
E-mail	Parse	MEDIUM	
E-mail	Standardization	MEDIUM	
E-mail (v23)	Match	MEDIUM	

Turkish, Turkey

Definition	Type	Parse Resource Limit	Solution Tree Depth
Address	Parse	VERY HIGH	8
Address (Full)	Parse	VERY HIGH	8
Address (Full) (v23)	Parse	VERY HIGH	8
Address (Global)	Parse	VERY HIGH	8
Address (Global) (v23)	Parse	VERY HIGH	8
Address (v23)	Parse	VERY HIGH	8
E-mail	Match	MEDIUM	
E-mail	Parse	MEDIUM	
E-mail	Standardization	MEDIUM	

Definition	Type	Parse Resource Limit	Solution Tree Depth
E-mail (v23)	Match	MEDIUM	
Organization	Match	VERY HIGH	
Organization	Parse	VERY HIGH	
Organization	Standardization	VERY HIGH	
Organization (Global)	Parse	VERY HIGH	
Organization (v23)	Match	VERY HIGH	