

SAS[®] Quality Knowledge Base for Contact Information 22 Installation and Configuration

The correct bibliographic citation for this manual is as follows: SAS Institute Inc. 2014. *SAS® Quality Knowledge Base for Contact Information 22: Installation and Configuration*. Cary, NC: SAS Institute Inc.

SAS® Quality Knowledge Base for Contact Information 22: Installation and Configuration

Copyright © 2014, SAS Institute Inc., Cary, NC, USA

All rights reserved. Produced in the United States of America.

For a hard-copy book: No part of this publication may be reproduced, stored in a retrieval system, or transmitted, in any form or by any means, electronic, mechanical, photocopying, or otherwise, without the prior written permission of the publisher, SAS Institute Inc.

For a web download or e-book: Your use of this publication shall be governed by the terms established by the vendor at the time you acquire this publication.

The scanning, uploading, and distribution of this book via the Internet or any other means without the permission of the publisher is illegal and punishable by law. Please purchase only authorized electronic editions and do not participate in or encourage electronic piracy of copyrighted materials. Your support of others' rights is appreciated.

U.S. Government License Rights; Restricted Rights: The Software and its documentation is commercial computer software developed at private expense and is provided with RESTRICTED RIGHTS to the United States Government. Use, duplication or disclosure of the Software by the United States Government is subject to the license terms of this Agreement pursuant to, as applicable, FAR 12.212, DFAR 227.7202-1(a), DFAR 227.7202-3(a) and DFAR 227.7202-4 and, to the extent required under U.S. federal law, the minimum restricted rights as set out in FAR 52.227-19 (DEC 2007). If FAR 52.227-19 is applicable, this provision serves as notice under clause (c) thereof and no other notice is required to be affixed to the Software or documentation. The Government's rights in Software and documentation shall be only those set forth in this Agreement.

SAS Institute Inc., SAS Campus Drive, Cary, North Carolina 27513-2414.

January 2014

SAS provides a complete selection of books and electronic products to help customers use SAS® software to its fullest potential. For more information about our offerings, visit support.sas.com/bookstore or call 1-800-727-3228.

SAS® and all other SAS Institute Inc. product or service names are registered trademarks or trademarks of SAS Institute Inc. in the USA and other countries. ® indicates USA registration.

Other brand and product names are trademarks of their respective companies.

Table of Contents

Installing the QKB	2
Installing on Windows	2
Installing on UNIX	9
Merging With an Existing QKB	12
Configuring Data Jobs	13

Installing the QKB

- [Installing on Windows](#)
- [Installing on UNIX](#)

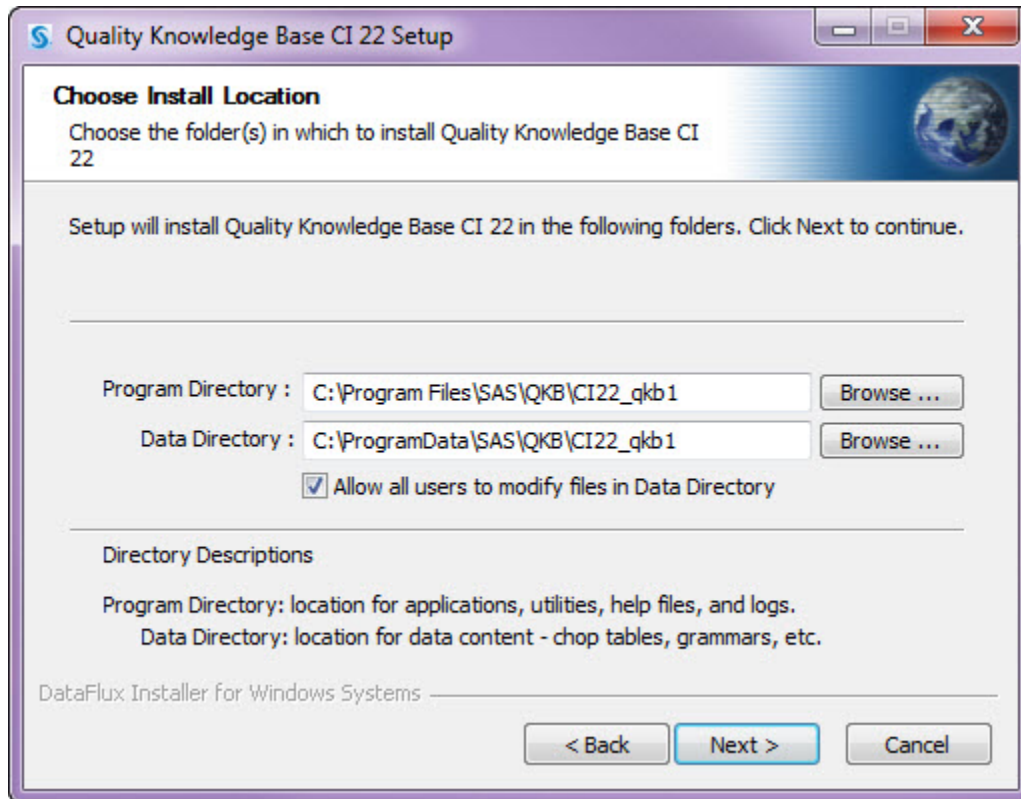
Installing on Windows

This section takes you through the typical installation process for SAS Quality Knowledge Base for Microsoft Windows operating systems.

- [Installation Instructions](#)
- [Locales](#)
- [Registration](#)
- [Command Line Installation Options](#)
- [Windows Directory Layout](#)

Installation Instructions

To launch the QKB setup program on Windows, double-click on the setup application file. During the installation you will be prompted for information. Follow the instructions on the installation dialog box, or see [below](#) for more information:



SAS QKB for Contact Information: Choose Install Location

Program Directory

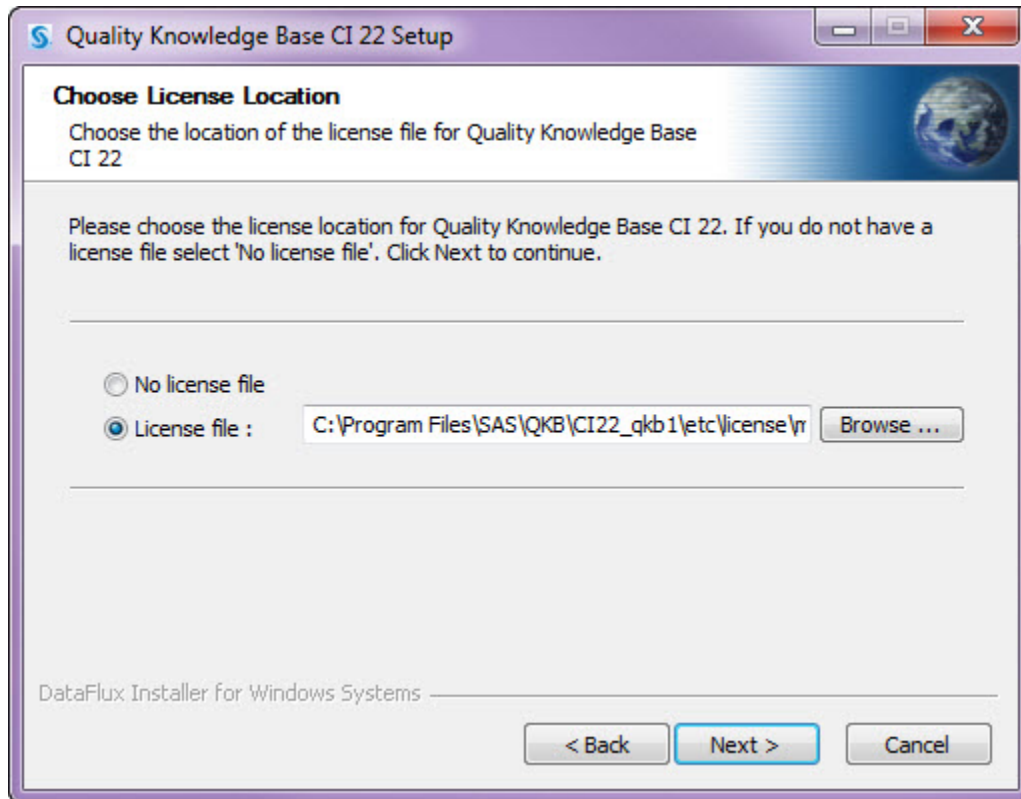
This directory is typically located under your SASHome directory, which is normally in the Program Files directory. The Program Directory contains program files, utilities, help files, and logs. With the exception of the logs, content installed in this directory typically remains unchanged after installation.

Data Directory

This directory is typically located under the ProgramData directory. Contents in this installation can be modified by customizing your QKB. If you are re-installing the QKB, you must select a directory that is different from the directory containing your original QKB data.

Allow all users to modify files in Data Directory

Some Windows environments restrict who can access directories. If you select this option, it enables all authenticated users full access rights to the data directory. If you do not select this option, there are no changes to the security settings of the data directory and an administrator will need to provide users or groups explicit access by using Windows Security, if needed.



SAS QKB for Contact Information: Choose License Location

The options on the Choose License Location dialog include **No license file** and **License file** path:

No license file

Select the **No license file** option to choose from a complete list of available QKB locale(s) that you can install.



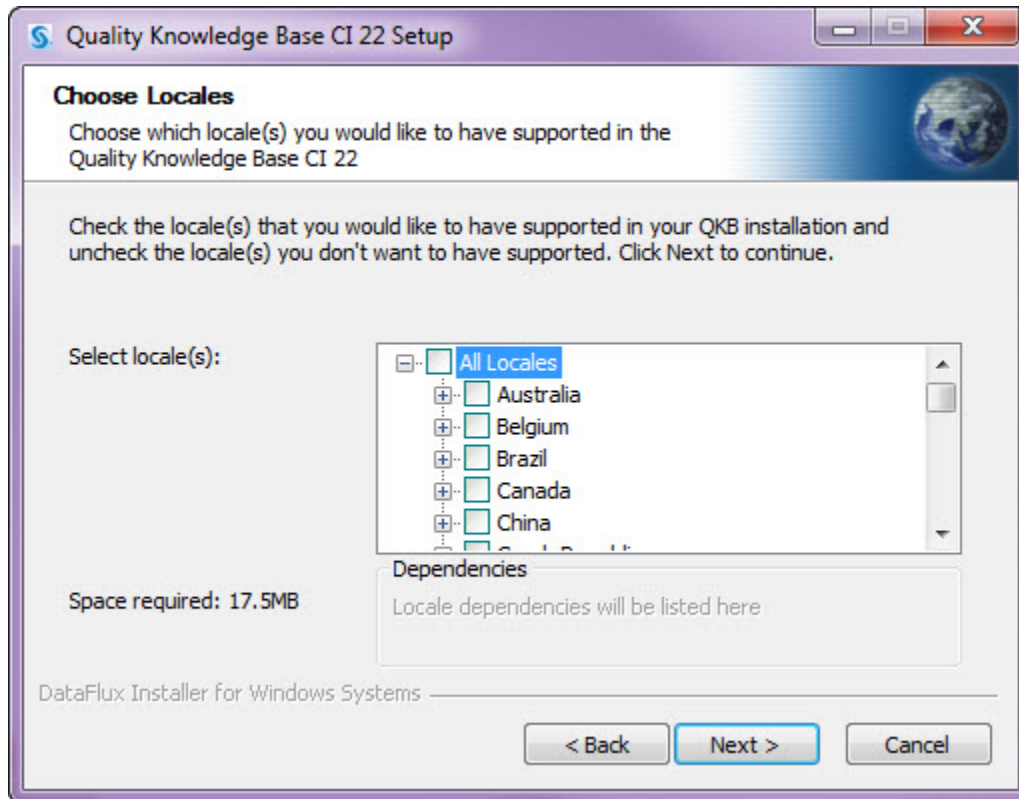
Note: You must have a license to use any of the available QKB locales.

License file

Select the **License file** option when you have your license file. Click **Browse** to locate the path and file name for your license file. This file will be used to determine which QKB locales will be installed.

Choose Locales

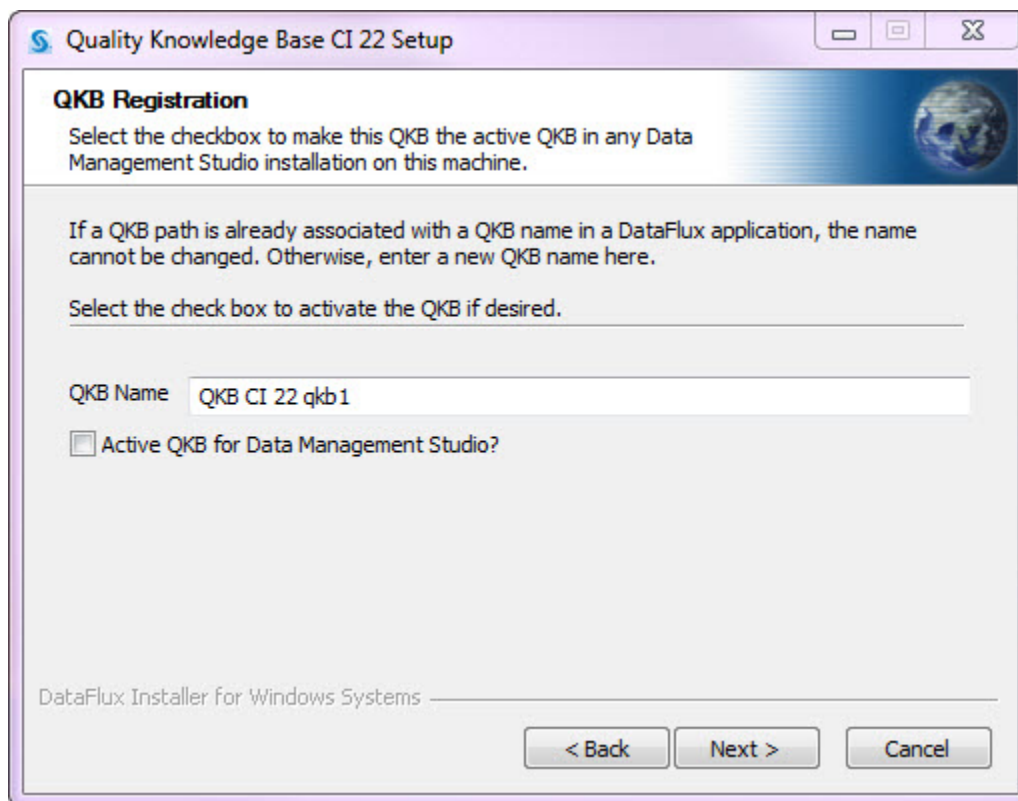
If you selected the **No license file** option on the previous screen, the following dialog box appears with a complete list of available QKB locales. Select one or more locales from the **Select locale(s)** list.



SAS QKB for Contact Information: Choose Locales

QKB Registration

The QKB Registration dialog box appears after you have selected your QKB locales or license file.




SAS QKB for Contact Information: QKB Registration

The QKB name is used to identify the QKB within data management applications. The QKB name must be unique for the system. This means that you cannot use the same name that was used in an earlier QKB installation.

Active QKB for Data Management Studio?

If you want to set the QKB as the active QKB for DataFlux Data Management Studio, click the check box to make the new QKB active.

 **Note:** When you select this option, your previous QKB will become inactive. Consider this carefully and leave the box unchecked if you want to continue to use a previously active QKB. You can activate the new QKB later within DataFlux Data Management Studio.

Command Line Installation Option

To install the QKB on Windows without user intervention, invoke the setup application from the Windows command line using the following parameters:

Parameter	Description
/ACTIVE	If present and set to true, the installed QKB is set to active for both DataFlux Data Management Studio.
/DATADIR	The path for the data directory that contains QKB data and logic files.
/INSTDIR	The path for the program directory that contains installation files and documentation.

Parameter	Description	
/LOCALES	Comma-separated list of ISO Code Names for the locales to be installed. Locale ISO Code Names are listed below:	
	Locale Name	ISO Code Name
	Afrikaans, South Africa	AFZAF
	Arabic, Egypt	AREGY
	Chinese, China	ZNCHN
	Czech, Czech Republic	CSCZE
	Danish, Denmark	DADNK
	Dutch, Belgium	NLBEL
	Dutch, Netherlands	NLNL
	English, Australia	ENAU
	English, Canada	ENCA
	English, Hong Kong	ENHK
	English, India	ENIN
	English, New Zealand	ENNZ
	English, South Africa	ENZAF
	English, United Kingdom	ENGB
	English, United States	ENUS
	Finnish, Finland	FIFIN
	French, Belgium	FRBEL
	French, Canada	FRCA
	French, France	FRFR
	German, Germany	DEDE
	Greek, Greece	ELGR
	Hebrew, Israel	HEIS
	Hungarian, Hungary	HUHUN
	Italian, Italy	ITITA
	Japanese, Japan	JAJP
	Korean, South Korea	KOKOR
	Malay, Malaysia	MSMY
	Norwegian, Norway	NONOR
	Polish, Poland	PLPOL
	Portuguese, Brazil	PTBRA
	Portuguese, Portugal	PTPR
	Russian, Russia	RURUS
	Slovak, Slovakia	SKSV
	Spanish, Mexico	ESME
	Spanish, Spain	ESESP
	Swedish, Sweden	SVSWE
	Thai, Thailand	THTH
	Turkish, Turkey	TRTUR

Parameter	Description
/QKB_NAME	The name assigned to the QKB.
/S	Case-sensitive capital 'S' tells the installer to perform a silent install.

Below is an example of the command line with parameters for installing the English (United States) and French (France) locales:

```
qkb-ci-v22-win64.exe /S /QKB_NAME="SAS QKB CI 22"
  /INSTDIR="C:\Program Files\SAS\QKB\CI\22"
  /DATADIR="C:\ProgramData\SAS\QKB\CI\22"
  /ACTIVE=true /LOCALES="ENUSA,FRFRA"
```



Note: For 32-bit Windows installations, the name of the setup application is qkb-ci-v22-win32.exe. For 64-bit Windows installations, the name of the setup application is qkb-ci-v22-win64.exe.

Windows Directory Layout

- [Program Directory](#)
- [Data Directory](#)

Program Directory

After your installation is complete, you will have the following subdirectories in your program directory:

Directory	Description
bin	Executable files for this platform
data	Data specific to this installation
doc	Detailed QKB documentation in HTML format
lib	Library files for this platform
share	Shared (not platform-specific) data

Data Directory

You will have the following subdirectories in your data directory:

Directory	Description
chopinfo	Chop table files used in QKB definitions
grammar	Grammar files used in QKB definitions
locale	Meta-data about QKB data types and definitions
phonetx	Phonetics libraries used in QKB definitions
scheme	Scheme files used in QKB definitions or applied directly to data in a data job
vocab	Vocabulary files used in QKB definitions

Installing on UNIX

This section takes you through the typical installation process for SAS Quality Knowledge Base for UNIX operating systems.

- [Installation Instructions](#)
- [License Instructions](#)
- [Re-install or Upgrade Your QKB](#)
- [UNIX Directory Layout](#)

Installation Instructions

Enter the following commands at your UNIX command prompt:

```
cd /opt/sas
```

If you want to install your SAS software in a directory other than /opt/sas, use that location in place of /opt/sas. Please note that all files will be installed in a subdirectory called qkb.

```
gzip -c -d PATH_TO/qkb-ci-v22-PLATFORM.tar.gz | tar xvf -
```

Replace PATH_TO in the above command with the directory in which you have copied the tar file and PLATFORM with the platform name (linux, sol64, etc.).

```
perl qkb/install.pl
```

The install script will now take control of the installation process. You will be prompted for information about where to install the QKB data files and which locales you want your QKB installation to support.

License Instructions

During the installation you will be prompted regarding the QKB license file. You should have a SAS license file for the QKB.

If you have a license file for this QKB, only the locales you have licensed will be installed. If you do not have a license file, you must choose the locales to be installed individually.

Do you have a license file? (y/n) [n]:

If you answer 'y' you will be prompted for the location (path and file name) of the license file. This file will be used to determine which QKB locales will be installed.

If you answer 'n' you will be shown a list of QKB locales from which to choose for your installation.



Note: You must have a license to use any of the available QKB locales.

Re-install or Upgrade Your QKB

During a re-install or upgrade you might encounter the following prompts. Answer each prompt as appropriate for your site.

You have chosen a location that already contains an instance of Quality Knowledge Base - CI - 22.
Re-install the software in this location? (y/n) [n]:

This means that this QKB has already been installed in the installation directory that you selected. If you answer 'y', a confirmation prompt follows.

If you answer 'n', the installation will stop and you will need to re-run the install script and select a different install location.

You have chosen a location that already has another SAS product installed.
Product: Quality Knowledge Base - CI - 2013A.
Please choose another location for this installation.

An earlier version of the QKB has been installed in the same location. The installation stops, and you will need to re-run the install script and select a different install location.

Do you want to replace the data in the existing data directory? The existing data will be copied to a backup directory. If you choose not to replace the existing data, you can choose a new location for the data.
Replace existing data? (y/n) [y]:

This prompt asks you to confirm that you want to back up and replace the existing files in either a re-installation or upgrade. If you answer 'y', the directories listed above will be backed up. If you answer 'n', the installation will stop and you will need to re-run the install script and select a different install location.

UNIX Directory Layout

After your installation is complete, you will have the following subdirectories in your installation directory:

Directory	Description
qkb/bin	Executable files for this platform. The QKB Merge Tool and script are installed here
qkb/data	Data specific to this installation
qkb/doc	This directory includes detailed QKB documentation in HTML format
qkb/lib	Library files for this platform

Directory	Description
qkb/share	Shared (not platform-specific) data
qkb/install.pl	The installer, refer to the installation instructions above
qkb/ReleaseNotes	Release notes for this platform
qkb/README	A text file containing brief information about getting started

Merging With an Existing QKB

If you made customizations in a previously installed QKB, you might want to merge your newly installed QKB with the previous QKB so that you can use your customizations inside the new QKB. Refer to the “Merging Your QKB’s” section of your QKB documentation for instructions on how to merge two QKB’s.

Configuring Data Jobs

The following are recommendations for Data Jobs accessing this QKB:

- Set the Parse Resource Limit option to HIGH for jobs using the Phone, Phone (with Country Code), and Phone (Electronic) parse, standardization, or match definitions for the following locale:

German, Germany

- Set the Parse Resource Limit option to HIGH for jobs run using the Phone parse, standardization, or match definitions for the following locales:

Czech, Czech Republic

English, Australia

English, United Kingdom

English, United States

Japanese, Japan

Spanish, Spain

Slovak, Slovakia

- Set the Parse Resource Limit option to HIGH for jobs run using the Name (Multiple Name) parse, standardization, or match definitions for the following locales:

Dutch, Belgium

English, Australia

English, Canada

English, India

English, New Zealand

English, United Kingdom

English, United States

Finnish, Finland

French, Canada

Spanish, Spain

- Set the Parse Resource Limit option to VERY HIGH for jobs run using the Address and Address (Full) parse, standardization, and match definitions for the following locales:

English, United Kingdom

Japanese, Japan

- Set the Parse Resource Limit option to INTENSIVE for jobs run using the Address and Address (Full) parse, standardization, and match definitions for the following locale:

English, India

- Set the Parse Resource Limit option be set to HIGH for jobs run using the Address and Address (Full) parse, standardization, and match definitions for the following locale:

Korean, South Korea