

SAS Macro Variable Viewer and System Options Viewer

Two custom add-ins for SAS Enterprise Guide 4.3

These two custom tasks provide valuable visibility into the settings that affect your SAS session. The System Options viewer shows the current values of each SAS system option and graph option. The Macro Variable viewer shows all Automatic and Global macro variables that are defined in your current SAS session, and allows you to test out macro expressions that use these variables.

How to Install

Installation is simple: copy the custom task DLL to a designated folder on your system, and SAS Enterprise Guide will detect the task automatically.

To install for use by the current user:

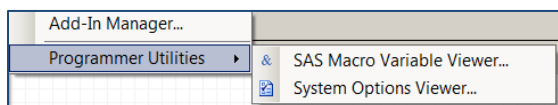
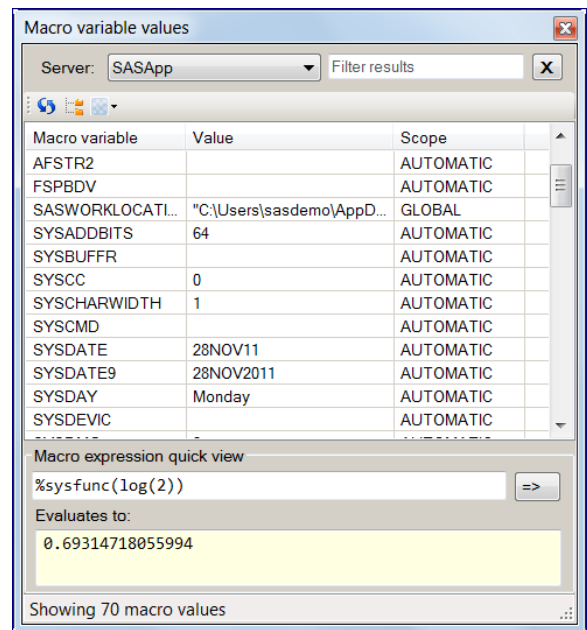
- Copy SAS.MacroViewer.dll to
`%appdata%\SAS\EnterpriseGuide\4.3\Custom`

Notes:

- `%appdata%` is a Windows environment variable that maps to your user profile area. The resolved path will differ depending on your user account and the version of Windows.
- If this is your first custom task, you will need to create the Custom subfolder.

To install for use by all users on the machine (for example, Citrix or Terminal Server installations):

- Copy **SAS.MacroViewer.dll** to the Custom subfolder of the SAS Enterprise Guide application directory. This location can vary depending on your installation and the version of SAS. For example: **C:\Program Files\SAS\EnterpriseGuide\4.3\Custom** or **C:\Program Files\SASHome\x86\SASEnterpriseGuide\4.3\Custom**.
- If this is your first custom task, you will need to create the Custom subfolder.



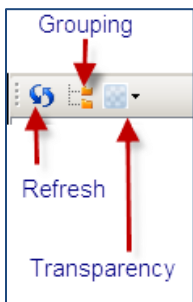
After copying the DLL file into place, start a new SAS Enterprise Guide session. The task is accessible from the Tools menu, within a subgroup named "Programmer Utilities".

Features of the SAS Macro Variable viewer

This add-in offers the following main features.

Always-visible window: Once you open the task from the Tools menu, you can leave it open for your entire SAS Enterprise Guide session. The window uses a "modeless" display, so you can still interact with other SAS Enterprise Guide features while the window is visible. This makes it easy to switch between SAS programs and other SAS Enterprise Guide windows and the macro variable viewer to see results.

Select active SAS server: If your SAS environment contains multiple SAS workspace connections, you can switch among the different servers to see macro values on multiple systems.



One-click refresh: Refresh the list of macro variables by clicking on the Refresh button in the toolbar.

View by scope or as a straight list: View the macro variables in their scope categories (for example, Global and Automatic) or as a straight list, sorted by variable name or current value. Click on the column headers to sort the list.

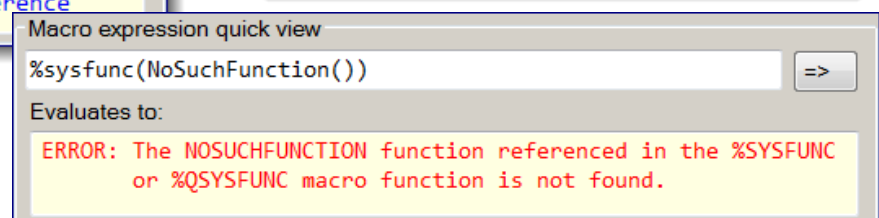
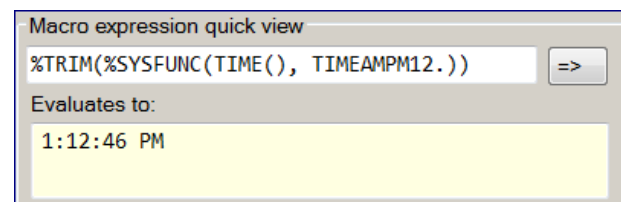
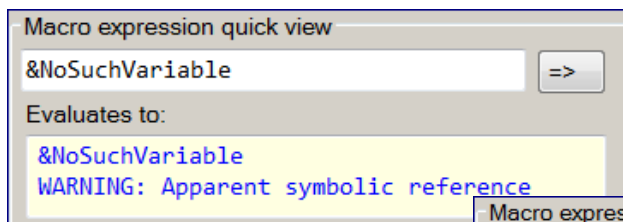
Set window transparency: You can make the window appear "see-through" so that it doesn't completely obscure your other windows as you work with it.

Filter results: Type a string of characters in the "Filter results" field, and the list of macro variable results will be instantly filtered to those that contain the sequence that you type. The filtered results will match on variable names as well as values, and the search is case-insensitive. This is a convenient way to narrow the list to just a few variables that you're interested in. To clear the filter, click on the **X** button next to the "Filter results" field, or "blank out" the text field.

Macro variable	Value	Scope
SASWORKLOCATI...	"C:\Users\sasdemo\AppData...	GLOBAL
SYSODSPATH	WORK.TEMPLAT(UPDA...	AUTOMATIC
SYSUSERID	sasdemo	AUTOMATIC
_CLIENTAPP	'SAS Enterprise Guide'	GLOBAL
_CLIENTUSERID	'saschr'	GLOBAL
_METAUSER	sasdemo@173391	GLOBAL
_SASHOSTNAME	'173391.na.SAS.com'	GLOBAL
_SASSERVERNAME	'SASApp'	GLOBAL

Copy macro variables as %LET statements: Select one or more macro variables within the window, right-click and select **Copy assignments**. This generates a series of %LET statements for each macro variable/value pair, which you can then paste into a SAS program.

Macro expression "quick view": Have you ever wanted to test out a macro expression before using it in a longer program? This window allows you to get immediate feedback on a macro expression, whether a simple macro reference or a more complex expression with nested functions. If the expression generates a SAS warning or error, the feedback window shows that as well. **Note:** the expression can be any macro expression that is valid for the right-side of a macro variable assignment (%let statement).

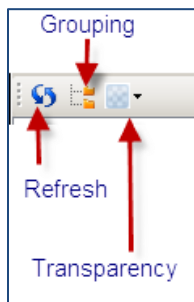


Features of the SAS System Options Viewer

This add-in offers the following main features.

Always-visible window: Once you open the task from the Tools menu, you can leave it open for your entire SAS Enterprise Guide session. The window uses a "modeless" display, so you can still interact with other SAS Enterprise Guide features while the window is visible. This makes it easy to switch between SAS programs and other SAS Enterprise Guide windows and the options viewer to see results.

Select active SAS server: If your SAS environment contains multiple SAS workspace connections, you can switch among the different servers to see options values on multiple systems.




One-click refresh: Refresh the list of option values by clicking on the Refresh button in the toolbar.

View by group or as a straight list: View the option values in their group categories (for example, MEMORY, GRAPHICS, EMAIL, etc.) or as a straight list, sorted by option name or current value. Click on the column headers to sort the list.

Set window transparency: You can make the window appear "see-through" so that it doesn't completely obscure your other windows as you work with it.

Filter results: Type a string of characters in the "Filter results" field, and the list of options will be instantly filtered to those that contain the sequence that you type. The filtered results will match on option names as well as values, and the search is case-insensitive. This is a convenient way to narrow the list to just a few options that you're interested in. To clear the filter, click on the X button next to the "Filter results" field, or "blank out" the text field.

Show option details: The "About" pane at the bottom of the window shows details about the currently selected option, including the current value, its value at session startup (SAS 9.3 only), where the option can be set (in OPTIONS statement or startup) and how the current value was set. You can show or hide this pane by clicking a toggle button  at the top of the window.

