

# Import Data from SharePoint List

---

## Supported Versions

This custom task was built against the Enterprise Guide version 4.3 dlls and will work with 5.1 and 6.1. I have tested mostly with 4.3 but have done some high level testing with 5.1 and 6.1.

## Zip File Contents

1. Import Data from SharePoint List.docx – this file
2. ImportSPListToEG.dll – the EG Custom Task DLL
3. Complete Source Code

## Custom Task Installation Instructions

Extract ImportSPListToEG.dll from the zip file into the EG Custom Task directory, for EG 4.3 this is located in SASHOME\%SAS%\SASEnterpriseGuide\4.3\Custom, where SASHOME is the directory that SAS Was installed to. EG 5.1 and later the custom task directory is located C:\Users\<userid>\AppData\Roaming\SAS\EnterpriseGuide\5.1\Custom. In both cases if the “Custom” directory does not exist you will need to create one. In the 5.1 case, AppData is a hidden directory and won’t show up in the windows file explorer unless you have the option set to view hidden files and folders. You can just type it into the file explorer’s address bar and press enter and it will navigate there, or use the command prompt window. You will need to locate the SharePoint client side DLL’s and copy them to this directory if they do not already exist in the machines “PATH” environment variable. They can be obtained from the SharePoint server machine or for the SharePoint 2010 redistributable package navigate to <http://www.microsoft.com/en-us/download/details.aspx?id=21786>. If you have issues with the task not loading or showing up correctly in the Enterprise Guide Menu, you may have to “unblock” it. Instructions for this procedure can be found here <http://blogs.sas.com/content/sasdummy/2013/05/19/unblocking-custom-task-dlls/>

## Usage Instructions

After copying the files into the custom directory, start Enterprise Guide, If it was already running you will have to close and restart. When Enterprise Guide is started and ready the task will show up under the Tools->Add-In menu item. Select ImportFromSharePointListTask... menu item and a new task window will appear.

Import Data From SharePoint List

SharePoint url:

Select List

Selected List

Title: Description:  
Item Count: List ID:

Selected Columns

SharePoint Column	SAS Column Name	SAS Column Type	SAS Format
-------------------	-----------------	-----------------	------------

Move Up  
Move Down  
New  
Delete  
Properties

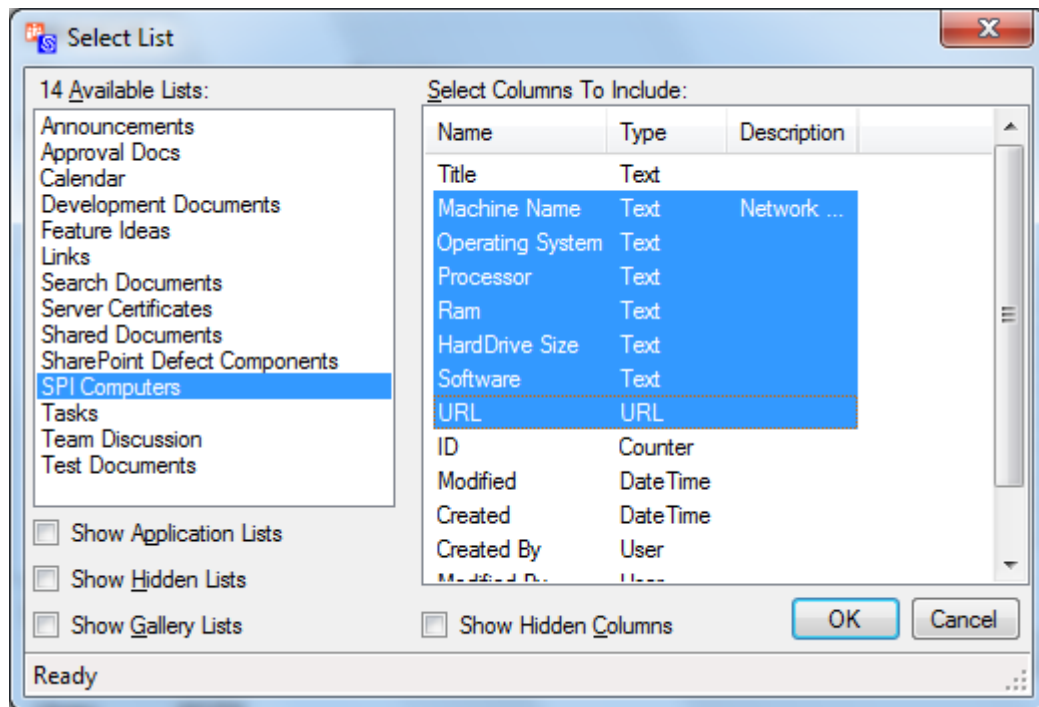
SAS Dataset:

Server: SASApp  
Library: WORK  
Dataset: SPLIST

Save As

OK Cancel

Enter the url to the site where the list exists and click the Select List button.



The Select List window appears. If your site is remote or acting slow or has a lot of lists, it may take a while. Select the list you want to import from the left and then multi select (ctrl+click) the columns you wish to include. Then click OK. Note: not all columns will display. Please see the section Supported SharePoint Column Types to a list of support columns.

**Import Data From SharePoint List**

SharePoint url:  
 Select List

**Selected List**

Title: SPI Computers    Description:  
 Item Count: 27    List ID: bddf32b1-7b9d-4cc7-9948-25f1dac7caf4

**Selected Columns**

SharePoint Column	SAS Column Name	SAS Column Type	SAS Format
Machine Name	Machine_Name	Character	\$CHAR255.
Processor	Processor	Character	\$CHAR255.
Software	Software	Character	\$CHAR255.
URL	URL	Character	\$CHAR255.
Created	Created	Numeric	DATETIME16.
Created By	Author	Character	\$CHAR255.

Move Up  
Move Down  
New  
Delete  
Properties

**SAS Dataset:**

Server: SASApp Save As  
 Library: WORK  
 Dataset: SPLIST

OK Cancel

You can change the order with the Move Up, Move Down buttons, if you forgot a column while in the Select List window, click the New button and a window with a list of all available columns that you did not pick will appear, if you change your mind and don't want one of the columns you picked, select it and click the Delete button. If you want to change any of the SAS column properties, select the column and click Properties.

The default dataset will be on your default server in the work directory called SPLIST, if you wish to save it to a more permanent place or plan to run more than one of these at a time in a process flow, click Save As to set the location for the new dataset. When you are happy with the SAS Output options and dataset, click OK to run the task and create the dataset.

## Supported SharePoint Column Types

1. Single line of text
2. Multiple lines of text
3. Choice
4. Number
5. Currency

6. Data and Time
7. Yes/No
8. Person or Group
9. Hyperlink or Picture

## Source Code Usage

The Source code for this project was built and saved with Microsoft Visual Studio Express 2013 for Windows Desktop. Extract the contents of the SourceCode folder to your local computer. Copy the following SharePoint DLLs into the ImportSPListToEG\references folder. These can be obtained from the Microsoft SharePoint server or from the publically available redistributable package.

<http://www.microsoft.com/en-us/download/details.aspx?id=21786>

1. Microsoft.SharePoint.Client.dll
2. Microsoft.SharePoint.Client.Runtime.dll

Copy the following Enterprise Guide DLLs from the Enterprise Guide Install directory, or modify the references in the solution to point to the DLL's on your hard drive.

1. SAS.EG.Controls.dll
2. SAS.Shared.AddIns.dll
3. SAS.Shared.dll
4. SAS.SharedUI.dll
5. SAS.Tasks.Toolkit.dll
6. SASInterop.dll