

## Gain Insight about your SAS Enterprise Guide Project with Project Reviewer

The **Project Reviewer** is a custom task that allows you to:

- See all process flows within your project
- See all tasks and programs within each flow
- See how much time each task and program takes to run
- See the total run time for each process flow
- Create a report that collects all of this information together, and summarizes across the project

Tasks and programs in DonorsChoose							
Process Flow=Autoexec							
ordinal	Task	Type	User ID	Runtime (seconds)	Created on	Modified on	Error?
1	Assign DC library	SAS program	saschrh	2.21	18APR2011:03:39:03	27FEB2012:11:00:56	N
Items in flow: 1							
Process Flow=Import DonorsChoose CSV							
ordinal	Task	Type	User ID	Runtime (seconds)	Created on	Modified on	Error?
1	Assign Library	SAS program	saschrh	0.21	18APR2011:03:39:03	27FEB2012:11:01:15	N
2	Import Essays	SAS program	saschrh	356.81	24JUN2011:04:25:44	27FEB2012:11:01:15	N
3	Import Donations	Import data	saschrh	526.06	18APR2011:03:39:56	27FEB2012:11:07:12	N
4	Import Gift Cards	Import data	saschrh	373.21	24JUN2011:02:15:34	27FEB2012:11:07:13	N
5	Import Projects	Import data	saschrh	423.23	24JUN2011:02:48:01	27FEB2012:11:07:13	N
6	Import Resources	Import data	saschrh	589.82	24JUN2011:04:11:02	27FEB2012:11:07:13	N
7	Optimize Data (LONG!)	SAS program	saschrh	2639.90	01JUL2011:04:31:15	27FEB2012:11:01:15	N
Process Flow				4909.23			
Items in flow: 7							
Process Flow=Data Descriptors							
ordinal	Task	Type	User ID	Runtime (seconds)	Created on	Modified on	Error?
1	Characterize Data	Task	saschrh	936.12	26JUL2011:02:52:06	26JUL2011:02:52:52	N
2	Column Descriptors/Query build	Task	saschrh	938.26	26JUL2011:04:42:15	26JUL2011:04:42:15	N

## Background

SAS Enterprise Guide allows you to organize your SAS programming and task work into projects. This is helpful for productivity, but for large projects it can be difficult to see everything that the project contains.

Also, it can be difficult to know how much time a project will take to run. Each runnable task maintains a record of how long it took to run during its most recent iteration, but there is no way to see this information across an entire process flow or over the entire project.

This task helps to cover that gap within SAS Enterprise Guide.

## How to Install

Installation is simple: copy the custom task DLL to a designated folder on your system, and SAS Enterprise Guide will detect the task automatically.

Update 05MAR2015: note that there is a different DLL for use with SAS Enterprise Guide 7.1 and for 7.11. Be sure to copy the proper DLL, **and only that DLL**, to the proper Custom tasks folder for v7.1 or v7.11.

To install for use by the current user:

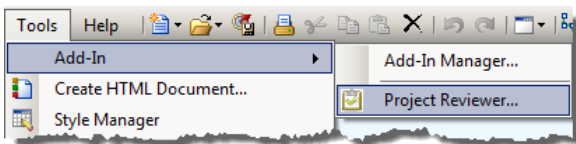
- EG 4.3: Copy **SAS.Tasks.ProjectReviewer.dll** to %appdata%\SAS\EnterpriseGuide\4.3\Custom
- EG 5.1: Copy **SAS.Tasks.ProjectReviewer.dll** to %appdata%\SAS\EnterpriseGuide\5.1\Custom
- EG 6.1: Copy **SAS.Tasks.ProjectReviewer.dll** to %appdata%\SAS\EnterpriseGuide\6.1\Custom
- EG 7.1: Copy **SAS.Tasks.ProjectReviewer71.dll** to %appdata%\SAS\EnterpriseGuide\7.1\Custom
- EG 7.11: Copy **SAS.Tasks.ProjectReviewer711.dll** to %appdata%\SAS\EnterpriseGuide\7.1\Custom

Notes:

- *%appdata%* is a Windows environment variable that maps to your user profile area. The resolved path will differ depending on your user account and the version of Windows.
- If this is your first custom task, you will need to create the Custom subfolder.

To install for use by all users on the machine (for example, Citrix or Terminal Server installations):

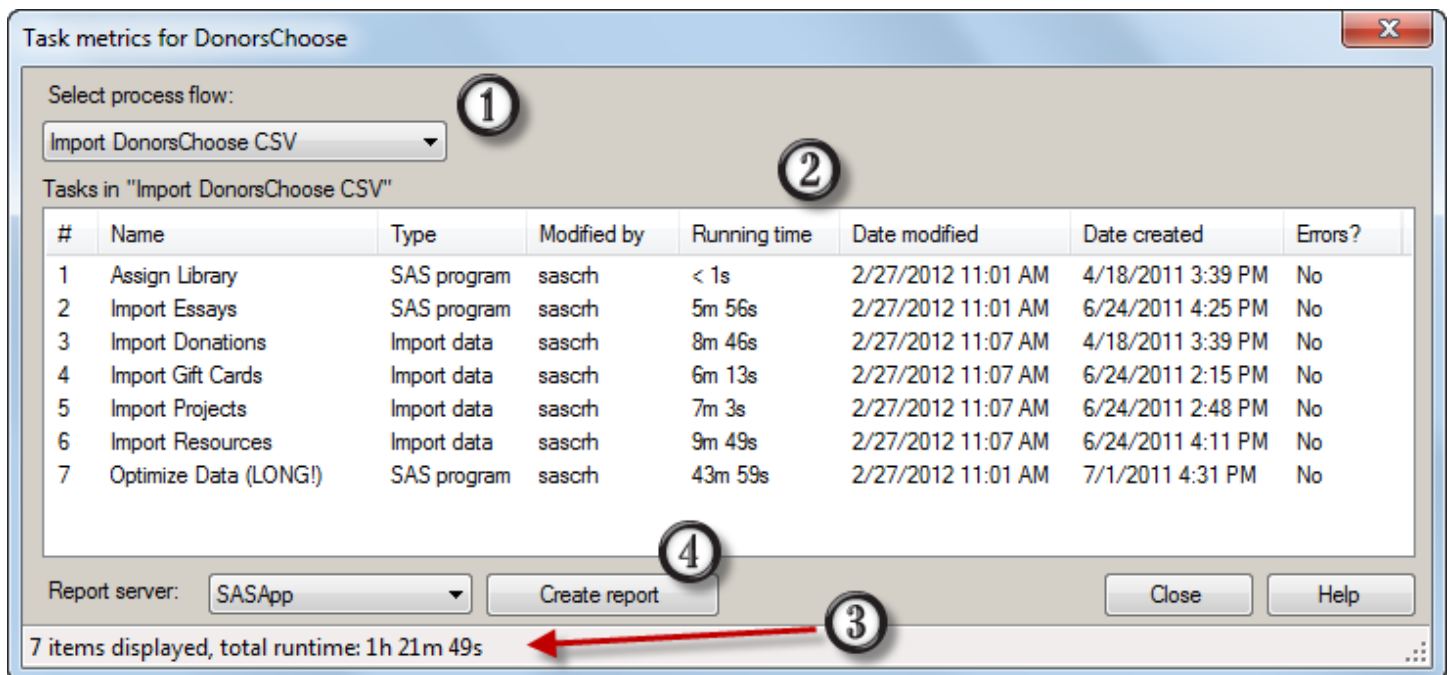
- Copy **SAS.Tasks.ProjectReviewer.dll** (or **SAS.Tasks.ProjectReviewer71.dll** or **SAS.Tasks.ProjectReviewer711.dll**) to the Custom subfolder of the SAS Enterprise Guide application directory. This location can vary depending on your installation and the version of SAS. For example: **C:\Program Files\SAS\EnterpriseGuide\4.3\Custom** or **C:\Program Files\SASHome\x86\SASEnterpriseGuide\4.3\Custom**.
- If this is your first custom task, you will need to create the Custom subfolder.



After copying the DLL file into place, start a new SAS Enterprise Guide session. The task is accessible from the Tools menu.

## Features of Project Reviewer

The Project Reviewer task presents a list of the tasks and programs that can be run within your project.



The features of the task user interface include:

1. A selection list with all of the process flows within your project
2. A list of each "runnable" task; that is, program, task, query, export step, etc. Each task has an "ordinal" (its sequence in the process flow), a name, a descriptive type, the user ID of the last person to modify it, the running time for its most recent iteration, the date/time modified, the date/time created, and whether the task generated errors ("red X" in the flow).

You can sort the items in the list by clicking on the column header for the value you want to sort. Click on the column header again to reverse the sort sequence.

3. A summary of the task count, and total clock time that "running" the flow represents.
4. A **Create Report** button, which generates a SAS program to produce a simple report of all of the project contents, summarized by each process flow. If you have multiple SAS environments, you can use the **Report server** list to select which SAS server to use when processing the report.

The Create Report step results in a simple ODS report, as well as an output data set that you can use for additional reporting. The data and report steps are captured in a SAS program, which you can copy and modify for your own purposes.

Project Reviewer										
Code Log Output Data Results										
Modify Task Filter and Sort Query Builder Data Describe Graph Analyze Export Send To										
	processflow	ordinal	taskname	type	user	runtime	created	modified	hasError	
1	Autoexec	1	Assign DC library	SAS program	saschrh	2.21	18APR2011:03:3...	27FEB2012:11:0...	N	
2	Import DonorsCh...	1	Assign Library	SAS program	saschrh	0.21	18APR2011:03:3...	27FEB2012:11:0...	N	
3	Import DonorsCh...	2	Import Essays	SAS program	saschrh	356.81	24JUN2011:04:2...	27FEB2012:11:0...	N	
4	Import DonorsCh...	3	Import Donations	Import data	saschrh	526.05	18APR2011:03:3...	27FEB2012:11:0...	N	
5	Import DonorsCh...	4	Import Gift Cards	Import data	saschrh	373.21	24JUN2011:02:1...	27FEB2012:11:0...	N	
6	Import DonorsCh...	5	Import Projects	Import data	saschrh	423.23	24JUN2011:02:4...	27FEB2012:11:0...	N	
7	Import DonorsCh...	6	Import Resources	Import data	saschrh	589.82	24JUN2011:04:1...	27FEB2012:11:0...	N	
8	Import DonorsCh...	7	Optimize Data (L...	SAS program	saschrh	2639.9	01JUL2011:04:3...	27FEB2012:11:0...	N	
9	Data Descriptors	1	Characterize Data	Task	saschrh	936.12	26JUL2011:02:5...	26JUL2011:02:5...	N	
10	Data Descriptors	2	Column descripti...	Query builder	saschrh	0.28	26JUL2011:12:1...	26JUL2011:02:3...	N	
11	Data Descriptors	3	Data Description	Query builder	saschrh	0.34	26JUL2011:12:1...	26JUL2011:02:3...	N	
12	Data Quality	1	Calc Project Cost	Query builder	saschrh	1.67	10JUL2011:02:2...	26JUL2011:04:2...	N	
13	Data Quality	2	Join with Project...	Query builder	saschrh	1.92	10JUL2011:03:3...	26JUL2011:04:2...	N	

## Feedback

If you have suggestions or problems with this task, please send your input to:

[Chris.Hemedinger@sas.com](mailto:Chris.Hemedinger@sas.com)

<http://blogs.sas.com/sasdummy>