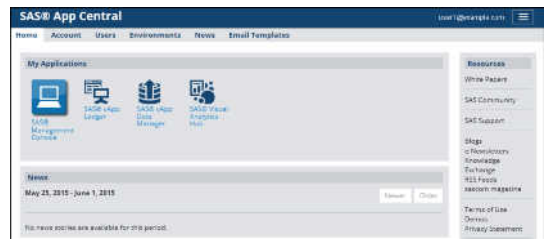


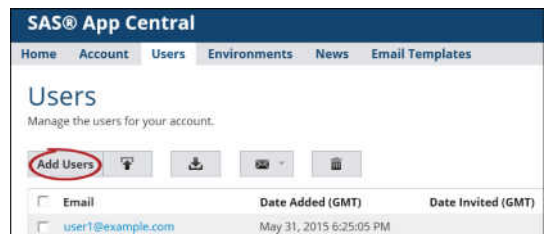


SAS[®] Visual Analytics 7.3 and SAS[®] Visual Statistics 7.3 for SAS[®] Cloud: Quick-Start Guide

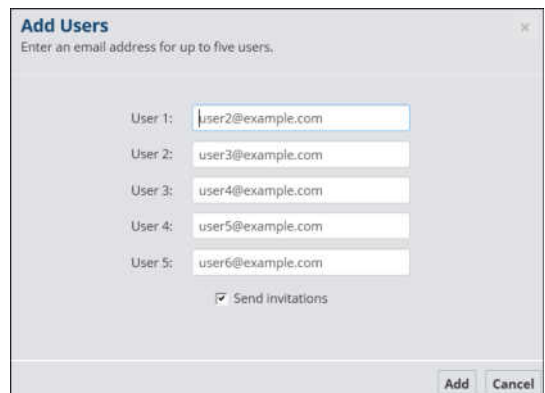
- 1 Go to <http://cloud.sas.com> and log in with your SAS Profile. SAS App Central opens. From here, you can set up your account and launch applications.



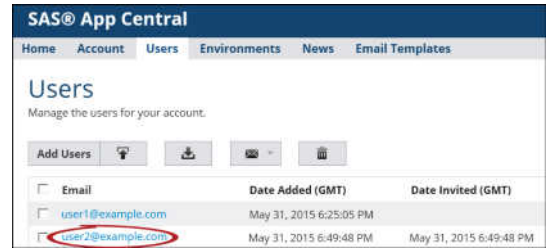
- 2 On the **Users** tab, click **Add Users**.



- 3 In the Add Users window, enter email addresses and send invitations to one to five users. Click **Add**.



- 4 On the **Users** tab, click a user's email address to assign the user to a role and to an environment.



- 5 In the **Roles** section on the user's information page, click **Edit**.



- 6 In the Edit Roles window, select one or more roles for the user. Click **OK**.

Note: Assign the data administrator role to any user who will be uploading data. For more role details, see *SAS Visual Analytics for SAS Cloud: Onboarding Guide* at <http://support.sas.com/documentation/prod-p/cloudva/>.



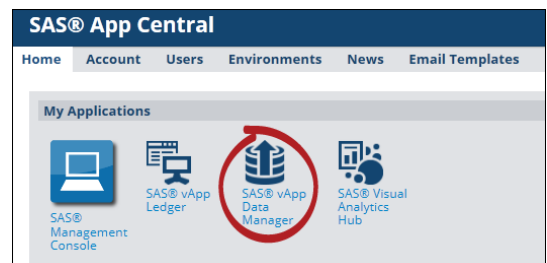
- 7 In the **Environments** section on the user's information page, click **Edit**.



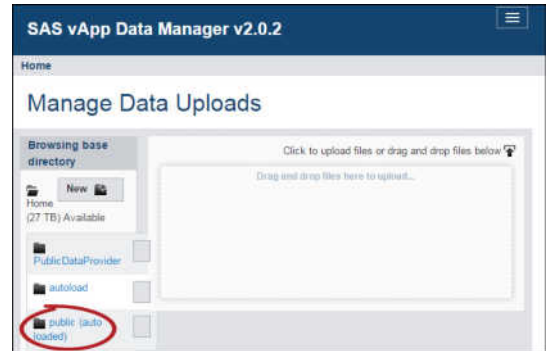
- 8 In the Edit Environments window, select **SAS Visual Analytics** and click **OK**.

- 9 Repeat steps 4 through 8 for each user.

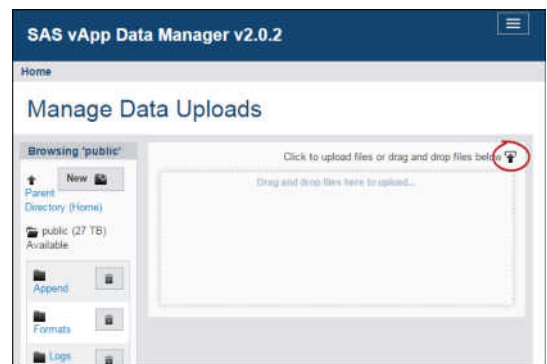
- 10 Click the **Home** tab in SAS App Central. Under **My Applications**, click **SAS vApp Data Manager**. You use this application to upload the data that you want to analyze.



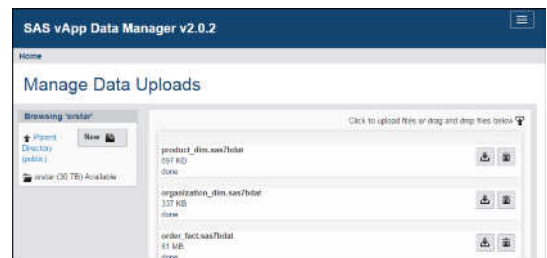
- 11 In SAS vApp Data Manager, select the **public (auto loaded)** directory.



- 12 Click the **Upload** icon at the top of the right pane.



- 13 In Windows File Manager, navigate to the files that you want to upload. Select the files, and click **Open**. The files are uploaded and displayed in the right pane.



In about five minutes (depending on the size of your data), the files are automatically loaded to the SAS LASR Analytic Server. In SAS Visual Statistics and SAS Visual Analytics, you can find the files in **Shared Data/SAS Visual Analytics/Public/LASR**.

Note: For other data loading methods, see *SAS Visual Analytics for SAS Cloud: Onboarding Guide* at <http://support.sas.com/documentation/onlinedoc/prod-p/cloudva/>.

Additional resources:

- SAS Visual Analytics for SAS Cloud documentation: <http://support.sas.com/documentation/prod-p/cloudva/>
- SAS Visual Analytics resources: <http://support.sas.com/software/products/va>