



THE
POWER
TO KNOW.

SAS[®] Contextual Extraction Studio 5.2 Installation Guide



The correct bibliographic citation for this manual is as follows: SAS Institute Inc. 2011.
SAS® Contextual Extraction Studio 5.2: Installation Guide. Cary, NC: SAS Institute Inc.

SAS® Contextual Extraction Studio 5.2: Installation Guide

Copyright © 2011, SAS Institute Inc., Cary, NC, USA

All rights reserved. Produced in the United States of America.

For a hard-copy book: No part of this publication may be reproduced, stored in a retrieval system, or transmitted, in any form or by any means, electronic, mechanical, photocopying, or otherwise, without the prior written permission of the publisher, SAS Institute Inc.

For a Web download or e-book: Your use of this publication shall be governed by the terms established by the vendor at the time you acquire this publication.

The scanning, uploading, and distribution of this book via the Internet or any other means without the permission of the publisher is illegal and punishable by law. Please purchase only authorized electronic editions and do not participate in or encourage electronic piracy of copyrighted materials. Your support of others' rights is appreciated.

U.S. Government Restricted Rights Notice: Use, duplication, or disclosure of this software and related documentation by the U.S. government is subject to the Agreement with SAS Institute and the restrictions set forth in FAR 52.227-19, Commercial Computer Software-Restricted Rights (June 1987).

SAS Institute Inc., SAS Campus Drive, Cary, North Carolina 27513.

1st electronic book, July 2011

SAS® Publishing provides a complete selection of books and electronic products to help customers use SAS software to its fullest potential. For more information about our e-books, e-learning products, CDs, and hard-copy books, visit the SAS Publishing Web site at support.sas.com/publishing or call 1-800-727-3228.

SAS® and all other SAS Institute Inc. product or service names are registered trademarks or trademarks of SAS Institute Inc. in the USA and other countries. ® indicates USA registration.

Other brand and product names are registered trademarks or trademarks of their respective companies.

Contents

Installing SAS Contextual Extraction Studio	1
1.1 About This Book	1
1.1.1 Audience	1
1.1.2 Prerequisites	1
1.1.3 Conventions	1
1.2 Introduction to SAS Contextual Extraction Studio	2
1.2.1 What is SAS Contextual Extraction Studio?	2
1.2.2 Overview of Installation	2
1.2.3 Prerequisite System Requirements	2
1.3 Installing SAS Contextual Extraction Studio	3
1.3.1 Before Installing	3
1.3.2 Use the InstallShield Wizard	3
1.4 Uninstall on Windows	7
Recommended Reading	9
Index	11

Installing SAS Contextual Extraction Studio

1.1 About This Book

1.1.1 Audience

SAS Contextual Extraction Studio: Installation Guide is designed for users and administrators who install this software.

1.1.2 Prerequisites

Here are the prerequisites for installing SAS Contextual Extraction Studio:

- Use only the supported hardware
- SAS Content Categorization Studio loaded onto your machine

1.1.3 Conventions

This manual uses the following typographical conventions:

Convention	Description
<code>SAS_ContextualExt_Studio_Setup.exe</code>	The code examples for the .exe file are shown in a fixed-width font.
Browse button	The labels for user interface controls are shown in a bold, sans-serif font.
www.sas.com	The hypertext links are shown in a light blue, fixed-width font, and are underlined.

1.2 Introduction to SAS Contextual Extraction Studio

1.2.1 What is SAS Contextual Extraction Studio?

SAS Contextual Extraction Studio, or LITI, uses advanced linguistic technologies to extend the concept rule-writing capabilities that are available in SAS Content Categorization Studio.

1.2.2 Overview of Installation

This chapter explains the hardware requirements and the installation process for SAS Contextual Extraction Studio. SAS Contextual Extraction Studio works with SAS Content Categorization Studio as an add-on component. For this reason, install SAS Contextual Extraction Studio only after you install SAS Content Categorization Studio. For more information about installing SAS Content Categorization Studio, see the *SAS Content Categorization Studio: Installation Guide*.

1.2.3 Prerequisite System Requirements

Configure the local machine where you install SAS Contextual Extraction Studio according to the recommended system configuration:

CPU

x86 with 1 GHz or higher required

RAM

1 GB or higher is recommended, but this base number depends on the size of the project that you build

Supported operating system

Windows x86

1.3 Installing SAS Contextual Extraction Studio

1.3.1 Before Installing

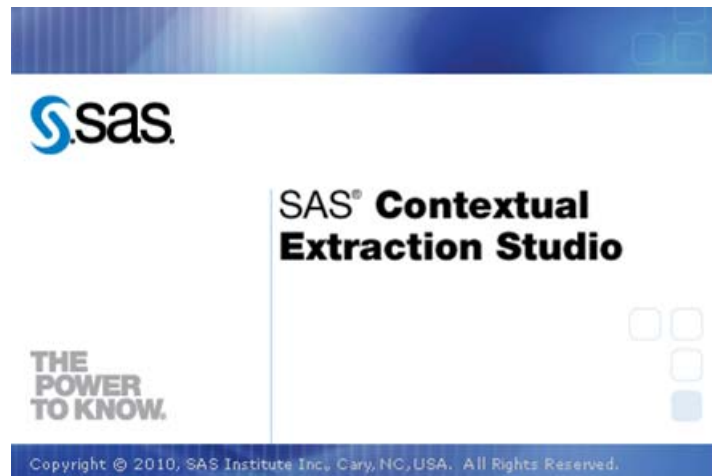
Install SAS Contextual Extraction Studio after you install SAS Content Categorization Studio. Install SAS Content Categorization Studio, using the directions found in *SAS Content Categorization Studio: Installation Guide*.

Although SAS Content Categorization Studio requires a license key, SAS Contextual Extraction Studio does not. The installation kit for Windows (SAS_ContextualExt_Studio_Setup.exe) contains all of the components that are required.

1.3.2 Use the InstallShield Wizard

To install SAS Contextual Extraction Studio, complete these steps:

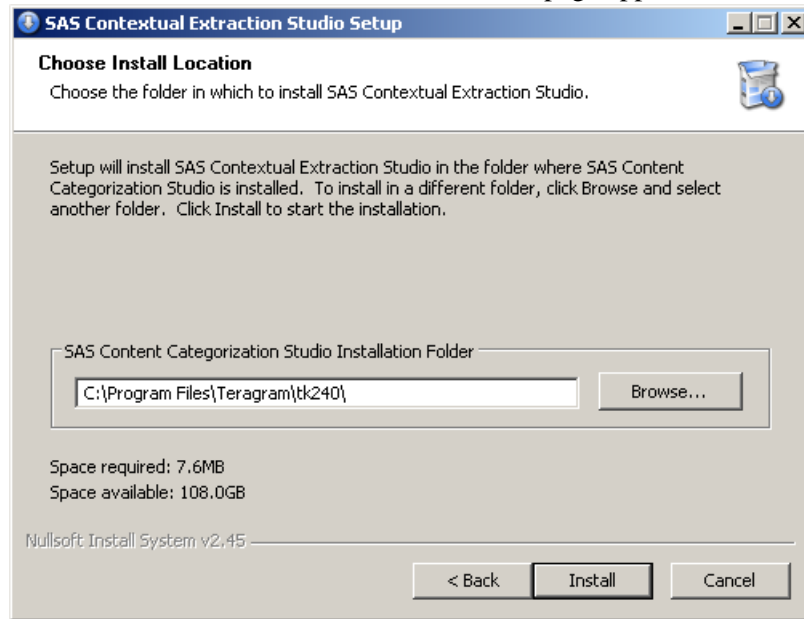
1. Double-click the SAS_ContextualExt_Studio_Setup.exe and the installation wizard appears.



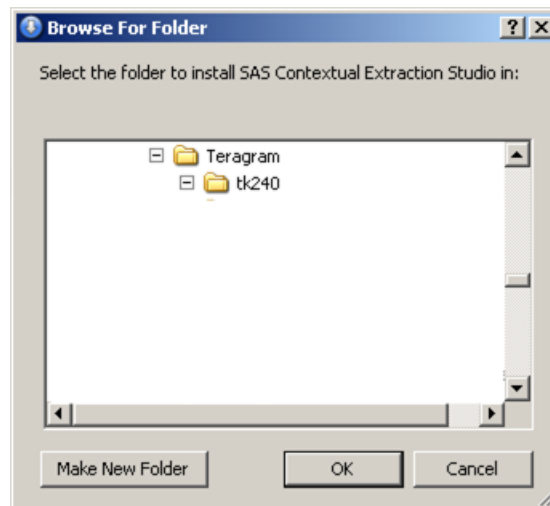
The Welcome to the SAS Contextual Extraction Studio Setup Wizard page appears.



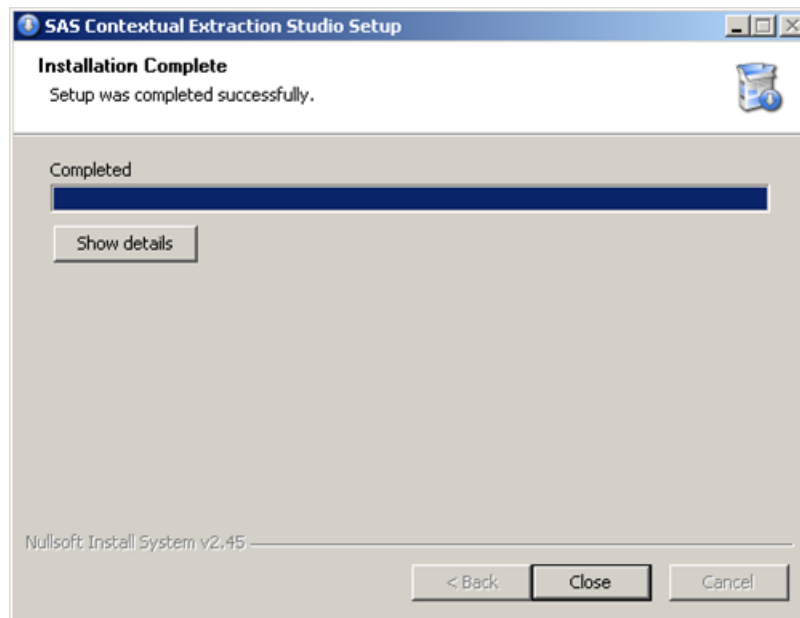
2. Click **Next** and the Choose Install Location page appears.



3. (Optional) Click **Browse** and the Browse For Folder dialog box appears.



-
- a. (Optional) Select a different installation folder.
 - b. (Optional) Click **Make New Folder**.
 - c. Click **OK**.
 4. (Optional) Compare **Space required** with **Space available** in the Choose Install Location page to ensure that there is enough room on your hard drive for the application.
 5. Click **Install** and the Installation Complete page appears.



6. (Optional) Click **Show details** to see the list of extracted files.
7. Click **Close** and begin working in this program.

1.4 Uninstall on Windows

To uninstall the SAS Contextual Extraction Studio software on a Microsoft Windows system go to **Start --> Programs --> SAS Content Categorization Studio --> Uninstall SAS Contextual Extraction Studio.**

Recommended Reading

The following books are recommended as companion guides:

- *SAS Contextual Extraction Studio: User's Guide*: Write multiple rules to define a single concept definition in SAS Contextual Extraction Studio. Develop these rules in the context of a SAS Content Categorization Studio project.
- *SAS Content Categorization Studio: User's Guide*: Create a SAS Content Categorization Studio project, test, and upload to SAS Content Categorization Server.
- *SAS Content Categorization Studio: Installation Guide*: Install SAS Content Categorization Studio.
- *SAS Content Categorization Studio: Quick Start Guide*: Advanced users can learn how to expeditiously set up a SAS Content Categorization Studio project.
- *SAS Content Categorization Collaborative Server: Administrator's Guide*: Configure the server for multiple subject matter experts. Grant permissions to these users and upload projects to the server.
- *SAS Content Categorization Collaborative Server: User's Guide*: Enable multiple subject matter experts to work together on one SAS Content Categorization Studio project.
- Use the language books for each language purchased to see the comprehensive list of part-of-speech tags that are available.
- SAS offers instructor-led training and self-paced e-learning courses to help you get started with the SAS add-in, learn how the SAS add-in works with the other products in the SAS Enterprise Intelligence Platform, and learn how to run stored processes in the SAS add-in. For more information about the courses available, see support.sas.com/training.

For a complete list of SAS publications, see the current SAS Publishing Catalog. To order the most current publications or to receive a free copy of the catalog, contact a SAS representative at

SAS Publishing Sales
SAS Campus Drive
Cary, NC 27513
Telephone: (800) 727-3228*
Fax: (919) 677-8166
E-mail: sasbook@sas.com
Web address: support.sas.com/pubs

* For other SAS Institute business, call (919) 677-8000.

Customers outside the United States should contact their local SAS office.

Index

C

CPU2

I

install
 steps3
installation kit
 contents3

R

RAM2

S

SAS_ContextualExt_Studio_Setup.exe
 run3
supported operating system2
system configuration
 specified2

W

Windows
 uninstall7

