



THE  
POWER  
TO KNOW.

# SAS<sup>®</sup> Content Categorization Studio 12.1 Installation Guide



The correct bibliographic citation for this manual is as follows: SAS Institute Inc. 2012.  
*SAS® Content Categorization Studio 12.1: Installation Guide*. Cary, NC: SAS Institute Inc.

## **SAS® Content Categorization Studio 12.1: Installation Guide**

Copyright © 2012, SAS Institute Inc., Cary, NC, USA

All rights reserved. Produced in the United States of America.

**For a hard-copy book:** No part of this publication may be reproduced, stored in a retrieval system, or transmitted, in any form or by any means, electronic, mechanical, photocopying, or otherwise, without the prior written permission of the publisher, SAS Institute Inc.

**For a Web download or e-book:** Your use of this publication shall be governed by the terms established by the vendor at the time you acquire this publication.

The scanning, uploading, and distribution of this book via the Internet or any other means without the permission of the publisher is illegal and punishable by law. Please purchase only authorized electronic editions and do not participate in or encourage electronic piracy of copyrighted materials. Your support of others' rights is appreciated.

**U.S. Government Restricted Rights Notice:** Use, duplication, or disclosure of this software and related documentation by the U.S. government is subject to the Agreement with SAS Institute and the restrictions set forth in FAR 52.227-19, Commercial Computer Software-Restricted Rights (June 1987).

SAS Institute Inc., SAS Campus Drive, Cary, North Carolina 27513.

1st electronic book, August 2012

SAS® Publishing provides a complete selection of books and electronic products to help customers use SAS software to its fullest potential. For more information about our e-books, e-learning products, CDs, and hard-copy books, visit the SAS Publishing Web site at [support.sas.com/publishing](http://support.sas.com/publishing) or call 1-800-727-3228.

SAS® and all other SAS Institute Inc. product or service names are registered trademarks or trademarks of SAS Institute Inc. in the USA and other countries. ® indicates USA registration.

Other brand and product names are registered trademarks or trademarks of their respective companies.

---

# Contents

---

- Installing SAS Content Categorization Studio ..... 3**
  - 1.1 About This Book .....3
    - 1.1.1 Audience .....3
    - 1.1.2 Conventions .....3
    - 1.1.3 Documentation Overview .....4
  - 1.2 Introduction to SAS Content Categorization Studio .....7
    - 1.2.1 What Is SAS Content Categorization Studio? .....7
    - 1.2.2 System Requirements .....7
  - 1.3 Installing SAS Content Categorization Studio .....8
    - 1.3.1 Use the Installation Wizard .....8
    - 1.3.2 Install a Second Language .....15
    - 1.3.3 Specify the Path to the SAS License .....17
  - 1.4 Uninstall on Windows .....19
  
- Recommended Reading ..... 21**
  
- Index ..... 23**



---

# Installing SAS Content Categorization Studio

---

## 1.1 About This Book

### 1.1.1 Audience

*SAS Content Categorization Studio: Installation Guide* is designed for users and administrators who install this software. This manual applies to both SAS Content Categorization Studio and the enterprise version of SAS Content Categorization Studio.

### 1.1.2 Conventions

This manual uses the following typographical conventions:

Convention	Description
<b>Next</b> button	The labels for user interface controls are shown in a bold, sans-serif font.
<code>C:\\Program Files\\Teragram\\tk240</code>	The rule examples are shown in a fixed-width font.
<u><a href="http://www.sas.com">www.sas.com</a></u>	The hypertext links are shown in a light blue, fixed-width font, and are underlined.

---

### 1.1.3 Documentation Overview

Use the following table to choose the documentation that you require based on the products that you purchased and the tasks required:

Documentation	12.1 Product	Tasks and 5.2 Product References
<i>SAS Content Categorization Studio: Installation Guide</i>	SAS Content Categorization Studio	Install the single user or the enterprise version of SAS Content Categorization Studio that you purchased. The enterprise version automatically installs support for collaborative features and LITI concepts.
	the enterprise version of SAS Content Categorization Studio	
<i>SAS Content Categorization Studio: User's Guide</i>	SAS Content Categorization Studio	Create a SAS Content Categorization Studio project, test, and upload the project to SAS Enterprise Content Categorization Server.  This guide is written for a single user and is a companion book for <i>SAS Enterprise Content Categorization Studio: User's Guide</i> .
<i>SAS Enterprise Content Categorization Studio: Administrator's Guide</i>	the enterprise version of SAS Content Categorization Studio with collaborative operations.	Configure your server for collaborative operations. (In the 5.2 release, this book was <i>SAS Content Categorization Collaborative Server: Administrator's Guide</i> .)

Documentation	12.1 Product	Tasks and 5.2 Product References
<i>SAS Enterprise Content Categorization Studio: User's Guide</i>	the enterprise version of SAS Content Categorization Studio with collaborative operations and LITI concepts capabilities.	See the cell above and use this guide to understand how collaborative operations work. Use the second part of this guide to write LITI rules and to upload these rules to SAS Enterprise Content Categorization Server. (In the 5.2 release, LITI rules were explained in <i>SAS Contextual Extraction Studio: User's Guide</i> .)
<i>SAS Enterprise Content Categorization Servers: Administrator's Guide</i>	<p>Download any, or all, of the following:</p> <ul style="list-style-type: none"> <li>- SAS Content Categorization Server</li> <li>- SAS Content Categorization Collaborative Server</li> <li>- SAS Content Categorization Java API</li> <li>- SAS Content Categorization Python API</li> <li>- SAS Document Conversion Server and Java API</li> </ul>	<p>Install, configure, and use SAS Enterprise Content Categorization Server, SAS Content Categorization Collaborative Server, and SAS Document Conversion Server. You can also upload .li files using this product.</p> <p>In the 5.2 release, the information in this book was found in the following manuals:</p> <ul style="list-style-type: none"> <li>- <i>SAS Content Categorization Server: Administrator's Guide</i></li> <li>- <i>SAS Content Categorization Collaborative Server: Administrator's Guide</i></li> <li>- <i>SAS Document Conversion: Developer's Guide</i></li> </ul>

Documentation	12.1 Product	Tasks and 5.2 Product References
<p><i>SAS Content Categorization Single User Servers: Administrator's Guide</i></p>	<p>Download any, or all, of the following:</p> <ul style="list-style-type: none"> <li>- SAS Content Categorization Server</li> <li>- SAS Content Categorization Java API</li> <li>- SAS Content Categorization Python API</li> <li>- SAS Document Conversion Server and Java API</li> </ul>	<p>Install, configure, and use SAS Enterprise Content Categorization Server and SAS Document Conversion Server</p> <p>In the 5.2 release, the information in this book was found in the following manuals:</p> <ul style="list-style-type: none"> <li>- <i>SAS Content Categorization Server: Administrator's Guide</i></li> <li>- <i>SAS Document Conversion: Developer's Guide.</i></li> </ul>



---

## 1.2 Introduction to SAS Content Categorization Studio

### 1.2.1 What Is SAS Content Categorization Studio?

SAS Content Categorization Studio is an application that enables you to define a taxonomy of categories and concepts. These categories and concepts classify documents and extract information from the input texts. For more information, see *SAS Content Categorization Studio: User's Guide*.

In this manual, the screenshots display SAS Content Categorization Studio operations. Some differences might apply to the enterprise version of SAS Content Categorization Studio. The enterprise version of SAS Content Categorization Studio, also enables collaborative operations and loads LITI concepts.

### 1.2.2 System Requirements

Configure the local machine where you install SAS Content Categorization Studio according to the recommended system configuration:

#### CPU

x86 with 1 GHz or higher required

#### RAM

1 GB or higher is recommended for a single user. 2 GB or higher is recommended if you are running the enterprise version. However, the base number depends on the size of the project that you build

#### Supported operating systems

32-bit (x86) or 64-bit (x64)

---

## 1.3 Installing SAS Content Categorization Studio

### 1.3.1 Use the Installation Wizard

To install SAS Content Categorization Studio, complete these steps:

1. Double-click `SAS_ConCat_Studio_Setup.exe`  
(`SAS_ConCat_CntExt_Studio_Setup.exe` for the enterprise version)  
and the SAS Content Categorization Studio wizard launches.



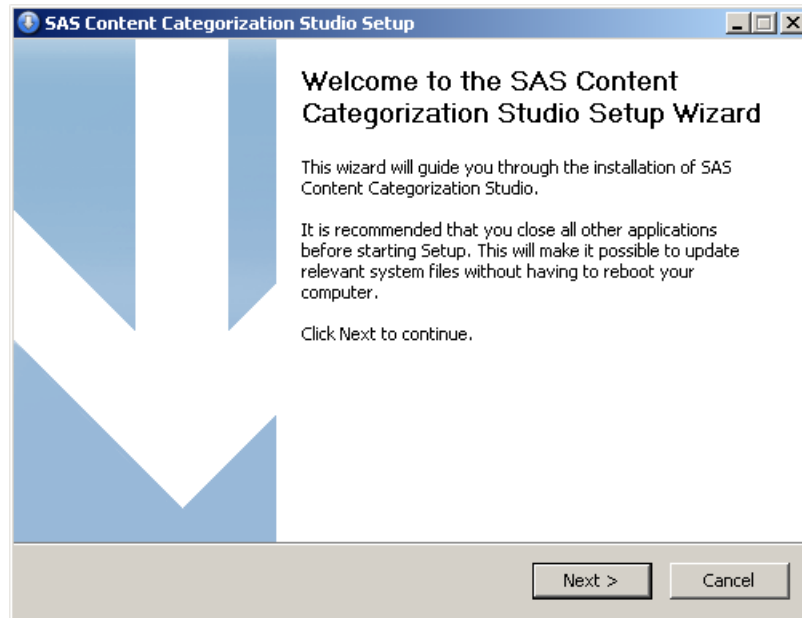
---

**Note:** If you are installing the enterprise version of SAS Content Categorization Studio, SAS Contextual Extraction Studio also appears in the title bar.

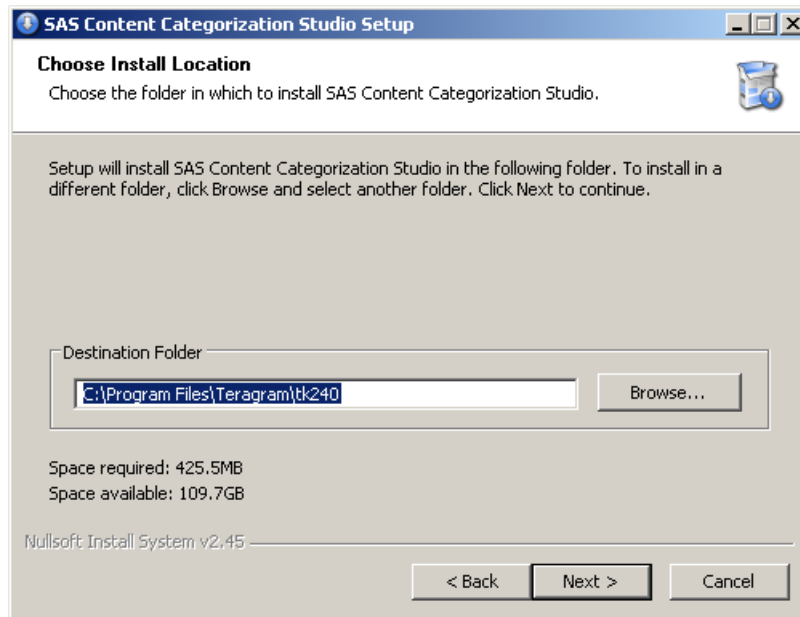
---

---

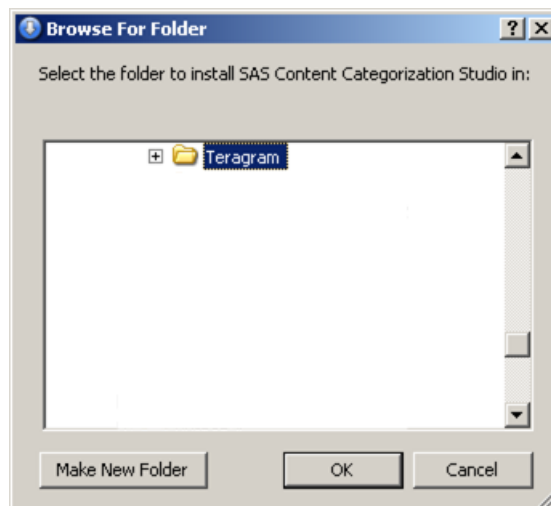
The Welcome to the SAS Content Categorization Studio Setup Wizard page appears.



2. Click **Next**. The Choose Install Location page appears.



3. (Optional) If the **Destination Folder** is not the desired location, click **Browse**. The Browse for Folder window appears.



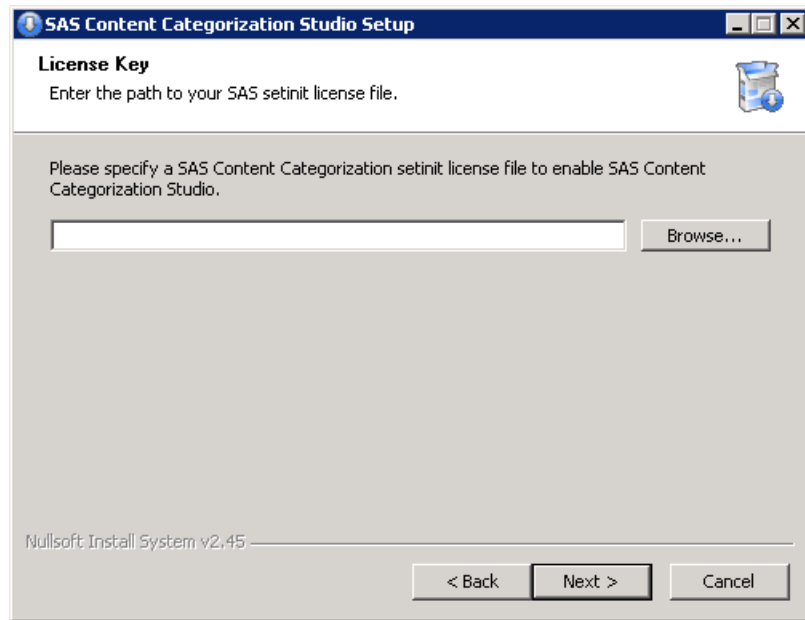
- 
- a. Select a different installation folder.
  - b. Click **Make New Folder** and name the new installation folder.
  - c. Click **OK**.
4. (Optional) Check the **Space required** number against the **Space available** number to ensure that there is enough space on your hard drive to install SAS Content Categorization Studio.

---

**Note:** **Space required** is different if you install the enterprise version of SAS Content Categorization Studio. For this product, **Space required** is 2.0 GB.

---

5. (Optional) Enter the path to the setinit file that is required to run SAS Content Categorization Studio into the **Please specify a SAS Content Categorization Studio setinit license to enable SAS Content Categorization Studio** field.



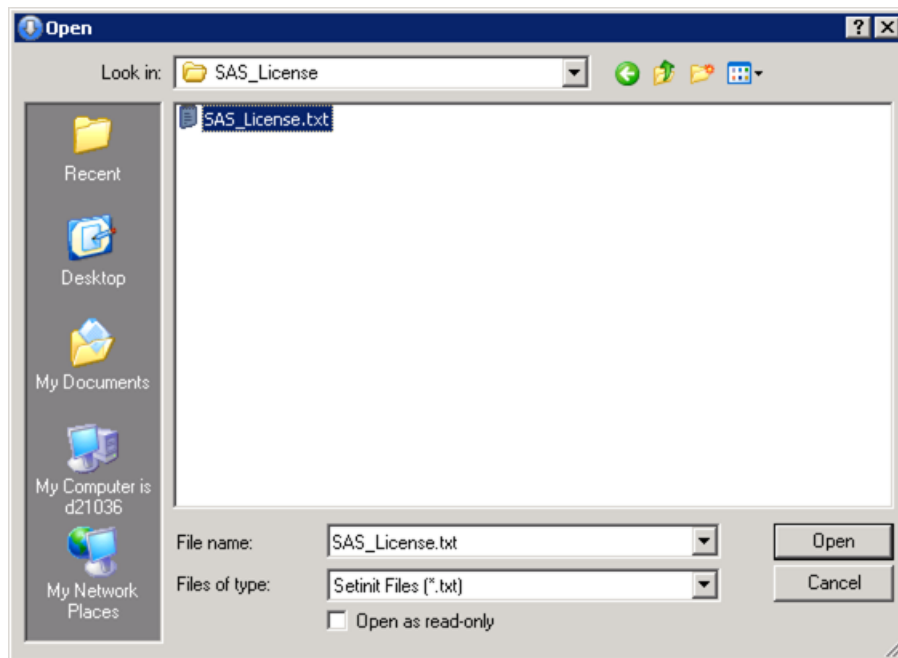
---

**Notes:** If you are installing the enterprise version, SAS Enterprise Content Categorization Server is specified. If you do not have your license key at the time of installation, see Section 1.3.3 *Specify the Path to the SAS License* on page 17.

---

To obtain your license key, see Section 1.3.3 *Specify the Path to the SAS License* on page 17.

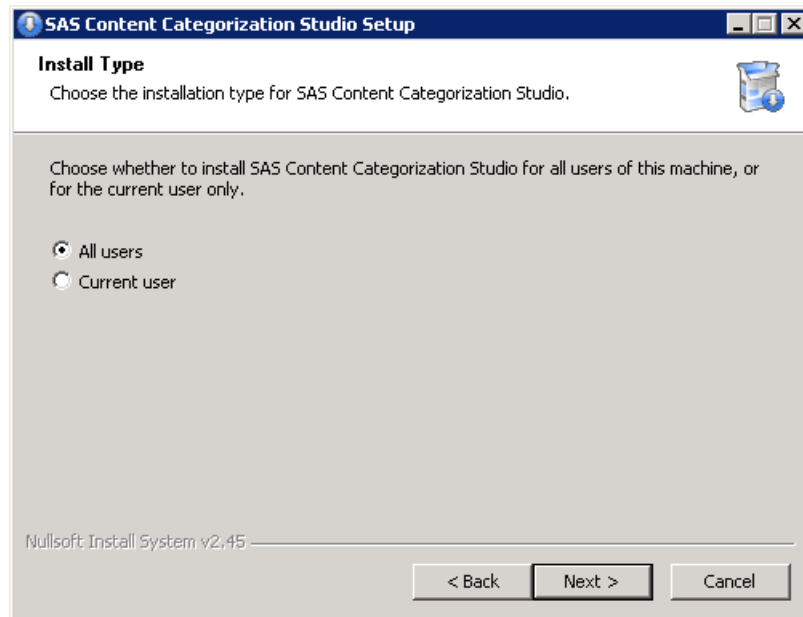
6. (Optional) Click **Browse** and the Open window appears where you can select the license file.



7. By default, `.txt` is the file type. Navigate to the SAS license file and select this file.
8. Click **Open** to close the Open window.
9. Click **Next** and the SAS Content Categorization Server Ports page appears.

---

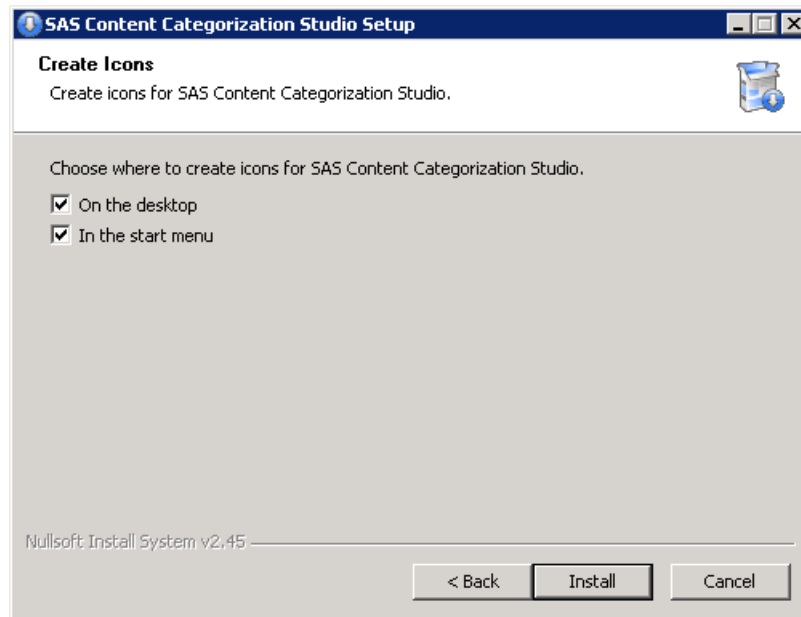
10. Click **Next** and the Install Type page appears.



11. Leave the default setting **All users** unless you want to restrict access to the person performing the Installation operation on this machine.

---

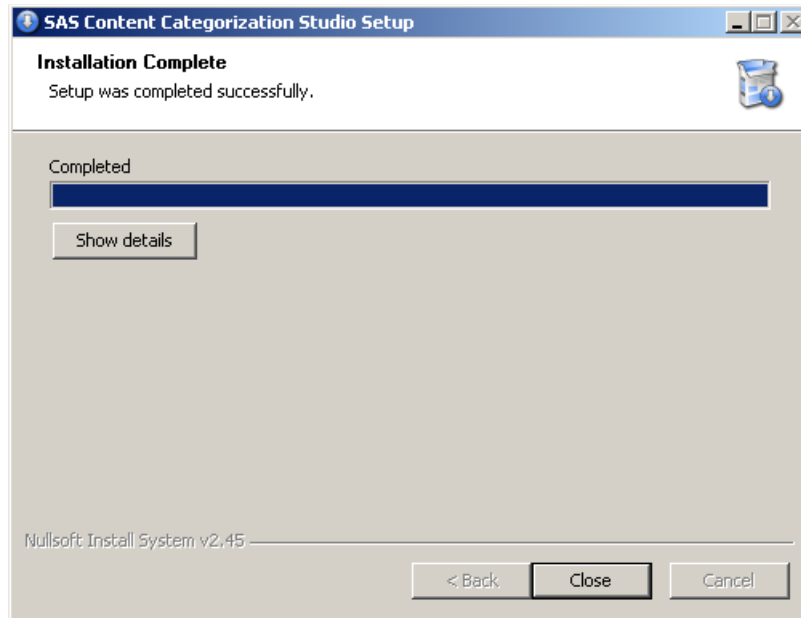
12. Click **Next**. The Create Icons page appears.



13. Select the shortcuts that appear on the desktop and start menu:
- a. (Default) Deselect **On the desktop** if you do not want an icon created here.
  - b. (Default) Deselect **In the start menu** if you do not want icons created in this menu.



- 
14. Click **Install**. The Installing page appears and changes to the Installation Complete page.



15. (Optional) To see a list of the extracted files, click **Show details**.
16. Click **Close**. You do not need to reboot your machine.
17. (Optional) If you want to install another language, see Section 1.3.2 *Install a Second Language* below.

### 1.3.2 Install a Second Language

A single SAS Content Categorization Studio project can be built using two or more languages. SAS Content Categorization Studio includes English UTF-8 and Latin-1 encodings. You can license additional language packs for other languages. (For languages that have both UTF-8 and Latin-1 encodings, like English and Western European languages, both encodings are included in each language pack. All other languages include only UTF-8 encoding.)

---

Before you can install a second language, install SAS Content Categorization Studio. For more information, see Section 1.3.1 *Use the Installation Wizard* on page 8.

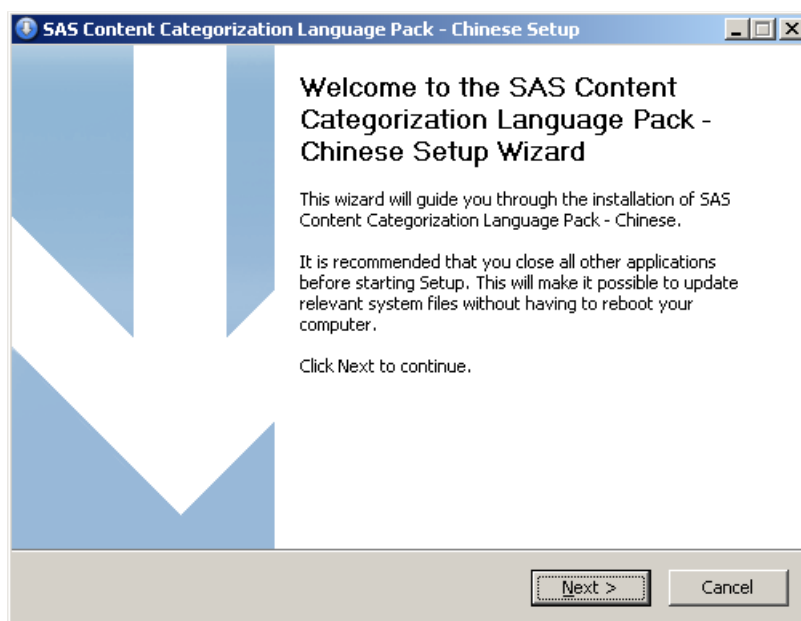
To install an additional language, complete these steps:

1. Double-click the language executable in the SAS Content Categorization Studio installation directory. For example, if you purchased the application in Chinese, click `SAS_ConCat_Chinese_Setup.exe`. The SAS Content Categorization Language Pack wizard launches.



---

The Welcome to the SAS Content Categorization Language Pack Setup Wizard appears.



2. Complete Step 2. on page 10 through Step 16. on page 15 for the additional language.

---

**Note:** Choose the same directory for the second language as you chose for the first installation.

---

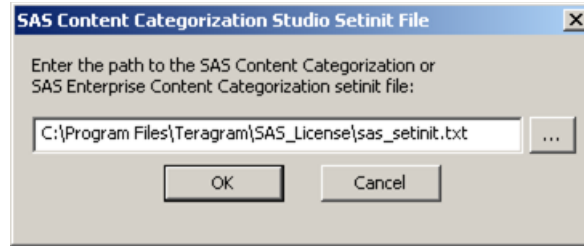
### 1.3.3 Specify the Path to the SAS License

If you did not specify the path to the SAS license during installation, use this section. This license is the SAS installation data file (SID file) that is included in the Software Order E-mail (SOE) that you received. Save this setinit file, to a directory on your hard drive that is easily accessible to SAS Content Categorization Studio.


---

To set the path to the SAS licensing file, complete these steps after you install SAS Content Categorization Studio:

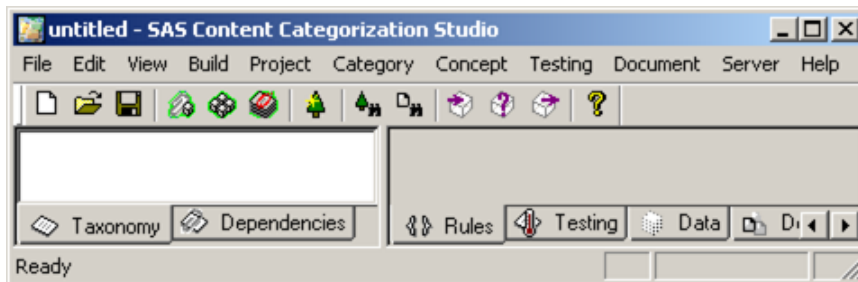
1. Select **Start --> Programs --> SAS Content Categorization Studio**. The SAS Content Categorization Studio Setinit File window appears.



2. Locate the `sas_setinit.sas` license file that you saved. Enter the path to the file into the field in this window.

(Optional) Click  and the Open window appears. Select the license file and click **Open**. For more information about the window that appears, see Step 3. on page 10.

3. Click **OK**. The untitled SAS Content Categorization Studio user interface appears. (After you create or open a project, this interface displays the name of the project.)



---

**Note:** After you upgrade, delete the old Teragram license file.

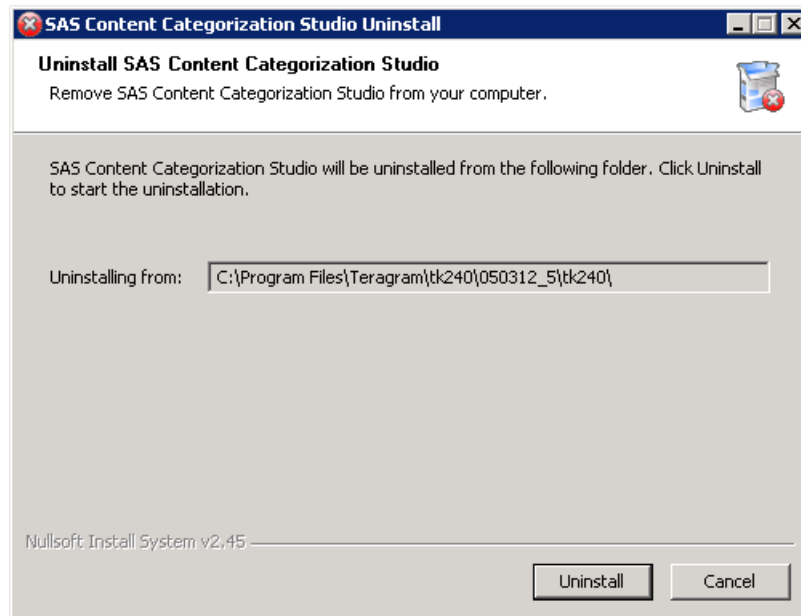
---

---

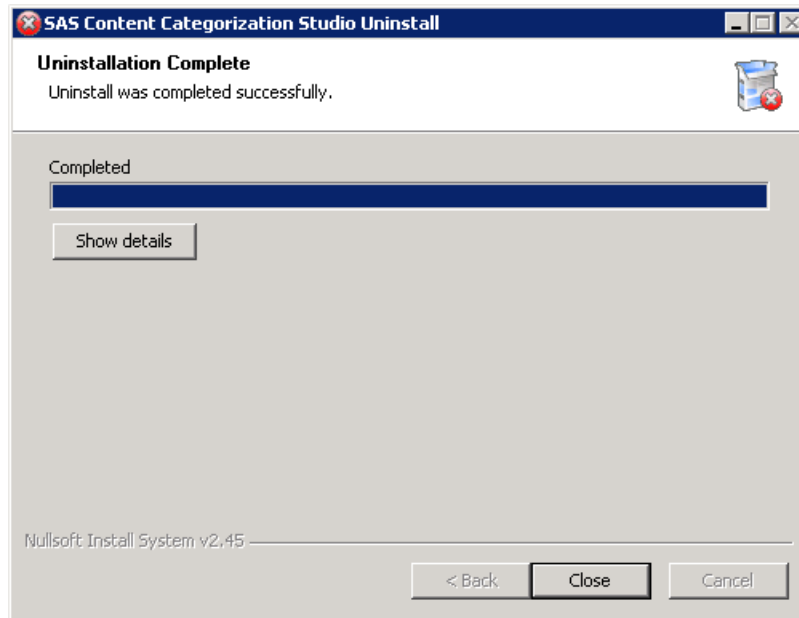
## 1.4 Uninstall on Windows

To uninstall the SAS Content Categorization Studio software on a Microsoft Windows system, complete these steps:

1. Close all running instances of SAS Content Categorization Studio.
2. Go to **Start --> Programs --> SAS Content Categorization Studio --> Uninstall SAS Content Categorization Studio**.



- 
3. Click **Uninstall** in the SAS Content Categorization Studio Uninstall window that appears.



4. (Optional) Click **Show details** to see the list of components that are uninstalled.
5. Click **Close**.

---

# Recommended Reading

---

The following books are recommended:

- *SAS Content Categorization Studio: User's Guide*: Create a SAS Content Categorization Studio project, test, and upload the output to SAS Content Categorization Server.
- *SAS Enterprise Content Categorization Studio: User's Guide*: Deploy the collaborative operations and develop complex LITI concepts and their rules for SAS Content Categorization Studio. Use this book after you read *SAS Content Categorization Studio: User's Guide*.
- *SAS Enterprise Content Categorization Studio: Administrator's Guide*: Install and configure the server used for the collaborative operations available in SAS Enterprise Content Categorization Studio.
- *SAS Enterprise Content Categorization Servers: Administrator's Guide*: Install, configure, and use SAS Content Categorization Server, SAS Content Categorization Collaborative Server, and SAS Document Conversion Server. Upload .1i files using this product.
- *SAS Content Categorization Single User Servers: Administrator's Guide*: Install, configure, and use SAS Content Categorization Server and SAS Document Conversion Server.

---

**Note:** The enterprise guides are only available with the enterprise versions of the products.

---

SAS offers instructor-led training and self-paced e-learning courses to help you get started with the SAS add-in, learn how the SAS add-in works with the other products in the SAS Enterprise Intelligence Platform, and learn how to run stored processes in the SAS add-in. For more information about the courses available, see [support.sas.com/training](http://support.sas.com/training).

For a complete list of SAS publications, see the current SAS Publishing Catalog. To order the most current publications or to receive a free copy of the catalog, contact a SAS representative at

---

SAS Publishing Sales  
SAS Campus Drive  
Cary, NC 27513  
Telephone: (800) 727-3228\*  
Fax: (919) 677-8166  
E-mail: [sasbook@sas.com](mailto:sasbook@sas.com)  
Web address: [support.sas.com/pubs](http://support.sas.com/pubs)

\* For other SAS Institute business, call (919) 677-8000.

Customers outside the United States should contact their local SAS office.



---

# Index

---

## A

additional language	
install .....	16
purchase .....	15

## C

CPU .....	7
-----------	---

## D

Destination Folder	
usage .....	10

## I

install	
begin process .....	8

## L

language pack	
installation wizard .....	17

## R

RAM .....	7
-----------	---

---

## S

SAS_ConCat_CntExt_Studio_Setup.exe	
usage .....	8
SAS_ConCat_Studio_Setup.exe	
usage .....	8
Show details	
usage .....	15
Space required	
Space available .....	11
supported operating system .....	8
system configuration	
specified .....	7

## W

Windows	
uninstall .....	19