

Installation Instructions for the SAS[®] System for Mac[™] OS for PowerPC[™], Release 6.12, TS040

Table of Contents

Chapter 1, Introduction	1
Preinstallation Checklist.....	1
System Requirements	2
Contacting SAS Institute	2
 Chapter 2, Before You Install the SAS System	 3
Installing a Web Browser	3
Installing Adobe Acrobat Reader	5
 Chapter 3, Installing the SAS System.....	 7
Installing the SAS System on Your Hard Drive	7
Invoking the SAS System Install Application	7
Browsing the On-line Enclosures.....	9
Installing Your SAS Software Products	11
Installation Options	12
Performing an Easy Install	14
Performing a Custom Install for a Single Target.....	16
Performing a Custom Install for Multiple Targets.....	19
Running SAS/EIS and SAS Desktop Software From the CD-ROM (Minimum Installation).....	27
Notes About the Installation Process.....	29
Licensing the SAS System	29
Removing SAS Software Products.....	30
Exiting the Installation Procedure	31
Invoking the SAS System.....	32
 Appendix A, Accessing and Using the HTML-Based Help and Documentation.....	 33
Notes About Cyberdog	33
 Appendix B, Installing the SAS/ ACCESS Interface to ODBC.....	 35
 Appendix C, Post-Installation Setup for SAS/ ASSIST Software.....	 37
 Appendix D, Post-Installation Setup for SAS/CONNECT Software.....	 39
Storing and Locating SAS/CONNECT Script Files	39
System Configuration for the TCP Access Method	40
 Appendix E, Post-Installation Setup for SAS/SHARE Software.....	 41
System Configuration for the TCP Access Method	41
 Appendix F, Accessing SAS/ TUTOR Software	 43

Appendix G, The SITEINFO File	45
Appendix H, The SAS News File.....	47
Appendix I, Installing SAS Notes	49
Installation Media	49
Monthly SAS Notes Media	49
Overview of the Installation Procedure	49
The SAS Notes and Utilities	50
Using the SAS Programs.....	50
Accessing the SAS Notes	51
The SUPPORT Application	51
SAS Notes	52
Sample Library.....	53
Maintenance.....	54
Options.....	54
Appendix J, Accessing SAS Samples.....	55
Appendix K, Installing SAS Product Updates	57
Monthly SAS Notes Media	57
Installing SAS Product Updates into An Existing SAS System Location.....	57
Appendix L, Installing National Language Support	59
Installing a Translation.....	59
Government Notice	61

Chapter 1, Introduction{ TC "Chapter 1, Introduction" \1 1 }

This document provides instructions for installing Release 6.12 of the SAS System for Mac OS for PowerPC. Please read these instructions before you attempt to install any Release 6.12 SAS software product in the Mac OS PowerPC environment. This document describes the following tasks:

- ☐ installing a web browser
- ☐ viewing online documentation
- ☐ installing the SAS System
- ☐ completing the installation process
- ☐ licensing the SAS System
- ☐ removing SAS software products
- ☐ exiting the installation procedure
- ☐ invoking the SAS System.

Note: On-line versions of the installation instructions and enclosures (Alert Notes, System Requirements, and Release Notes) are available on your CD-ROM and can be viewed using the **Browse** button available from the *Install Application* window. See "Browsing the On-line Enclosures" in Chapter 3, "Installing the SAS System," for system requirements before you begin the install.

Preinstallation Checklist{ TC "Preinstallation Checklist" \1 2 }

Before you begin installing the SAS System, make sure you do the following:

- ☐ Review all the items in your product package.
- ☐ Check the available disk space to see if you have room to install all of your SAS software. To determine the amount of free disk space on your hard drive, click your hard drive icon and select **Get Info** from the **File** menu. Refer to the System Requirements sheet in your installation package for the list of disk space requirements. Disk space requirements are also verified by the SAS System Install application during installation.
- ☐ Select **About This Macintosh** from the **Apple** menu and confirm that your operating system is System 7.5.3 or greater.
- ☐ Disable any virus protection utility before invoking the Install application.

System Requirements{ TC "System Requirements" \1 2 }

Release 6.12 of the SAS System runs only on Mac OS PowerPCs and requires 18-24 MB of free contiguous memory. If you only want to run the installation program, *SAS System Install*, it requires a minimum of 2 MB of free contiguous memory. The SAS System must be run with Version 7.5.3 or greater of Mac OS system software.

Note: After products are installed or if a license is applied, the install attempts to invoke the SAS System which requires an additional 18-24 MB of contiguous memory. Refer to the *System Requirements* for more information.

Contacting SAS Institute{ TC "Contacting SAS Institute" \1 2 }

If you have difficulty with any of the installation procedures, contact the SAS Institute Technical Support Division at (919) 677-8008. Support is available Monday through Friday between 9:00 a.m. and 5:00 p.m., EST. If you are a non-U.S./Canadian customer, contact your SAS Representative for the SAS Institute office nearest you.

Chapter 2, Before You Install the SAS[®] System{ TC "Chapter 2, Before You Install the SAS[®] System" \1 1 }

To browse the on-line documentation as well as some of the on-line help, you need a web browser. The web browser is used to view the on-line documentation included in the SAS612:help folder on your CD-ROM. In addition, there are some new features of Release 6.12 of the SAS System that take advantage of web browsers. For more information, see Appendix A, "Accessing and Using the HTML-Based Help and Documentation."

Notes: A web browser is not required to execute the SAS System, but is necessary to view the on-line documentation and some of the help.

The products described in this chapter are not supported by SAS Institute. Contact the vendor for support issues.

Installing a Web Browser{ TC "Installing a Web Browser" \1 2 }

If a web browser is not currently installed on your system, you can install *Cyberdog* from your SAS CD-ROM. *Cyberdog* requires *OpenDoc* which is also included on the SAS CD-ROM.

The SAS System uses the public domain product *Internet Config* to determine your default web browser. If you do not have *Internet Config* installed on your system, complete the steps in "Installing Internet Config" below. A web browser must be installed on your system before you can install *Internet Config*.

To install Cyberdog and OpenDoc, complete the following steps.

Installing *OpenDoc* (1.1 MB):

1. Open the *OpenDoc* 1.1 folder.
2. Double-click the *Installer* application.
3. Follow the on-screen instructions using the *Easy Install*.
4. Restart your system from the *Special* pull-down menu.

Note: If you encounter any problems installing *OpenDoc 1.1*, refer to *About OpenDoc* in the SAS612-*nnnnnn*:OpenDoc 1.1 folder on your SAS System CD-ROM (where *nnnnnn* represents the 6-digit volume serial number on your CD-ROM). For further assistance, contact Apple Computer Technical Support.

Installing *Cyberdog* (5.2 MB):

1. Open the *Cyberdog 1.2 PPC Install* folder.
2. Double-click the *Install Cyberdog PPC* application.
3. Follow the on-screen instructions using the *Easy Install*.
4. Click to restart your system.

Note: If you encounter any problems installing Cyberdog, refer to *About Cyberdog* in the SAS612-nnnnnn:Cyberdog 1.2 PPC Install folder on your CD-ROM. For further assistance, contact Apple Computer Technical Support.

Installing *Internet Config* (.4 MB):

Note: To run the SAS System with *Internet Config*, install using the following steps:

1. Copy the *InternetConfig 1.3* folder to your local drive.
2. Open the local *InternetConfig 1.3* folder.
3. Double-click the *Internet Config* application.
4. Click **Install** to install extension. If this extension is already installed, a dialog appears asking you to update the extension.
5. Click **Helpers**.
6. Click **http - MacWeb** and then **Change**.
7. Click **Choose Helper...**
8. Currently there is a defect in *Cyberdog* that prevents it from being correctly launched from within SAS. If you are using a web browser other than *Cyberdog*, skip to Step 9. Otherwise, go to the *Finder* and copy the *Cyberdog Open Document Helper* from the *Cyberdog Fix* folder to the folder where *Cyberdog* was installed.
9. Use the dialog to select the *Cyberdog Open Document Helper* icon instead of the *Cyberdog Application* icon from the folder where *Cyberdog* was installed and then click **Open**. If you are using a web browser other than *Cyberdog*, use the dialog to select that web browser and then click **Open**.
10. Click **OK...** from the **Add Helper** dialog and then click **Add** from the **Helpers** dialog.
11. When the **Add Helper** dialog appears, enter **File** in the **Helper for:** field.
12. Select **Choose Helper...**

13. Use the dialog to select the *Cyberdog Open Document Helper* icon instead of the *Cyberdog Application* icon from the folder where *Cyberdog* was installed and then click *Open*. If you are using a web browser other than *Cyberdog*, use the dialog to select that web browser and then click *Open*.
14. Click *OK* from the *Add Helper* dialog.
15. Close the *Add Helper* dialog, quit *Internet Config*, and click to *Save* the preferences.

Note: If you encounter problems installing *Internet Config*, refer to *User Documentation.html* in the `SAS612-nnnnnn:Internet Config 1.3` folder on your SAS System CD-ROM (where `nnnnnn` represents the 6-digit volume serial number on your CD-ROM). A web browser must be installed before you can view this file. For further assistance, contact Apple Computer Technical Support.

Once you have a web browser available, you can view the on-line documentation and some of the help.

Installing Adobe Acrobat Reader{ TC "Installing Adobe Acrobat Reader" \12 }

Adobe Acrobat Reader must be installed before you can view the on-line enclosures. PDF-formatted versions of the following paper enclosures included in your customer package are in the `SAS612:doc` folder on your SAS System CD-ROM:

- ☐ *Alert Notes*
- ☐ *Installation Instructions for the SAS System for Mac OS for PowerPC, Release 6.12, TS040*
- ☐ *Release Notes*
- ☐ *System Requirements*

You can view these enclosures from the install via the `Browse` button in the *Install Application* window or outside of the install, using *Adobe Acrobat Reader* which is included on the SAS CD-ROM. To install the *Acrobat Reader*, complete the following steps:

Installing *Adobe Acrobat Reader (8.1 MB)*:

1. Double-click the *Install Acrobat Reader 3.0* application.
2. Click `Install`.
3. Click `Continue` and then `Restart` to restart your machine after installation is complete.

Note: If you encounter problems installing *Adobe Acrobat Reader 3.0*, contact Adobe Systems Inc. for assistance. See the license agreement displayed in *Install Acrobat Reader 3.0* for more information.

Chapter 3, Installing the SAS[®] System{ TC "Chapter 3, Installing the SAS[®] System" \1 1 }

You can interrupt the installation procedure during the copy process by pressing the `command-period` keys. Otherwise, to exit the installation procedure, press the `Exit` or `Cancel` button in the dialog windows. If you exit the installation procedure before all products are loaded, it is recommended that you delete all SAS folders and files and restart from the beginning.

Installing the SAS System on Your Hard Drive{ TC "Installing the SAS System on Your Hard Drive" \1 2 }

To install the SAS System on your Mac OS PowerPC hard drive, insert the SAS CD-ROM into your CD-ROM drive and follow the instructions in the remainder of this section.

Invoking the SAS System Install Application{ TC "Invoking the SAS System Install Application" \1 3 }

The *SAS System Install* application allows you to install all or a subset of the SAS software products licensed to your site.

To invoke the *SAS System Install* application, open the `SAS612-nnnnnnn` folder (where `nnnnnnn` represents the 6-digit volume serial number on your CD-ROM), and double-click the *SAS System Install* icon.



Figure 3.1: The SAS System Install icon

The splash screen that appears when the Install application is invoked is dismissed by selecting `Continue`, or pressing `Return`. The Install application then checks your system for the minimum requirements to run the SAS System, including the operating system version. If your system does not meet the minimum requirements, you are notified and forced to exit the install.

If your system meets all of the minimum requirements, the *Install Application* window is displayed as shown in Figure 3.2. This window describes the various actions that the SAS System Install application performs.

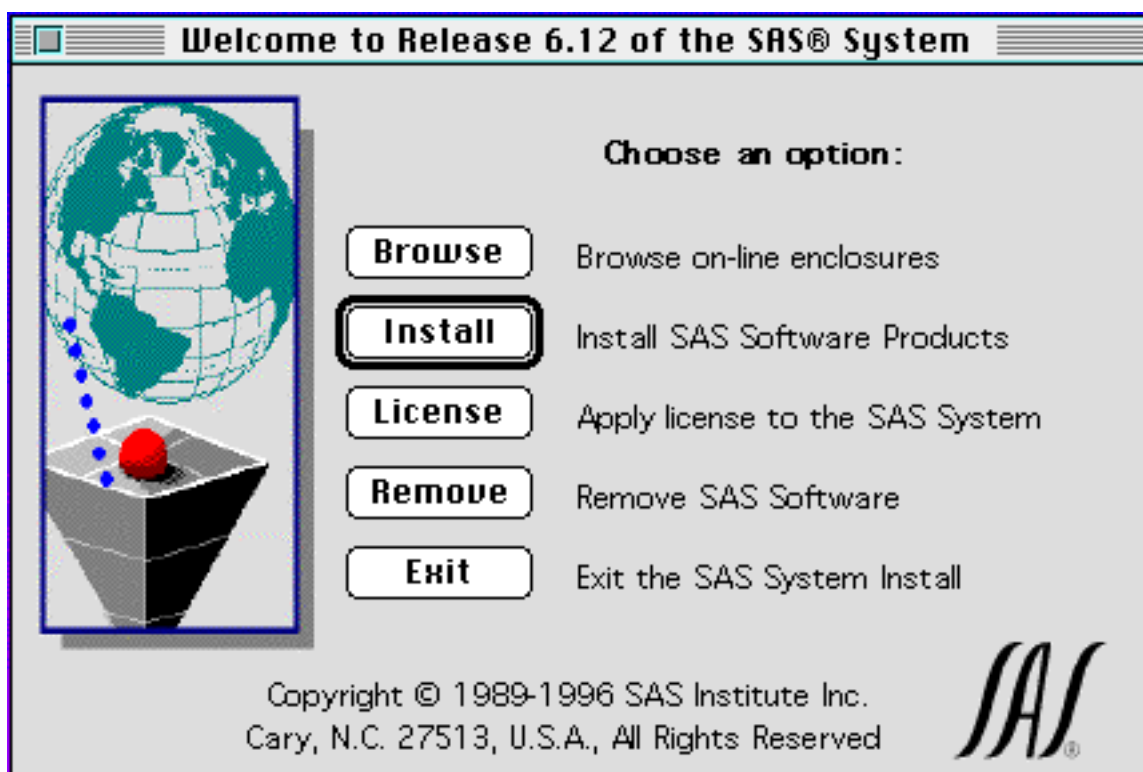
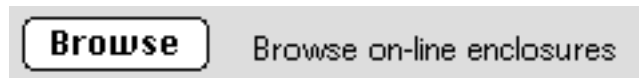


Figure 3.2: The Install Application Window

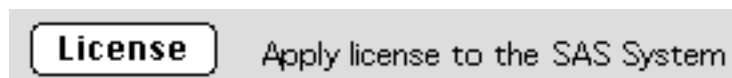
The following actions are available from this window:



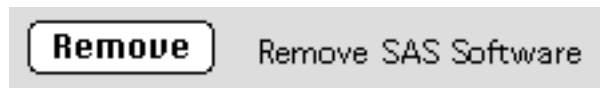
allows you to browse the enclosures on-line



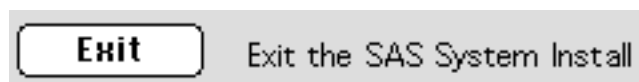
installs the SAS System product(s) onto your hard drive.



applies your license (or SETINIT) to the SAS System.



deletes any installed SAS System product(s) that are selected.



exits the SAS System Install application.

Browsing the On-line Enclosures{ TC "Browsing the On-line Enclosures" \13 }

Select the `Browse` button from the *Install Application* window to browse the enclosures on-line via the install. The enclosures that are included on your SAS CD-ROM are in PDF format and can be viewed with *Adobe Acrobat Reader*.

If you do not already have *Adobe Acrobat Reader 3.0* installed on your system, refer to "Installing Adobe Acrobat Reader" in Chapter 2, "Before You Install the SAS System."

Note: If you select the `Browse` button and you do not have *Adobe Acrobat Reader* installed, the install notifies you that *Adobe Acrobat Reader* could not be launched from the install.

When you select the **Browse** button, a window similar to the one in Figure 3.2a is displayed:

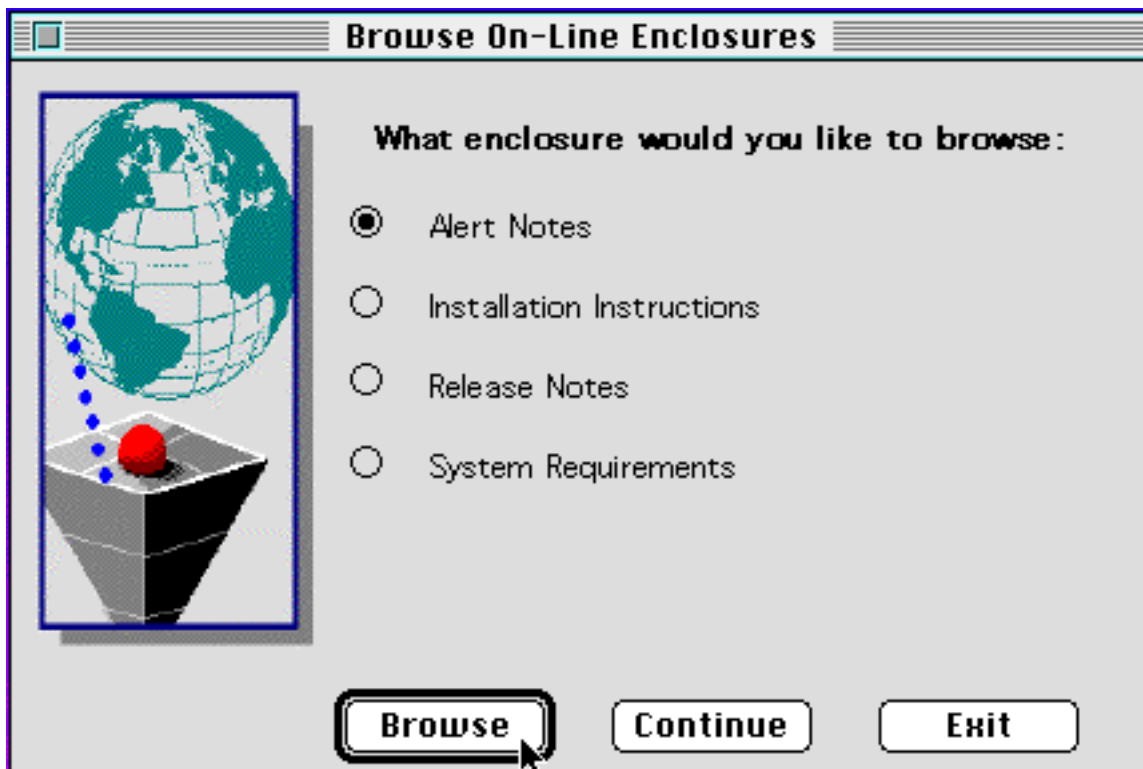


Figure 3.2a Browse On-line Enclosures Window

By default, the first enclosure is selected. After you select the radio button for the enclosure that you want to browse, click the **Browse** button. This launches *Adobe Acrobat Reader* so you can browse the document. After you are finished browsing the document, you can do either of the following from within Adobe Acrobat:

- ☐ Select **Quit** from the **File** pull-down menu and you are returned to the install's *Browse On-Line Enclosures* window.

or

- ☐ Select **Close** from the **File** pull-down menu, and then select any of the other documents in `SAS612-nnnnnn:SAS612:doc`. When you are finished browsing the documents, select **Quit** from the **File** pull-down menu and you are returned to the install's *Browse On-Line Enclosures* window.

After you have browsed the enclosures, select **Continue** to return to the main menu, or **Exit** to exit the installation procedure.

Installing Your SAS Software Products{ TC "Installing Your SAS Software Products" \13 }

Click the **Install** button from the *Install Application* window to install SAS software products on your system. If the Install application cannot find where to install the SAS System from, the *Installation Source Location* dialog as shown in Figure 3.3 is displayed:



Figure 3.3: The Installation Source Location Dialog

The source drive for the installation files can be a shared network hard drive, a local hard drive, or a CD-ROM drive. When installing from a shared network hard drive, the connection to the hard drive should already be established, and the hard drive icon should be on the desktop before beginning the installation.

Notes: Make sure you do not have shared network hard drives on your desktop with duplicate names when installing to or from shared network hard drives.

Once the *SAS System Install* application is invoked, you can only connect to another network node if the *Install Application* window, the *Easy Install* window, or either of the *Custom Install* windows are displayed.

If you are installing from a network disk instead of the SAS CD-ROM, the source SAS612 folder must be a copy of the original installation source folder. The *SAS System Install* application cannot use a SAS612 folder that already contains an installed copy of the SAS System.

Complete the following steps from the *Installation Source Location* window:

1. Click the **Desktop** button.
2. From the list box, highlight the drive that contains the installation files and then click **Open**.
3. Highlight the **SAS612** folder and click the **Select** button.

Installation Options{ TC "Installation Options" \13 }

When you have specified the source location of the SAS System, the *Install Options* window is displayed as shown in Figure 3.4:

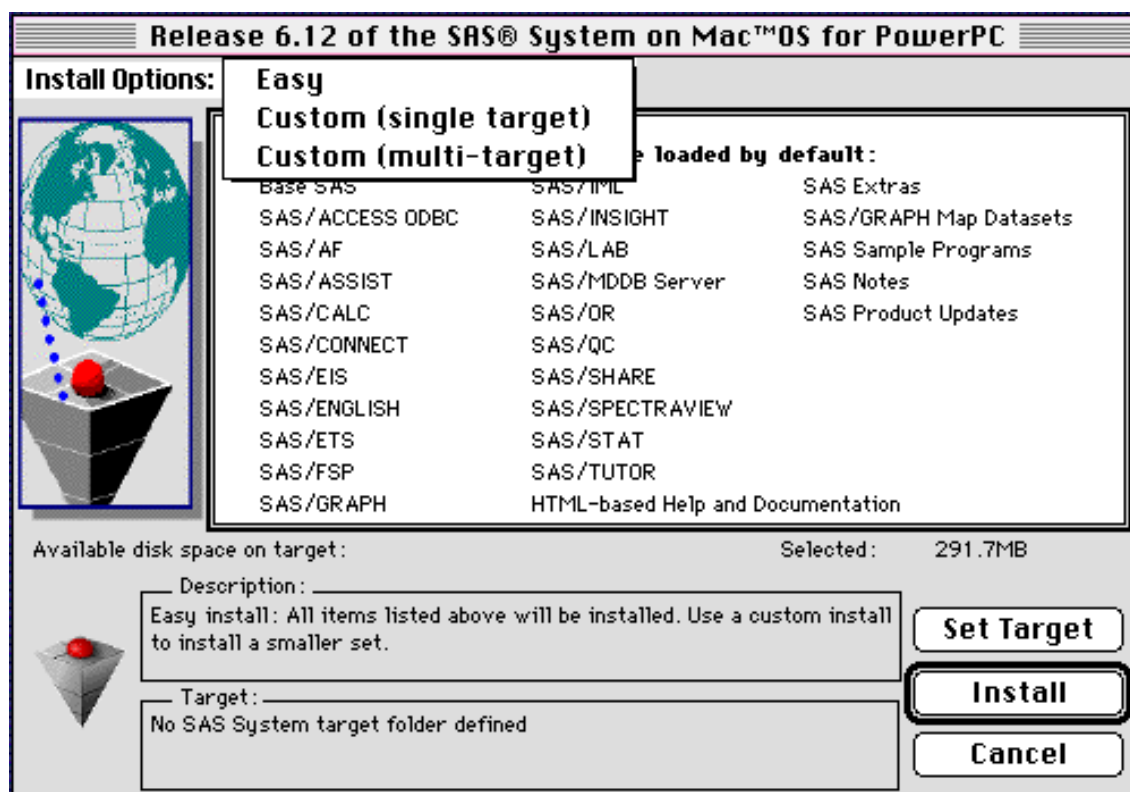


Figure 3.4: Install Options Window

From this window you can choose from the following options:

- ☐ *Easy*
installs all of the products in the `SAS612` folder on your hard drive. This is the default.
- ☐ *Custom (Single Target)*
allows you to select which products to install on your Mac OS PowerPC.
- ☐ *Custom (Multiple Target)*
allows you to select products to install in up to five separate locations to conserve local disk space.

The installation procedure checks for the following in the specified SAS target location:

- ☐ single quotes and double quotes

single quotes and double quotes are NOT allowed in the SAS target location path name. If they are found, you have the option of selecting a different SAS target location, or exiting from the install.
- ☐ an existing history file from a previous install

If found, you are notified and have the option of installing over the existing SAS System (to install add-on products), or specifying a different SAS target location.
- ☐ files found in the SAS target location

The install is unable to determine if a previous install was done, but warns you that files were found. You have the option of installing over this area, or specifying a different SAS target location.
- ☐ duplicate network drive names

Specify a volume name that is unique for your target location. If the target is not unique from other shared network servers connected to your machine, the install will generate an error. For example, if you are connected to two shared network servers that have the same name, "Network Server," the install will generate an error when you try to install to one of these servers.

Performing an Easy Install{ TC "Performing an Easy Install" \14 }

To perform an Easy Install, complete the following steps:

Note: Easy is selected in the Install Options pop-up menu selection list by default.

1. Click the Set Target button.
2. Highlight the folder where you want to install the SAS System (the *target* folder) and click the Select button.

or

Click the New button to create the folder where you want to install the SAS System (the *target* folder). When the new folder is created, highlight it and click the Select button.

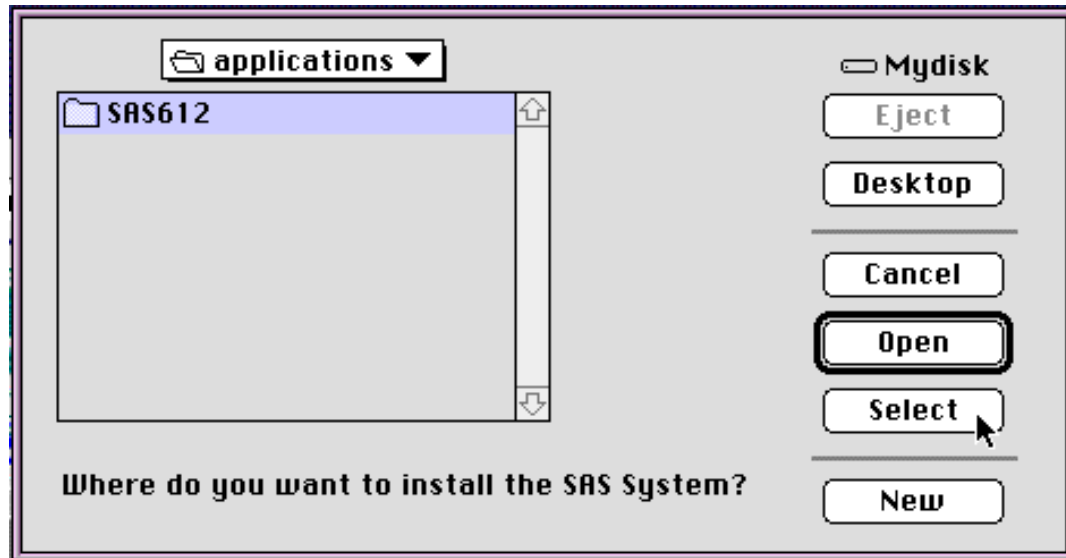


Figure 3.5: Setting the Target Location for the SAS System

The target folder is now displayed in the Target : box.

3. Click the **Install** button to begin installing the SAS System.

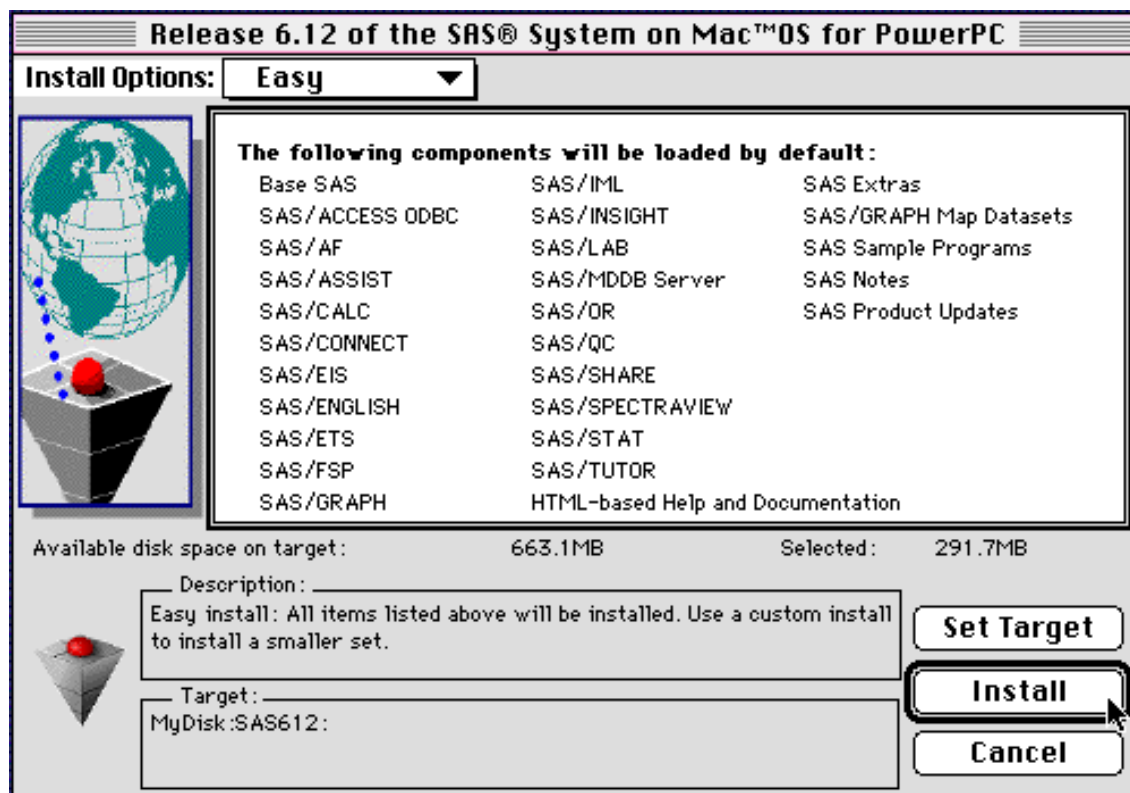


Figure 3.6: Easy Install Window

After the install has completed, see the section, "Completing the Installation Process" to determine if the install was successful.

Performing a Custom Install for a Single Target{ TC "Performing a Custom Install for a Single Target" \14 }

Performing a Custom Install to a Single Target allows you to select the components that you want to install based on your needs and preferences. For example, if you have a limited amount of disk space on your hard drive, you may want to install only those products that you will use.

To perform a Custom Install for a single target, complete the following steps:

1. Select Custom (Single Target) from the Install Options pop-up menu selection list.
2. De-select the products you do not want to install by clicking the check box beside the product name, or you can de-select all products by clicking on the box next to SAS612, and then select only the products you want to install.

Note: You can click anywhere on a product name to display a description of the product in the Description: box at the bottom of the window.

To display additional selections for a product, click the triangle to the left of the product name.

3. Click the Set Target button.
4. Highlight the folder where you want to install the SAS System (the *target* folder) and click the Select button.

or

Click the New button to create the folder where you want to install the SAS System (the *target* folder). When the new folder is created, highlight it and click the Select button.

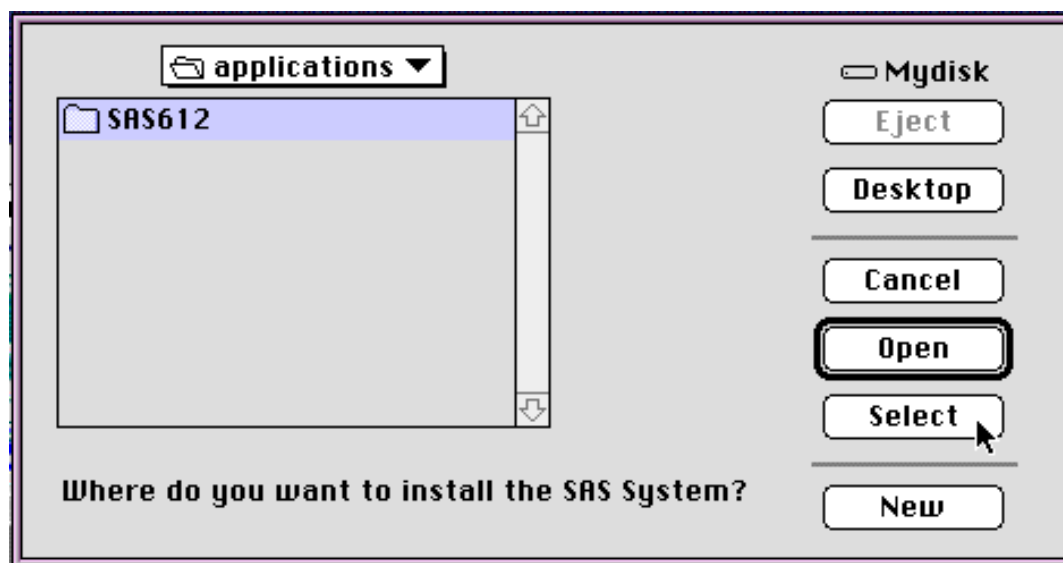


Figure 3.7: Setting the Target Location for the SAS System

The target folder is now displayed in the **Target :** box.

5. Click the **Install** button as shown in Figure 3.8:

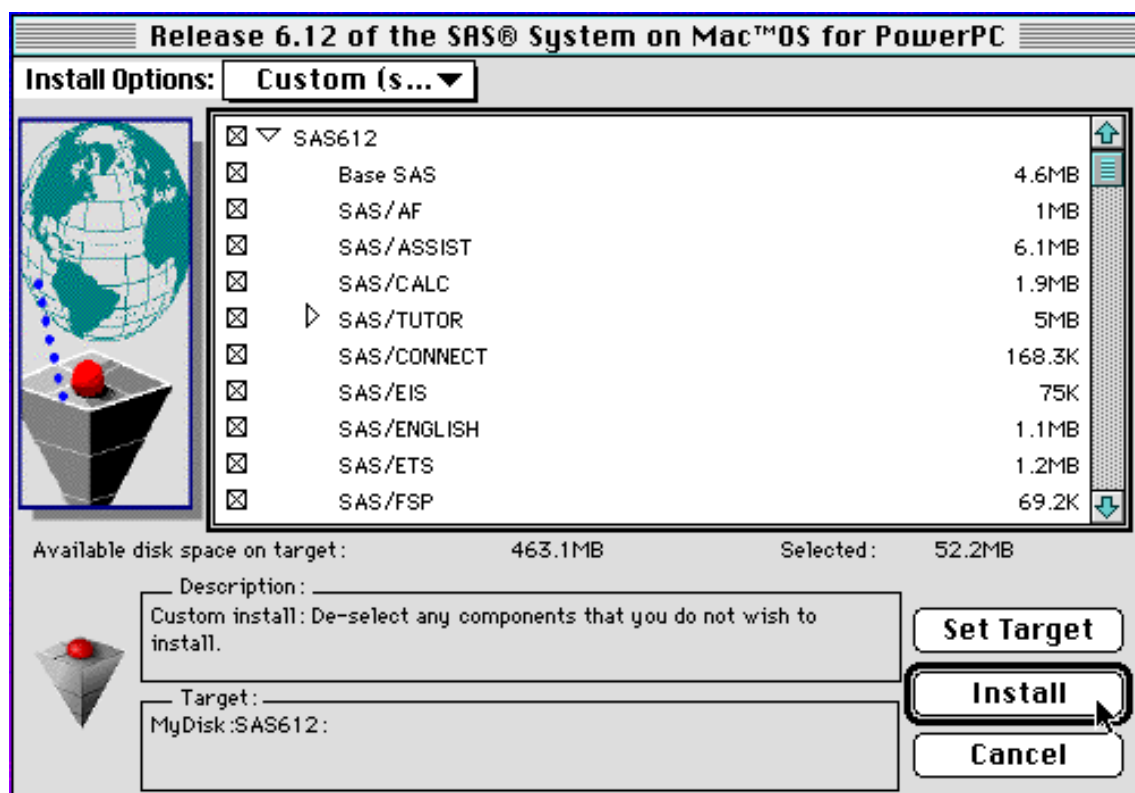


Figure 3.8: Custom Install Window for a Single Target

6. Verify your selections using the `Verify Your Selection` dialog shown in Figure 3.9. Click the `OK` button if the products shown are correct. Click the `Cancel` button to modify your selections.

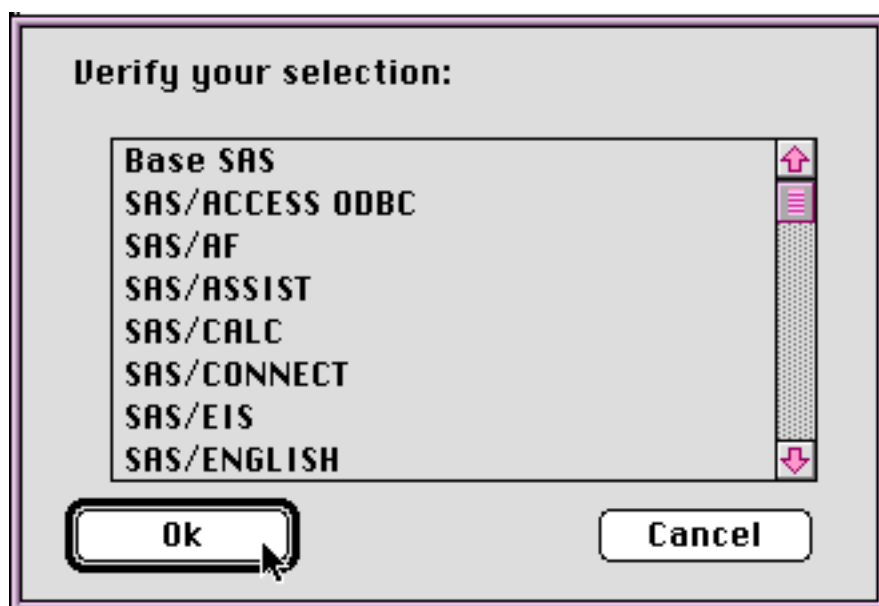


Figure 3.9: Verify Your Selection Dialog

After the install has completed, see the section, "Completing the Installation Process," to determine if the install was successful.

Performing a Custom Install for Multiple Targets{ TC "Performing a Custom Install for Multiple Targets" \14 }

Performing a custom install for multiple targets allows you to install SAS System products and components in separate locations and link them together to function as one system. You can install SAS System components in up to five locations and chain them together using *SASPath* links. In addition, you can create a link back to the SAS CD-ROM or network install area.

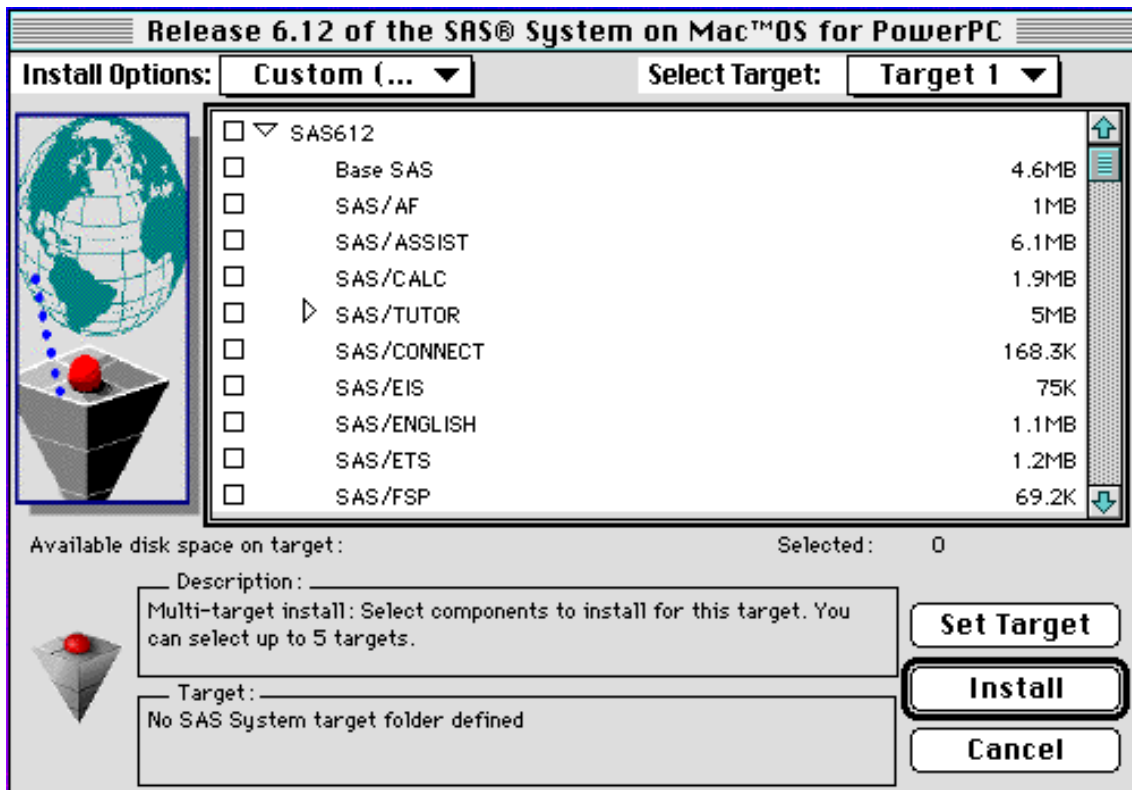


Figure 3.10: Custom Install Window for Multiple Targets

To perform a Custom Install for multiple targets, complete the following steps:

1. Select Custom (Multi-Target) from the Install Options pop-up menu selection list.
2. Select the products you want to install for *Target 1* by clicking the check box beside the product name.

Note: You can click anywhere on a product name to display a description of the product in the **Description:** box at the bottom of the window.

To display additional selections for a product, click the triangle to the left of the product name.

3. Click the `Set Target` button to specify the Target 1 location.
4. Highlight the folder where you want to install the SAS System (the *target* folder) and click the `Select` button.

or

Click the `New` button to create the folder where you want to install the SAS System (the *target* folder). When the new folder is created, highlight it and click the `Select` button.

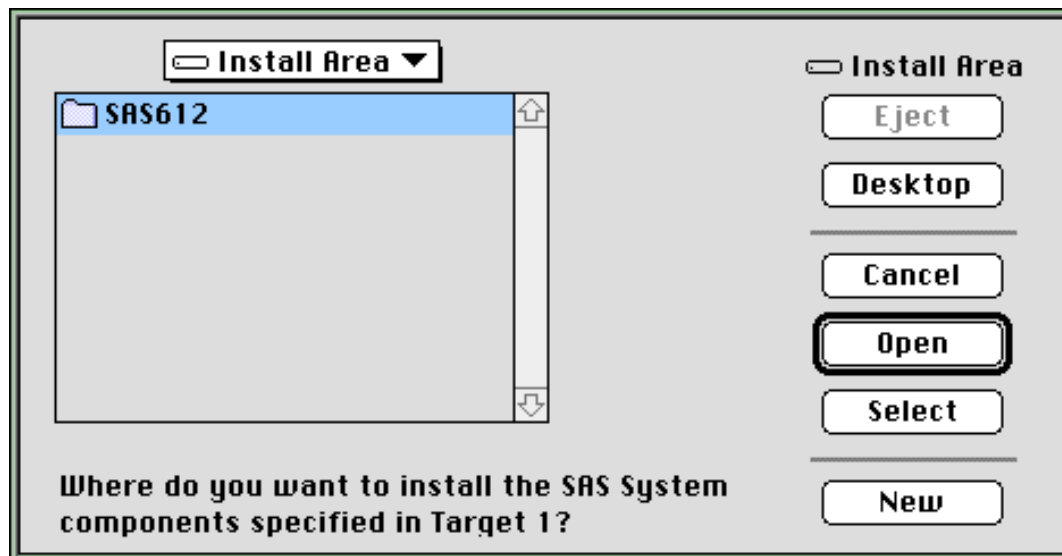


Figure 3.10a

5. Choose `Target 2` from the `Select Target` pop-up menu selection list.
6. Select the products you want to install for *Target 2* by clicking the check box beside the product name.
7. Click the `Set Target` button to specify the Target 2 location.

8. Highlight the folder where you want to install the SAS System and click the `Select` button.

or

Click the `New` button to create the folder where you want to install the SAS System. When the new folder is created, highlight it and click the `Select` button.

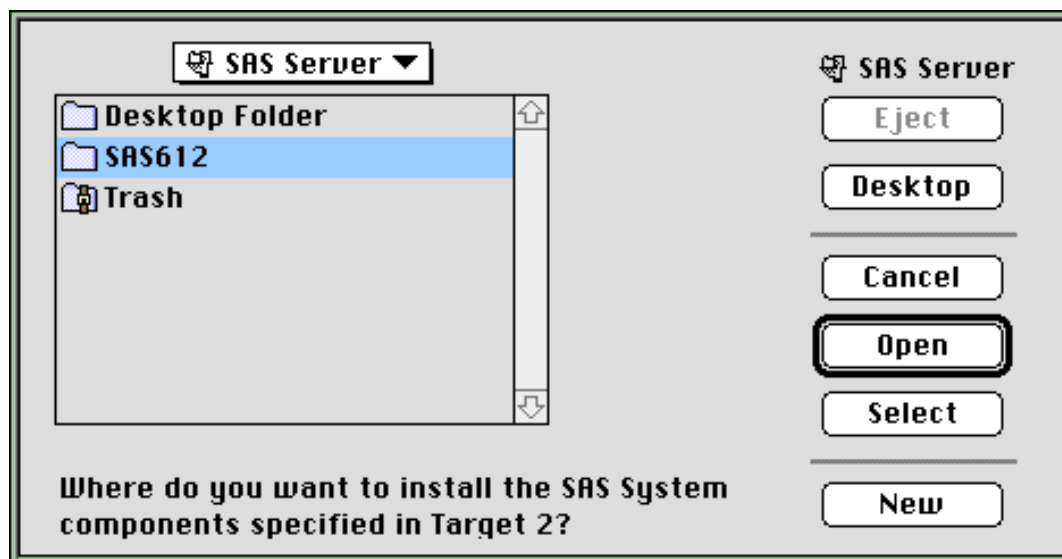


Figure 3.10b

9. Perform Steps 5-8 for additional target locations.
10. Click the `Install` button.
11. Verify your selections using the `Verify Your Selection` dialog. Click the `OK` button if the products shown are correct. Click the `Cancel` button to modify your selections.

You now have the option of creating a SASPath alias to link the targets back to the installation media:

- ☐ If you select **Yes**, a SASPath alias is created in Target 1 and Target 2. After the installation is complete, clicking on the **SAS** application icon in Target 1 causes SAS to first search Target 1, then Target 2, and then the installation media for files it needs to execute.
- ☐ If you select **No**, a SASPath alias is not created. You can still run the products you installed in Targets 1 and 2, however you will not have access to other licensed products on your SAS CD-ROM.

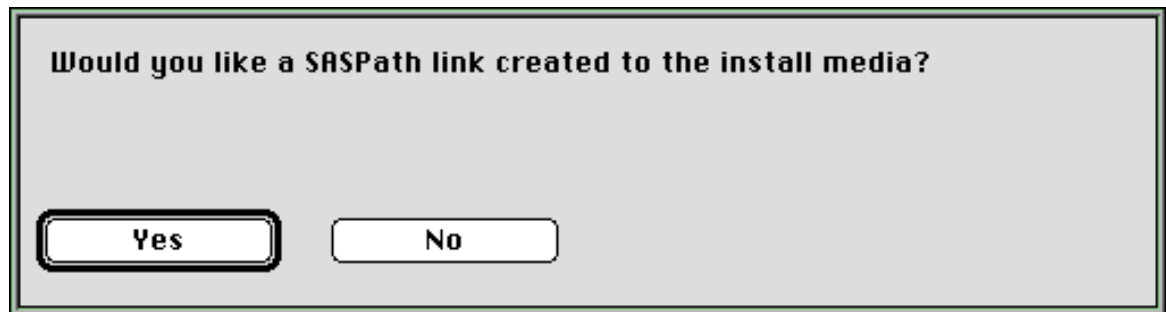


Figure 3.10c

Multiple Target Installation Example

As an example installation scenario, assume you only have 80MB of disk space available on your local hard drive, and you want to:

- ☐ install Base SAS software locally.
- ☐ install SAS/GRAPH software on a server.
- ☐ access other products without installing them.

For this example, complete the following steps.

1. Select Custom (Multi-Target) and then select Base SAS as shown in Figure 3.10d:

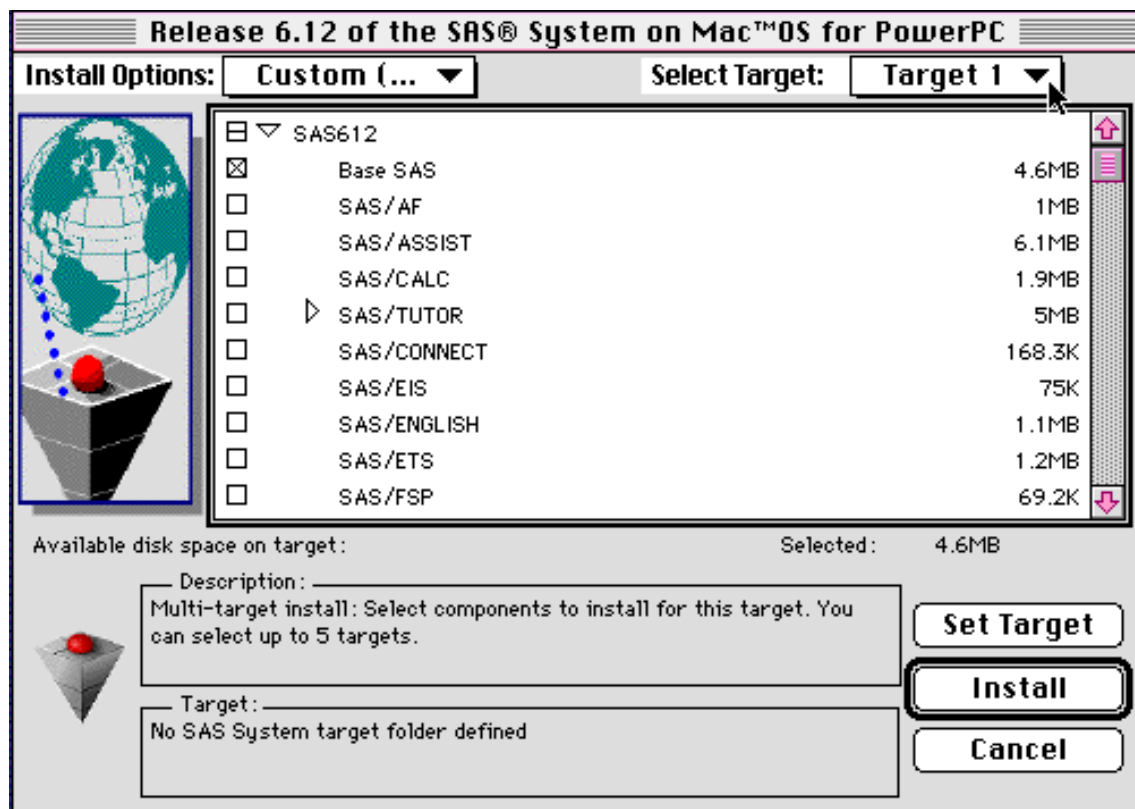


Figure 3.10d

2. Use the *Select Target* menu to select Target 2. Before you can select components for Target 2 you are prompted to specify the target location for Target 1 as shown in Figure 3.10b:

Note: If you choose Target 2 from the menu before you specify a location for Target 1, you will automatically be prompted for the Target 1 location.

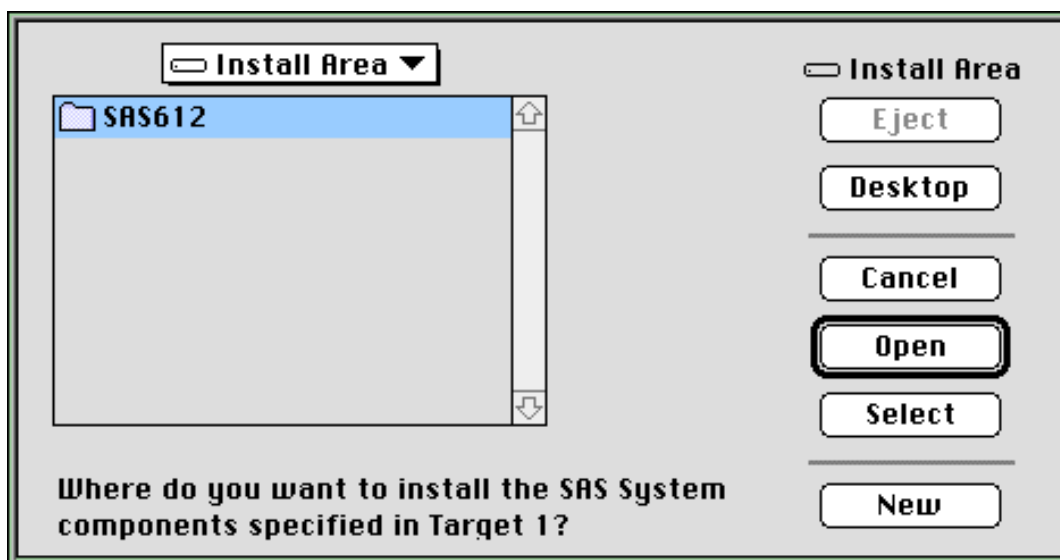


Figure 3.10e

3. After using the dialog to select the Target 1 location, select **SAS/GRAPH** and click **Install** as shown in Figure 3.10f:

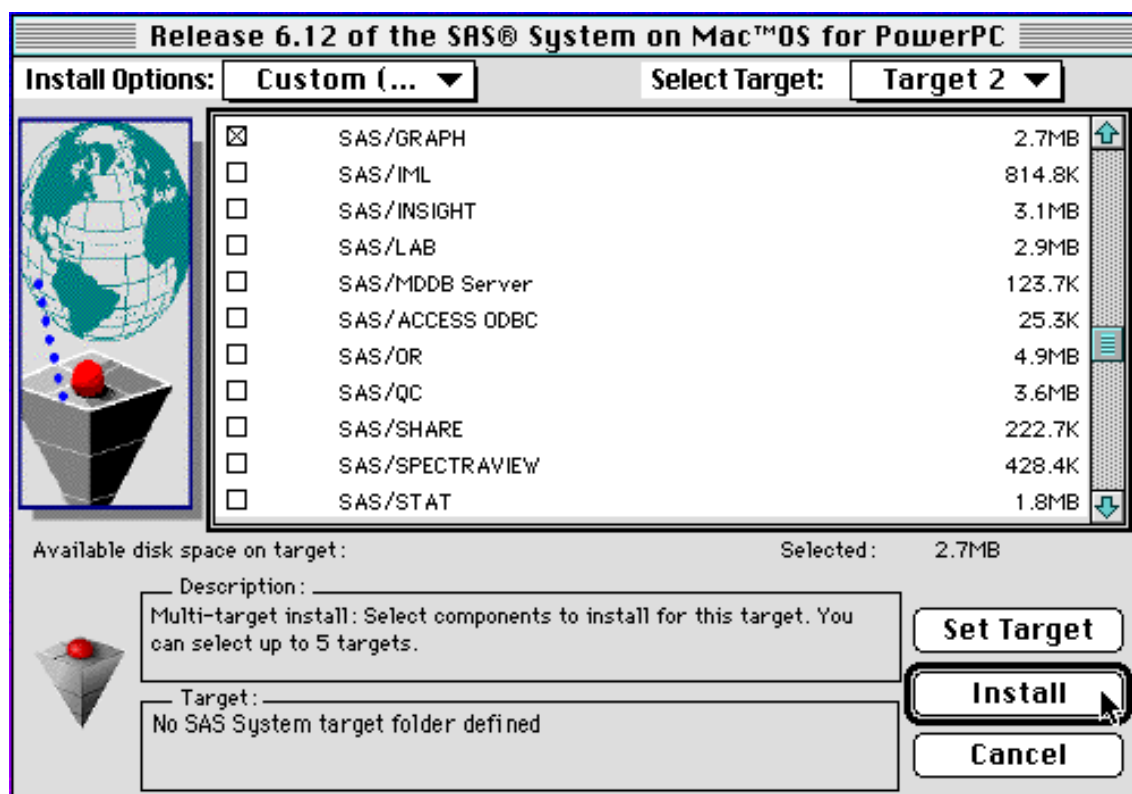


Figure 3.10f

4. Select the location to install SAS/GRAPH software on the server as shown below:

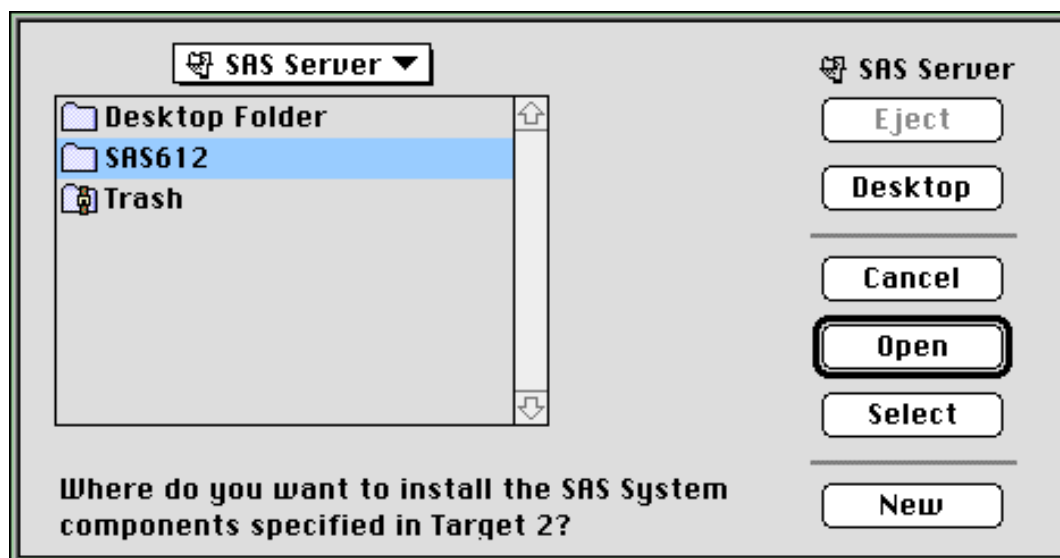


Figure 3.10g

5. Click **OK** to verify your selections as shown in Figure 3.10h:

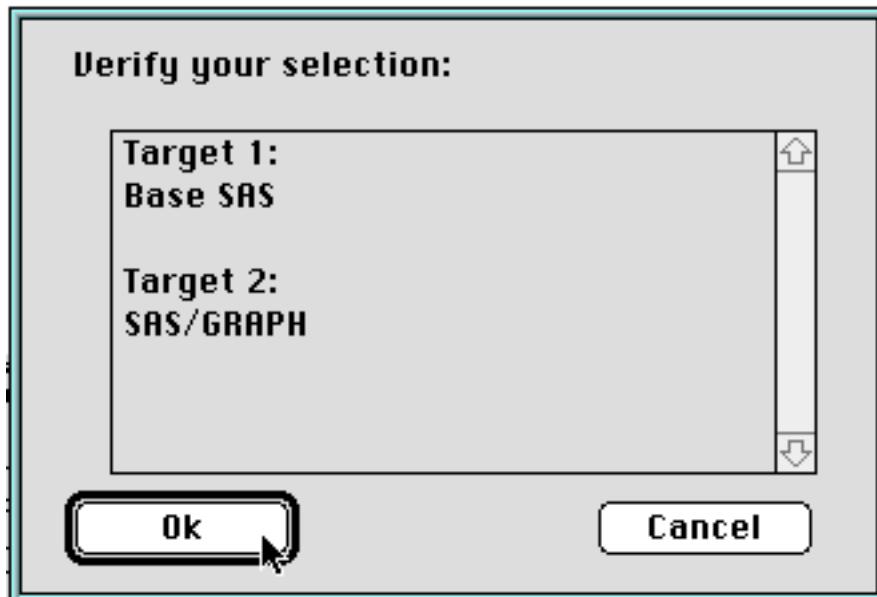


Figure 3.10h

You now have the option of creating a SASPath alias to link the targets back to the installation media:

- ☐ Select **Yes** and a SASPath alias is created in Target 1 and Target 2. After the installation is complete, clicking the **SAS** application icon in Target 1 causes SAS to first search Target 1, then Target 2, and then the installation media for the files it needs to execute.

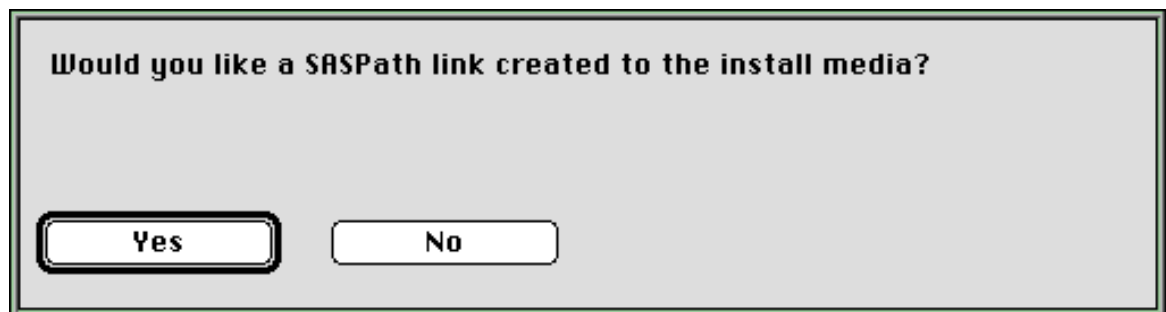


Figure 3.10i

Running SAS/EIS and SAS Desktop Software From the CD-ROM (Minimum Installation){ TC "Running SAS/EIS and SAS Desktop Software From the CD-ROM (Minimum Installation)" \14 }

SAS/EIS and SAS Desktop software require some data sets that are not created until after an installation has occurred. These data sets are customized per site and must be created locally.

Note: A minimum installation uses approximately 2.7MB of disk space.

To run SAS/EIS and SAS Desktop software from CD-ROM, complete the following steps:

1. Select Custom (Multi-Target) from the Install Options pop-up menu selection list as shown in Figure 3.10g. Do not select any products for installation.

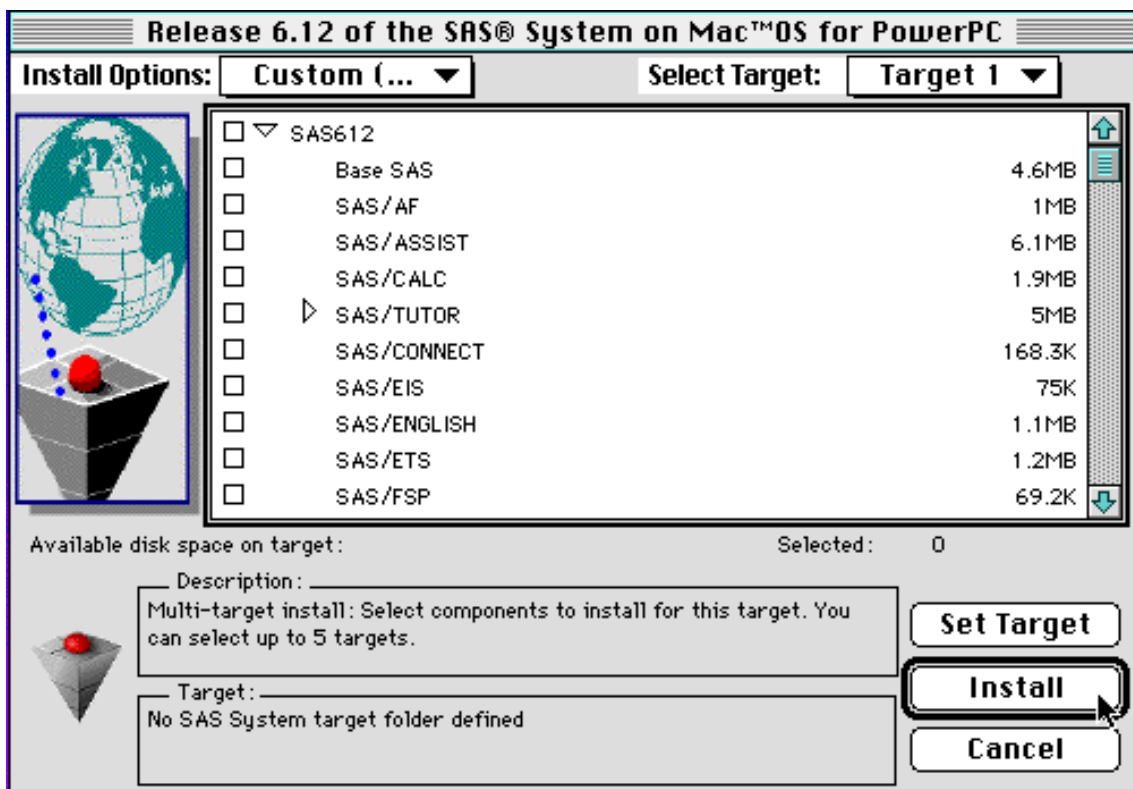


Figure 3.10j

2. Click the **Install** button to begin installing SAS data sets that are needed to run SAS/EIS and SAS Desktop software.

3. Highlight the folder where you want to install the minimal SAS System and click the **Select** button.

or

Click the **New** button to create the folder where you want to install the minimal SAS System. When the new folder is created, highlight it and click the **Select** button.

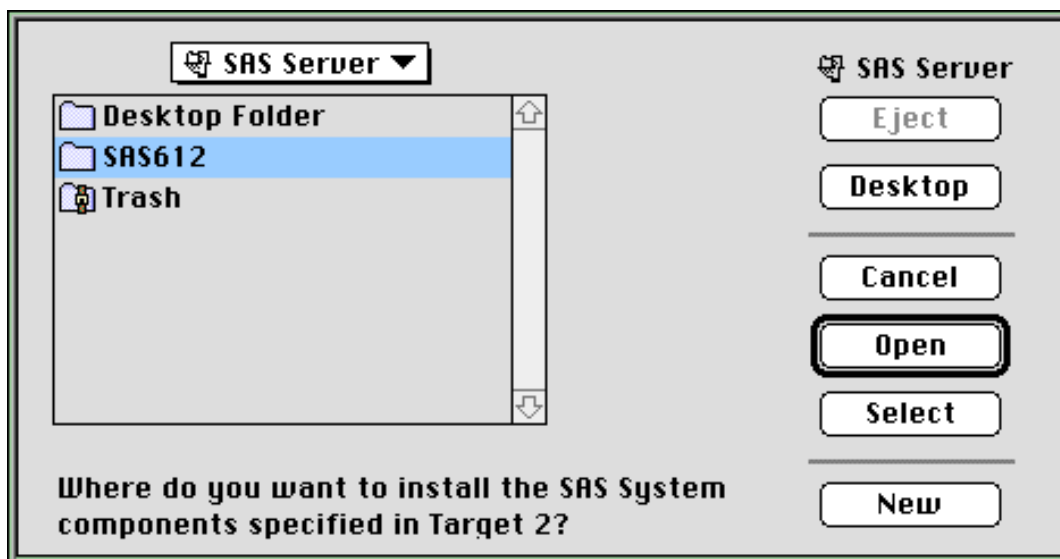


Figure 3.10k

4. Click **Yes** to create a link to the SAS CD-ROM to access SAS/EIS and SAS Desktop software as shown in Figure 3.10l:

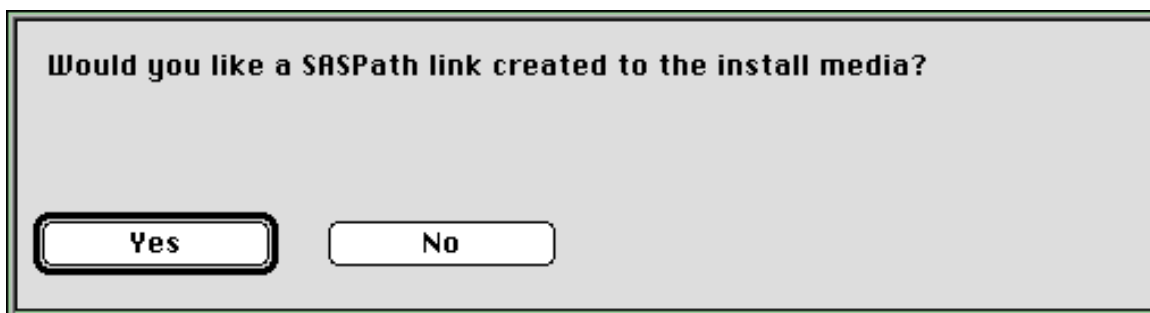


Figure 3.10l

Installed in the selected folder are a SAS application icon, SASPath alias, `config.sas612` file, and a `:cat` folder containing the data sets. Double clicking on the *SAS* application icon allows you to run SAS from the CD-ROM, including SAS/EIS and SAS Desktop software.

Note: You can also specify additional targets and products, but it is important that no product selections be made for Target 1 for the minimum installation to occur.

Notes About the Installation Process{ TC "Notes About the Installation Process" \1 2 }

After you have successfully completed the installation process, you receive a dialog box stating that the installation ran successfully and an install history file has been created. Click the **OK** button or press *Return* to dismiss the dialog box. The history file is stored in `!SASPATH:tools:SAS612_install.history`.

Notes: If you performed a multi-target install, the history file will be stored in the first target folder. Do not delete the install history file. It is necessary in order to install or remove products at a later time.

`!SASPath` points to the target location where the SAS System is installed.

Licensing the SAS System{ TC "Licensing the SAS System" \1 2 }

To license the SAS System, complete the following steps:

1. Invoke the SAS System *Install* application.
2. Click the **License** button from the *Install Application* window.
3. If the specified path is correct, click **Yes** to apply the license; otherwise, select the correct license file and click **Open**.

Note: The license output log file is created in `System Folder:Preferences:SAS:sasuser:setinit.log`

If you are running the SAS System from CD-ROM but need to apply a new license, the install performs the following actions:

- ☐ creates a `SAS:sashelp` folder in your Preferences folder
- ☐ copies the CORE licensing catalog from the SAS CD-ROM to the `SAS:sashelp` folder
- ☐ copies the `config.sas612` file from the SAS CD-ROM to your `SAS` folder, and modifies it so the CORE catalog can be found in the `SAS:sashelp` folder
- ☐ copies your license to `SAS:sasuser:setinit.sas`.

The license is applied to the local copy of the CORE licensing catalog. After the license has been applied, you can still invoke the SAS System by double-clicking on the *SAS* application icon on the SAS CD-ROM.

Note: If you install the SAS System locally at a later time, you will need to delete the sashelp folder and config.sas612 file from the System Folder:Preferences:SAS folder.

Removing SAS Software Products{ TC "Removing SAS Software Products" \12 }

To remove SAS software products from your hard drive, complete the following steps:

1. Invoke the SAS System *Install* application.
2. Click the **Remove** button.
3. Highlight the folder where the SAS System was installed and click the **Select** button.

Note: For multi-target installations, you must select the first target folder. The first target folder contains the install history file which provides information about products installed in other target locations.

4. Select the products you want to remove by clicking the check box beside the product name.
5. Click the **Remove** button as shown in Figure 3.11:

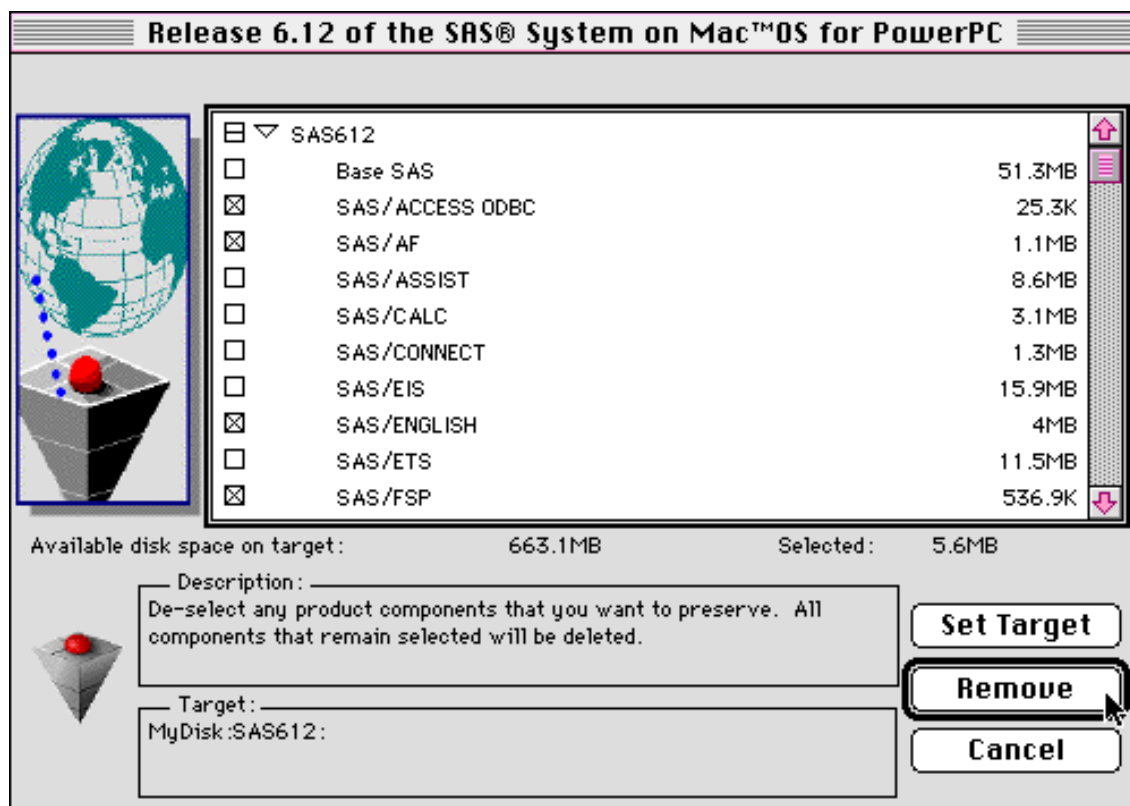


Figure 3.11: The Remove Window

6. Click the **OK** button in the **Verify Your Selection** dialog box to begin removing SAS software products.
7. Click the **OK** button to dismiss the **Product Removal Successful** dialog box.
8. Click the **Exit** button to exit the SAS System *Install* application.

The install history file is automatically updated to reflect the components that were removed. If the entire SAS System was removed, the install history file no longer exists.

Note: If you choose to remove the entire **SAS612** folder, you must run the **Install** application outside the **SAS612** folder.

After the entire **SAS612** folder is deleted, the **System Folder:Preferences:SAS** folder is also deleted.

Exiting the Installation Procedure{ TC "Exiting the Installation Procedure" \1 2 }

When you have finished installing your SAS System products, click the **Exit** button from the *Install Application* window. The *SAS System Install* application then gives you the option of exiting the install by clicking on **Exit**, or returning to the *Install Application* window by clicking on **Cancel** as shown in Figure 3.12. Your products are installed, and you are now ready to invoke the SAS System.

Note: If the install exits prematurely, an error message describing the condition appears in the place of **Exiting from the SAS System Install...** This message is displayed to help you determine if your installed version of the SAS System is incomplete or corrupted.

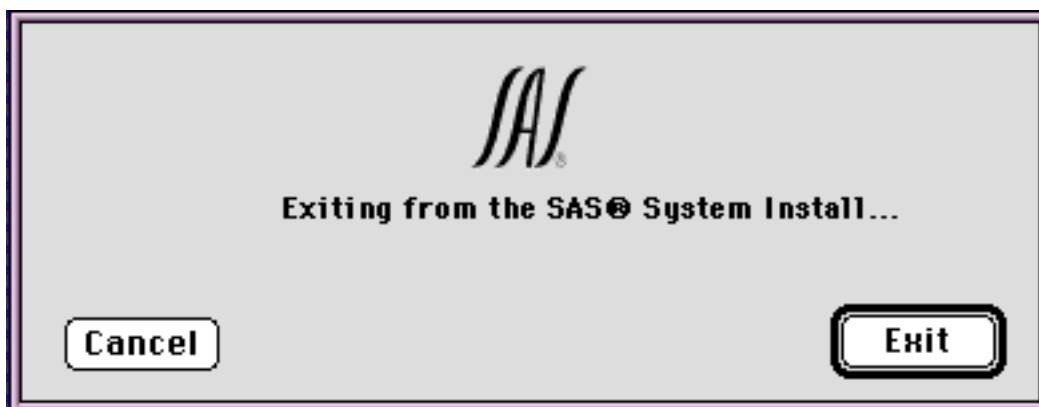


Figure 3.12: Exiting the Installation Procedure

Invoking the SAS System{ TC "Invoking the SAS System" \1 2 }

You have the option of invoking the SAS System in one of two ways:

- ☐ directly from the SAS CD-ROM *or*
- ☐ from an installed version on your hard drive.

To invoke the SAS System from your SAS CD-ROM, double-click the *SAS* application icon in the SAS612-*nnnnnn*:SAS612 folder (where *nnnnnn* represents the 6-digit volume serial number of your CD-ROM).

To invoke the SAS System from the hard drive, double-click the *SAS* application icon in the SAS612 folder, or the folder where you installed the SAS System.

Note: If you performed a multi-target install, then the *SAS* application icon will be stored in the Target 1 folder.



Figure 3.13: The SAS System Application icon

Note: Running the SAS System from CD-ROM will degrade performance due to CD-ROM access rates and the expanded configuration of the SAS System on CD-ROM.

Appendix A, Accessing and Using the { TC "Appendix A, Accessing and Using the " \1 1 } HTML-Based Help and Documentation

If you installed HTML-based help and documentation, or created a SASPath link to the install media, the install set HTML support as the default. Computer-based training-style help is available as well and can be invoked by removing or commenting-out the following lines from your config.sas612 file:

```
-helpenv html  
-helploc "My Disk:SAS612"
```

Some of the on-line documentation, such as the *SAS Companion for the Mac OS for PowerPC* is in HTML format only. To access these documents, use your web browser to open the following file:

```
SAS612:macdoc.html
```

Notes About Cyberdog{ TC "Notes About Cyberdog" \1 2 }

To view the on-line version of the *SAS Companion for the Mac OS for PowerPC* or other on-line documents using Cyberdog, double-click the *Cyberdog* application icon. Once Cyberdog is active, double click AppleTalk Network under Local Area Network in the Cyberdog 1.2 Notebook. Delete the at: from the Location (URL) box and type in the URL as follows:

If you are pointing to the SAS System CD-ROM:

```
file:///SAS612-nnnnnn:SAS612:macdoc.html
```

where nnnnnn represents the 6-digit volume serial number of the SAS System CD-ROM.

If you are pointing to an installed location:

```
file:///My Disk:SAS612:macdoc.html
```

Important: *Cyberdog* will take a long time to load some of the HTML documents. Additionally, the Back button in *Cyberdog* will not always return you to where you expect due to limitations of *Cyberdog*. *Cyberdog* is only provided for use if you do not have another web browser available. It is recommended that if you do have another web browser available, that you use it instead of *Cyberdog*.

Appendix B, Installing the SAS/ ACCESS[®] Interface to ODBC{ TC "Appendix B, Installing the SAS/ ACCESS[®] Interface to ODBC" \1 1 }

Before you can use the SAS ODBC Pass-Through engine, you must install an ODBC driver for the database management system (DBMS) you want to access. An ODBC driver processes ODBC function calls from, and returns results to SAS/ ACCESS software. You can obtain ODBC drivers from your database vendor and third party ODBC driver developers.

SAS/ ACCESS Interface to ODBC, Release 6.12 for Mac OS for PowerPC, is a native PowerPC application. Therefore, PowerPC ODBC drivers are required, and 680x0 Macintosh ODBC drivers are no longer supported.

An ODBC Driver Manager and Administrator are included with most ODBC drivers. When you install an ODBC driver, the Driver Manager and Administrator are also installed. The ODBC Administrator typically appears as an *ODBC Setup* icon in the Control Panels folder located in the System folder. It can also be accessed from the Apple menu by selecting ODBC Setup from the Control Panels menu item.

After installing the ODBC driver, use the ODBC Administrator to define and manage data sources. A data source associates a particular ODBC driver with the data you want to access using that driver. It can consist of information such as the database name, server name, user ID and other information needed to connect to the data. For information about how to configure your data sources, refer to the documentation provided with your ODBC drivers.

For more information about SAS/ ACCESS Interface to ODBC, refer to *SAS/ ACCESS Software Changes and Enhancements: SQL Procedure Pass-Through Facility, Version 6*. For more information about ODBC, refer to *Microsoft ODBC 2.0 Programmer's Reference and SDK Guide*.

Appendix C, Post-Installation Setup for SAS/ ASSIST[®] Software

{ TC "Appendix C, Post-Installation Setup for SAS/ ASSIST[®] Software" \l 1 }

This appendix describes how to add an optional master profile to SAS/ ASSIST software. A master profile can be used to override the default settings as sent by SAS Institute. This allows you to provide a customized setup for SAS/ ASSIST software. With the master profile you can control the profile options of all SAS/ ASSIST users from one central place. For information on the profile options refer to *SAS/ ASSIST Software: Changes and Enhancements, Version 6*.

Complete the following steps to add a master profile to SAS/ ASSIST software:

1. Specify the location of the master profile by creating a new directory to which all users of SAS/ ASSIST software will have read-access.

All users with write-access to this directory will automatically also have write access to the master profile in SAS/ ASSIST software. Select a name which conforms to the naming conventions at your installation. The name of this new directory must be stored in an entry in the SASHELP library. This requires that you have write access to the SASHELP library.

On line 1 of the *Program Editor* window of the SAS Display Manager System, type the physical pathname of the master profile directory. Execute the `Save` command to store this in the SASHELP.QASSIST catalog. Save it as `sashelp.qassist.parms.source`. The location of the master profile is now known by SAS/ ASSIST software.

2. Create the master profile.

The first time SAS/ ASSIST software is started a master profile is created if the SASHELP.QASSIST.PARMS.SOURCE contains the name of an existing physical pathname, and the person who starts SAS/ ASSIST software has write-access to this physical pathname.

3. Customize the master profile by starting SAS/ ASSIST and selecting
SETUP ... Master/group...

If you have write-access to the SAS library containing the master profile you can specify default values for your installation. These values will be used by new users as they start SAS/ ASSIST software.

Note: If you restrict values by typing `R` in `Status`, users will not be allowed to change the values you define.

SAS/ASSIST software contains a new menu bar and a new saving mechanism that are controlled using the profile options below.

Run old style:

Save selections on end:	No
Menu Style:	Old

Run new style:

Save selections on end:	Yes
Menu Style:	New

By setting the default values in the master profile you can control if users should use the new or old style SAS/ASSIST software. In addition, there are many other profile options. For more information on these options, refer to *SAS/ASSIST Software: Changes and Enhancements, Version 6*.

4. Create Group profiles.

From the master profile it is possible to create group profiles to allow groups of users to have different setups. The master profile controls group profiles and user profiles when a user is not a member of any group. All users are indirectly controlled by the master profile when option values are set to a restricted (R) status.

From Setup...Master/Group, select Locals...Create Group Profile. To add users to a group profile, select Locals...Update User Group. By default the userid is found in the macro variable &SYSJOBID. This value is set in the option Userid in the master profile (option type System Administration). Change the value if your site uses another variable to keep the userid. If the value name starts with &, it is a macro variable, otherwise it is an environment variable, which is set before the start of the SAS System.

Appendix D, Post-Installation Setup for SAS/CONNECT[®] Software{ TC "Appendix D, Post-Installation Setup for SAS/CONNECT[®] Software" \1 1 }

The first section of this appendix, "Storing and Locating SAS/CONNECT Script Files," describes the use of the sample script files that are shipped with SAS/CONNECT software. The final section, "System Configuration for the TCP Access Method" provides configuration information specific to the TCP/IP access method. The TCP/IP access method is currently supported on Mac OS PowerPC. Refer to *SAS/CONNECT Software: Usage and Reference, Version 6, Second Edition* for complete information on the access methods supported by other systems.

Storing and Locating SAS/CONNECT Script Files{ TC "Storing and Locating SAS/CONNECT Script Files" \1 2 }

Several sample script files are shipped with SAS/CONNECT software. SAS/CONNECT software uses these script files to establish a connection to a remote SAS session.

There is a new configuration option, SASSCRIPT, that points to the location of the SAS/CONNECT script files. The SASSCRIPT option is used by SAS/ASSIST software and can be used by user-written SCL applications.

On Mac OS for PowerPC, the script files are installed into the `!SASPATH:misc` directory by default. The following line is already present in the `config.sas612` file in the installed SAS612 folder:

```
-sasscript !SASPATH:misc
```

Note: `!SASPath` points to the target location where the SAS System is installed.

If you want to move the script files to another folder, you must edit the `config.sas612` file and update the SASSCRIPT option with the new folder location.

System Configuration for the TCP Access Method{ TC "System Configuration for the TCP Access Method" \1 2 }

Note: This information is required to use TCP.

Using the TCP access method on Mac OS PowerPC, you can connect to any supported platform that is on the TCP/IP network, that is running a release of the SAS System that has corresponding access method support, and that has SAS/CONNECT software licensed. With the TCP access method, one of the supported TCP/IP products must be installed on any node, local or remote, that you want to use with SAS/CONNECT software. The TCP access method runs with both MacTCP and Open Transport. You should verify that the following line is in your `config.SAS612` file:

```
-set GSBN_telnet 23
```

The `GSBN_telnet` value must be set to the port defined as your TELNET port. Usually this is port 23. The `GSBN_telnet` value can be verified by submitting the following:

```
%put %sysget(GSBN_telnet);
```

If you are using Remote Library Services to access data through one or more multi-user SAS servers, you will need to add a line like the following:

```
-set GSBN_shr1 5010
```

to your `config.sas612` file, where `shr1` represents the name of a SAS server, and 5010 is the port number assigned to the SAS server. For example, if you want to access three SAS servers named `mkt serv`, `sas share`, and `test serv`, where the port numbers are 5015, 5018, and 5020, the following lines should be in your `config.sas612` file:

```
-set GSBN_mkt serv 5015
-set GSBN_sas share 5018
-set GSBN_test serv 5020
```

Typically, the persons responsible for SAS applications you use will be able to tell you the name and port number of each SAS server you need. Alternatively, to obtain the names of the SAS servers at your site, and the TCP/IP port number assigned to each one, contact your SAS Representative.

Appendix E, Post-Installation Setup for SAS/SHARE[®] Software{ TC "Appendix E, Post-Installation Setup for SAS/SHARE[®] Software" \1 1 }

This appendix provides configuration information specific to the TCP/IP access method. The TCP/IP access method is currently supported on Mac OS PowerPC and most other platforms on which SAS/SHARE software is available.

System Configuration for the TCP Access Method{ TC "System Configuration for the TCP Access Method" \1 2 }

Note: This information is required to use TCP.

This step is required for each Mac OS PowerPC that is used to run a SAS server (PROC SERVER). This step is also required for each Mac OS PowerPC that will connect to a SAS server, whether the SAS server is on another Mac OS PowerPC, or on a different platform.

Using the TCP access method on Mac OS for PowerPC, you can connect to any supported platform that is on the TCP/IP network, that is running a release of the SAS System that has corresponding access method support, and that has SAS/SHARE software licensed. With the TCP access method, one of the supported TCP/IP products must be installed on each node on which you want to use SAS/SHARE software. The TCP access method runs with both MacTCP and Open Transport.

You should also verify that a line like the following:

```
-set GSBN_shr1 5010
```

is in your `config.SAS612` file, where `shr1` represents the name of a SAS server, and `5010` is the port number assigned to the SAS server. For example, if you want to access three SAS servers named `mktserve`, `sasshare`, and `testserve`, where the port numbers are 5015, 5018, and 5020, the following lines should be in your `config.sas612` file:

```
-set GSBN_mktserve 5015
-set GSBN_sasshare 5018
-set GSBN_testserve 5020
```

Typically, the persons responsible for the SAS applications you use will be able to tell you the name and port number of each SAS server you need. Alternatively, to obtain the names of the SAS servers at your site, and the TCP/IP port number assigned to each one, contact your SAS Representative.

If you are responsible for creating a new SAS server, you must coordinate with other SAS server administrators on your TCP/IP network to be certain that you choose a unique TCP/IP port number for your server.

The GSBN_<server name> value can be verified by submitting the following:

```
%put %sysget(GSBN_<server-name>);
```

Appendix F, Accessing SAS/TUTOR[®] Software{ TC "Appendix F, Accessing SAS/TUTOR[®] Software" \l 1 }

SAS/TUTOR software can be invoked directly from the SAS System. To access the SAS/TUTOR courses, complete the following steps:

1. Invoke the SAS System.
2. Click the ? in the upper right corner of the screen and select Online Training.

Appendix G, The SITEINFO File{ TC "Appendix G, The SITEINFO File" \1 1 }

The `SITEINFO` file provides site-specific information in a form that is modifiable by the local SAS site. You can view this file in full-screen mode by typing `SITEINFO` at the Display Manager command prompt or in the command palette.

The `SITEINFO` file is defined in the configuration file, `config.sas612`, located in your `SAS612` folder from an Easy or Custom install. For example, if you installed the SAS System in `MyDisk:SAS612`, `SITEINFO` is defined as the following in `config.sas612`:

```
-siteinfo "MyDisk:SAS612:tools:siteinfo.txt"
```

Choose the appropriate command based on the type of install performed at your site.

The SAS Site Representative should modify the contents of the file to include site-specific information. The `SITEINFO` file is a SimpleText document. It is recommended that you edit the file using 9 or 10 point Courier font. A copy of the template on which these changes should be made is shown in the following example:

* SAS Licensed Installation Information:

Site Number:
Site Name:

Please provide the above information with all documentation sent to SAS Institute when reporting a suspected problem.

* Installation Name and Address:

Name:
Address:

Telephone:

- * SAS Software Representative (this is the person to whom SAS Institute directs all communication about products installed at this site):

Name:
Telephone:

- * Installation Consulting Group:

Name:
Telephone:

Request for help with SAS programming problems should be directed to your installation's consulting group.

- * Requests for information concerning SAS courses or other educational services should be directed to the following individual and/or group:

Name:
Telephone:

- * Following is a list of SAS Institute software products installed at this site:

Institute Program Product	Model Name	CPU Group	Serial
-----	-----	-----	-----
Use this column to list SAS software installed at your site; include version numbers:	Use this column to list Model Name:	Use this column to list CPU Group:	Use this column to list serial numbers

Appendix H, The SAS® News File{ TC "Appendix H, The SAS® News File" \1 1 }

The SAS News file provides the SAS System Administrator a way of broadcasting information to all SAS users when they startup the SAS System. The contents of the file are displayed as a header when the SAS System starts up.

The SAS News file is defined in a configuration file, `config.sas612`, located in your SAS612 folder from an Easy or Custom install. For example, if you installed the SAS System in `MyDisk:SAS612`, SAS News is defined as the following in `config.sas612`:

```
-news "MyDisk:SAS612:tools:sasnews"
```

Choose the appropriate command based on the type of install performed at your site.

The file can be modified to include site-specific information. The SAS News file is a SimpleText document. It is recommended that you edit the file using 9 or 10 point Courier font. A copy of the template on which these changes should be made is shown in the following example:

Welcome to the SAS System.

Note: If you installed HTML-based help and documentation or created a SASPath link to the install media, the install set HTML support as the default. Refer to the "SAS Install Readme" file or Chapter 2 of the installation instructions for more information on requirements for HTML support.

To view SAS Help as you have in earlier releases of the SAS System, refer to Appendix A of the installation instructions for more information.

Appendix I, Installing SAS[®] Notes{ TC "Appendix I, Installing SAS[®] Notes" \1 1 }

This appendix describes the tools used to install SAS Notes onto the SAS System for Mac OS for PowerPC. SAS Notes are included on the installation media and on monthly SAS Notes media.

Installation Media{ TC "Installation Media" \1 2 }

The installation media contains the SAS Notes. You can install the SAS Notes during product installation. If you choose not to install the SAS Notes, you can install them later by:

1. Rerunning the *SAS System Install* application.
2. Clicking on the `Install` option from the *Install Application* window.
3. Indicating that you want to install the SAS Notes.

Monthly SAS Notes Media{ TC "Monthly SAS Notes Media" \1 2 }

The SAS Notes contain hints for using SAS software, discuss compatibility and documentation issues, and provide information about known problems with the SAS System. This appendix contains instructions for installing the monthly SAS Notes media. The most recent media is available upon request from the SAS Institute Distribution Department. Each new SAS Notes media supersedes the previous media. For more information on accessing the SAS Notes, see “The SAS Notes and Utilities” later in this appendix.

Overview of the Installation Procedure{ TC "Overview of the Installation Procedure" \1 2 }

The monthly SAS Notes media uses the same installation procedure as the SAS product media. To install the monthly SAS Notes media, initiate the *SAS System Install* application as described in Chapter 3, "Installing the SAS System."

When the *Install Application* window is displayed, click the `Install` option. The `Install` option is described in detail in Chapter 3. Refer to this chapter during the installation of the monthly SAS Notes media.

The installation procedure enables you to load SAS Notes containing Usage notes and SAS product updates (if any are available). Usage notes contain tips for using the SAS System, known problems and potential solutions, and compatibility issues between SAS System releases. SAS

product updates are additions or replacements of the SAS software products and are used to update your version of the SAS System between releases.

The SAS Notes and Utilities{ TC "The SAS Notes and Utilities" \12 }

The SAS Notes files are located in `!SASPATH:usage` and include:

- ❑ A Release 6.12 format SAS Usage notes data set containing the list of the current SAS software problems for Release 6.12, usage hints, and information about compatibility issues
- ❑ Modified screens for browsing those data sets with PROC FSBROWSE
- ❑ SAS programs for processing the SAS Notes data set
- ❑ The SUPPORT Application for displaying the SAS Notes and Sample Library programs.

Once these files are installed, you can run one or both of the SAS programs, `SELECT.SAS` and `PRINT.SAS`.

Using the SAS Programs{ TC "Using the SAS Programs" \13 }

The `SELECT.SAS` file creates a subset of the Usage notes, based on your select criteria, specified in the `PARMS.SAS` file.

The `PRINT.SAS` file prints out the Usage notes. Change parameters in the `PARMS.SAS` file to customize the output from the `PRINT.SAS` program.

If maintenance is supported for a release, the `FIXREPT.SAS` file produces a report showing which outstanding problems in the Usage Notes have been fixed by maintenance. Change parameters in the `PARMS.SAS` file when using this program.

The `PARMS.SAS` file contains the parameters used by the `SELECT.SAS`, `PRINT.SAS`, and `FIXREPT.SAS` programs. Each parameter is preceded by a comment block that explains the parameter and describes the valid values.

The `READPRM.SAS` file reads and verifies values in the `PARMS.SAS` file. Do not modify this program.

Accessing the SAS Notes{ TC "Accessing the SAS Notes" \13 }

The SAS Notes can be browsed on-line with either of two methods, the SUPPORT facility, or the FSBROWSE procedure in SAS/FSP software. For more information on the SUPPORT facility, a windowing application for accessing the SAS Notes and the Sample Library, see “The SUPPORT Application” below. Those sites that license SAS/FSP software may want to access the SAS Notes interactively with PROC FSBROWSE. For example, if you installed the SAS System in MyDisk:SAS612, use the following SAS statements for the SAS Notes :

```
libname library 'MyDisk:SAS612:usage';  
proc fsbrowse data=library.usage screen=library.screen;  
run;
```

Note: The libref on the LIBNAME statement must be LIBRARY.

The default search arguments are MODULEN, PROD, and KEYS. If you want to search other fields, first issue a STRING command. For more information on the FSBROWSE procedure, refer to *SAS/FSP Software: Usage and Reference, Version 6, First Edition*.

The SUPPORT Application{ TC "The SUPPORT Application" \13 }

The SUPPORT Application is a windowing application for accessing the SAS Notes and the Sample Library, which runs under Base SAS software. The primary menu of the SUPPORT Application contains the following options:

- ☐ SAS NOTES
- ☐ SAMPLE LIBRARY
- ☐ MAINTENANCE
- ☐ OPTIONS.

The primary menu also gives you two choices for leaving the application, EXIT and GOBACK. Click EXIT to close the SUPPORT Application and exit SAS. Click GOBACK to close the SUPPORT Application but not exit the SAS System.

The SUPPORT Application can be invoked several ways. The easiest way to invoke the application is to double-click the SUPPORT.SAS file under the !SASpath:usage folder.

To start the SUPPORT Application from inside a SAS session, include the following commands into your *Display Manager Editor* window and submit:

```
libname library 'MyDisk:SAS612:usage';  
dm 'af c=library.screen.primary.program' af;
```

These commands can also be included as part of an autoexec file.

SAS Notes{ TC "SAS Notes" \14 }

To view or print the SAS Notes, click `SAS NOTES` from the primary menu of the SUPPORT Application. The SAS Notes menu is displayed with the following options:

☐ `FSBROWSE`

allows you to browse the SAS Notes using PROC FSBROWSE if you have SAS/FSP software licensed. The default search arguments are `MODULEN`, `PROD`, and `KEYS`. If you want to search other fields, first issue a `STRING` command. For more information on the FSBROWSE procedure, refer to *SAS/FSP Software: Usage and Reference, Version 6, First Edition*.

☐ `VIEW (AF)`

allows you to view the SAS Notes using windows available in Base SAS software. If you choose this method, you are prompted to enter keywords by which to subset the SAS Notes. A list of SAS Notes titles is displayed based on the keywords entered. You can select a note from this list to display by clicking on the title.

To help locate relevant SAS Notes, you can enter up to two individual keywords, one `PRODUCT` name, and/or one `MODULEN` field key. You can also enter a `?` in either of the last two fields to display appropriate selection list(s). The three “filtering” push buttons can also be used to refine your search.

When you have defined your search criteria, press the `RUN SEARCH` push-button to display a scrollable list of SAS Notes titles. You can view a SAS Note by clicking on its title or `MODULEN` field.

☐ `PRINT`

allows you to print a subset of the SAS Notes. You can create the subset by `MODULEN` and/or `PRODUCT`. Click `OUTPUT` to view or clear the *Output* window or send its contents to a printer.

Sample Library{ TC "Sample Library" \14 }

The SUPPORT Application also allows you to access the programs from the SAS Sample Library. The SAS Sample Library is a diverse collection of SAS programs that illustrate specific applications of SAS software and demonstrate different approaches to programming problems. Also included in the Sample Library are many of the examples that appear in SAS documentation.

To access the SAS Sample Library from the SUPPORT Application, click `SAMPLE LIBRARY` from the primary menu, and then select the SAS product in which you are interested to get the Sample Library main menu. From this menu you can choose any of the following options:

☐ INDEX

creates an index of the sample programs. The index is saved in a catalog in your `SASUSER` library as an entry called `INDEX` with a type of `OUTPUT`. The `INDEX.OUTPUT` entry can be viewed or printed through the `SAVED` and `OUTPUT` options on the Sample Library main menu, or outside this application. Note that once the Sample Program index has been created, you do not need to generate it again, since it will be stored permanently in your `SASUSER` library.

☐ PROGRAMS

allows you to browse, edit, run or print individual sample programs. Programs are selected by a keyword value. To select programs by keyword, push the `SELECT KEYWORD` button. A keyword list will be shown from which to select. Choose one and a program selection list is displayed.

☐ SAVED

allows you to access catalog entries of types `SOURCE` and `OUTPUT` that have been saved in your `SASUSER.PROFILE` catalog. You can chose to edit, browse, print, delete, file or rename `SOURCE` or `OUTPUT` type members, and you can execute `SOURCE` members.

☐ OUTPUT

allows you to manipulate information directed to the *Output* window. To print the contents of the *Output* window, click `PRINT`. To clear the contents of the *Output* window, click `CLEAR`. To view the contents of the *Output* window, click `VIEW`.

Maintenance{ TC "Maintenance" \14 }

If maintenance is supported for a release, the maintenance releases are identified by unique TS level numbers. The MAINTENANCE menu displays the different TS levels found in the installed SAS Notes, and allows TS Level subsetting of the SAS Notes.

To help locate relevant SAS Notes, you can enter up to two individual keywords, one PRODUCT name, and/or one MODULEN field key. You can also enter a ? in either of the last two fields to display appropriate selection list(s). The three “filtering” push buttons can also be used to refine your search.

When you have defined your search criteria, press the *RUN SEARCH* push-button to display a scrollable list of SAS Notes titles. You can view a SAS Note by clicking on its title or MODULEN field.

Options{ TC "Options" \14 }

The OPTIONS menu allows you to set and save certain useful SUPPORT options. To change the color scheme of the block menus, click MENU COLORS. To set printing parameters, click PRINT PARMS. To set a particular folder for the Sample Library, click SAMPLE DIRNAME. To save these options you have set in your SASUSER.PROFILE catalog, click SAVE OPTIONS.

Appendix J, Accessing SAS[®] Samples{ TC "Appendix J, Accessing SAS[®] Samples" \11 }

Sample programs for SAS software products are provided on the installation media. A SAS Site Representative may choose not to load the sample programs onto the system during the initial install. If they are needed later, they can be installed with the installation procedure.

There are three general librefs that access the data used in sample programs. They are:

- ❑ **MAPS**
SAS/GRAPH map data sets.
- ❑ **IMAGFIL**
sample *.GIF files for SAS/GRAPH Image Extensions.
- ❑ **SAMPSIO**
SAS data sets and catalogs needed for the sample programs.

The MAPS and IMAGFIL librefs are for use with SAS/GRAPH software. The libref `MAPS` is globally defined for you in `!SASPATH:config.sas612`. The IMAGFIL libref can be defined in the *Display Manager Editor* window or from a site autoexec file. Issue the following command:

from CD-ROM:

```
libname imagfil 'SAS612-nnnnnn:sample:<product>:sasdata';
```

where `nnnnnn` represents the 6-digit volume serial of the SAS System CD-ROM.

from an installed version of the SAS System:

```
libname imagfil 'MyDisk:SAS612:sample:sasdata';
```

where `MyDisk:SAS612` represents the location of the installed SAS System.

The SAMPSIO libref must be defined to access the catalogs and data sets in the product folders under the sample folder. A single folder libref can be assigned using the following model:

from CD-ROM:

```
libname sampsiio 'SAS612-nnnnnn:sample:<product>:sasdata';
```

where `nnnnnn` represents the 6-digit volume serial of the SAS System CD-ROM.

from an installed version of the SAS System:

```
libname sampsiio 'MyDisk:SAS612:sample:sasdata';
```

where `MyDisk:SAS612` represents the location of the installed SAS System.

A sample autoexec file, `SAMPLE.SAS`, located under `!SASPATH:usage` contains a concatenated `libname` statement for assigning `SAMPSIO`. This file must be customized to include only products licensed at your site for which you have installed samples, since all sample product folders containing catalogs and data sets are included. `SAMPLE.SAS` can be invoked through a config file, or by dropping the file into the *Display Manager Editor* window and issuing a `submit` command.

For more information concerning accessing the SAS samples, see "Sample Library, " in Appendix I, "Installing SAS Notes".

Appendix K, Installing SAS® Product Updates{ TC "Appendix K, Installing SAS® Product Updates" \1 1 }

This appendix describes how to install SAS product updates onto your system. SAS product updates are included on the installation media and on SAS Notes media.

SAS product updates are files that contain fixes to problems found in the SAS System that have not yet been incorporated into a maintenance or new production release, but that SAS Institute Technical Support deems important enough to deliver to customers as needed.

It is recommended that you install the SAS product updates on your system.

Monthly SAS Notes Media{ TC "Monthly SAS Notes Media" \1 2 }

SAS product updates are automatically included on monthly SAS Notes media. The most recent media is available upon request from the SAS Institute Distribution Department. Each new SAS Notes media supersedes the previous one. For more information on accessing the SAS Notes, see Appendix I, "Installing SAS Notes."

Installing SAS Product Updates into An Existing SAS System Location{ TC "Installing SAS Product Updates into An Existing SAS System Location" \1 3 }

If you are installing SAS product updates into an installed SAS System location on your hard drive, they must be installed last to be in effect when you invoke the SAS System.

If you have already installed the SAS System on your hard drive, it is recommended that you install SAS product updates into the same SAS System area. SAS product updates replace existing files in the SAS System area on your hard drive.

From the *Install Options* pop-up menu selection list, choose *Custom*.

Note: If you originally performed a multi-target install, you can use a single or multi-target install to apply updates. If you use a single install to apply updates, point to the first target folder; if you use a multi-target, point target 1 to the first target folder. You do not need to define the remaining original targets.

See "Installation Options" in Chapter 3, "Installing the SAS System" for more information about installation options.

After you have selected the appropriate install option, complete the following steps:

1. Click `SAS612` to de-select all components.
2. Click the check box to the left of `SAS Product Updates` to select the updates.
3. Click `Install`.

If a target location for the SAS System has not been specified, the *Set Target* window is displayed.

Note: When prompted for the SAS System target location, be sure to specify the same target location where the SAS System is already installed on your hard drive.

Only updates for licensed products are installed on your system. As the SAS product updates process runs, a log detailing what files are installed onto your hard drive is created and stored in:

```
!SASPATH:updates:Updates.log_ddmmmyy.
```

where `ddmmmyy` represents the date you installed the product updates.

A *Print* window appears and displays informational messages indicating what the SAS product updates process is doing. When the products are updated, the *Print* window closes and a dialog indicating that the process is finished appears. You are then returned to the *Install Application* window.

As the SAS product updates process runs, a log detailing what files are installed onto your hard drive is created and stored in:

```
!SASPATH:updates:Updates.log_ddmmmyy.
```

When the products are updated, the *Print* window closes and a dialog indicating that the process is finished appears.

Appendix L, Installing National Language Support{ TC "Appendix L, Installing National Language Support" \1 1 }

NLS translations are stored in the SAS612 folder on the SAS System CD-ROM. They are stored in a folder named according to the language you requested as shown in the following example:

```
SAS612-nnnnnn:SAS612:Japanese
```

where nnnnnn represents the 6-digit volume serial number of your SAS System CD-ROM.

The translated version of the SAS System is executable from the SAS System CD-ROM by invoking the SAS application stored in the translation folder. SAS will find any translated pieces in the translation folder, and then use a SASPath link to search the English version.

Installing a Translation{ TC "Installing a Translation" \1 2 }

If the SAS System Install application has been translated, it will appear in the root of the SAS System CD-ROM along with the English version, but will be named according to the specific language as shown in the following example:

```
SAS612-nnnnnn:SAS System Install - Japanese
```

where nnnnnn represents the 6-digit volume serial number of your SAS System CD-ROM.

Use the translated version of the SAS System Install application if it exists; otherwise, use the English version. Once you have invoked the SAS System Install (English version or translated version as appropriate), the install will function as documented. Any translations on the media will be listed as separate items in the list of products to install as shown below:

```
DBCS Translation  
Japanese Translation
```

For Easy Installs, the Install application automatically installs the translated components for the products you have selected. For Custom Installs, the translations appear in the list of products. To display product selections for a particular translation, click the triangle to the left of the translation description. Language translations are loaded in the specified target location in language-specific folders. Use the SAS application stored in this location to invoke the translated version of SAS. For example, to invoke the Japanese version of the SAS System, double-click the SAS application icon stored in:

`MyDisk:SAS612:Japanese`

SAS will find any translated pieces in the translation folder, and then use a SASPath link to search the English version.

Government Notice{ TC "Government Notice" \11 }

If you are a government site, a file containing information specific to your site is extracted during the product installation phase of the installation procedure. The file can be located in the `SAS612:tools` folder.

If you performed an Easy or Custom install, and you installed on your hard disk, `MyDisk:`, the government notice is located in:

`MyDisk:SAS612:tools:government.notice`

Note: It is important that you read this file, and that you make other users at your site aware of this information.