

# Software Renewal Instructions

## SAS<sup>®</sup> 9.2 Foundation for Microsoft<sup>®</sup> Windows<sup>®</sup>

SAS software is licensed on a calendar basis. In order to run your licensed software, you must supply SAS Installation Data to renew your software.

**Important:** *Restart all SAS Servers and SAS Spawners after you renew your software. In order to use any newly licensed products included in a new SAS Installation Data file and for new expiration dates to take effect, you must restart all SAS Servers and SAS Spawners after you apply the new SAS Installation Data file.*

There are two methods for renewing your SAS software:

1. End User Role: Renewing SAS Software
2. Administrator Role: Updating SAS Installation Data for a Client or Personal Server Image

### SAS Installation Data

Your SAS Installation Data file must be updated when the license period has expired, and/or there has been a change in the SAS software product bundle covered by the license. The information below is an overview of the software renewal process and the part that SAS Installation Data plays in it.

Please visit Install Center, <http://support.sas.com/documentation>, for all the documentation needed for your installation.

### **SAS Installation Data in the Software Order E-Mail**

When SAS software is ordered, your designated installation representative receives an e-mail from SAS. This e-mail includes a single text file attachment that lists your SAS Installation Data. Use the instructions provided in the e-mail to save the data to disk.

It is recommended that you save this e-mail and attachment on your hard drive, or to another location that is backed up regularly. Without this data, you will not be able to perform a SAS 9.2 installation. After you save the data to disk, the File option can be used in the Retrieve SAS Installation Data window during installation, to provide the disk location for obtaining this data.

### **Requesting a Temporary SAS Installation File (SID)**

For emergency situations, you can download a temporary SID that will extend the use of your licensed SAS software products for six days. Please visit SAS Install Center, <http://support.sas.com/techsup/license/>

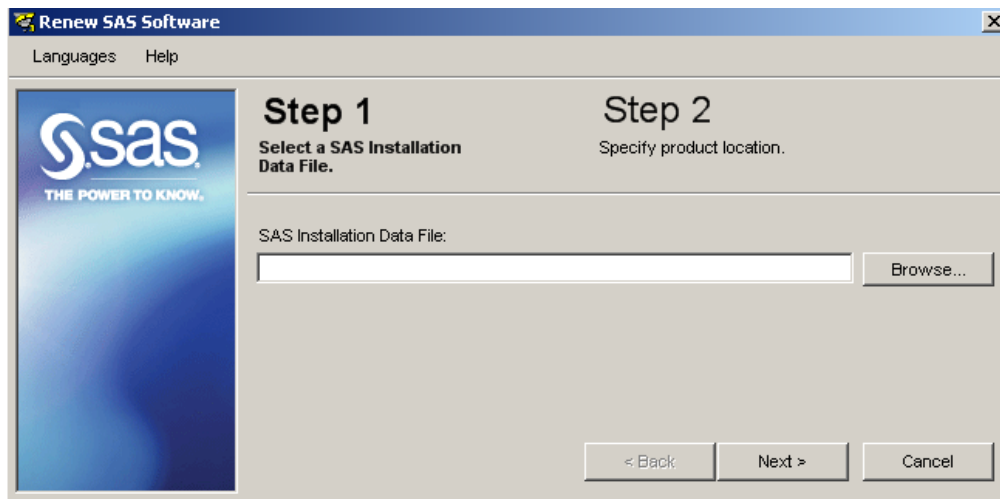
Click **Request a temporary license extension for all SAS releases**. For security purposes, you will be required to enter a password.

## End User Role: Renewing SAS Software

If you already have SAS software installed, the Renew SAS Software utility applies SAS Installation Data. From the **Start** menu, select **Programs** (or **All Programs** on Windows XP) -> **SAS** -> **SAS 9.2 License Renewal & Utilities** -> **Renew SAS Software**.

If the Renew SAS Software tool cannot be reached from the Start menu, the tool can be located on your hard drive. Open Windows Explorer (Click on the **Start** button, select **run** from the menu and type *Explorer*). Go to the following directory: `c:\Program Files\SAS Foundation\9.2\core\sasinst\sasrenew`. Double-click on **sasrenew.exe** to start the Renew SAS Software tool.

As the text at the top of the Renew SAS Software window indicates, there are two steps in renewing your SAS software:



1. Select a SAS Installation Data File.
2. Specify product location.

Click **Next** to advance through the steps.

## Administrator Role: Updating SAS Installation Data for a Client or Personal Server Image

If you already have a Server installation of SAS software in place, you can update the SAS Installation Data on the server image.

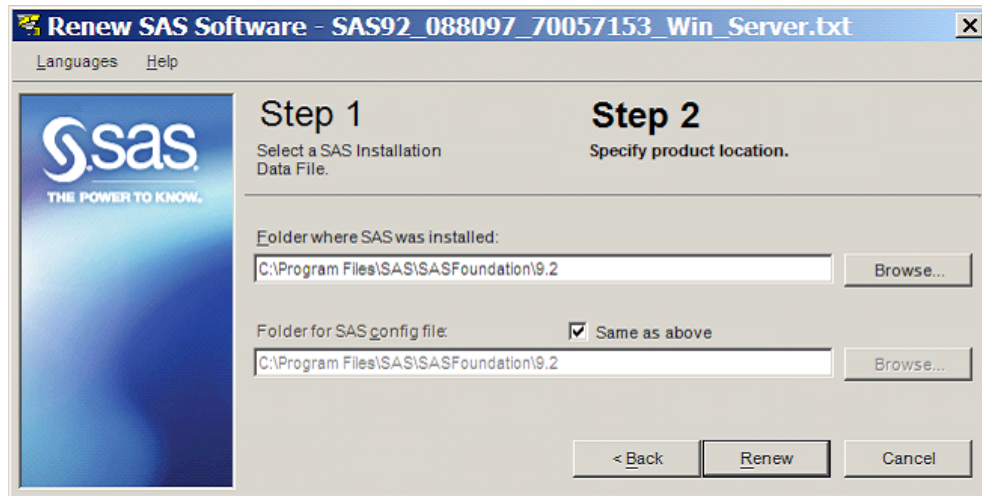
To update a Server license, you must have write-access on the system where the SAS Server installation is located. To update a Client Server license, you also must log on to a system that has either a Client or Personal installation in place.

For a Personal Server, copy the new SAS Installation Data file to the `sid_files` directory in the server image. Users who install SAS from the server image should specify the new file when the Software Deployment Wizard prompts for the SAS Installation Data.

For a Client Server, run the Renew SAS Software utility on a system where SAS is installed. If a Personal SAS installation is used, start the utility from the Start menu by selecting **All Programs** ->

**SAS -> SAS 9.2 License Renewal & Utilities -> Renew SAS Software.** If a Client SAS installation is used, the utility can be started by double-clicking on `sasrenew.exe` in the following directory:  
<SASHOME>\SAS Foundation\9.2\core\sasinst\sasrenew.

<SASHOME> is the directory that was selected for installing all SAS products. The default <SASHOME> path is `C:\Program Files\SAS`.



After you start the Renew SAS Software utility, proceed as described above in “End User Role: Renewing SAS Software” with the following two changes in the Step 2, “Specify product location” dialog:

- Clear the “Same as above” check box.
- In the “Folder where SAS was installed” field, type or browse to the `sasroot` directory in the Client Server image where `sas.exe` is located. This will be the `Products\sasinstall__<version and specific Client Server>\sas` directory in the Client Server image.

The “Folder for SAS config file” field will typically default to the correct path on the system where you are running the Renew SAS Software utility, but you should verify the path and correct it if necessary.

*SAS and all other SAS Institute product or service names are registered trademarks or trademarks of SAS Institute Inc. in the USA and other countries. Other brand and product names are registered trademarks or trademarks of their respective companies.*

*® indicates USA registration.*

*Copyright © 2008 SAS Institute Inc. Cary, NC, USA. All rights reserved.*