

Online in SAS 9.1:

Software Renewal Instructions for SAS 9.1 Foundation for Microsoft Windows

SAS software is licensed on a calendar basis. In order to run each software product, you must supply SAS Installation Data to renew your software.

Important: *Restart all SAS Servers and SAS Spawners after you renew your software. In order to use any newly licensed products included in a new SAS Installation Data file and for new expiration dates to take effect, you must restart all SAS Servers and SAS Spawners after you apply the new SAS Installation Data file.*

There are three methods for renewing your SAS software:

1. End User Role: Renewing SAS Software
2. Administrator Role: Retrieving SAS Installation Data with the SAS Administrator Wizard
3. Administrator Role: Updating SAS Installation Data on the Server Image

SAS Installation Data

Your SAS Installation Data file must be updated when the license period has expired, and/or there has been a change in the SAS software product bundle covered by the license.

The chapter “Renewing Your SAS Software” in the *Administrator Guide for SAS 9.1 Foundation for Microsoft Windows* describes the renewal process in full detail. The *Administrator Guide* is accessible from either of these locations:

- The “View Administrator Guide” link from the SAS Software Navigator
- The Install Center at <http://support.sas.com/installcenter/>

The information below is a brief overview of the software renewal process and the part that SAS Installation Data plays in it. For detailed instructions, please see “Renewing Your SAS Software” in the *Administrator Guide*.

SAS Installation Data in the Software Order E-Mail

When SAS software is ordered, your designated installation representative receives an e-mail from SAS. This e-mail includes a single text file attachment that lists your SAS Installation Data. Use the instructions provided in the e-mail to save the data to disk.

It is recommended that you save this e-mail and attachment on your hard drive, or to another location that is backed up regularly. Without this data, you will not

be able to perform a SAS 9.1 installation. After you save the data to disk, the File option can be used in the Retrieve SAS Installation Data window during installation, to provide the disk location for obtaining this data.

End User Role: Renewing SAS Software

Note: The Renew SAS Software tool can be used to update Personal images only. For Client images, the Administrator renews your SAS software by running the update from the SAS Administrator Wizard's Maintenance Mode.

If you already have SAS software installed, the Renew SAS Software utility applies SAS Installation Data. From the Start menu, click Programs (or All Programs on Windows XP) --> SAS --> SAS 9.1 Utilities --> Renew SAS Software.

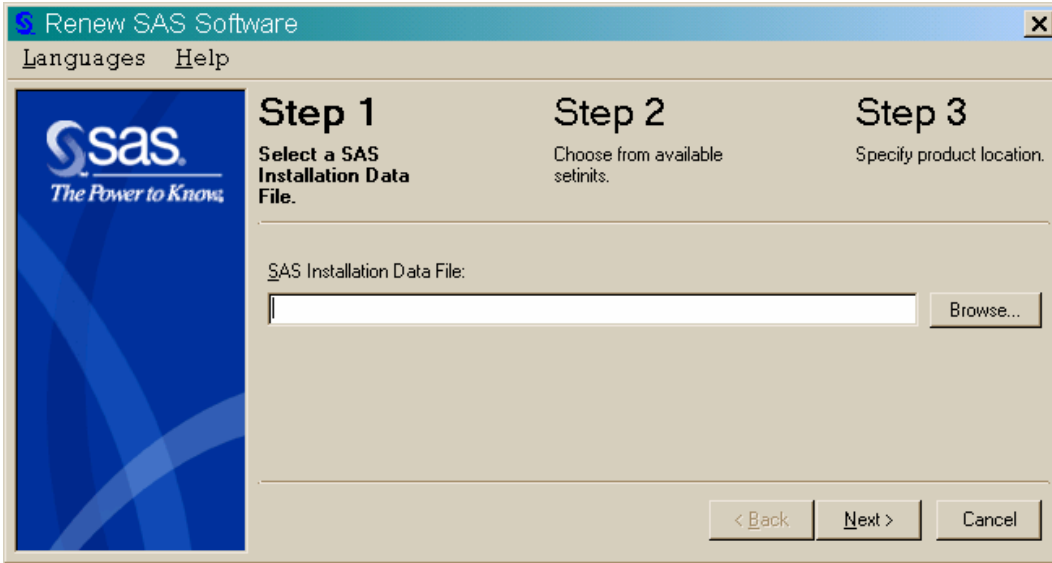
If the Renew SAS Software tool cannot be reached from the Start menu, there are two other ways to reach it:

- The tool can be located on your hard drive. Open Windows Explorer (Click on the Start button, select run from the menu and type *Explorer*). Go to the following directory: !sasroot\core\sasinst\sasrenew. Double click on sasrenew.exe to start the Renew SAS Software tool.
- The tool can also be located on the **Software Disk 1** CD, in the directory \sas\core\sasinst\sasrenew. You can run sasrenew.exe from there.

As the text at the top of the Renew SAS Software window indicates, there are three steps in renewing your SAS software:

1. Select a SAS Installation Data File
2. Choose from available SETINITs
3. Specify product location

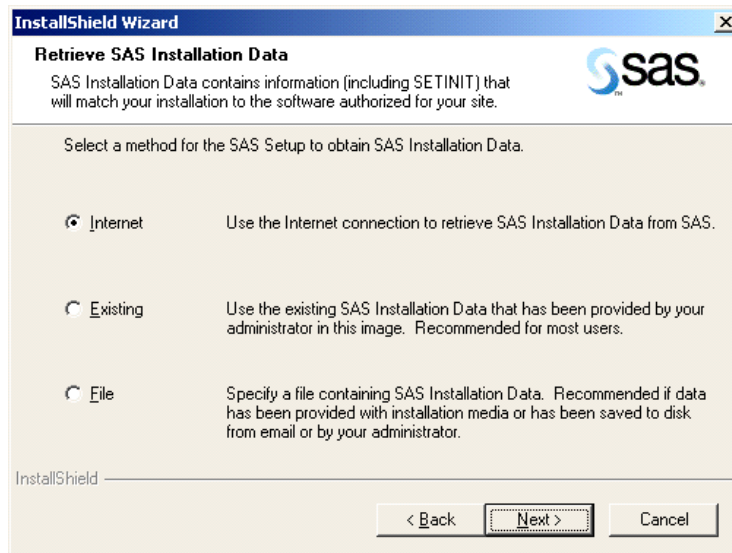
Click Next to advance through the three steps.



Administrator Role: Retrieving SAS Installation Data with the SAS Administrator Wizard

If you have not had a SAS software license before, or if you are about to install a new piece of SAS software, your SAS Installation Data will be applied when you run the SAS Administrator Wizard.

You can retrieve your SAS Installation Data from a file if you previously saved the data (received via e-mail) to disk, or it was provided with your installation media. In many versions of the SAS Administrator Wizard, SAS Installation Data can be obtained via the Internet.



While running the SAS Administrator Wizard, you will be asked to retrieve your SAS Installation Data using one of these methods. If possible, it is generally recommended that you retrieve SAS Installation Data using your Internet connection.

Administrator Role: Updating SAS Installation Data on the Server Image

If you already have a Server installation of SAS software in place, you can update the SAS Installation Data on the server image.

This process is available as part of the server maintenance procedures offered through the SAS Administrator Wizard.

From the SAS server location, find the SAW directory and double-click on `setup.exe`. After you make your selection in the window Choose Setup Language, the SAS Server Maintenance welcome window appears.

For more information about applying SAS Installation Data to the server, or any other issues related to renewing SAS software or retrieving SAS Installation Data, please see the *Administrator Guide*.

