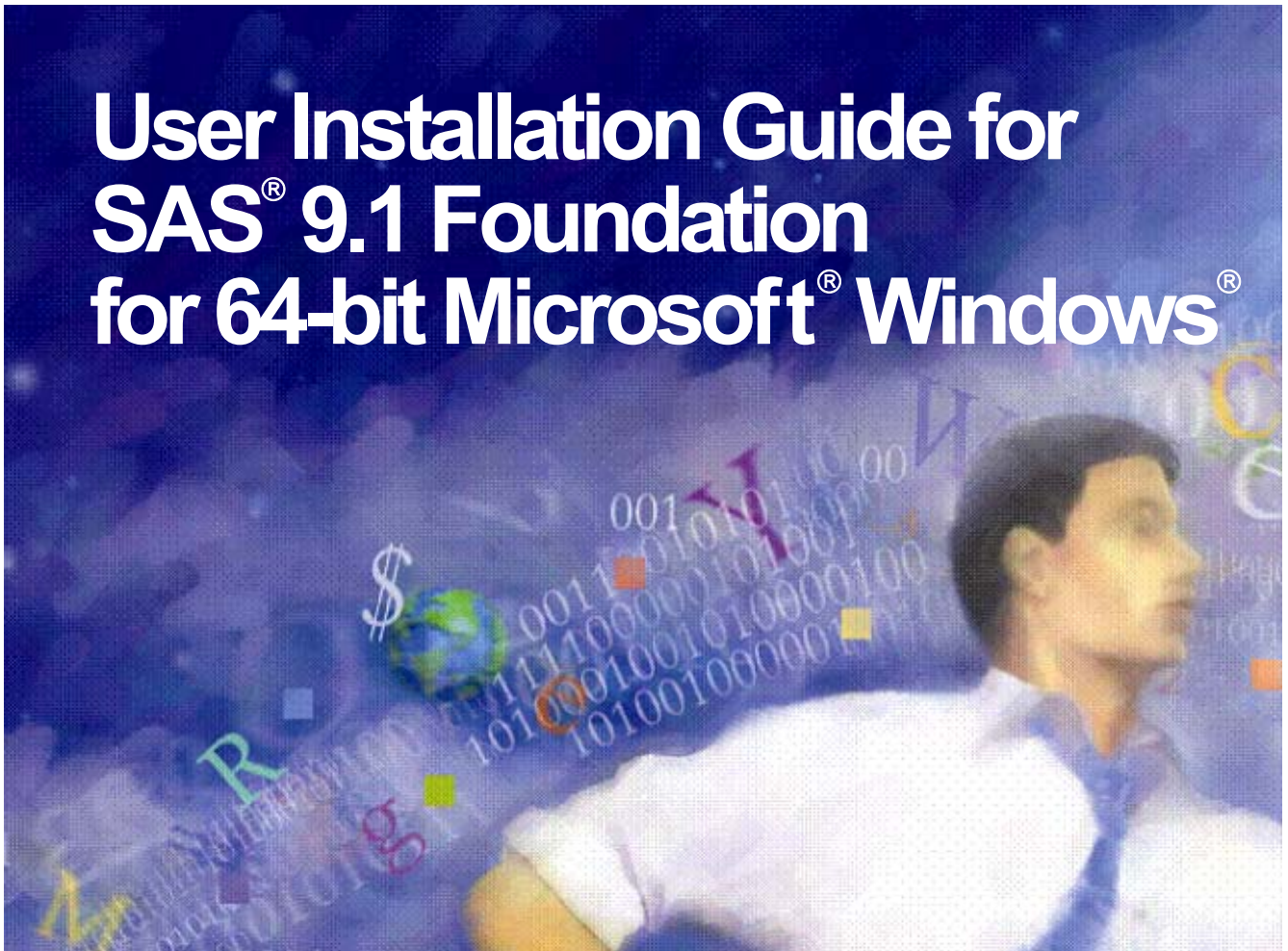




# User Installation Guide for SAS<sup>®</sup> 9.1 Foundation for 64-bit Microsoft<sup>®</sup> Windows<sup>®</sup>



## Installation Instructions

- Where to Begin
- SAS Setup Wizard
- Repair or Remove SAS Software
- Glossary

## Where to Begin

Most people who install SAS 9.1 Foundation can be considered either administrators or end users. This *User Installation Guide* is intended for end users. The instructions on the following pages will help you install SAS 9.1 Foundation.

If you need to perform a setup or other system administration tasks, please refer to the *Administrator Guide for SAS 9.1 Foundation for 64-bit Microsoft Windows*. To find configuration information and instructions for customizing the installation of specific SAS components and products, please refer to *Post-Installation Guide for SAS 9.1 Foundation for 64-bit Microsoft Windows*.

## Copyright Notice

The correct bibliographic citation for this manual is as follows: SAS Institute Inc., *User Installation Guide for SAS® 9.1 Foundation for 64-bit Microsoft® Windows®*, Cary, NC: SAS Institute Inc., 2003.

**User Installation Guide for SAS® 9.1 Foundation for 64-bit Microsoft® Windows®**, Copyright © 2003 SAS Institute Inc., Cary, NC, USA.

All rights reserved. Printed in the United States of America. No part of this publication may be reproduced, stored in a retrieval system, or transmitted, by any form or by any means, electronic, mechanical, photocopying, or otherwise, without the prior written permission of the publisher, SAS Institute, Inc. These installation instructions are copyrighted.

Limited permission is granted to store the copyrighted material in your system and display it on terminals, print only the number of copies required for use by those persons responsible for installing and supporting the SAS programming and licensed programs for which this material has been provided, and to modify the material to meet specific installation requirements. The SAS Institute copyright notice must appear on all printed versions of this material or extracts thereof and on the display medium when the material is displayed. Permission is not granted to reproduce or distribute the material except as stated above.

U.S. Government Restricted Rights Notice. Use, duplication, or disclosure of the software by the government is subject to restrictions as set forth in FAR 52.227-19 Commercial Computer Software-Restricted Rights (June 1987).

SAS Institute Inc., SAS Campus Drive, Cary, North Carolina 27513.

SAS® and all other SAS Institute Inc. product or service names are registered trademarks or trademarks of SAS Institute Inc. in the USA and other countries.

® indicates USA registration.

Certain products on this media include software developed by the Apache Software Foundation (<http://www.apache.org/>).

Certain products on this media include software developed by WebGain, Inc.

ACE™ is copyrighted by Douglas C. Schmidt and his research group at Washington University and University of California, Irvine.

Other brand and product names are trademarks of their respective companies.

# User Installation Guide for SAS 9.1 Foundation for 64-bit Microsoft Windows

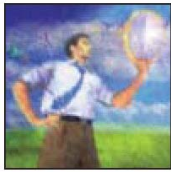
## Table of Contents

<b>WHERE TO BEGIN</b> .....	<b>2</b>
Copyright Notice.....	2
A note about your installation.....	3
Personal Installation .....	4
<b>THE SAS SETUP WIZARD FOR END USERS</b> .....	<b>4</b>
Starting the SAS Setup Wizard .....	4
<b>SAS Setup Wizard Dialogs</b> .....	<b>5</b>
Sequence of Setup Windows.....	5
SAS Setup Wizard Dialogs & Directions .....	5
Dialogs Used More than Once in Setup.....	7
<b>INSTALLING THE SAS SYSTEM VIEWER</b> .....	<b>9</b>
Starting the SAS System Viewer .....	9
<b>REPAIR OR REMOVE SAS SOFTWARE</b> .....	<b>10</b>
<b>USER INSTALLATION GLOSSARY</b> .....	<b>11</b>

### **A note about your installation**

SAS Technical Support strongly recommends that you shut down all programs, including virus-scanning programs, before proceeding with this installation. Keeping a virus-scanning program running increases the possibility that one or more reinstallations of SAS software will be necessary.

19 November 2003



## Installing SAS 9.1 Foundation for 64-bit Microsoft Windows

A Personal Installation uses the SAS Installation Wizard, SAS Setup, to install all the software you need to run on your PC.

### Personal Installation

In general, users who complete a Personal Installation of the SAS System are planning to run SAS without a server installation of SAS software in the network.

If you are installing from CDs, you are performing a Personal Installation. A Personal Installation can also be performed by using the SAS Setup Wizard from a network location created by your System Administrator.

### The SAS Setup Wizard for End Users

This section describes the steps required to install and run SAS. Users respond to the dialogs as each window is presented.

Most of the dialogs described below offer directions printed in bold text. The lines that begin with bolded words represent the quickest setup method. Dialogs that are shown indented below may not be a part of your installation.

All Setup dialogs are listed below according to the order in which SAS Setup presents them, with the exception of the dialogs that can appear more than once. These are grouped on page 7.

### Starting the SAS Setup Wizard

To start SAS Setup, complete the following three steps:

1. Insert the CD-ROM labeled “Setup Disk” into the source drive. The SAS System AutoPlay should appear if AutoPlay is enabled on your computer.

If this does not happen, or if you are running from a network location provided by your administrator, select the Run menu option from the Windows Start menu and type:

```
<source_drive>:\SETUP
```

In this context, *<source\_drive>* is the drive containing the SAS System installation media.

2. Select “Install SAS Software” from the list of options.

## **SAS Setup Wizard Dialogs**

### **Sequence of Setup Windows**

Welcome to the SAS Setup Wizard  
Retrieve SAS Installation Data  
    SAS Installation Data  
    SAS Installation Data Not Found  
    Language Selections  
    Default Language  
    Add/Remove SAS Software  
    SAS Shared Files  
Choose Destination Folder  
Specify Data Files Folder  
Specify Temporary Files Folder  
Select Components  
Start Copying Files  
    Confirm Update  
SAS Setup Complete

### **SAS Setup Wizard Dialogs & Directions**

**Read** *Welcome to the SAS Setup Wizard*

**Click** Next.

Or, click Cancel to exit the SAS Setup Wizard.

**Read** *Retrieve SAS Installation Data*

**Select** Existing, unless you plan to specify a different file, or expect to provide the SAS Installation Data later.

Most users can use the network location provided by an administrator.

However, if your SAS Installation Data is in a different location, select File to enter that location on the *SAS Installation Data File* dialog. More information on that window can be found below.

**Click** Next.

Or, click Back to view the previous screen, or click Cancel to exit Setup.

**Read** *SAS Installation Data*, if Setup displays this window.

Type the full path for your SAS Installation Data file, or click Browse to locate the directory.

If the SAS Installation Data file cannot be found, you will receive an error message.

**Click** Next

Or, click Back to view the *Retrieve SAS Installation Data* screen, or click Cancel to exit Setup.

**Read** *SAS Installation Data Not Found*, if Setup displays this window.

**Click** Okay

**Read** *Language Selections*, if Setup displays this window.  
Click **Select All** to choose all the languages that are available to you, or select **Clear All** to deselect the chosen listings.

**Click** **Next**.

Or, click **Back** to view the previous window, or click **Cancel** to exit Setup.

**Read** *Default Language*, if Setup displays this window.

This window displays all the languages chosen on the *Language Selections* window.

**Click** the box next to the language that you want to select for your default language.

**Click** **Next**.

Or, click **Back** to view the *Language Selections* window, or click **Cancel** to exit Setup.

**Read** *SAS Shared Files* if Setup displays this window.

Some files that are installed by Setup are shared between multiple SAS products and/or multiple SAS releases. Most users can use the location listed on the screen.

If you want your shared files in another folder, click **Browse**.

If you have not installed SAS before, or if you have uninstalled SAS and cleaned your Windows registry, you will be prompted for the location of these files.

**Click** **Next**.

Or, click **Back** to view the previous screen, or click **Cancel** to exit Setup.

**Read** *Choose Destination Folder*

**Click** **Next** to install SAS in the destination folder listed on the screen.

Or, click **Browse** to choose a different folder. Click **Back** to view the previous screen, or click **Cancel** to exit Setup.

**Read** *Specify Data Files Folder*

By default, the Windows user profile directory is created in the location shown in this window. If you select this default choice for the Windows directory, multiple users can use SAS on the same computer.

Personal data folders are created automatically.

**Click** **Next** to accept the default directory, or click **Browse** to specify a different directory. Click **Back** to view the *Choose Destination Location* screen, or click **Cancel** to exit Setup.

**Read** *Specify Temporary Files Folder*

As SAS processes your data, temporary files are created.

**Click** **Next** to select the folder listed on the screen as the location for these temporary files.

Or, click **Browse** to specify a different folder. Click **Back** to view the *Specify Data Files Folder* screen, or click **Cancel** to exit Setup.

**Read *Select Components***

This window displays the components that have been selected for your installation. To make changes to this list, select the components that you want to install, and deselect the components that you do not want to install.

Click **Select Licensed Software** as a quick way to select only the components that are listed in your software license.

**Click** **Next**.

Or, click **Back** to view the *Specify Temporary Files Folder* screen, or click **Cancel** to exit Setup.

**Read *Start Copying Files***

At this point in the installation, Setup has enough information to start copying the program files.

**Click** **Next** if you are satisfied with the settings.

Or, if you want to review or change any settings, click **Back** to return to the *Select Components* screen.

Click **Cancel** to exit Setup.

There are two alternatives for the final dialog in the sequence:

**Read *SAS Setup Complete*** if Setup displays this window.

At this point, Setup has installed the SAS software. If you want to launch the SAS System now, click that checkbox. If you want to view the Post-Installation Guide now, click that checkbox.

**Click** **Finish**.

**Read *SAS Setup Complete*** if Setup displays this window.

At this point, Setup has copied all the required files to your computer. However, some files could not be updated because they are in use. These will be updated automatically when you reboot your computer.

**Click** on one of the two radio buttons:

- Yes, I want to restart my computer now.
- No, I will restart my computer later.

If you choose to reboot, close all open applications and remove any floppy disks from the disk drives.

**Verify** that all virus-scanning software has been disabled after the computer restarts.

**Click** **Finish**.

**Dialogs Used More than Once in Setup**

The following three dialogs appear as needed during SAS Setup Wizard procedures:

**Read *Setup Status***

This dialog is displayed while Setup performs the requested operations. No action is required.

If you click Cancel, you will exit Setup, and the program will not be installed.

**Read *Exit Setup***

Setup can be completed later, but if you quit Setup now, the program will not be installed.

Click No to resume Setup, or click Yes to quit.

**Read *Choose Folder***

This dialog is used to browse for an available folder. Navigate through the nested folders until you find the correct one for your installation.

**Click** OK to select the folder.

Or, click Cancel to return to the previous screen.

## Installing the SAS System Viewer

There are two ways to install SAS System Viewer 9.1. As described below, the SAS System Viewer is available to users during a CD installation from the **Client-Side Components Volume 1** CD, and after an Administrator lays down the image on the server.

1. To install the SAS System Viewer from the **Client-Side Components Volume 1** CD, you need to begin with Windows Explorer. To start, place the CD in the CD-ROM drive and go to the directory `<cd-rom drive> client1cd\systemviewer`. From this location, run `SASView91.exe`.

Be aware that when the **Client-Side Components Volume 1** CD is inserted in a Windows 64-bit machine, the following error message will probably appear:

```
System Requirements
Setup does not support this operating system.
Please review the System Requirements documentation
for a list of supporting operating systems.
```

Click OK and follow the directions above.

2. For an Administrator/Personal installation, point to the directory `\SAS Client-Side Components Volume 1\ client1cd\systemviewer` and run `SASView91.exe`.

## Starting the SAS System Viewer

There are two ways to open the SAS System Viewer after it is installed:

1. Click on `Start> All Programs> SAS> SAS System Viewer 9.1`
2. From Windows Explorer, navigate to the directory `C:\Program Files (x86)\SAS\SAS System Viewer\9.1` and run `sv.exe`.

## Repair or Remove SAS Software

For an end user, the process of removing or updating SAS software works just as it does for any other Windows software. Click on My Computer, then Control Panel, and then Add/Remove Programs.

Select “SAS 9.1” from the list to perform the following tasks:

- Remove SAS from your computer
- Repair your SAS installation
- Add products to your SAS System installation
- Remove products from your SAS System installation

## User Installation Glossary

This glossary defines terms that are used in the installation documentation and terms that you may encounter during installation of SAS 9.1 Foundation. The terms are listed in alphabetic order.

AutoPlay	AutoPlay is a Microsoft Windows feature that allows the system to automatically operate a CD-ROM. When a CD is inserted into a CD-ROM drive, Windows looks for a file called <code>AUTORUN.INF</code> on the CD. If the file is found, Windows opens it and carries out its instructions, which presents the user with the SAS 9.1 menu.
Client Installation	A Client Installation uses the SAS Installation Wizard, SAS Setup, to install the software you need to run SAS in association with shared files on a network server. SAS System components are not installed on a local disk; only a few essential files are installed locally.
Personal Installation	A Personal Installation uses the SAS Installation Wizard, SAS Setup, to install all the software you need to run SAS on your PC. In general, users who complete a Personal Installation of the SAS System are planning to run SAS without a server installation of SAS software in the network.
SAS 9.1 Foundation	SAS 9.1 Foundation is the combination of Base SAS 9.1 and the server-side products that you have ordered which are installed at the same time as Base SAS 9.1.
SAS Installation Data	SAS Installation Data is required to install SAS Software. It includes your company's SETINIT and installation process customization parameters.
SAS Installation Representative	The SAS Installation Representative is a person appointed at your site who serves as the liaison between the site and SAS Institute. This person is the contact for all SAS software matters.
SAS Setup	SAS System Setup (or "Setup") is a program that guides you in the installation of your SAS System and the configuration of your SAS operating environment.
SETINIT	The SETINIT is a file of information about the software in your license. The SAS System is authorized on an annual basis. In order to run each software product, you must obtain a product authorization code from SAS Institute. This authorization information resides in the <code>SETINIT.SSS</code> file. When you install the SAS System, the SETINIT information is used to initialize the software for the current authorization period.



*The Power to Know<sup>®</sup>*

**support.sas.com**

SAS is the world leader in providing software and services that enable customers to transform data from all areas of their business into intelligence. SAS solutions help organizations make better, more informed decisions and maximize customer, supplier, and organizational relationships. For more than 25 years, SAS has been giving customers around the world The Power to Know<sup>®</sup>. Visit us at [www.sas.com](http://www.sas.com).