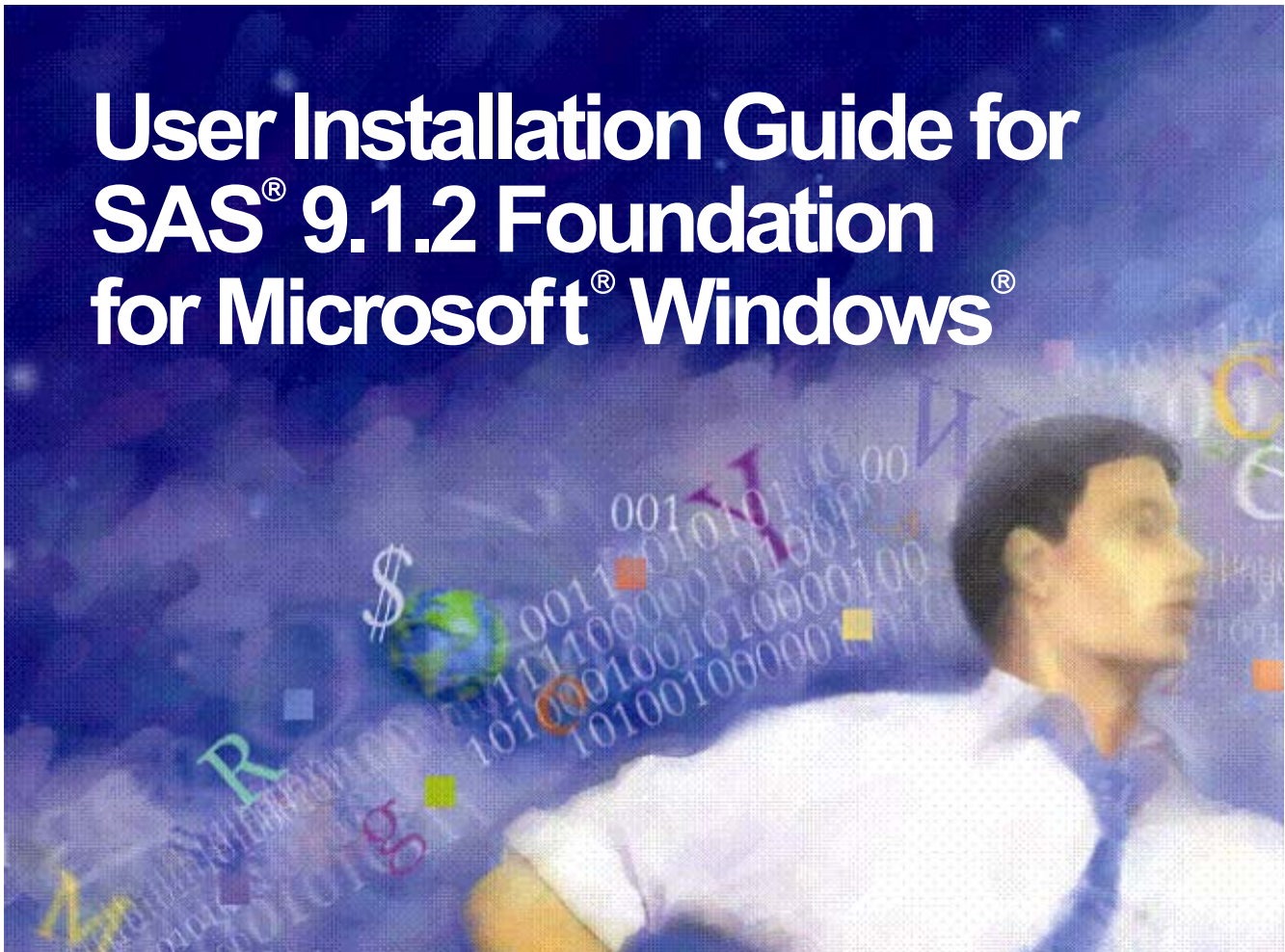


# User Installation Guide for SAS<sup>®</sup> 9.1.2 Foundation for Microsoft<sup>®</sup> Windows<sup>®</sup>



## Installation Instructions

- Where to Begin
- Installing SAS from the Setup Disk
- The System Requirements Wizard
- SAS Setup Wizard

## Copyright Notice

The correct bibliographic citation for this manual is as follows: SAS Institute Inc., User Installation Guide for SAS® 9.1.2 Foundation for Microsoft® Windows®, Cary, NC: SAS Institute Inc., 2003.

**User Installation Guide for SAS® 9.1.2 Foundation for Microsoft® Windows®**, Copyright © 2003 SAS Institute Inc., Cary, NC, USA.

All rights reserved. Printed in the United States of America. No part of this publication may be reproduced, stored in a retrieval system, or transmitted, by any form or by any means, electronic, mechanical, photocopying, or otherwise, without the prior written permission of the publisher, SAS Institute, Inc. These installation instructions are copyrighted.

Limited permission is granted to store the copyrighted material in your system and display it on terminals, print only the number of copies required for use by those persons responsible for installing and supporting the SAS programming and licensed programs for which this material has been provided, and to modify the material to meet specific installation requirements. The SAS Institute copyright notice must appear on all printed versions of this material or extracts thereof and on the display medium when the material is displayed. Permission is not granted to reproduce or distribute the material except as stated above.

U.S. Government Restricted Rights Notice. Use, duplication, or disclosure of the software by the government is subject to restrictions as set forth in FAR 52.227-19 Commercial Computer Software-Restricted Rights (June 1987).

SAS Institute Inc., SAS Campus Drive, Cary, North Carolina 27513.

SAS® and all other SAS Institute Inc. product or service names are registered trademarks or trademarks of SAS Institute Inc. in the USA and other countries.

® indicates USA registration.

Certain products on this media include software developed by the Apache Software Foundation (<http://www.apache.org/>).

Certain products on this media include software developed by WebGain, Inc.

ACE™ is copyrighted by Douglas C. Schmidt and his research group at Washington University and University of California, Irvine.

Other brand and product names are trademarks of their respective companies.

# User Installation Guide for SAS<sup>®</sup> 9.1.2 Foundation for Microsoft Windows

## Table of Contents

Copyright Notice.....	2
About This Guide.....	4
<b>WHERE TO BEGIN.....</b>	<b>5</b>
<b>Installing SAS 9.1.2 Foundation for Microsoft Windows.....</b>	<b>5</b>
Remove Old SAS 9.1 Software.....	5
Close all Programs Prior to Installation.....	5
Using the SAS Installation Log.....	5
<b>The SAS Software Navigator.....</b>	<b>5</b>
<b>Client and Personal Installations.....</b>	<b>6</b>
Client Installation.....	6
Personal Installation.....	6
<b>Documentation for Installing SAS 9.1.2.....</b>	<b>7</b>
Accessing the Documentation.....	7
Installation Qualification Tool.....	7
<b>Installing SAS from the SAS Setup Disk.....</b>	<b>7</b>
Run the System Requirements Wizard.....	8
Run the SAS Setup Wizard.....	9
Launch from the Media.....	9
<b>THE SYSTEM REQUIREMENTS WIZARD FOR USERS.....</b>	<b>10</b>
Starting the System Requirements Wizard.....	10
Updating to Minimum System Requirements.....	10
<b>System Requirements Wizard Dialogs.....</b>	<b>11</b>
Sequence of System Requirements Wizard Windows.....	11
System Requirements Wizard Dialogs & Directions.....	11
<b>THE SAS SETUP WIZARD FOR END USERS.....</b>	<b>13</b>
Starting the SAS Setup Wizard.....	13
<b>SAS Setup Wizard Dialogs.....</b>	<b>13</b>
Sequence of Setup Windows.....	13
SAS Setup Wizard Dialogs & Directions.....	14
Dialogs Used More than Once in Setup.....	24
<b>INSTALLING THE SAS SYSTEM VIEWER.....</b>	<b>25</b>
Starting the SAS System Viewer.....	25

14 April 2004

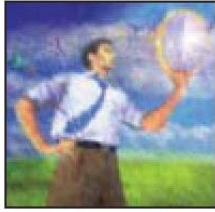
<b>REMOVING SAS SOFTWARE .....</b>	<b>26</b>
<b>USER INSTALLATION GLOSSARY .....</b>	<b>27</b>

## About This Guide

This document provides user installation instructions for SAS 9.1.2 Foundation, which is made up of server-side Base SAS and a variety of server-side SAS products (the exact products vary by customer). Information about the installation of mid-tier and client-side products are available from your SAS Software Navigator.

If you need to perform a setup or other system administration tasks, please refer to the *Administrator Guide for SAS 9.1.2 Foundation for Microsoft Windows*. To find configuration information and instructions for customizing the installation of specific SAS components and products, please refer to *Post-Installation Guide for SAS 9.1.2 Foundation for Microsoft Windows*.

The server-side configuration instructions contained in this document are for the configuration of a generic SAS server. If you want to configure your server for more specific functions, such as a Metadata Server, Workspace Server, OLAP Server, or Stored Process Server, please refer to the *SAS 9.1.2 Intelligence Architecture: Planning and Administration Guide* located at <http://support.sas.com/912administration>.



## Where to Begin

Most people who install the SAS 9.1.2 Foundation can be considered either administrators or end users. This *User Installation Guide* is intended for end users who will install SAS 9.1.2 Foundation.

## Installing SAS 9.1.2 Foundation for Microsoft Windows

If the System Requirements have not been updated by a System Administrator, users can update their System Requirements, as described in “[The System Requirements Wizard for Users](#)” on page 10.

## Remove Old SAS 9.1 Software

If an older version of SAS 9.1 has already been installed on your computer, you will need to remove it before you install SAS 9.1.2. Go to Start --> Settings --> Control Panel --> Add/Remove Programs.



If you are prompted to remove SAS Shared Files, respond `Yes to All`.

## Close all Programs Prior to Installation

SAS Technical Support strongly recommends that you shut down all programs, including virus-scanning programs, before proceeding with this installation. Keeping a virus protection program running increases the possibility that one or more reinstallations of SAS software will be necessary.

## Using the SAS Log

If you view the SAS log (as a part of the installation log or separate from the installation), please note that SAS 9.1.2 and SAS 9.1.2 Foundation are displayed in the log as SAS 9.1 TS1M2.

## The SAS Software Navigator

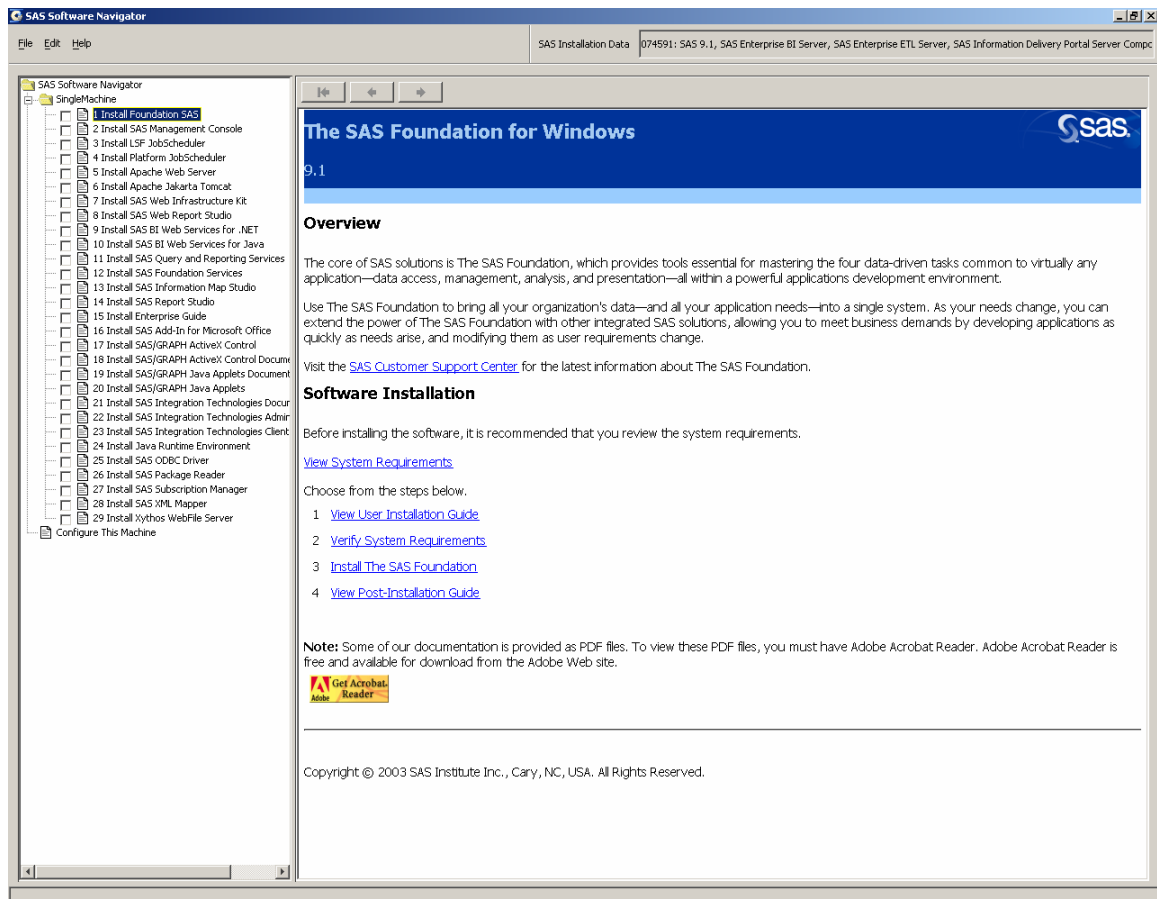
The SAS Software Navigator is designed for enterprise deployment across a multiplatform and/or multi-machine environment.

**Note:** To install SAS 9.1.2 Foundation in its simplest form by bypassing the SAS Software Navigator, you can run the installation from the **SAS Setup Disk**, as described in “[Installing SAS from the SAS Setup Disk](#)” on page 7.

When SAS Setup is run from a server or the SAS Software Depot, the SAS Software Navigator is the first window to appear. The SAS Software Navigator serves as a launch pad for interactive use of SAS Setup and the System Requirements Wizard mentioned above.

In addition to supporting these installation tools, the SAS Software Navigator provides access to online installation and configuration documentation, installation qualification tests, the Install Center, and SAS Technical Support.

The SAS Software Navigator was written in Java, to take advantage of the platform independence offered by that programming language.



## Client and Personal Installations

SAS 9.1.2 Foundation can be installed in two different scenarios, Client Installation and Personal Installation.

### Client Installation

A Client installation uses the SAS Installation Wizard, SAS Setup, to install the software you need to run SAS in association with shared files on a network server.

Before a client installation can be performed, a System Administrator creates a server for clients, as described in the *Administrator Guide for SAS 9.1.2 Foundation for Microsoft Windows*. This method allows a majority of the files used by SAS to be stored in a central location and shared by multiple clients.

### Personal Installation

A Personal Installation uses the SAS Installation Wizard, SAS Setup, to install all the software you need to run SAS on your PC. In general, users who complete a Personal Installation of the

SAS System are planning to run SAS without a server installation of SAS software in the network.

If you are installing from CDs, you are performing a Personal Installation. A Personal Installation can also be performed by using the SAS Setup Wizard from a network location created by your System Administrator.

## ***Documentation for Installing SAS 9.1.2***

In SAS 9.1.2 Foundation, installation documentation is provided in online and hard copy formats.

### **Accessing the Documentation**

Online, the documents can be found in the SAS Software Navigator and on the **SAS Setup Disk** in printable Adobe PDF format. The documents are available in hard copy form in the Installation Kit. The materials are divided into three documents:

- The *User Installation Guide* is accessible from the SAS Software Navigator by selecting the View User Installation Guide option.
- The *System Requirements* document can be reviewed before or after you run the System Requirements Wizard. The document can be accessed from the SAS Software Navigator by selecting the View System Requirements option.
- The *Post-Installation Guide* is intended for anyone who needs to tune the behavior of specific SAS products or solutions after installation. This document is accessible from the SAS Software Navigator by selecting the View Post-Installation Guide option.

For updated versions of these materials and the printed documentation included in your Installation Kit, you can review the contents of the SAS Install Center. This is the SAS 9.1.2 documentation repository. It is available by choosing the Visit the SAS Customer Support Center option, or directly from your browser:

<http://support.sas.com/documentation/installcenter/>

Install Center offers links to other sources of installation-related information as well.

### **Installation Qualification Tool**

The Installation Qualification Tool can be used to validate the SAS System installation image. For more information about this tool, please see the *SAS Installation Qualification Tools User Guide*.

After SAS is installed, both the Installation Qualification Tool and its User Guide are available from Start > Programs (or All Programs on WinXP) > SAS > SAS 9.1 Utilities.

## ***Installing SAS from the SAS Setup Disk***

While the SAS Software Navigator was designed as the starting point for an enterprise deployment of SAS 9.1.2 Foundation, the **SAS Setup Disk** can be used for an installation of SAS 9.1.2 Foundation in its simplest form.

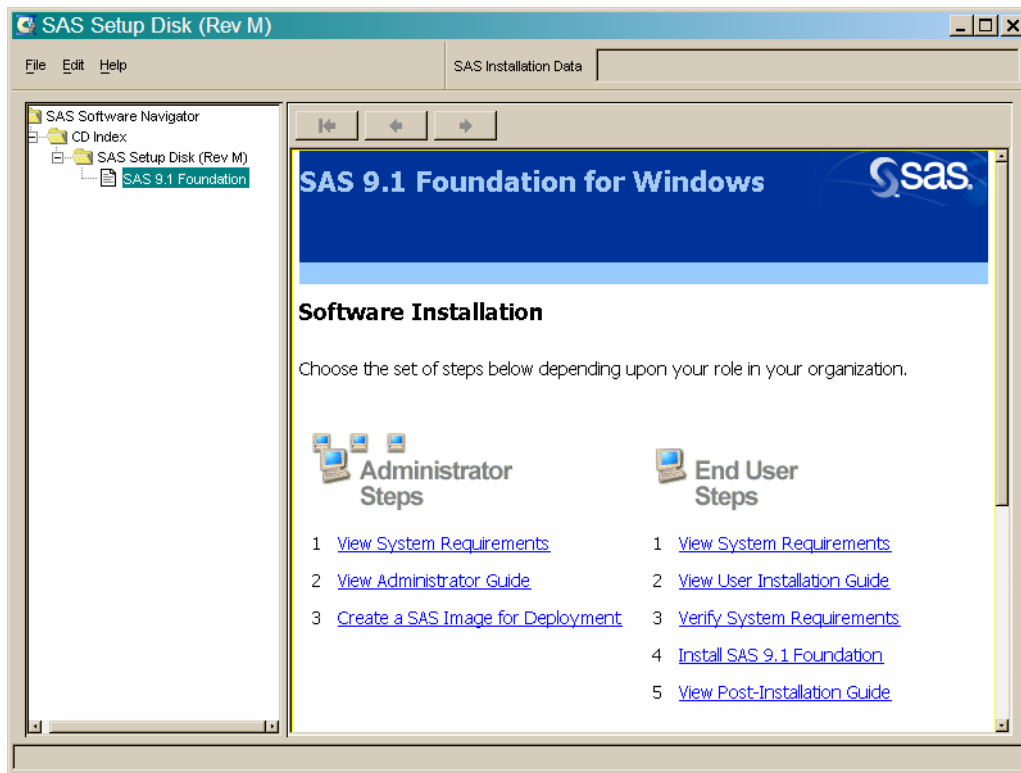
If you want to install SAS 9.1.2 Foundation using the **SAS Setup Disk**, follow these steps:

1. Make sure that you are logged in as the Administrator.

2. Locate the **SAS Setup Disk** in Media Storage, Division 8 of the Installation Kit. It is in Section 802, Server Media.
3. If the SAS Software Navigator is running from the **SAS Software Navigator Disk** (distributed in Section 801, Installation and Configuration Media of the Installation Kit), close this application by clicking the ‘X’ in the upper right-hand corner. In order for the **SAS Setup Disk** to autoplay, the SAS Software Navigator must be closed.
4. Insert the **SAS Setup Disk** in your CD-ROM drive.

The SAS Software Navigator will launch from the **SAS Setup Disk**. This instance of the SAS Software Navigator is limited to just the SAS Foundation software.

**Note:** If the SAS Software Navigator does not launch, then use `setup.exe` from the root of the CD as described in [Launch from the Media](#) on page 9.



The right pane of the limited SAS Software Navigator displays links that you need to continue your installation. Under the heading End User Steps, there are five links, including “Verify System Requirements” and “Install SAS 9.1 Foundation.”

While you can proceed by selecting either of these links, “Verify System Requirements” is recommended. This choice runs a tool that installs system updates if they are needed. If you begin an installation on a system that does not meet the minimum system requirements, the installation process will not continue until this tool runs.

## Run the System Requirements Wizard

To use this tool, click on “Verify System Requirements” under the End User Steps. If you are asked to choose a Setup language, select one from the menu in the window.

For descriptions of the remaining steps in the SRW, please see the chapter “[The System Requirements Wizard for Users](#)” on page 10.

The System Requirements Wizard indicates if updates are required, and if so, which products will be installed. If your computer needs updated software, a reboot may be required.

## Run the SAS Setup Wizard

After the System Requirements Wizard runs, you can perform your installation of SAS 9.1.2 Foundation.

1. Return to the SAS Software Navigator.
2. Under *End User Steps*, click on *Install SAS 9.1 Foundation*.
3. SAS Setup begins with a *Welcome* screen. Click *Next* on this screen.
4. Retrieve your SAS Installation Data file from the Internet or from a File.

Follow the steps in the window dialogs presented by SAS Setup to complete your installation of SAS 9.1.2 Foundation.

For descriptions of the remaining steps in SAS Setup, please see the chapter “[The SAS Setup Wizard for End Users](#)” on page 18.

## Launch from the Media

If you want to bypass the SAS Software Navigator entirely, you can launch the installation tools directly from the media. This requires that you either exit the SSN or turn off the autoplay feature of your operating system.

To verify the system requirements directly from the media, follow these steps to launch the System Requirements Wizard:

1. Use the same **SAS Setup Disk** and click on *Start >Run*.
2. Browse to your CD-ROM drive.
3. Go to the `/srw` folder and double click on `setup.exe`.

**Note:** You must click on `setup` in the `/srw` folder or the SAS Software Navigator installation will be launched.

For a complete description of the System Requirements Wizard, please see the chapter “[The System Requirements Wizard for Users](#)” on page 10.

To launch an installation of SAS 9.1.2 Foundation from the media, follow the steps below:

1. Use the same **SAS Setup Disk** and click on *Start >Run*.
2. Browse to your CD-ROM drive.
3. Go to the `/sas` folder and double-click on `setup.exe`.

**Note:** You must click on `setup` in the `/sas` folder or the SAS Software Navigator installation will be launched.

The rest of a SAS Setup process run from the media is the same as an installation launched from the limited SAS Software Navigator. For more information, please see [Run the SAS Setup Wizard](#) on page 9.

## The System Requirements Wizard for Users

The System Requirements Wizard makes sure that the minimum system requirements are installed on your computer before the SAS System is installed.

The System Requirements Wizard may update system components that are part of the operating system. Updating these components to appropriate levels is an important part of a successful SAS System installation.

It is possible that some of the system components that need to be updated by the System Requirements Wizard will be in use by the operating system. Unfortunately, this situation will require a reboot of the computer to properly update the system components in use.

Closing down all other running applications, **including virus-scanning programs**, before starting the System Requirements Wizard can keep the number of required reboots to a minimum. The number of reboots that will be required can vary from computer to computer, since it is determined by the level of the system components installed on the computer when the System Requirements Wizard is run.

### Starting the System Requirements Wizard

To start the System Requirements Wizard, complete the following steps:

1. Insert the CD-ROM labeled “Setup Disk” into the source drive. The SAS Software Navigator window appears.

If this does not happen, or if you are running from a network location provided by your administrator, select the Run menu option from the Windows Start menu and type:

```
<source_drive>:\SETUP
```

In this context, <source\_drive> is the drive containing the SAS System installation media.

2. Select “Verify System Requirements” from the list of options.

### Updating to Minimum System Requirements

After starting the System Requirements Wizard, follow these steps:

1. Carefully read the Welcome dialog and then select Next.
2. The next window displays a complete list of all system components that need to be updated by the System Requirements Wizard. Review the list and click Next.

If the computer already satisfies the minimum system requirements, a dialog appears to indicate that no updates are required for this computer.

3. The update process begins for any system components listed in step 2. Some system components may require a reboot of the computer. Carefully read the instructions on the reboot dialog.
  - If you elect to reboot, the System Requirements Wizard restarts automatically following the logon process.

- If you elect not to reboot, the System Requirements Wizard exits. Run the System Requirements Wizard when you are ready to continue updating the system components.
4. When all system components have been updated, a final dialog appears stating that the computer has been updated to the minimum system requirements for the SAS System.

## System Requirements Wizard Dialogs

This section describes the steps required to update your system to the minimum system requirements for the software.

Users run the System Requirements Wizard and respond to the dialogs as each window is presented. Most of the dialogs described below offer directions printed here in bold text. These represent the quickest method for updating your system.

## Sequence of System Requirements Wizard Windows

These are the names of the dialog windows in the System Requirements Wizard. Indented dialog titles represent windows that may not be a part of your installation.

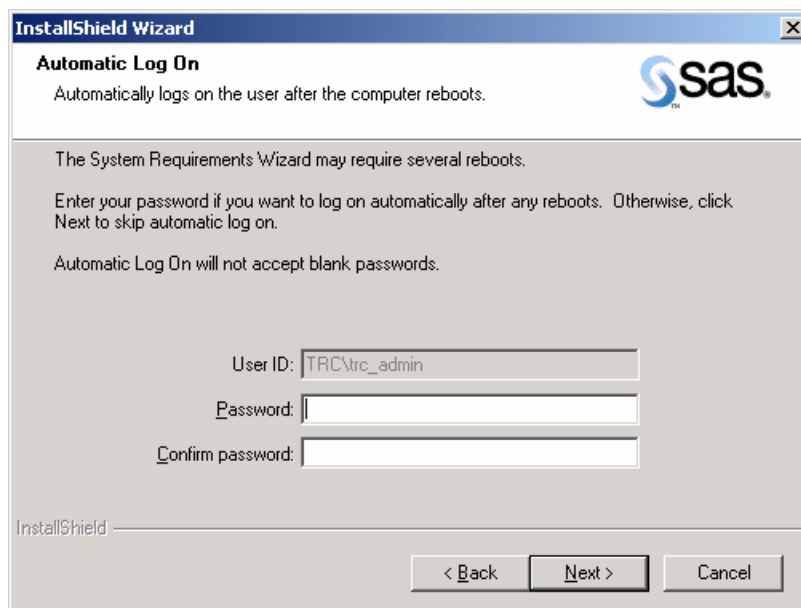
Welcome to the System Requirements Wizard  
 Automatic Log On  
     System Components Update  
     Restarting Windows  
     System Update Not Required  
 System Update Finished

## System Requirements Wizard Dialogs & Directions

**Read** *Welcome to the System Requirements Wizard*

**Click** Next.

Or, click Cancel to exit the SAS Requirements Wizard.



**Read *Automatic Log On***

The System Requirements Wizard may require several reboots. If you want to log on automatically after any reboots, enter your password in the Password field. This is optional, and you can click Next to skip automatic log on. If you enter a password, you will need to enter it again in the Confirm password field.

**Click Next.**

Or, click Back to view the *Welcome to the System Requirements Wizard* window, or click Cancel to exit the System Requirements Wizard.

**Read *System Components Update*** if the SRW displays this window

This window displays the names of the system components that will be updated on your system.

**Click Next.**

Or, click Back to view the *Automatic Log On* window, or click Cancel to exit the System Requirements Wizard.

**Read *Restarting Windows*** if the SRW displays this window

This window displays the names of the system components that have been updated on your system, and indicates that your computer must be rebooted. SAS recommends that you reboot your computer now.

**Click** on one of the two radio buttons:

- Yes, I want to restart my computer now.
- No, I will restart my computer later.

If you choose to reboot, close all open applications and remove any floppy disks from the disk drives.

**Verify** that all virus-scanning software has been disabled after the computer restarts. Setup will resume when the computer restarts. If Setup does not resume after the computer reboots, restart Setup from the SAS Software Navigator.

**Click Finish.**

**Read *System Update Not Required*** if the SRW displays this window

This window indicates that the SRW has verified that your system already meets the minimum system requirements for the selected software.

**Click Finish.**

**Read *System Update Finished***

This dialog indicates that the System Requirements Wizard has updated your system.

**Click Finish.**

# The SAS Setup Wizard for End Users

This section describes the steps required to install and run SAS. Users respond to the dialogs as each window is presented.

Most of the dialogs described below offer directions printed in bold text. The lines that begin with bolded words represent the quickest setup method. Dialogs that are shown indented below may not be a part of your installation.

All Setup dialogs are listed below according to the order in which SAS Setup presents them, with the exception of the dialogs that can appear more than once. These are grouped on page 24.

## Starting the SAS Setup Wizard

To start SAS Setup, complete the following three steps:

1. Insert the CD-ROM labeled **SAS Setup Disk** into the source drive. The SAS Software Navigator window appears.

If this does not happen, or if you are running from a network location provided by your administrator, select the Run menu option from the Windows Start menu and type:

```
<source_drive>:\SETUP
```

In this context, *<source\_drive>* is the drive containing the SAS System installation media.

2. If the “Choose Setup Language” window appears, click OK to select the highlighted language for the Setup dialogs.

You may also click on the pull-down menu to view other language choices, or click Cancel to exit.

**Note:** This dialog will not be presented more than once when you run Setup programs from within the SAS Software Navigator. The language for those Setup dialogs will be the same as the one chosen for the SAS Software Navigator itself.

3. Select “Install SAS Software” from the list of options.

## SAS Setup Wizard Dialogs

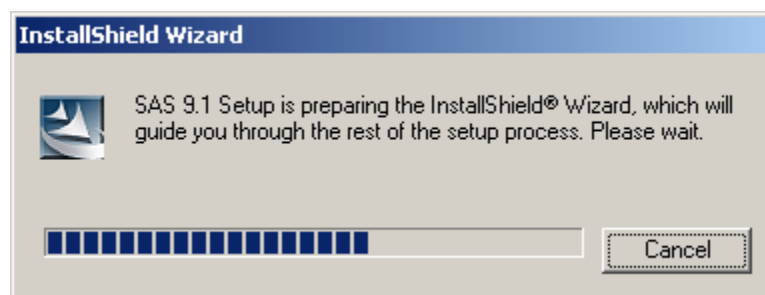
### Sequence of Setup Windows

Indented dialog titles represent windows that may not be a part of your installation.

- InstallShield Initialization Dialog
  - Choose Setup Language
- Welcome to the SAS Setup Wizard
  - System Requirements Check
  - Retrieve SAS Installation Data
  - Security Warning
  - Retrieve SAS Installation Data from the Internet
  - Unable to Download Data

- SAS Installation Data
- SAS Installation Data Retrieved
- SAS Installation Data Not Found
- Language Selections
- Default Language
- SAS Shared Files
- Choose Destination Folder
- Specify Data Files Folder
- Specify Temporary Files Folder
- Select Components
- Start Copying Files
- Confirm Update
- SAS Setup Complete

## SAS Setup Wizard Dialogs & Directions



When you select SAS Setup, the InstallShield Initialization Dialog displays to indicate that Setup has begun.  
 SAS Setup prepares the InstallShield Wizard, as shown in the progress bar.  
 Or, click Cancel to exit the SAS Setup Wizard.



**Read** *Welcome to the SAS Setup Wizard*  
**Click** Next.  
 Or, click Cancel to exit the SAS Setup Wizard.

**Read** *System Requirements Check*, if Setup displays this window.

**Click** the checkbox next to Run System Requirements Wizard.

**Click** Finish to run the System Requirements Wizard.

For more information on the System Requirements Wizard, please refer to page 10.

After the System Requirements Wizard updates your system, you can restart the SAS installation.

Or, click Back to view the *Welcome to the SAS Setup Wizard* window again, or click Cancel to exit Setup

While there can be up to three retrieval methods displayed on the next window “Retrieve SAS Installation Data,” your window may not display all three options.

If you are running from installation media such as a CD, the “Existing” option will not be available.

The “Internet” option may not be available in all versions of SAS Setup. If this method is unavailable, use one of the other two options. If your menu does include the “Internet” option, note that this method requires Internet access to complete the process.

If you are installing from the **SAS Software Navigator** Disk or the SAS Software Depot created by your administrator, SAS Installation Data will have been retrieved earlier. Depending on your installation type, your next window will be either “SAS Installation Data” on page 18 or “Language Selections” on page 18.

SAS Installation Data (SID) contains license information and installation scripts that customize the installation for your site. SAS Installation Data is sent to your SAS Installation Representative in an e-mail in the form of a text file attachment.

The name of your SAS Installation Representative is listed in the SAS Installation Kit under the SAS Order Information tab on the SAS Order Information page. Select File from the “Retrieve SAS Installation Data” window if you received the SID as a text (.txt) file.

Alternatively, you can select Internet and enter the SAS Installation Key and the Order number. This method retrieves the latest SID from the Internet and applies it to your SAS installation software.



**Read** *Retrieve SAS Installation Data*, if Setup displays this window.

Click on one of the radio buttons to pick the method that the SAS Setup Wizard will use to obtain the SAS Installation Data file. There will be up to three radio buttons available:

- Internet
- Existing
- File

The SAS Installation Data file contains information (including SETINIT) about the SAS software that has been prepared for your site.

**Select** “Existing,” unless you plan to specify a different file, or expect to provide the SAS Installation Data later.

Most users can use the network location provided by an administrator. However, if your SAS Installation Data has been placed in a different location, select “File” to enter that location on the *SAS Installation Data File* dialog. More information on that window can be found below.

**Click** Next.

Or, click Back to view the previous window, or click Cancel to exit Setup.

**Read** the security warning, if Setup displays this window.

**Click** yes.

Or, click Back to view the *Retrieve SAS Installation Data* window, or click Cancel to exit Setup.

The screenshot shows a window titled "InstallShield Wizard" with the subtitle "Retrieve SAS Installation Data from the Internet". The window contains the SAS logo in the top right. Below the title bar, there is a text box with the instruction: "To download SAS Installation Data, enter the SAS Installation Key and Order Number as presented in either the Transmittal Letter or the SAS Software Order e-mail." Below this are two input fields: "SAS Installation Key:" with three small boxes separated by dots, and "Order Number:" with a single larger box. Below these are two checkboxes: "Save a copy of SAS Installation Data to disk" (unchecked) and "Exit after saving" (unchecked). Under the first checkbox is a text box containing the path "C:\Documents and Settings\sasmik\My Documents\SAS Installation" and a "Browse..." button. At the bottom of the window are three buttons: "< Back", "Next >", and "Cancel".

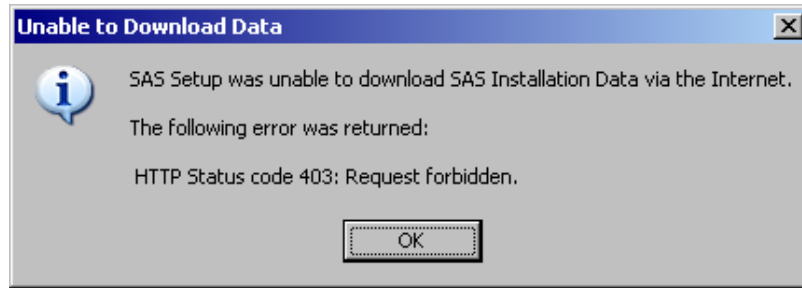
**Read** *Retrieve SAS Installation Data from the Internet*, if Setup displays this window.

**Enter** the SAS Installation Key and the Order number in their respective fields. Your SAS Installation Key and Order Number are both listed in your SAS Order Information Letter in the Installation Kit, and in the SAS Software Order Number e-mail.

If you want to save a copy of the SAS Installation Data file to disk, check the box to select that operation. You can select the displayed path name or browse for another file location. If you want to exit after saving, check the box to select that option.

**Click** Next.

Or, click Back to view the *Retrieve SAS Installation Data* window, or click Cancel to exit SAS Setup.

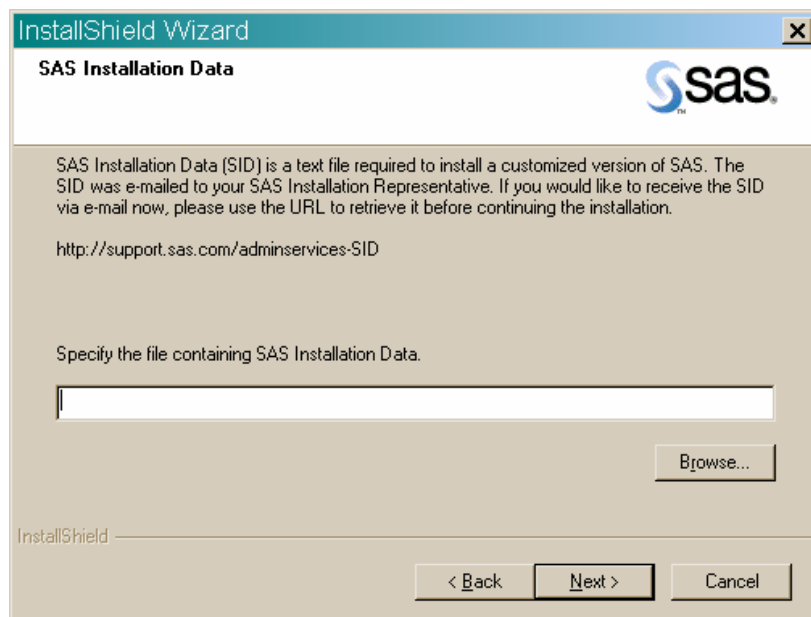


**Read** *Unable to Download Data*, if Setup displays this window. Contact your SAS Installation Representative to obtain the SAS Installation Data file. Run the installation again and select File instead of Internet **Click OK**.

In the case of ongoing trouble with SID information, go to one of the following links to request that SAS Installation Data be resent via e-mail:

[https://www3.sas.com/apps/cpi/admincenter\\_checkoptions.jsp?admin\\_option=RsndSID](https://www3.sas.com/apps/cpi/admincenter_checkoptions.jsp?admin_option=RsndSID)

<http://support.sas.com/documentation/installcenter/>



**Read** *SAS Installation Data*, if Setup displays this window.

Type the full path for your SAS Installation Data file, or click **Browse** to locate the directory.

If the SAS Installation Data file cannot be found, you will receive an error message.

**Click** **Next**

Or, click **Back** to view the previous window, or click **Cancel** to exit Setup.

**Read** *SAS Installation Data Retrieved*, if Setup displays this window.

Make sure that the licensed software listed in the window matches the licensed software listed on your Transmittal Letter.

**Click** **Next**

Or, click **Back** to view the previous window, or click **Cancel** to exit Setup.

**Read** *SAS Installation Data Not Found*, if Setup displays this window.

Contact your SAS Installation Representative to obtain the SAS Installation Data file.

**Click** **Okay**



**Read** *Language Selections*, if Setup displays this window.

Click **Select All** to choose all the languages that are available to you, or select **Clear All** to deselect the chosen listings.

**Click** **Next**.

Or, click **Back** to view the previous window, or click **Cancel** to exit Setup.

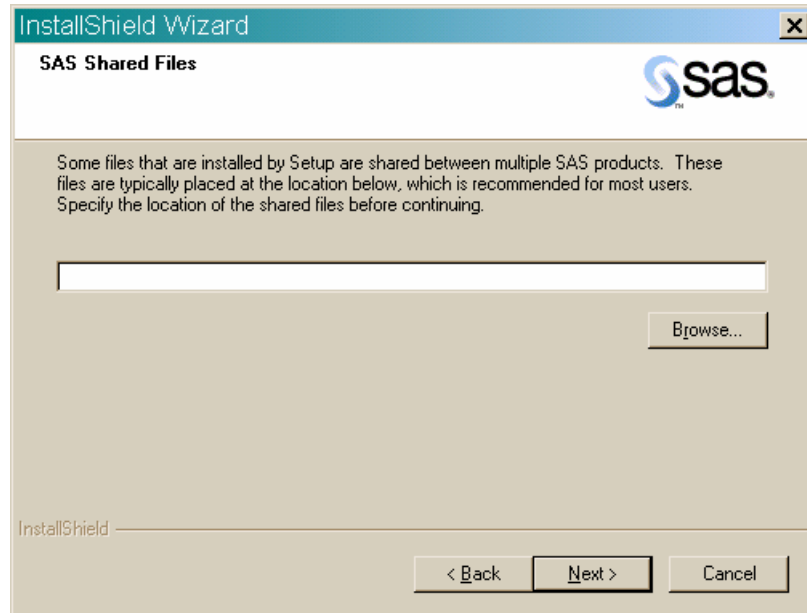
**Read** *Default Language*, if Setup displays this window.

This window displays all the languages chosen on the *Language Selections* window.

**Click** the box next to the language that you want to select for your default language.

**Click** **Next**.

Or, click **Back** to view the *Language Selections* window, or click **Cancel** to exit Setup.



**Read *SAS Shared Files*** if Setup displays this window.

Some files that are installed by Setup are shared between multiple SAS products and/or multiple SAS releases. Most users can use the location listed on the screen.

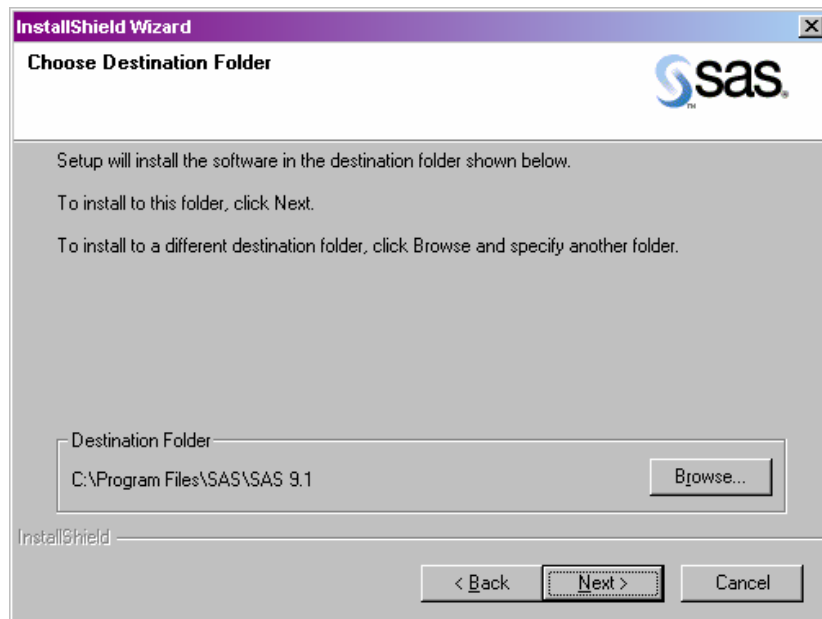
If you want your shared files in another folder, click **Browse**.

If you have not installed SAS before, or if you have uninstalled SAS and cleaned your Windows registry, you will be prompted for the location of these files.

**Note:** If Version 8, Release 8.1, Release 8.2, or SAS 9 is installed on your system, the installation of SAS 9.1.2 will overwrite some earlier shared components. Your Version 8, Release 8.1 Release 8.2, or SAS 9 production system will then contain SAS 9.1.2 functionality.

**Click Next.**

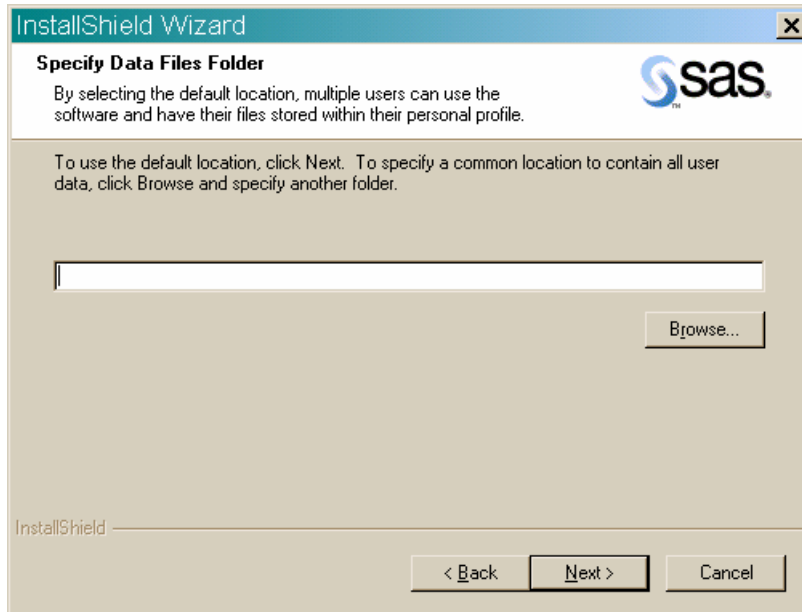
Or, click **Back** to view the previous window, or click **Cancel** to exit Setup.



**Read** *Choose Destination Folder*

**Click** Next to install SAS in the destination folder listed on the screen.

Or, click Browse to choose a different folder. Click Back to view the previous window, or click Cancel to exit Setup.

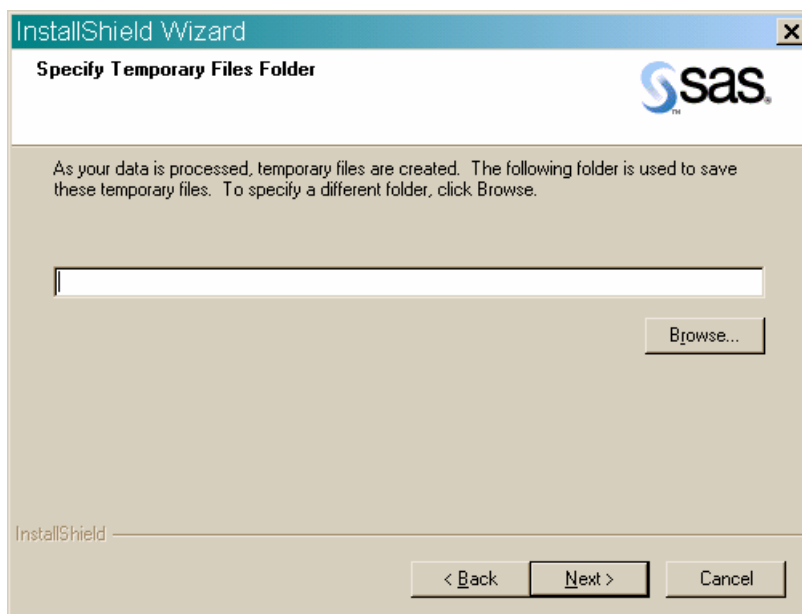


**Read** *Specify Data Files Folder*

By default, the Windows user profile directory is created in the location shown in this window. If you select this default choice for the Windows directory, multiple users can use SAS on the same computer.

Personal data folders are created automatically.

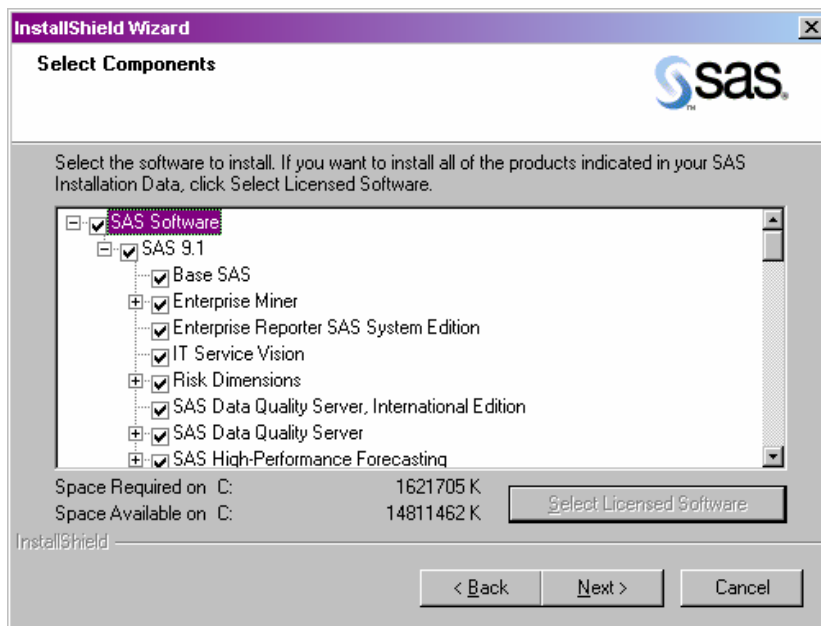
**Click** Next to accept the default directory, or click Browse to specify a different directory. Click Back to view the *Choose Destination Location* window, or click Cancel to exit Setup.



**Read *Specify Temporary Files Folder***

As SAS processes your data, temporary files are created.

**Click** Next to select the folder listed on the screen as the location for these temporary files. Or, click Browse to specify a different folder. Click Back to view the *Specify Data Files Folder* window, or click Cancel to exit Setup.



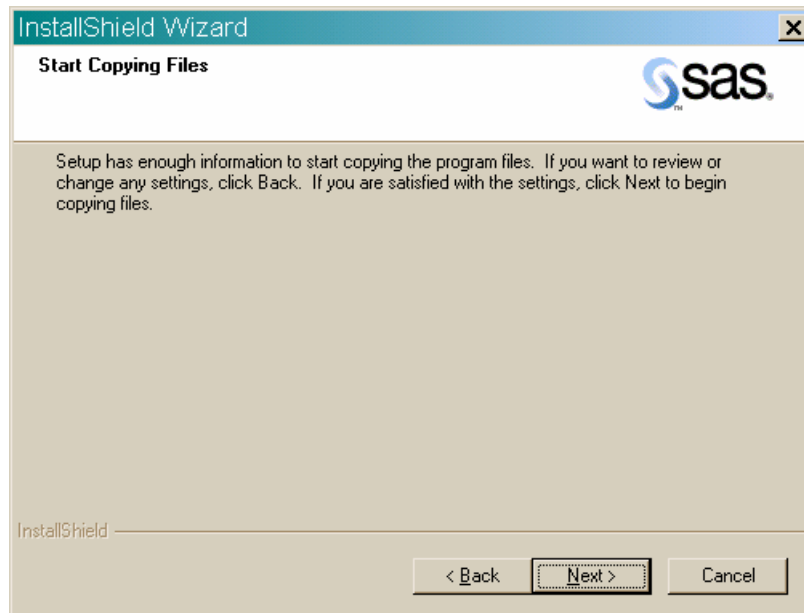
**Read *Select Components***

This window displays the components that have been selected for your installation. To make changes to this list, select the components that you want to install, and deselect the components that you do not want to install.

Click Select Licensed Software as a quick way to select only the components that are listed in your software license.

**Click** Next.

Or, click Back to view the *Specify Temporary Files Folder* window, or click Cancel to exit Setup.



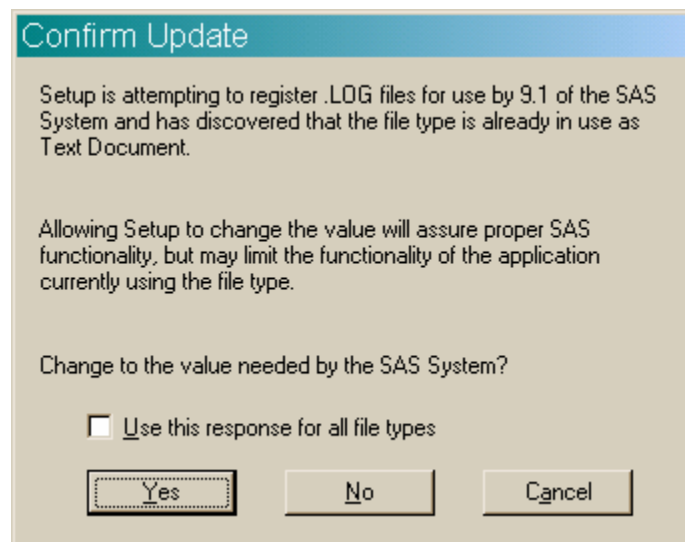
**Read *Start Copying Files***

At this point in the installation, Setup has enough information to start copying the program files.

**Click** Next if you are satisfied with the settings.

Or, if you want to review or change any settings, click Back to return to the *Select Components* window.

Click Cancel to exit Setup.



**Read *Confirm Update*** if Setup displays this window.

This window appears when Setup finds a file extension, such as .LOG, that is already used by another application. Setup can associate files that use this extension for use by SAS, but this change could affect other applications. You can change your current preference so these files will be associated with SAS, or you can leave the previous choice in place. Here are the choices you can make from this window:

- If you would like Setup to change the file extension association and enable SAS functionality, click Yes to make SAS 9.1.2 the default application for files using this extension.
- Click No to leave the previous association for the file extension in place.

In addition, you can check the box at the bottom of the window before you click Yes or No, if you would like all other file extensions already in use to be handled in the same manner.

Click Cancel to exit Setup without completing the procedure.

There are two alternatives for the final dialog in the sequence:



**Read *SAS Setup Complete*** if Setup displays this window.

At this point, Setup has installed the SAS software. If you want to launch the SAS System now, click that checkbox. If you want to view the Post-Installation Guide now, click that checkbox.

**Click Finish.**

**Read *SAS Setup Complete*** if Setup displays this window.

At this point, Setup has copied all the required files to your computer. However, some files could not be updated because they are in use. These will be updated automatically when you reboot your computer.

**Click** on one of the two radio buttons:

- Yes, I want to restart my computer now.
- No, I will restart my computer later.

If you choose to reboot, close all open applications and remove any floppy disks from the disk drives.

**Verify** that all virus-scanning software has been disabled after the computer restarts.

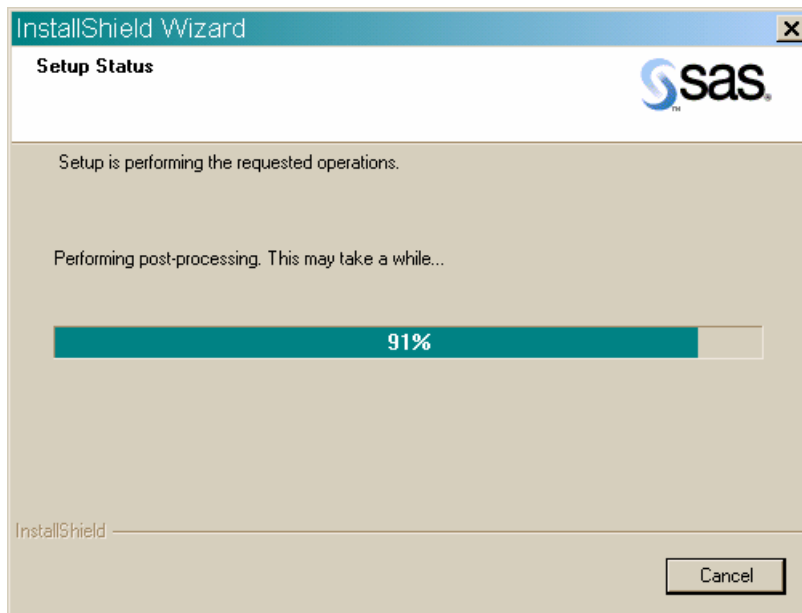
**Click Finish.**

## Dialogs Used More than Once in Setup

The following three dialogs appear as needed during SAS Setup Wizard procedures:

### **Read** *Setup Status*

This dialog is displayed while Setup performs the requested operations. No action is required. If you click Cancel, you will exit Setup, and the program will not be installed.



### **Read** *Exit Setup*

Setup can be completed later, but if you quit Setup now, the program will not be installed. Click No to resume Setup, or click Yes to quit.

### **Read** *Choose Folder*

This dialog is used to browse for an available folder. Navigate through the nested folders until you find the correct one for your installation.

**Click** OK to select the folder.

Or, click Cancel to return to the previous window.

## Installing the SAS System Viewer

The SAS System Viewer is available to users during a CD installation from the **Client-Side Components Volume 1** CD, and after an Administrator lays down the image on the server.

There are several ways to install SAS System Viewer 9.1.2:

- Insert the **Client-Side Components Volume 1** CD. Go to the `systemviewer` directory and run `SASView91.exe`.
- For an Administrator/Personal installation, point to the directory `\SAS Client-Side Components Volume 1\client1cd\systemviewer` and run `SASView91.exe`.
- From the SAS Software Navigator menu under the “Client-Side Components Volume 1” section, click `CD Index`, then click `SAS Client-Side Components Volume 1`, then Click `SAS System Viewer`. On the right side of the page, towards the bottom, click `install` (and/or `install instructions`.)

## Starting the SAS System Viewer

There are two ways to open the SAS System Viewer after it is installed:

1. Click on `Start > Programs > SAS > SAS System Viewer 9.1`
2. From Windows Explorer, navigate to the directory `C:\Program Files\SAS\SAS System Viewer\9.1` and run `sv.exe`

## Removing SAS Software

For an end user, the process of removing or uninstalling SAS software works just as it does for any other Windows software. Click on My Computer, then Control Panel, and then Add/Remove Programs. (You can also use the path Start --> Settings --> Control Panel to reach Add/Remove Programs.)

Select "SAS 9.1.2" from the list to remove SAS from your computer.

If an older version of SAS 9.1 was already installed on your computer, you will need to remove it before you install SAS 9.1.2.

## User Installation Glossary

This glossary defines terms that are used in the installation documentation and terms that you may encounter during installation of SAS 9.1.2. The terms are listed in alphabetic order.

Client Installation	A Client installation uses the SAS Installation Wizard, SAS Setup, to install the software you need to run SAS in association with shared files on a network server. SAS System components are not installed on a local disk; only a few essential files are installed locally.
Personal Installation	A Personal Installation uses the SAS Installation Wizard, SAS Setup, to install all the software you need to run SAS on your PC. In general, users who complete a Personal Installation of the SAS System are planning to run SAS without a server installation of SAS software in the network.
SAS 9.1.2 Foundation	SAS 9.1.2 Foundation is the combination of Base SAS 9.1.2 and the server side products that you have ordered which are installed at the same time as Base SAS 9.1.2.
SAS Installation Data	SAS Installation Data is required to install SAS Software. It includes your company's SETINIT and installation process customization parameters.
SAS Installation Representative	The SAS Installation Representative is a person appointed at your site who serves as the liaison between the site and SAS Institute. This person is the contact for all SAS software matters.
SAS Setup	SAS Setup (or "Setup") is a program that guides you in the installation of your SAS 9.2.1 and the configuration of your SAS operating environment.
SAS Software Depot	A SAS Software Depot is a network copy of all the CDs that you may want to install in your enterprise. It is desirable in a multi-machine deployment because you load the software on to a network drive and access it from all the machines in your deployment.
SETINIT	The SETINIT is a file of information about the software in your license. The SAS System is authorized on an annual basis. In order to run each software product, you must obtain a product authorization code from SAS Institute. When you install the SAS System, the SETINIT information is used to initialize the software for the current authorization period.







*The Power to Know<sup>®</sup>*

**support.sas.com**

SAS is the world leader in providing software and services that enable customers to transform data from all areas of their business into intelligence. SAS solutions help organizations make better, more informed decisions and maximize customer, supplier, and organizational relationships. For more than 25 years, SAS has been giving customers around the world The Power to Know<sup>®</sup>. Visit us at [www.sas.com](http://www.sas.com).

