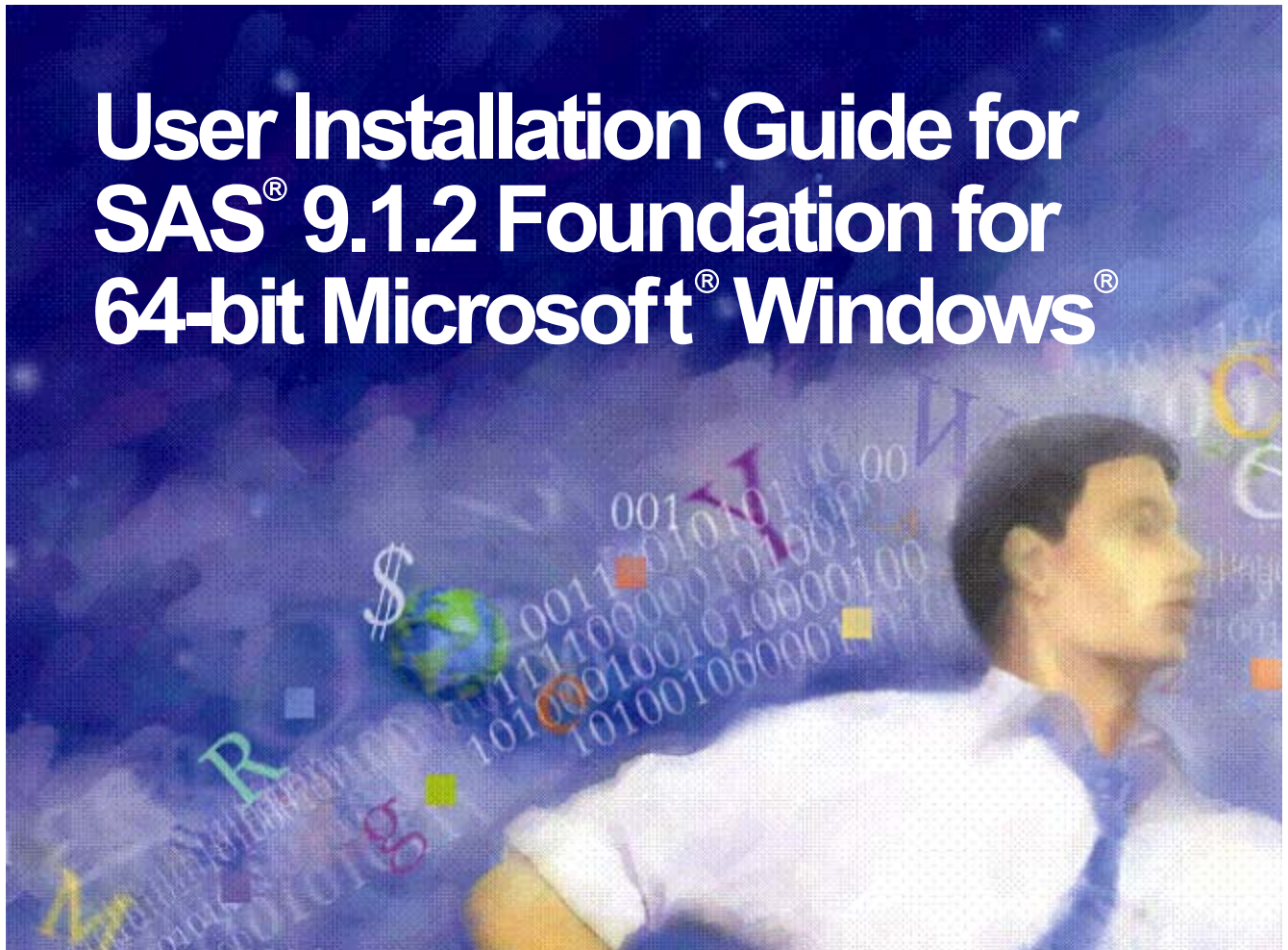




User Installation Guide for SAS[®] 9.1.2 Foundation for 64-bit Microsoft[®] Windows[®]



Installation Instructions

- Where to Begin
- The SAS Software Navigator
- Installing SAS from SAS Setup Disk
- Repair or Remove SAS Software

About This Guide

Most people who install SAS 9.1.2 Foundation can be considered either administrators or end users. This *User Installation Guide* is intended for end users. The instructions on the following pages will help you install SAS 9.1.2 Foundation.

If you need to perform a setup or other system administration tasks, please refer to the *Administrator Guide for SAS 9.1.2 Foundation for 64-bit Microsoft Windows*.

To find configuration information and instructions for customizing the installation of specific SAS components and products, please refer to *Post-Installation Guide for SAS 9.1.2 Foundation for 64-bit Microsoft Windows*.

Copyright Notice

The correct bibliographic citation for this manual is as follows: SAS Institute Inc., *User Installation Guide for SAS® 9.1.2 Foundation for 64-bit Microsoft® Windows®*, Cary, NC: SAS Institute Inc., 2003.

User Installation Guide for SAS® 9.1.2 Foundation for 64-bit Microsoft® Windows®, Copyright © 2003 SAS Institute Inc., Cary, NC, USA.

All rights reserved. Printed in the United States of America. No part of this publication may be reproduced, stored in a retrieval system, or transmitted, by any form or by any means, electronic, mechanical, photocopying, or otherwise, without the prior written permission of the publisher, SAS Institute, Inc. These installation instructions are copyrighted.

Limited permission is granted to store the copyrighted material in your system and display it on terminals, print only the number of copies required for use by those persons responsible for installing and supporting the SAS programming and licensed programs for which this material has been provided, and to modify the material to meet specific installation requirements. The SAS Institute copyright notice must appear on all printed versions of this material or extracts thereof and on the display medium when the material is displayed. Permission is not granted to reproduce or distribute the material except as stated above.

U.S. Government Restricted Rights Notice. Use, duplication, or disclosure of the software by the government is subject to restrictions as set forth in FAR 52.227-19 Commercial Computer Software-Restricted Rights (June 1987).

SAS Institute Inc., SAS Campus Drive, Cary, North Carolina 27513.

SAS® and all other SAS Institute Inc. product or service names are registered trademarks or trademarks of SAS Institute Inc. in the USA and other countries.

® indicates USA registration.

Certain products on this media include software developed by the Apache Software Foundation (<http://www.apache.org/>).

Certain products on this media include software developed by WebGain, Inc.

ACE™ is copyrighted by Douglas C. Schmidt and his research group at Washington University and University of California, Irvine.

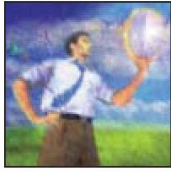
Other brand and product names are trademarks of their respective companies.

User Installation Guide for SAS 9.1.2 Foundation for 64-bit Microsoft Windows

Table of Contents

About This Guide	2
Copyright Notice.....	2
WHERE TO BEGIN	4
Personal Installation	4
Close all Programs Prior to Installation	4
Using the SAS Log.....	4
The SAS Software Navigator	4
Documentation for Installing SAS 9.1.2	5
Accessing the Documentation.....	5
Installing SAS from the SAS Setup Disk	6
Run the SAS Setup Wizard.....	6
Launch from the Media.....	7
THE SAS SETUP WIZARD FOR END USERS	8
Starting the SAS Setup Wizard	8
SAS Setup Wizard Dialogs	8
Sequence of Setup Windows.....	8
SAS Setup Wizard Dialogs & Directions.....	9
Dialogs Used More than Once in Setup.....	11
INSTALLING THE SAS SYSTEM VIEWER	12
Starting the SAS System Viewer	12
REPAIR OR REMOVE SAS SOFTWARE	13
USER INSTALLATION GLOSSARY	14

14 April 2004



Where to Begin

Personal Installation

A Personal Installation uses the SAS Installation Wizard, SAS Setup, to install all the software you need to run on your PC. In general, users who complete a Personal Installation of the SAS System are planning to run SAS without a server installation of SAS software in the network.

If you are installing from CDs, you are performing a Personal Installation. A Personal Installation can also be performed by using the SAS Setup Wizard from a network location created by your System Administrator.

Close all Programs Prior to Installation

SAS Technical Support strongly recommends that you shut down all programs, including virus-scanning programs, before proceeding with this installation. If you keep a virus-scanning program running, you increase the possibility that one or more reinstallations of SAS software will be necessary.

Using the SAS Log

If you view the SAS log (as a part of the installation log or separate from the installation), please note that SAS 9.1.2 and SAS 9.1.2 Foundation are displayed in the log as SAS 9.1 TS1M2.

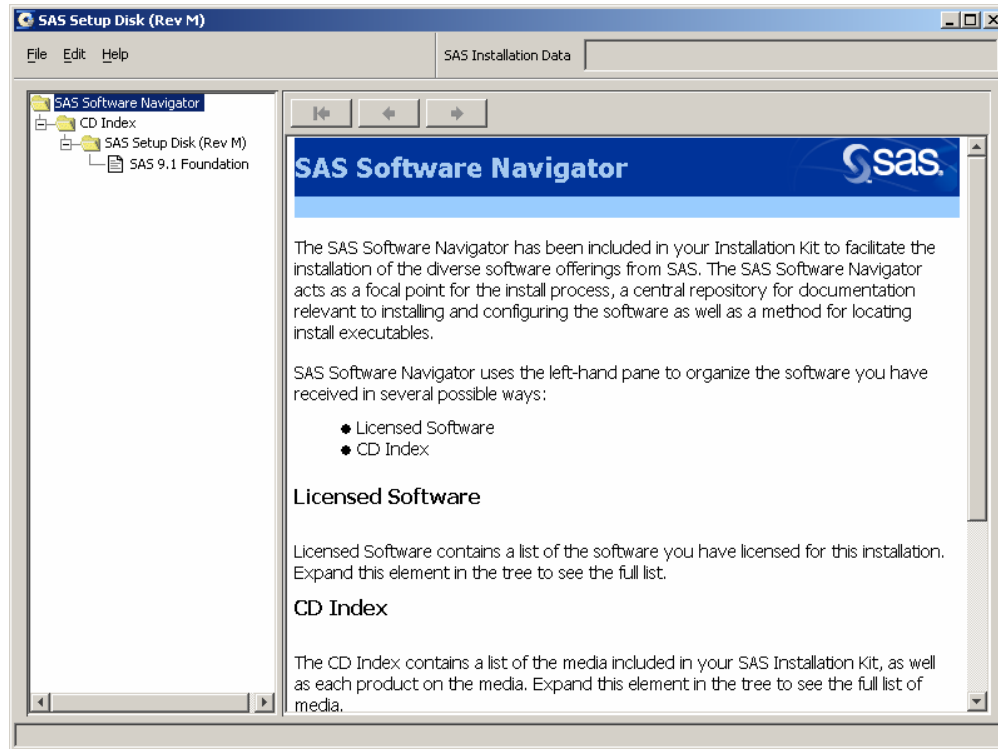
The SAS Software Navigator

The SAS Software Navigator serves as a launch pad for interactive use of SAS Setup. In addition, the SAS Software Navigator provides access to online installation and configuration documentation, the Install Center, and SAS Technical Support.

Note: To install SAS 9.1.2 in its simplest form by bypassing the SAS Software Navigator, you can run the installation from the **SAS Setup Disk**, as described in [Installing SAS from the SAS Setup Disk](#) on page 6.

When SAS Setup is run from a SAS Software Depot, the SAS Software Navigator is the first window to appear.

The SAS Software Navigator was written in Java, to take advantage of the platform independence offered by that programming language.



Documentation for Installing SAS 9.1.2

In SAS 9.1.2 Foundation, installation documentation is provided in online and hard copy formats.

Accessing the Documentation

Online, the documents can be found in the SAS Software Navigator and on the **SAS Setup Disk** in printable Adobe PDF format. The documents are available in hard copy form in the Installation Kit. The materials are divided into three documents:

- The *User Installation Guide* is accessible from the SAS Software Navigator by selecting the View User Installation Guide option.
- The *System Requirements* document can be accessed from the SAS Software Navigator by selecting the View System Requirements option.
- The *Post-Installation Guide* is intended for anyone who needs to tune the behavior of specific SAS products or solutions after installation. This document is accessible from the SAS Software Navigator by selecting the View Post-Installation Guide option.

For updated versions of these materials and the printed documentation included in your Installation Kit, you can review the contents of the SAS Install Center. This is the SAS 9.1.2 documentation repository. It is available by choosing the Visit the SAS Customer Support Center option, or directly from your browser:

<http://support.sas.com/documentation/installcenter/>

Install Center offers links to other sources of installation-related information as well.

Installing SAS from the SAS Setup Disk

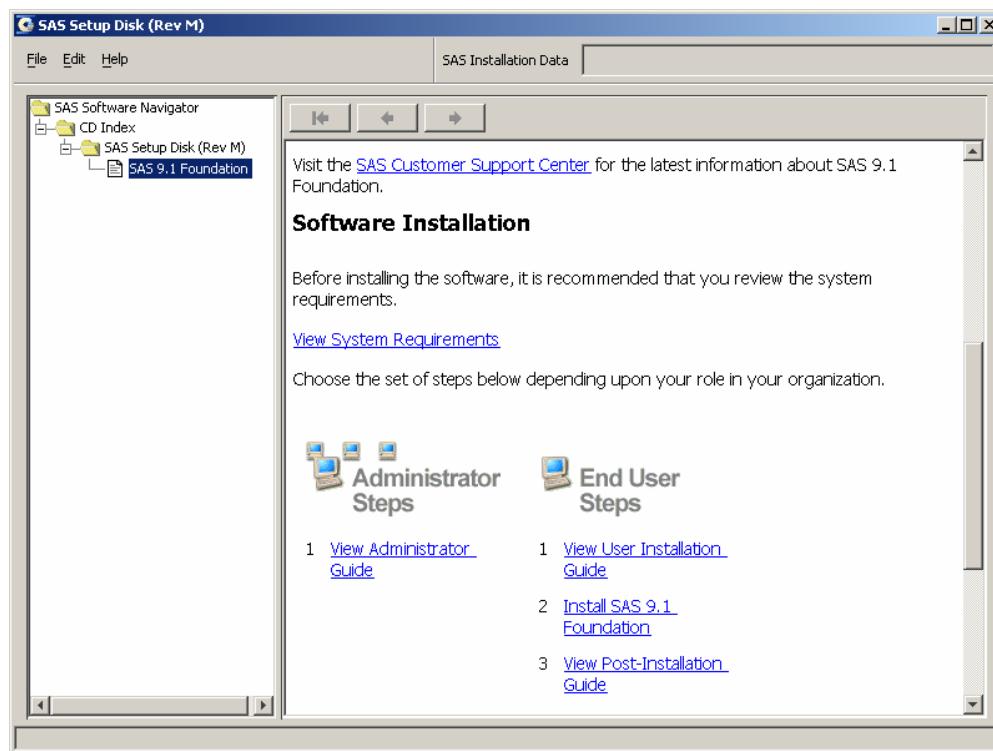
While the SAS Software Navigator was designed as the starting point for an enterprise deployment of SAS 9.1.2 Foundation, the **SAS Setup Disk** can be used for an installation of SAS 9.1.2 Foundation in its simplest form.

If you want to install SAS 9.1.2 Foundation using the **SAS Setup Disk**, follow these steps:

1. Make sure that you are logged in as the Administrator.
2. Locate the **SAS Setup Disk** in Media Storage, Division 8 of the Installation Kit. It is in Section 802, Server Media.
3. If the SAS Software Navigator is running from the **SAS Software Navigator Disk** (distributed in Section 801, Installation and Configuration Media of the Installation Kit), close this application by clicking the 'X' in the upper right-hand corner. In order for the **SAS Setup Disk** to autoplay, the SAS Software Navigator must be closed.
4. Insert the **SAS Setup Disk** in your CD-ROM drive.

The SAS Software Navigator will launch from the **SAS Setup Disk**. This instance of the SAS Software Navigator is limited to just the SAS Foundation software.

Note: If the SAS Software Navigator does not launch, then use `setup.exe` from the root of the CD as described in [Launch from the Media](#) on page 7.



The right pane of the limited SAS Software Navigator displays links that you need to continue your installation. Under the heading End User Steps, there are three links, including Install SAS 9.1 Foundation.

Run the SAS Setup Wizard

Follow these steps to perform your installation of SAS 9.1.2 Foundation.

1. Return to the SAS Software Navigator.
2. Under End User Steps, click on Install SAS 9.1 Foundation.
3. SAS Setup begins with a Welcome screen. Click Next on this screen.
4. Retrieve your SAS Installation Data file from the Internet or from a File.

Follow the steps in the window dialogs presented by SAS Setup to complete your installation of SAS 9.1.2 Foundation.

For descriptions of the remaining steps in SAS Setup, please see the chapter [“The SAS Setup Wizard for End Users”](#) on page 8.

Launch from the Media

If you want to bypass the SAS Software Navigator entirely, you can launch the installation tools directly from the media. This requires that you either exit the SSN or turn off the autoplay feature of your operating system.

To launch an installation of SAS 9.1.2 Foundation from the media, follow the steps below:

1. Use the same **SAS Setup Disk** and click on Start >Run.
2. Browse to your CD-ROM drive.
3. Go to the `/sas` folder and double-click on `setup.exe`.

Note: You must click on `setup` in the `/sas` folder or the SAS Software Navigator installation will be launched.

The rest of a SAS Setup process run from the media is the same as an installation launched from the limited SAS Software Navigator. For more information, please see the chapter [“The SAS Setup Wizard for End Users”](#) on page 8.

The SAS Setup Wizard for End Users

This section describes the steps required to install and run SAS. Users respond to the dialogs as each window is presented.

Most of the dialogs described below offer directions printed in bold text. The lines that begin with bolded words represent the quickest setup method. Dialogs that are shown indented below may not be a part of your installation.

All Setup dialogs are listed below according to the order in which SAS Setup presents them, with the exception of the dialogs that can appear more than once. These are grouped on page 11.

Starting the SAS Setup Wizard

To start SAS Setup, complete the following three steps:

1. Insert the CD-ROM labeled **SAS Setup Disk** into the source drive. The SAS Software Navigator should appear. If this does not happen, or if you are running from a network location provided by your administrator, select the Run menu option from the Windows Start menu and type:

```
<source_drive>:\SETUP
```

In this context, *<source_drive>* is the drive containing the SAS System installation media.

2. Select SAS 9.1 Foundation from the list of options, and then select Install SAS 9.1 Foundation.

SAS Setup Wizard Dialogs

Sequence of Setup Windows

Welcome to the SAS Setup Wizard
Choose Setup Language
Retrieve SAS Installation Data
SAS Installation Data
SAS Installation Data Not Found
Language Selections
Default Language
Add/Remove SAS Software
SAS Shared Files
Choose Destination Folder
Specify Data Files Folder
Specify Temporary Files Folder
Select Components
Start Copying Files
Confirm Update
SAS Setup Complete

SAS Setup Wizard Dialogs & Directions

Read *Welcome to the SAS Setup Wizard*

Click Next.

Or, click Cancel to exit the SAS Setup Wizard.

Read *Retrieve SAS Installation Data*

Select Existing, unless you plan to specify a different file, or expect to provide the SAS Installation Data later.

Most users can use the network location provided by an administrator. However, if your SAS Installation Data is in a different location, select File to enter that location on the *SAS Installation Data File* dialog. More information on that window can be found below.

Click Next.

Or, click Back to view the previous screen, or click Cancel to exit Setup.

Read *SAS Installation Data*, if Setup displays this window.

Type the full path for your SAS Installation Data file, or click Browse to locate the directory.

If the SAS Installation Data file cannot be found, you will receive an error message.

Click Next

Or, click Back to view the *Retrieve SAS Installation Data* screen, or click Cancel to exit Setup.

Read *SAS Installation Data Not Found*, if Setup displays this window.

Click Okay

Read *Language Selections*, if Setup displays this window.

Click Select All to choose all the languages that are available to you, or select Clear All to deselect the chosen listings.

Click Next.

Or, click Back to view the previous window, or click Cancel to exit Setup.

Read *Default Language*, if Setup displays this window.

This window displays all the languages chosen on the *Language Selections* window.

Click the box next to the language that you want to select for your default language.

Click Next.

Or, click Back to view the *Language Selections* window, or click Cancel to exit Setup.

Read *SAS Shared Files* if Setup displays this window.

Some files that are installed by Setup are shared between multiple SAS products and/or multiple SAS releases. Most users can use the location listed on the screen.

If you want your shared files in another folder, click Browse.

If you have not installed SAS before, or if you have uninstalled SAS and cleaned your Windows registry, you will be prompted for the location of these files.

Click Next.

Or, click Back to view the previous screen, or click Cancel to exit Setup.

Read *Choose Destination Folder*

Click Next to install SAS in the destination folder listed on the screen.

Or, click Browse to choose a different folder. Click Back to view the previous screen, or click Cancel to exit Setup.

Read *Specify Data Files Folder*

By default, the Windows user profile directory is created in the location shown in this window. If you select this default choice for the Windows directory, multiple users can use SAS on the same computer.

Personal data folders are created automatically.

Click Next to accept the default directory, or click Browse to specify a different directory.

Click Back to view the *Choose Destination Location* screen, or click Cancel to exit Setup.

Read *Specify Temporary Files Folder*

As SAS processes your data, temporary files are created.

Click Next to select the folder listed on the screen as the location for these temporary files.

Or, click Browse to specify a different folder. Click Back to view the *Specify Data Files Folder* screen, or click Cancel to exit Setup.

Read *Select Components*

This window displays the components that have been selected for your installation. To make changes to this list, select the components that you want to install, and deselect the components that you do not want to install.

Click Select Licensed Software as a quick way to select only the components that are listed in your software license.

Click Next.

Or, click Back to view the *Specify Temporary Files Folder* screen, or click Cancel to exit Setup.

Read *Start Copying Files*

At this point in the installation, Setup has enough information to start copying the program files.

Click Next if you are satisfied with the settings.

Or, if you want to review or change any settings, click Back to return to the *Select Components* screen.

Click Cancel to exit Setup.

There are two alternatives for the final dialog in the sequence:

Read *SAS Setup Complete* if Setup displays this window.

At this point, Setup has installed the SAS software. If you want to launch the SAS System now, click that checkbox. If you want to view the Post-Installation Guide now, click that checkbox.

Click Finish.

Read *SAS Setup Complete* if Setup displays this window.

At this point, Setup has copied all the required files to your computer. However, some files could not be updated because they are in use. These will be updated automatically when you reboot your computer.

Click on one of the two radio buttons:

- Yes, I want to restart my computer now.
- No, I will restart my computer later.

If you choose to reboot, close all open applications and remove any floppy disks from the disk drives.

Verify that all virus-scanning software has been disabled after the computer restarts.

Click Finish.

Dialogs Used More than Once in Setup

The following three dialogs appear as needed during SAS Setup Wizard procedures:

Read *Setup Status*

This dialog is displayed while Setup performs the requested operations. No action is required. If you click Cancel, you will exit Setup, and the program will not be installed.

Read *Exit Setup*

Setup can be completed later, but if you quit Setup now, the program will not be installed. Click No to resume Setup, or click Yes to quit.

Read *Choose Folder*

This dialog is used to browse for an available folder. Navigate through the nested folders until you find the correct one for your installation.

Click OK to select the folder.

Or, click Cancel to return to the previous screen.

Installing the SAS System Viewer

There are two ways to install SAS System Viewer 9.1. As described below, the SAS System Viewer is available to users during a CD installation from the **Client-Side Components Volume 1** CD, and after an Administrator lays down the image on the server.

1. To install the SAS System Viewer from the **Client-Side Components Volume 1** CD, you need to begin with Windows Explorer. To start, place the CD in the CD-ROM drive and go to the directory `<cd-rom drive> client1cd\systemviewer`. From this location, run `SASView91.exe`.

Be aware that when the **Client-Side Components Volume 1** CD is inserted in a Windows 64-bit machine, the following error message will probably appear:

```
System Requirements
Setup does not support this operating system. Please review
the System Requirements documentation for a list of supporting
operating systems.
```

Click **OK** and follow the directions above.

2. For an Administrator/Personal installation, point to the directory `\SAS Client-Side Components Volume 1\client1cd\systemviewer` and run `SASView91.exe`.

Starting the SAS System Viewer

There are two ways to open the SAS System Viewer after it is installed:

1. Click on `Start> All Programs> SAS> SAS System Viewer 9.1`
2. From Windows Explorer, navigate to the directory `C:\Program Files (x86)\SAS\SAS System Viewer\9.1` and run `sv.exe`.

Repair or Remove SAS Software

For an end user, the process of removing or updating SAS software works just as it does for any other Windows software. Click on `My Computer`, then `Control Panel`, and then `Add/Remove Programs`.

Select `SAS 9.1.2` from the list to perform the following tasks:

- Remove SAS from your computer
- Repair your SAS installation
- Add products to your SAS System installation
- Remove products from your SAS System installation

User Installation Glossary

This glossary defines terms that are used in the installation documentation and terms that you may encounter during installation of SAS 9.1.2 Foundation. The terms are listed in alphabetic order.

Client Installation	A Client Installation uses the SAS Installation Wizard, SAS Setup, to install the software you need to run SAS in association with shared files on a network server. SAS System components are not installed on a local disk; only a few essential files are installed locally.
Personal Installation	A Personal Installation uses the SAS Installation Wizard, SAS Setup, to install all the software you need to run SAS on your PC. In general, users who complete a Personal Installation of the SAS System are planning to run SAS without a server installation of SAS software in the network.
SAS 9.1.2 Foundation	SAS 9.1.2 Foundation is the combination of Base SAS and the server-side products that you have ordered which are installed at the same time as Base SAS 9.1.2.
SAS Installation Data	SAS Installation Data is required to install SAS Software. It includes your company's SETINIT and installation process customization parameters.
SAS Installation Representative	The SAS Installation Representative is a person appointed at your site who serves as the liaison between the site and SAS Institute. This person is the contact for all SAS software matters.
SAS Setup	SAS Setup (or "Setup") is a program that guides you in the installation of your SAS software and the configuration of your SAS operating environment.
SETINIT	The SETINIT is a file of information about the software in your license. The SAS System is authorized on an annual basis. In order to run each software product, you must obtain a product authorization code from SAS Institute. This authorization information resides in the SETINIT.SSS file. When you install the SAS System, the SETINIT information is used to initialize the software for the current authorization period.



The Power to Know[®]

support.sas.com

SAS is the world leader in providing software and services that enable customers to transform data from all areas of their business into intelligence. SAS solutions help organizations make better, more informed decisions and maximize customer, supplier, and organizational relationships. For more than 25 years, SAS has been giving customers around the world The Power to Know[®]. Visit us at www.sas.com.