

Installation Instructions for Risk Dimensions™ Enterprise Edition Release 2.20

To install Risk Dimensions Enterprise Edition, perform the following six steps.

1. **Uninstall any previous version of Risk Dimensions.**

If you have a previous version of Risk Dimensions, uninstall it from the Control Panel:

Start→Settings→ControlPanel→Add/Remove Programs

If you have chosen to put your own data files in the **RiskDimensions** folder or sub folders under it, copy those data files to a different location. You can restore them to the same locations after the uninstall and new install is complete. Find the **Risk Dimensions** entry and click the **Add/Remove** button. After the removal process is complete, delete the old **RiskDimensions** folder by dragging it to the recycle bin.

2. **Verify that you have sufficient disk space available.**

Refer to the **System Requirements for Risk Dimensions Enterprise Edition, Release 2.10** document to determine the total amount of disk space required by the Risk Dimensions installation.

3. **Insert the CD-ROM into the drive.**

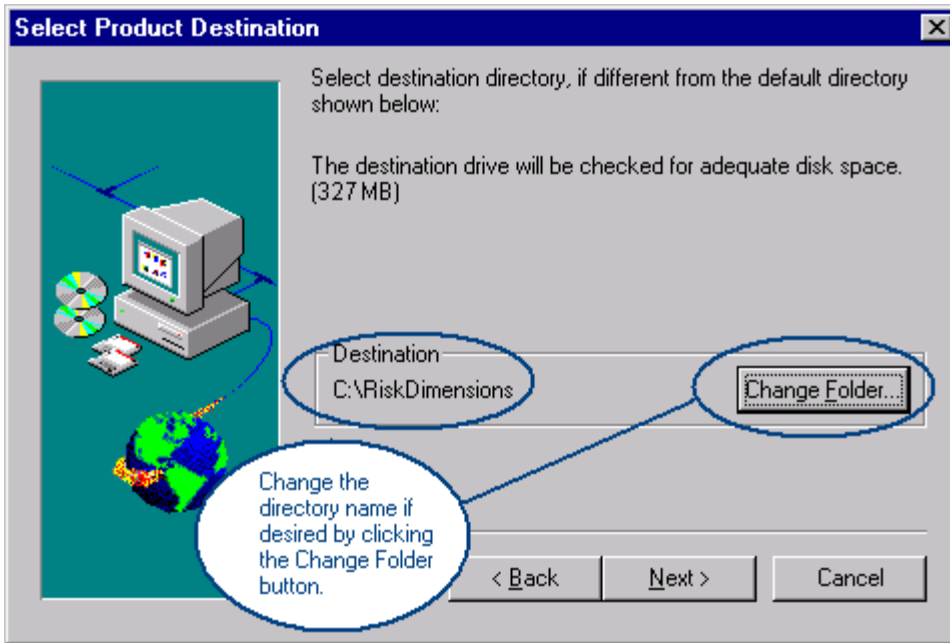
If AutoPlay is enabled on your system, the Setup application will start in a few seconds. If so, skip the following step.

4. **Start the Setup application.**

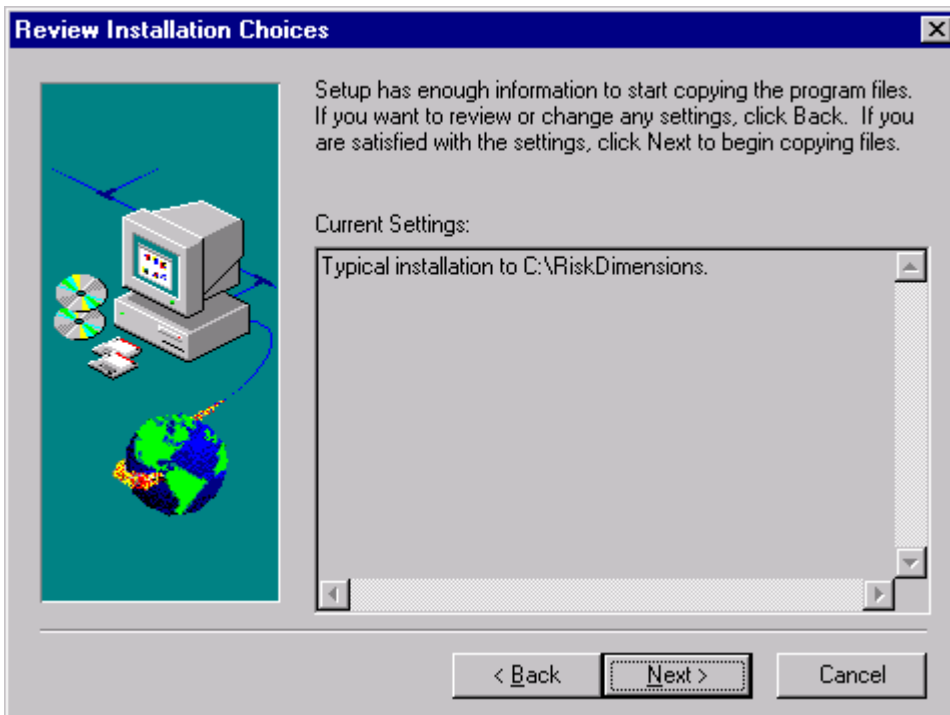
Double-click the **My Computer** icon on the desktop, then double-click the CD-ROM drive icon, then double-click **setup.exe**. The installation wizard will begin executing.

5. **Select the installation options.**

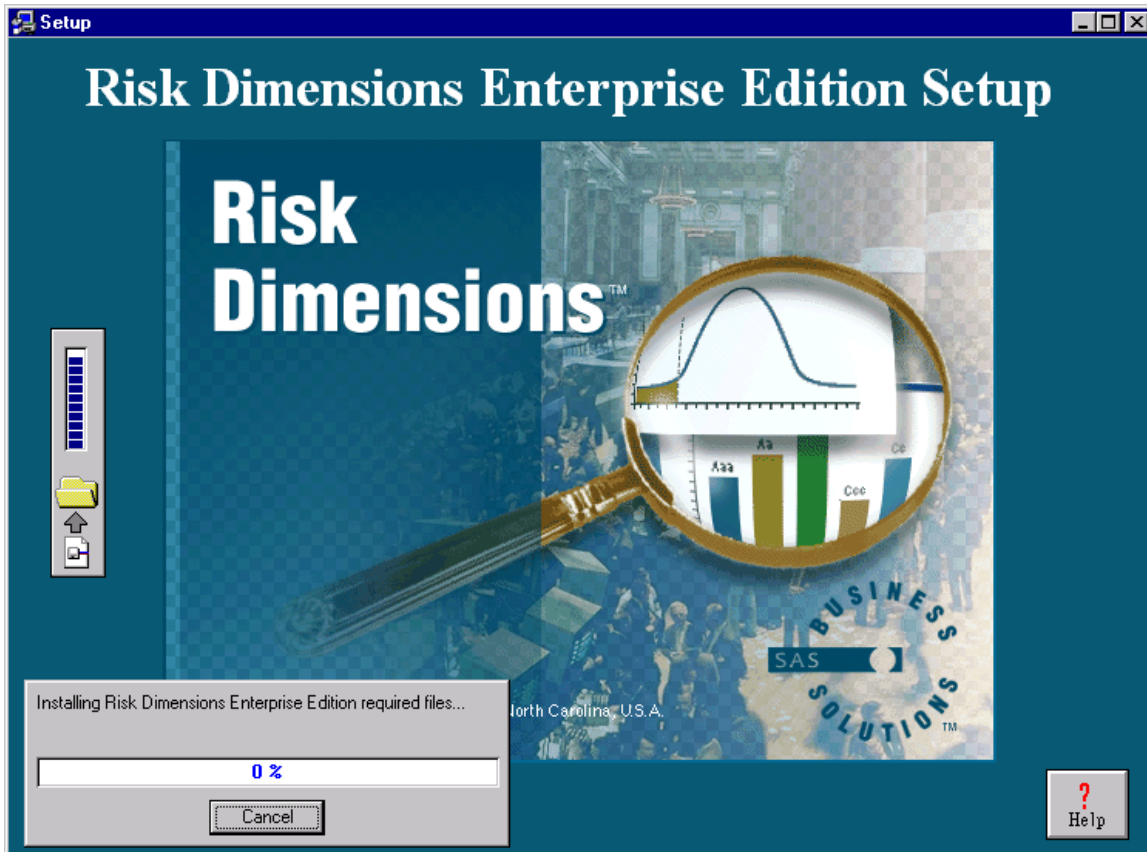
Select the name of the destination directory in the **Select Product Destination** dialog. The default is **C:\RiskDimensions**, but you can change this by clicking on the **Change Folder...** button, as shown below:



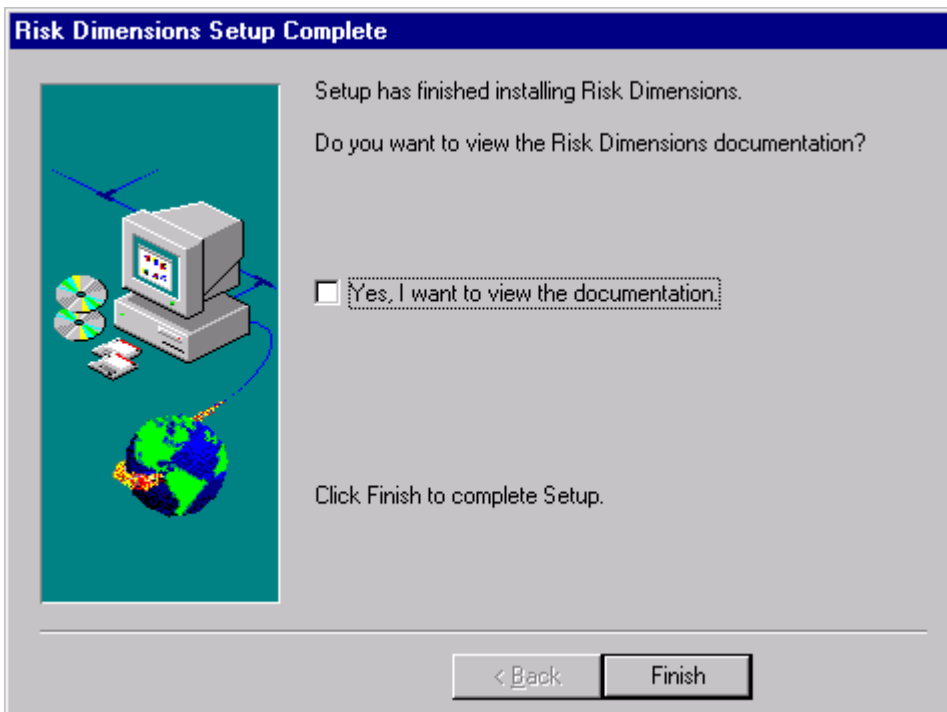
Click the **Next** button to continue. You will see the following **Review Installation Choices** window next.



After you click the **Next** button, you will see the following window:





When the Setup program finishes installing all files, you will see the following window:



If you would like to view the Risk Dimensions documentation, click the **Yes, I want to view the documentation** checkbox, and then click the **Finish** button. Your Web browser will be started and will display the top-level documentation page.

Otherwise, just click the **Finish** button.

After the installation is complete, you will see two new icons on your desktop:

Icon	Label	Description
	Risk Dimensions	Double-click this icon to bring up the Risk Dimensions application.
	Risk Dimensions Reference	Double-click this icon to view the Risk Dimensions documentation.

6. **Apply the Risk Dimensions SETINIT.**

Before you can begin using Risk Dimensions, you need to apply the software SETINIT. See the SETINIT instructions enclosed in this package.

SAS® and all other SAS Institute product or service names are registered trademarks or trademarks of SAS Institute Inc. in the USA and other countries. ® indicates USA registration.

IBM®, AIX/6000®, DB2®, OS/2®, and OS/390® are registered trademarks or trademarks of International Business Machines Corporation. ORACLE® and Oracle Rdb™ are registered trademarks or trademarks of Oracle Corporation. ® indicates USA registration.

Other brand and product names are registered trademarks or trademarks of their respective companies.

Copyright (c) 1999 SAS Institute Inc. Cary, NC, USA. All rights reserved.

November 17, 1999